

**T2N, R97W,  
6th P.M.**

**WELL LOCATION:  
MOHEE FED 0297-17-29-16NH**  
ELEV. UNGRADED GROUND = 5993.3'

SHL  
NAD 83  
Lat. = 40.143422°N  
Long. = 108.297264°W

NAD 27  
40.143451°N  
108.296619°W

UTM Z-12-N  
N 4447178.17m  
E 730235.94m

Operator: Adrue Floyed / PDOP = 1.7

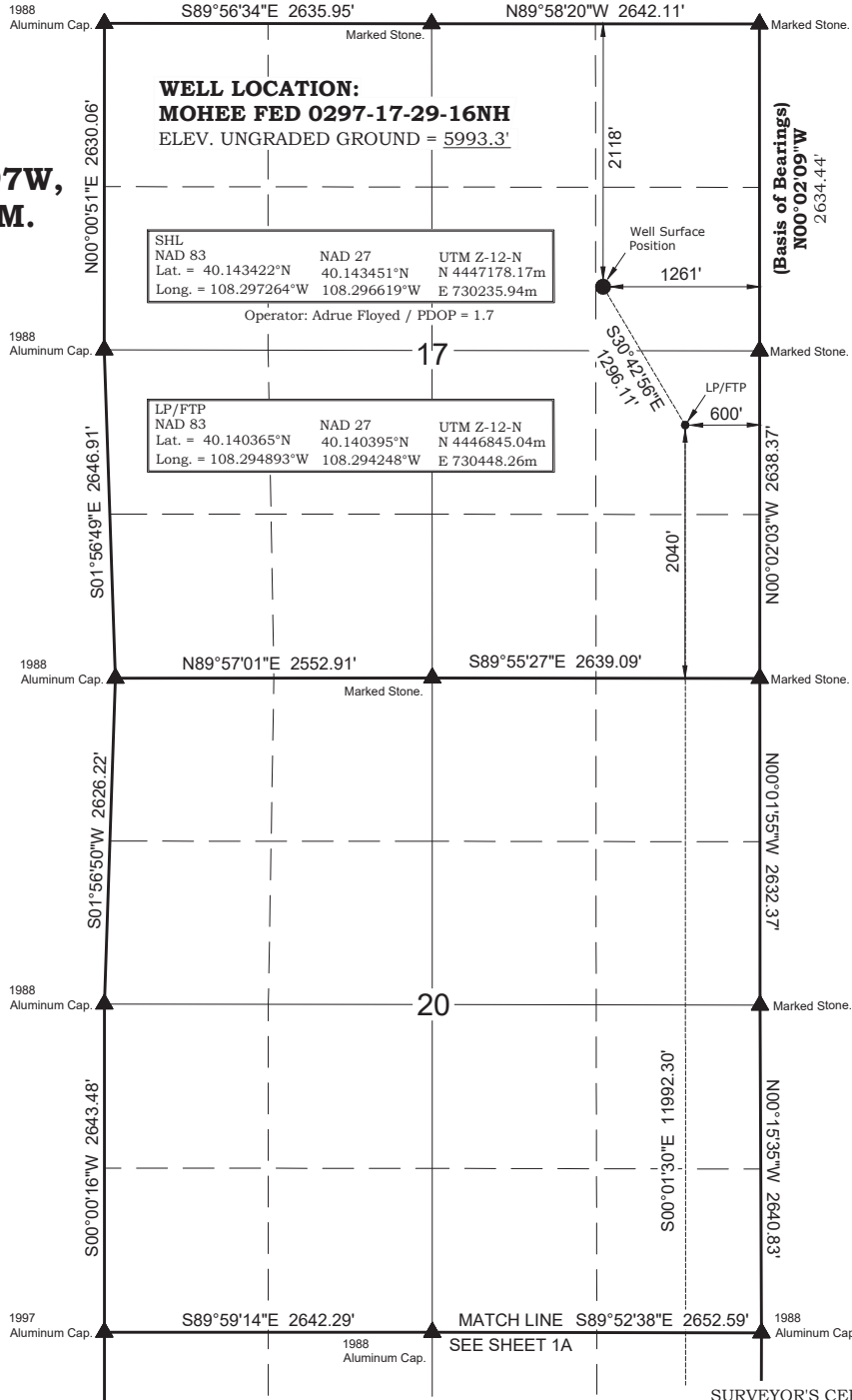
LP/FTP  
NAD 83  
Lat. = 40.140365°N  
Long. = 108.294893°W

NAD 27  
40.140395°N  
108.294248°W

UTM Z-12-N  
N 4446845.04m  
E 730448.26m

17

20



**NOTES:**

▲ = Section Corners Located

△ = Section Corners Located Not Monumented

- Well footages are measured at right angles to the Section Lines.
- Bearings and distances shown on this plat are based upon a local Cartesian Grid which is oriented to Geodetic North at the SE Corner of Section 36, T2N, R97W, 6th P.M. The grid having a mean project height of 6,250'. Lineal units used are U.S. Survey Foot. Trimble G.P.S. equipment was used in performance of this survey.
- Latitude and Longitude are NAD 83 (2011) Epoch 2010. Elevations are NAVD 88. Which are derived from an NGS OPUS Report.

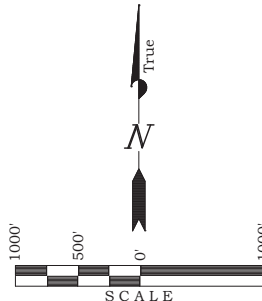
**ANSCHUTZ**

**EXPLORATION CORPORATION**

555 17th Street, Suite 2400 - Denver, Colorado 80202

**WELL PLAT**

**MOHEE FED 0297-17-29-16NH**  
**600' FSL & 600' FEL (Bottom Hole)**  
**SE ¼ SE ¼ OF SECTION 29, T2N, R97W,**  
**6th P.M., RIO BLANCO COUNTY, COLORADO**



**SURVEYOR'S CERTIFICATE**

I, BROCK J. SLAUGH, DO HEREBY CERTIFY THAT I AM A PROFESSIONAL LAND SURVEYOR AND THAT I HOLD CERTIFICATE #38443 AS PRESCRIBED BY THE LAWS OF THE STATE OF COLORADO. I FURTHER CERTIFY THAT THIS PLAT AND ITS COMPUTATIONS AND FIELD SURVEYS NECESSARY FOR THE DATA COMPILED HEREON WERE MADE BY ME OR UNDER MY SUPERVISION AND THE SAME ARE TRUE AND CORRECT TO THE BEST OF MY KNOWLEDGE AND BELIEF; THAT THE SURVEY WAS PERFORMED IN ACCORDANCE WITH APPLICABLE STANDARDS OF PRACTICE AND I AM NOT PROVIDING A GUARANTY OR WARRANTY, EITHER EXPRESSED OR IMPLIED, THIS CERTIFICATE DOES NOT REPRESENT A LAND SURVEY PLAT OR IMPROVEMENT SURVEY PLAT AS DEFINED BY C.R.S. § 38-5-107 AND CANNOT BE RELIED UPON TO DETERMINE OWNERSHIP.

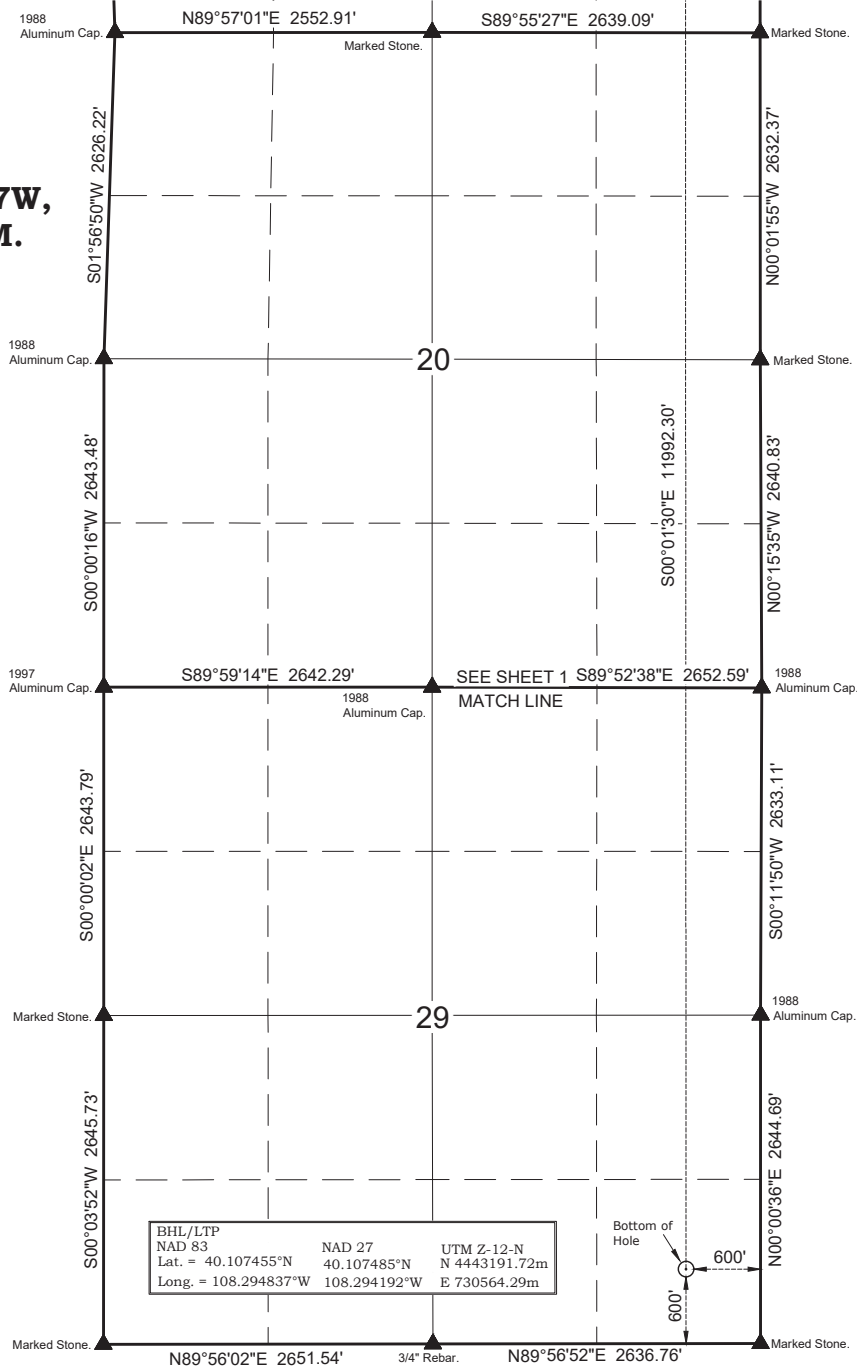
*Brock J. Slauch*  
38443  
PROFESSIONAL LAND SURVEYOR  
STATE OF COLORADO

**TIMBERLINE**

ENGINEERING & LAND SURVEYING, INC.  
209 NORTH 300 WEST - VERNAL, UTAH 84078

DATE SURVEYED: 7-11-23	SURVEYED BY: C.S.	SHEET <b>1</b>
DATE DRAWN: 8-29-23	DRAWN BY: S.A.	
SCALE: 1" = 1000'	Date Last Revised: 9-27-23 S.A.	OF 39

**T2N, R97W,  
6th P.M.**



**NOTES:**

▲ = Section Corners Located

△ = Section Corners Located Not Monumented

- Well footages are measured at right angles to the Section Lines.
- Bearings and distances shown on this plat are based upon a local Cartesian Grid which is oriented to Geodetic North at the SE Corner of Section 36, T2N, R97W, 6th P.M. The grid having a mean project height of 6,250'. Lineal units used are U.S. Survey Foot. Trimble G.P.S. equipment was used in performance of this survey.
- Latitude and Longitude are NAD 83 (2011) Epoch 2010. Elevations are NAVD 88. Which are derived from an NGS OPUS Report.

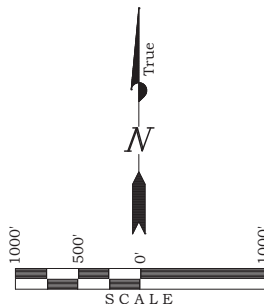
**ANSCHUTZ**

**EXPLORATION CORPORATION**

555 17th Street, Suite 2400 - Denver, Colorado 80202

**WELL PLAT**

**MOHEE FED 0297-17-29-16NH  
600' FSL & 600' FEL (Bottom Hole)  
SE ¼ SE ¼ OF SECTION 29, T2N, R97W,  
6th P.M., RIO BLANCO COUNTY, COLORADO**



**SURVEYOR'S CERTIFICATE**

I, BROCK J. SLAUGH, DO HEREBY CERTIFY THAT I AM A PROFESSIONAL LAND SURVEYOR AND THAT I HOLD CERTIFICATE #38443 AS PRESCRIBED BY THE LAWS OF THE STATE OF COLORADO. I FURTHER CERTIFY THAT THIS PLAT AND ITS COMPUTATIONS AND FIELD SURVEYS NECESSARY FOR THE DATA COMPILED HEREON WERE MADE BY ME OR UNDER MY SUPERVISION AND THE SAME ARE TRUE AND CORRECT TO THE BEST OF MY KNOWLEDGE AND BELIEF; THAT THE SURVEY WAS PERFORMED IN ACCORDANCE WITH APPLICABLE STANDARDS OF PRACTICE AND I AM NOT PROVIDING A GUARANTY OR WARRANTY, EITHER EXPRESSED OR IMPLIED, THIS CERTIFICATE DOES NOT REPRESENT A LAND SURVEY PLAT OR IMPROVEMENT SURVEY PLAT AS DEFINED BY C.R.S. § 38-5-107 AND CANNOT BE RELIED UPON TO DETERMINE OWNERSHIP.

*Brock J. Slauch*  
PROFESSIONAL LAND SURVEYOR  
38443

**TIMBERLINE**

ENGINEERING & LAND SURVEYING, INC.  
209 NORTH 300 WEST - VERNAL, UTAH 84078

DATE SURVEYED: 7-11-23	SURVEYED BY: C.S.	SHEET <b>1A</b>
DATE DRAWN: 8-29-23	DRAWN BY: S.A.	OF 39
SCALE: 1" = 1000'	Date Last Revised: 9-27-23 S.A.	

**T2N, R97W, 6th P.M.**

**NOTES:**

- ▲ = Section Corners Located
- △ = Section Corners Located Not Monumented
- 1. Well footages are measured at right angles to the Section Lines.
- 2. Bearings and distances shown on this plat are based upon a local Cartesian Grid which is oriented to Geodetic North at the SE Corner of Section 36, T2N, R97W, 6th P.M. The grid having a mean project height of 6,250'. Lineal units used are U.S. Survey Foot. Trimble G.P.S. equipment was used in performance of this survey.
- 3. Latitude and Longitude are NAD 83 (2011) Epoch 2010. Elevations are NAVD 88. Which are derived from an SGS OPUS Report.
- 4. LP/FTP Bears N84°24'46"E 653.24' from the Surface Position.

**WELL LOCATION:**  
**MOHEE FED 0297-17-8-1NH**  
ELEV. UNGRADED GROUND = 5992.5'

**WELL PLAT**

**MOHEE FED 0297-17-8-1NH**  
**600' FNL & 600' FEL (Bottom Hole)**  
**NE ¼ NE ¼ OF SECTION 8, T2N, R97W,**  
**6th P.M., RIO BLANCO COUNTY, COLORADO**

**ANSHUTZ**  
**EXPLORATION CORPORATION**  
555 17th Street, Suite 2400 - Denver, Colorado 80202

True  
N

SCALE  
1000'  
500'  
0  
1000'

SURVEYOR'S CERTIFICATE

I, BROCK J. SLAUGH, DO HEREBY CERTIFY THAT I AM A PROFESSIONAL LAND SURVEYOR AND THAT I HOLD CERTIFICATE #38443 AS PRESCRIBED BY THE LAWS OF THE STATE OF COLORADO. I FURTHER CERTIFY THAT THIS PLAT AND ITS COMPUTATIONS AND FIELD SURVEYS NECESSARY FOR THE DATA COMPILED HEREON WERE MADE BY ME OR UNDER MY SUPERVISION AND THE SAME ARE TRUE AND CORRECT TO THE BEST OF MY KNOWLEDGE AND BELIEF; THAT THE SURVEY WAS PERFORMED IN ACCORDANCE WITH APPLICABLE STANDARDS OF PRACTICE AND I MAKE NO GUARANTY OR WARRANTY, EITHER EXPRESSED OR IMPLIED, THIS CERTIFICATE DOES NOT REPRESENT A LAND SURVEY PLAT OR IMPROVEMENT SURVEY PLAT AS DEFINED BY C.R.S. § 5-5-102 AND CANNOT BE RELIED UPON TO DETERMINE OWNERSHIP.

Brock J. Slaugh  
PROFESSIONAL LAND SURVEYOR  
#38443

**TIMBERLINE**  
ENGINEERING & LAND SURVEYING, INC.  
209 NORTH 300 WEST - VERNAL, UTAH 84078

DATE SURVEYED:	SURVEYED BY: C.S.	SHEET
7-11-23		2
DATE DRAWN:	DRAWN BY: S.A.	
8-29-23		
SCALE: 1" = 1000'	Date Last Revised:	
	9-27-23	

OF 39

**T2N, R97W,  
6th P.M.**

**WELL LOCATION:  
MOHEE FED 0297-17-29-16 WNH**  
ELEV. UNGRADED GROUND = 5991.3'

SHL  
NAD 83  
Lat. = 40.143501°N  
Long. = 108.297363°W

NAD 27  
40.143530°N  
108.296718°W

UTM Z-12-N  
N 4447186.70m  
E 730227.23m

Operator: Adrue Floyed / PDOP = 1.7

FP/LTP  
NAD 83  
Lat. = 40.140366°N  
Long. = 108.295251°W

NAD 27  
40.140395°N  
108.294606°W

UTM Z-12-N  
N 4446844.12m  
E 730417.79m

17

20

**NOTES:**

▲ = Section Corners Located

△ = Section Corners Located Not Monumented

- Well footages are measured at right angles to the Section Lines.
- Bearings and distances shown on this plat are based upon a local Cartesian Grid which is oriented to Geodetic North at the SE Corner of Section 36, T2N, R97W, 6th P.M. The grid having a mean project height of 6,250'. Lineal units used are U.S. Survey Foot. Trimble G.P.S. equipment was used in performance of this survey.
- Latitude and Longitude are NAD 83 (2011) Epoch 2010. Elevations are NAVD 88. Which are derived from an NGS OPUS Report.

**ANSCHUTZ**

**EXPLORATION CORPORATION**

555 17th Street, Suite 2400 - Denver, Colorado 80202

**WELL PLAT**

**MOHEE FED 0297-17-29-16 WNH**  
**600' FSL & 700' FEL (Bottom Hole)**  
**SE ¼ SE ¼ OF SECTION 29, T2N, R97W,**  
**6th P.M., RIO BLANCO COUNTY, COLORADO**



**SURVEYOR'S CERTIFICATE**  
I, BROCK J. SLAUGH, DO HEREBY CERTIFY THAT I AM A PROFESSIONAL LAND SURVEYOR AND THAT I HOLD CERTIFICATE #38443 AS PRESCRIBED BY THE LAWS OF THE STATE OF COLORADO. I FURTHER CERTIFY THAT THIS PLAT AND ITS COMPUTATIONS AND FIELD SURVEYS NECESSARY FOR THE DATA COMPILED HEREON WERE MADE BY ME OR UNDER MY SUPERVISION AND THE SAME ARE TRUE AND CORRECT TO THE BEST OF MY KNOWLEDGE AND BELIEF; THAT THE SURVEY WAS PERFORMED IN ACCORDANCE WITH APPLICABLE STANDARDS OF PRACTICE AND I AM NOT PROVIDING A GUARANTY OR WARRANTY, EITHER EXPRESSED OR IMPLIED, THIS CERTIFICATE DOES NOT REPRESENT A LAND SURVEY PLAT OR IMPROVEMENT SURVEY PLAT AS DEFINED BY C.R.S. § 38-5-102 AND CANNOT BE RELIED UPON TO DETERMINE OWNERSHIP.

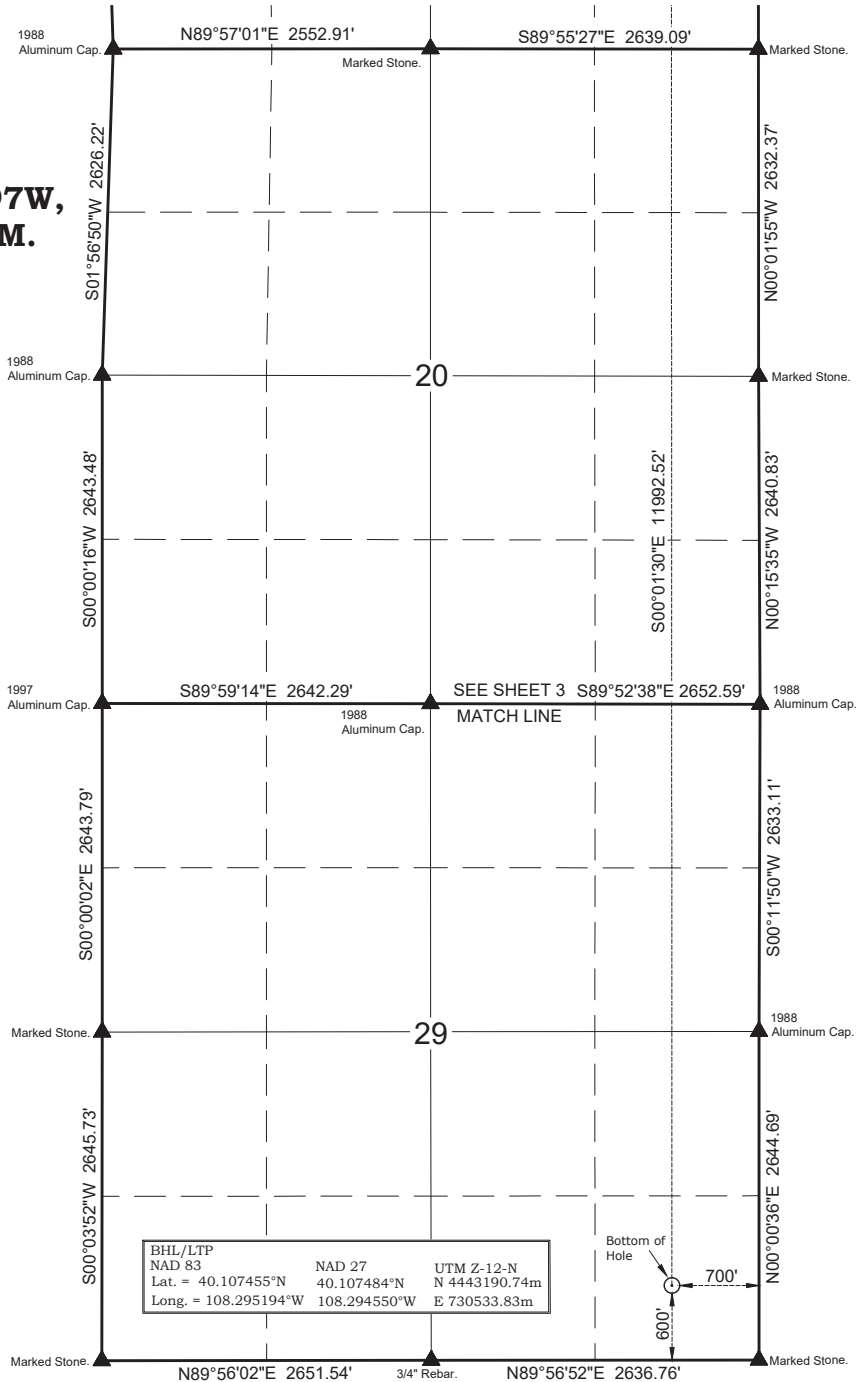
*Brock J. Slough*  
PROFESSIONAL LAND SURVEYOR  
38443

**TIMBERLINE**

ENGINEERING & LAND SURVEYING, INC.  
209 NORTH 300 WEST - VERNAL, UTAH 84078

DATE SURVEYED: 7-11-23	SURVEYED BY: C.S.	SHEET <b>3</b> OF 39
DATE DRAWN: 8-29-23	DRAWN BY: S.A.	
SCALE: 1" = 1000'	Date Last Revised: 9-27-23 S.A.	

T2N, R97W,  
6th P.M.



NOTES:

▲ = Section Corners Located

△ = Section Corners Located Not Monumented

- Well footages are measured at right angles to the Section Lines.
- Bearings and distances shown on this plat are based upon a local Cartesian Grid which is oriented to Geodetic North at the SE Corner of Section 36, T2N, R97W, 6th P.M. The grid having a mean project height of 6,250'. Lineal units used are U.S. Survey Foot. Trimble G.P.S. equipment was used in performance of this survey.
- Latitude and Longitude are NAD 83 (2011) Epoch 2010. Elevations are NAVD 88. Which are derived from an NGS OPUS Report.

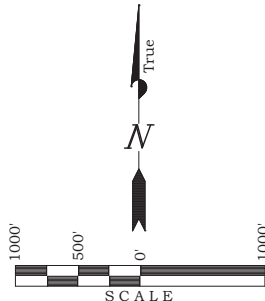
**ANSCHUTZ**

**EXPLORATION CORPORATION**

555 17th Street, Suite 2400 - Denver, Colorado 80202

**WELL PLAT**

**MOHEE FED 0297-17-29-16 WNH**  
**600' FSL & 700' FEL (Bottom Hole)**  
**SE ¼ SE ¼ OF SECTION 29, T2N, R97W,**  
**6th P.M., RIO BLANCO COUNTY, COLORADO**



**SURVEYOR'S CERTIFICATE**

I, BROCK J. SLAUGH, DO HEREBY CERTIFY THAT I AM A PROFESSIONAL LAND SURVEYOR AND THAT I HOLD CERTIFICATE #38443 AS PRESCRIBED BY THE LAWS OF THE STATE OF COLORADO. I FURTHER CERTIFY THAT THIS PLAT AND ITS COMPUTATIONS AND FIELD SURVEYS NECESSARY FOR THE DATA COMPILED HEREON WERE MADE BY ME OR UNDER MY SUPERVISION AND THE SAME ARE TRUE AND CORRECT TO THE BEST OF MY KNOWLEDGE AND BELIEF; THAT THE SURVEY WAS PERFORMED IN ACCORDANCE WITH APPLICABLE STANDARDS OF PRACTICE AND I AM NOT PROVIDING A GUARANTY OR WARRANTY, EITHER EXPRESSED OR IMPLIED, THIS CERTIFICATE DOES NOT REPRESENT A LAND SURVEY PLAT OR IMPROVEMENT SURVEY PLAT AS DEFINED BY C.R.S. § 38-5-102 AND CANNOT BE RELIED UPON TO DETERMINE OWNERSHIP.

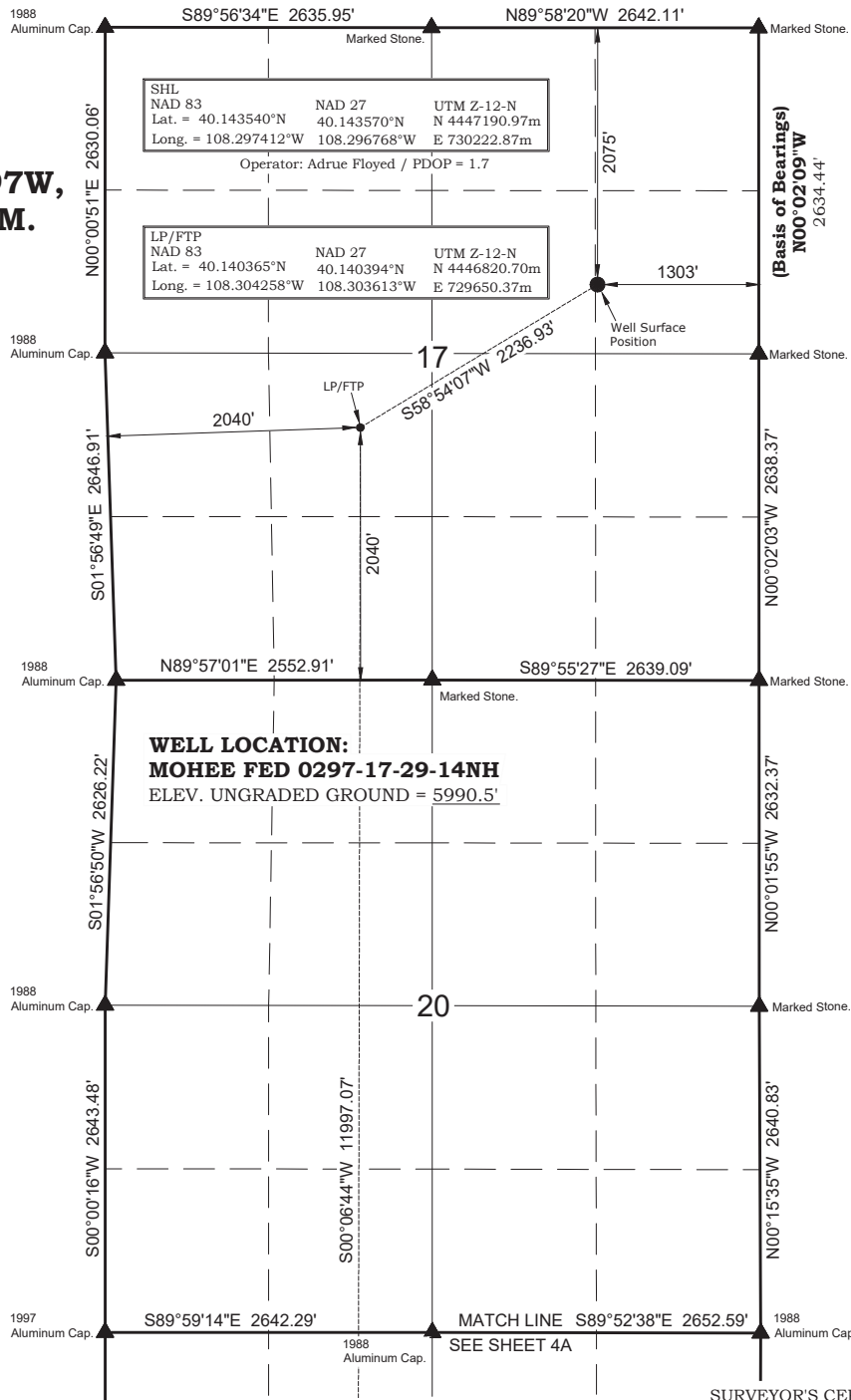
*Brock J. Slauch*  
38443  
PROFESSIONAL LAND SURVEYOR

**TIMBERLINE**

ENGINEERING & LAND SURVEYING, INC.  
209 NORTH 300 WEST - VERNAL, UTAH 84078

DATE SURVEYED: 7-11-23	SURVEYED BY: C.S.	SHEET
DATE DRAWN: 8-29-23	DRAWN BY: S.A.	<b>3A</b>
SCALE: 1" = 1000'	Date Last Revised: 9-27-23 S.A.	OF 39

T2N, R97W,  
6th P.M.



NOTES:

▲ = Section Corners Located

△ = Section Corners Located Not Monumented

- Well footages are measured at right angles to the Section Lines.
- Bearings and distances shown on this plat are based upon a local Cartesian Grid which is oriented to Geodetic North at the SE Corner of Section 36, T2N, R97W, 6th P.M. The grid having a mean project height of 6,250'. Lineal units used are U.S. Survey Foot. Trimble G.P.S. equipment was used in performance of this survey.
- Latitude and Longitude are NAD 83 (2011) Epoch 2010. Elevations are NAVD 88. Which are derived from an NGS OPUS Report.

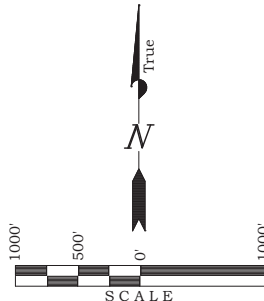
**ANSCHUTZ**

**EXPLORATION CORPORATION**

555 17th Street, Suite 2400 - Denver, Colorado 80202

**WELL PLAT**

**MOHEE FED 0297-17-29-14NH**  
**600' FSL & 2040' FWL (Bottom Hole)**  
**SE 1/4 SW 1/4 OF SECTION 29, T2N, R97W,**  
**6th P.M., RIO BLANCO COUNTY, COLORADO**



**SURVEYOR'S CERTIFICATE**

I, BROCK J. SLAUGH, DO HEREBY CERTIFY THAT I AM A PROFESSIONAL LAND SURVEYOR AND THAT I HOLD CERTIFICATE #38443 AS PRESCRIBED BY THE LAWS OF THE STATE OF COLORADO. I FURTHER CERTIFY THAT THIS PLAT AND ITS COMPUTATIONS AND FIELD SURVEYS NECESSARY FOR THE DATA COMPILED HEREON WERE MADE BY ME OR UNDER MY SUPERVISION AND THE SAME ARE TRUE AND CORRECT TO THE BEST OF MY KNOWLEDGE AND BELIEF; THAT THE SURVEY WAS PERFORMED IN ACCORDANCE WITH APPLICABLE STANDARDS OF PRACTICE AND I AM NOT PROVIDING A GUARANTY OR WARRANTY, EITHER EXPRESSED OR IMPLIED, THIS CERTIFICATE DOES NOT REPRESENT A LAND SURVEY PLAT OR IMPROVEMENT SURVEY PLAT AS DEFINED BY C.R.S. § 38-5-102 AND CANNOT BE RELIED UPON TO DETERMINE OWNERSHIP.

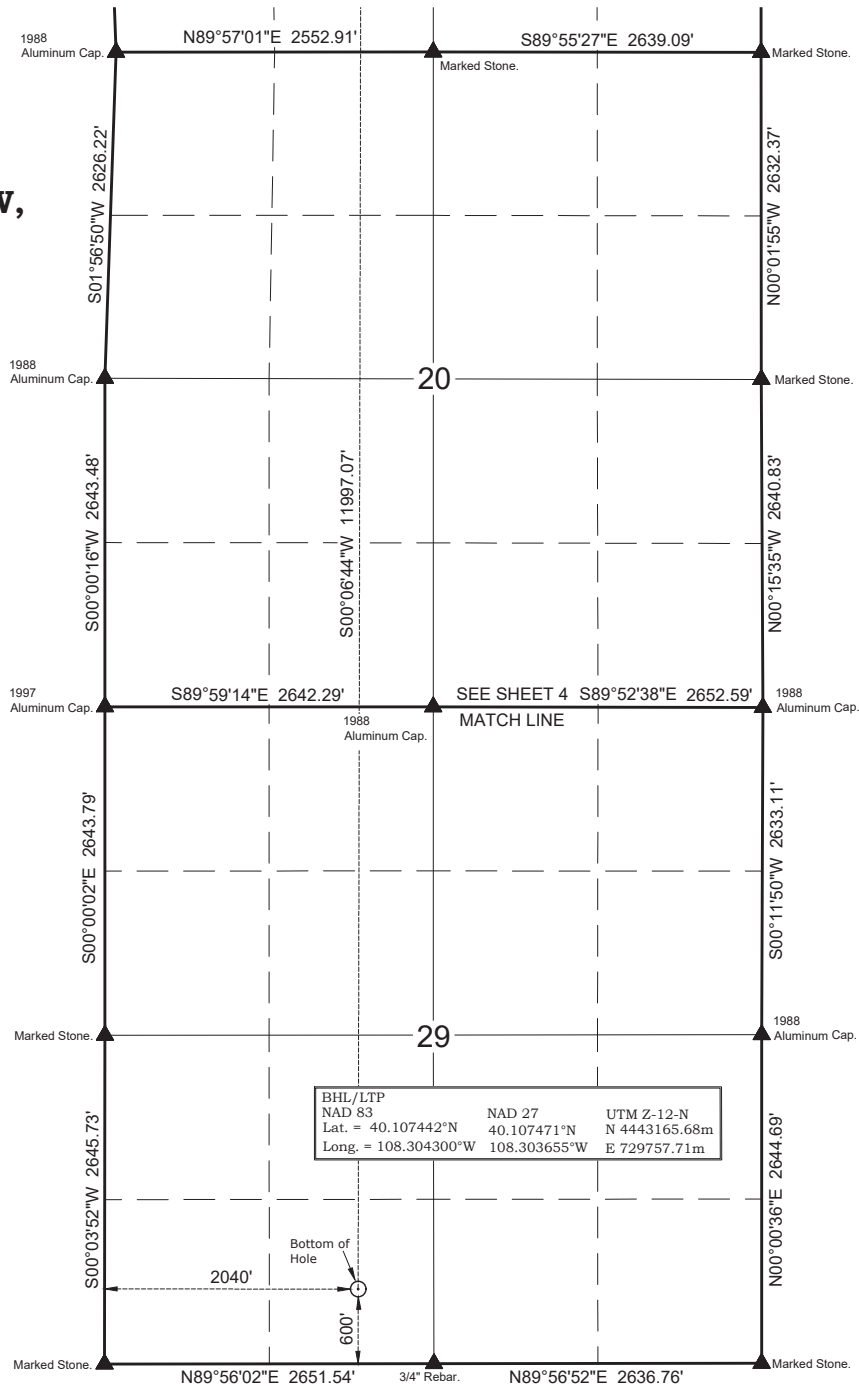
*Brock J. Slauch*  
PROFESSIONAL LAND SURVEYOR  
38443

**TIMBERLINE**

ENGINEERING & LAND SURVEYING, INC.  
209 NORTH 300 WEST - VERNAL, UTAH 84078

DATE SURVEYED: 7-11-23	SURVEYED BY: C.S.	SHEET <b>4</b>
DATE DRAWN: 8-29-23	DRAWN BY: S.A.	
SCALE: 1" = 1000'	Date Last Revised: 9-27-23 S.A.	OF 39

**T2N, R97W,  
6th P.M.**



**NOTES:**

▲ = Section Corners Located

△ = Section Corners Located Not Monumented

- Well footages are measured at right angles to the Section Lines.
- Bearings and distances shown on this plat are based upon a local Cartesian Grid which is oriented to Geodetic North at the SE Corner of Section 36, T2N, R97W, 6th P.M. The grid having a mean project height of 6,250'. Lineal units used are U.S. Survey Foot. Trimble G.P.S. equipment was used in performance of this survey.
- Latitude and Longitude are NAD 83 (2011) Epoch 2010. Elevations are NAVD 88. Which are derived from an NGS OPUS Report.

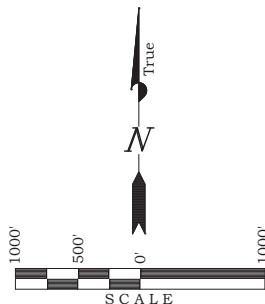
**ANSCHUTZ**

**EXPLORATION CORPORATION**

555 17th Street, Suite 2400 - Denver, Colorado 80202

**WELL PLAT**

**MOHEE FED 0297-17-29-14NH  
600' FSL & 2040' FWL (Bottom Hole)  
SE ¼ SW ¼ OF SECTION 29, T2N, R97W,  
6th P.M., RIO BLANCO COUNTY, COLORADO**



**SURVEYOR'S CERTIFICATE**

I, BROCK J. SLAUGH, DO HEREBY CERTIFY THAT I AM A PROFESSIONAL LAND SURVEYOR AND THAT I HOLD CERTIFICATE #38443 AS PRESCRIBED BY THE LAWS OF THE STATE OF COLORADO. I FURTHER CERTIFY THAT THIS PLAT AND ITS COMPUTATIONS AND FIELD SURVEYS NECESSARY FOR THE DATA COMPILED HEREON WERE MADE BY ME OR UNDER MY SUPERVISION AND THE SAME ARE TRUE AND CORRECT TO THE BEST OF MY KNOWLEDGE AND BELIEF; THAT THE SURVEY WAS PERFORMED IN ACCORDANCE WITH APPLICABLE STANDARDS OF PRACTICE AND I AM NOT PROVIDING A GUARANTY OR WARRANTY, EITHER EXPRESSED OR IMPLIED, THIS CERTIFICATE DOES NOT REPRESENT A LAND SURVEY PLAT OR IMPROVEMENT SURVEY PLAT AS DEFINED BY C.R.S. § 38-5-102 AND CANNOT BE RELIED UPON TO DETERMINE OWNERSHIP.

8-29-23  
38443  
Brock J. Slauch  
PROFESSIONAL LAND SURVEYOR  
STATE OF COLORADO

**TIMBERLINE**

ENGINEERING & LAND SURVEYING, INC.  
209 NORTH 300 WEST - VERNAL, UTAH 84078

DATE SURVEYED: 7-11-23	SURVEYED BY: C.S.	SHEET
DATE DRAWN: 8-29-23	DRAWN BY: S.A.	4A
SCALE: 1" = 1000'	Date Last Revised: 9-27-23 S.A.	OF 39

[illegible]

MOHEE FED 0297-17-29-15 WNH  
600' FSL & 2020' FEL (Bottom Hole)  
SW ¼ SE ¼ OF SECTION 29, T2N, R97W,  
6th P.M., RIO BLANCO COUNTY, COLORADO

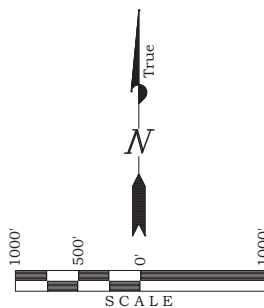
DEFINED BY C.S.S. 30-104(2) ST. 1991, C.A.N. 1 BE  
O DETERMINE OWNERSHIP.

3-27-23  
38443

PROFESSIONAL LAND SURVEYOR

*[Signature]*

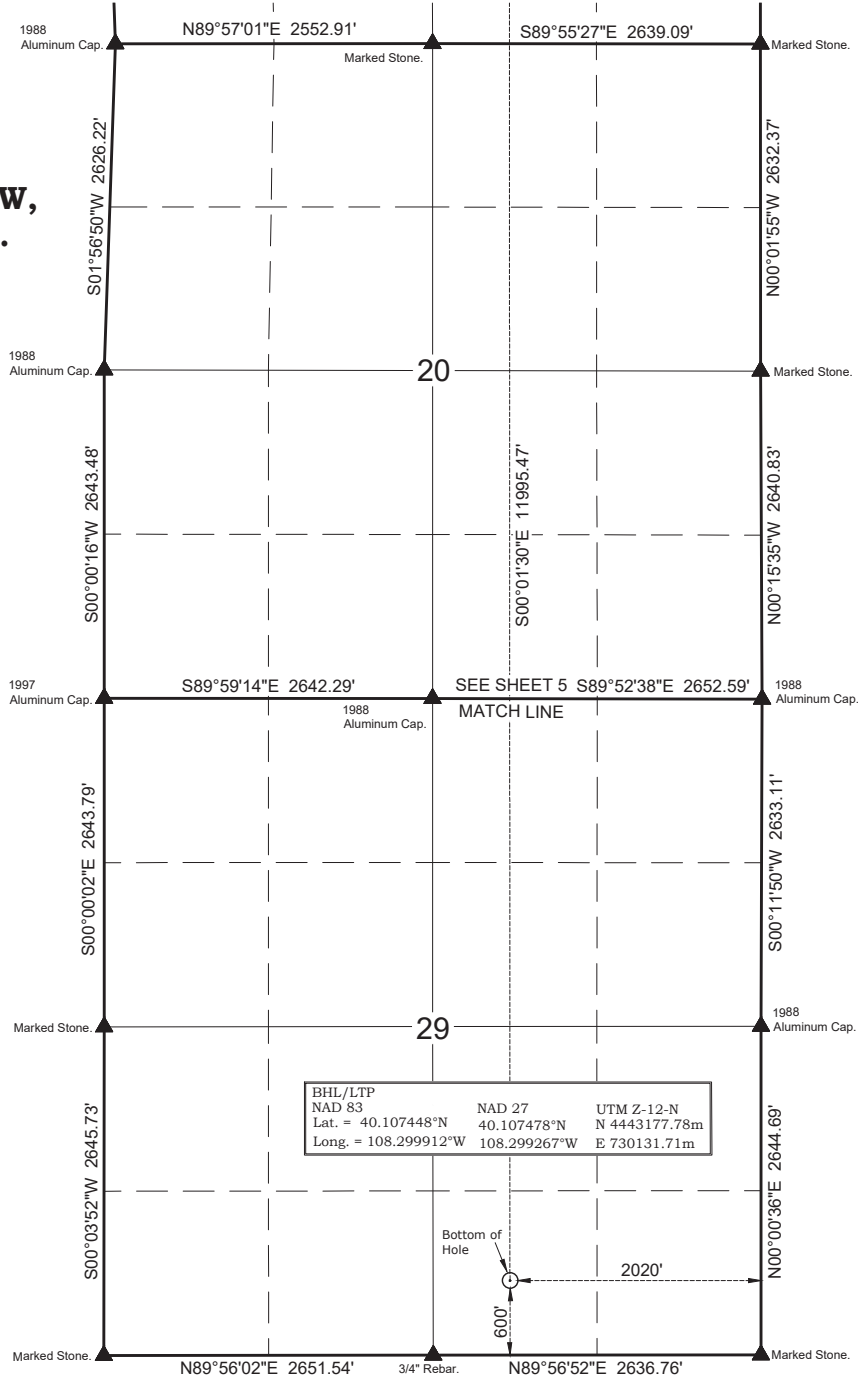
PROFESSIONAL LAND SURVEYOR



OF 39



T2N, R97W,  
6th P.M.



NOTES:

▲ = Section Corners Located

△ = Section Corners Located Not Monumented

- Well footages are measured at right angles to the Section Lines.
- Bearings and distances shown on this plat are based upon a local Cartesian Grid which is oriented to Geodetic North at the SE Corner of Section 36, T2N, R97W, 6th P.M. The grid having a mean project height of 6,250'. Lineal units used are U.S. Survey Foot. Trimble G.P.S. equipment was used in performance of this survey.
- Latitude and Longitude are NAD 83 (2011) Epoch 2010. Elevations are NAVD 88. Which are derived from an NGS OPUS Report.

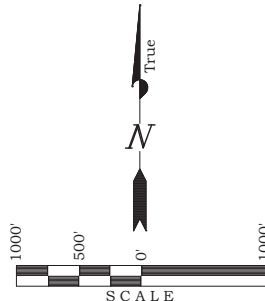
ANSCHUTZ

EXPLORATION CORPORATION

555 17th Street, Suite 2400 - Denver, Colorado 80202

WELL PLAT

MOHEE FED 0297-17-29-15 WNH  
600' FSL & 2020' FEL (Bottom Hole)  
SW ¼ SE ¼ OF SECTION 29, T2N, R97W,  
6th P.M., RIO BLANCO COUNTY, COLORADO



SURVEYOR'S CERTIFICATE

I, BROCK J. SLAUGH, DO HEREBY CERTIFY THAT I AM A PROFESSIONAL LAND SURVEYOR AND THAT I HOLD CERTIFICATE #38443 AS PRESCRIBED BY THE LAWS OF THE STATE OF COLORADO. I FURTHER CERTIFY THAT THIS PLAT AND ITS COMPUTATIONS AND FIELD SURVEYS NECESSARY FOR THE DATA COMPILED HEREON WERE MADE BY ME OR UNDER MY SUPERVISION AND THE SAME ARE TRUE AND CORRECT TO THE BEST OF MY KNOWLEDGE AND BELIEF; THAT THE SURVEY WAS PERFORMED IN ACCORDANCE WITH APPLICABLE STANDARDS OF PRACTICE AND I AM NOT PROVIDING A GUARANTY OR WARRANTY, EITHER EXPRESSED OR IMPLIED, THIS CERTIFICATE DOES NOT REPRESENT A LAND SURVEY PLAT OR IMPROVEMENT SURVEY PLAT AS DEFINED BY C.R.S. § 38-5-102 AND CANNOT BE RELIED UPON TO DETERMINE OWNERSHIP.

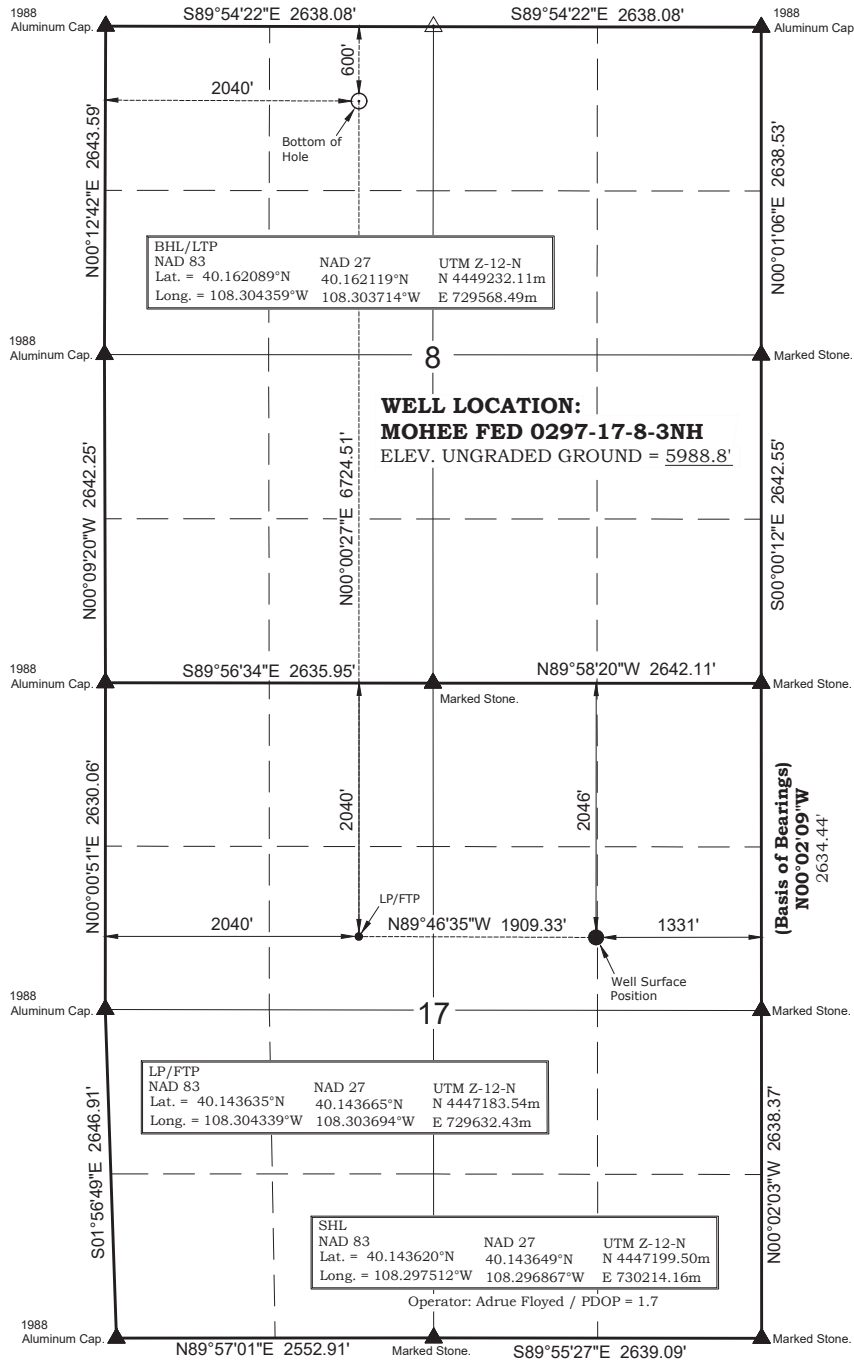
PROFESSIONAL LAND SURVEYOR  
BROCK J. SLAUGH  
38443

TIMBERLINE

ENGINEERING & LAND SURVEYING, INC.  
209 NORTH 300 WEST - VERNAL, UTAH 84078

DATE SURVEYED: 7-11-23	SURVEYED BY: C.S.	SHEET
DATE DRAWN: 8-29-23	DRAWN BY: S.A.	5A
SCALE: 1" = 1000'	Date Last Revised: 9-27-13 S.A.	OF 39

# T2N, R97W, 6th P.M.



## NOTES:

▲ = Section Corners Located

△ = Section Corners Located Not Monumented

- Well footages are measured at right angles to the Section Lines.
- Bearings and distances shown on this plat are based upon a local Cartesian Grid which is oriented to Geodetic North at the SE Corner of Section 36, T2N, R97W, 6th P.M. The grid having a mean project height of 6,250'. Lineal units used are U.S. Survey Foot. Trimble G.P.S. equipment was used in performance of this survey.
- Latitude and Longitude are NAD 83 (2011) Epoch 2010. Elevations are NAVD 88. Which are derived from an NGS OPUS Report.

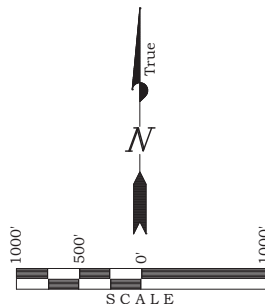
## ANSCHUTZ

## EXPLORATION CORPORATION

555 17th Street, Suite 2400 - Denver, Colorado 80202

## WELL PLAT

MOHEE FED 0297-17-8-3NH  
600' FNL & 2040' FWL (Bottom Hole)  
NE ¼ NW ¼ OF SECTION 8, T2N, R97W,  
6th P.M., RIO BLANCO COUNTY, COLORADO



## SURVEYOR'S CERTIFICATE

I, BROCK J. SLAUGH, DO HEREBY CERTIFY THAT I AM A PROFESSIONAL LAND SURVEYOR AND THAT I HOLD CERTIFICATE #38443 AS PRESCRIBED BY THE LAWS OF THE STATE OF COLORADO. I FURTHER CERTIFY THAT THIS PLAT AND ITS COMPUTATIONS AND FIELD SURVEYS NECESSARY FOR THE DATA COMPILED HEREON WERE MADE BY ME OR UNDER MY SUPERVISION AND THE SAME ARE TRUE AND CORRECT TO THE BEST OF MY KNOWLEDGE AND BELIEF; THAT THE SURVEY WAS PERFORMED IN ACCORDANCE WITH APPLICABLE STANDARDS OF PRACTICE AND I AM PROVIDING A GUARANTY OR WARRANTY, EITHER EXPRESSED OR IMPLIED, THIS CERTIFICATE DOES NOT REPRESENT A LAND SURVEY PLAT OR IMPROVEMENT SURVEY PLAT AS DEFINED BY C.R.S. § 38-5-102 AND CANNOT BE RELIED UPON TO DETERMINE OWNERSHIP.

38443  
PROFESSIONAL LAND SURVEYOR

## TIMBERLINE

ENGINEERING & LAND SURVEYING, INC.  
209 NORTH 300 WEST - VERNAL, UTAH 84078

DATE SURVEYED: 7-11-23	SURVEYED BY: C.S.	SHEET 6 OF 39
DATE DRAWN: 8-29-23	DRAWN BY: S.A.	
SCALE: 1" = 1000'	Date Last Revised: 9-27-23 S.A.	

**7W, M.**

1988 Aluminum Cap. S89°56'34"E 2635.95' Marked Stone. N89°58'20"W 2642.11' Marked Stone.

SHL  
NAD 83  
Lat. = 40.143659°N 40.143689°N UTM Z-12-N  
Long. = 108.297561°W 108.296916°W E 730209.80m  
Operator: Adrue Floyd / PDOP = 1.7

LP/FTP  
NAD 83  
Lat. = 40.140367°N 40.140397°N UTM Z-12-N  
Long. = 108.299613°W 108.298968°W E 730046.11m

2032'  
1344'  
Well Surface Position

17  
1329.82'  
S25°36'32"W  
LP/FTP  
2040'  
1920'

1988 Aluminum Cap. S01°56'49"E 2646.91' Marked Stone. N89°57'01"E 2552.91' Marked Stone. S89°55'27"E 2639.09' Marked Stone.

**WELL LOCATION:  
MOHEE FED 0297-17-29-15NH**  
ELEV. UNGRADED GROUND = 5987.2'

1988 Aluminum Cap. S01°56'50"W 2626.22' Marked Stone. N00°02'03"W 2638.37' Marked Stone.

20  
S00°00'16"W 2643.48' Marked Stone. S00°01'30"E 11995.25' Marked Stone. N00°01'55"W 2632.37' Marked Stone.

1997 Aluminum Cap. S89°59'14"E 2642.29' Marked Stone. MATCH LINE SEE SHEET 7A S89°52'38"E 2652.59' Marked Stone. 1988 Aluminum Cap.

SURVEYOR'S C

NOTES:

- OPUS Report. **ANSCHUTZ**  
**EXPLORATION CORPORATION**  
555 17th Street, Suite 2400 - Denver, Colorado 80202

MOHEE FED 0297-17-29-15NH  
600' FSL & 1920' FEL (Bottom Hole)  
SW ¼ SE ¼ OF SECTION 29, T2N, R97W,  
6th P.M., RIO BLANCO COUNTY, COLORADO

### SURVEYOR'S CERTIFICATE

I, BROCK J. SLAUGH, DO HEREBY CERTIFY THAT I AM A PROFESSIONAL LAND SURVEYOR AND THAT I HOLD CERTIFICATE #38443 AS PRESCRIBED BY THE LAWS OF THE STATE OF COLORADO. I FURTHER CERTIFY THAT THIS PLAT AND ITS COMPUTATIONS AND FIELD SURVEYS NECESSARY FOR THE DATA COMPILED HEREON WERE MADE BY ME OR UNDER MY SUPERVISION AND THE SAME ARE TRUE AND CORRECT TO THE BEST OF MY KNOWLEDGE AND BELIEF. THIS SURVEY AND HEREON IS CONDUCTED IN ACCORDANCE WITH APPLICABLE STANDARDS OF PRACTICE AND NO GUARANTEE OR WARRANTY, EITHER EXPRESSED OR IMPLIED, IN THIS CERTIFICATE DOES NOT REPRESENT A LAND SURVEY PLAT OR IMPROVEMENT SURVEY PLAT AS DEFINED BY C.R.S. 38-5-102(2) AND CANNOT BE RELIED UPON TO DETERMINE OWNERSHIP.

PROFESSIONAL LAND SURVEYOR

## TIMBERLINE

ENGINEERING & LAND SURVEYING, INC.  
209 NORTH 300 WEST - VERNAL, UTAH 84078

DATE SURVEYED:  
7.11.03

SURVEYED BY: C.S.
DRAWN BY: S.A.

SCALE: 1" = 1000'

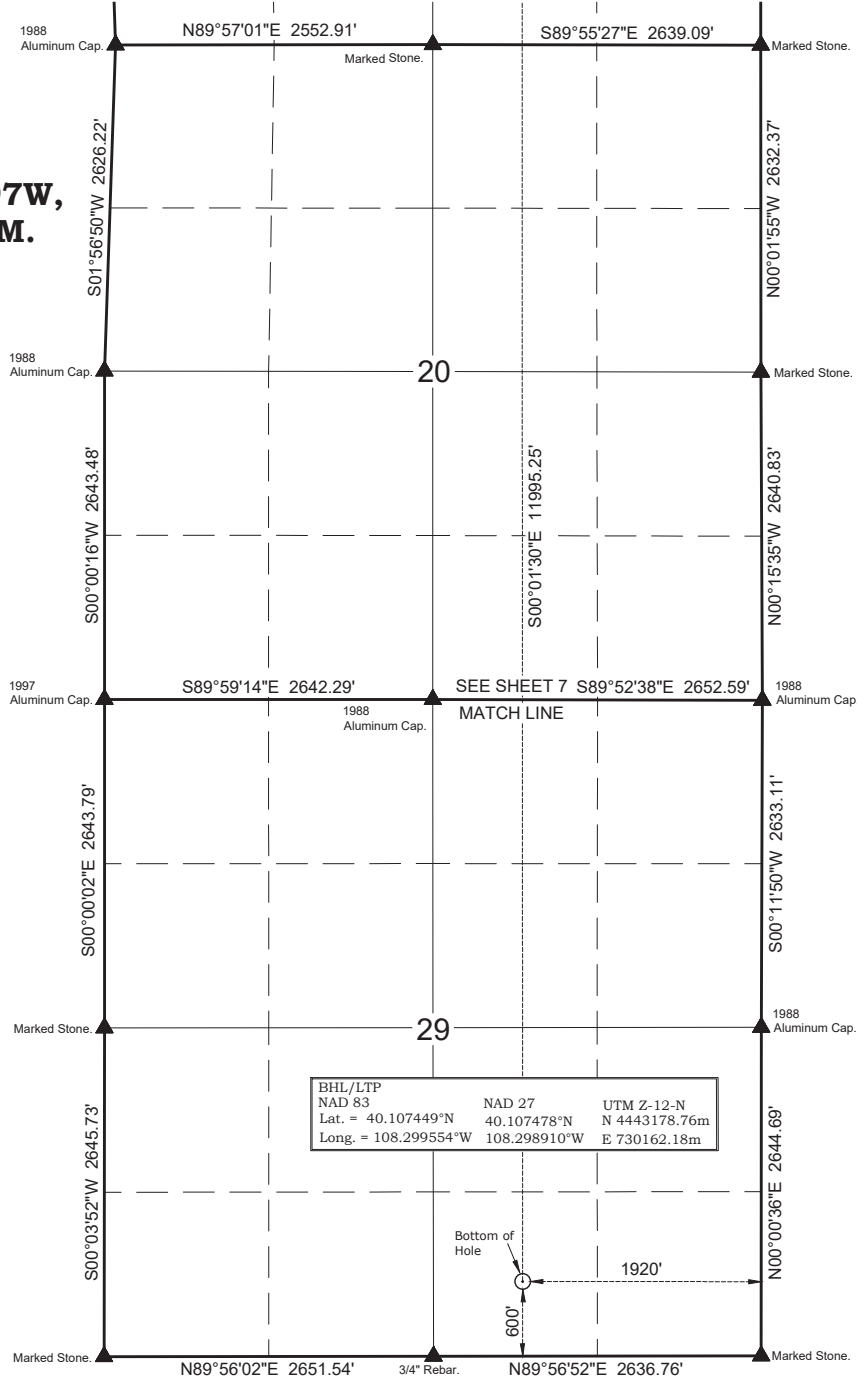
Date Last Revised:  
9-27-23 S.A.

SHEET

7

OF 39

T2N, R97W,  
6th P.M.



NOTES:

▲ = Section Corners Located

△ = Section Corners Located Not Monumented

- Well footages are measured at right angles to the Section Lines.
- Bearings and distances shown on this plat are based upon a local Cartesian Grid which is oriented to Geodetic North at the SE Corner of Section 36, T2N, R97W, 6th P.M. The grid having a mean project height of 6,250'. Lineal units used are U.S. Survey Foot. Trimble G.P.S. equipment was used in performance of this survey.
- Latitude and Longitude are NAD 83 (2011) Epoch 2010. Elevations are NAVD 88. Which are derived from an NGS OPUS Report.

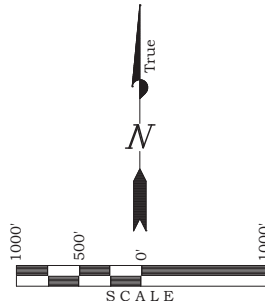
**ANSCHUTZ**

**EXPLORATION CORPORATION**

555 17th Street, Suite 2400 - Denver, Colorado 80202

**WELL PLAT**

**MOHEE FED 0297-17-29-15NH**  
**600' FSL & 1920' FEL (Bottom Hole)**  
**SW ¼ SE ¼ OF SECTION 29, T2N, R97W,**  
**6th P.M., RIO BLANCO COUNTY, COLORADO**



**SURVEYOR'S CERTIFICATE**

I, BROCK J. SLAUGH, DO HEREBY CERTIFY THAT I AM A PROFESSIONAL LAND SURVEYOR AND THAT I HOLD CERTIFICATE #38443 AS PRESCRIBED BY THE LAWS OF THE STATE OF COLORADO. I FURTHER CERTIFY THAT THIS PLAT AND ITS COMPUTATIONS AND FIELD SURVEYS NECESSARY FOR THE DATA COMPILED HEREON WERE MADE BY ME OR UNDER MY SUPERVISION AND THE SAME ARE TRUE AND CORRECT TO THE BEST OF MY KNOWLEDGE AND BELIEF; THAT THE SURVEY WAS PERFORMED IN ACCORDANCE WITH APPLICABLE STANDARDS OF PRACTICE AND I AM NOT PROVIDING A GUARANTY OR WARRANTY, EITHER EXPRESSED OR IMPLIED, THIS CERTIFICATE DOES NOT REPRESENT A LAND SURVEY PLAT OR IMPROVEMENT SURVEY PLAT AS DEFINED BY C.R.S. § 38-5-102 AND CANNOT BE RELIED UPON TO DETERMINE OWNERSHIP.

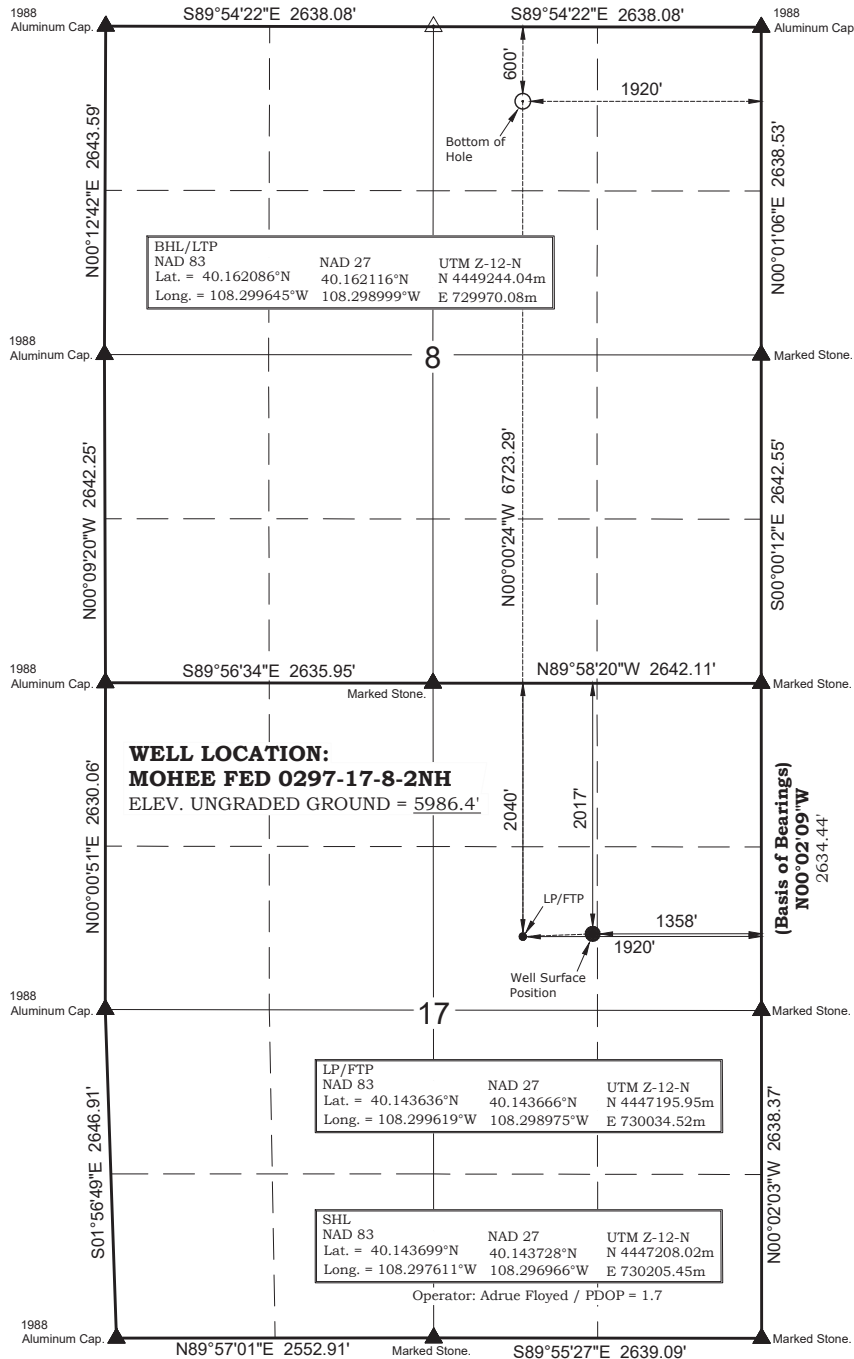
*Brock J. Slauch*  
PROFESSIONAL LAND SURVEYOR  
38443

**TIMBERLINE**

ENGINEERING & LAND SURVEYING, INC.  
209 NORTH 300 WEST - VERNAL, UTAH 84078

DATE SURVEYED: 7-11-23	SURVEYED BY: C.S.	SHEET <b>7A</b>
DATE DRAWN: 8-29-23	DRAWN BY: S.A.	OF 39
SCALE: 1" = 1000'	Date Last Revised: 9-27-23 S.A.	

# T2N, R97W, 6th P.M.



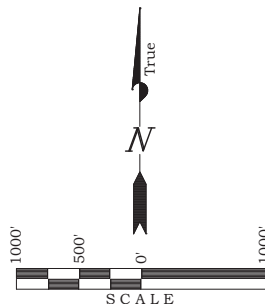
## NOTES:

- ▲ = Section Corners Located
- △ = Section Corners Located Not Monumented
- 1. Well footages are measured at right angles to the Section Lines.
- 2. Bearings and distances shown on this plat are based upon a local Cartesian Grid which is oriented to Geodetic North at the SE Corner of Section 36, T2N, R97W, 6th P.M. The grid having a mean project height of 6,250'. Lineal units used are U.S. Survey Foot. Trimble G.P.S. equipment was used in performance of this survey.
- 3. Latitude and Longitude are NAD 83 (2011) Epoch 2010. Elevations are NAVD 88. Which are derived from an NGS OPUS Report.
- 4. LP/FTP Bears S87°43'16"W 562.23' from the Surface Position.

**ANSCHUTZ**  
**EXPLORATION CORPORATION**  
 555 17th Street, Suite 2400 - Denver, Colorado 80202

## WELL PLAT

**MOHEE FED 0297-17-8-2NH**  
**600' FNL & 1920' FEL (Bottom Hole)**  
**NW ¼ NE ¼ OF SECTION 8, T2N, R97W,**  
**6th P.M., RIO BLANCO COUNTY, COLORADO**



## SURVEYOR'S CERTIFICATE

I, BROCK J. SLAUGH, DO HEREBY CERTIFY THAT I AM A PROFESSIONAL LAND SURVEYOR AND THAT I HOLD CERTIFICATE #38443 AS PRESCRIBED BY THE LAWS OF THE STATE OF COLORADO. I FURTHER CERTIFY THAT THIS PLAT AND ITS COMPUTATIONS AND FIELD SURVEYS NECESSARY FOR THE DATA COMPILED HEREON WERE MADE BY ME OR UNDER MY SUPERVISION AND THE SAME ARE TRUE AND CORRECT TO THE BEST OF MY KNOWLEDGE AND BELIEF; THAT THE SURVEY WAS PERFORMED IN ACCORDANCE WITH APPLICABLE STANDARDS OF PRACTICE AND I AM PROVIDING A GUARANTY OR WARRANTY, EITHER EXPRESSED OR IMPLIED, THIS CERTIFICATE DOES NOT REPRESENT A LAND SURVEY PLAT OR IMPROVEMENT SURVEY PLAT AS DEFINED BY C.R.S. § 38-5-102 AND CANNOT BE RELIED UPON TO DETERMINE OWNERSHIP.

*Brock J. Slauch*  
 38443  
 PROFESSIONAL LAND SURVEYOR  
 STATE OF COLORADO

## TIMBERLINE

ENGINEERING & LAND SURVEYING, INC.  
 209 NORTH 300 WEST - VERNAL, UTAH 84078

DATE SURVEYED: 7-11-23	SURVEYED BY: C.S.	SHEET <b>8</b>
DATE DRAWN: 8-29-23	DRAWN BY: S.A.	
SCALE: 1" = 1000'	Date Last Revised: 9-27-23 S.A.	OF 39

