

Inspection Photos

3/20/2024

Operator: ANSCHUTZ EXPLORATION CORP
#3104

Location ID: 315979

Inspection Doc: 696205703

Rio Blanco County, CO

Aaron Trujillo
NW Reclamation Specialist
CECMC



COLORADO

**Energy & Carbon Management
Commission**

Department of Natural Resources

Inspection Photos

Operator Name: ANSCHUTZ EXPLORATION CORP #3104

Location ID: 315979



Photo 1: Photos 1-2 taken from Location entrance on the south end of the Location. Photos provide an overview of the Location from west, northwest, northeast to east.



COLORADO

**Energy & Carbon Management
Commission**

Department of Natural Resources

Inspection Photos

Operator Name: ANSCHUTZ EXPLORATION CORP #3104

Location ID: 315979



March 20, 2024



March 20, 2024

Photo 2: See comments under photo 1.



COLORADO

**Energy & Carbon Management
Commission**

Department of Natural Resources

Inspection Photos

Operator Name: ANSCHUTZ EXPLORATION CORP #3104

Location ID: 315979

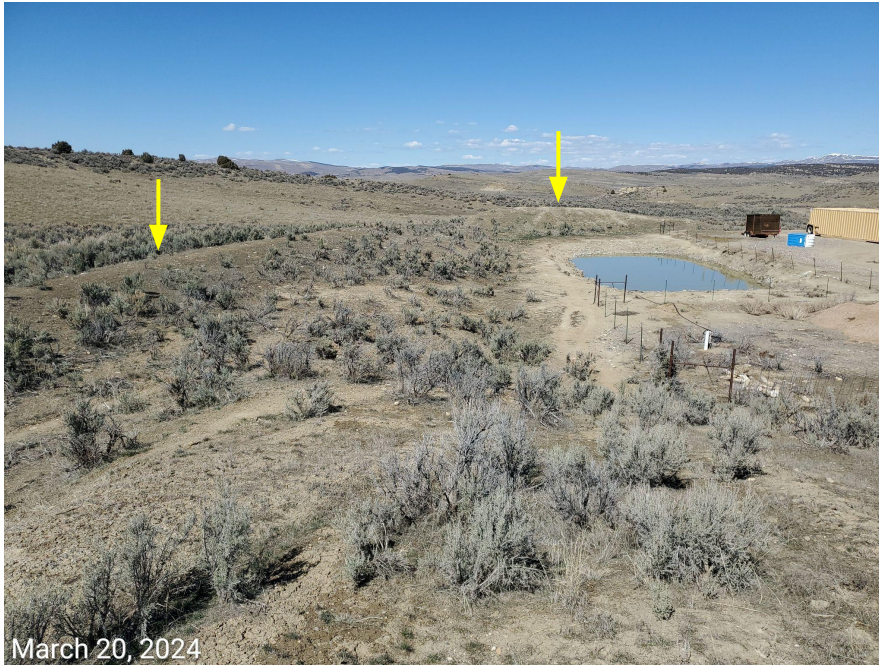


Photo 3: Photos taken from the soil stockpile on the southwest end of the Location. Photos provide an overview of the Location from north and northeast. Photo left shows locations of other stockpiles stored on the Location.



COLORADO

**Energy & Carbon Management
Commission**

Department of Natural Resources

Inspection Photos

Operator Name: ANSCHUTZ EXPLORATION CORP #3104

Location ID: 315979



Photo 4: Photo taken from the soil stockpile on the southwest end of the Location, facing west. Photo shows Operator appears to be using the stockpile on the southern end of the Location as a borrow area. This has resulted in unstabilized soils, and sediment transport. BMPs to protect stockpiles on Location from contamination, compaction, wind and water erosion, as well as to prevent weed establishment are missing or insufficient.



COLORADO

**Energy & Carbon Management
Commission**

Department of Natural Resources

Inspection Photos

Operator Name: ANSCHUTZ EXPLORATION CORP #3104

Location ID: 315979



Photo 5: Continued from photo 4. Photos 5-6 also show Noxious weeds (Halogeton) observed established on the stockpiles of the Location. BMPs to protect stockpiles on Location from contamination, compaction, wind and water erosion, as well as to prevent weed establishment are missing or insufficient.



COLORADO

**Energy & Carbon Management
Commission**

Department of Natural Resources

Inspection Photos

Operator Name: ANSCHUTZ EXPLORATION CORP #3104

Location ID: 315979



Photo 6: See comments under photo 4 and 5.



COLORADO

**Energy & Carbon Management
Commission**

Department of Natural Resources

Inspection Photos

Operator Name: ANSCHUTZ EXPLORATION CORP #3104

Location ID: 315979



Photo 7: Photo of tank battery facility on the southeast end of the Location, facing east. Signage pursuant to Rule 605.e not posted.

Inspection Photos

Operator Name: ANSCHUTZ EXPLORATION CORP #3104

Location ID: 315979



Photo 8: Photos taken from tanks at the battery facility. Photos examples showing signage at tanks are missing required information, or information is inaccurate pursuant to Rule 605.h.



COLORADO

**Energy & Carbon Management
Commission**

Department of Natural Resources

Inspection Photos

Operator Name: ANSCHUTZ EXPLORATION CORP #3104

Location ID: 315979



Photo 9: Photos taken from, what appears to be, two methanol containers on the northeast end of the Location. Signage/labels on containers no longer legible.



COLORADO

**Energy & Carbon Management
Commission**

Department of Natural Resources

Inspection Photos

Operator Name: ANSCHUTZ EXPLORATION CORP #3104

Location ID: 315979



Photo 10: Continued from photo 9. Photo shows fluids within secondary containment. Photo also shows wildlife protection BMPs are missing or insufficient at the containment measure.



COLORADO

**Energy & Carbon Management
Commission**

Department of Natural Resources

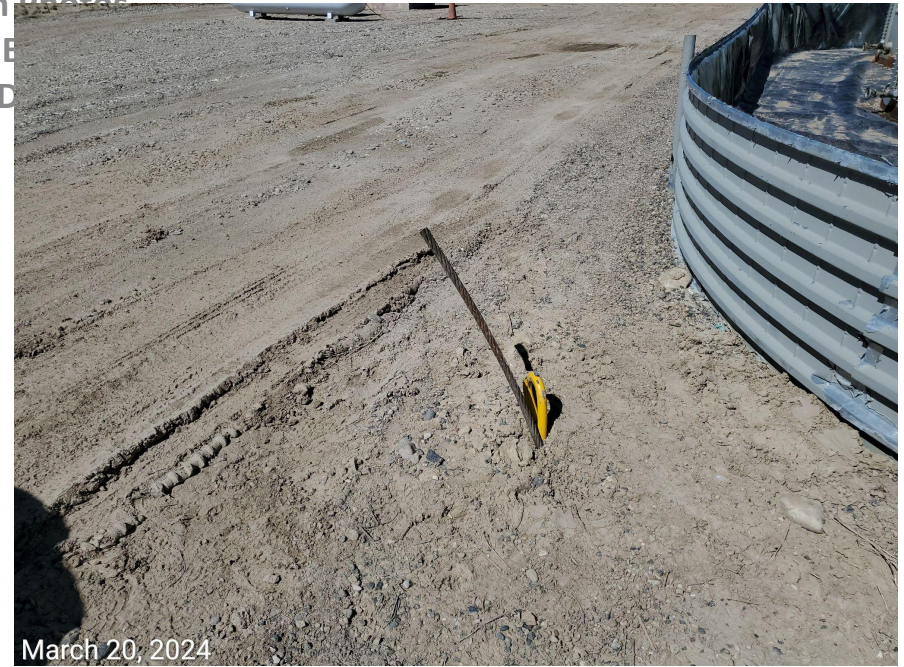


Photo 11: Photos examples showing anchors on the Location have either not been marked, or haven't been marked in accordance with Rule 1003.a and 603.j requirements.



Inspection Photos

Operator Name: ANSCHUTZ EXPLORATION CORP #3104

Location ID: 315979

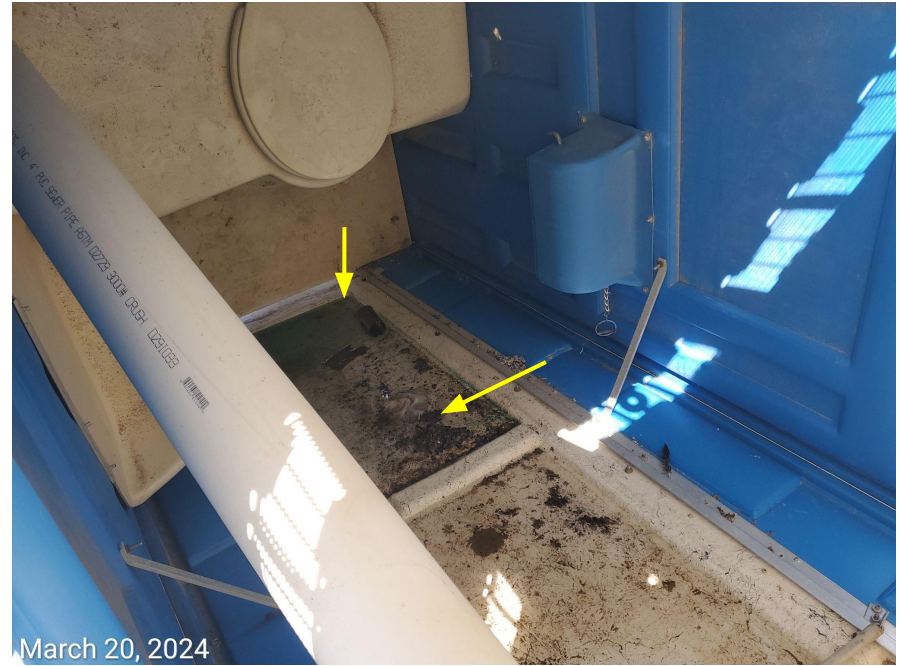


Photo 12: Photos taken from the northwest end of the working pad surface. Photos show a Sanitary Facility (Porta-John) on Location has not been properly secured and is currently laying on its side. Waste and fluids observed spilled within the facility.



COLORADO

**Energy & Carbon Management
Commission**

Department of Natural Resources

Inspection Photos

Operator Name: ANSCHUTZ EXPLORATION CORP #3104

Location ID: 315979



Photo 13: Photos 13-19 taken throughout the Location, including the tank battery facility. Photos are examples showing various trash, debris and/or unused equipment observed improperly stored on the Location; the storage, placement, or maintenance of equipment, vehicles, trailers, commercial products, Chemicals, drums, totes, Containers, materials, and all other supplies not necessary for use on an Oil and Gas Locations is prohibited.



COLORADO

**Energy & Carbon Management
Commission**

Department of Natural Resources

Inspection Photos

Operator Name: ANSCHUTZ EXPLORATION CORP #3104

Location ID: 315979



Photo 14: See comments under photo 13.



COLORADO

**Energy & Carbon Management
Commission**

Department of Natural Resources

Inspection Photos

Operator Name: ANSCHUTZ EXPLORATION CORP #3104

Location ID: 315979



Photo 15: See comments under photo 13.



COLORADO

**Energy & Carbon Management
Commission**

Department of Natural Resources

Inspection Photos

Operator Name: ANSCHUTZ EXPLORATION CORP #3104

Location ID: 315979



Photo 16: See comments under photo 13.



COLORADO

**Energy & Carbon Management
Commission**

Department of Natural Resources

Inspection Photos

Operator Name: ANSCHUTZ EXPLORATION CORP #3104

Location ID: 315979



Photo 17: See comments under photo 13.



COLORADO

**Energy & Carbon Management
Commission**

Department of Natural Resources

Inspection Photos

Operator Name: ANSCHUTZ EXPLORATION CORP #3104

Location ID: 315979

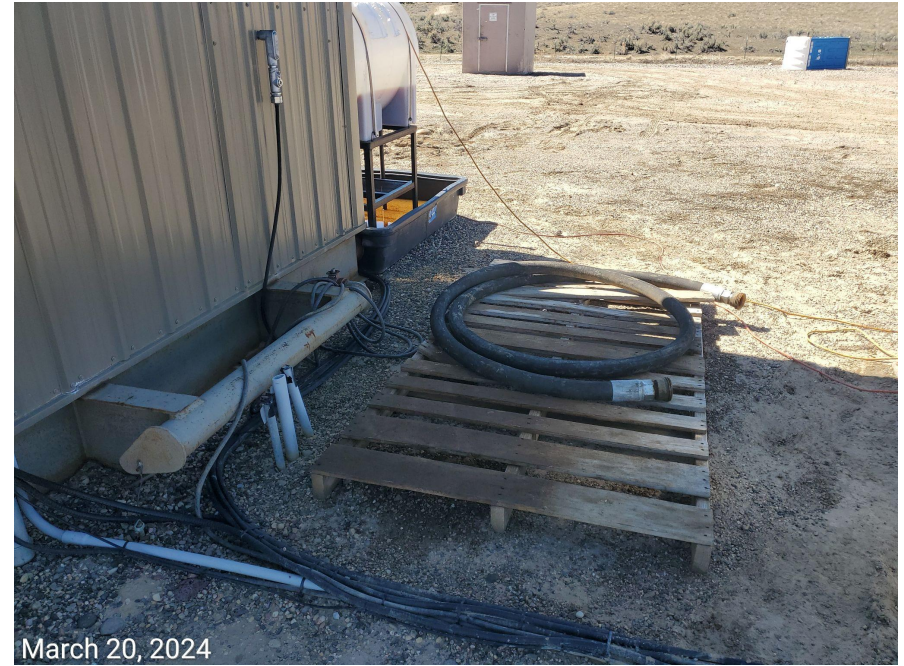


Photo 18: See comments under photo 13.



COLORADO

**Energy & Carbon Management
Commission**

Department of Natural Resources

Inspection Photos

Operator Name: ANSCHUTZ EXPLORATION CORP #3104

Location ID: 315979



Photo 19: See comments under photo 13.



COLORADO

**Energy & Carbon Management
Commission**

Department of Natural Resources