



Bayswater Exploration & Production LLC LONG STRING POST JOB REPORT

**Ruby West #9R 05-123-51842-00
S:7 T:7N R:65W Weld CO**

CallSheet #: 84409
Proposal #: 64779



LONG STRING Post Job Report

Attention: Trevor Smith | (720) 335-9045 | trevor.smith@iptenergyservices.com
Bayswater Exploration & Production LLC
730 17TH STREET | DENVER, CO 80202

Dear Trevor Smith,

Thank you for the opportunity to provide cementing services on this well. American Cementing strives to achieve complete customer satisfaction. If you have any questions regarding the services or data provided, please contact American Cementing at any time.

Sincerely,

Aimee Sankovich

Field Engineer I | (307) 689-0323 | aimee.sankovich@americacementing.com

Field Office 1716 E Allison Rd, Cheyenne, WY 82007
Phone: (307) 414-0049

Job Details & Summary

Geometry

Type	Function	OD (in)	ID (in)	Weight (lb/ft)	Top (ft)	Bottom (ft)	Excess (%)
Casing	Outer	9.625	8.921	36	0	1563	0
Open Hole	Outer		8.5		1563	17952	5
Casing	Inner	5.5	4.778	20	0	17952	0

Equipment / People

Unit Type	Unit
Field Storage Silo	FSS-448
Field Storage Silo	FSS-461
Field Storage Silo	FSS-134
Cement Trailer Float	CTF-408
Light Duty Vehicles	LDV-013
Cement Pump Float	CPF-184

Timing

Event	Date/Time
Call Out	11/12/2022 13:00
Depart Facility	11/12/2022 16:00
On Location	11/12/2022 17:00
Rig Up Iron	11/12/2022 17:45
Job Started	11/12/2022 23:40
Job Completed	11/13/2022 03:15
Rig Down Iron	11/13/2022 03:45
Depart Location	11/13/2022 05:00

General Job Information

Metrics	Value
Well Fluid Density	10.7 lb/gal
Well Fluid Type	OBM
Rig Circulation Vol	2400 bbls
Rig Circulation Time	3 hours
Calculated Displacement	397 bbls
Actual Displacement	395 bbls
Total Spacer to Surface	80 bbls
Total CMT to Surface	56 bbls

Job Details

Metrics	Value
Flare Prior to Job	No
Flare Prior to Job	0 units
Flare During Job	No
Flare During Job	0 units
Flare at End of Job	No
Flare at End of Job	0 units
Well Full Prior to Job	Yes
Well Fluid Density Into Well	10.7 lb/gal
Well Fluid Density Out of Well	10.5 lb/gal

Job Details (cont.)

Metrics	Value
BHCT	225 °F
BHST	225 °F

Water Analysis

Metrics	Value	Recommended
Water Source	None	
Temperature	60 °F	50-80 °F
pH Level	7	5.5-8.5
Chlorides	0 mg/L	0-3000 mg/L
Total Alkalinity	140	0-1000
Total Hardness	100 mg/L	0-500 mg/L
Carbonates	60 mg/L	0-100 mg/L
Sulfates	200 mg/L	0-1500 mg/L
Potassium	450 mg/L	0-3000 mg/L
Iron	0.15 mg/L	0-300 mg/L

Circulation

Lost Circulation Experienced
No

Job Execution Information

Fluid	Product	Function	Density (lb/gal)	Yield (ft ³ /sk)	Water Rq. (gal/sk)	Water Rq. (gal/bbl)	Volume (sks)	Volume (bbl)	Designed Top (ft)
1	EZ Spacer II	Spacer	12.00					40.00	0
2	EZ Spacer II	Spacer	11.50					20.00	0
3	EZ Spacer II	Spacer	11.00					20.00	0
4	Lead	Lead	13.20	1.79	9.24		1050.00	334.79	0
5	Tail	Tail	13.50	1.50	7.57		1665.00	445.92	7601
6	Retarded Water + Chems	Displacement	8.37			41.43		10.00	17486
7	Water + Chems	DisplacementFinal	8.37			41.53		388.00	0

Job Fluid Details

Fluid	Type	Fluid	Product	Function	Conc.	Uom
1	Spacer	EZ Spacer II	WEIGHTING ADDITIVE, W-11	Heavyweight	242.31	lb/bbl
1	Spacer	EZ Spacer II	GW-86	Viscosifier	1.20	lb/bbl
1	Spacer	EZ Spacer II	R-31	Retarder	0.50	lb/bbl
1	Spacer	EZ Spacer II	R-7C	Retarder	2.00	lb/bbl
1	Spacer	EZ Spacer II	Surfactant, S-801c	Surfactant	1.00	gal/bbl
2	Spacer	EZ Spacer II	WEIGHTING ADDITIVE, W-11	Heavyweight	242.31	lb/bbl
2	Spacer	EZ Spacer II	GW-86	Viscosifier	1.20	lb/bbl
2	Spacer	EZ Spacer II	R-31	Retarder	0.50	lb/bbl
2	Spacer	EZ Spacer II	R-7C	Retarder	2.00	lb/bbl
2	Spacer	EZ Spacer II	Surfactant, S-801c	Surfactant	1.00	gal/bbl
3	Spacer	EZ Spacer II	WEIGHTING ADDITIVE, W-11	Heavyweight	242.31	lb/bbl
3	Spacer	EZ Spacer II	GW-86	Viscosifier	1.20	lb/bbl
3	Spacer	EZ Spacer II	R-31	Retarder	0.50	lb/bbl
3	Spacer	EZ Spacer II	R-7C	Retarder	2.00	lb/bbl
3	Spacer	EZ Spacer II	Surfactant, S-801c	Surfactant	1.00	gal/bbl
4	Lead	Lead	ASTM TYPE IL	Cement	70.00	%
4	Lead	Lead	FLY ASH (ROCKIES)	Extender	30.00	%
4	Lead	Lead	BA-90	BondEnhancer	7.00	lb/sk
4	Lead	Lead	BENTONITE	Viscosifier	2.00	%BWOB
4	Lead	Lead	EC-2	BondEnhancer	3.00	%BWOB
4	Lead	Lead	FL-24	FluidLoss	0.20	%BWOB
4	Lead	Lead	FL-66	FluidLoss	0.30	%BWOB
4	Lead	Lead	FP-24	Defoamer	0.30	%BWOB
4	Lead	Lead	GW-86	Viscosifier	0.10	%BWOB
4	Lead	Lead	SR-20	Retarder	0.15	%BWOB
5	Tail	Tail	CLASS G	Cement	50.00	%
5	Tail	Tail	FLY ASH (ROCKIES)	Extender	50.00	%
5	Tail	Tail	BENTONITE	Viscosifier	4.00	%BWOB
5	Tail	Tail	FL-24	FluidLoss	0.20	%BWOB
5	Tail	Tail	FP-24	Defoamer	0.30	%BWOB
5	Tail	Tail	GW-86	Viscosifier	0.10	%BWOB
5	Tail	Tail	SR-20	Retarder	0.13	%BWOB
5	Tail	Tail	STATIC FREE	Other	0.01	lb/sk
6	Displacement	Retarded Water + Chems	BIOCIDE,BIOC11139W	Biocide	0.01	gal/bbl
6	Displacement	Retarded Water + Chems	CI-27	Other	0.21	gal/bbl
6	Displacement	Retarded Water + Chems	OXYGEN SCAVENGER, OS-30	Other	0.17	gal/bbl
6	Displacement	Retarded Water + Chems	ResCare CS-2	ClayProtection	0.08	gal/bbl
6	Displacement	Retarded Water + Chems	SR-61L	Retarder	0.10	gal/bbl
7	DisplacementFinal	Water + Chems	BIOCIDE,BIOC11139W	Biocide	0.01	gal/bbl
7	DisplacementFinal	Water + Chems	CI-27	Other	0.21	gal/bbl
7	DisplacementFinal	Water + Chems	OXYGEN SCAVENGER, OS-30	Other	0.17	gal/bbl
7	DisplacementFinal	Water + Chems	ResCare CS-2	ClayProtection	0.08	gal/bbl

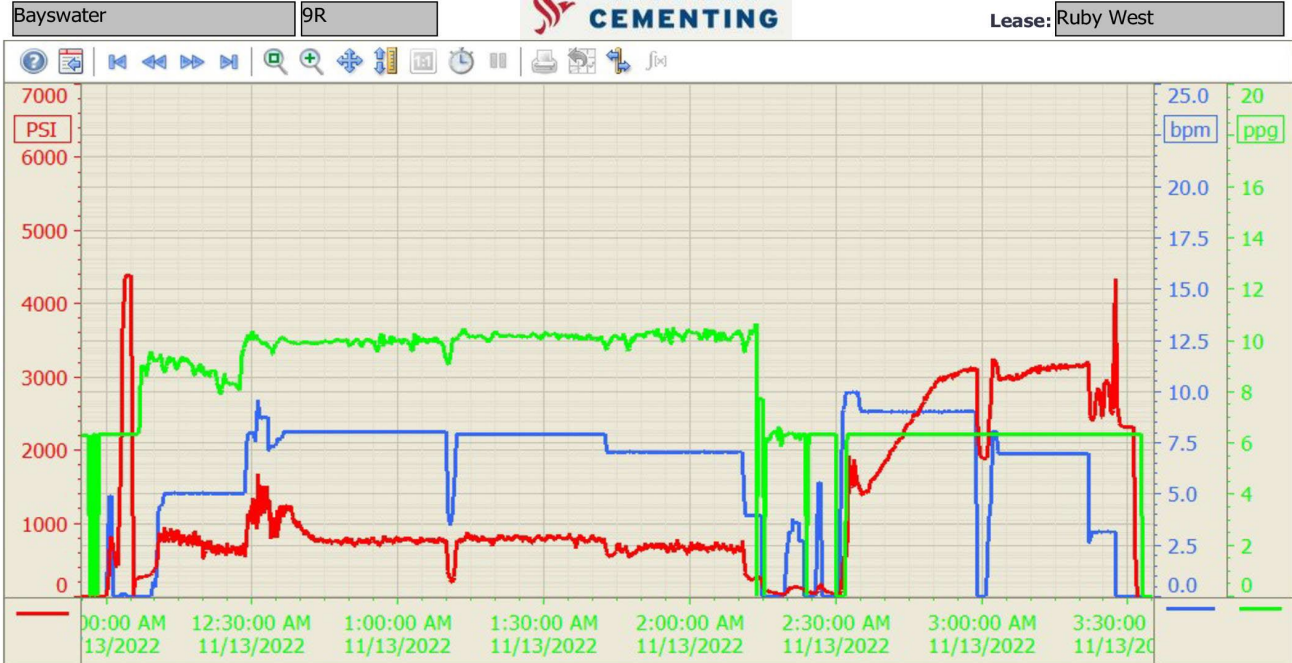
Job Logs

Line	Event	Date (MM/DD/YY)	Time (HH:MM)	Density (lb/gal)	Pump Rate (bpm)	Pump Volume (bbls)	Pipe Pressure (psi)	Comment
1	Callout	11/12/2022	13:00					American Cementing Crew called out for Baywater Ruby West # 9R 5.5 Long String Production. On location time 19:00.
2	Pre Journey Meeting	11/12/2022	15:30					Meeting with cement crew and discussed hazards during travel and route traveling.
3	Crew Leave Yard	11/12/2022	16:00					
4	Arrive On Location	11/12/2022	17:00					Meeting with PIC on location and discussed job procedures and cmt volumes.
5	Pre Rig Up Meeting	11/12/2022	17:30					Meeting with cement crew and discussed hazards during rig up.
6	Rig Up Equipment	11/12/2022	17:45					No injuries or equipment damage reported.
7	Wait On Rig	11/12/2022	19:00					Waiting on rig to land casing and circulate well before cement job.
8	Pre Job Meeting	11/12/2022	23:00					Meeting with rig and cement crew and discussed job procedures and hazards during pumping.
9	Fill Lines	11/12/2022	23:45	8.3	5	5	600	Pumped 5 bbls of fresh water to fill lines and establish circulation.
10	Pressure Test Lines	11/12/2022	23:48					Pressure test lines to 5000 psi. Test good and set pressure kickouts at 2500 for cement job.
11	Pump Spacer 1	11/12/2022	23:55	12	5	40	1000	Mixed and pumped 40 bbls of EZ Spacer @ 12 ppg.
12	Pump Spacer 2	11/12/2022	23:59	11.5	5	20	900	Mixed and pumped 20 bbls of EZ Spacer @ 11.5 ppg.
13	Pump Spacer 3	11/13/2022	00:10	11	5	20	900	Mixed and pumped 20 bbls of EZ Spacer @ 11 ppg.
14	Pump Lead CMT	11/13/2022	00:13	13.2	8	335	1200	Mixed and pumped 1050 sks of lead cmt @ 13.2 ppg, 1.79 yld, 9.2 gal/sk.
15	Pump Tail CMT	11/13/2022	00:00	13.5	8	445	1000	Mixed and pumped 1665 sks of tail cmt @ 13.5 ppg, 1.50 yld, 7.6 gal/sk.
16	Shutdown	11/13/2022	00:00				0	Shutdown to aline valves to wash pumps and lines to pit and load plug into plug container.
17	Wash Pumps And Lines	11/13/2022	00:00	8.3				Clean pumps and lines. Plug loaded in plug container.
18	Drop Plug	11/13/2022	00:00					1st plug dropped. Set pressure kickouts at 4500 psi for displacement.
19	Pump Displacement	11/13/2022	00:00	8.3	5	5	200	Pumped 5 bbls of water with SR-61L and shutdown to drop 2nd plug.
20	Shutdown	11/13/2022	00:00				0	Loaded 2nd plug.
21	Drop Plug	11/13/2022	00:00					2nd plug dropped.
22	Pump Displacement	11/13/2022	00:00	8.3	9	375	3500	Pumped 5 bbls of displacement with SR-61L and finished displacement with biocide, corrosion inhibitor, oxygen scavenger, and rescare.
23	Slow Rate	11/13/2022	00:00	8.3	3	10	2900	Slowed rate 380 bbls to 3 bpm to bump plugs. FCP 2900 psi.
24	Bump Plug	11/13/2022	00:00				3500	1st plug landed @ 390 bbls of displacement burst @ 3500 psi.
25	Pump Displacement	11/13/2022	00:00	8.3	3	5	2900	Pumped 5 bbls to burst 2nd plug. FCP 2900 psi

26	Bump Plug	11/13/2022	00:00				4500	2nd plug landed @ 395 bbls of displacement burst @ 4500 psi.
27	Shutdown	11/13/2022	00:00				2900	Shutdown psi @ 2900 psi
28	Check Floats	11/13/2022	00:00				0	3 bbls back and floats held.
29	End Job	11/13/2022	00:00					80 bbls of spacer and 56 bbls of cmt to surface.
30	Pre Rig Down Meeting	11/13/2022	00:00					Meeting with cement crew and discussed hazards during rig down.
31	Rig Down Equipment	11/13/2022	00:00					Washed up rig stack and equipment. No injuries or equipment damage reported.
32	Pre Journey Meeting	11/13/2022	00:00					Meeting with cement crew and discussed hazards and route traveled.
33	Crew Leave Location	11/13/2022	00:00					Thankyou for using American Cementing.

Pump Diagrams

Summary Trend



11/13/2022 5:26:00 A