

# Wellhead Closure Checklist

## COGCC Rule 911.a.(4) Environmental Site Closure Assessment Field Form

|   |                                     |   |                  |                                     |
|---|-------------------------------------|---|------------------|-------------------------------------|
| Additional attachments (optional):  | Pit Closure                         | Tank Battery Closure  | Flowline Closure | Partially Buried Vault Closure      |
| Site Name & COGCC Facility Number: <b>BAKER STATE B #25-11</b>  |                                     | Date: <b>8-30-22</b>  |                  | Remediation Project #: <b>20766</b> |
| Associated Wells: <b>05-123-17429</b>   |                                     | Age of Site: <b>YEARS</b>                                       |                  | Number of Photos Attached: <b>1</b> |
| Location: (GPS coordinates of wellhead or southeastern most wellhead for multiple) <b>40.354139, -104.500500</b>  |                                     |   |                  | Estimated Facility Size (acres):    |
| General Condition of Site: (General observations regarding housekeeping, corrosion, waste management, etc.)<br><b>GOOD</b>  |                                     |   |                  |                                     |
| USCS Soil Type: <b>SW</b>   |                                     | Estimated Depth to Groundwater: <b>&gt; 20'</b>                 |                  |                                     |
| Hydrocarbon Impacted Soils / Spills: (Note estimated size and if impact appears to be surficial or extends to an unknown depth)<br><b>NONE OBSERVED</b>   |                                     |   |                  |                                     |
| Salt Crusted Soils or Impacted Vegetation: (Note estimated size and if impact appears to be surficial or extends to an unknown depth)<br><b>NONE OBSERVED</b>                                   |                                     |   |                  |                                     |
| <b>Wellhead(s)</b>  |                                     |   |                  |                                     |
| Well API  | <b>05-123-17429</b>                 |   |                  |                                     |
| Age   | <b>YEARS</b>                        |   |                  |                                     |
| Condition of surface around wellhead  | <b>GOOD - PER CREW</b>              |   |                  |                                     |
| PID Readings  | <b>N/A - EXCAVATED UPON ARRIVAL</b> |   |                  |                                     |
| Condition of subsurface (containment present)   | <b>GOOD</b>                         |   |                  |                                     |
| PID Readings  | <b>1.5</b>                          | <b>1.1</b>  | <b>1.2</b>       | <b>2.3</b>                          |
| Sample taken? Location/Sample ID  | <b>WH-SS-01</b>                     | <b>WH-SS-02</b>   | <b>WH-SS-03</b>  | <b>WH-SS-04</b>                     |
| Photo Number(s)   | <b>SEE PHOTOLOG</b>                 |   |                  |                                     |
| Other observations regarding wellheads:<br><b>WELL CASING CUT/CAPPED FOLLOWING ASSESSMENT.</b>  |                                     |   |                  |                                     |
| <b>Summary</b>  |                                     |   |                  |                                     |
| Was impacted soil identified?<br><b>(No)</b> Yes - less than 10 cubic yards      Yes - more than 10 cubic yards   |                                     |   |                  |                                     |
| Total number of samples field screened: <b>5</b>  |                                     | Total number of samples collected: <b>5</b>                     |                  |                                     |
| Highest PID Reading: <b>2.4</b>   |                                     | Total number of samples submitted to lab for analysis: <b>1</b> |                  |                                     |
| If more than 10 cubic yards of impacted soil were observed:   |                                     |   |                  |                                     |
| Vertical extent: <b>N/A</b>   |                                     | Estimated spill volume:   |                  |                                     |
| Lateral extent:   |                                     | Volume of soil removed:   |                  |                                     |
| Is additional investigation required?   |                                     |   |                  |                                     |
| Was groundwater encountered during the investigation?<br><b>(No)</b> Yes - not impacted or in contact with impacted soils      Yes - groundwater impacted and/or in contact with impacted soils |                                     |   |                  |                                     |
| Measured depth to groundwater:  |                                     | Was remedial groundwater removal conducted?      Yes      No    |                  |                                     |
| Date Groundwater was encountered:   |                                     | Commencement date of removal:                                   |                  |                                     |
| Sheen on groundwater?      Yes      No  |                                     | Volume of groundwater removed prior to sampling:                |                  |                                     |
| Free product observed?      Yes      No   |                                     | Volume of groundwater removed post sampling:                    |                  |                                     |
| Total number of samples collected:  |                                     | Total Volume of groundwater removed:                            |                  |                                     |
| Total number of samples submitted to lab for analysis:  |                                     |   |                  |                                     |



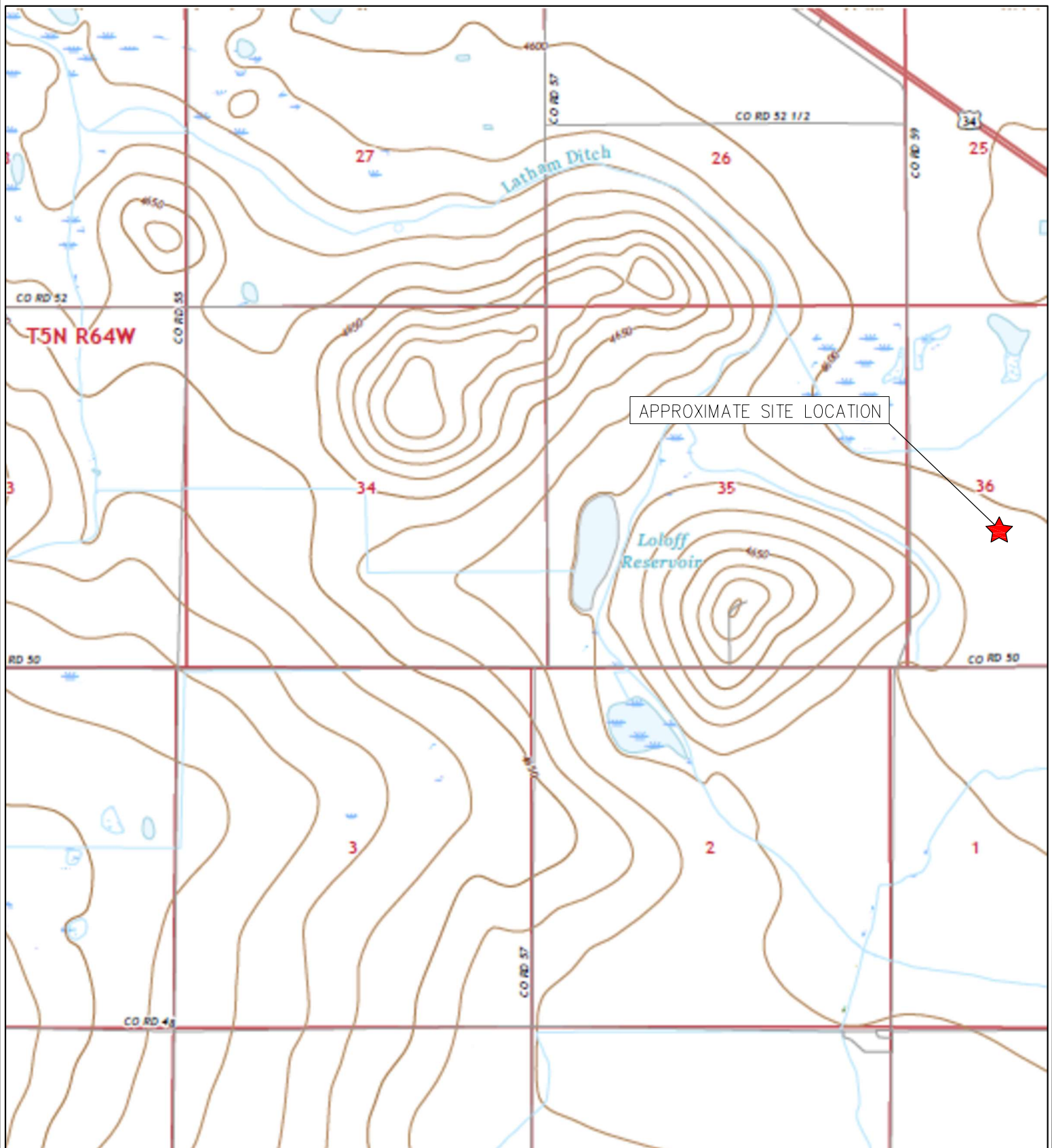
## **FIGURES**

**Figure 1: Topographic Site Location Map**

**Figure 2: Aerial Site Location Map**

**Figure 3: Soil Analytical Map**

**Figure 4: Polycyclic Aromatic Hydrocarbons Map**



TOPOGRAPHIC SITE LOCATION MAP  
 BAKER STATE B #36-11  
 CLOSURE ASSESSMENT  
 40.354130 / -104.500500  
 NE¼ SW¼ SEC.36 T5N R64W 6PM  
 WELD COUNTY, COLORADO  
 API # 05-123-17429  
 REMEDIATION # 20766



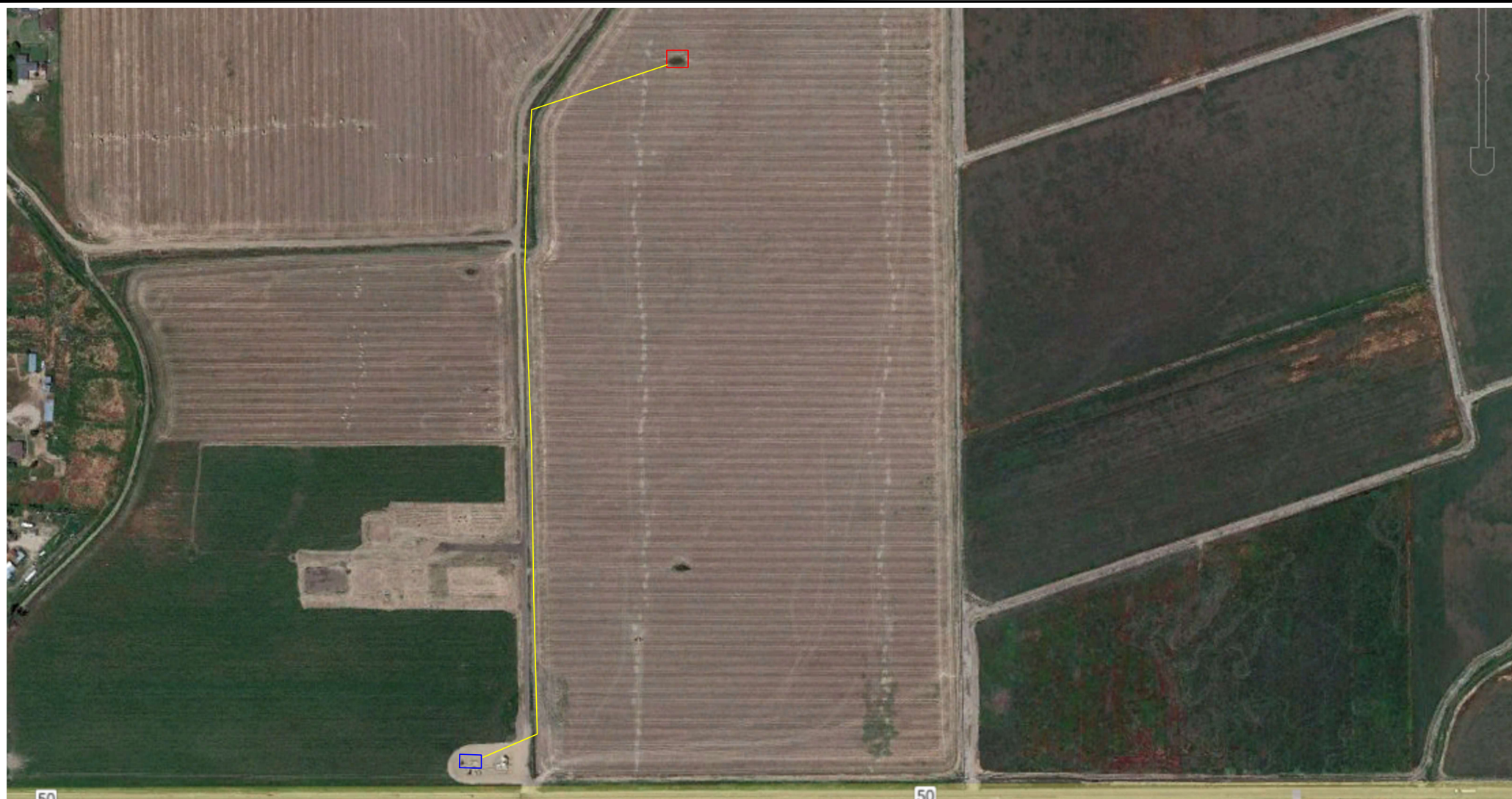
**EAGLE**  
 ENVIRONMENTAL  
 CONSULTING, INC.

8000 W 44th Ave, Wheat Ridge, CO 80033  
 Ph: 303-433-0479 • F: 303-325-5449

SOURCE: USGS 7.5 MINUTE TOPOGRAPHIC MAP,  
 VALLEY VIEW SCHOOL, CO QUADRANGLE 2022

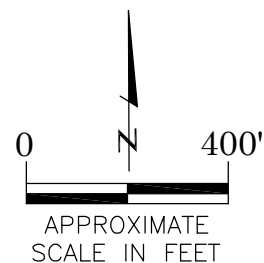
FIGURE 1





# LEGEND

- FORMER BAKER STATE B #36-11 WELLHEAD (PLUGGED AND ABANDONED)
- ASSOCIATED SEPARATOR
- APPROXIMATE FLOWLINE LOCATION



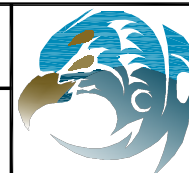
AERIAL SITE LOCATION MAP  
 BAKER STATE B #36-11  
 CLOSURE ASSESSMENT  
 40.354130 / -104.500500  
 NE¼ SW¼ SEC.36 T5N R64W 6PM  
 WELD COUNTY, COLORADO  
 API # 05-123-17429  
 REMEDIATION # 20766

DRAWN BY:

CT

FIG. NO.

2



**EAGLE**  
 ENVIRONMENTAL  
 CONSULTING, INC.  
 8000 W 44th Ave, Wheat Ridge, CO 80033  
 Ph: 303-433-0479 • F: 303-325-5449





WH-FS-01@6'  
08/30/22  
6'  
B = <0.00200  
T = <0.00200  
E = <0.00200  
X = <0.00200  
G = <0.200  
D = <25.0  
R = <100  
1,2,4-TMB = <0.00200  
1,3,5-TMB = <0.00200  
Brn= 0.496  
EC = 1.19  
SAR= 2.11  
pH = 7.91

#### LEGEND

- WELLHEAD ASSESSMENT BOUNDARIES
- SS-02 APPROXIMATE LOCATION OF SOIL SAMPLES FIELD SCREENED, ONLY, WITH PHOTOIONIZATION DETECTOR
- SS-02 APPROXIMATE LOCATION OF SOIL SAMPLES SUBMITTED FOR LABORATORY ANALYSIS

#### PARAMETERS

SAMPLE LOCATION  
DATE  
DEPTH (FEET)  
B = BENZENE (mg/kg)  
T = TOLUENE (mg/kg)  
E = ETHYLBENZENE (mg/kg)  
X = TOTAL XYLENES (mg/kg)  
G = TPH-GRO (mg/kg)  
D = TPH-DRO (mg/kg)  
R = TPH-RRO (mg/kg)  
1,2,4-TMB = 1,2,4 TRIMETHYLBENZENE (mg/kg)  
1,3,5-TMB = 1,3,5 TRIMETHYLBENZENE (mg/kg)  
Brn= BORON (mg/L)  
EC = SPECIFIC CONDUCTANCE (mmhos/cm)  
SAR= SODIUM ADSORPTION RATIO  
pH = pH (pH UNITS)

mg/kg = MILLIGRAMS PER KILOGRAM  
mg/L = MILLIGRAMS PER LITER  
mmhos/cm = MILLIMHOS PER CENTIMETER

TPH-GRO = TOTAL PETROLEUM HYDROCARBONS - GASOLINE RANGE ORGANICS  
TPH-DRO = TOTAL PETROLEUM HYDROCARBONS - DIESEL RANGE ORGANICS  
TPH-RRO = TOTAL PETROLEUM HYDROCARBONS - RESIDUAL RANGE ORGANICS

NOTES:  
VALUES PRESENTED WITH A LESS THAN SYMBOL (<) DID NOT CONTAIN CONCENTRATIONS AT OR ABOVE LABORATORY DETECTION LIMITS.

VALUES PRESENTED IN **BOLD** EXCEED COGCC TABLE 915-1 REGULATORY LIMITS.

COGCC = COLORADO OIL AND GAS CONSERVATION COMMISSION

SOIL ANALYTICAL MAP  
BAKER STATE B #36-11  
CLOSURE ASSESSMENT  
40.354130 / -104.500500  
NE¼ SW¼ SEC.36 T5N R64W 6PM  
WELD COUNTY, COLORADO  
API # 05-123-17429  
REMEDIAL # 20766

DRAWN BY:  
CT

FIG.  
NO. 3



**EAGLE**  
ENVIRONMENTAL  
CONSULTING, INC.  
8000 W 44th Ave, Wheat Ridge, CO 80033  
Ph: 303-433-0479 • F: 303-325-5449





LEGEND

- WELLHEAD ASSESSMENT BOUNDARIES
- SS-02 APPROXIMATE LOCATION OF SOIL SAMPLES FIELD SCREENED, ONLY, WITH PHOTOIONIZATION DETECTOR
- SS-02 APPROXIMATE LOCATION OF SOIL SAMPLES SUBMITTED FOR LABORATORY ANALYSIS

PARAMETERS

SAMPLE LOCATION  
DATE SAMPLE COLLECTED  
APPROXIMATE DEPTH  
POLYCYCLIC AROMATIC HYDROCARBONS (PAHs) (mg/kg)

mg/kg = MILLIGRAMS PER KILOGRAM

ND = NON-DETECT

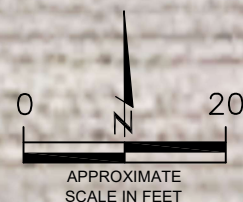
NOTE:

VALUES PRESENTED WITH A LESS THAN SYMBOL (<) DID NOT CONTAIN CONCENTRATIONS AT OR ABOVE LABORATORY DETECTION LIMITS.

VALUES PRESENTED IN **BOLD** EXCEED COGCC TABLE 915-1 REGULATORY LIMITS.

COGCC = COLORADO OIL AND GAS CONSERVATION COMMISSION

WH-FS-01@6'  
08/30/22  
6'  
ND = <0.00067  
1-Methylnaphthalene = 0.000403  
2-Methylnaphthalene = ND  
Acenaphthene = ND  
Anthracene = ND  
Benzo(a)anthracene = ND  
Benzo(a)pyrene = 0.00119  
Benzo(b)fluoranthene = 0.00115  
Benzo(k)fluoranthene = 0.000524  
Chrysene = 0.00147  
Dibenzo(a,h)anthracene = ND  
Fluoranthene = 0.000832  
Fluorene = ND  
Indeno(1,2,3-CD)pyrene = 0.000847  
Naphthalene = ND  
Pyrene = 0.00109



POLYCYCLIC AROMATIC HYDROCARBONS MAP  
BAKER STATE B #36-11  
CLOSURE ASSESSMENT  
40.354130 / -104.500500  
NE¼ SW¼ SEC.36 T5N R64W 6PM  
WELD COUNTY, COLORADO  
API # 05-123-17429  
REMEDIATION # 20766

DRAWN BY:  
CT

FIG.  
NO. 4



**EAGLE**  
ENVIRONMENTAL  
CONSULTING, INC.  
8000 W 44th Ave, Wheat Ridge, CO 80033  
Ph: 303-433-0479 • F: 303-325-5449



## **TABLES**

**Table 1: Photoionization Detector Reading Summary**

**Table 2: Soil Analytical Results Summary**

**Table 3: Polycyclic Aromatic Hydrocarbons Analytical Results Summary**

**TABLE 1**  
**PHOTOIONIZATION DETECTOR READING SUMMARY**  
**BAKER STATE B #36-11**  
**CLOSURE ASSESSMENT**  
**40.354130 / -104.500500**  
**NE 1/4 SW 1/4 SEC.36 T5N R64W 6PM**  
**WELD COUNTY, COLORADO**  
**API # 05-123-17429**  
**REMEDATION # 20766**

| Sample Location<br>(Latitude/Longitude)  | Date     | Approximate<br>Depth<br>(feet) | PID Reading<br>(ppm-v) | Lab Submission<br>(Y/N) |
|--|----------|--------------------------------|------------------------|-------------------------|
| WH-SS-01 @ 5'<br>(40.354162 / -104.500520)   | 08/30/22 | 5                              | 1.5                    | N                       |
| WH-SS-02 @ 5'<br>(40.354144 / -104.500496)   | 08/30/22 | 5                              | 1.1                    | N                       |
| WH-SS-03 @ 5'<br>(40.354124 / -104.500517)   | 08/30/22 | 5                              | 1.2                    | N                       |
| WH-SS-04 @ 5'<br>(40.354144 / -104.500541)   | 08/30/22 | 5                              | 2.3                    | N                       |
| WH-FS-01 @ 6'<br>(40.354147 / -104.500520)   | 08/30/22 | 6                              | 2.4                    | Y                       |
| (Y/N) = Yes or No<br>ppm-v = parts per million by volume<br>PID = Photoionization Detector |          |                                |                        |                         |



TABLE 2  
SOIL ANALYTICAL RESULTS SUMMARY  
BAKER STATE B #36-11  
CLOSURE ASSESSMENT  
40.354130 / -104.500500  
NE 1/4 SW 1/4 SEC.36 T5N R64W 6PM  
WELD COUNTY, COLORADO  
API # 05-123-17429  
REMEDATION # 20766

| Sample Location<br>(Latitude/Longitude)   | Date     | Approximate<br>Depth<br>(feet) | PID Reading<br>(ppm-v) | Benzene<br>(mg/kg) | Toluene<br>(mg/kg) | Ethylbenzene<br>(mg/kg) | Total<br>Xylenes<br>(mg/kg) | TPH-GRO<br>(mg/kg) | TPH-DRO<br>(mg/kg) | TPH-RRO<br>(mg/kg) | 1,2,4-TMB<br>(mg/kg) | 1,3,5-TMB<br>(mg/kg) | Boron<br>(mg/L) | Specific<br>Conductance<br>(mmhos/cm) | pH<br>(pH units) | SAR          |
|---|----------|--------------------------------|------------------------|--------------------|--------------------|-------------------------|-----------------------------|--------------------|--------------------|--------------------|----------------------|----------------------|-----------------|---------------------------------------|------------------|--------------|
| <b>COGCC Table 915-1 Residential Screening Levels (mg/kg)</b>   |          |                                |                        | <b>1.20</b>        | <b>490</b>         | <b>5.8</b>              | <b>58</b>                   | <b>500</b>         |                    |                    | <b>30</b>            | <b>27</b>            | <b>2</b>        | <b>&lt;4</b>                          | <b>6-8.3</b>     | <b>&lt;6</b> |
| <b>COGCC Table 915-1 Protection of Groundwater Soil Screening Levels</b>  |          |                                |                        | <b>0.0026</b>      | <b>0.69</b>        | <b>0.78</b>             | <b>9.9</b>                  | <b>--</b>          |                    |                    | <b>0.0081</b>        | <b>0.0087</b>        | <b>--</b>       | <b>--</b>                             | <b>--</b>        | <b>--</b>    |
| WH-FS-01 @ 6"<br>(40.354147 / -104.500520)  | 08/30/22 | 6                              | 2.4                    | <0.00200           | <0.00200           | <0.00200                | <0.00200                    | <0.200             | <25.0              | <100               | <0.00200             | <0.00200             | 0.496           | 1.19                                  | 7.91             | 2.11         |
| COGCC = Colorado Oil and Gas Conservation Commission<br>mg/kg = milligrams per kilogram<br>mmhos/cm = millimhos per centimeter<br>PID = Photoionization Detector<br>ppm-v = parts per million by volume<br>mg/L = milligrams per liter<br>SAR = Sodium Adsorption Ratio<br>Note: Values presented with a less than symbol (<) did not contain concentrations at or above the laboratory reporting limit.<br>Note: Values presented in <b>BOLD</b> contained concentrations exceeding COGCC Table 915-1 Regulatory Limits. |          |                                |                        |                    |                    |                         |                             |                    |                    |                    |                      |                      |                 |                                       |                  |              |

TABLE 3  
POLYCYCLIC AROMATIC HYDROCARBONS ANALYTICAL RESULTS SUMMARY  
BAKER STATE B #36-11  
CLOSURE ASSESSMENT  
40.354130 / -104.500500  
NE 1/4 SW 1/4 SEC.36 T5N R64W 6PM  
WELD COUNTY, COLORADO  
API # 05-123-17429  
REMEDIATION # 20766

| Sample Location<br>(Latitude/Longitude)  | Date     | Approximate<br>Depth<br>(feet) | PID Reading (ppm-<br>v) | 1-Methyl-<br>naphthalene (mg/kg) | 2-Methyl-naphthalene<br>(mg/kg) | Acenaphthene<br>(mg/kg) | Anthracene<br>(mg/kg) | Benzo(a)-anthracene<br>(mg/kg) | Benzo(a)-<br>pyrene (mg/kg) | Benzo(b)-<br>fluoranthene<br>(mg/kg) | Benzo(k)-<br>fluoranthene (mg/kg) | Chrysene<br>(mg/kg) | Dibenzo(a,h)-<br>anthracene<br>(mg/kg) | Fluoranthene<br>(mg/kg) | Fluorene<br>(mg/kg) | Indeno(1,2,3-<br>cd)-pyrene<br>(mg/kg) | Naphthalene<br>(mg/kg) | Pyrene<br>(mg/kg) |
|--|----------|--------------------------------|-------------------------|----------------------------------|---------------------------------|-------------------------|-----------------------|--------------------------------|-----------------------------|--------------------------------------|-----------------------------------|---------------------|--|-------------------------|---------------------|--|------------------------|-------------------|
| <b>COGCC Table 915-1 Residential Screening Levels</b>  |          |                                |                         | 18                               | 24                              | 360                     | 1,800                 | 1.1                            | 0.11                        | 1.1                                  | 11                                | 110                 | 0.11                                   | 240                     | 240                 | 1.1                                    | 2                      | 180               |
| <b>COGCC Table 915-1 Protection of Groundwater Soil Screening Levels</b>   |          |                                |                         | 0.006                            | 0.019                           | 0.55                    | 5.8                   | 0.011                          | 0.24                        | 0.3                                  | 2.9                               | 9                   | 0.096                                  | 8.9                     | 0.54                | 0.98                                   | 0.0038                 | 1.3               |
| WH-FS-01 @ 6"<br>(40.354147 / -104.500520)   | 08/30/22 | 6                              | 2.4                     | 0.000403                         | <0.00067                        | <0.00067                | <0.00067              | <0.00067                       | 0.00119                     | 0.00115                              | 0.000524                          | 0.00147             | <0.00067                               | 0.000832                | <0.00067            | 0.000847                               | <0.00067               | 0.00109           |
| COGCC = Colorado Oil and Gas Conservation Commission<br>mg/kg = milligrams per kilogram<br>ppm-v = parts per million by volume<br>Note: Values presented with a less than symbol (<) did not contain concentrations at or above the laboratory reporting limit.<br>Note: Values presented in <b>BOLD</b> contained concentrations exceeding COGCC Table 915-1 Regulatory Limits. |          |                                |                         |                                  |                                 |                         |                       |                                |                             |                                      |                                   |                     |  |                         |                     |  |                        |                   |



## **ATTACHMENT A**

### **Photo Log**



# Baker State B #36-11

## API # 05-123-17429

## Remediation # 20766

Closure Assessment

August 2022

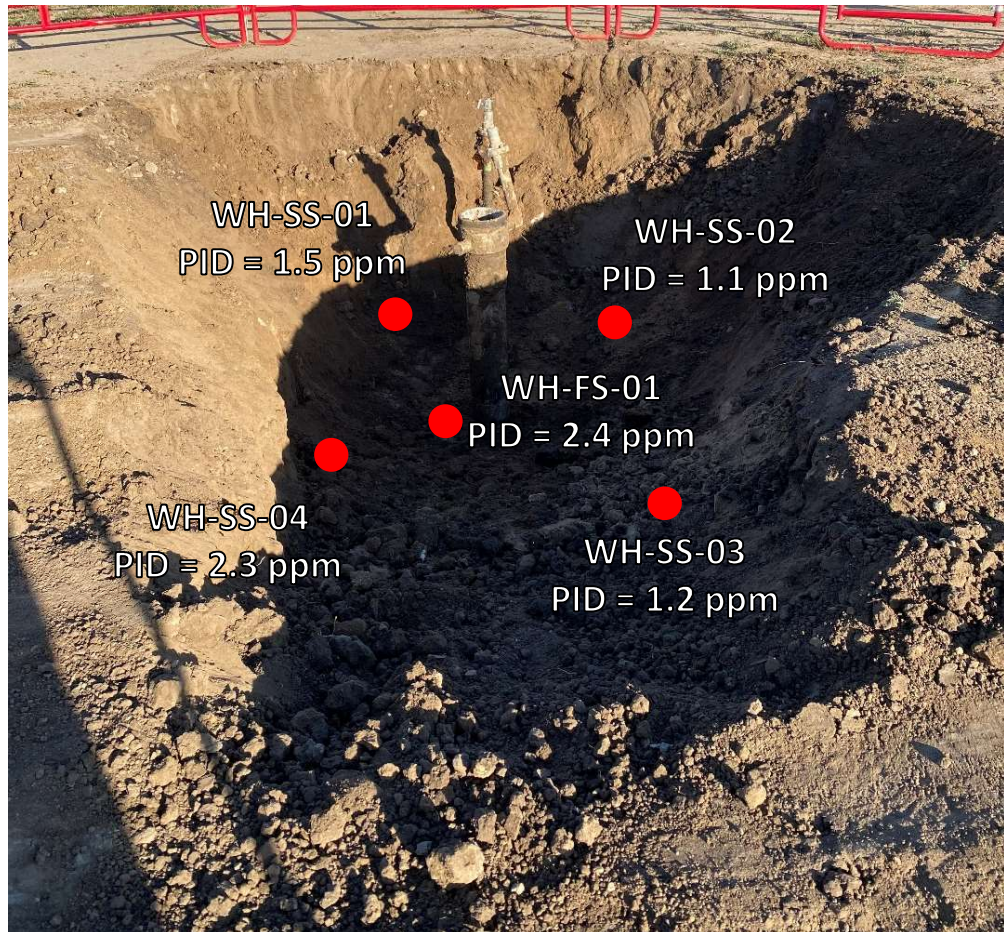


**EAGLE**  
ENVIRONMENTAL  
CONSULTING, INC.

8000 W 44th Ave, Wheat Ridge, CO 80033  
Ph: 303-433-0479 • F: 303-325-5449



## Wellhead Excavation – 08/30/22



Looking northeast  
No petroleum hydrocarbon staining or odor observed



## **ATTACHMENT B**

### **Laboratory Analytical Report**





September 19, 2022

Eagle Environmental Consulting, Inc.

Martin C Eckert III

8000 W 44th Ave

Wheat Ridge CO 80033

Project Name - Noble - Baker State B #36-11

Project Number - [none]

Attached are your analytical results for Noble - Baker State B #36-11 received by Origins Laboratory, Inc. August 30, 2022. This project is associated with Origins project number Y208697-01.

The analytical results in the following report were analyzed under the guidelines of EPA Methods. These methods are identified as follows; "SW" are defined in SW-846, "EPA" are defined in 40CFR part 136 and "SM" are defined in the most current revision of Standard Methods For the Examination of Water and Wastewater.

The analytical results apply specifically to the samples and analyses specified per the attached Chain of Custody. As such, this report shall not be reproduced except in full, without the written approval of Origin's laboratory.

Unless otherwise noted, the analytical results for all soil samples are reported on a wet weight basis. All analytical analyses were performed under NELAP guidelines unless noted by a data qualifier.

Any holding time exceedances, deviations from the method specifications or deviations from Origins Laboratory's Standard Operating Procedures are outlined in the case narrative.

Thank you for selecting Origins for your analytical needs. Please contact us with any questions concerning this report, or if we can help with anything at all.

Origins Laboratory, Inc.  
303.433.1322  
o-squad@oelabinc.com



1725 Elk Place, Denver, CO 80211 | Phone: 303.433.1322 | Fax: 303.265.9645

Eagle Environmental Consulting, Inc.

8000 W 44th Ave

Wheat Ridge CO 80033

Martin C Eckert III

Project Number: [none]

Project: Noble - Baker State B #36-11

### CROSS REFERENCE REPORT

| Sample ID   | Laboratory ID | Matrix | Date Sampled         | Date Received    |
|-------------|---------------|--------|----------------------|------------------|
| WH-FS-01@6' | Y208697-01    | Soil   | August 30, 2022 8:03 | 08/30/2022 10:30 |

Origins Laboratory, Inc.



*The results in this report apply to the samples analyzed in accordance with the chain of custody document. This analytical report must be reproduced in its entirety.*





Eagle Environmental Consulting, Inc.  
8000 W 44th Ave  
Wheat Ridge CO 80033

Martin C Eckert III  
Project Number: [none]  
Project: Noble - Baker State B #36-11

Origins Laboratory

F-012207-01-R1  
Effective Date: 01/09/12

**Sample Receipt Checklist**

Origins Work Order: Y208697 Client: Eagle  
Client Project ID: Baker State B#

Checklist Completed by: MP Shipped Via: TD  
Date/time completed: 8/30/22 (UPS, FedEx, Hand Delivered, Pick-up, etc.)  
Airbill #: N/A

Matrix(s) Received: (Check all that apply): 7 Soil/Solid 1 Water 1 Other: 1  
Cooler Number/Temperature: 1 9.1 °C 1 °C 1 °C (Describe) °C  
Thermometer ID: T004

| Requirement Description   | Yes      | No       | N/A      | Comments (if any) |
|---|----------|----------|----------|-------------------|
| If samples require cooling, was the temperature between 0°C to ≤ 6°C <sup>(1)</sup> ?   | <u>g</u> |          |          |                   |
| Is there ice present (document if blue ice is used)   | <u>g</u> |          |          |                   |
| Are custody seals present on cooler? (if so, document in comments if they are signed and dated, broken or intact)   |          | <u>1</u> |          |                   |
| Are custody seals present on each sample container? (if so, document in comments if they are signed and dated, broken or intact)  |          | <u>g</u> |          |                   |
| Were all samples received intact <sup>(1)</sup> ?   | <u>g</u> |          |          |                   |
| Was adequate sample volume provided <sup>(1)</sup> ?  | <u>g</u> |          |          |                   |
| Are short holding time analytes or samples with HTs due within 48 hours present <sup>(1)</sup> ?  |          | <u>x</u> |          |                   |
| Is a chain-of-custody (COC) present and filled out completely <sup>(1)</sup> ?  | <u>g</u> |          |          |                   |
| Does the COC agree with the number and type of sample bottles received <sup>(1)</sup> ?   | <u>g</u> |          |          |                   |
| Do the sample IDs on the bottle labels match the COC <sup>(1)</sup> ?   | <u>g</u> |          |          |                   |
| Is the COC properly relinquished by the client with date and time recorded <sup>(1)</sup> ?   | <u>g</u> |          |          |                   |
| For volatiles in water — is there headspace (> 1/4 inch bubble) present? If yes, contact client and note in narrative.  |          |          | <u>g</u> |                   |
| Are samples preserved that require preservation and was it checked <sup>(1)</sup> ? (note ID of confirmation instrument used in comments) / (preservation is not confirmed for subcontracted analyses in order to insure sample integrity) / (pH < 2 for samples preserved with HNO <sub>3</sub> , HCL, H <sub>2</sub> SO <sub>4</sub> ) / (pH > 10 for samples preserved with NaAsO <sub>2</sub> +NaOH, ZnAc+NaOH) |          |          | <u>g</u> |                   |
| Additional Comments (if any):   |          |          |          |                   |

<sup>(1)</sup>If NO, then contact the client before proceeding with analysis and note date/time and person contacted as well as the corrective action to in the additional comments (above) and the case narrative.

Reviewed by (Project Manager): MP Date/Time Reviewed: 8/31/22

Origins Laboratory, Inc.

*J. Bynon*

The results in this report apply to the samples analyzed in accordance with the chain of custody document. This analytical report must be reproduced in its entirety.

Eagle Environmental Consulting, Inc.  
8000 W 44th Ave  
Wheat Ridge CO 80033

Martin C Eckert III  
Project Number: [none]  
Project: Noble - Baker State B #36-11

WH-FS-01@6'

8/30/2022 8:03:00AM

| Analyte | Result | Min Detection Limit | Reporting Limit | Units | Dilution | Batch | Prepared | Analyzed | Notes |
|---------|--------|---------------------|-----------------|-------|----------|-------|----------|----------|-------|
|---------|--------|---------------------|-----------------|-------|----------|-------|----------|----------|-------|

Origins Laboratory, Inc.  
Y208697-01 (Soil)

## Boron (DTPA Sorbitol)

|       |       |        |      |   |         |            |            |  |
|-------|-------|--------|------|---|---------|------------|------------|--|
| Boron | 0.496 | 0.0999 | mg/L | 1 | B2H3105 | 08/31/2022 | 09/01/2022 |  |
|-------|-------|--------|------|---|---------|------------|------------|--|

## DRO/ORO by EPA 8015D

|                                   |    |      |       |   |         |            |            |      |
|-----------------------------------|----|------|-------|---|---------|------------|------------|------|
| Diesel (C10-C28)                  | ND | 25.0 | mg/kg | 1 | B2H3015 | 08/30/2022 | 09/14/2022 | B, U |
| Residual Range Organics (C28-C40) | ND | 100  | "     | " | "       | "          | "          | U    |

|                        |        |        |  |  |   |   |   |  |
|------------------------|--------|--------|--|--|---|---|---|--|
| Surrogate: o-Terphenyl | 81.1 % | 50-150 |  |  | " | " | " |  |
|------------------------|--------|--------|--|--|---|---|---|--|

## GBTEX+TMBs by 8260D

|                             |    |         |       |   |         |            |            |   |
|-----------------------------|----|---------|-------|---|---------|------------|------------|---|
| 1,2,4-Trimethylbenzene      | ND | 0.00200 | mg/kg | 1 | B2H3123 | 08/31/2022 | 09/05/2022 | U |
| 1,3,5-Trimethylbenzene      | ND | 0.00200 | "     | " | "       | "          | "          | U |
| Benzene                     | ND | 0.00200 | "     | " | "       | "          | "          | U |
| Ethylbenzene                | ND | 0.00200 | "     | " | "       | "          | "          | U |
| Toluene                     | ND | 0.00200 | "     | " | "       | "          | "          | U |
| Xylenes, total              | ND | 0.00200 | "     | " | "       | "          | "          | U |
| Gasoline Range Hydrocarbons | ND | 0.200   | "     | " | "       | "          | "          | U |

|                                  |        |        |  |  |   |   |   |  |
|----------------------------------|--------|--------|--|--|---|---|---|--|
| Surrogate: 1,2-Dichloroethane-d4 | 98.8 % | 70-130 |  |  | " | " | " |  |
|----------------------------------|--------|--------|--|--|---|---|---|--|

Origins Laboratory, Inc.



The results in this report apply to the samples analyzed in accordance with the chain of custody document. This analytical report must be reproduced in its entirety.

Eagle Environmental Consulting, Inc.  
8000 W 44th Ave  
Wheat Ridge CO 80033

Martin C Eckert III  
Project Number: [none]  
Project: Noble - Baker State B #36-11

WH-FS-01@6'

8/30/2022 8:03:00AM

| Analyte | Result | Min Detection Limit | Reporting Limit | Units | Dilution | Batch | Prepared | Analyzed | Notes |
|---------|--------|---------------------|-----------------|-------|----------|-------|----------|----------|-------|
|---------|--------|---------------------|-----------------|-------|----------|-------|----------|----------|-------|

Origins Laboratory, Inc.  
Y208697-01 (Soil)

## GBTEX+TMBs by 8260D

|                                 |        |        |             |            |            |
|---------------------------------|--------|--------|-------------|------------|------------|
| Surrogate: Toluene-d8           | 95.3 % | 70-130 | B2H31<br>23 | 08/31/2022 | 09/05/2022 |
| Surrogate: 4-Bromofluorobenzene | 93.9 % | 70-130 | "           | "          | "          |

## Metals by Saturated Paste by EPA 6010

|           |      |       |       |    |        |            |            |
|-----------|------|-------|-------|----|--------|------------|------------|
| Calcium   | 4.33 | 0.499 | meq/L | 10 | [CALC] | 08/31/2022 | 09/01/2022 |
| Magnesium | 2.44 | 0.823 | "     | "  | "      | "          | "          |
| Sodium    | 3.88 | 0.435 | "     | "  | "      | "          | "          |

## PAH by 8270D SIM

|                       |          |          |         |       |   |         |            |            |   |
|-----------------------|----------|----------|---------|-------|---|---------|------------|------------|---|
| 1-Methylnaphthalene   | 0.000403 | 0.000364 | 0.00067 | mg/Kg | 1 | L635307 | 09/01/2022 | 09/01/2022 | J |
| 2-Methylnaphthalene   | ND       | 0.000645 | 0.00067 | "     | " | "       | "          | "          |   |
| Acenaphthene          | ND       | 0.000304 | 0.00067 | "     | " | "       | "          | "          |   |
| Anthracene            | ND       | 0.000334 | 0.00067 | "     | " | "       | "          | "          |   |
| Benzo(a)anthracene    | ND       | 0.000493 | 0.00067 | "     | " | "       | "          | "          |   |
| Benzo(a)pyrene        | 0.00119  | 0.000468 | 0.00067 | "     | " | "       | "          | "          |   |
| Benzo(b)fluoranthene  | 0.00115  | 0.000585 | 0.00067 | "     | " | "       | "          | "          |   |
| Benzo(k)fluoranthene  | 0.000524 | 0.000437 | 0.00067 | "     | " | "       | "          | "          | J |
| Chrysene              | 0.00147  | 0.000624 | 0.00067 | "     | " | "       | "          | "          |   |
| Dibenz(a,h)anthracene | ND       | 0.000614 | 0.00067 | "     | " | "       | "          | "          |   |
| Fluoranthene          | 0.000832 | 0.000394 | 0.00067 | "     | " | "       | "          | "          |   |
| Fluorene              | ND       | 0.000286 | 0.00067 | "     | " | "       | "          | "          |   |

Origins Laboratory, Inc.



The results in this report apply to the samples analyzed in accordance with the chain of custody document. This analytical report must be reproduced in its entirety.



Eagle Environmental Consulting, Inc.  
8000 W 44th Ave  
Wheat Ridge CO 80033

Martin C Eckert III  
Project Number: [none]  
Project: Noble - Baker State B #36-11

WH-FS-01@6'

8/30/2022 8:03:00AM

| Analyte | Result | Min Detection Limit | Reporting Limit | Units | Dilution | Batch | Prepared | Analyzed | Notes |
|---------|--------|---------------------|-----------------|-------|----------|-------|----------|----------|-------|
|---------|--------|---------------------|-----------------|-------|----------|-------|----------|----------|-------|

Waypoint Analytical, LLC.  
Y208697-01 (Soil)

## PAH by 8270D SIM

|                        |          |          |         |       |   |         |            |            |  |
|------------------------|----------|----------|---------|-------|---|---------|------------|------------|--|
| Indeno(1,2,3-cd)pyrene | 0.000847 | 0.000627 | 0.00067 | mg/Kg | 1 | L635307 | 09/01/2022 | 09/01/2022 |  |
| Naphthalene            | ND       | 0.000484 | 0.00067 | "     | " | "       | "          | "          |  |
| Pyrene                 | 0.00109  | 0.000643 | 0.00067 | "     | " | "       | "          | "          |  |

|                             |        |  |        |  |  |   |   |   |  |
|-----------------------------|--------|--|--------|--|--|---|---|---|--|
| Surrogate: 2-Fluorobiphenyl | 58.9 % |  | 33-115 |  |  | " | " | " |  |
| Surrogate: 4-Terphenyl-d14  | 61.3 % |  | 33-122 |  |  | " | " | " |  |
| Surrogate: Nitrobenzene-d5  | 60.7 % |  | 29-110 |  |  | " | " | " |  |

## pH in Soil by 9045D

|    |      |  |  |          |   |         |            |            |  |
|----|------|--|--|----------|---|---------|------------|------------|--|
| pH | 7.91 |  |  | pH Units | 1 | B2H3108 | 08/31/2022 | 09/01/2022 |  |
|----|------|--|--|----------|---|---------|------------|------------|--|

## SAR by 20B Saturated Paste

|     |      |  |  |     |   |         |            |            |  |
|-----|------|--|--|-----|---|---------|------------|------------|--|
| SAR | 2.11 |  |  | SAR | 1 | B2H3102 | 08/31/2022 | 09/01/2022 |  |
|-----|------|--|--|-----|---|---------|------------|------------|--|

## Specific Conductance Mod. 9050A

|                           |      |  |         |          |   |         |            |            |  |
|---------------------------|------|--|---------|----------|---|---------|------------|------------|--|
| Specific Conductance (EC) | 1.19 |  | 0.00500 | mmhos/cm | 1 | B2H3108 | 08/31/2022 | 09/01/2022 |  |
|---------------------------|------|--|---------|----------|---|---------|------------|------------|--|

Origins Laboratory, Inc.



The results in this report apply to the samples analyzed in accordance with the chain of custody document. This analytical report must be reproduced in its entirety.

Eagle Environmental Consulting, Inc.  
8000 W 44th Ave  
Wheat Ridge CO 80033

Martin C Eckert III  
Project Number: [none]  
Project: Noble - Baker State B #36-11

**Extractable Petroleum Hydrocarbons by 8015D - Quality Control**  
**Origins Laboratory, Inc.**

| Analyte                           | Result | Reporting Limit | Units | Spike Level | Source Result                             | %REC | %REC Limits | RPD | RPD Limit | Notes |
|-----------------------------------|--------|-----------------|-------|-------------|---|------|-------------|-----|-----------|-------|
| <b>Batch B2H3015 - EPA 3550B</b>  |        |                 |       |             |   |      |             |     |           |       |
| <b>Blank (B2H3015-BLK1)</b>       |        |                 |       |             | Prepared: 08/30/2022 Analyzed: 09/03/2022 |      |             |     |           |       |
| Diesel (C10-C28)                  | 38.9   | 25.0            | mg/kg |             |   |      |             |     |           | B     |
| Residual Range Organics (C28-C40) | ND     | 100             | "     |             |   |      |             |     |           | U     |
| Surrogate: o-Terphenyl            | 29     |                 | "     | 24.9        |   | 117  | 50-150      |     |           |       |

Origins Laboratory, Inc.



*The results in this report apply to the samples analyzed in accordance with the chain of custody document. This analytical report must be reproduced in its entirety.*

Eagle Environmental Consulting, Inc.  
8000 W 44th Ave  
Wheat Ridge CO 80033

Martin C Eckert III  
Project Number: [none]  
Project: Noble - Baker State B #36-11

**Extractable Petroleum Hydrocarbons by 8015D - Quality Control**  
**Origins Laboratory, Inc.**

| Analyte | Result | Reporting Limit | Units | Spike Level | Source Result | %REC | %REC Limits | RPD | RPD Limit | Notes |
|---------|--------|-----------------|-------|-------------|---------------|------|-------------|-----|-----------|-------|
|---------|--------|-----------------|-------|-------------|---------------|------|-------------|-----|-----------|-------|

**Batch B2H3015 - EPA 3550B**

**LCS (B2H3015-BS1)**

Prepared: 08/30/2022 Analyzed: 09/03/2022

|                                   |     |      |       |      |  |     |        |  |  |  |
|-----------------------------------|-----|------|-------|------|--|-----|--------|--|--|--|
| Diesel (C10-C28)                  | 513 | 25.0 | mg/kg | 500  |  | 103 | 70-130 |  |  |  |
| Residual Range Organics (C28-C40) | 525 | 100  | "     | 500  |  | 105 | 70-130 |  |  |  |
| Surrogate: o-Terphenyl            | 32  |      | "     | 24.9 |  | 129 | 50-150 |  |  |  |

Origins Laboratory, Inc.



*The results in this report apply to the samples analyzed in accordance with the chain of custody document. This analytical report must be reproduced in its entirety.*

Eagle Environmental Consulting, Inc.  
8000 W 44th Ave  
Wheat Ridge CO 80033

Martin C Eckert III  
Project Number: [none]  
Project: Noble - Baker State B #36-11

**Extractable Petroleum Hydrocarbons by 8015D - Quality Control**  
**Origins Laboratory, Inc.**

| Analyte | Result | Reporting Limit | Units | Spike Level | Source Result | %REC | %REC Limits | RPD | RPD Limit | Notes |
|---------|--------|-----------------|-------|-------------|---------------|------|-------------|-----|-----------|-------|
|---------|--------|-----------------|-------|-------------|---------------|------|-------------|-----|-----------|-------|

**Batch B2H3015 - EPA 3550B**

| Matrix Spike (B2H3015-MS1)        |     | Source: Y208663-01 |       |      | Prepared: 08/30/2022 Analyzed: 09/03/2022 |      |        |  |  |  |
|-----------------------------------|-----|--------------------|-------|------|---|------|--------|--|--|--|
| Diesel (C10-C28)                  | 606 | 25.0               | mg/kg | 500  | 88.2                                      | 104  | 70-130 |  |  |  |
| Residual Range Organics (C28-C40) | 427 | 100                | "     | 500  | 50.9                                      | 75.2 | 70-130 |  |  |  |
| Surrogate: o-Terphenyl            | 24  |                    | "     | 24.9 |   | 97.3 | 50-150 |  |  |  |

Origins Laboratory, Inc.



*The results in this report apply to the samples analyzed in accordance with the chain of custody document. This analytical report must be reproduced in its entirety.*



Eagle Environmental Consulting, Inc.  
8000 W 44th Ave  
Wheat Ridge CO 80033

Martin C Eckert III  
Project Number: [none]  
Project: Noble - Baker State B #36-11

**Extractable Petroleum Hydrocarbons by 8015D - Quality Control**  
**Origins Laboratory, Inc.**

| Analyte | Result | Reporting Limit | Units | Spike Level | Source Result | %REC | %REC Limits | RPD | RPD Limit | Notes |
|---------|--------|-----------------|-------|-------------|---------------|------|-------------|-----|-----------|-------|
|---------|--------|-----------------|-------|-------------|---------------|------|-------------|-----|-----------|-------|

**Batch B2H3015 - EPA 3550B**

| Matrix Spike Dup (B2H3015-MSD1)   |     | Source: Y208663-01 |       |      | Prepared: 08/30/2022 Analyzed: 09/03/2022 |      |        |      |    |  |
|-----------------------------------|-----|--------------------|-------|------|---|------|--------|------|----|--|
| Diesel (C10-C28)                  | 646 | 25.0               | mg/kg | 500  | 88.2                                      | 112  | 70-130 | 6.42 | 35 |  |
| Residual Range Organics (C28-C40) | 479 | 100                | "     | 500  | 50.9                                      | 85.6 | 70-130 | 11.4 | 35 |  |
| Surrogate: o-Terphenyl            | 27  |                    | "     | 24.9 |   | 107  | 50-150 |      |    |  |

Origins Laboratory, Inc.



*The results in this report apply to the samples analyzed in accordance with the chain of custody document. This analytical report must be reproduced in its entirety.*

Eagle Environmental Consulting, Inc.  
8000 W 44th Ave  
Wheat Ridge CO 80033

Martin C Eckert III  
Project Number: [none]  
Project: Noble - Baker State B #36-11

## Extractable Petroleum Hydrocarbons by 8015D - Quality Control

### Origins Laboratory, Inc.

| Analyte                          | Result | Reporting Limit | Units | Spike Level | Source Result                             | %REC | %REC Limits | RPD | RPD Limit | Notes |
|----------------------------------|--------|-----------------|-------|-------------|---|------|-------------|-----|-----------|-------|
| Batch B2H3123 - EPA 5030 (soil)  |        |                 |       |             |   |      |             |     |           |       |
| Blank (B2H3123-BLK1)             |        |                 |       |             | Prepared: 08/31/2022 Analyzed: 09/04/2022 |      |             |     |           |       |
| 1,2,4-Trimethylbenzene           | ND     | 0.00200         | mg/kg |             |   |      |             |     |           | U     |
| 1,3,5-Trimethylbenzene           | ND     | 0.00200         | "     |             |   |      |             |     |           | U     |
| Benzene                          | ND     | 0.00200         | "     |             |   |      |             |     |           | U     |
| Ethylbenzene                     | ND     | 0.00200         | "     |             |   |      |             |     |           | U     |
| Naphthalene                      | ND     | 0.00380         | "     |             |   |      |             |     |           | U     |
| Toluene                          | ND     | 0.00200         | "     |             |   |      |             |     |           | U     |
| Xylenes, total                   | ND     | 0.00200         | "     |             |   |      |             |     |           | U     |
| Gasoline Range Hydrocarbons      | ND     | 0.200           | "     |             |   |      |             |     |           | U     |
| Surrogate: 1,2-Dichloroethane-d4 | 0.11   |                 | "     | 0.125       |   | 90.2 | 70-130      |     |           |       |
| Surrogate: Toluene-d8            | 0.12   |                 | "     | 0.125       |   | 99.3 | 70-130      |     |           |       |
| Surrogate: 4-Bromofluorobenzene  | 0.12   |                 | "     | 0.125       |   | 92.7 | 70-130      |     |           |       |

Origins Laboratory, Inc.



The results in this report apply to the samples analyzed in accordance with the chain of custody document. This analytical report must be reproduced in its entirety.

Eagle Environmental Consulting, Inc.  
8000 W 44th Ave  
Wheat Ridge CO 80033

Martin C Eckert III  
Project Number: [none]  
Project: Noble - Baker State B #36-11

**Volatile Organic Compounds by GC/MS SW846 8260D - Quality Control**  
**Origins Laboratory, Inc.**

| Analyte | Result | Reporting Limit | Units | Spike Level | Source Result | %REC | %REC Limits | RPD | RPD Limit | Notes |
|---------|--------|-----------------|-------|-------------|---------------|------|-------------|-----|-----------|-------|
|---------|--------|-----------------|-------|-------------|---------------|------|-------------|-----|-----------|-------|

**Batch B2H3123 - EPA 5030 (soil)**

**LCS (B2H3123-BS1)**

Prepared: 08/31/2022 Analyzed: 09/04/2022

|                                  |        |         |       |       |  |      |        |  |  |  |
|----------------------------------|--------|---------|-------|-------|--|------|--------|--|--|--|
| 1,2,4-Trimethylbenzene           | 0.107  | 0.00200 | mg/kg | 0.100 |  | 107  | 70-130 |  |  |  |
| 1,3,5-Trimethylbenzene           | 0.110  | 0.00200 | "     | 0.100 |  | 110  | 70-130 |  |  |  |
| Benzene                          | 0.103  | 0.00200 | "     | 0.100 |  | 103  | 70-130 |  |  |  |
| Ethylbenzene                     | 0.111  | 0.00200 | "     | 0.100 |  | 111  | 70-130 |  |  |  |
| Naphthalene                      | 0.0969 | 0.00380 | "     | 0.100 |  | 96.9 | 70-130 |  |  |  |
| Toluene                          | 0.0997 | 0.00200 | "     | 0.100 |  | 99.7 | 70-130 |  |  |  |
| o-Xylene                         | 0.109  | 0.00200 | "     | 0.100 |  | 109  | 70-130 |  |  |  |
| m,p-Xylene                       | 0.223  | 0.00400 | "     | 0.200 |  | 112  | 70-130 |  |  |  |
| Surrogate: 1,2-Dichloroethane-d4 | 0.11   |         | "     | 0.125 |  | 90.5 | 70-130 |  |  |  |
| Surrogate: Toluene-d8            | 0.12   |         | "     | 0.125 |  | 94.1 | 70-130 |  |  |  |
| Surrogate: 4-Bromofluorobenzene  | 0.13   |         | "     | 0.125 |  | 107  | 70-130 |  |  |  |

Origins Laboratory, Inc.



The results in this report apply to the samples analyzed in accordance with the chain of custody document. This analytical report must be reproduced in its entirety.

Eagle Environmental Consulting, Inc.  
8000 W 44th Ave  
Wheat Ridge CO 80033

Martin C Eckert III  
Project Number: [none]  
Project: Noble - Baker State B #36-11

**Volatile Organic Compounds by GC/MS SW846 8260D - Quality Control**  
**Origins Laboratory, Inc.**

| Analyte                                | Result | Reporting Limit           | Units | Spike Level | Source Result                             | %REC | %REC Limits | RPD | RPD Limit | Notes |
|--|--------|---------------------------|-------|-------------|---|------|-------------|-----|-----------|-------|
| <b>Batch B2H3123 - EPA 5030 (soil)</b> |        |                           |       |             |   |      |             |     |           |       |
| <b>Matrix Spike (B2H3123-MS1)</b>      |        | <b>Source: Y208677-01</b> |       |             | Prepared: 08/31/2022 Analyzed: 09/04/2022 |      |             |     |           |       |
| 1,2,4-Trimethylbenzene                 | 0.0776 | 0.00200                   | mg/kg | 0.100       | 0.000880                                  | 76.7 | 70-130      |     |           |       |
| 1,3,5-Trimethylbenzene                 | 0.0796 | 0.00200                   | "     | 0.100       | 0.000520                                  | 79.0 | 70-130      |     |           |       |
| Benzene                                | 0.0784 | 0.00200                   | "     | 0.100       | ND  | 78.4 | 70-130      |     |           |       |
| Ethylbenzene                           | 0.0845 | 0.00200                   | "     | 0.100       | ND  | 84.5 | 70-130      |     |           |       |
| Naphthalene                            | 0.0615 | 0.00380                   | "     | 0.100       | 0.00100                                   | 60.5 | 70-130      |     |           | QM-07 |
| Toluene                                | 0.0752 | 0.00200                   | "     | 0.100       | ND  | 75.2 | 70-130      |     |           |       |
| o-Xylene                               | 0.0825 | 0.00200                   | "     | 0.100       | 0.000520                                  | 82.0 | 70-130      |     |           |       |
| m,p-Xylene                             | 0.171  | 0.00400                   | "     | 0.200       | 0.00148                                   | 84.7 | 70-130      |     |           |       |
| Surrogate: 1,2-Dichloroethane-d4       | 0.11   |                           | "     | 0.125       |   | 85.8 | 70-130      |     |           |       |
| Surrogate: Toluene-d8                  | 0.12   |                           | "     | 0.125       |   | 94.2 | 70-130      |     |           |       |
| Surrogate: 4-Bromofluorobenzene        | 0.13   |                           | "     | 0.125       |   | 106  | 70-130      |     |           |       |

Origins Laboratory, Inc.



The results in this report apply to the samples analyzed in accordance with the chain of custody document. This analytical report must be reproduced in its entirety.

Eagle Environmental Consulting, Inc.  
8000 W 44th Ave  
Wheat Ridge CO 80033

Martin C Eckert III  
Project Number: [none]  
Project: Noble - Baker State B #36-11

## Volatile Organic Compounds by GC/MS SW846 8260D - Quality Control

### Origins Laboratory, Inc.

| Analyte                          | Result | Reporting Limit    | Units | Spike Level | Source Result                             | %REC | %REC Limits | RPD    | RPD Limit | Notes |
|----------------------------------|--------|--------------------|-------|-------------|---|------|-------------|--------|-----------|-------|
| Batch B2H3123 - EPA 5030 (soil)  |        |                    |       |             |   |      |             |        |           |       |
| Matrix Spike Dup (B2H3123-MSD1)  |        | Source: Y208677-01 |       |             | Prepared: 08/31/2022 Analyzed: 09/04/2022 |      |             |        |           |       |
| 1,2,4-Trimethylbenzene           | 0.0807 | 0.00200            | mg/kg | 0.100       | 0.000880                                  | 79.8 | 70-130      | 3.94   | 20        |       |
| 1,3,5-Trimethylbenzene           | 0.0808 | 0.00200            | "     | 0.100       | 0.000520                                  | 80.3 | 70-130      | 1.55   | 20        |       |
| Benzene                          | 0.0832 | 0.00200            | "     | 0.100       | ND  | 83.2 | 70-130      | 5.84   | 20        |       |
| Ethylbenzene                     | 0.0822 | 0.00200            | "     | 0.100       | ND  | 82.2 | 70-130      | 2.81   | 20        |       |
| Naphthalene                      | 0.0727 | 0.00380            | "     | 0.100       | 0.00100                                   | 71.7 | 70-130      | 16.8   | 20        |       |
| Toluene                          | 0.0800 | 0.00200            | "     | 0.100       | ND  | 80.0 | 70-130      | 6.21   | 20        |       |
| o-Xylene                         | 0.0825 | 0.00200            | "     | 0.100       | 0.000520                                  | 82.0 | 70-130      | 0.0242 | 20        |       |
| m,p-Xylene                       | 0.166  | 0.00400            | "     | 0.200       | 0.00148                                   | 82.3 | 70-130      | 2.85   | 20        |       |
| Surrogate: 1,2-Dichloroethane-d4 | 0.11   |                    | "     | 0.125       |   | 87.5 | 70-130      |        |           |       |
| Surrogate: Toluene-d8            | 0.12   |                    | "     | 0.125       |   | 93.9 | 70-130      |        |           |       |
| Surrogate: 4-Bromofluorobenzene  | 0.13   |                    | "     | 0.125       |   | 103  | 70-130      |        |           |       |

Origins Laboratory, Inc.



The results in this report apply to the samples analyzed in accordance with the chain of custody document. This analytical report must be reproduced in its entirety.



Eagle Environmental Consulting, Inc.  
8000 W 44th Ave  
Wheat Ridge CO 80033

Martin C Eckert III  
Project Number: [none]  
Project: Noble - Baker State B #36-11

## Volatile Organic Compounds by GC/MS SW846 8260D - Quality Control

### Origins Laboratory, Inc.

| Analyte | Result | Reporting Limit | Units | Spike Level | Source Result | %REC | %REC Limits | RPD | RPD Limit | Notes |
|---------|--------|-----------------|-------|-------------|---------------|------|-------------|-----|-----------|-------|
|---------|--------|-----------------|-------|-------------|---------------|------|-------------|-----|-----------|-------|

## Classical Chemistry Parameters - Quality Control

### Origins Laboratory, Inc.

| Analyte | Result | Reporting Limit | Units | Spike Level | Source Result | %REC | %REC Limits | RPD | RPD Limit | Notes |
|---------|--------|-----------------|-------|-------------|---------------|------|-------------|-----|-----------|-------|
|---------|--------|-----------------|-------|-------------|---------------|------|-------------|-----|-----------|-------|

#### Batch B2H3102 - Default Prep Metals

##### Blank (B2H3102-BLK1)

Prepared: 08/31/2022 Analyzed: 09/01/2022

|               |      |      |      |
|---------------|------|------|------|
| Calcium PPM   | ND   | 10.0 | mg/L |
| SAR           | 0.00 |      | SAR  |
| Magnesium PPM | ND   | 10.0 | mg/L |
| Sodium PPM    | ND   | 10.0 | "    |

##### Duplicate (B2H3102-DUP1)

Source: Y208673-03

Prepared: 08/31/2022 Analyzed: 09/01/2022

|               |      |      |      |      |      |     |
|---------------|------|------|------|------|------|-----|
| Calcium PPM   | 22.2 | 10.0 | mg/L | 27.6 | 21.5 | 50  |
| SAR           | 0.00 |      | SAR  | 2.92 | 200  | 200 |
| Magnesium PPM | 5.63 | 10.0 | mg/L | 6.95 | 21.0 | 50  |
| Sodium PPM    | 55.3 | 10.0 | "    | 66.2 | 18.0 | 50  |

#### Batch B2H3105 - Default Prep Metals

##### Blank (B2H3105-BLK1)

Prepared: 08/31/2022 Analyzed: 09/01/2022

|       |    |       |      |
|-------|----|-------|------|
| Boron | ND | 0.100 | mg/L |
|-------|----|-------|------|

##### Duplicate (B2H3105-DUP1)

Source: Y208673-03

Prepared: 08/31/2022 Analyzed: 09/01/2022

|       |       |        |      |       |      |    |        |
|-------|-------|--------|------|-------|------|----|--------|
| Boron | 0.355 | 0.0989 | mg/L | 0.206 | 53.0 | 50 | QR-DUP |
|-------|-------|--------|------|-------|------|----|--------|

Origins Laboratory, Inc.



The results in this report apply to the samples analyzed in accordance with the chain of custody document. This analytical report must be reproduced in its entirety.

Eagle Environmental Consulting, Inc.  
8000 W 44th Ave  
Wheat Ridge CO 80033

Martin C Eckert III  
Project Number: [none]  
Project: Noble - Baker State B #36-11

**Saturated Paste - Quality Control**  
**Origins Laboratory, Inc.**

| Analyte                         | Result | Reporting Limit | Units    | Spike Level | Source Result  | %REC | %REC Limits | RPD  | RPD Limit | Notes |
|---------------------------------|--------|-----------------|----------|-------------|--|------|-------------|------|-----------|-------|
| <b>Batch B2H3108 - NO PREP</b>  |        |                 |          |             |  |      |             |      |           |       |
| <b>Blank (B2H3108-BLK1)</b>     |        |                 |          |             | Prepared: 08/31/2022 Analyzed: 09/01/2022                    |      |             |      |           |       |
| Specific Conductance (EC)       | ND     | 0.00500         | mmhos/cm |             |  |      |             |      |           |       |
| pH                              | 0.00   |                 | pH Units |             |  |      |             |      |           |       |
| <b>Duplicate (B2H3108-DUP1)</b> |        |                 |          |             | Source: Y208673-03 Prepared: 08/31/2022 Analyzed: 09/01/2022 |      |             |      |           |       |
| Specific Conductance (EC)       | 0.429  | 0.00500         | mmhos/cm |             | 0.520  |      |             | 19.1 | 25        |       |
| pH                              | 8.11   |                 | pH Units |             | 7.93   |      |             | 2.24 | 25        |       |

Origins Laboratory, Inc.



*The results in this report apply to the samples analyzed in accordance with the chain of custody document. This analytical report must be reproduced in its entirety.*

Eagle Environmental Consulting, Inc.  
8000 W 44th Ave  
Wheat Ridge CO 80033

Martin C Eckert III  
Project Number: [none]  
Project: Noble - Baker State B #36-11

**PAH by 8270D SIM - Quality Control**  
**Waypoint Analytical, LLC.**

| Analyte | Result | Reporting Limit | Units | Spike Level | Source Result | %REC | %REC Limits | RPD | RPD Limit | Notes |
|---------|--------|-----------------|-------|-------------|---------------|------|-------------|-----|-----------|-------|
|---------|--------|-----------------|-------|-------------|---------------|------|-------------|-----|-----------|-------|

**Batch L635307 - 3550B**

| MSD (L 83356-MSD-L635307)   |        | Source: 83356 |       |       | Prepared: 09/01/2022 Analyzed: 09/01/2022 |      |        |      |    |  |
|-----------------------------|--------|---------------|-------|-------|---|------|--------|------|----|--|
| Fluorene                    | 0.0822 | 0.00067       | mg/Kg | 0.163 | <0.000286                                 | 50.4 | 30-130 | 16.5 | 30 |  |
| 1-Methylnaphthalene         | 0.0761 | 0.00067       | "     | 0.163 | <0.000364                                 | 46.6 | 30-130 | 17   | 30 |  |
| Pyrene                      | 0.0847 | 0.00067       | "     | 0.163 | <0.000643                                 | 51.9 | 30-130 | 20.4 | 30 |  |
| Indeno(1,2,3-cd)pyrene      | 0.0729 | 0.00067       | "     | 0.163 | <0.000627                                 | 44.7 | 30-130 | 37.9 | 30 |  |
| Fluoranthene                | 0.0855 | 0.00067       | "     | 0.163 | <0.000394                                 | 52.4 | 30-130 | 18.5 | 30 |  |
| Dibenz(a,h)anthracene       | 0.128  | 0.00067       | "     | 0.163 | <0.000614                                 | 78.5 | 30-130 | 25.8 | 30 |  |
| Chrysene                    | 0.0995 | 0.00067       | "     | 0.163 | <0.000624                                 | 61   | 30-130 | 11.8 | 30 |  |
| Naphthalene                 | 0.078  | 0.00067       | "     | 0.163 | <0.000484                                 | 47.8 | 30-130 | 15.4 | 30 |  |
| 2-Methylnaphthalene         | 0.0756 | 0.00067       | "     | 0.163 | <0.000645                                 | 46.3 | 30-130 | 16.7 | 30 |  |
| Benzo(k)fluoranthene        | 0.0941 | 0.00067       | "     | 0.163 | <0.000437                                 | 57.7 | 30-130 | 19.9 | 30 |  |
| Acenaphthene                | 0.0785 | 0.00067       | "     | 0.163 | <0.000304                                 | 48.1 | 30-130 | 16.6 | 30 |  |
| Anthracene                  | 0.0887 | 0.00067       | "     | 0.163 | <0.000334                                 | 54.4 | 30-130 | 16.8 | 30 |  |
| Benzo(a)anthracene          | 0.0868 | 0.00067       | "     | 0.163 | <0.000493                                 | 53.2 | 30-130 | 19.9 | 30 |  |
| Benzo(a)pyrene              | 0.0969 | 0.00067       | "     | 0.163 | <0.000468                                 | 59.4 | 30-130 | 15.3 | 30 |  |
| Benzo(b)fluoranthene        | 0.0512 | 0.00067       | "     | 0.163 | <0.000585                                 | 31.4 | 30-130 | 47.8 | 30 |  |
| Surrogate: 2-Fluorobiphenyl | 46.4   |               | "     | 0.327 | 159                                       | 46.4 | 33-115 |      |    |  |
| Surrogate: Nitrobenzene-d5  | 47.7   |               | "     | 0.327 | 167                                       | 47.7 | 29-110 |      |    |  |
| Surrogate: 4-Terphenyl-d14  | 54.4   |               | "     | 0.327 | 188                                       | 54.4 | 33-122 |      |    |  |

| MS (L 83356-MS-L635307) |        | Source: 83356 |       |       | Prepared: 09/01/2022 Analyzed: 09/01/2022 |      |        |  |  |  |
|-------------------------|--------|---------------|-------|-------|---|------|--------|--|--|--|
| Benzo(k)fluoranthene    | 0.115  | 0.00067       | mg/Kg | 0.167 | <0.000437                                 | 68.8 | 30-130 |  |  |  |
| Acenaphthene            | 0.0928 | 0.00067       | "     | 0.167 | <0.000304                                 | 55.5 | 30-130 |  |  |  |
| Naphthalene             | 0.0911 | 0.00067       | "     | 0.167 | <0.000484                                 | 54.5 | 30-130 |  |  |  |
| Indeno(1,2,3-cd)pyrene  | 0.107  | 0.00067       | "     | 0.167 | <0.000627                                 | 64   | 30-130 |  |  |  |
| Fluorene                | 0.097  | 0.00067       | "     | 0.167 | <0.000286                                 | 58   | 30-130 |  |  |  |
| Fluoranthene            | 0.103  | 0.00067       | "     | 0.167 | <0.000394                                 | 61.6 | 30-130 |  |  |  |
| Dibenz(a,h)anthracene   | 0.166  | 0.00067       | "     | 0.167 | <0.000614                                 | 99.4 | 30-130 |  |  |  |

Origins Laboratory, Inc.



The results in this report apply to the samples analyzed in accordance with the chain of custody document. This analytical report must be reproduced in its entirety.

Eagle Environmental Consulting, Inc.  
8000 W 44th Ave  
Wheat Ridge CO 80033

Martin C Eckert III  
Project Number: [none]  
Project: Noble - Baker State B #36-11

**PAH by 8270D SIM - Quality Control**  
**Waypoint Analytical, LLC.**

| Analyte | Result | Reporting Limit | Units | Spike Level | Source Result | %REC | %REC Limits | RPD | RPD Limit | Notes |
|---------|--------|-----------------|-------|-------------|---------------|------|-------------|-----|-----------|-------|
|---------|--------|-----------------|-------|-------------|---------------|------|-------------|-----|-----------|-------|

**Batch L635307 - 3550B**

| MS (L 83356-MS-L635307)     |        | Source: 83356 |       |       | Prepared: 09/01/2022 Analyzed: 09/01/2022 |      |        |  |  |  |
|-----------------------------|--------|---------------|-------|-------|---|------|--------|--|--|--|
| Chrysene                    | 0.112  | 0.00067       | mg/Kg | 0.167 | <0.000624                                 | 67   | 30-130 |  |  |  |
| 1-Methylnaphthalene         | 0.0903 | 0.00067       | "     | 0.167 | <0.000364                                 | 54   | 30-130 |  |  |  |
| Benzo(a)pyrene              | 0.113  | 0.00067       | "     | 0.167 | <0.000468                                 | 67.6 | 30-130 |  |  |  |
| Anthracene                  | 0.105  | 0.00067       | "     | 0.167 | <0.000334                                 | 62.8 | 30-130 |  |  |  |
| Pyrene                      | 0.104  | 0.00067       | "     | 0.167 | <0.000643                                 | 62.2 | 30-130 |  |  |  |
| 2-Methylnaphthalene         | 0.0894 | 0.00067       | "     | 0.167 | <0.000645                                 | 53.5 | 30-130 |  |  |  |
| Benzo(b)fluoranthene        | 0.0834 | 0.00067       | "     | 0.167 | <0.000585                                 | 49.9 | 30-130 |  |  |  |
| Benzo(a)anthracene          | 0.106  | 0.00067       | "     | 0.167 | <0.000493                                 | 63.4 | 30-130 |  |  |  |
| Surrogate: Nitrobenzene-d5  | 55.2   |               | "     | 0.333 | 167                                       | 55.2 | 29-110 |  |  |  |
| Surrogate: 4-Terphenyl-d14  | 64.8   |               | "     | 0.333 | 188                                       | 64.8 | 33-122 |  |  |  |
| Surrogate: 2-Fluorobiphenyl | 52.5   |               | "     | 0.333 | 159                                       | 52.5 | 33-115 |  |  |  |

| LCS (LCS-L635307)      |        | Prepared: 09/01/2022 Analyzed: 09/01/2022 |       |       |  |      |        |  |  |  |
|------------------------|--------|---|-------|-------|--|------|--------|--|--|--|
| Chrysene               | 0.121  | 0.00067                                   | mg/Kg | 0.167 |  | 72.4 | 30-130 |  |  |  |
| Dibenz(a,h)anthracene  | 0.182  | 0.00067                                   | "     | 0.167 |  | 109  | 30-130 |  |  |  |
| Fluoranthene           | 0.115  | 0.00067                                   | "     | 0.167 |  | 68.8 | 30-130 |  |  |  |
| Fluorene               | 0.106  | 0.00067                                   | "     | 0.167 |  | 63.4 | 30-130 |  |  |  |
| Indeno(1,2,3-cd)pyrene | 0.141  | 0.00067                                   | "     | 0.167 |  | 84.4 | 30-130 |  |  |  |
| Naphthalene            | 0.0998 | 0.00067                                   | "     | 0.167 |  | 59.7 | 30-130 |  |  |  |
| Pyrene                 | 0.115  | 0.00067                                   | "     | 0.167 |  | 68.8 | 30-130 |  |  |  |
| Benzo(k)fluoranthene   | 0.135  | 0.00067                                   | "     | 0.167 |  | 80.8 | 30-130 |  |  |  |
| Benzo(a)pyrene         | 0.128  | 0.00067                                   | "     | 0.167 |  | 76.6 | 30-130 |  |  |  |
| Benzo(a)anthracene     | 0.12   | 0.00067                                   | "     | 0.167 |  | 71.8 | 30-130 |  |  |  |
| Anthracene             | 0.116  | 0.00067                                   | "     | 0.167 |  | 69.4 | 30-130 |  |  |  |
| Acenaphthene           | 0.1    | 0.00067                                   | "     | 0.167 |  | 59.8 | 30-130 |  |  |  |
| 2-Methylnaphthalene    | 0.0971 | 0.00067                                   | "     | 0.167 |  | 58.1 | 30-130 |  |  |  |
| 1-Methylnaphthalene    | 0.098  | 0.00067                                   | "     | 0.167 |  | 58.6 | 30-130 |  |  |  |

Origins Laboratory, Inc.



The results in this report apply to the samples analyzed in accordance with the chain of custody document. This analytical report must be reproduced in its entirety.

Eagle Environmental Consulting, Inc.  
8000 W 44th Ave  
Wheat Ridge CO 80033

Martin C Eckert III  
Project Number: [none]  
Project: Noble - Baker State B #36-11

**PAH by 8270D SIM - Quality Control**  
**Waypoint Analytical, LLC.**

| Analyte                      | Result | Reporting Limit | Units | Spike Level | Source Result                             | %REC | %REC Limits | RPD | RPD Limit | Notes |
|------------------------------|--------|-----------------|-------|-------------|---|------|-------------|-----|-----------|-------|
| <b>Batch L635307 - 3550B</b> |        |                 |       |             |   |      |             |     |           |       |
| <b>LCS (LCS-L635307)</b>     |        |                 |       |             | Prepared: 09/01/2022 Analyzed: 09/01/2022 |      |             |     |           |       |
| Benzo(b)fluoranthene         | 0.107  | 0.00067         | mg/Kg | 0.167       |   | 64   | 30-130      |     |           |       |
| Surrogate: Nitrobenzene-d5   | 66.3   |                 | "     | 0.333       |   | 66.3 | 29-110      |     |           |       |
| Surrogate: 4-Terphenyl-d14   | 78.9   |                 | "     | 0.333       |   | 78.9 | 33-122      |     |           |       |
| Surrogate: 2-Fluorobiphenyl  | 63.3   |                 | "     | 0.333       |   | 63.3 | 33-115      |     |           |       |
| <b>LRB (LRB-L635307)</b>     |        |                 |       |             | Prepared: 09/01/2022 Analyzed: 09/01/2022 |      |             |     |           |       |
| Chrysene                     | ND     | 0.00067         | mg/Kg |             |   |      | -           |     |           |       |
| Dibenz(a,h)anthracene        | ND     | 0.00067         | "     |             |   |      | -           |     |           |       |
| Fluoranthene                 | ND     | 0.00067         | "     |             |   |      | -           |     |           |       |
| Fluorene                     | ND     | 0.00067         | "     |             |   |      | -           |     |           |       |
| Benzo(k)fluoranthene         | ND     | 0.00067         | "     |             |   |      | -           |     |           |       |
| Naphthalene                  | ND     | 0.00067         | "     |             |   |      | -           |     |           |       |
| Indeno(1,2,3-cd)pyrene       | ND     | 0.00067         | "     |             |   |      | -           |     |           |       |
| Benzo(b)fluoranthene         | ND     | 0.00067         | "     |             |   |      | -           |     |           |       |
| Benzo(a)pyrene               | ND     | 0.00067         | "     |             |   |      | -           |     |           |       |
| Benzo(a)anthracene           | ND     | 0.00067         | "     |             |   |      | -           |     |           |       |
| Acenaphthene                 | ND     | 0.00067         | "     |             |   |      | -           |     |           |       |
| 2-Methylnaphthalene          | ND     | 0.00067         | "     |             |   |      | -           |     |           |       |
| 1-Methylnaphthalene          | ND     | 0.00067         | "     |             |   |      | -           |     |           |       |
| Pyrene                       | ND     | 0.00067         | "     |             |   |      | -           |     |           |       |
| Anthracene                   | ND     | 0.00067         | "     |             |   |      | -           |     |           |       |
| Surrogate: Nitrobenzene-d5   | 61.5   |                 | "     | 0.333       |   | 61.5 | 29-110      |     |           |       |
| Surrogate: 4-Terphenyl-d14   | 72     |                 | "     | 0.333       |   | 72   | 33-122      |     |           |       |
| Surrogate: 2-Fluorobiphenyl  | 64.5   |                 | "     | 0.333       |   | 64.5 | 33-115      |     |           |       |

Origins Laboratory, Inc.



The results in this report apply to the samples analyzed in accordance with the chain of custody document. This analytical report must be reproduced in its entirety.



Eagle Environmental Consulting, Inc.  
8000 W 44th Ave  
Wheat Ridge CO 80033

Martin C Eckert III  
Project Number: [none]  
Project: Noble - Baker State B #36-11

### Notes and Definitions

U Sample is Non-Detect.

QR-DUP RPD exceeds QC acceptance criteria, this indicates source sample is not homogenous.

QM-07 The spike recovery was outside acceptance limits for the MS and/or MSD. The batch was accepted based on acceptable LCS recovery.

J Estimated Value. Analyte below reported quantitation limit.

B Analyte is found in the associated blank as well as in the sample (CLP B-flag).

ND Analyte NOT DETECTED at or above the reporting limit

RPD Relative Percent Difference

All soil results are reported on a wet weight basis.

Origins Laboratory, Inc.



*The results in this report apply to the samples analyzed in accordance with the chain of custody document. This analytical report must be reproduced in its entirety.*