

Inspection Photos

Location Name: TEP ROCKY MOUNTAIN LLC GYPSUM RANCH A Pad

Location ID: 335556



Mar 7, 2024 at 11:05:45 AM
CO



Mar 7, 2024 at 11:08:09 AM
CO

Photo # 9040 From entrance to location

Photo # 9041 Location

Inspection Photos

Location Name: TEP ROCKY MOUNTAIN LLC GYPSUM RANCH A Pad

Location ID: 335556



Photo # 9042 Location



Photo # 9043 Location

Inspection Photos

Location Name: TEP ROCKY MOUNTAIN LLC GYPSUM RANCH A Pad

Location ID: 335556



Mar 7, 2024 at 11:25:34 AM
CO

Photo # 9044 Location



Mar 7, 2024 at 11:29:52 AM
CO

Photo # 9045 Location

Inspection Photos

Location Name: TEP ROCKY MOUNTAIN LLC GYPSUM RANCH A Pad

Location ID: 335556



Photo # 9046 Open ended load line



Photo # 9047 Open ended load line

Inspection Photos

Location Name: TEP ROCKY MOUNTAIN LLC GYPSUM RANCH A Pad

Location ID: 335556



Photo # 9048 Open port on production tank/wildlife hazard



Photo # 9049 Open port on production tank/wildlife hazard



Inspection Photos

Location Name: TEP ROCKY MOUNTAIN LLC GYPSUM RANCH A Pad

Location ID: 335556

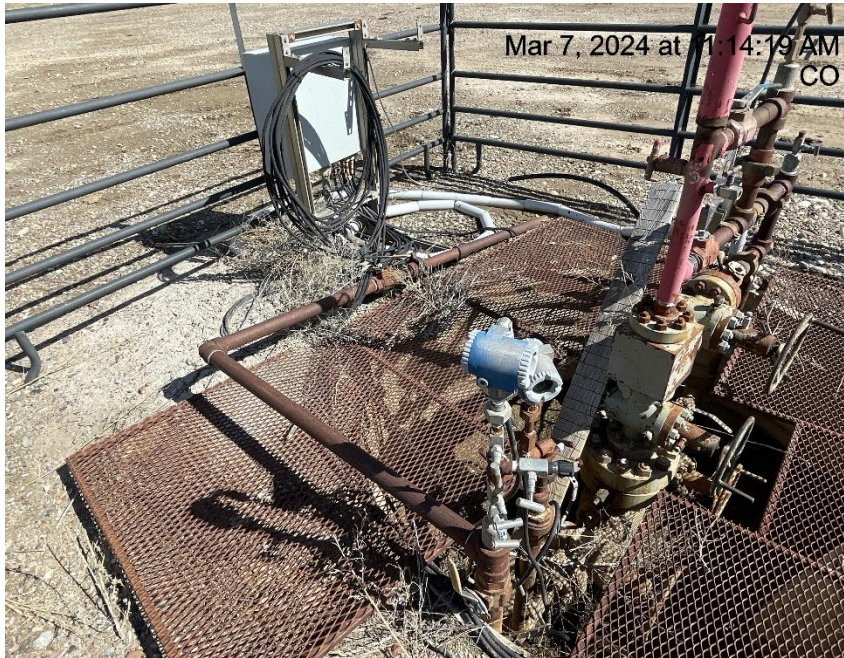


Photo # 9050 Gypsum Ranch A1 well bradenhead line tied into ECD/No Form 4 Sundry



Photo # 9051 Gypsum Ranch A1 well bradenhead line tied into ECD/No Form 4 Sundry

Inspection Photos

Location Name: TEP ROCKY MOUNTAIN LLC GYPSUM RANCH A Pad

Location ID: 335556



Photo # 9052 Gypsum Ranch A1 well bradenhead line tied into ECD/No Form 4 Sundry



Photo # 9053 Gypsum Ranch A1 well bradenhead line tied into ECD/No Form 4 Sundry

Inspection Photos

Location Name: TEP ROCKY MOUNTAIN LLC GYPSUM RANCH A Pad

Location ID: 335556



Photo # 9054 Tank label lacks required information



Photo # 9055 Tank label lacks required information



Inspection Photos

Location Name: TEP ROCKY MOUNTAIN LLC GYPSUM RANCH A Pad

Location ID: 335556

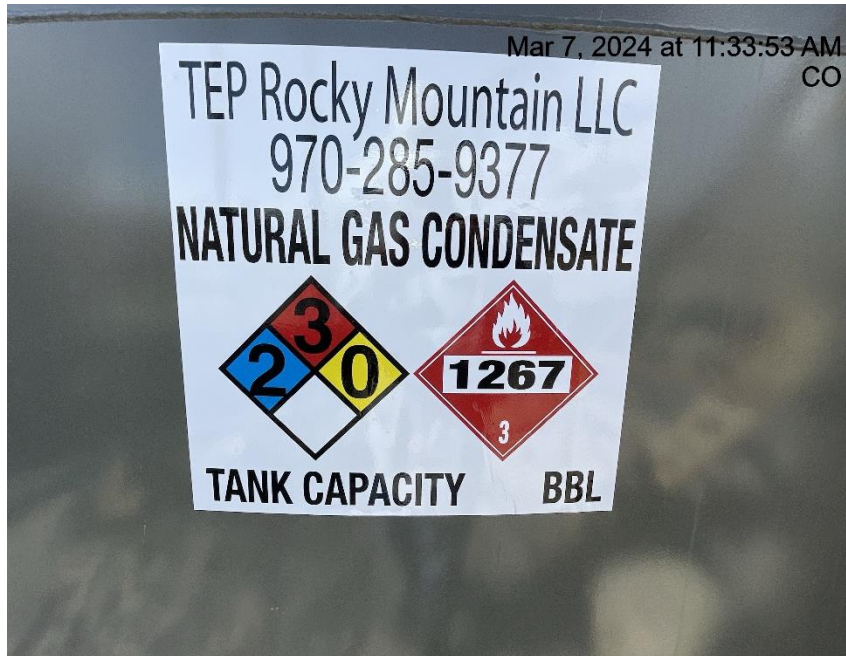


Photo # 9056 Tank label lacks required information



Photo # 9057 Improperly marked deadman

Inspection Photos

Location Name: TEP ROCKY MOUNTAIN LLC GYPSUM RANCH A Pad

Location ID: 335556



Photo # 9058 Debris



Photo # 9059 Cellar not properly covered/wildlife & personnel hazard

