



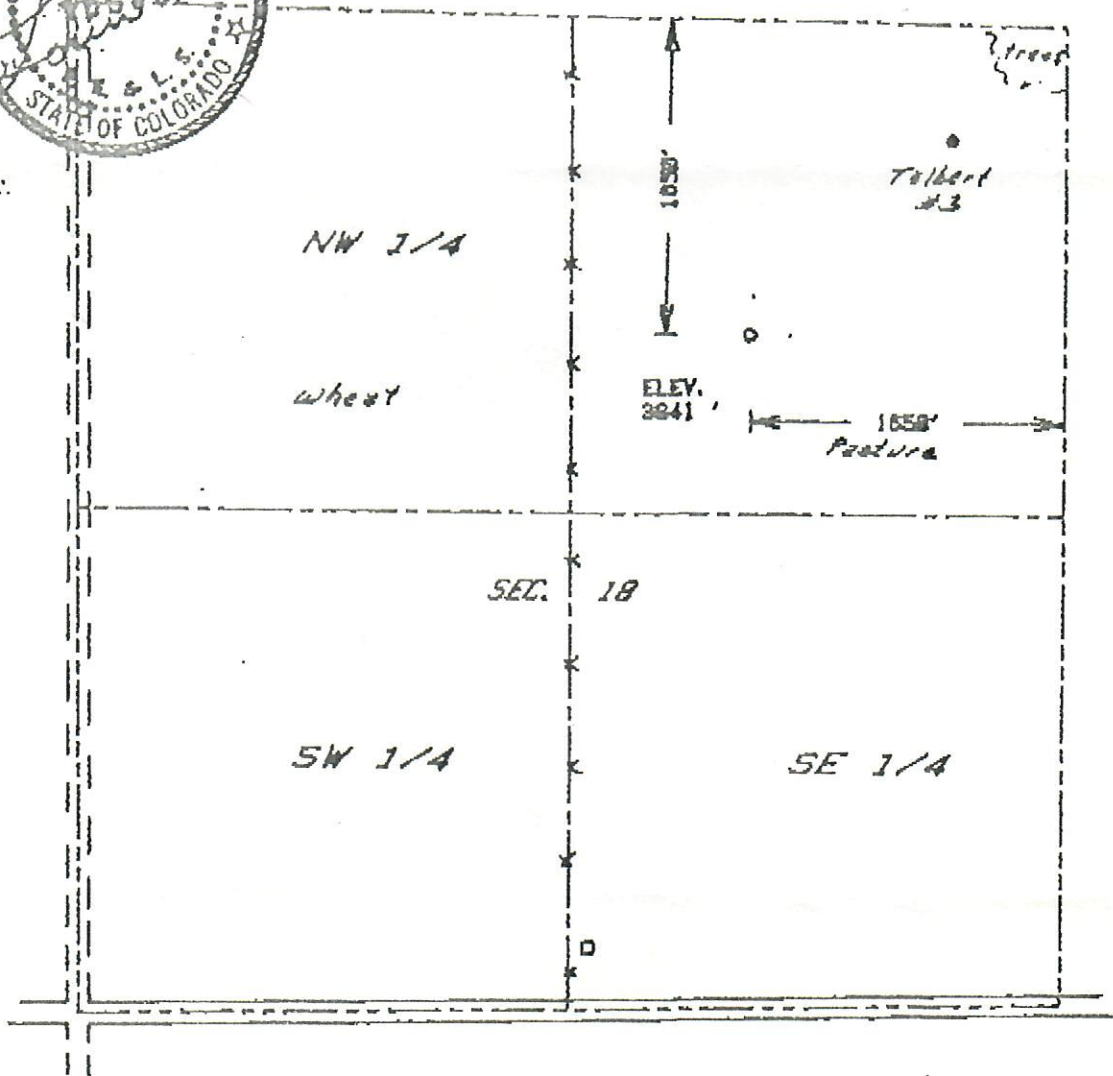
00520943

THE ACCOMPANYING PLAT IS AN ACCURATE REPRESENTATION SHOWING THE LOCATION OF A PROPOSED WELL. THIS LOCATION MAY BE DESCRIBED AS A POINT 1650 FEET SOUTH OF THE NORTH LINE, AND 1650 FEET WEST OF THE EAST LINE OF SECTION 18, TOWNSHIP 16 S RANGE 41 W OF THE 6th P.M., CHEYENNE COUNTY, COLORADO. THE SURFACE ELEVATION AT THIS POINT IS 3841 FEET m.s.l.

RECEIVED

MAY 10 1986

COLD. OIL & GAS CONS. COMM.

*Harmon*

SCALE - 1"=1000'

- SURVEYED POINT
- REFERENCE STAKE (200' N, 200' E)
- NE 1/4 SEC. 18, T 16 S, R 41 W

**HARMON
ENGINEERING
SERVICES**

TALBERT #2

TXO PRODUCTION CORP

CHEYENNE CO., COLORADO 17 MAY 1986

2871-328

76/73

⑦