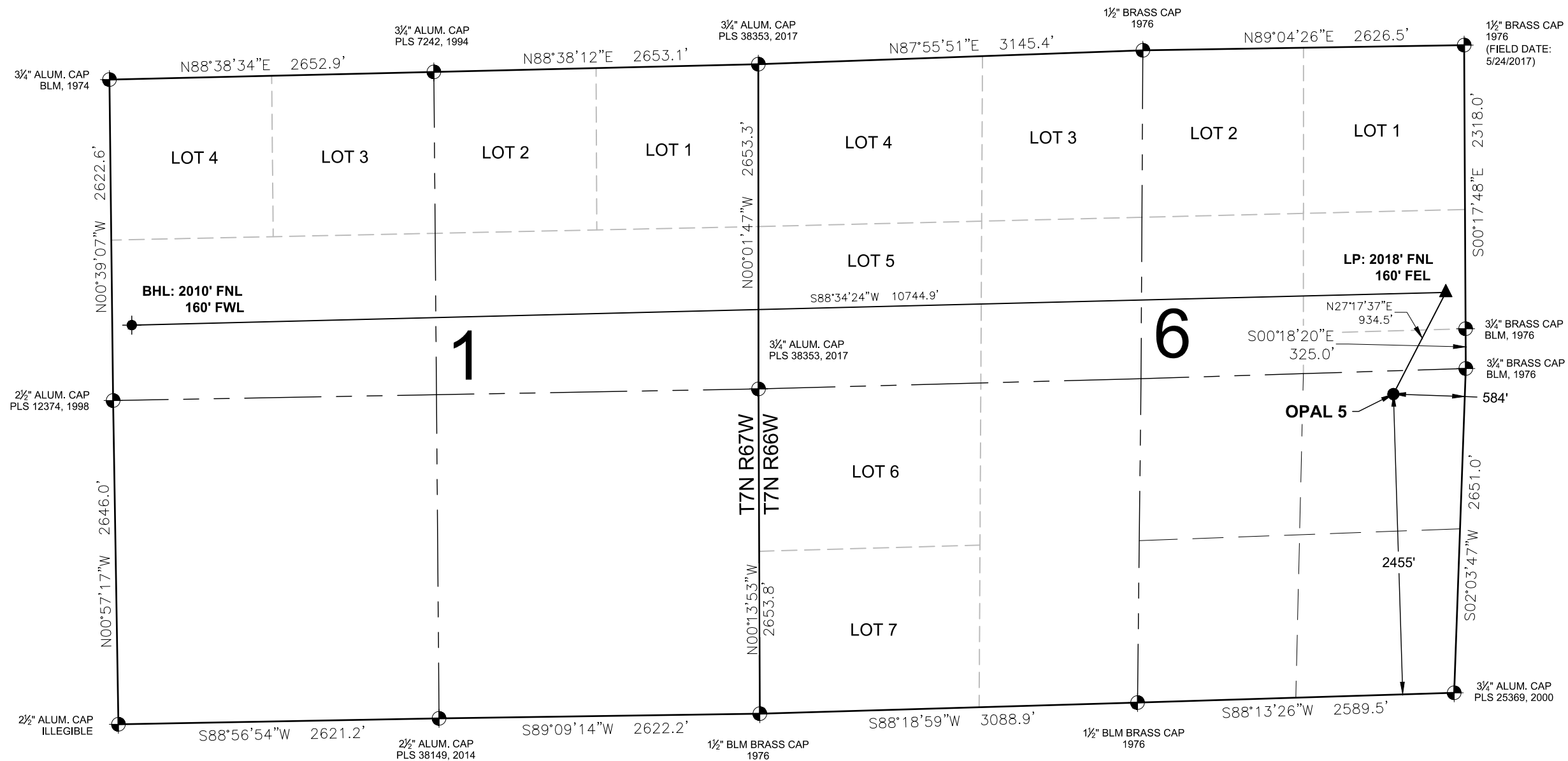


OPAL 5 WELL LOCATION EXHIBIT



WELL **OPAL 5** TO BE
LOCATED **2455' FSL & 584' FEL**

WELL BORE COORDINATES
(NAD83)

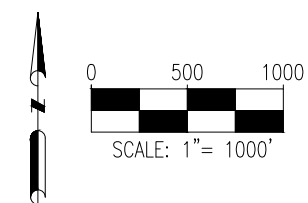
SURFACE LOCATION:
GROUND ELEVATION=5129'
LATITUDE:40.603128°N
LONGITUDE:104.813097°W

LANDING POINT
LATITUDE:40.605398°N
LONGITUDE:104.811530°W

BOTTOM HOLE:
LATITUDE:40.604887°N
LONGITUDE:104.850222°W

WELL NOTES:
BH LOCATION PROVIDED BY CLIENT.
LAND SURFACE USE - DRY LAND CROP
SEE LOCATION DRAWING FOR ADDITIONAL IMPROVEMENTS
WITHIN 500'







PDOP=1.9
GPS OPERATOR: STEVE ROERIG



NOTES:

1. THIS FIELD SURVEY CONFORMS TO THE MINIMUM STANDARDS SET BY THE COGCC, RULE NO. 216
2. ALL BEARINGS ARE GRID BEARINGS OF THE COLORADO STATE PLANE COORDINATE SYSTEM, NORTH ZONE, NORTH AMERICAN DATUM 1983/2011. THE LINEAL DIMENSIONS AS SHOWN HEREIN ARE GRID DISTANCES BASED UPON THE "U.S. SURVEY FOOT." TO DERIVE GROUND DISTANCES MULTIPLY SHOWN DISTANCE BY 1.00025891.
3. FIELD VERIFICATION OF MONUMENTS COMPLETED WITHIN 1 YEAR OF SIGNATURE DATE, UNLESS OTHERWISE NOTED.

LEGEND

- LEGEND**
- | | |
|---|---|
|  = EXISTING MONUMENT |  = LANDING POINT |
|  = CALCULATED POSITION |  = EXISTING WELL |
|  = PROPOSED WELL | LP = LANDING POINT |
|  = BOTTOM HOLE | BHL = BOTTOM HOLE |

I, KEVIN J. MARTIN, A LICENSED PROFESSIONAL LAND SURVEYOR IN THE STATE OF COLORADO, DO HEREBY STATE TO **BAYSWATER EXPLORATION & PRODUCTION, LLC** THAT THE WELL LOCATION EXHIBIT SHOWN HEREON WAS PREPARED BY ME OR UNDER MY DIRECT SUPERVISION AND THE DRAWING SHOWN HEREON ACCURATELY DEPICTS THE PROPOSED LOCATION OF THE WELL. THIS EXHIBIT MEETS THE REQUIREMENTS OF A GIS LAND POSITION AS DEFINED BY SECTION 38-51-109.3 C.R.S. AND AS SUCH PER SECTION 38-51-109.3 C.R.S. CANNOT BE RELIED UPON TO DETERMINE OWNERSHIP.



KEVIN J. MARTIN, PLS 38580
COLORADO LICENSED PROFESSIONAL LAND SURVEYOR
FOR AND ON BEHALF OF P.F.S., LLC
d.b.a. ASCENT GEOMATICS SOLUTIONS



FIELD DATE:
10-30-22

DRAWING DATE:
12-16-22

BY:
TRP

CHECKED:
NJH

WELL NAME:
OPAL 5

SURFACE LOCATION:
NE 1/4 SE 1/4 SEC. 6, T7N, R66W, 6TH P.M.
WELD COUNTY, COLORADO

PREPARED FOR:	
---------------	--

