

BONANZA CREEK ENERGY

WELD COUNTY

SEC 36-T5N-R63W

STATE NORTH PLATTE F-36 FED 25N-20-08

OWB

Plan: PROPOSAL 1

Standard Planning Report

03 January, 2024

Project: WELD COUNTY
Site: SEC 36-T5N-R63W
Well: STATE NORTH PLATTE F-36 FED 25N-20-08
Wellbore: OWB
Design: PROPOSAL 1

PROJECT DETAILS: WELD COUNTY
Geodetic System: US State Plane 1983
Datum: North American Datum 1983
Ellipsoid: GRS 1980
Zone: Colorado Northern Zone
System Datum: Mean Sea Level



Azimuths to True North
Magnetic North: 7.49°

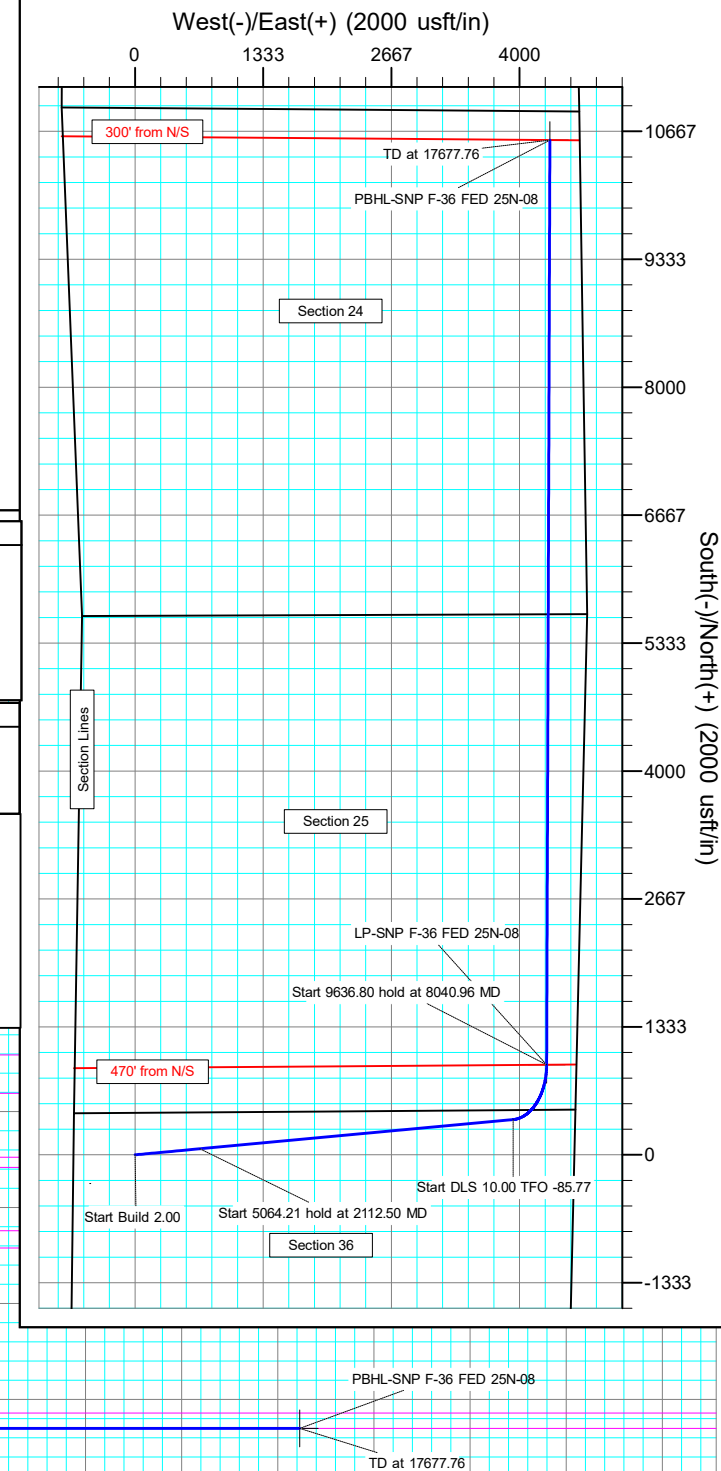
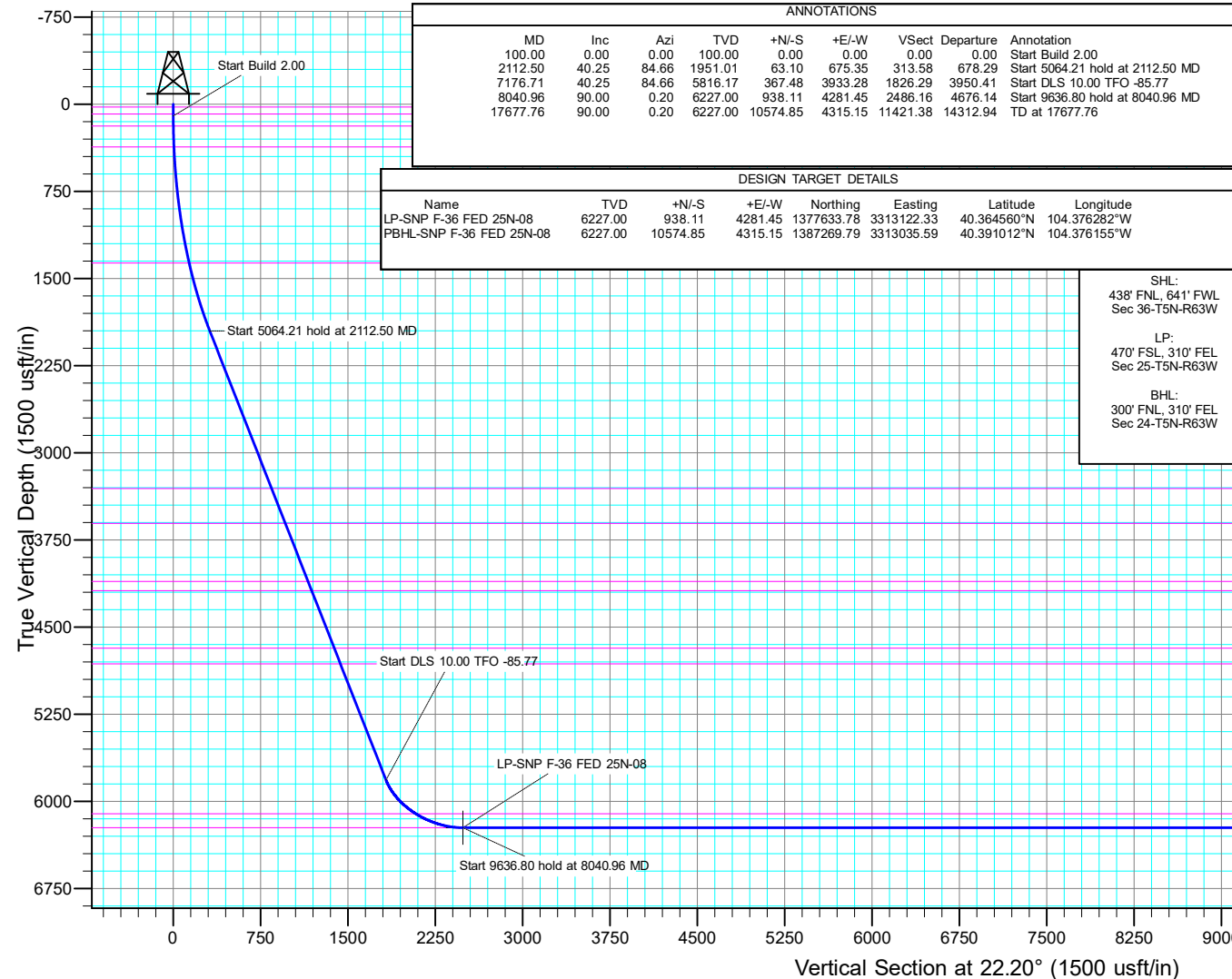
Magnetic Field
Strength: 51814.4nT
Dip Angle: 66.61°
Date: 12/20/2022
Model: IGRF2020

WELL DETAILS: STATE NORTH PLATTE F-36 FED 25N-20-08

+N/-S	+E/-W	Northing	Easting	Latitude	Longitude	Slot
0.00	0.00	1376642.28	3308853.12	40.361986°N	104.391646°W	

SECTION DETAILS

Sec	MD	Inc	Azi	TVD	+N/-S	+E/-W	Dleg	TFace	VSect	Target
1	0.00	0.00	0.00	0.00	0.00	0.00	0.00	0.00	0.00	
2	100.00	0.00	0.00	100.00	0.00	0.00	0.00	0.00	0.00	
3	2112.50	40.25	84.66	1951.01	63.10	675.35	2.00	84.66	313.58	
4	7176.71	40.25	84.66	5816.17	367.48	3933.28	0.00	0.00	1826.29	
5	8040.96	90.00	0.20	6227.00	938.11	4281.45	10.00	-85.77	2486.16	LP-SNP F-36 FED 25N-08
6	17677.76	90.00	0.20	6227.00	10574.85	4315.15	0.00	0.00	11421.38	PBHL-SNP F-36 FED 25N-08



Civitas Resources

Planning Report

Database:	EDM	Local Co-ordinate Reference:	Well STATE NORTH PLATTE F-36 FED 25N-20-08
Company:	BONANZA CREEK ENERGY	TVD Reference:	KB 25' @ 4569.00usft
Project:	WELD COUNTY	MD Reference:	KB 25' @ 4569.00usft
Site:	SEC 36-T5N-R63W	North Reference:	True
Well:	STATE NORTH PLATTE F-36 FED 25N-20-08	Survey Calculation Method:	Minimum Curvature
Wellbore:	OWB		
Design:	PROPOSAL 1		

Project	WELD COUNTY		
Map System:	US State Plane 1983	System Datum:	Mean Sea Level
Geo Datum:	North American Datum 1983		
Map Zone:	Colorado Northern Zone		Using geodetic scale factor

Site	SEC 36-T5N-R63W		
Site Position:		Northing:	1,377,067.46 usft
From:	Lat/Long	Easting:	3,308,212.41 usft
Position Uncertainty:	0.00 usft	Slot Radius:	13.200 in
		Latitude:	40.363175°N
		Longitude:	104.393926°W
		Grid Convergence:	0.71 °

Well	STATE NORTH PLATTE F-36 FED 25N-20-08		
Well Position	+N/-S	-433.16 usft	Northing:
	+E/-W	635.39 usft	Easting:
Position Uncertainty	0.00 usft	Wellhead Elevation:	
		Latitude:	40.361986°N
		Longitude:	104.391646°W
		Ground Level:	4,544.00 usft

Wellbore	OWB		
Magnetics	Model Name	Sample Date	Declination (°)
	IGRF2020	12/20/2022	7.49
			Dip Angle (°)
			66.61
			Field Strength (nT)
			51,814.43283173

Design	PROPOSAL 1		
Audit Notes:			
Version:	Phase:	PROTOTYPE	Tie On Depth:
			0.00
Vertical Section:	Depth From (TVD) (usft)	+N/-S (usft)	+E/-W (usft)
	0.00	0.00	0.00
			Direction (°)
			22.20

Plan Survey Tool Program	Date	1/2/2024		
Depth From (usft)	Depth To (usft)	Survey (Wellbore)	Tool Name	Remarks
1	0.00	17,677.76 PROPOSAL 1 (OWB)	MWD OWSG	
			OWSG MWD - Standard	

Plan Sections										
Measured Depth (usft)	Inclination (°)	Azimuth (°)	Vertical Depth (usft)	+N/-S (usft)	+E/-W (usft)	Dogleg Rate (°/100ft)	Build Rate (°/100ft)	Turn Rate (°/100ft)	TFO (°)	Target
0.00	0.00	0.00	0.00	0.00	0.00	0.00	0.00	0.00	0.00	
100.00	0.00	0.00	100.00	0.00	0.00	0.00	0.00	0.00	0.00	
2,112.50	40.25	84.66	1,951.01	63.10	675.35	2.00	2.00	0.00	84.66	
7,176.71	40.25	84.66	5,816.17	367.48	3,933.28	0.00	0.00	0.00	0.00	
8,040.96	90.00	0.20	6,227.00	938.11	4,281.45	10.00	5.76	-9.77	-85.77	LP-SNP F-36 FED 25
17,677.76	90.00	0.20	6,227.00	10,574.85	4,315.15	0.00	0.00	0.00	0.00	PBHL-SNP F-36 FED

Civitas Resources

Planning Report

Database:	EDM	Local Co-ordinate Reference:	Well STATE NORTH PLATTE F-36 FED 25N-20-08
Company:	BONANZA CREEK ENERGY	TVD Reference:	KB 25' @ 4569.00usft
Project:	WELD COUNTY	MD Reference:	KB 25' @ 4569.00usft
Site:	SEC 36-T5N-R63W	North Reference:	True
Well:	STATE NORTH PLATTE F-36 FED 25N-20-08	Survey Calculation Method:	Minimum Curvature
Wellbore:	OWB		
Design:	PROPOSAL 1		

Planned Survey									
Measured Depth (usft)	Inclination (°)	Azimuth (°)	Vertical Depth (usft)	+N/-S (usft)	+E/-W (usft)	Vertical Section (usft)	Dogleg Rate (°/100ft)	Build Rate (°/100ft)	Turn Rate (°/100ft)
0.00	0.00	0.00	0.00	0.00	0.00	0.00	0.00	0.00	0.00
24.00	0.00	0.00	24.00	0.00	0.00	0.00	0.00	0.00	0.00
Alluvium									
84.00	0.00	0.00	84.00	0.00	0.00	0.00	0.00	0.00	0.00
Laramie-Fox Hills Formation									
100.00	0.00	0.00	100.00	0.00	0.00	0.00	0.00	0.00	0.00
Start Build 2.00									
187.01	1.74	84.66	187.00	0.12	1.32	0.61	2.00	2.00	0.00
Pierre Formation									
200.00	2.00	84.66	199.98	0.16	1.74	0.81	2.00	2.00	0.00
300.00	4.00	84.66	299.84	0.65	6.95	3.23	2.00	2.00	0.00
367.39	5.35	84.66	367.00	1.16	12.42	5.76	2.00	2.00	0.00
Upper Pierre aquifer									
400.00	6.00	84.66	399.45	1.46	15.63	7.26	2.00	2.00	0.00
500.00	8.00	84.66	498.70	2.59	27.76	12.89	2.00	2.00	0.00
600.00	10.00	84.66	597.47	4.05	43.33	20.12	2.00	2.00	0.00
700.00	12.00	84.66	695.62	5.82	62.33	28.94	2.00	2.00	0.00
800.00	14.00	84.66	793.06	7.92	84.73	39.34	2.00	2.00	0.00
900.00	16.00	84.66	889.64	10.32	110.50	51.31	2.00	2.00	0.00
1,000.00	18.00	84.66	985.27	13.04	139.61	64.82	2.00	2.00	0.00
1,100.00	20.00	84.66	1,079.82	16.07	172.02	79.87	2.00	2.00	0.00
1,200.00	22.00	84.66	1,173.17	19.40	207.70	96.44	2.00	2.00	0.00
1,300.00	24.00	84.66	1,265.21	23.04	246.60	114.50	2.00	2.00	0.00
1,400.00	26.00	84.66	1,355.84	26.97	288.68	134.04	2.00	2.00	0.00
1,412.43	26.25	84.66	1,367.00	27.48	294.13	136.57	2.00	2.00	0.00
Pierre Formation									
1,500.00	28.00	84.66	1,444.94	31.19	333.88	155.02	2.00	2.00	0.00
1,600.00	30.00	84.66	1,532.39	35.70	382.15	177.44	2.00	2.00	0.00
1,700.00	32.00	84.66	1,618.11	40.49	433.42	201.25	2.00	2.00	0.00
1,800.00	34.00	84.66	1,701.97	45.56	487.65	226.42	2.00	2.00	0.00
1,900.00	36.00	84.66	1,783.88	50.90	544.75	252.94	2.00	2.00	0.00
2,000.00	38.00	84.66	1,863.74	56.49	604.67	280.76	2.00	2.00	0.00
2,100.00	40.00	84.66	1,941.45	62.35	667.33	309.85	2.00	2.00	0.00
2,112.50	40.25	84.66	1,951.01	63.10	675.35	313.58	2.00	2.00	0.00
Start 5064.21 hold at 2112.50 MD									
2,200.00	40.25	84.66	2,017.79	68.36	731.64	339.71	0.00	0.00	0.00
2,300.00	40.25	84.66	2,094.11	74.37	795.97	369.58	0.00	0.00	0.00
2,400.00	40.25	84.66	2,170.44	80.38	860.30	399.45	0.00	0.00	0.00
2,500.00	40.25	84.66	2,246.76	86.39	924.64	429.33	0.00	0.00	0.00
2,600.00	40.25	84.66	2,323.08	92.40	988.97	459.20	0.00	0.00	0.00
2,700.00	40.25	84.66	2,399.41	98.41	1,053.30	489.07	0.00	0.00	0.00
2,800.00	40.25	84.66	2,475.73	104.42	1,117.63	518.94	0.00	0.00	0.00
2,900.00	40.25	84.66	2,552.05	110.43	1,181.97	548.81	0.00	0.00	0.00
3,000.00	40.25	84.66	2,628.38	116.44	1,246.30	578.68	0.00	0.00	0.00
3,100.00	40.25	84.66	2,704.70	122.45	1,310.63	608.55	0.00	0.00	0.00
3,200.00	40.25	84.66	2,781.02	128.46	1,374.96	638.42	0.00	0.00	0.00
3,300.00	40.25	84.66	2,857.35	134.47	1,439.30	668.29	0.00	0.00	0.00
3,400.00	40.25	84.66	2,933.67	140.48	1,503.63	698.16	0.00	0.00	0.00
3,500.00	40.25	84.66	3,009.99	146.49	1,567.96	728.03	0.00	0.00	0.00
3,600.00	40.25	84.66	3,086.31	152.50	1,632.29	757.90	0.00	0.00	0.00
3,700.00	40.25	84.66	3,162.64	158.51	1,696.63	787.77	0.00	0.00	0.00
3,800.00	40.25	84.66	3,238.96	164.52	1,760.96	817.64	0.00	0.00	0.00

Civitas Resources

Planning Report

Database:	EDM	Local Co-ordinate Reference:	Well STATE NORTH PLATTE F-36 FED 25N-20-08
Company:	BONANZA CREEK ENERGY	TVD Reference:	KB 25' @ 4569.00usft
Project:	WELD COUNTY	MD Reference:	KB 25' @ 4569.00usft
Site:	SEC 36-T5N-R63W	North Reference:	True
Well:	STATE NORTH PLATTE F-36 FED 25N-20-08	Survey Calculation Method:	Minimum Curvature
Wellbore:	OWB		
Design:	PROPOSAL 1		

Planned Survey

Measured Depth (usft)	Inclination (°)	Azimuth (°)	Vertical Depth (usft)	+N/-S (usft)	+E/-W (usft)	Vertical Section (usft)	Dogleg Rate (°/100ft)	Build Rate (°/100ft)	Turn Rate (°/100ft)
3,889.15	40.25	84.66	3,307.00	169.88	1,818.31	844.27	0.00	0.00	0.00
Larimer ("Parkman") sandstone									
3,900.00	40.25	84.66	3,315.28	170.53	1,825.29	847.51	0.00	0.00	0.00
4,000.00	40.25	84.66	3,391.61	176.54	1,889.62	877.38	0.00	0.00	0.00
4,100.00	40.25	84.66	3,467.93	182.55	1,953.96	907.26	0.00	0.00	0.00
4,200.00	40.25	84.66	3,544.25	188.57	2,018.29	937.13	0.00	0.00	0.00
4,282.21	40.25	84.66	3,607.00	193.51	2,071.18	961.68	0.00	0.00	0.00
Pierre Formation									
4,300.00	40.25	84.66	3,620.58	194.58	2,082.62	967.00	0.00	0.00	0.00
4,400.00	40.25	84.66	3,696.90	200.59	2,146.95	996.87	0.00	0.00	0.00
4,500.00	40.25	84.66	3,773.22	206.60	2,211.29	1,026.74	0.00	0.00	0.00
4,600.00	40.25	84.66	3,849.55	212.61	2,275.62	1,056.61	0.00	0.00	0.00
4,700.00	40.25	84.66	3,925.87	218.62	2,339.95	1,086.48	0.00	0.00	0.00
4,800.00	40.25	84.66	4,002.19	224.63	2,404.28	1,116.35	0.00	0.00	0.00
4,900.00	40.25	84.66	4,078.51	230.64	2,468.62	1,146.22	0.00	0.00	0.00
4,937.32	40.25	84.66	4,107.00	232.88	2,492.63	1,157.37	0.00	0.00	0.00
Terry ("Sussex") sandstone									
5,000.00	40.25	84.66	4,154.84	236.65	2,532.95	1,176.09	0.00	0.00	0.00
5,042.14	40.25	84.66	4,187.00	239.18	2,560.06	1,188.68	0.00	0.00	0.00
Pierre Formation									
5,100.00	40.25	84.66	4,231.16	242.66	2,597.28	1,205.96	0.00	0.00	0.00
5,200.00	40.25	84.66	4,307.48	248.67	2,661.61	1,235.83	0.00	0.00	0.00
5,300.00	40.25	84.66	4,383.81	254.68	2,725.94	1,265.70	0.00	0.00	0.00
5,400.00	40.25	84.66	4,460.13	260.69	2,790.28	1,295.57	0.00	0.00	0.00
5,500.00	40.25	84.66	4,536.45	266.70	2,854.61	1,325.44	0.00	0.00	0.00
5,600.00	40.25	84.66	4,612.78	272.71	2,918.94	1,355.32	0.00	0.00	0.00
5,690.70	40.25	84.66	4,682.00	278.16	2,977.29	1,382.41	0.00	0.00	0.00
Hygiene ("Shannon") sandstone									
5,700.00	40.25	84.66	4,689.10	278.72	2,983.27	1,385.19	0.00	0.00	0.00
5,800.00	40.25	84.66	4,765.42	284.73	3,047.61	1,415.06	0.00	0.00	0.00
5,867.58	40.25	84.66	4,817.00	288.79	3,091.08	1,435.24	0.00	0.00	0.00
Pierre Formation									
5,900.00	40.25	84.66	4,841.75	290.74	3,111.94	1,444.93	0.00	0.00	0.00
6,000.00	40.25	84.66	4,918.07	296.75	3,176.27	1,474.80	0.00	0.00	0.00
6,100.00	40.25	84.66	4,994.39	302.76	3,240.60	1,504.67	0.00	0.00	0.00
6,200.00	40.25	84.66	5,070.72	308.77	3,304.94	1,534.54	0.00	0.00	0.00
6,300.00	40.25	84.66	5,147.04	314.78	3,369.27	1,564.41	0.00	0.00	0.00
6,400.00	40.25	84.66	5,223.36	320.80	3,433.60	1,594.28	0.00	0.00	0.00
6,500.00	40.25	84.66	5,299.68	326.81	3,497.93	1,624.15	0.00	0.00	0.00
6,600.00	40.25	84.66	5,376.01	332.82	3,562.27	1,654.02	0.00	0.00	0.00
6,700.00	40.25	84.66	5,452.33	338.83	3,626.60	1,683.89	0.00	0.00	0.00
6,800.00	40.25	84.66	5,528.65	344.84	3,690.93	1,713.76	0.00	0.00	0.00
6,900.00	40.25	84.66	5,604.98	350.85	3,755.26	1,743.63	0.00	0.00	0.00
7,000.00	40.25	84.66	5,681.30	356.86	3,819.60	1,773.50	0.00	0.00	0.00
7,100.00	40.25	84.66	5,757.62	362.87	3,883.93	1,803.37	0.00	0.00	0.00
7,176.71	40.25	84.66	5,816.17	367.48	3,933.28	1,826.29	0.00	0.00	0.00
Start DLS 10.00 TFO -85.77									
7,200.00	40.48	81.08	5,833.92	369.35	3,948.24	1,833.67	10.00	0.98	-15.37
7,250.00	41.33	73.56	5,871.73	376.54	3,980.13	1,852.38	10.00	1.71	-15.05
7,300.00	42.65	66.35	5,908.91	388.02	4,011.50	1,874.86	10.00	2.65	-14.42
7,350.00	44.41	59.54	5,945.18	403.70	4,042.11	1,900.94	10.00	3.50	-13.60
7,400.00	46.54	53.19	5,980.26	423.45	4,071.74	1,930.42	10.00	4.26	-12.70

Civitas Resources

Planning Report

Database:	EDM	Local Co-ordinate Reference:	Well STATE NORTH PLATTE F-36 FED 25N-20-08
Company:	BONANZA CREEK ENERGY	TVD Reference:	KB 25' @ 4569.00usft
Project:	WELD COUNTY	MD Reference:	KB 25' @ 4569.00usft
Site:	SEC 36-T5N-R63W	North Reference:	True
Well:	STATE NORTH PLATTE F-36 FED 25N-20-08	Survey Calculation Method:	Minimum Curvature
Wellbore:	OWB		
Design:	PROPOSAL 1		

Planned Survey									
Measured Depth (usft)	Inclination (°)	Azimuth (°)	Vertical Depth (usft)	+N/-S (usft)	+E/-W (usft)	Vertical Section (usft)	Dogleg Rate (°/100ft)	Build Rate (°/100ft)	Turn Rate (°/100ft)
7,450.00	48.99	47.31	6,013.88	447.12	4,100.15	1,963.08	10.00	4.91	-11.77
7,500.00	51.73	41.87	6,045.79	474.55	4,127.14	1,998.67	10.00	5.47	-10.88
7,550.00	54.69	36.84	6,075.75	505.51	4,152.49	2,036.91	10.00	5.93	-10.06
7,600.00	57.85	32.18	6,103.52	539.77	4,176.01	2,077.52	10.00	6.32	-9.32
7,606.58	58.28	31.59	6,107.00	544.52	4,178.96	2,083.03	10.00	6.51	-8.95
Sharon Springs Member									
7,650.00	61.17	27.84	6,128.89	577.08	4,197.52	2,120.19	10.00	6.65	-8.65
7,700.00	64.62	23.77	6,151.68	617.14	4,216.86	2,164.59	10.00	6.90	-8.14
7,750.00	68.17	19.93	6,171.71	659.66	4,233.88	2,210.38	10.00	7.11	-7.68
7,800.00	71.81	16.28	6,188.82	704.30	4,248.46	2,257.23	10.00	7.28	-7.30
7,850.00	75.51	12.78	6,202.89	750.74	4,260.48	2,304.76	10.00	7.41	-7.00
7,900.00	79.27	9.39	6,213.81	798.61	4,269.84	2,352.62	10.00	7.51	-6.77
7,950.00	83.06	6.09	6,221.49	847.55	4,276.49	2,400.44	10.00	7.58	-6.60
8,000.00	86.87	2.84	6,225.88	897.19	4,280.36	2,447.87	10.00	7.63	-6.50
8,040.96	90.00	0.20	6,227.00	938.11	4,281.45	2,486.17	10.00	7.64	-6.45
Start 9636.80 hold at 8040.96 MD - Niobrara Formation									
8,100.00	90.00	0.20	6,227.00	997.15	4,281.65	2,540.91	0.00	0.00	0.00
8,200.00	90.00	0.20	6,227.00	1,097.15	4,282.00	2,633.63	0.00	0.00	0.00
8,300.00	90.00	0.20	6,227.00	1,197.15	4,282.35	2,726.35	0.00	0.00	0.00
8,400.00	90.00	0.20	6,227.00	1,297.15	4,282.70	2,819.07	0.00	0.00	0.00
8,500.00	90.00	0.20	6,227.00	1,397.15	4,283.05	2,911.79	0.00	0.00	0.00
8,600.00	90.00	0.20	6,227.00	1,497.15	4,283.40	3,004.51	0.00	0.00	0.00
8,700.00	90.00	0.20	6,227.00	1,597.14	4,283.75	3,097.23	0.00	0.00	0.00
8,800.00	90.00	0.20	6,227.00	1,697.14	4,284.10	3,189.95	0.00	0.00	0.00
8,900.00	90.00	0.20	6,227.00	1,797.14	4,284.45	3,282.67	0.00	0.00	0.00
9,000.00	90.00	0.20	6,227.00	1,897.14	4,284.80	3,375.39	0.00	0.00	0.00
9,100.00	90.00	0.20	6,227.00	1,997.14	4,285.15	3,468.11	0.00	0.00	0.00
9,200.00	90.00	0.20	6,227.00	2,097.14	4,285.50	3,560.83	0.00	0.00	0.00
9,300.00	90.00	0.20	6,227.00	2,197.14	4,285.85	3,653.55	0.00	0.00	0.00
9,400.00	90.00	0.20	6,227.00	2,297.14	4,286.20	3,746.27	0.00	0.00	0.00
9,500.00	90.00	0.20	6,227.00	2,397.14	4,286.55	3,838.99	0.00	0.00	0.00
9,600.00	90.00	0.20	6,227.00	2,497.14	4,286.90	3,931.70	0.00	0.00	0.00
9,700.00	90.00	0.20	6,227.00	2,597.14	4,287.25	4,024.42	0.00	0.00	0.00
9,800.00	90.00	0.20	6,227.00	2,697.14	4,287.60	4,117.14	0.00	0.00	0.00
9,900.00	90.00	0.20	6,227.00	2,797.14	4,287.95	4,209.86	0.00	0.00	0.00
10,000.00	90.00	0.20	6,227.00	2,897.14	4,288.30	4,302.58	0.00	0.00	0.00
10,100.00	90.00	0.20	6,227.00	2,997.14	4,288.65	4,395.30	0.00	0.00	0.00
10,200.00	90.00	0.20	6,227.00	3,097.14	4,289.00	4,488.02	0.00	0.00	0.00
10,300.00	90.00	0.20	6,227.00	3,197.13	4,289.35	4,580.74	0.00	0.00	0.00
10,400.00	90.00	0.20	6,227.00	3,297.13	4,289.70	4,673.46	0.00	0.00	0.00
10,500.00	90.00	0.20	6,227.00	3,397.13	4,290.05	4,766.18	0.00	0.00	0.00
10,600.00	90.00	0.20	6,227.00	3,497.13	4,290.40	4,858.90	0.00	0.00	0.00
10,700.00	90.00	0.20	6,227.00	3,597.13	4,290.75	4,951.62	0.00	0.00	0.00
10,800.00	90.00	0.20	6,227.00	3,697.13	4,291.10	5,044.34	0.00	0.00	0.00
10,900.00	90.00	0.20	6,227.00	3,797.13	4,291.45	5,137.06	0.00	0.00	0.00
11,000.00	90.00	0.20	6,227.00	3,897.13	4,291.80	5,229.78	0.00	0.00	0.00
11,100.00	90.00	0.20	6,227.00	3,997.13	4,292.15	5,322.50	0.00	0.00	0.00
11,200.00	90.00	0.20	6,227.00	4,097.13	4,292.50	5,415.22	0.00	0.00	0.00
11,300.00	90.00	0.20	6,227.00	4,197.13	4,292.85	5,507.94	0.00	0.00	0.00
11,400.00	90.00	0.20	6,227.00	4,297.13	4,293.20	5,600.66	0.00	0.00	0.00
11,500.00	90.00	0.20	6,227.00	4,397.13	4,293.55	5,693.38	0.00	0.00	0.00
11,600.00	90.00	0.20	6,227.00	4,497.13	4,293.90	5,786.10	0.00	0.00	0.00
11,700.00	90.00	0.20	6,227.00	4,597.13	4,294.25	5,878.82	0.00	0.00	0.00

Civitas Resources

Planning Report

Database:	EDM	Local Co-ordinate Reference:	Well STATE NORTH PLATTE F-36 FED 25N-20-08
Company:	BONANZA CREEK ENERGY	TVD Reference:	KB 25' @ 4569.00usft
Project:	WELD COUNTY	MD Reference:	KB 25' @ 4569.00usft
Site:	SEC 36-T5N-R63W	North Reference:	True
Well:	STATE NORTH PLATTE F-36 FED 25N-20-08	Survey Calculation Method:	Minimum Curvature
Wellbore:	OWB		
Design:	PROPOSAL 1		

Planned Survey									
Measured Depth (usft)	Inclination (°)	Azimuth (°)	Vertical Depth (usft)	+N/-S (usft)	+E/-W (usft)	Vertical Section (usft)	Dogleg Rate (°/100ft)	Build Rate (°/100ft)	Turn Rate (°/100ft)
11,800.00	90.00	0.20	6,227.00	4,697.13	4,294.60	5,971.54	0.00	0.00	0.00
11,900.00	90.00	0.20	6,227.00	4,797.13	4,294.94	6,064.26	0.00	0.00	0.00
12,000.00	90.00	0.20	6,227.00	4,897.12	4,295.29	6,156.98	0.00	0.00	0.00
12,100.00	90.00	0.20	6,227.00	4,997.12	4,295.64	6,249.70	0.00	0.00	0.00
12,200.00	90.00	0.20	6,227.00	5,097.12	4,295.99	6,342.42	0.00	0.00	0.00
12,300.00	90.00	0.20	6,227.00	5,197.12	4,296.34	6,435.14	0.00	0.00	0.00
12,400.00	90.00	0.20	6,227.00	5,297.12	4,296.69	6,527.86	0.00	0.00	0.00
12,500.00	90.00	0.20	6,227.00	5,397.12	4,297.04	6,620.58	0.00	0.00	0.00
12,600.00	90.00	0.20	6,227.00	5,497.12	4,297.39	6,713.30	0.00	0.00	0.00
12,700.00	90.00	0.20	6,227.00	5,597.12	4,297.74	6,806.02	0.00	0.00	0.00
12,800.00	90.00	0.20	6,227.00	5,697.12	4,298.09	6,898.74	0.00	0.00	0.00
12,900.00	90.00	0.20	6,227.00	5,797.12	4,298.44	6,991.46	0.00	0.00	0.00
13,000.00	90.00	0.20	6,227.00	5,897.12	4,298.79	7,084.18	0.00	0.00	0.00
13,100.00	90.00	0.20	6,227.00	5,997.12	4,299.14	7,176.90	0.00	0.00	0.00
13,200.00	90.00	0.20	6,227.00	6,097.12	4,299.49	7,269.62	0.00	0.00	0.00
13,300.00	90.00	0.20	6,227.00	6,197.12	4,299.84	7,362.34	0.00	0.00	0.00
13,400.00	90.00	0.20	6,227.00	6,297.12	4,300.19	7,455.06	0.00	0.00	0.00
13,500.00	90.00	0.20	6,227.00	6,397.12	4,300.54	7,547.78	0.00	0.00	0.00
13,600.00	90.00	0.20	6,227.00	6,497.11	4,300.89	7,640.49	0.00	0.00	0.00
13,700.00	90.00	0.20	6,227.00	6,597.11	4,301.24	7,733.21	0.00	0.00	0.00
13,800.00	90.00	0.20	6,227.00	6,697.11	4,301.59	7,825.93	0.00	0.00	0.00
13,900.00	90.00	0.20	6,227.00	6,797.11	4,301.94	7,918.65	0.00	0.00	0.00
14,000.00	90.00	0.20	6,227.00	6,897.11	4,302.29	8,011.37	0.00	0.00	0.00
14,100.00	90.00	0.20	6,227.00	6,997.11	4,302.64	8,104.09	0.00	0.00	0.00
14,200.00	90.00	0.20	6,227.00	7,097.11	4,302.99	8,196.81	0.00	0.00	0.00
14,300.00	90.00	0.20	6,227.00	7,197.11	4,303.34	8,289.53	0.00	0.00	0.00
14,400.00	90.00	0.20	6,227.00	7,297.11	4,303.69	8,382.25	0.00	0.00	0.00
14,500.00	90.00	0.20	6,227.00	7,397.11	4,304.04	8,474.97	0.00	0.00	0.00
14,600.00	90.00	0.20	6,227.00	7,497.11	4,304.39	8,567.69	0.00	0.00	0.00
14,700.00	90.00	0.20	6,227.00	7,597.11	4,304.74	8,660.41	0.00	0.00	0.00
14,800.00	90.00	0.20	6,227.00	7,697.11	4,305.09	8,753.13	0.00	0.00	0.00
14,900.00	90.00	0.20	6,227.00	7,797.11	4,305.44	8,845.85	0.00	0.00	0.00
15,000.00	90.00	0.20	6,227.00	7,897.11	4,305.79	8,938.57	0.00	0.00	0.00
15,100.00	90.00	0.20	6,227.00	7,997.11	4,306.14	9,031.29	0.00	0.00	0.00
15,200.00	90.00	0.20	6,227.00	8,097.10	4,306.49	9,124.01	0.00	0.00	0.00
15,300.00	90.00	0.20	6,227.00	8,197.10	4,306.84	9,216.73	0.00	0.00	0.00
15,400.00	90.00	0.20	6,227.00	8,297.10	4,307.19	9,309.45	0.00	0.00	0.00
15,500.00	90.00	0.20	6,227.00	8,397.10	4,307.54	9,402.17	0.00	0.00	0.00
15,600.00	90.00	0.20	6,227.00	8,497.10	4,307.89	9,494.89	0.00	0.00	0.00
15,700.00	90.00	0.20	6,227.00	8,597.10	4,308.24	9,587.61	0.00	0.00	0.00
15,800.00	90.00	0.20	6,227.00	8,697.10	4,308.59	9,680.33	0.00	0.00	0.00
15,900.00	90.00	0.20	6,227.00	8,797.10	4,308.94	9,773.05	0.00	0.00	0.00
16,000.00	90.00	0.20	6,227.00	8,897.10	4,309.29	9,865.77	0.00	0.00	0.00
16,100.00	90.00	0.20	6,227.00	8,997.10	4,309.64	9,958.49	0.00	0.00	0.00
16,200.00	90.00	0.20	6,227.00	9,097.10	4,309.99	10,051.21	0.00	0.00	0.00
16,300.00	90.00	0.20	6,227.00	9,197.10	4,310.34	10,143.93	0.00	0.00	0.00
16,400.00	90.00	0.20	6,227.00	9,297.10	4,310.68	10,236.65	0.00	0.00	0.00
16,500.00	90.00	0.20	6,227.00	9,397.10	4,311.03	10,329.37	0.00	0.00	0.00
16,600.00	90.00	0.20	6,227.00	9,497.10	4,311.38	10,422.09	0.00	0.00	0.00
16,700.00	90.00	0.20	6,227.00	9,597.10	4,311.73	10,514.81	0.00	0.00	0.00
16,800.00	90.00	0.20	6,227.00	9,697.10	4,312.08	10,607.53	0.00	0.00	0.00
16,900.00	90.00	0.20	6,227.00	9,797.09	4,312.43	10,700.25	0.00	0.00	0.00
17,000.00	90.00	0.20	6,227.00	9,897.09	4,312.78	10,792.97	0.00	0.00	0.00

Civitas Resources

Planning Report

Database:	EDM	Local Co-ordinate Reference:	Well STATE NORTH PLATTE F-36 FED 25N-20-08
Company:	BONANZA CREEK ENERGY	TVD Reference:	KB 25' @ 4569.00usft
Project:	WELD COUNTY	MD Reference:	KB 25' @ 4569.00usft
Site:	SEC 36-T5N-R63W	North Reference:	True
Well:	STATE NORTH PLATTE F-36 FED 25N-20-08	Survey Calculation Method:	Minimum Curvature
Wellbore:	OWB		
Design:	PROPOSAL 1		

Planned Survey									
Measured Depth (usft)	Inclination (°)	Azimuth (°)	Vertical Depth (usft)	+N/-S (usft)	+E/-W (usft)	Vertical Section (usft)	Dogleg Rate (°/100ft)	Build Rate (°/100ft)	Turn Rate (°/100ft)
17,100.00	90.00	0.20	6,227.00	9,997.09	4,313.13	10,885.69	0.00	0.00	0.00
17,200.00	90.00	0.20	6,227.00	10,097.09	4,313.48	10,978.41	0.00	0.00	0.00
17,300.00	90.00	0.20	6,227.00	10,197.09	4,313.83	11,071.13	0.00	0.00	0.00
17,400.00	90.00	0.20	6,227.00	10,297.09	4,314.18	11,163.85	0.00	0.00	0.00
17,500.00	90.00	0.20	6,227.00	10,397.09	4,314.53	11,256.57	0.00	0.00	0.00
17,600.00	90.00	0.20	6,227.00	10,497.09	4,314.88	11,349.28	0.00	0.00	0.00
17,677.76	90.00	0.20	6,227.00	10,574.85	4,315.15	11,421.38	0.00	0.00	0.00
TD at 17677.76									

Design Targets									
Target Name - hit/miss target - Shape	Dip Angle (°)	Dip Dir. (°)	TVD (usft)	+N/-S (usft)	+E/-W (usft)	Northing (usft)	Easting (usft)	Latitude	Longitude
LP-SNP F-36 FED 25N-08 - plan hits target center - Point	0.00	0.00	6,227.00	938.11	4,281.45	1,377,633.78	3,313,122.33	40.364560°N	104.376282°W
PBHL-SNP F-36 FED 25N-08 - plan hits target center - Point	0.00	0.00	6,227.00	10,574.85	4,315.15	1,387,269.79	3,313,035.59	40.391012°N	104.376155°W

Formations						
Measured Depth (usft)	Vertical Depth (usft)	Name	Lithology	Dip (°)	Dip Direction (°)	
24.00	24.00	Alluvium				
84.00	84.00	Laramie-Fox Hills Formation				
187.01	187.00	Pierre Formation				
367.39	367.00	Upper Pierre aquifer				
1,412.43	1,367.00	Pierre Formation				
3,889.15	3,307.00	Larimer ("Parkman") sandstone				
4,282.21	3,607.00	Pierre Formation				
4,937.32	4,107.00	Terry ("Sussex") sandstone				
5,042.14	4,187.00	Pierre Formation				
5,690.70	4,682.00	Hygiene ("Shannon") sandstone				
5,867.58	4,817.00	Pierre Formation				
7,606.58	6,107.00	Sharon Springs Member				
8,040.96	6,227.00	Niobrara Formation				

Civitas Resources

Planning Report

Database:	EDM	Local Co-ordinate Reference:	Well STATE NORTH PLATTE F-36 FED 25N-20-08
Company:	BONANZA CREEK ENERGY	TVD Reference:	KB 25' @ 4569.00usft
Project:	WELD COUNTY	MD Reference:	KB 25' @ 4569.00usft
Site:	SEC 36-T5N-R63W	North Reference:	True
Well:	STATE NORTH PLATTE F-36 FED 25N-20-08	Survey Calculation Method:	Minimum Curvature
Wellbore:	OWB		
Design:	PROPOSAL 1		

Plan Annotations				
Measured Depth (usft)	Vertical Depth (usft)	Local Coordinates		Comment
		+N/-S (usft)	+E/-W (usft)	
100.00	100.00	0.00	0.00	Start Build 2.00
2,112.50	1,951.01	63.10	675.35	Start 5064.21 hold at 2112.50 MD
7,176.71	5,816.17	367.48	3,933.28	Start DLS 10.00 TFO -85.77
8,040.96	6,227.00	938.11	4,281.45	Start 9636.80 hold at 8040.96 MD
17,677.76	6,227.00	10,574.85	4,315.15	TD at 17677.76