

# **BONANZA CREEK ENERGY**

**WELD COUNTY**

**SEC 36-T5N-R63W**

**STATE NORTH PLATTE F-36 FED 25N-20-07**

**OWB**

**Plan: PROPOSAL 1**

## **Standard Planning Report**

**03 January, 2024**

Project: WELD COUNTY  
Site: SEC 36-T5N-R63W  
Well: STATE NORTH PLATTE F-36 FED 25N-20-07  
Wellbore: OWB  
Design: PROPOSAL 1

PROJECT DETAILS: WELD COUNTY  
Geodetic System: US State Plane 1983  
Datum: North American Datum 1983  
Ellipsoid: GRS 1980  
Zone: Colorado Northern Zone  
System Datum: Mean Sea Level



Azimuths to True North  
Magnetic North: 7.49°

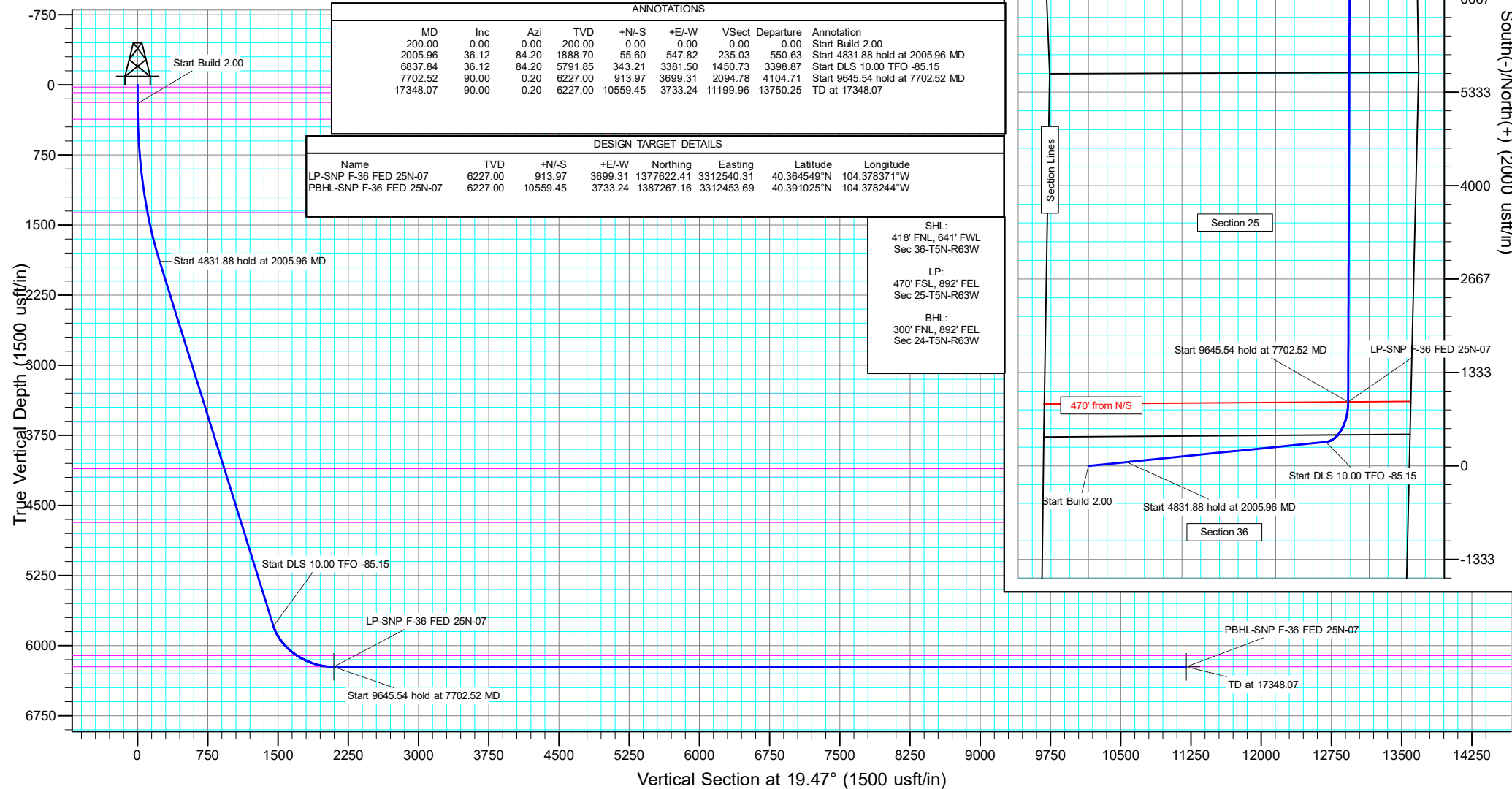
Magnetic Field  
Strength: 51814.5nT  
Dip Angle: 66.61°  
Date: 12/20/2022  
Model: IGRF2020

WELL DETAILS: STATE NORTH PLATTE F-36 FED 25N-20-07

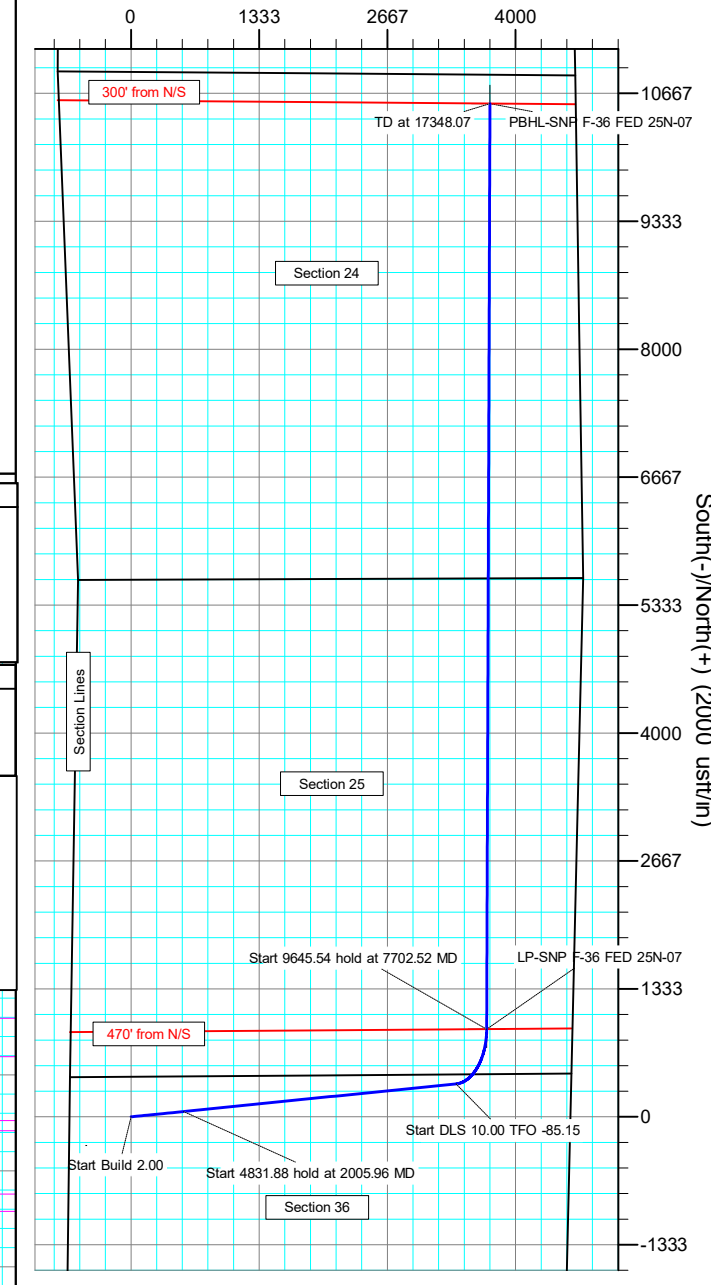
+N/-S	+E/-W	Northing	Easting	Latitude	Longitude	Slot
0.00	0.00	1376662.31	3308852.87	40.362041°N	104.391646°W	

SECTION DETAILS

Sec	MD	Inc	Azi	TVD	+N/-S	+E/-W	Dleg	TFace	VSect	Target
1	0.00	0.00	0.00	0.00	0.00	0.00	0.00	0.00	0.00	
2	200.00	0.00	0.00	200.00	0.00	0.00	0.00	0.00	0.00	
3	2005.96	36.12	84.20	1888.70	55.60	547.82	2.00	84.20	235.03	
4	6837.84	36.12	84.20	5791.85	343.21	3381.50	0.00	0.00	1450.73	
5	7702.52	90.00	0.20	6227.00	913.97	3699.31	10.00	-85.15	2094.78	LP-SNP F-36 FED 25N-07
6	17348.07	90.00	0.20	6227.00	10559.45	3733.24	0.00	0.00	11199.96	PBHL-SNP F-36 FED 25N-07



West(-)/East(+) (2000 usft/in)



# Civitas Resources

## Planning Report

<b>Database:</b>	EDM	<b>Local Co-ordinate Reference:</b>	Well STATE NORTH PLATTE F-36 FED 25N-20-07
<b>Company:</b>	BONANZA CREEK ENERGY	<b>TVD Reference:</b>	KB 25' @ 4569.00usft
<b>Project:</b>	WELD COUNTY	<b>MD Reference:</b>	KB 25' @ 4569.00usft
<b>Site:</b>	SEC 36-T5N-R63W	<b>North Reference:</b>	True
<b>Well:</b>	STATE NORTH PLATTE F-36 FED 25N-20-07	<b>Survey Calculation Method:</b>	Minimum Curvature
<b>Wellbore:</b>	OWB		
<b>Design:</b>	PROPOSAL 1		

<b>Project</b>	WELD COUNTY		
<b>Map System:</b>	US State Plane 1983	<b>System Datum:</b>	Mean Sea Level
<b>Geo Datum:</b>	North American Datum 1983		
<b>Map Zone:</b>	Colorado Northern Zone		Using geodetic scale factor

<b>Site</b>	SEC 36-T5N-R63W		
<b>Site Position:</b>		<b>Northing:</b>	1,377,067.46 usft
<b>From:</b>	Lat/Long	<b>Easting:</b>	3,308,212.41 usft
<b>Position Uncertainty:</b>	0.00 usft	<b>Slot Radius:</b>	13.200 in
		<b>Latitude:</b>	40.363175°N
		<b>Longitude:</b>	104.393926°W
		<b>Grid Convergence:</b>	0.71 °

Well	STATE NORTH PLATTE F-36 FED 25N-20-07					
Well Position	+N/-S	-413.12 usft	Northing:	1,376,662.31 usft	Latitude:	40.362041°N
	+E/-W	635.39 usft	Easting:	3,308,852.87 usft	Longitude:	104.391646°W
Position Uncertainty		0.00 usft	Wellhead Elevation:		Ground Level:	4,544.00 usft

<b>Wellbore</b>	OWB				
<b>Magnetics</b>	<b>Model Name</b>	<b>Sample Date</b>	<b>Declination (°)</b>	<b>Dip Angle (°)</b>	<b>Field Strength (nT)</b>
	IGRF2020	12/20/2022	7.49	66.61	51,814.46152469

<b>Design</b>	PROPOSAL 1			
<b>Audit Notes:</b>				
<b>Version:</b>	<b>Phase:</b>	PROTOTYPE	<b>Tie On Depth:</b>	0.00
<b>Vertical Section:</b>	<b>Depth From (TVD) (usft)</b>	<b>+N/-S (usft)</b>	<b>+E/-W (usft)</b>	<b>Direction (°)</b>
	0.00	0.00	0.00	19.47

<b>Plan Survey Tool Program</b>	<b>Date</b>	1/2/2024		
<b>Depth From (usft)</b>	<b>Depth To (usft)</b>	<b>Survey (Wellbore)</b>	<b>Tool Name</b>	<b>Remarks</b>
1	0.00	17,348.07	PROPOSAL 1 (OWB)	MWD OWSG
				OWSG MWD - Standard

<b>Plan Sections</b>										
<b>Measured Depth (usft)</b>	<b>Inclination (°)</b>	<b>Azimuth (°)</b>	<b>Vertical Depth (usft)</b>	<b>+N/-S (usft)</b>	<b>+E/-W (usft)</b>	<b>Dogleg Rate (°/100ft)</b>	<b>Build Rate (°/100ft)</b>	<b>Turn Rate (°/100ft)</b>	<b>TFO (°)</b>	<b>Target</b>
0.00	0.00	0.00	0.00	0.00	0.00	0.00	0.00	0.00	0.00	
200.00	0.00	0.00	200.00	0.00	0.00	0.00	0.00	0.00	0.00	
2,005.96	36.12	84.20	1,888.70	55.60	547.82	2.00	2.00	0.00	84.20	
6,837.84	36.12	84.20	5,791.85	343.21	3,381.50	0.00	0.00	0.00	0.00	
7,702.53	90.00	0.20	6,227.00	913.97	3,699.31	10.00	6.23	-9.71	-85.15	LP-SNP F-36 FED 25
17,348.07	90.00	0.20	6,227.00	10,559.45	3,733.24	0.00	0.00	0.00	0.00	PBHL-SNP F-36 FED

# Civitas Resources

## Planning Report

<b>Database:</b>	EDM	<b>Local Co-ordinate Reference:</b>	Well STATE NORTH PLATTE F-36 FED 25N-20-07
<b>Company:</b>	BONANZA CREEK ENERGY	<b>TVD Reference:</b>	KB 25' @ 4569.00usft
<b>Project:</b>	WELD COUNTY	<b>MD Reference:</b>	KB 25' @ 4569.00usft
<b>Site:</b>	SEC 36-T5N-R63W	<b>North Reference:</b>	True
<b>Well:</b>	STATE NORTH PLATTE F-36 FED 25N-20-07	<b>Survey Calculation Method:</b>	Minimum Curvature
<b>Wellbore:</b>	OWB		
<b>Design:</b>	PROPOSAL 1		

Planned Survey									
Measured Depth (usft)	Inclination (°)	Azimuth (°)	Vertical Depth (usft)	+N/-S (usft)	+E/-W (usft)	Vertical Section (usft)	Dogleg Rate (°/100ft)	Build Rate (°/100ft)	Turn Rate (°/100ft)
0.00	0.00	0.00	0.00	0.00	0.00	0.00	0.00	0.00	0.00
24.00	0.00	0.00	24.00	0.00	0.00	0.00	0.00	0.00	0.00
Alluvium									
84.00	0.00	0.00	84.00	0.00	0.00	0.00	0.00	0.00	0.00
Laramie-Fox Hills Formation									
100.00	0.00	0.00	100.00	0.00	0.00	0.00	0.00	0.00	0.00
187.00	0.00	0.00	187.00	0.00	0.00	0.00	0.00	0.00	0.00
Pierre Formation									
200.00	0.00	0.00	200.00	0.00	0.00	0.00	0.00	0.00	0.00
Start Build 2.00									
300.00	2.00	84.20	299.98	0.18	1.74	0.74	2.00	2.00	0.00
367.09	3.34	84.20	367.00	0.49	4.85	2.08	2.00	2.00	0.00
Upper Pierre aquifer									
400.00	4.00	84.20	399.84	0.70	6.94	2.98	2.00	2.00	0.00
500.00	6.00	84.20	499.45	1.58	15.61	6.70	2.00	2.00	0.00
600.00	8.00	84.20	598.70	2.82	27.74	11.90	2.00	2.00	0.00
700.00	10.00	84.20	697.47	4.39	43.30	18.58	2.00	2.00	0.00
800.00	12.00	84.20	795.62	6.32	62.28	26.72	2.00	2.00	0.00
900.00	14.00	84.20	893.06	8.59	84.66	36.32	2.00	2.00	0.00
1,000.00	16.00	84.20	989.64	11.21	110.41	47.37	2.00	2.00	0.00
1,100.00	18.00	84.20	1,085.27	14.16	139.50	59.85	2.00	2.00	0.00
1,200.00	20.00	84.20	1,179.82	17.45	171.89	73.74	2.00	2.00	0.00
1,300.00	22.00	84.20	1,273.17	21.06	207.54	89.04	2.00	2.00	0.00
1,400.00	24.00	84.20	1,365.21	25.01	246.41	105.71	2.00	2.00	0.00
1,401.95	24.04	84.20	1,367.00	25.09	247.20	106.05	2.00	2.00	0.00
Pierre Formation									
1,500.00	26.00	84.20	1,455.84	29.28	288.45	123.75	2.00	2.00	0.00
1,600.00	28.00	84.20	1,544.94	33.86	333.62	143.13	2.00	2.00	0.00
1,700.00	30.00	84.20	1,632.39	38.76	381.85	163.82	2.00	2.00	0.00
1,800.00	32.00	84.20	1,718.11	43.96	433.09	185.80	2.00	2.00	0.00
1,900.00	34.00	84.20	1,801.97	49.46	487.27	209.05	2.00	2.00	0.00
2,005.96	36.12	84.20	1,888.70	55.60	547.82	235.03	2.00	2.00	0.00
Start 4831.88 hold at 2005.96 MD									
2,100.00	36.12	84.20	1,964.66	61.20	602.97	258.69	0.00	0.00	0.00
2,200.00	36.12	84.20	2,045.44	67.15	661.62	283.85	0.00	0.00	0.00
2,300.00	36.12	84.20	2,126.22	73.10	720.26	309.01	0.00	0.00	0.00
2,400.00	36.12	84.20	2,207.00	79.06	778.91	334.17	0.00	0.00	0.00
2,500.00	36.12	84.20	2,287.78	85.01	837.55	359.33	0.00	0.00	0.00
2,600.00	36.12	84.20	2,368.56	90.96	896.20	384.49	0.00	0.00	0.00
2,700.00	36.12	84.20	2,449.34	96.91	954.84	409.65	0.00	0.00	0.00
2,800.00	36.12	84.20	2,530.12	102.87	1,013.49	434.81	0.00	0.00	0.00
2,900.00	36.12	84.20	2,610.90	108.82	1,072.13	459.97	0.00	0.00	0.00
3,000.00	36.12	84.20	2,691.68	114.77	1,130.78	485.13	0.00	0.00	0.00
3,100.00	36.12	84.20	2,772.46	120.72	1,189.43	510.29	0.00	0.00	0.00
3,200.00	36.12	84.20	2,853.23	126.68	1,248.07	535.45	0.00	0.00	0.00
3,300.00	36.12	84.20	2,934.01	132.63	1,306.72	560.61	0.00	0.00	0.00
3,400.00	36.12	84.20	3,014.79	138.58	1,365.36	585.77	0.00	0.00	0.00
3,500.00	36.12	84.20	3,095.57	144.53	1,424.01	610.93	0.00	0.00	0.00
3,600.00	36.12	84.20	3,176.35	150.49	1,482.65	636.09	0.00	0.00	0.00
3,700.00	36.12	84.20	3,257.13	156.44	1,541.30	661.25	0.00	0.00	0.00
3,761.74	36.12	84.20	3,307.00	160.11	1,577.50	676.78	0.00	0.00	0.00
Larimer ("Parkman") sandstone									

# Civitas Resources

## Planning Report

<b>Database:</b>	EDM	<b>Local Co-ordinate Reference:</b>	Well STATE NORTH PLATTE F-36 FED 25N-20-07
<b>Company:</b>	BONANZA CREEK ENERGY	<b>TVD Reference:</b>	KB 25' @ 4569.00usft
<b>Project:</b>	WELD COUNTY	<b>MD Reference:</b>	KB 25' @ 4569.00usft
<b>Site:</b>	SEC 36-T5N-R63W	<b>North Reference:</b>	True
<b>Well:</b>	STATE NORTH PLATTE F-36 FED 25N-20-07	<b>Survey Calculation Method:</b>	Minimum Curvature
<b>Wellbore:</b>	OWB		
<b>Design:</b>	PROPOSAL 1		

Planned Survey									
Measured Depth (usft)	Inclination (°)	Azimuth (°)	Vertical Depth (usft)	+N/-S (usft)	+E/-W (usft)	Vertical Section (usft)	Dogleg Rate (°/100ft)	Build Rate (°/100ft)	Turn Rate (°/100ft)
3,800.00	36.12	84.20	3,337.91	162.39	1,599.94	686.41	0.00	0.00	0.00
3,900.00	36.12	84.20	3,418.69	168.34	1,658.59	711.57	0.00	0.00	0.00
4,000.00	36.12	84.20	3,499.47	174.30	1,717.23	736.73	0.00	0.00	0.00
4,100.00	36.12	84.20	3,580.25	180.25	1,775.88	761.89	0.00	0.00	0.00
4,133.12	36.12	84.20	3,607.00	182.22	1,795.30	770.22	0.00	0.00	0.00
Pierre Formation									
4,200.00	36.12	84.20	3,661.03	186.20	1,834.53	787.05	0.00	0.00	0.00
4,300.00	36.12	84.20	3,741.81	192.15	1,893.17	812.21	0.00	0.00	0.00
4,400.00	36.12	84.20	3,822.58	198.10	1,951.82	837.37	0.00	0.00	0.00
4,500.00	36.12	84.20	3,903.36	204.06	2,010.46	862.53	0.00	0.00	0.00
4,600.00	36.12	84.20	3,984.14	210.01	2,069.11	887.69	0.00	0.00	0.00
4,700.00	36.12	84.20	4,064.92	215.96	2,127.75	912.85	0.00	0.00	0.00
4,752.09	36.12	84.20	4,107.00	219.06	2,158.30	925.95	0.00	0.00	0.00
Terry ("Sussex") sandstone									
4,800.00	36.12	84.20	4,145.70	221.91	2,186.40	938.01	0.00	0.00	0.00
4,851.13	36.12	84.20	4,187.00	224.96	2,216.38	950.87	0.00	0.00	0.00
Pierre Formation									
4,900.00	36.12	84.20	4,226.48	227.87	2,245.04	963.17	0.00	0.00	0.00
5,000.00	36.12	84.20	4,307.26	233.82	2,303.69	988.33	0.00	0.00	0.00
5,100.00	36.12	84.20	4,388.04	239.77	2,362.34	1,013.49	0.00	0.00	0.00
5,200.00	36.12	84.20	4,468.82	245.72	2,420.98	1,038.65	0.00	0.00	0.00
5,300.00	36.12	84.20	4,549.60	251.68	2,479.63	1,063.81	0.00	0.00	0.00
5,400.00	36.12	84.20	4,630.38	257.63	2,538.27	1,088.97	0.00	0.00	0.00
5,463.91	36.12	84.20	4,682.00	261.43	2,575.75	1,105.05	0.00	0.00	0.00
Hygiene ("Shannon") sandstone									
5,500.00	36.12	84.20	4,711.16	263.58	2,596.92	1,114.13	0.00	0.00	0.00
5,600.00	36.12	84.20	4,791.93	269.53	2,655.56	1,139.29	0.00	0.00	0.00
5,631.03	36.12	84.20	4,817.00	271.38	2,673.76	1,147.10	0.00	0.00	0.00
Pierre Formation									
5,700.00	36.12	84.20	4,872.71	275.49	2,714.21	1,164.45	0.00	0.00	0.00
5,800.00	36.12	84.20	4,953.49	281.44	2,772.85	1,189.61	0.00	0.00	0.00
5,900.00	36.12	84.20	5,034.27	287.39	2,831.50	1,214.77	0.00	0.00	0.00
6,000.00	36.12	84.20	5,115.05	293.34	2,890.14	1,239.93	0.00	0.00	0.00
6,100.00	36.12	84.20	5,195.83	299.29	2,948.79	1,265.09	0.00	0.00	0.00
6,200.00	36.12	84.20	5,276.61	305.25	3,007.44	1,290.25	0.00	0.00	0.00
6,300.00	36.12	84.20	5,357.39	311.20	3,066.08	1,315.41	0.00	0.00	0.00
6,400.00	36.12	84.20	5,438.17	317.15	3,124.73	1,340.57	0.00	0.00	0.00
6,500.00	36.12	84.20	5,518.95	323.10	3,183.37	1,365.73	0.00	0.00	0.00
6,600.00	36.12	84.20	5,599.73	329.06	3,242.02	1,390.89	0.00	0.00	0.00
6,700.00	36.12	84.20	5,680.51	335.01	3,300.66	1,416.05	0.00	0.00	0.00
6,800.00	36.12	84.20	5,761.29	340.96	3,359.31	1,441.21	0.00	0.00	0.00
6,837.84	36.12	84.20	5,791.85	343.21	3,381.50	1,450.73	0.00	0.00	0.00
Start DLS 10.00 TFO -85.15									
6,850.00	36.24	82.15	5,801.67	344.07	3,388.63	1,453.91	10.00	0.99	-16.86
6,900.00	37.09	73.90	5,841.80	350.27	3,417.77	1,469.47	10.00	1.71	-16.51
6,950.00	38.49	66.06	5,881.33	360.77	3,446.50	1,488.95	10.00	2.80	-15.67
7,000.00	40.38	58.77	5,919.97	375.49	3,474.59	1,512.19	10.00	3.78	-14.59
7,050.00	42.69	52.08	5,957.41	394.32	3,501.83	1,539.02	10.00	4.62	-13.38
7,100.00	45.36	45.99	5,993.37	417.11	3,528.01	1,569.24	10.00	5.33	-12.18
7,150.00	48.32	40.46	6,027.59	443.70	3,552.93	1,602.61	10.00	5.92	-11.06
7,200.00	51.52	35.43	6,059.79	473.87	3,576.41	1,638.88	10.00	6.40	-10.05
7,250.00	54.91	30.85	6,089.73	507.40	3,598.26	1,677.78	10.00	6.79	-9.17

# Civitas Resources

## Planning Report

<b>Database:</b>	EDM	<b>Local Co-ordinate Reference:</b>	Well STATE NORTH PLATTE F-36 FED 25N-20-07
<b>Company:</b>	BONANZA CREEK ENERGY	<b>TVD Reference:</b>	KB 25' @ 4569.00usft
<b>Project:</b>	WELD COUNTY	<b>MD Reference:</b>	KB 25' @ 4569.00usft
<b>Site:</b>	SEC 36-T5N-R63W	<b>North Reference:</b>	True
<b>Well:</b>	STATE NORTH PLATTE F-36 FED 25N-20-07	<b>Survey Calculation Method:</b>	Minimum Curvature
<b>Wellbore:</b>	OWB		
<b>Design:</b>	PROPOSAL 1		

Planned Survey									
Measured Depth (usft)	Inclination (°)	Azimuth (°)	Vertical Depth (usft)	+N/-S (usft)	+E/-W (usft)	Vertical Section (usft)	Dogleg Rate (°/100ft)	Build Rate (°/100ft)	Turn Rate (°/100ft)
7,280.88	57.09	28.21	6,107.00	529.67	3,610.87	1,702.98	10.00	7.06	-8.55
Sharon Springs Member									
7,300.00	58.47	26.64	6,117.20	544.03	3,618.32	1,719.00	10.00	7.20	-8.21
7,350.00	62.15	22.75	6,141.96	583.49	3,636.43	1,762.24	10.00	7.36	-7.79
7,400.00	65.94	19.11	6,163.85	625.47	3,652.46	1,807.16	10.00	7.57	-7.27
7,450.00	69.80	15.69	6,182.69	669.65	3,666.29	1,853.43	10.00	7.73	-6.85
7,500.00	73.73	12.43	6,198.33	715.71	3,677.81	1,900.69	10.00	7.86	-6.51
7,550.00	77.71	9.30	6,210.67	763.28	3,686.93	1,948.58	10.00	7.95	-6.26
7,600.00	81.72	6.27	6,219.60	812.01	3,693.58	1,996.74	10.00	8.02	-6.07
7,650.00	85.75	3.29	6,225.05	861.52	3,697.71	2,044.80	10.00	8.07	-5.95
7,702.53	90.00	0.20	6,227.00	913.97	3,699.31	2,094.78	10.00	8.09	-5.88
Start 9645.54 hold at 7702.52 MD - Niobrara Formation									
7,800.00	90.00	0.20	6,227.00	1,011.44	3,699.65	2,186.79	0.00	0.00	0.00
7,900.00	90.00	0.20	6,227.00	1,111.44	3,700.01	2,281.19	0.00	0.00	0.00
8,000.00	90.00	0.20	6,227.00	1,211.44	3,700.36	2,375.59	0.00	0.00	0.00
8,100.00	90.00	0.20	6,227.00	1,311.44	3,700.71	2,469.99	0.00	0.00	0.00
8,200.00	90.00	0.20	6,227.00	1,411.44	3,701.06	2,564.38	0.00	0.00	0.00
8,300.00	90.00	0.20	6,227.00	1,511.44	3,701.41	2,658.78	0.00	0.00	0.00
8,400.00	90.00	0.20	6,227.00	1,611.44	3,701.76	2,753.18	0.00	0.00	0.00
8,500.00	90.00	0.20	6,227.00	1,711.44	3,702.12	2,847.58	0.00	0.00	0.00
8,600.00	90.00	0.20	6,227.00	1,811.44	3,702.47	2,941.98	0.00	0.00	0.00
8,700.00	90.00	0.20	6,227.00	1,911.44	3,702.82	3,036.37	0.00	0.00	0.00
8,800.00	90.00	0.20	6,227.00	2,011.44	3,703.17	3,130.77	0.00	0.00	0.00
8,900.00	90.00	0.20	6,227.00	2,111.44	3,703.52	3,225.17	0.00	0.00	0.00
9,000.00	90.00	0.20	6,227.00	2,211.44	3,703.88	3,319.57	0.00	0.00	0.00
9,100.00	90.00	0.20	6,227.00	2,311.43	3,704.23	3,413.96	0.00	0.00	0.00
9,200.00	90.00	0.20	6,227.00	2,411.43	3,704.58	3,508.36	0.00	0.00	0.00
9,300.00	90.00	0.20	6,227.00	2,511.43	3,704.93	3,602.76	0.00	0.00	0.00
9,400.00	90.00	0.20	6,227.00	2,611.43	3,705.28	3,697.16	0.00	0.00	0.00
9,500.00	90.00	0.20	6,227.00	2,711.43	3,705.63	3,791.56	0.00	0.00	0.00
9,600.00	90.00	0.20	6,227.00	2,811.43	3,705.99	3,885.95	0.00	0.00	0.00
9,700.00	90.00	0.20	6,227.00	2,911.43	3,706.34	3,980.35	0.00	0.00	0.00
9,800.00	90.00	0.20	6,227.00	3,011.43	3,706.69	4,074.75	0.00	0.00	0.00
9,900.00	90.00	0.20	6,227.00	3,111.43	3,707.04	4,169.15	0.00	0.00	0.00
10,000.00	90.00	0.20	6,227.00	3,211.43	3,707.39	4,263.54	0.00	0.00	0.00
10,100.00	90.00	0.20	6,227.00	3,311.43	3,707.75	4,357.94	0.00	0.00	0.00
10,200.00	90.00	0.20	6,227.00	3,411.43	3,708.10	4,452.34	0.00	0.00	0.00
10,300.00	90.00	0.20	6,227.00	3,511.43	3,708.45	4,546.74	0.00	0.00	0.00
10,400.00	90.00	0.20	6,227.00	3,611.43	3,708.80	4,641.14	0.00	0.00	0.00
10,500.00	90.00	0.20	6,227.00	3,711.43	3,709.15	4,735.53	0.00	0.00	0.00
10,600.00	90.00	0.20	6,227.00	3,811.43	3,709.50	4,829.93	0.00	0.00	0.00
10,700.00	90.00	0.20	6,227.00	3,911.42	3,709.86	4,924.33	0.00	0.00	0.00
10,800.00	90.00	0.20	6,227.00	4,011.42	3,710.21	5,018.73	0.00	0.00	0.00
10,900.00	90.00	0.20	6,227.00	4,111.42	3,710.56	5,113.13	0.00	0.00	0.00
11,000.00	90.00	0.20	6,227.00	4,211.42	3,710.91	5,207.52	0.00	0.00	0.00
11,100.00	90.00	0.20	6,227.00	4,311.42	3,711.26	5,301.92	0.00	0.00	0.00
11,200.00	90.00	0.20	6,227.00	4,411.42	3,711.62	5,396.32	0.00	0.00	0.00
11,300.00	90.00	0.20	6,227.00	4,511.42	3,711.97	5,490.72	0.00	0.00	0.00
11,400.00	90.00	0.20	6,227.00	4,611.42	3,712.32	5,585.11	0.00	0.00	0.00
11,500.00	90.00	0.20	6,227.00	4,711.42	3,712.67	5,679.51	0.00	0.00	0.00
11,600.00	90.00	0.20	6,227.00	4,811.42	3,713.02	5,773.91	0.00	0.00	0.00
11,700.00	90.00	0.20	6,227.00	4,911.42	3,713.37	5,868.31	0.00	0.00	0.00
11,800.00	90.00	0.20	6,227.00	5,011.42	3,713.73	5,962.71	0.00	0.00	0.00

# Civitas Resources

## Planning Report

<b>Database:</b>	EDM	<b>Local Co-ordinate Reference:</b>	Well STATE NORTH PLATTE F-36 FED 25N-20-07
<b>Company:</b>	BONANZA CREEK ENERGY	<b>TVD Reference:</b>	KB 25' @ 4569.00usft
<b>Project:</b>	WELD COUNTY	<b>MD Reference:</b>	KB 25' @ 4569.00usft
<b>Site:</b>	SEC 36-T5N-R63W	<b>North Reference:</b>	True
<b>Well:</b>	STATE NORTH PLATTE F-36 FED 25N-20-07	<b>Survey Calculation Method:</b>	Minimum Curvature
<b>Wellbore:</b>	OWB		
<b>Design:</b>	PROPOSAL 1		

Planned Survey										
Measured Depth (usft)	Inclination (°)	Azimuth (°)	Vertical Depth (usft)	+N/-S (usft)	+E/-W (usft)	Vertical Section (usft)	Dogleg Rate (°/100ft)	Build Rate (°/100ft)	Turn Rate (°/100ft)	
11,900.00	90.00	0.20	6,227.00	5,111.42	3,714.08	6,057.10	0.00	0.00	0.00	
12,000.00	90.00	0.20	6,227.00	5,211.42	3,714.43	6,151.50	0.00	0.00	0.00	
12,100.00	90.00	0.20	6,227.00	5,311.42	3,714.78	6,245.90	0.00	0.00	0.00	
12,200.00	90.00	0.20	6,227.00	5,411.42	3,715.13	6,340.30	0.00	0.00	0.00	
12,300.00	90.00	0.20	6,227.00	5,511.41	3,715.49	6,434.69	0.00	0.00	0.00	
12,400.00	90.00	0.20	6,227.00	5,611.41	3,715.84	6,529.09	0.00	0.00	0.00	
12,500.00	90.00	0.20	6,227.00	5,711.41	3,716.19	6,623.49	0.00	0.00	0.00	
12,600.00	90.00	0.20	6,227.00	5,811.41	3,716.54	6,717.89	0.00	0.00	0.00	
12,700.00	90.00	0.20	6,227.00	5,911.41	3,716.89	6,812.29	0.00	0.00	0.00	
12,800.00	90.00	0.20	6,227.00	6,011.41	3,717.24	6,906.68	0.00	0.00	0.00	
12,900.00	90.00	0.20	6,227.00	6,111.41	3,717.60	7,001.08	0.00	0.00	0.00	
13,000.00	90.00	0.20	6,227.00	6,211.41	3,717.95	7,095.48	0.00	0.00	0.00	
13,100.00	90.00	0.20	6,227.00	6,311.41	3,718.30	7,189.88	0.00	0.00	0.00	
13,200.00	90.00	0.20	6,227.00	6,411.41	3,718.65	7,284.28	0.00	0.00	0.00	
13,300.00	90.00	0.20	6,227.00	6,511.41	3,719.00	7,378.67	0.00	0.00	0.00	
13,400.00	90.00	0.20	6,227.00	6,611.41	3,719.35	7,473.07	0.00	0.00	0.00	
13,500.00	90.00	0.20	6,227.00	6,711.41	3,719.71	7,567.47	0.00	0.00	0.00	
13,600.00	90.00	0.20	6,227.00	6,811.41	3,720.06	7,661.87	0.00	0.00	0.00	
13,700.00	90.00	0.20	6,227.00	6,911.41	3,720.41	7,756.26	0.00	0.00	0.00	
13,800.00	90.00	0.20	6,227.00	7,011.41	3,720.76	7,850.66	0.00	0.00	0.00	
13,900.00	90.00	0.20	6,227.00	7,111.41	3,721.11	7,945.06	0.00	0.00	0.00	
14,000.00	90.00	0.20	6,227.00	7,211.40	3,721.47	8,039.46	0.00	0.00	0.00	
14,100.00	90.00	0.20	6,227.00	7,311.40	3,721.82	8,133.86	0.00	0.00	0.00	
14,200.00	90.00	0.20	6,227.00	7,411.40	3,722.17	8,228.25	0.00	0.00	0.00	
14,300.00	90.00	0.20	6,227.00	7,511.40	3,722.52	8,322.65	0.00	0.00	0.00	
14,400.00	90.00	0.20	6,227.00	7,611.40	3,722.87	8,417.05	0.00	0.00	0.00	
14,500.00	90.00	0.20	6,227.00	7,711.40	3,723.22	8,511.45	0.00	0.00	0.00	
14,600.00	90.00	0.20	6,227.00	7,811.40	3,723.58	8,605.84	0.00	0.00	0.00	
14,700.00	90.00	0.20	6,227.00	7,911.40	3,723.93	8,700.24	0.00	0.00	0.00	
14,800.00	90.00	0.20	6,227.00	8,011.40	3,724.28	8,794.64	0.00	0.00	0.00	
14,900.00	90.00	0.20	6,227.00	8,111.40	3,724.63	8,889.04	0.00	0.00	0.00	
15,000.00	90.00	0.20	6,227.00	8,211.40	3,724.98	8,983.44	0.00	0.00	0.00	
15,100.00	90.00	0.20	6,227.00	8,311.40	3,725.34	9,077.83	0.00	0.00	0.00	
15,200.00	90.00	0.20	6,227.00	8,411.40	3,725.69	9,172.23	0.00	0.00	0.00	
15,300.00	90.00	0.20	6,227.00	8,511.40	3,726.04	9,266.63	0.00	0.00	0.00	
15,400.00	90.00	0.20	6,227.00	8,611.40	3,726.39	9,361.03	0.00	0.00	0.00	
15,500.00	90.00	0.20	6,227.00	8,711.40	3,726.74	9,455.43	0.00	0.00	0.00	
15,600.00	90.00	0.20	6,227.00	8,811.39	3,727.09	9,549.82	0.00	0.00	0.00	
15,700.00	90.00	0.20	6,227.00	8,911.39	3,727.45	9,644.22	0.00	0.00	0.00	
15,800.00	90.00	0.20	6,227.00	9,011.39	3,727.80	9,738.62	0.00	0.00	0.00	
15,900.00	90.00	0.20	6,227.00	9,111.39	3,728.15	9,833.02	0.00	0.00	0.00	
16,000.00	90.00	0.20	6,227.00	9,211.39	3,728.50	9,927.41	0.00	0.00	0.00	
16,100.00	90.00	0.20	6,227.00	9,311.39	3,728.85	10,021.81	0.00	0.00	0.00	
16,200.00	90.00	0.20	6,227.00	9,411.39	3,729.21	10,116.21	0.00	0.00	0.00	
16,300.00	90.00	0.20	6,227.00	9,511.39	3,729.56	10,210.61	0.00	0.00	0.00	
16,400.00	90.00	0.20	6,227.00	9,611.39	3,729.91	10,305.01	0.00	0.00	0.00	
16,500.00	90.00	0.20	6,227.00	9,711.39	3,730.26	10,399.40	0.00	0.00	0.00	
16,600.00	90.00	0.20	6,227.00	9,811.39	3,730.61	10,493.80	0.00	0.00	0.00	
16,700.00	90.00	0.20	6,227.00	9,911.39	3,730.96	10,588.20	0.00	0.00	0.00	
16,800.00	90.00	0.20	6,227.00	10,011.39	3,731.32	10,682.60	0.00	0.00	0.00	
16,900.00	90.00	0.20	6,227.00	10,111.39	3,731.67	10,776.99	0.00	0.00	0.00	
17,000.00	90.00	0.20	6,227.00	10,211.39	3,732.02	10,871.39	0.00	0.00	0.00	
17,100.00	90.00	0.20	6,227.00	10,311.39	3,732.37	10,965.79	0.00	0.00	0.00	

# Civitas Resources

## Planning Report

<b>Database:</b>	EDM	<b>Local Co-ordinate Reference:</b>	Well STATE NORTH PLATTE F-36 FED 25N-20-07
<b>Company:</b>	BONANZA CREEK ENERGY	<b>TVD Reference:</b>	KB 25' @ 4569.00usft
<b>Project:</b>	WELD COUNTY	<b>MD Reference:</b>	KB 25' @ 4569.00usft
<b>Site:</b>	SEC 36-T5N-R63W	<b>North Reference:</b>	True
<b>Well:</b>	STATE NORTH PLATTE F-36 FED 25N-20-07	<b>Survey Calculation Method:</b>	Minimum Curvature
<b>Wellbore:</b>	OWB		
<b>Design:</b>	PROPOSAL 1		

Planned Survey									
Measured Depth (usft)	Inclination (°)	Azimuth (°)	Vertical Depth (usft)	+N/-S (usft)	+E/-W (usft)	Vertical Section (usft)	Dogleg Rate (°/100ft)	Build Rate (°/100ft)	Turn Rate (°/100ft)
17,200.00	90.00	0.20	6,227.00	10,411.38	3,732.72	11,060.19	0.00	0.00	0.00
17,300.00	90.00	0.20	6,227.00	10,511.38	3,733.07	11,154.59	0.00	0.00	0.00
17,348.07	90.00	0.20	6,227.00	10,559.45	3,733.24	11,199.96	0.00	0.00	0.00
TD at 17348.07									

Design Targets									
Target Name - hit/miss target - Shape	Dip Angle (°)	Dip Dir. (°)	TVD (usft)	+N/-S (usft)	+E/-W (usft)	Northing (usft)	Easting (usft)	Latitude	Longitude
LP-SNP F-36 FED 25N-1 - plan hits target center - Point	0.00	0.00	6,227.00	913.97	3,699.31	1,377,622.41	3,312,540.32	40.364549°N	104.378371°W
PBHL-SNP F-36 FED 25 - plan hits target center - Point	0.00	0.00	6,227.00	10,559.45	3,733.24	1,387,267.16	3,312,453.69	40.391025°N	104.378244°W

Formations						
Measured Depth (usft)	Vertical Depth (usft)	Name	Lithology	Dip (°)	Dip Direction (°)	
24.00	24.00	Alluvium				
84.00	84.00	Laramie-Fox Hills Formation				
187.00	187.00	Pierre Formation				
367.09	367.00	Upper Pierre aquifer				
1,401.95	1,367.00	Pierre Formation				
3,761.74	3,307.00	Larimer ("Parkman") sandstone				
4,133.12	3,607.00	Pierre Formation				
4,752.09	4,107.00	Terry ("Sussex") sandstone				
4,851.13	4,187.00	Pierre Formation				
5,463.91	4,682.00	Hygiene ("Shannon") sandstone				
5,631.03	4,817.00	Pierre Formation				
7,280.88	6,107.00	Sharon Springs Member				
7,702.53	6,227.00	Niobrara Formation				

Plan Annotations				
Measured Depth (usft)	Vertical Depth (usft)	Local Coordinates		Comment
		+N/-S (usft)	+E/-W (usft)	
200.00	200.00	0.00	0.00	Start Build 2.00
2,005.96	1,888.70	55.60	547.82	Start 4831.88 hold at 2005.96 MD
6,837.84	5,791.85	343.21	3,381.50	Start DLS 10.00 TFO -85.15
7,702.53	6,227.00	913.97	3,699.31	Start 9645.54 hold at 7702.52 MD
17,348.07	6,227.00	10,559.45	3,733.24	TD at 17348.07