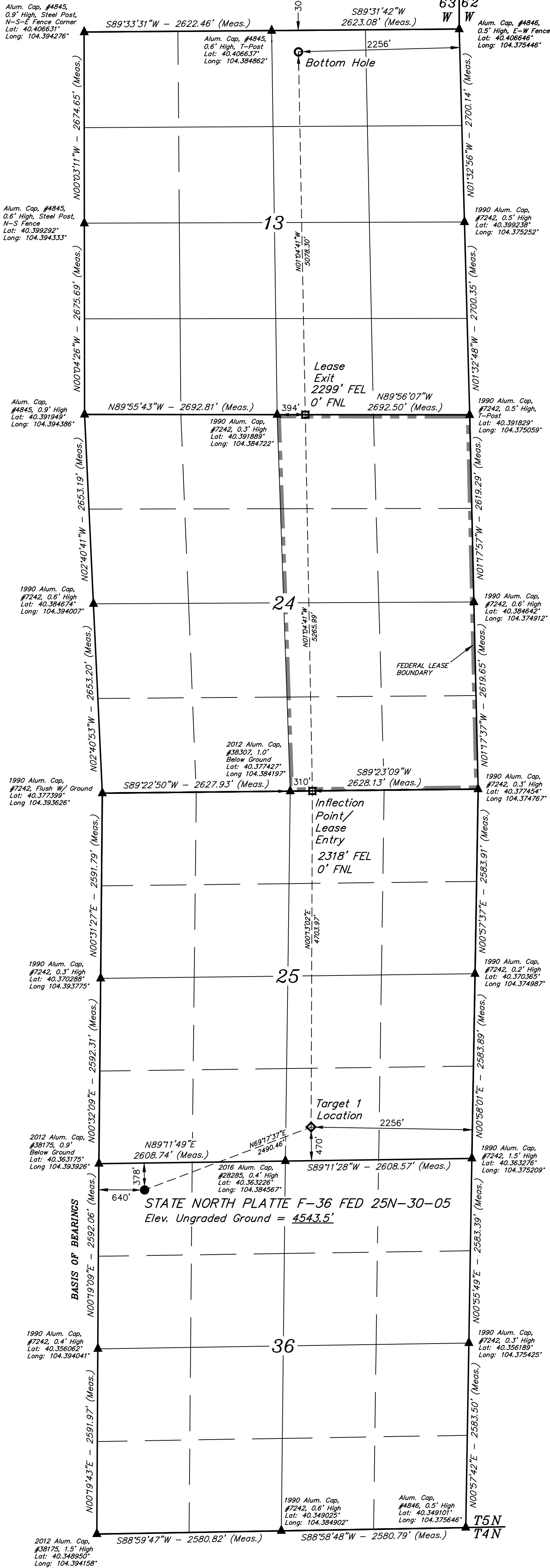


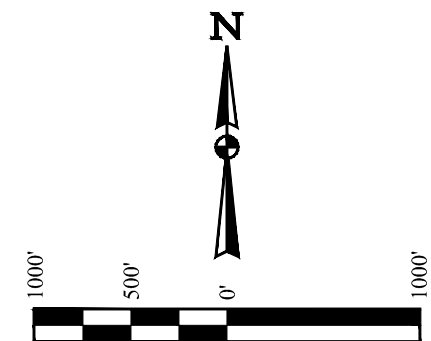
T5N, R63W, 6th P.M.



- LEGEND:**
- = PROPOSED WELLHEAD.
 - ◆ = TARGET 1 LOCATION.
 - ◻ = LEASE ENTRY/EXIT.
 - = BOTTOM HOLE.
 - ▲ = SECTION CORNERS. (NAD 83)

NOTE:
Distances referenced on plat to section lines are perpendicular.

BASIS OF ELEVATION
OPUS SOLUTION GENERATED NAVD 88



PDOP = 1.3	NAD 83 (SURFACE LOCATION) LATITUDE = 40°21'43.74" (40.362150°) LONGITUDE = 104°23'29.92" (104.391645°) STATE PLANE NAD 83 (CO. NORTH) N: 1376702.15' E: 3308852.57'
	NAD 83 (TARGET 1 LOCATION) LATITUDE = 40°21'52.28" (40.364522°) LONGITUDE = 104°22'59.76" (104.383266°) STATE PLANE NAD 83 (CO. NORTH) N: 1377595.53' E: 3311176.46'
	NAD 83 (INFLECTION POINT/ LEASE ENTRY) LATITUDE = 40°22'38.75" (40.377430°) LONGITUDE = 104°22'59.10" (104.383085°) STATE PLANE NAD 83 (CO. NORTH) N: 1382298.05' E: 3311167.86'
	NAD 83 (LEASE EXIT) LATITUDE = 40°23'30.77" (40.391880°) LONGITUDE = 104°22'59.91" (104.383308°) STATE PLANE NAD 83 (CO. NORTH) N: 1387560.87' E: 3311039.25'
	NAD 83 (BOTTOM HOLE) LATITUDE = 40°24'20.93" (40.405815°) LONGITUDE = 104°23'00.69" (104.383524°) STATE PLANE NAD 83 (CO. NORTH) N: 1392636.12' E: 3310915.22'

CERTIFICATE OF REGISTRATION
THIS IS TO CERTIFY THAT THE ABOVE SURVEY WAS MADE BY THE SURVEYOR AND UNDER MY SUPERVISION AND THAT THE SAME ARE TRUE AND CORRECT TO THE BEST OF MY KNOWLEDGE AND BELIEF.

REGISTERED LAND SURVEYOR
REGISTRATION NO. 28285
STATE OF COLORADO
JANUARY 13, 2023

**BONANZA CREEK ENERGY
OPERATING COMPANY, LLC**

**STATE NORTH PLATTE F-36 FED 25N-30-05
NW 1/4 NW 1/4, SECTION 36, T5N, R63W, 6th P.M.
WELD COUNTY, COLORADO**

UINTAH
ENGINEERING & LAND SURVEYING

UELS, LLC
Corporate Office * 85 South 200 East
Vernal, UT 84078 * (435) 789-1017

SURVEYED BY	ORION RICE	05-11-22	SCALE
DRAWN BY	K.C.	05-16-22	1" = 1000'

WELL LOCATION PLAT

REV: 3 12-12-23 D.J.G. (BOTTOM HOLE CHANGE)