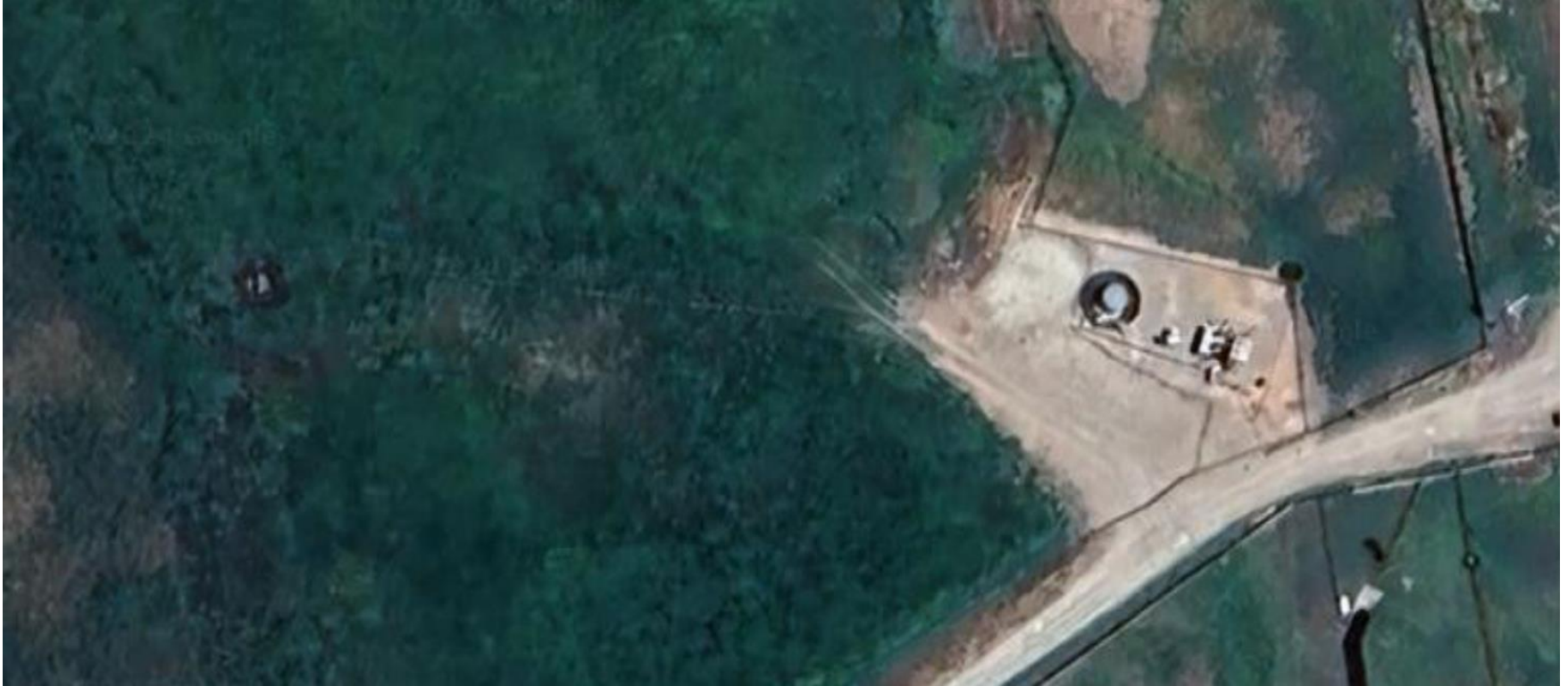


**Storm Water Management and Erosion control**  
**Location Name: TEP Rocky Mountain LLC SAVAGE RMV 180-29 Pad**  
**Location # 324097**



**Location Overview: Location is within High  
Priority/Density/Black Bear Habitat areas/Bald Eagle Nest &  
Roost sites & in close proximity to NSO Habitat area.**

**Section/Township/Range: 29 6S94W**

