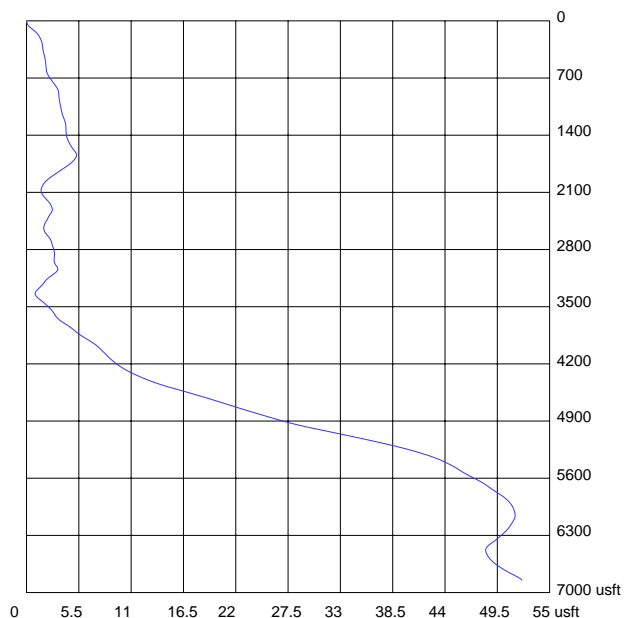


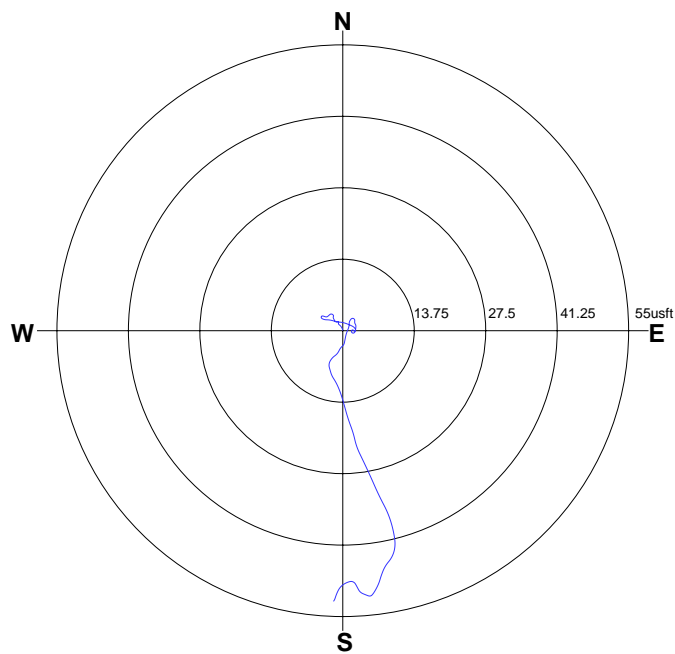


<b>Date:</b> Feb / 06 / 2019	<b>Operator:</b> Brandon Mcknight	<b>API:</b> 05-123-22376
<b>Well:</b> 11-12	<b>Field:</b> PDC Energy	<b>Location:</b> Cecil USX
<b>S/N:</b> 1719	<b>Last Calibration:</b> 12/28/2017	<b>SW Ver:</b> 1.485
<b>Incline:</b> Vertical	<b>Grid Offset:</b> 0.00	<b>Depth Input:</b> Depth Sensor
<b>Units:</b> Imp. US	<b>Latitude:</b> 40.50565 N	<b>Start Depth:</b> 100 usft
<b>Coords:</b> Geographical	<b>Altitude:</b> 0.00 usft	<b>Bottom Depth:</b> 6850 usft
	<b>N/S:</b> 0.00 usft	<b>E/W:</b> 0.00 usft

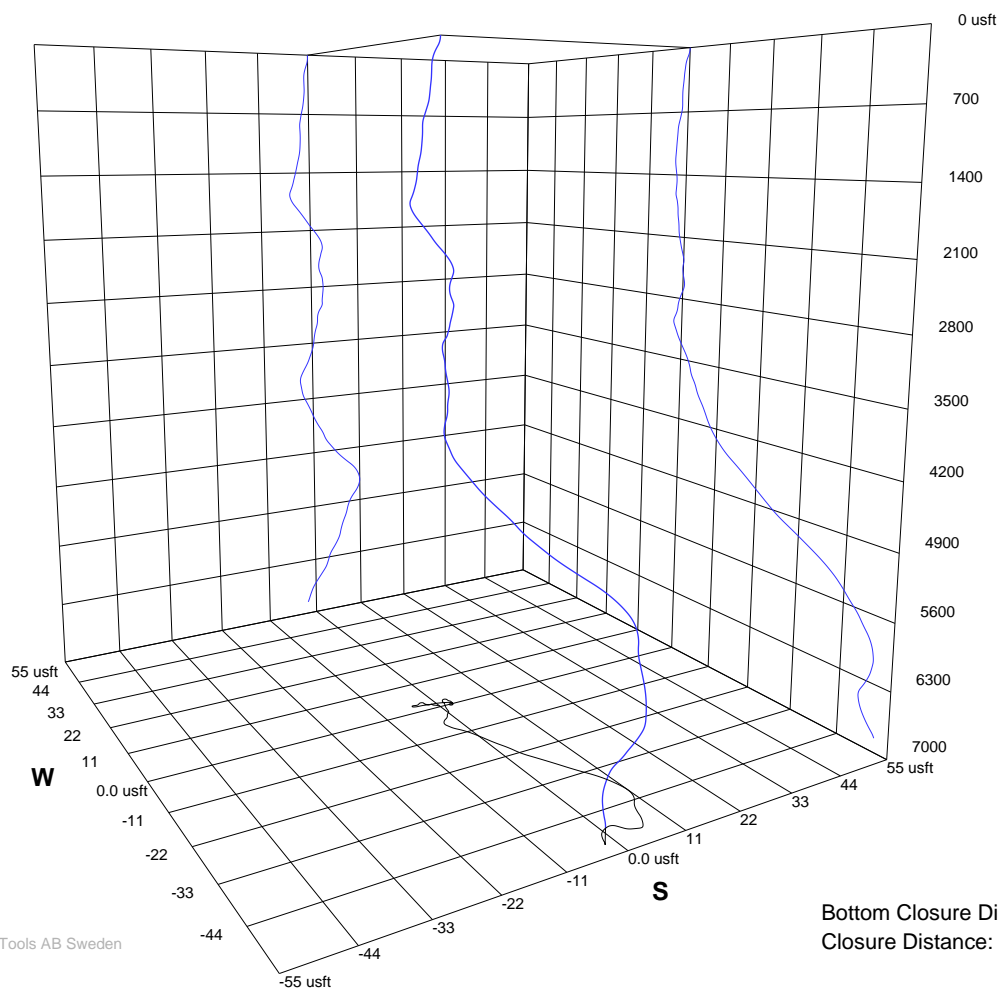
**TVD vs Distance**



**Top View**



**3D View**



Bottom Closure Direction: 189.83 degrees  
Closure Distance: 53.51 usft