



NueVida Resources, LLC

LONG STRING POST JOB REPORT

Ardourel 33081718 3HL 05-067-10037
S:18 T:33N R:8W La Plata CO

CallSheet #: 89034
Proposal #: 72281



LONG STRING Post Job Report

Attention: Mr. Pyeboone Arunakul | (720) 630-4157 | parunakul@seideltech.com
NueVida Resources, LLC
332 Co Road 3100 | Aztec, NM 87410

Dear Mr. Pyeboone Arunakul,

Thank you for the opportunity to provide cementing services on this well. American Cementing strives to achieve complete customer satisfaction. If you have any questions regarding the services or data provided, please contact American Cementing at any time.

Sincerely,

Lyndon Chandarjit

Field Engineer II | (281) 690-3840 | lyndon.chandarjit@americacementing.com

Field Office 28730 US-6, Rifle, CO 81650
Phone: (970) 657-1187

Job Details & Summary

Geometry

Type	Function	OD (in)	ID (in)	Weight (lb/ft)	Thread	Top (ft)	Bottom (ft)	Excess (%)
Casing	Outer	9.625	8.835	40	n/a	0	4272	10
Casing	Outer	9.625	8.835	40	n/a	4272	6272	0
Open Hole	Outer	n/a	8.5	n/a	n/a	6272	17218	20
Casing	Inner	5.5	4.778	20	n/a	0	17218	0

Equipment / People

Unit Type	Unit	Power Unit	Employee #1
Field Storage Float	FSF-013		
Field Storage Float	FSF-014		
Cement Trailer Float	CTF-579	TRC-249	Carlos Ramos
Cement Trailer Float	CTF-522	TRB-421	Devin Burton
Cement Trailer Float	CTF-242	TRC-054	Lynn Wall
Cement Pump Float	CPF-012	TRH-964	Ryan Bonin
Light Duty Vehicles	LDV-083		Jorge Perez

Timing

Event	Date/Time
ERTS	11/04/2023 07:00
Call Out	11/4/2023 19:00
Depart Facility	11/4/2023 23:00
On Location	11/5/2023 06:30
Rig Up Iron	11/5/2023 06:40
Job Started	11/5/2023 06:45
Job Completed	11/5/2023 07:08
Rig Down Iron	11/5/2023 08:30
Depart Location	11/5/2023 09:00

General Job Information

Metrics	Value
Well Fluid Density	11.5 lb/gal
Well Fluid Type	OBM
Rig Circulation Vol	1524 bbls
Rig Circulation Time	4 hours
Calculated Displacement	381 bbls
Actual Displacement	381 bbls
Total Spacer to Surface	40 bbls
Total CMT to Surface	101 bbls
Well Topped Out	No

Job Details

Metrics	Value
Well Full Prior to Job	Yes
Well Fluid Density Into Well	11.5 lb/gal
Well Fluid Density Out of Well	11.5 lb/gal

Job Details (cont.)

Metrics	Value
BHCT	240 °F
BHST	240 °F

Water Analysis

Metrics	Value	Recommended
Water Source	None	
Temperature	56 °F	50-80 °F
pH Level	6	5.5-8.5
Chlorides	500 mg/L	0-3000 mg/L
Total Alkalinity		0-1000
Total Hardness	mg/L	0-500 mg/L
Carbonates	mg/L	0-100 mg/L
Sulfates	mg/L	0-1500 mg/L
Potassium	mg/L	0-3000 mg/L
Iron	mg/L	0-300 mg/L

Circulation

Lost Circulation Experienced	Losses into Spacer	Losses into Cement	Losses into Displacement
No			

Job Execution Information

Fluid	Product	Function	Density (lb/gal)	Yield (ft ³ /sk)	Water Rq. (gal/sk)	Water Rq. (gal/bbl)	Volume (sk)	Volume (bbl)	Designed Top (ft)
1	IntegraGuard EZ II	Spacer	12.00			28.32		40.00	0
2	Recovery Fluid	Scavenger	12.00	1.62	8.42		759.00	218.46	0
3	Primary	Primary	13.30	1.92	9.32		1841.00	629.95	4272
4	Retarded Water	Displacement	8.36			41.60		20.00	16274
5	Displacement	DisplacementFinal	8.34			42.00		361.00	0

Job Fluid Details

Fluid	Type	Fluid	Product	Function	Conc.	Uom
1	Spacer	IntegraGuard EZ II	FLY ASH (POZZOLAN)	Extender	256.19	lb/bbl
1	Spacer	IntegraGuard EZ II	ASA-301	Viscosifier	3.00	lb/bbl
1	Spacer	IntegraGuard EZ II	SS-201	Surfactant	1.00	gal/bbl
1	Spacer	IntegraGuard EZ II	XCem-308	Defoamer	0.50	lb/bbl
2	Scavenger	Recovery Fluid	FLY ASH (POZZOLAN)	Extender	100.00	%
2	Scavenger	Recovery Fluid	GW-86	Viscosifier	0.10	lb/sk
2	Scavenger	Recovery Fluid	R-7C	Retarder	1.00	%BWOB
3	Primary	Primary	CLASS G	Cement	50.00	%
3	Primary	Primary	FLY ASH (POZZOLAN)	Extender	50.00	%
3	Primary	Primary	BA-90	BondEnhancer	3.00	lb/sk
3	Primary	Primary	BENTONITE	Viscosifier	4.00	%BWOB
3	Primary	Primary	FL-24	FluidLoss	0.30	%BWOB
3	Primary	Primary	GW-86	Viscosifier	0.10	%BWOB
3	Primary	Primary	IntegraSeal PHENO	LostCirculation	1.00	lb/sk
3	Primary	Primary	R-3	Retarder	0.50	%BWOB
3	Primary	Primary	S-8	StrengthRetrogression	25.00	%BWOB
3	Primary	Primary	XCem-308	Defoamer	0.30	%BWOB
4	Displacement	Retarded Water	BIOCIDE,BIOC11139W	Biocide	0.01	gal/bbl
4	Displacement	Retarded Water	CI-27	Other	0.21	gal/bbl
4	Displacement	Retarded Water	ResCare CS-2	ClayProtection	0.08	gal/bbl
4	Displacement	Retarded Water	SR-61L	Retarder	0.10	gal/bbl

Job Logs

Line	Event	Date (MM/DD/YY)	Time (HH:MM)	Density (lb/gal)	Pump Rate (bpm)	Pump Volume (bbls)	Pipe Pressure (psi)	Comment
1	Callout	11/4/2023	19:00					Callout location time 7:00
2	Leave Yard	11/4/2023	23:00					Leave Yard
3	Arrive On Location	11/5/2023	06:30					Arrive on Location and Check in with Company Man
4	Safety Meeting	11/5/2023	06:35					Pre rig up safety meeting
5	Rig Up Iron	11/5/2023	06:40					Rig Iron and equipment
6	Casing and Circulation	11/5/2023	07:30					Run Casing and Circulate the Well
7	Safety Meeting	11/5/2023	01:33					Pre job Safety Meeting
8	Fill Lines	11/5/2023	02:45	8.34	2	5	147	Fill Lines and Drop Bottom Plug
9	Test Lines	11/5/2023	02:49	8.34			5000	Test Lines to 5000 psi
10	Spacer	11/5/2023	03:01	12	4	40	564	Pump 40 bbls of Spacer
11	Scavenger	11/5/2023	03:11	12	5.5	10	803	Pump Spacer Scavenger
12	Scavenger	11/5/2023	03:19	12	5.5	50	789	Pump 50 bbls Scavenger Cement
13	Scavenger	11/5/2023	03:29	12	5.5	100	693	Pump 100 bbls Scavenger Cement
14	Scavenger	11/5/2023	03:48	12	5.5	219	692	Pump 219 bbls Scavenger Cement
15	Primary	11/5/2023	03:49	13.3	5.5	10	841	Pump 10 bbls Primary Cement
16	Primary	11/5/2023	04:07	13.3	5.5	100	685	Pump 100 bbls Primary Cement
17	Primary	11/5/2023	04:24	13.3	6	200	821	Pump 200 bbls Primary Cement
18	Primary	11/5/2023	04:40	13.3	6	300	860	Pump 300 bbls Primary Cement
19	Primary	11/5/2023	05:03	13.3	6	400	690	Pump 400 bbls Primary Cement
20	Primary	11/5/2023	05:19	13.3	6	500	713	Pump 500 bbls Primary Cement
21	Primary	11/5/2023	05:43	13.3	1.3	630	154	Pump 630 bbls Primary Cement
22	Wash Pumps and Lines	11/5/2023	05:48	8.34				Wash Pumps and Lines
23	Retarded Water	11/5/2023	06:01	8.34	5	5	178	Pumped 5 bbls of Sugar water before Plug
24	Drop Top Plug	11/5/2023	06:04	8.34	6	10	359	Drop Top Plug and start displacement
25	Displacement	11/5/2023	06:18	8.34	6	100	1579	100 bbls Displacement
26	Displacement	11/5/2023	06:42	8.34	6	240	2333	240 bbls Displacement 40 bbls of Spacer to Surface
27	Displacement	11/5/2023	06:49	8.34	6	280	2380	280 bbls Displacement 101 bbls of Scavenger to Surface
28	Land Plug	11/5/2023	07:08	8.34	3	381	2960	381 bbls Land Plug 2064-2960 psi
29	Bleedoff	11/5/2023	07:12					Bleedoff 5 bbls back
30	Check Floats	11/5/2023	07:18					Check Floats
31	Safety Meeting	11/5/2023	08:25					Post job Safety Meeting
32	Rig Down Iron	11/5/2023	08:30					Rig Down Iron
33	Depart Location	11/5/2023	09:00					Thank You American Cementing

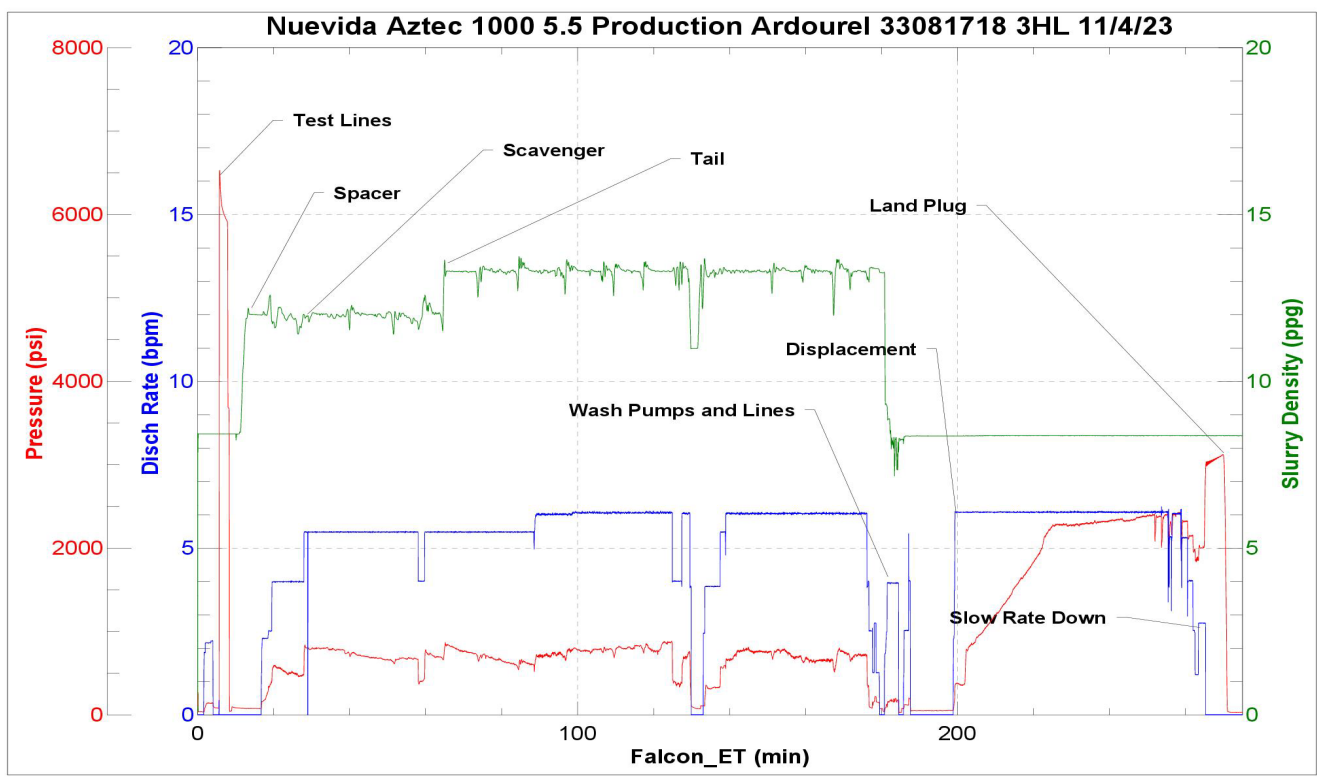
Pump Diagrams

JobMaster Program Version 5.01C1

Job Number: 89034

Customer: Nueva Aztec 1000 Produc

Well Name: Ardourel 33081718 3HL



Job Start: Sunday, November 05, 2023