

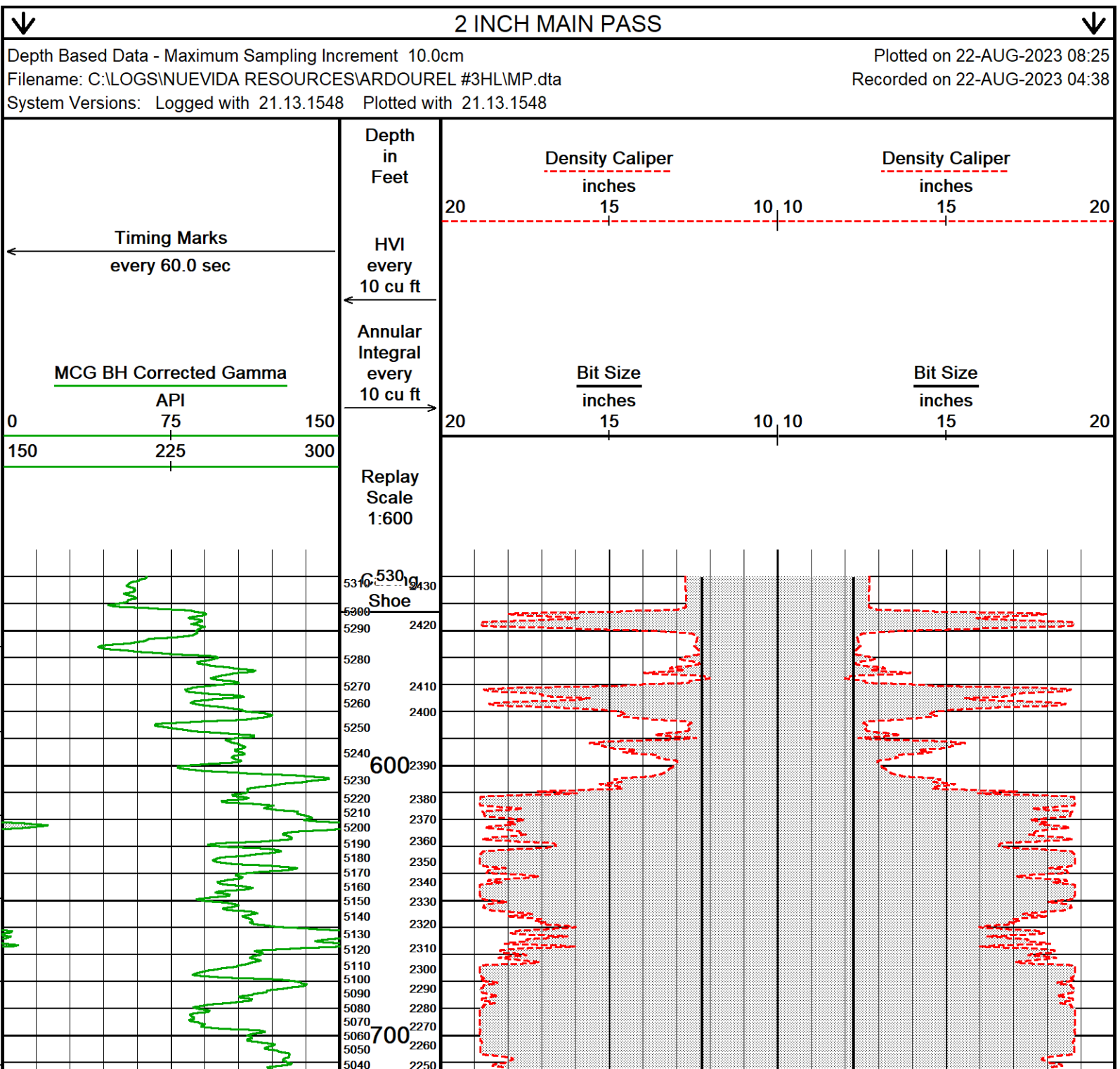
</

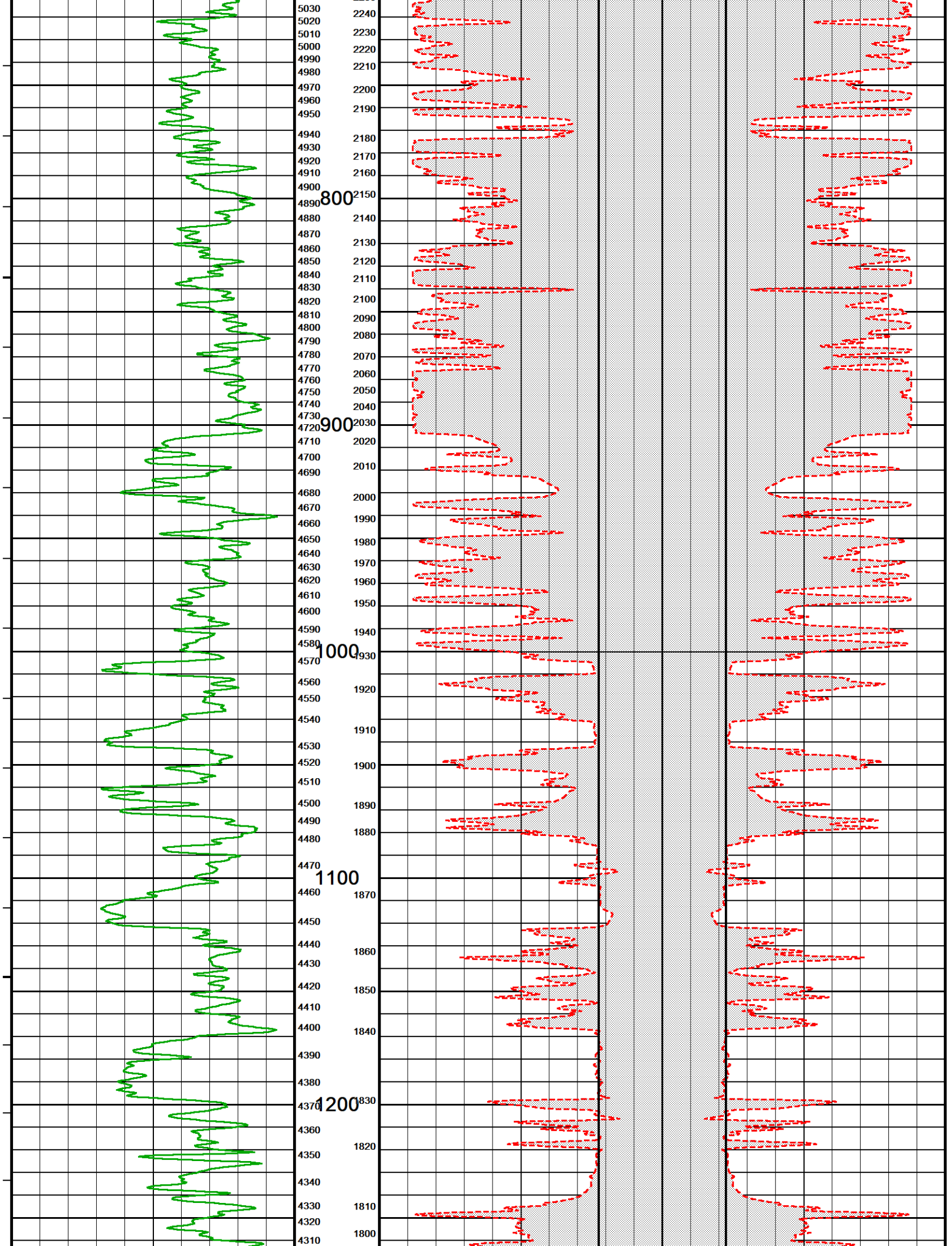
BOREHOLE RECORD					Last Edited: 22-AUG-2023 02:13
Bit Size inches		Depth From feet		Depth To feet	
17.500		0.00		518.00	
12.250		518.00		6292.00	
CASING RECORD					
Type	Size inches	Depth From feet	Shoe Depth feet	Weight pounds/ft	
SURFACE	13.375	0.00	518.00	54.50	

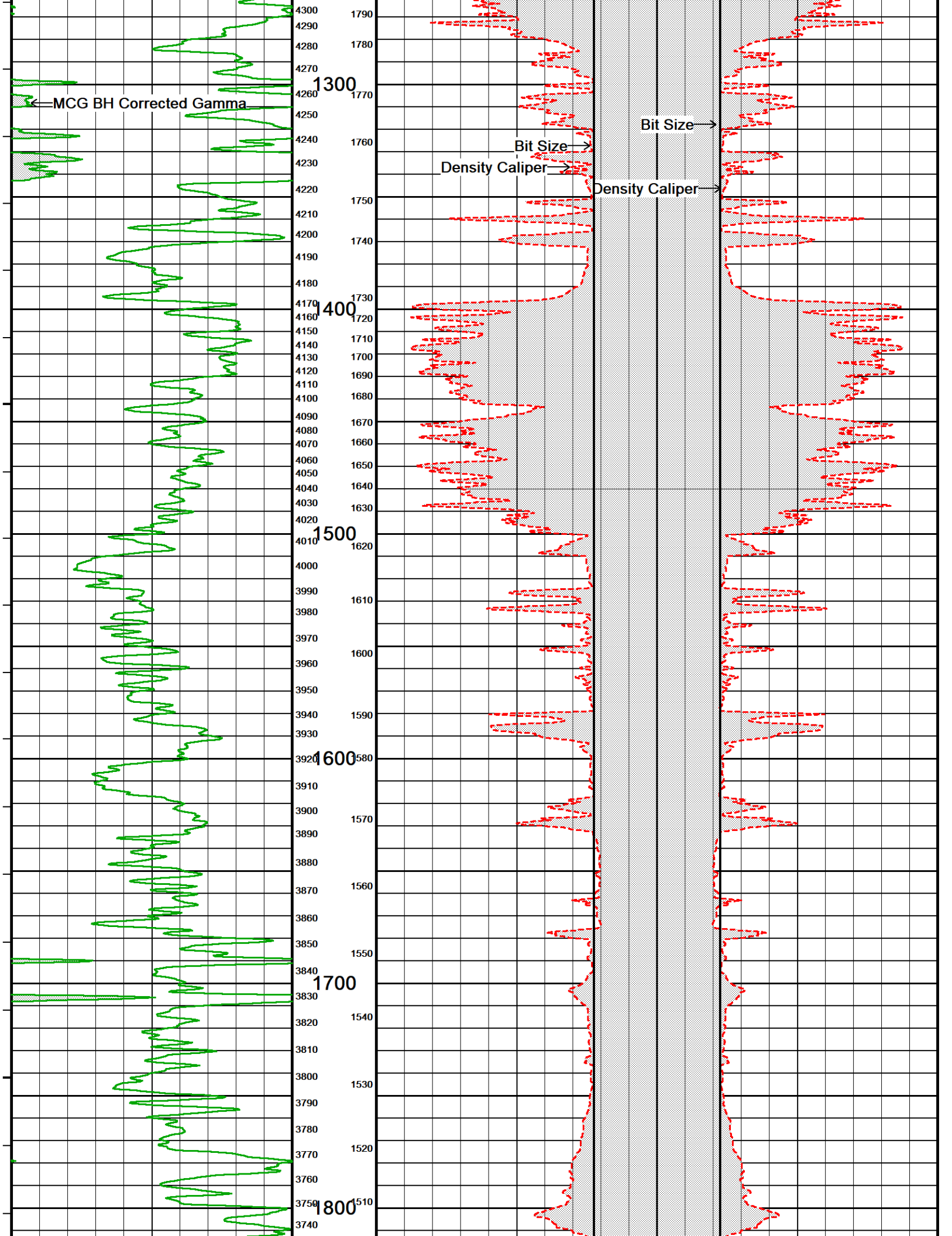
REMARKS
SOFTWARE: LOGGED WITH WLS. 22.11.1632
CALIBRATED MEASURE WHEEL PROCEDURE. FIRST RUN IN HOLE.
TOOLS RUN: MAI, MFE, MSS, SKJ, MPD, MCG, SHA, MTA, CBH
HARDWARE: MAI: 0.5" STANDOFF MFE: 0.5" STANDOFF MPD: 8" PROFILE PLATE FITTED MSS: 0.5" STANDOFF X3
ANNULAR VOLUME BASED ON 9.625" CASING
FOR HOLE VOLUME AND ANNULAR VOLUME, PLEASE SEE LOG
CREW: ARVELO GARCIA, MUIR

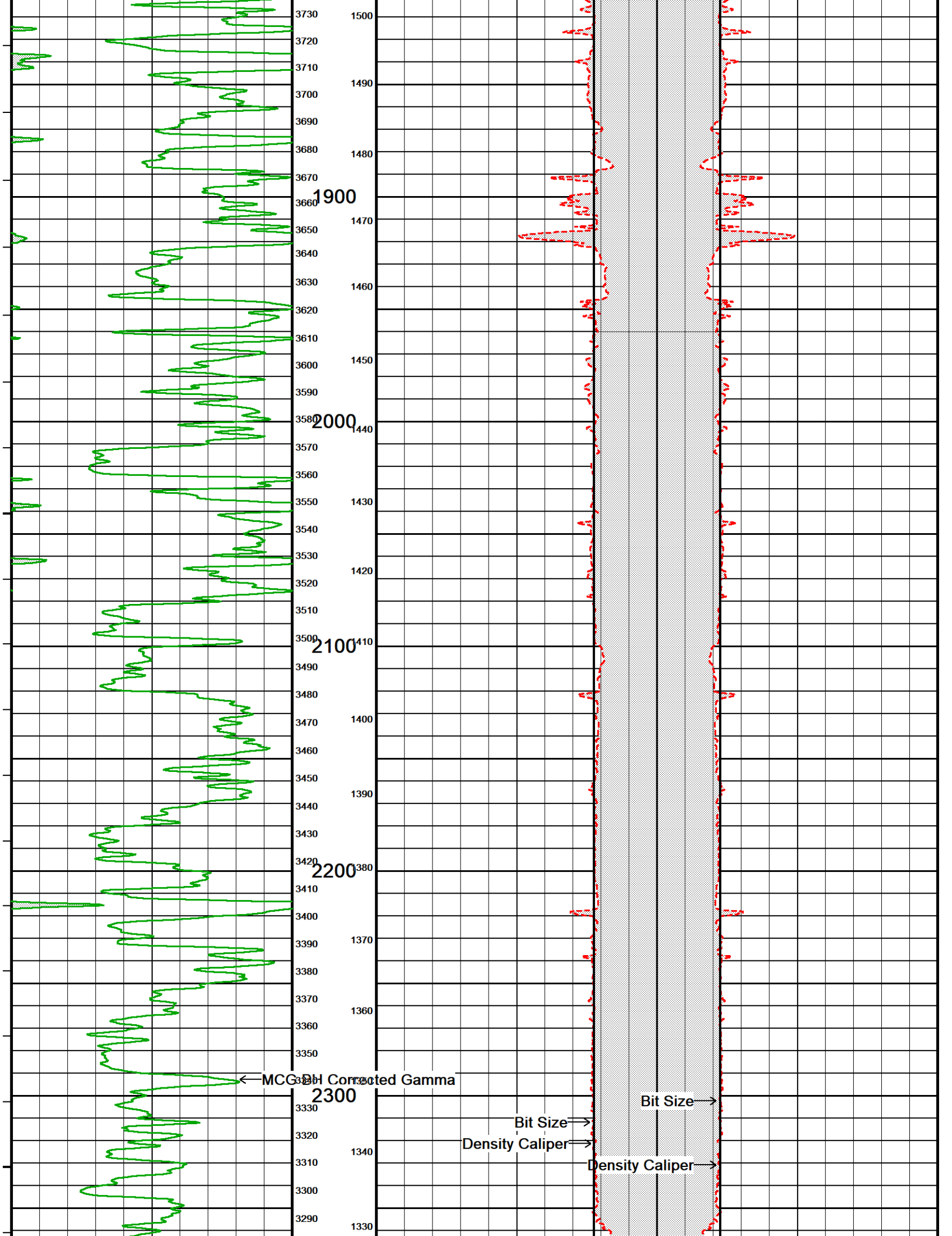
In interpreting, communicating or providing information and/or making recommendations, either written or oral, as to logs or test or other data, type or amount of material, or Work or other service to be furnished, or manner of performance, or in predicting results to be obtained, the Contractor will give the Company the benefit of the Contractor's best judgment based on its experience and will perform all such Work in a good and workmanlike manner. Any interpretation of test or other data, and any recommendation or reservoir description based upon such interpretations, are opinions based upon inferences from measurements and empirical relationships and assumptions, which inferences and assumptions are not infallible, and with respect to which professional engineers and analysts may differ. ACCORDINGLY ANY INTERPRETATION OR RECOMMENDATION RESULTING FROM THE SERVICES WILL BE AT THE SOLE RISK OF THE COMPANY, AND THE CONTRACTOR CANNOT AND DOES NOT WARRANT THE ACCURACY, CORRECTNESS OR COMPLETENESS OF ANY SUCH INTERPRETATION OR RECOMMENDATION, WHICH INTERPRETATIONS AND RECOMMENDATIONS SHOULD NOT, THEREFORE, UNDER ANY CIRCUMSTANCES BE RELIED UPON AS THE SOLE OR MAIN BASIS FOR ANY DRILLING, COMPLETION, WELL TREATMENT, PRODUCTION OR FINANCIAL DECISION, OR ANY PROCEDURE INVOLVING ANY RISK TO THE SAFETY OF ANY DRILLING ACTIVITY, DRILLING RIG OR ITS CREW OR ANY OTHER INDIVIDUAL. THE COMPANY HAS FULL RESPONSIBILITY FOR ALL DECISIONS CONCERNING THE SERVICES.

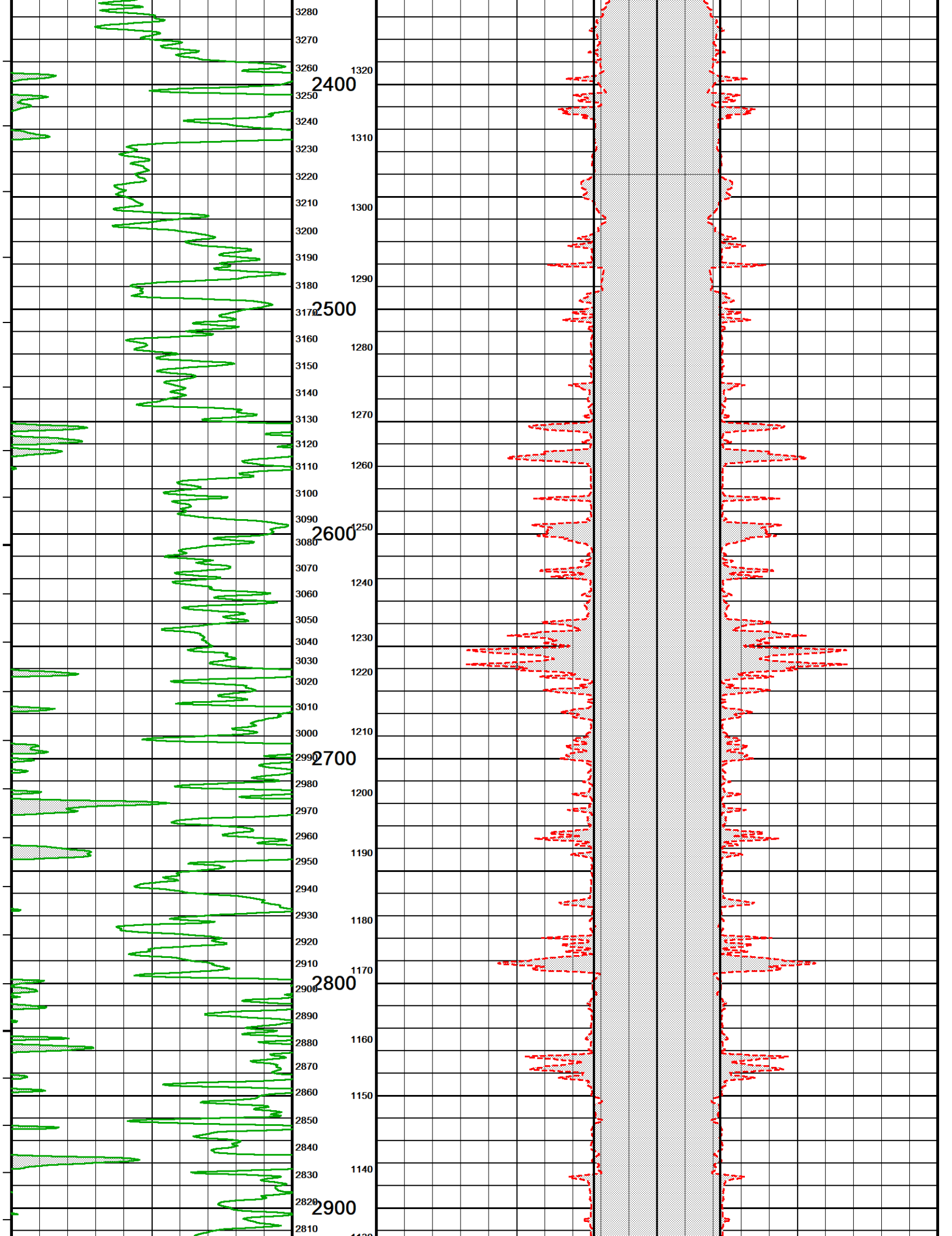
Powered by Weatherford tools, acquisition systems, and software

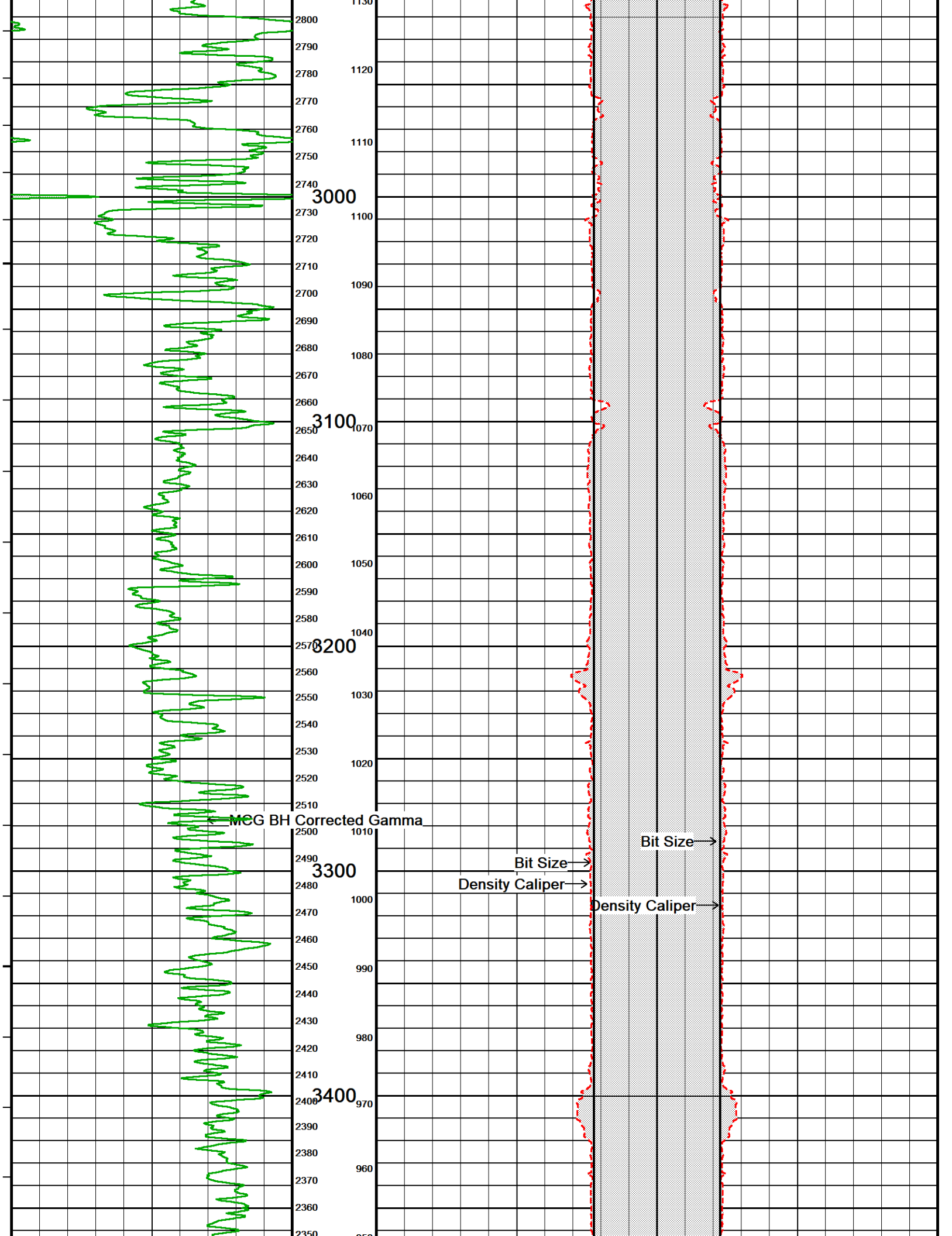


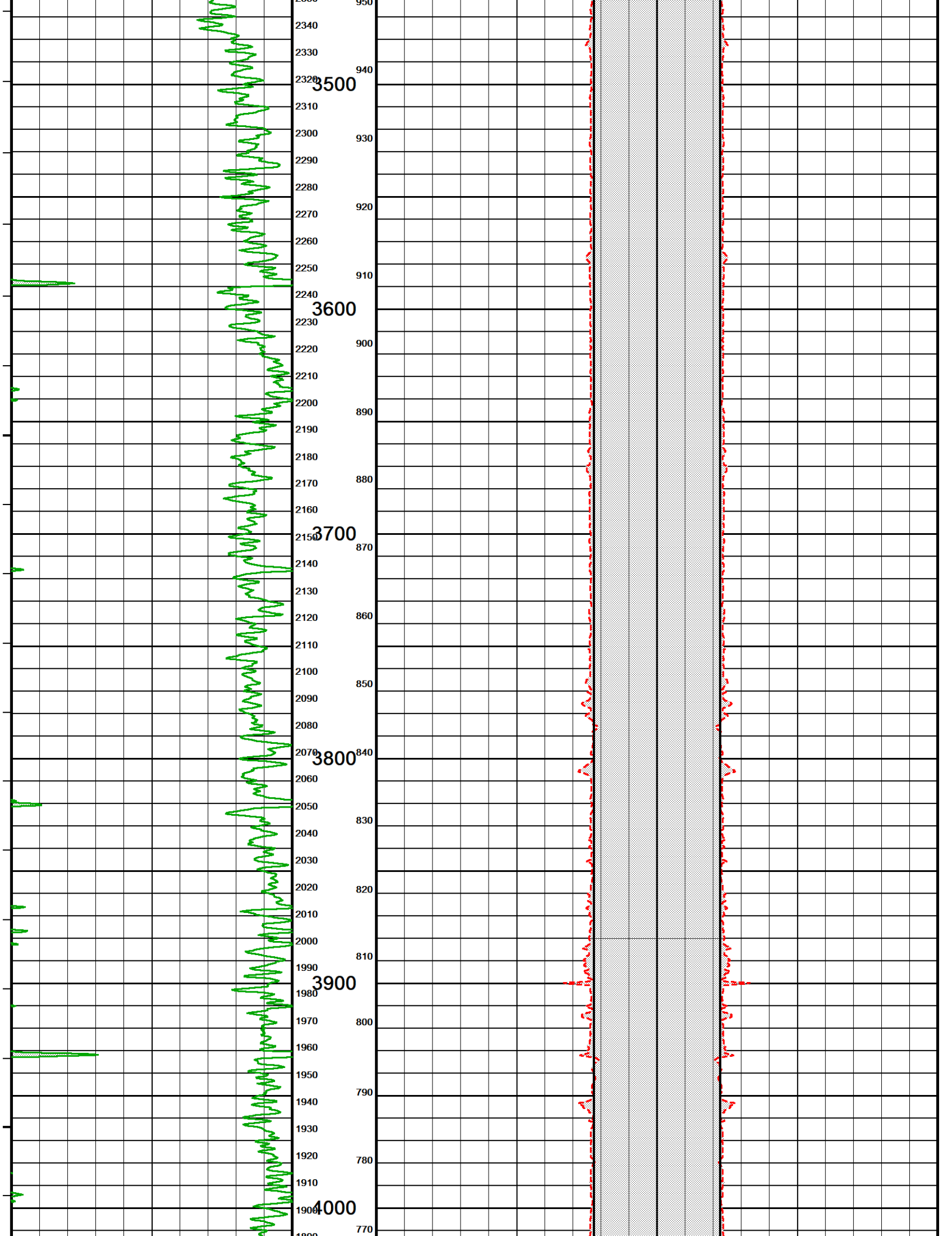


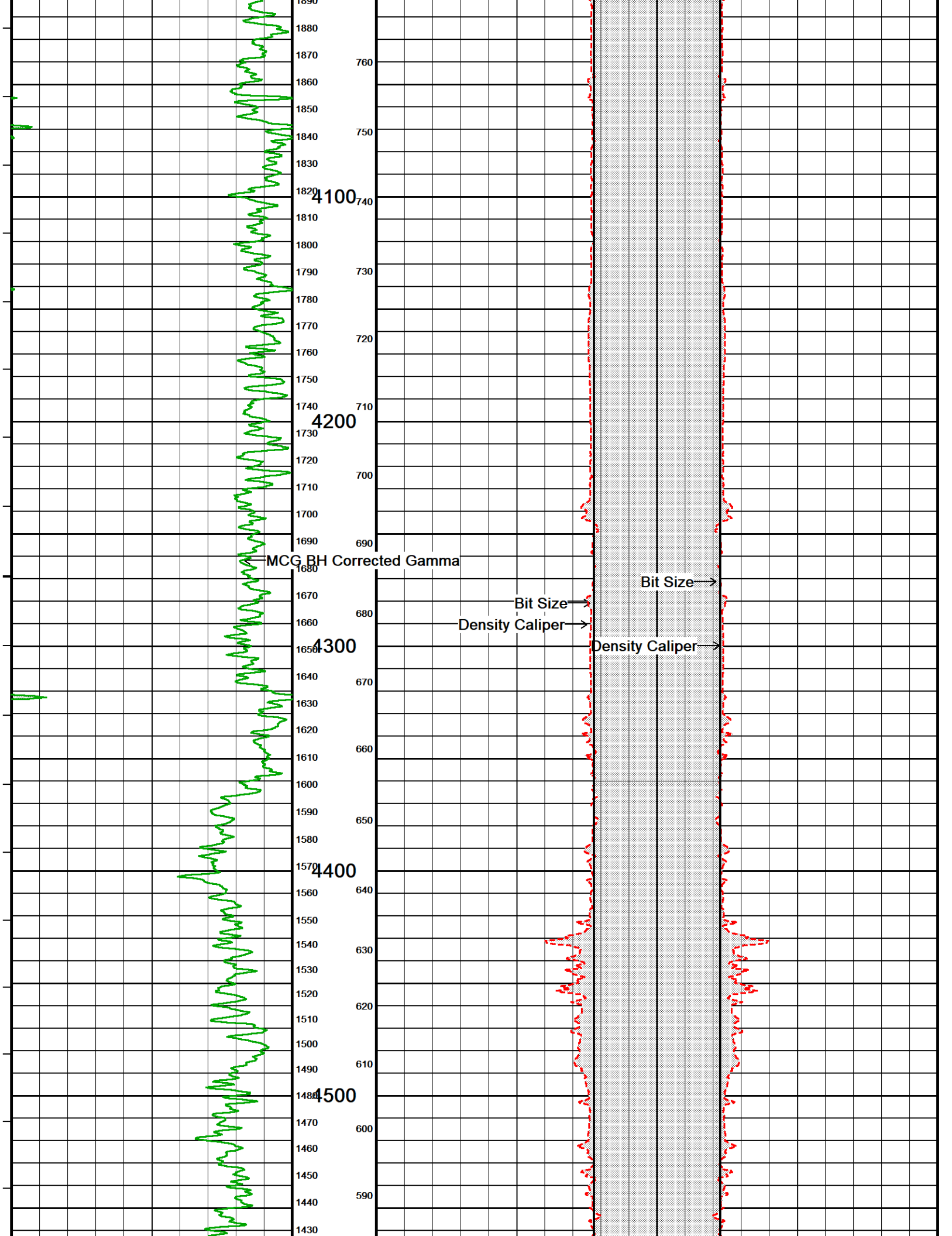


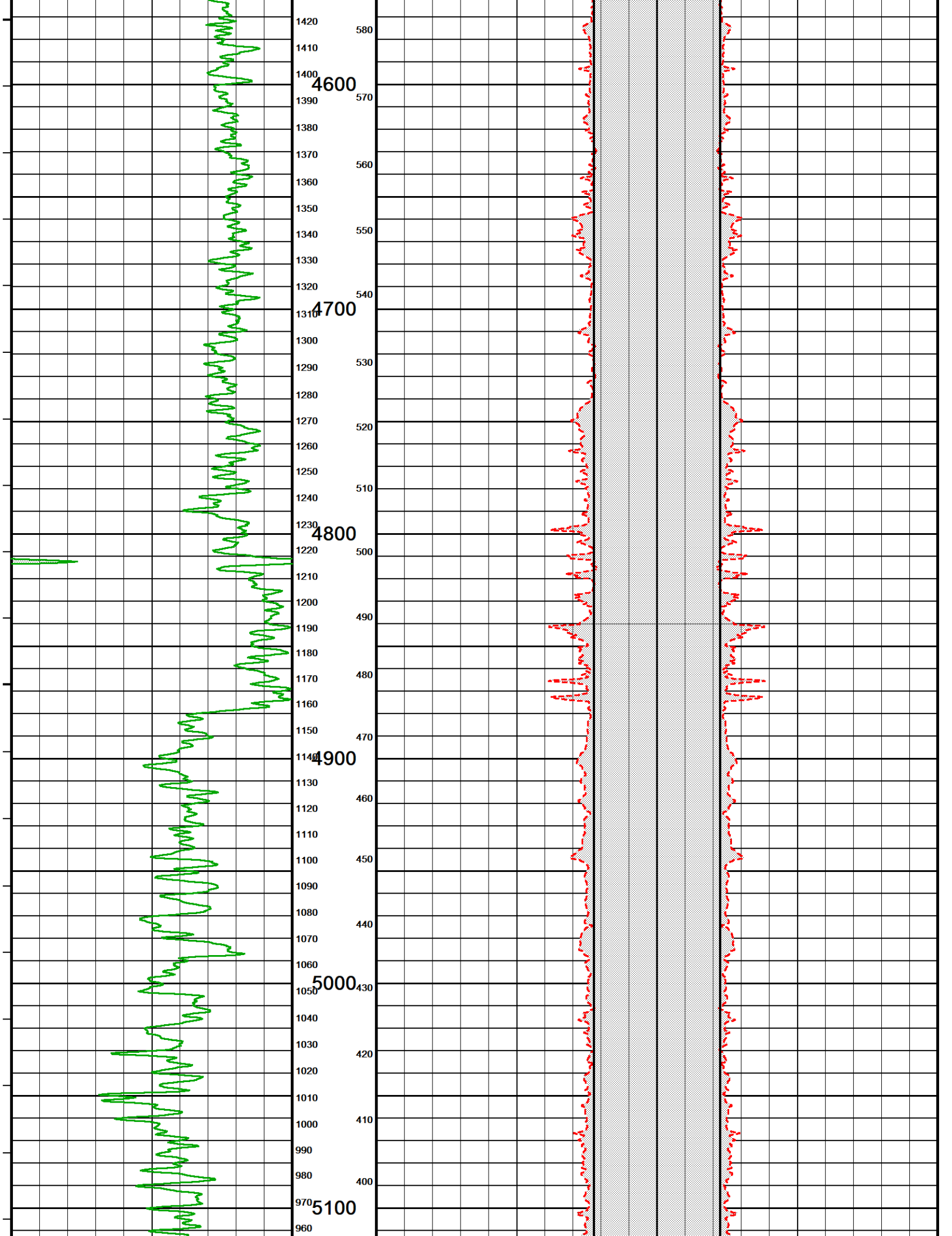


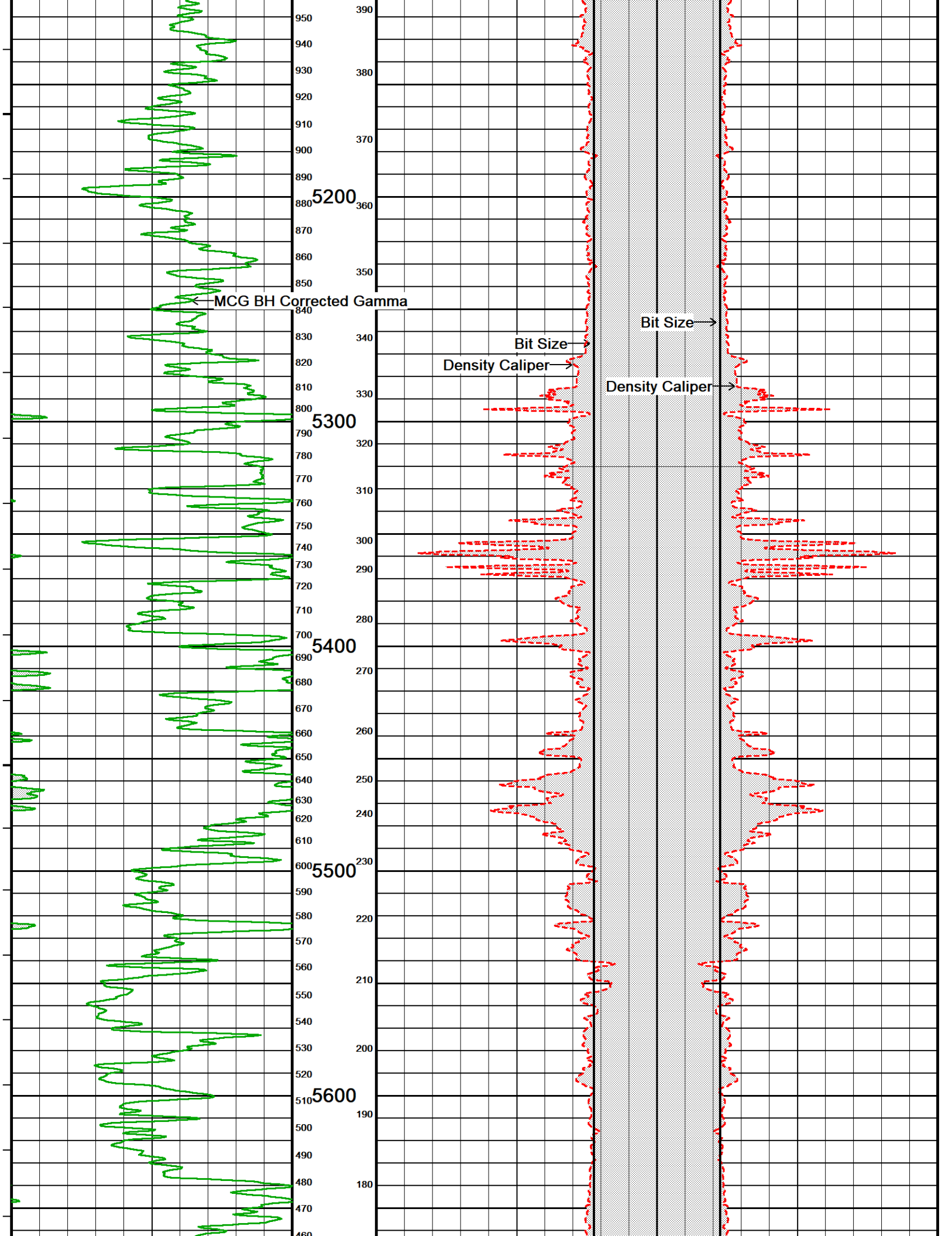


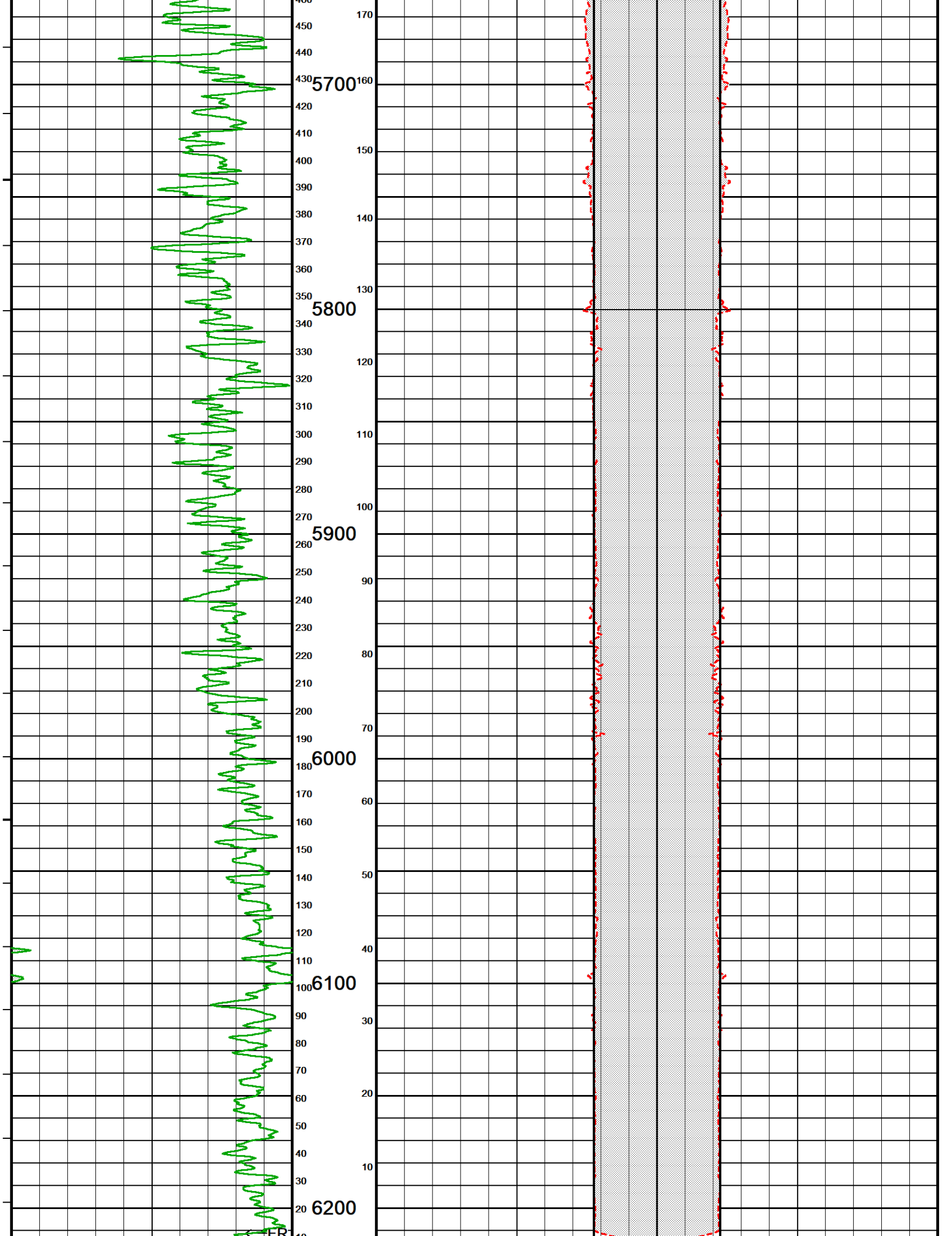


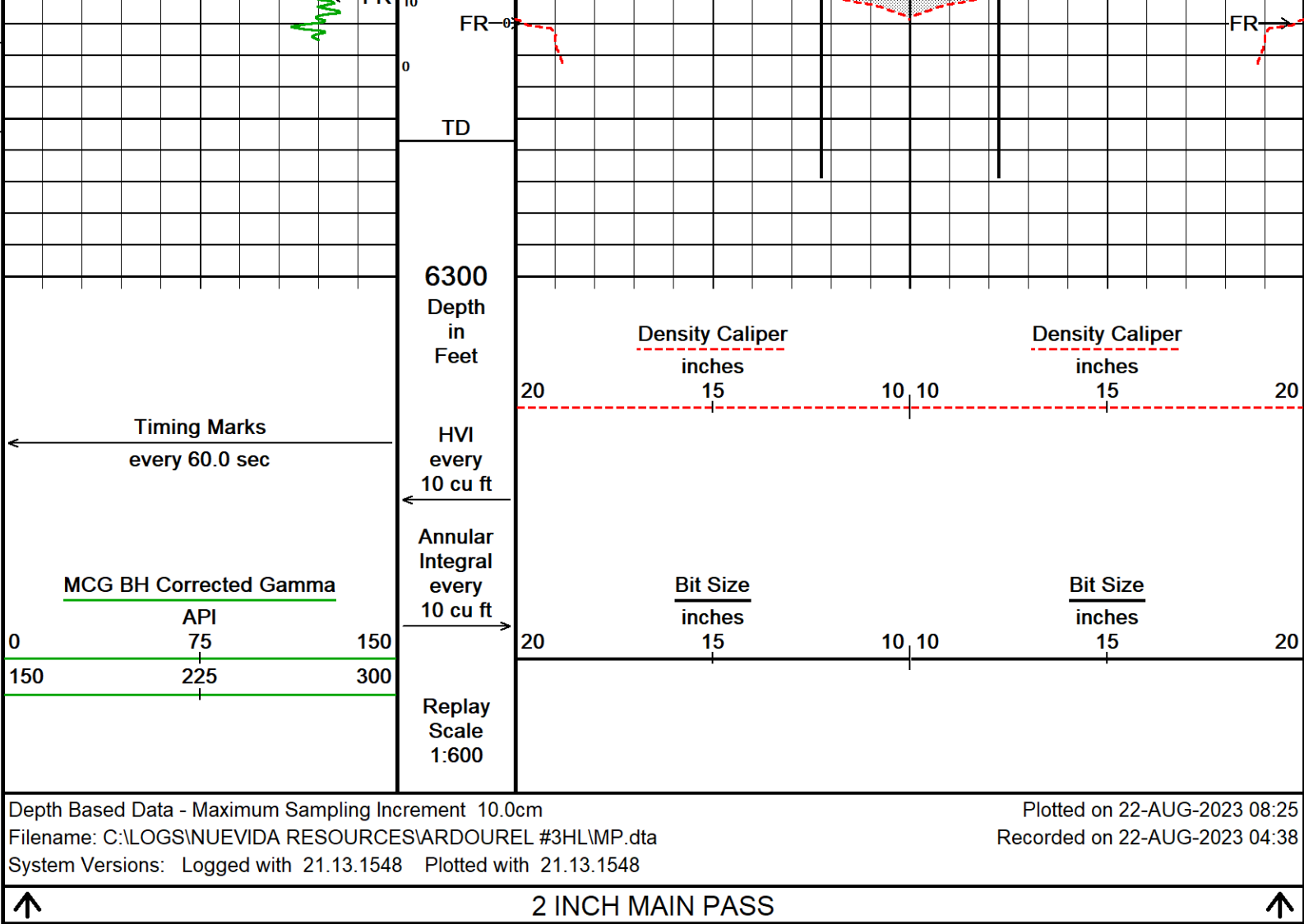






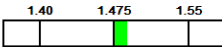






BEFORE SURVEY CALIBRATION		
C:\LOGS\NUEVIDA RESOURCES\ARDOUREL #3HLMP.dta		
General Constants All 000		Last Edited on 22-AUG-2023,02:14
General Parameters		
Mud Resistivity	2.260	ohm-metres
Mud Resistivity Temperature	75.000	degrees F
Water Level	0.000	feet
Borehole Fluid Processing	Wet Hole	
Hole/Annular Volume and Differential Caliper Parameters		
HVOL Method	Single Caliper	
HVOL Caliper 1	Density Caliper	
HVOL Caliper 2	N/A	
Annular Volume Diameter	9.625	inches
Caliper for Differential Caliper	None	
Rwa Parameters		
Porosity used	Base Density Porosity	
Resistivity used	Array Ind. Two Res Rt	
RWA Constant A	0.620	
RWA Constant M	2.150	
SW/APOR Tool Source	0.000	
Gamma Calibration MCG-D.K 486		Field Calibration on 01-AUG-2023 09:35
	Measured	Calibrated (API)
Background	126	85
Calibrator (Gross)	1295	870
Calibrator (Net)	1169	785

Gamma Calibration Tolerances MCG-D.K 486

Ratio 1.489  Counts/API

The bar shows a scale from 1.40 to 1.55. The value 1.489 is indicated by a green bar segment.

Gamma Constants MCG-D.K 486

Last Edited on 22-AUG-2023,03:51

Gamma Calibrator Number GRCC287
 GRC-M Calibrator Jig in Use? NO
 Inactive Background Jig in Use? NO
 Mud Density 1.07 gm/cc
 Caliper Source for Processing Density Caliper
 Tool Position Eccentred
 Potassium Equivalence Chloride
 K Mud Concentration 0.00 %

Caliper Calibration MPD-D.A 460

Base Calibration on 06-JUN-2023 12:59

Field Calibration on 06-JUN-2023 13:00

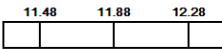
Base Calibration

Reading No	Measured	Calibrator Size (in)
1	12790	4.00
2	19272	5.96
3	25879	7.97
4	32112	9.84
5	39209	11.88
6	N/A	N/A

Field Calibration

Measured Caliper (in)	Actual Caliper (in)
11.88	11.88

Caliper Calibration Tolerances MPD-D.A 460

Long Arm Field Cal. 11.88  in

The bar shows a scale from 11.48 to 12.28. The value 11.88 is indicated by a green bar segment.

DOWNHOLE EQUIPMENT

C:\LOGS\NUEVIDA RESOURCES\ARDOUREL #3HL\MP.dta

Cablehead, 11 pin
 CBH-CC 392 LG: 2.40 ft WT: 24.3 lb OD: 2.240 in

11C-11B Compact Tool Adaptor
 MTA-K.B 306 LG: 1.53 ft WT: 13.2 lb OD: 2.240 in

Compact Swivel Head Adaptor
 SHA-J.B 508 LG: 2.30 ft WT: 22.0 lb OD: 2.244 in

Compact Comms Gamma
 MCG-D.K 486 LG: 8.70 ft WT: 63.9 lb OD: 2.244 in

Compact Density/Caliper
 MPD-D.A 460 LG: 9.59 ft WT: 90.4 lb OD: 2.913 in

Compact Knuckle Joint
 SKJ-E.B 654 LG: 2.17 ft WT: 24.3 lb OD: 2.244 in

Compact Sonic
 MSS-D.A 415 LG: 12.52 ft WT: 72.8 lb OD: 2.244 in

Compact Focussed Electric
 MFE-C.A 400 LG: 6.05 ft WT: 48.5 lb OD: 2.244 in



44.55 ft GGCE - MCG BH Corrected Gamma

41.65 ft CGXT - MCG External Temperature

35.89 ft AVOL - Annular Volume

35.89 ft HVOL - Hole Volume

35.89 ft CLDC - Density Caliper

23.01 ft TR11 - 4' Transit Time

22.51 ft TR21 - 3' Transit Time

22.01 ft TR12 - 6' Transit Time

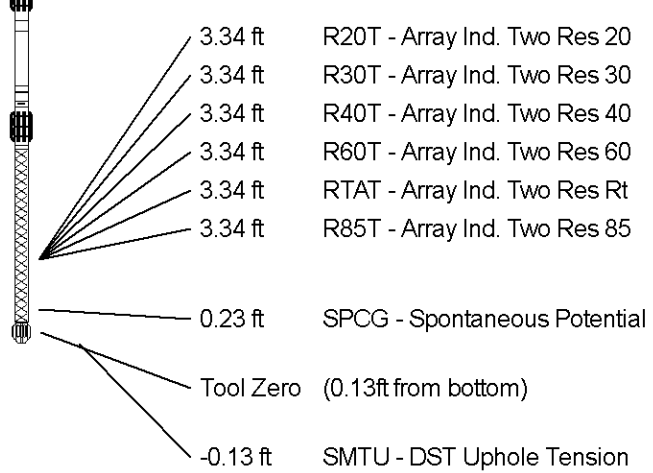
21.51 ft TR22 - 5' Transit Time

19.01 ft SPRL_W - Wyllie Lmst Sonic Por.

19.01 ft DT35 - 3-5' Compensated Sonic

Compact Induction
MAI-C.A 482 LG: 10.81 ft WT: 48.5 lb OD: 2.240 in

Total Length: 56.06 ft Weight: 407.9 lb



COMPANY	NUEVIDA RESOURCES, LLC
WELL	ARDOUREL 3HL
FIELD	MORIARTY PROSPECT
PROVINCE/COUNTY	LA PLATA
COUNTRY/STATE	COLORADO, USA

Elevation Kelly Bushing	6744.00	feet	Last Reading	543.00	feet
Elevation Drill Floor	6744.00	feet	First Reading	6220.00	feet
Elevation Ground Level	6719.00	feet	Depth Driller	6292.00	feet
			Depth Logger	6257.00	feet



BOREHOLE PROFILE