

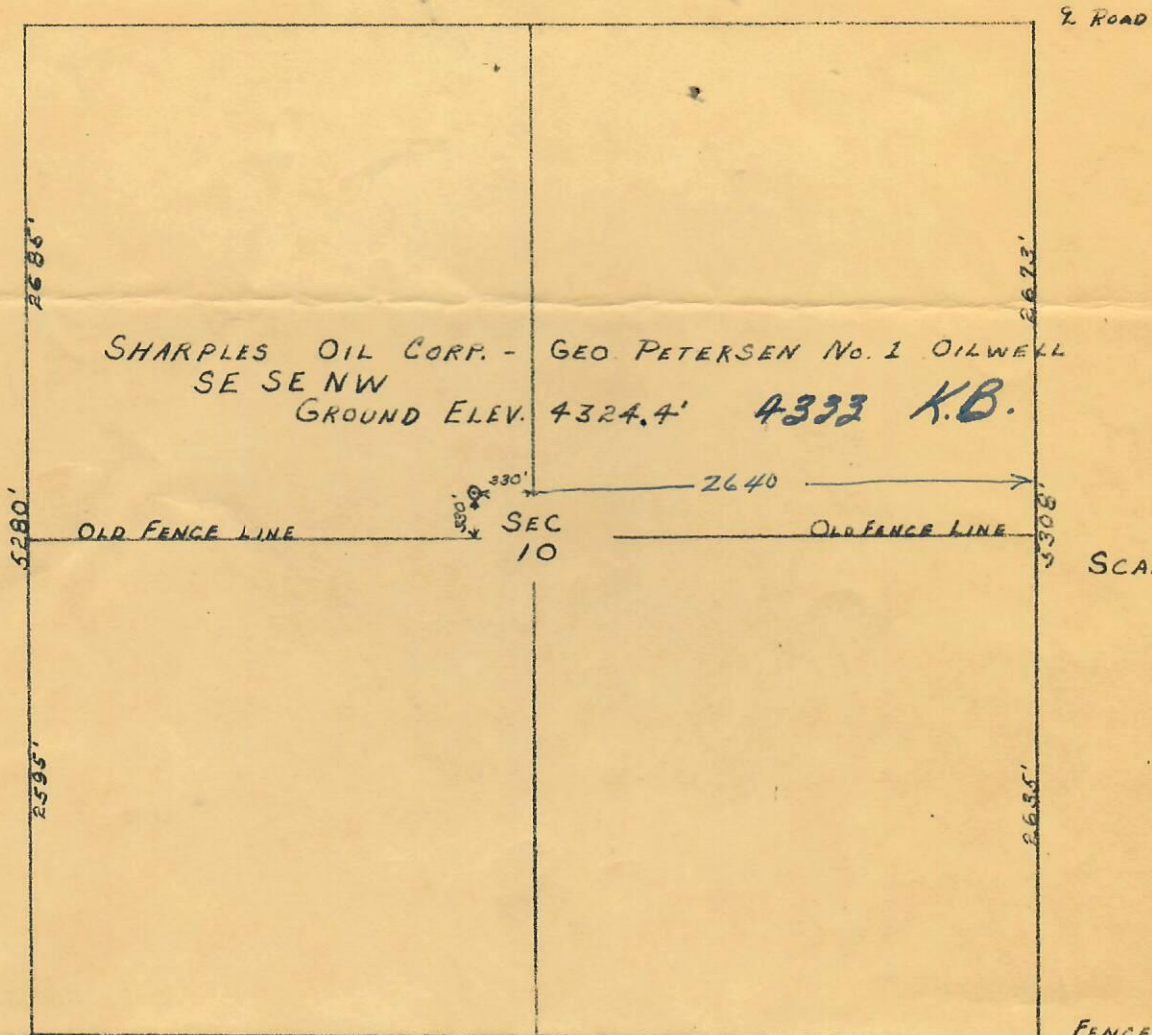
CERTIFICATE OF SURVEY
for
Sharples Oil Corp.

627

08705794



T2N R56W 6PM



I hereby certify that the above plat is an accurate representation of a correct survey showing the location of Sharples Oil Corp.- Geo. Petersen No.1 Oilwell located in SE 1/4 Sec.10 T2N R56W 6PM. The elevation of the ground at the stake is 4324.4 feet above sea level from M.S. & G. Bench Mark.

Fort Morgan, Colorado
May 11, 1954

Beul J. Osborn
Registered Professional Engineer
State of Colorado



was V H Linnon