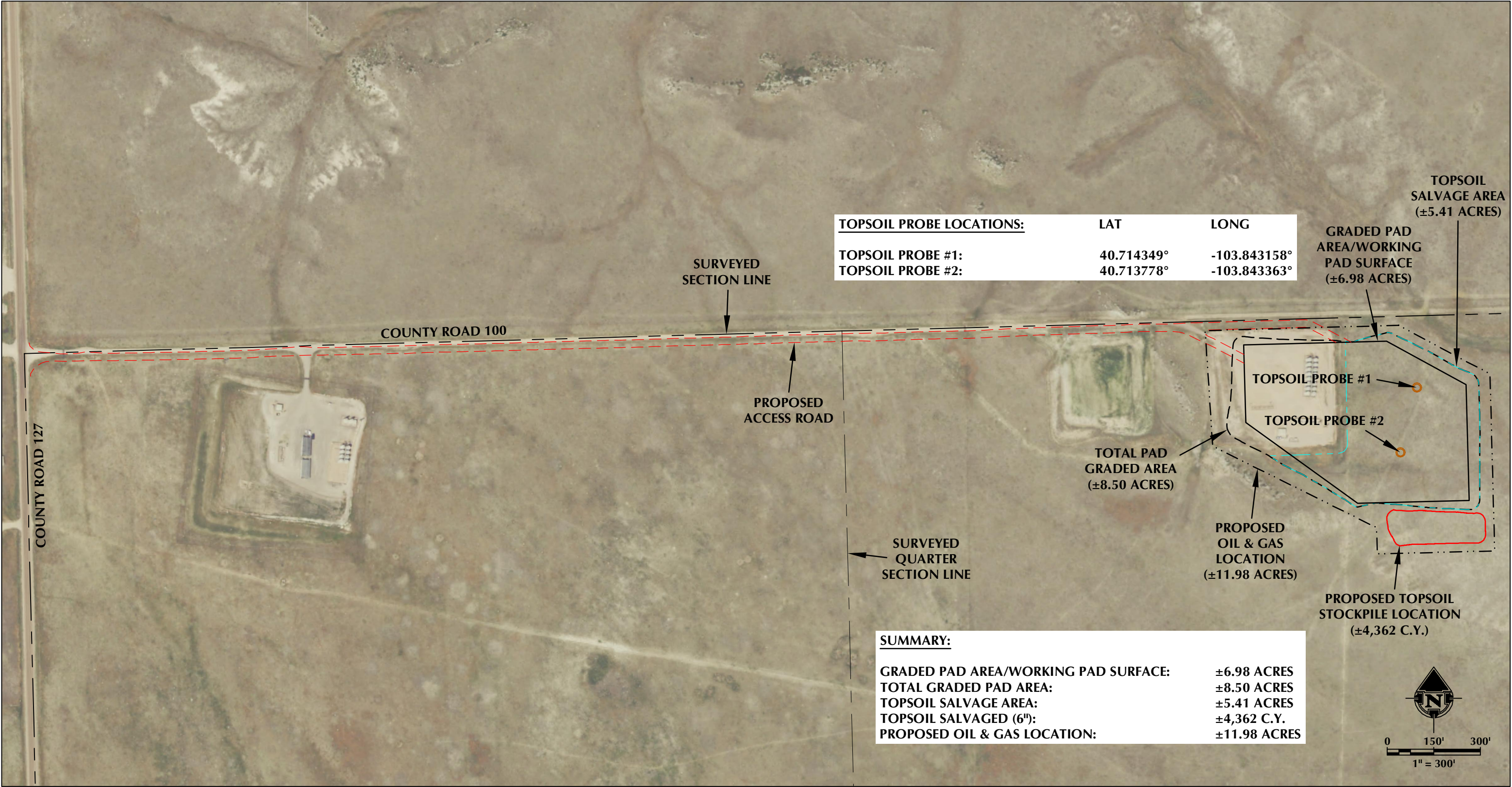


TOPSOIL PLAN

SPEED GOAT FED 3432-3435

N1/2 NE1/4 SECTION 34, TOWNSHIP 9 NORTH, RANGE 58 WEST, 6TH P.M., WELD COUNTY, COLORADO



TOPSOIL PROBE LOCATIONS:	LAT	LONG
TOPSOIL PROBE #1:	40.714349°	-103.843158°
TOPSOIL PROBE #2:	40.713778°	-103.843363°

SUMMARY:	
GRADED PAD AREA/WORKING PAD SURFACE:	±6.98 ACRES
TOTAL GRADED PAD AREA:	±8.50 ACRES
TOPSOIL SALVAGE AREA:	±5.41 ACRES
TOPSOIL SALVAGED (6"):	±4,362 C.Y.
PROPOSED OIL & GAS LOCATION:	±11.98 ACRES

LEGEND

TOPSOIL PROBE LOCATION

PROPOSED OIL & GAS LOCATION

PROPOSED WORKING PAD SURFACE

TOPSOIL STOCKPILE

PROPOSED ACCESS ROAD

TOTAL PAD GRADED AREA

TOPSOIL SALVAGE AREA

LOVELAND OFFICE

6706 North Franklin Avenue

Loveland, Colorado 80538

Phone 970-776-4331

SHERIDAN OFFICE

1095 Saberton Avenue

Sheridan, Wyoming 82801

Phone 307-674-0609

CONSULTING, LLC

1125 17th Street, Suite 550

Denver, Colorado 80202

SCALE:	1" = 300'
DATE SURVEYED:	5/22/23
DATE:	6/27/23
DRAFTER:	SRS
REVISED:	1/24/24

K:\VERDAD\2022\_200\_BRIDGE\LN\_3234\_19N\_RS9W\_SEC\_32\DWG\SPEED GOAT 3432-3435\_T9N\_RS9W\_SEC\_34.dwg, 1/24/2024 3:31:40 PM, clemens