

# **VERDAD RESOURCES**

**WATTENBERG FIELD**

**9N-58W-34 SPEED GOAT FED PAD**

**SPEED GOAT FED 3435-14H**

**Plan C**

**Plan: Permit Rev-2**

## **Standard Planning Report**

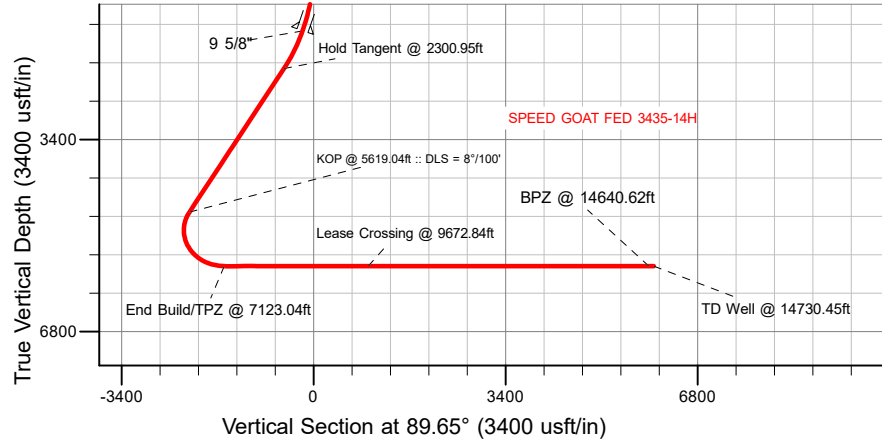
**30 January, 2024**

Project: WATTENBERG FIELD  
Site: 9N-58W-34 SPEED GOAT FED PAD  
Well: SPEED GOAT FED 3435-14H  
Wellbore: Plan C  
Design: Permit Rev-2

# VERDAD RESOURCES

## CASING DETAILS

TVD	MD	Name	Size
1474.00	1509.58	9 5/8"	9-5/8



## SECTION DETAILS

Sec	MD	Inc	Azi	TVD	+N/-S	+E/-W	Dleg	TFace	VSect	Target
1	0.00	0.00	0.00	0.00	0.00	0.00	0.00	0.00	0.00	
2	300.45	0.00	0.00	300.45	0.00	0.00	0.00	0.00	0.00	
3	2300.95	40.01	231.39	2142.28	-418.44	-523.98	2.00	231.39	-526.53	
4	5619.04	40.01	231.39	4683.72	-1749.63	-2190.94	0.00	0.00	-2201.59	
5	7123.04	90.00	89.65	5640.00	-2242.91	-1589.68	8.00	-134.16	-1583.36	
6	14730.45	90.00	89.65	5640.00	-2196.51	6037.59	0.00	0.00	6024.06	SPEED GOAT FED 3435-14H_BHL

## WELLBORE TARGET DETAILS (LAT/LONG)

Name	MD	TVD	Northing	Easting	Latitude	Longitude
SPEED GOAT FED 3435-14H_SHL	0.00	0.00	1507159.39	3459110.74	40.713774	-103.843787
SPEED GOAT FED 3435-14H_KOP	5619.04	4680.12	1505369.15	3456952.86	40.708971	-103.851690
SPEED GOAT FED 3435-14H_LP	7123.04	5640.00	1504887.72	3457583.13	40.707618	-103.849449
SPEED GOAT FED 3435-14H_LEASE CROSSING	9672.84	5640.00	1504950.98	3460132.23	40.707661	-103.840252
SPEED GOAT FED 3435-14H_BPZ	14640.62	5640.00	1505073.60	3465098.50	40.707741	-103.822334
SPEED GOAT FED 3435-14H_BHL	14730.45	5640.00	1505076.02	3465188.30	40.707743	-103.822010

SHL  
439' FNL  
961' FEL

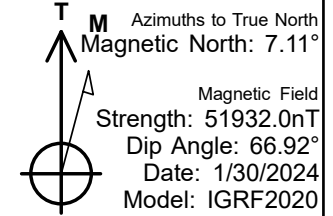
KOP  
2171' FNL  
2102' FWL

LP  
2642' FSL  
2550' FEL

LEASE CROSSING  
2632' FSL  
0' FEL

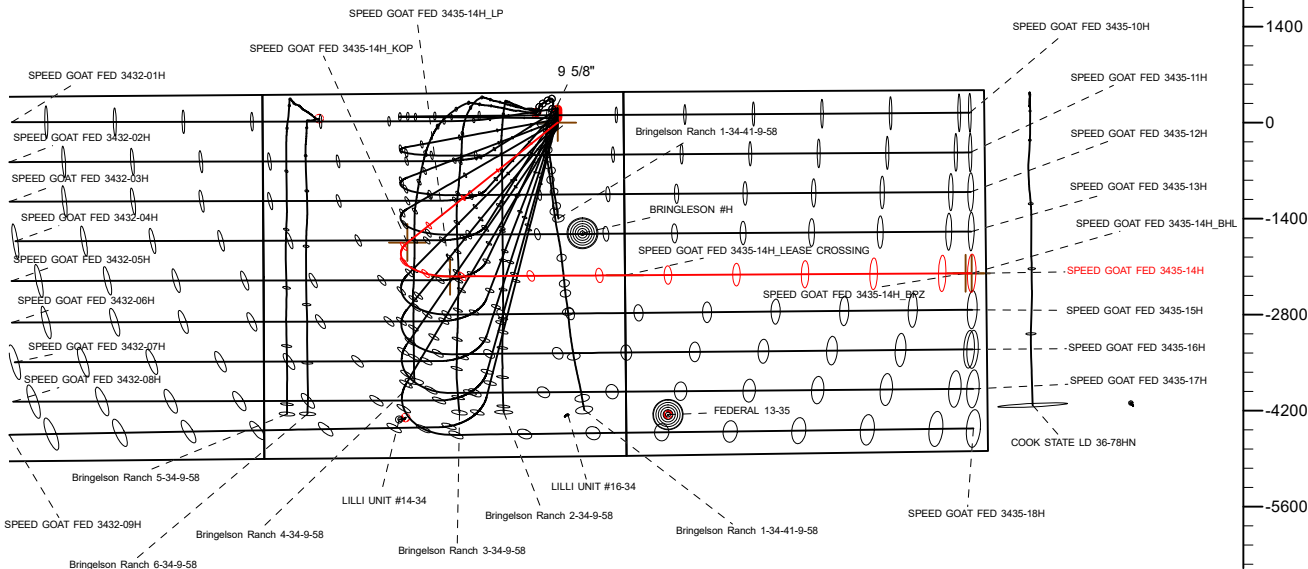
BPZ  
2595' FSL  
300' FEL

BHL  
2595' FSL  
210' FEL



West(-)/East(+) (2800 usft/in)

-7000 -5600 -4200 -2800 -1400 0 1400 2800 4200 5600 7000 8400 9800



## WELL DETAILS: SPEED GOAT FED 3435-14H

4724.00  
RKB = 20' @ 4744.00usft (RIG)

Plan: Permit Rev-2 (SPEED GOAT FED 3435-14H/Plan C)

Date: 1/30/2024

Planning Report

Database:	EDM 5000.16 Single User Db	Local Co-ordinate Reference:	Well SPEED GOAT FED 3435-14H
Company:	VERDAD RESOURCES	TVD Reference:	RKB = 20' @ 4744.00usft (RIG)
Project:	WATTENBERG FIELD	MD Reference:	RKB = 20' @ 4744.00usft (RIG)
Site:	9N-58W-34 SPEED GOAT FED PAD	North Reference:	True
Well:	SPEED GOAT FED 3435-14H	Survey Calculation Method:	Minimum Curvature
Wellbore:	Plan C		
Design:	Permit Rev-2		

Project	WATTENBERG FIELD		
Map System:	US State Plane 1983	System Datum:	Mean Sea Level
Geo Datum:	North American Datum 1983		
Map Zone:	Colorado Northern Zone		

Site		9N-58W-34 SPEED GOAT FED PAD				
Site Position:		Northing:	1,507,367.36	usft	Latitude:	40.714345
From:	Lat/Long	Easting:	3,459,105.19	usft	Longitude:	-103.843793
Position Uncertainty:		0.00	usft	Slot Radius:	13-3/16	"

Well	SPEED GOAT FED 3435-14H					
Well Position	+N/-S	0.00 usft	Northing:	1,507,159.40 usft	Latitude:	40.713774
	+E/-W	0.00 usft	Easting:	3,459,110.74 usft	Longitude:	-103.843787
Position Uncertainty		3.28 usft	Wellhead Elevation:	usft	Ground Level:	4,724.00 usft
Grid Convergence:		1.07 °				

Wellbore	Plan C				
Magnetics	Model Name	Sample Date	Declination (°)	Dip Angle (°)	Field Strength (nT)
	IGRF202013	1/30/2024	7.11	66.92	51,931.96243463

Design	Permit Rev-2				
Audit Notes:					
Version:		Phase:	PLAN	Tie On Depth:	0.00
Vertical Section:		Depth From (TVD) (usft)	+N/-S (usft)	+E/-W (usft)	Direction (°)
		0.00	0.00	0.00	89.65

Plan Survey Tool Program	Date	1/30/2024			
Depth From (usft)	Depth To (usft)	Survey (Wellbore)	Tool Name	Remarks	
1	0.00	1,474.00	Permit Rev-2 (Plan C)	ISCWSA MWD	Fixed:v2:standard declination
2	1,474.00	14,730.45	Permit Rev-2 (Plan C)	ISCWSA MWD	Fixed:v2:standard declination

Planning Report

Database:	EDM 5000.16 Single User Db	Local Co-ordinate Reference:	Well SPEED GOAT FED 3435-14H
Company:	VERDAD RESOURCES	TVD Reference:	RKB = 20' @ 4744.00usft (RIG)
Project:	WATTENBERG FIELD	MD Reference:	RKB = 20' @ 4744.00usft (RIG)
Site:	9N-58W-34 SPEED GOAT FED PAD	North Reference:	True
Well:	SPEED GOAT FED 3435-14H	Survey Calculation Method:	Minimum Curvature
Wellbore:	Plan C		
Design:	Permit Rev-2		

Plan Sections										
Measured Depth (usft)	Inclination (°)	Azimuth (°)	Vertical Depth (usft)	+N/-S (usft)	+E/-W (usft)	Dogleg Rate (°/100usft)	Build Rate (°/100usft)	Turn Rate (°/100usft)	TFO (°)	Target
0.00	0.00	0.00	0.00	0.00	0.00	0.00	0.00	0.00	0.00	
300.45	0.00	0.00	300.45	0.00	0.00	0.00	0.00	0.00	0.00	
2,300.95	40.01	231.39	2,142.28	-418.44	-523.98	2.00	2.00	0.00	231.39	
5,619.04	40.01	231.39	4,683.72	-1,749.63	-2,190.94	0.00	0.00	0.00	0.00	
7,123.04	90.00	89.65	5,640.00	-2,242.91	-1,569.68	8.00	3.32	-9.42	-134.16	
14,730.45	90.00	89.65	5,640.00	-2,196.51	6,037.59	0.00	0.00	0.00	0.00	SPEED GOAT FED 3

## Planning Report

<b>Database:</b>	EDM 5000.16 Single User Db	<b>Local Co-ordinate Reference:</b>	Well SPEED GOAT FED 3435-14H
<b>Company:</b>	VERDAD RESOURCES	<b>TVD Reference:</b>	RKB = 20' @ 4744.00usft (RIG)
<b>Project:</b>	WATTENBERG FIELD	<b>MD Reference:</b>	RKB = 20' @ 4744.00usft (RIG)
<b>Site:</b>	9N-58W-34 SPEED GOAT FED PAD	<b>North Reference:</b>	True
<b>Well:</b>	SPEED GOAT FED 3435-14H	<b>Survey Calculation Method:</b>	Minimum Curvature
<b>Wellbore:</b>	Plan C		
<b>Design:</b>	Permit Rev-2		

Planned Survey									
Measured Depth (usft)	Inclination (°)	Azimuth (°)	Vertical Depth (usft)	+N/-S (usft)	+E/-W (usft)	Vertical Section (usft)	Dogleg Rate (°/100usft)	Build Rate (°/100usft)	Turn Rate (°/100usft)
0.00	0.00	0.00	0.00	0.00	0.00	0.00	0.00	0.00	0.00
100.00	0.00	0.00	100.00	0.00	0.00	0.00	0.00	0.00	0.00
200.00	0.00	0.00	200.00	0.00	0.00	0.00	0.00	0.00	0.00
300.45	0.00	0.00	300.45	0.00	0.00	0.00	0.00	0.00	0.00
<b>Begin Nudge @ 300.45ft</b>									
400.00	1.99	231.39	399.98	-1.08	-1.35	-1.36	2.00	2.00	0.00
500.00	3.99	231.39	499.84	-4.34	-5.43	-5.45	2.00	2.00	0.00
600.00	5.99	231.39	599.45	-9.76	-12.23	-12.29	2.00	2.00	0.00
700.00	7.99	231.39	698.71	-17.36	-21.74	-21.84	2.00	2.00	0.00
800.00	9.99	231.39	797.47	-27.11	-33.95	-34.11	2.00	2.00	0.00
900.00	11.99	231.39	895.63	-39.01	-48.85	-49.08	2.00	2.00	0.00
1,000.00	13.99	231.39	993.07	-53.03	-66.41	-66.73	2.00	2.00	0.00
1,100.00	15.99	231.39	1,089.66	-69.17	-86.62	-87.04	2.00	2.00	0.00
1,200.00	17.99	231.39	1,185.29	-87.41	-109.46	-109.99	2.00	2.00	0.00
1,300.00	19.99	231.39	1,279.84	-107.71	-134.88	-135.54	2.00	2.00	0.00
1,400.00	21.99	231.39	1,373.20	-130.07	-162.87	-163.66	2.00	2.00	0.00
1,500.00	23.99	231.39	1,465.25	-154.44	-193.39	-194.33	2.00	2.00	0.00
1,509.58	24.18	231.39	1,474.00	-156.88	-196.45	-197.40	2.00	2.00	0.00
<b>9 5/8"</b>									
1,600.00	25.99	231.39	1,555.89	-180.80	-226.40	-227.50	2.00	2.00	0.00
1,700.00	27.99	231.39	1,644.99	-209.12	-261.87	-263.14	2.00	2.00	0.00
1,800.00	29.99	231.39	1,732.45	-239.36	-299.74	-301.19	2.00	2.00	0.00
1,900.00	31.99	231.39	1,818.18	-271.49	-339.97	-341.62	2.00	2.00	0.00
2,000.00	33.99	231.39	1,902.05	-305.47	-382.52	-384.38	2.00	2.00	0.00
2,100.00	35.99	231.39	1,983.97	-341.25	-427.32	-429.40	2.00	2.00	0.00
2,200.00	37.99	231.39	2,063.84	-378.79	-474.34	-476.64	2.00	2.00	0.00
2,300.95	40.01	231.39	2,142.28	-418.44	-523.98	-526.53	2.00	2.00	0.00
<b>Hold Tangent @ 2300.95ft</b>									
2,400.00	40.01	231.39	2,218.15	-458.18	-573.74	-576.53	0.00	0.00	0.00
2,500.00	40.01	231.39	2,294.74	-498.29	-623.98	-627.01	0.00	0.00	0.00
2,600.00	40.01	231.39	2,371.34	-538.41	-674.22	-677.49	0.00	0.00	0.00
2,700.00	40.01	231.39	2,447.93	-578.53	-724.46	-727.98	0.00	0.00	0.00
2,800.00	40.01	231.39	2,524.52	-618.65	-774.70	-778.46	0.00	0.00	0.00
2,900.00	40.01	231.39	2,601.12	-658.77	-824.93	-828.94	0.00	0.00	0.00
3,000.00	40.01	231.39	2,677.71	-698.89	-875.17	-879.43	0.00	0.00	0.00
3,100.00	40.01	231.39	2,754.30	-739.01	-925.41	-929.91	0.00	0.00	0.00
3,200.00	40.01	231.39	2,830.90	-779.13	-975.65	-980.39	0.00	0.00	0.00
3,300.00	40.01	231.39	2,907.49	-819.25	-1,025.89	-1,030.87	0.00	0.00	0.00
3,400.00	40.01	231.39	2,984.08	-859.37	-1,076.13	-1,081.36	0.00	0.00	0.00
3,500.00	40.01	231.39	3,060.67	-899.49	-1,126.37	-1,131.84	0.00	0.00	0.00
3,600.00	40.01	231.39	3,137.27	-939.61	-1,176.60	-1,182.32	0.00	0.00	0.00
3,700.00	40.01	231.39	3,213.86	-979.73	-1,226.84	-1,232.80	0.00	0.00	0.00
3,800.00	40.01	231.39	3,290.45	-1,019.85	-1,277.08	-1,283.29	0.00	0.00	0.00
3,900.00	40.01	231.39	3,367.05	-1,059.96	-1,327.32	-1,333.77	0.00	0.00	0.00
4,000.00	40.01	231.39	3,443.64	-1,100.08	-1,377.56	-1,384.25	0.00	0.00	0.00
4,100.00	40.01	231.39	3,520.23	-1,140.20	-1,427.80	-1,434.74	0.00	0.00	0.00
4,200.00	40.01	231.39	3,596.83	-1,180.32	-1,478.04	-1,485.22	0.00	0.00	0.00
4,300.00	40.01	231.39	3,673.42	-1,220.44	-1,528.27	-1,535.70	0.00	0.00	0.00
4,400.00	40.01	231.39	3,750.01	-1,260.56	-1,578.51	-1,586.18	0.00	0.00	0.00
4,500.00	40.01	231.39	3,826.61	-1,300.68	-1,628.75	-1,636.67	0.00	0.00	0.00
4,600.00	40.01	231.39	3,903.20	-1,340.80	-1,678.99	-1,687.15	0.00	0.00	0.00
4,700.00	40.01	231.39	3,979.79	-1,380.92	-1,729.23	-1,737.63	0.00	0.00	0.00
4,800.00	40.01	231.39	4,056.39	-1,421.04	-1,779.47	-1,788.11	0.00	0.00	0.00

# Planning Report

<b>Database:</b>	EDM 5000.16 Single User Db	<b>Local Co-ordinate Reference:</b>	Well SPEED GOAT FED 3435-14H
<b>Company:</b>	VERDAD RESOURCES	<b>TVD Reference:</b>	RKB = 20' @ 4744.00usft (RIG)
<b>Project:</b>	WATTENBERG FIELD	<b>MD Reference:</b>	RKB = 20' @ 4744.00usft (RIG)
<b>Site:</b>	9N-58W-34 SPEED GOAT FED PAD	<b>North Reference:</b>	True
<b>Well:</b>	SPEED GOAT FED 3435-14H	<b>Survey Calculation Method:</b>	Minimum Curvature
<b>Wellbore:</b>	Plan C		
<b>Design:</b>	Permit Rev-2		

Planned Survey									
Measured Depth (usft)	Inclination (°)	Azimuth (°)	Vertical Depth (usft)	+N/-S (usft)	+E/-W (usft)	Vertical Section (usft)	Dogleg Rate (°/100usft)	Build Rate (°/100usft)	Turn Rate (°/100usft)
4,900.00	40.01	231.39	4,132.98	-1,461.16	-1,829.71	-1,838.60	0.00	0.00	0.00
5,000.00	40.01	231.39	4,209.57	-1,501.28	-1,879.94	-1,889.08	0.00	0.00	0.00
5,100.00	40.01	231.39	4,286.17	-1,541.40	-1,930.18	-1,939.56	0.00	0.00	0.00
5,200.00	40.01	231.39	4,362.76	-1,581.52	-1,980.42	-1,990.05	0.00	0.00	0.00
5,300.00	40.01	231.39	4,439.35	-1,621.64	-2,030.66	-2,040.53	0.00	0.00	0.00
5,400.00	40.01	231.39	4,515.95	-1,661.75	-2,080.90	-2,091.01	0.00	0.00	0.00
5,500.00	40.01	231.39	4,592.54	-1,701.87	-2,131.14	-2,141.49	0.00	0.00	0.00
5,600.00	40.01	231.39	4,669.13	-1,741.99	-2,181.38	-2,191.98	0.00	0.00	0.00
5,619.04	40.01	231.39	4,683.72	-1,749.63	-2,190.94	-2,201.59	0.00	0.00	0.00
<b>KOP @ 5619.04ft :: DLS = 8°/100'</b>									
5,650.00	38.32	228.52	4,707.72	-1,762.20	-2,205.91	-2,216.64	8.00	-5.46	-9.26
5,700.00	35.75	223.43	4,747.64	-1,783.08	-2,227.58	-2,238.43	8.00	-5.14	-10.19
5,750.00	33.42	217.69	4,788.81	-1,804.60	-2,246.04	-2,257.03	8.00	-4.65	-11.47
5,800.00	31.40	211.25	4,831.04	-1,826.64	-2,261.23	-2,272.34	8.00	-4.06	-12.87
5,850.00	29.73	204.10	4,874.10	-1,849.09	-2,273.05	-2,284.30	8.00	-3.34	-14.31
5,900.00	28.48	196.28	4,917.81	-1,871.86	-2,281.46	-2,292.85	8.00	-2.49	-15.64
5,950.00	27.71	187.94	4,961.93	-1,894.83	-2,286.41	-2,297.94	8.00	-1.53	-16.69
6,000.00	27.47	179.31	5,006.26	-1,917.88	-2,287.87	-2,299.55	8.00	-0.49	-17.25
6,050.00	27.75	170.69	5,050.59	-1,940.91	-2,285.85	-2,297.67	8.00	0.58	-17.23
6,100.00	28.56	162.39	5,094.69	-1,963.80	-2,280.35	-2,292.30	8.00	1.61	-16.62
6,150.00	29.84	154.61	5,138.35	-1,986.44	-2,271.40	-2,283.49	8.00	2.57	-15.54
6,200.00	31.54	147.51	5,181.36	-2,008.72	-2,259.03	-2,271.26	8.00	3.40	-14.20
6,250.00	33.60	141.13	5,223.50	-2,030.53	-2,243.32	-2,255.68	8.00	4.11	-12.76
6,300.00	35.94	135.45	5,264.58	-2,051.77	-2,224.34	-2,236.83	8.00	4.69	-11.37
6,350.00	38.53	130.40	5,304.40	-2,072.33	-2,202.18	-2,214.79	8.00	5.17	-10.10
6,400.00	41.31	125.91	5,342.75	-2,092.11	-2,176.94	-2,189.68	8.00	5.56	-8.97
6,450.00	44.24	121.91	5,379.45	-2,111.02	-2,148.76	-2,161.61	8.00	5.87	-8.01
6,500.00	47.30	118.31	5,414.33	-2,128.96	-2,117.76	-2,130.73	8.00	6.12	-7.19
6,550.00	50.46	115.06	5,447.21	-2,145.84	-2,084.11	-2,097.18	8.00	6.32	-6.51
6,600.00	53.71	112.09	5,477.94	-2,161.59	-2,047.96	-2,061.12	8.00	6.49	-5.93
6,650.00	57.02	109.36	5,506.35	-2,176.13	-2,009.48	-2,022.74	8.00	6.62	-5.45
6,700.00	60.39	106.83	5,532.33	-2,189.38	-1,968.88	-1,982.22	8.00	6.73	-5.06
6,750.00	63.80	104.47	5,555.73	-2,201.29	-1,926.34	-1,939.75	8.00	6.82	-4.73
6,800.00	67.25	102.24	5,576.45	-2,211.79	-1,882.07	-1,895.55	8.00	6.90	-4.46
6,850.00	70.72	100.12	5,594.38	-2,220.83	-1,836.29	-1,849.83	8.00	6.95	-4.24
6,900.00	74.22	98.09	5,609.43	-2,228.37	-1,789.22	-1,802.80	8.00	7.00	-4.06
6,950.00	77.74	96.13	5,621.54	-2,234.37	-1,741.10	-1,754.71	8.00	7.04	-3.92
7,000.00	81.28	94.23	5,630.64	-2,238.80	-1,692.14	-1,705.79	8.00	7.07	-3.82
7,050.00	84.82	92.35	5,636.70	-2,241.64	-1,642.60	-1,656.26	8.00	7.08	-3.75
7,100.00	88.36	90.50	5,639.67	-2,242.88	-1,592.72	-1,606.39	8.00	7.09	-3.70
7,123.04	90.00	89.65	5,640.00	-2,242.91	-1,569.68	-1,583.36	8.00	7.10	-3.69
<b>End Build/TPZ @ 7123.04ft</b>									
7,200.00	90.00	89.65	5,640.00	-2,242.44	-1,492.72	-1,506.39	0.00	0.00	0.00
7,300.00	90.00	89.65	5,640.00	-2,241.83	-1,392.72	-1,406.39	0.00	0.00	0.00
7,400.00	90.00	89.65	5,640.00	-2,241.22	-1,292.72	-1,306.39	0.00	0.00	0.00
7,500.00	90.00	89.65	5,640.00	-2,240.61	-1,192.73	-1,206.39	0.00	0.00	0.00
7,600.00	90.00	89.65	5,640.00	-2,240.00	-1,092.73	-1,106.39	0.00	0.00	0.00
7,700.00	90.00	89.65	5,640.00	-2,239.39	-992.73	-1,006.39	0.00	0.00	0.00
7,800.00	90.00	89.65	5,640.00	-2,238.78	-892.73	-906.39	0.00	0.00	0.00
7,900.00	90.00	89.65	5,640.00	-2,238.17	-792.73	-806.39	0.00	0.00	0.00
8,000.00	90.00	89.65	5,640.00	-2,237.56	-692.74	-706.39	0.00	0.00	0.00
8,100.00	90.00	89.65	5,640.00	-2,236.95	-592.74	-606.39	0.00	0.00	0.00
8,200.00	90.00	89.65	5,640.00	-2,236.34	-492.74	-506.39	0.00	0.00	0.00
8,300.00	90.00	89.65	5,640.00	-2,235.73	-392.74	-406.39	0.00	0.00	0.00

## Planning Report

<b>Database:</b>	EDM 5000.16 Single User Db	<b>Local Co-ordinate Reference:</b>	Well SPEED GOAT FED 3435-14H
<b>Company:</b>	VERDAD RESOURCES	<b>TVD Reference:</b>	RKB = 20' @ 4744.00usft (RIG)
<b>Project:</b>	WATTENBERG FIELD	<b>MD Reference:</b>	RKB = 20' @ 4744.00usft (RIG)
<b>Site:</b>	9N-58W-34 SPEED GOAT FED PAD	<b>North Reference:</b>	True
<b>Well:</b>	SPEED GOAT FED 3435-14H	<b>Survey Calculation Method:</b>	Minimum Curvature
<b>Wellbore:</b>	Plan C		
<b>Design:</b>	Permit Rev-2		

Planned Survey										
Measured Depth (usft)	Inclination (°)	Azimuth (°)	Vertical Depth (usft)	+N/-S (usft)	+E/-W (usft)	Vertical Section (usft)	Dogleg Rate (°/100usft)	Build Rate (°/100usft)	Turn Rate (°/100usft)	
8,400.00	90.00	89.65	5,640.00	-2,235.13	-292.74	-306.39	0.00	0.00	0.00	
8,500.00	90.00	89.65	5,640.00	-2,234.52	-192.75	-206.39	0.00	0.00	0.00	
8,600.00	90.00	89.65	5,640.00	-2,233.91	-92.75	-106.39	0.00	0.00	0.00	
8,700.00	90.00	89.65	5,640.00	-2,233.30	7.25	-6.39	0.00	0.00	0.00	
8,800.00	90.00	89.65	5,640.00	-2,232.69	107.25	93.61	0.00	0.00	0.00	
8,900.00	90.00	89.65	5,640.00	-2,232.08	207.25	193.61	0.00	0.00	0.00	
9,000.00	90.00	89.65	5,640.00	-2,231.47	307.25	293.61	0.00	0.00	0.00	
9,100.00	90.00	89.65	5,640.00	-2,230.86	407.24	393.61	0.00	0.00	0.00	
9,200.00	90.00	89.65	5,640.00	-2,230.25	507.24	493.61	0.00	0.00	0.00	
9,300.00	90.00	89.65	5,640.00	-2,229.64	607.24	593.61	0.00	0.00	0.00	
9,400.00	90.00	89.65	5,640.00	-2,229.03	707.24	693.61	0.00	0.00	0.00	
9,500.00	90.00	89.65	5,640.00	-2,228.42	807.24	793.61	0.00	0.00	0.00	
9,600.00	90.00	89.65	5,640.00	-2,227.81	907.23	893.61	0.00	0.00	0.00	
9,672.84	90.00	89.65	5,640.00	-2,227.36	980.07	966.45	0.00	0.00	0.00	
Lease Crossing @ 9672.84ft										
9,700.00	90.00	89.65	5,640.00	-2,227.20	1,007.23	993.61	0.00	0.00	0.00	
9,800.00	90.00	89.65	5,640.00	-2,226.59	1,107.23	1,093.61	0.00	0.00	0.00	
9,900.00	90.00	89.65	5,640.00	-2,225.98	1,207.23	1,193.61	0.00	0.00	0.00	
10,000.00	90.00	89.65	5,640.00	-2,225.37	1,307.23	1,293.61	0.00	0.00	0.00	
10,100.00	90.00	89.65	5,640.00	-2,224.76	1,407.23	1,393.61	0.00	0.00	0.00	
10,200.00	90.00	89.65	5,640.00	-2,224.15	1,507.22	1,493.61	0.00	0.00	0.00	
10,300.00	90.00	89.65	5,640.00	-2,223.54	1,607.22	1,593.61	0.00	0.00	0.00	
10,400.00	90.00	89.65	5,640.00	-2,222.93	1,707.22	1,693.61	0.00	0.00	0.00	
10,500.00	90.00	89.65	5,640.00	-2,222.32	1,807.22	1,793.61	0.00	0.00	0.00	
10,600.00	90.00	89.65	5,640.00	-2,221.71	1,907.22	1,893.61	0.00	0.00	0.00	
10,700.00	90.00	89.65	5,640.00	-2,221.10	2,007.21	1,993.61	0.00	0.00	0.00	
10,800.00	90.00	89.65	5,640.00	-2,220.49	2,107.21	2,093.61	0.00	0.00	0.00	
10,900.00	90.00	89.65	5,640.00	-2,219.88	2,207.21	2,193.61	0.00	0.00	0.00	
11,000.00	90.00	89.65	5,640.00	-2,219.27	2,307.21	2,293.61	0.00	0.00	0.00	
11,100.00	90.00	89.65	5,640.00	-2,218.66	2,407.21	2,393.61	0.00	0.00	0.00	
11,200.00	90.00	89.65	5,640.00	-2,218.05	2,507.20	2,493.61	0.00	0.00	0.00	
11,300.00	90.00	89.65	5,640.00	-2,217.44	2,607.20	2,593.61	0.00	0.00	0.00	
11,400.00	90.00	89.65	5,640.00	-2,216.83	2,707.20	2,693.61	0.00	0.00	0.00	
11,500.00	90.00	89.65	5,640.00	-2,216.22	2,807.20	2,793.61	0.00	0.00	0.00	
11,600.00	90.00	89.65	5,640.00	-2,215.61	2,907.20	2,893.61	0.00	0.00	0.00	
11,700.00	90.00	89.65	5,640.00	-2,215.00	3,007.20	2,993.61	0.00	0.00	0.00	
11,800.00	90.00	89.65	5,640.00	-2,214.39	3,107.19	3,093.61	0.00	0.00	0.00	
11,900.00	90.00	89.65	5,640.00	-2,213.78	3,207.19	3,193.61	0.00	0.00	0.00	
12,000.00	90.00	89.65	5,640.00	-2,213.17	3,307.19	3,293.61	0.00	0.00	0.00	
12,100.00	90.00	89.65	5,640.00	-2,212.56	3,407.19	3,393.61	0.00	0.00	0.00	
12,200.00	90.00	89.65	5,640.00	-2,211.95	3,507.19	3,493.61	0.00	0.00	0.00	
12,300.00	90.00	89.65	5,640.00	-2,211.34	3,607.18	3,593.61	0.00	0.00	0.00	
12,400.00	90.00	89.65	5,640.00	-2,210.73	3,707.18	3,693.61	0.00	0.00	0.00	
12,500.00	90.00	89.65	5,640.00	-2,210.12	3,807.18	3,793.61	0.00	0.00	0.00	
12,600.00	90.00	89.65	5,640.00	-2,209.51	3,907.18	3,893.61	0.00	0.00	0.00	
12,700.00	90.00	89.65	5,640.00	-2,208.90	4,007.18	3,993.61	0.00	0.00	0.00	
12,800.00	90.00	89.65	5,640.00	-2,208.29	4,107.17	4,093.61	0.00	0.00	0.00	
12,900.00	90.00	89.65	5,640.00	-2,207.68	4,207.17	4,193.61	0.00	0.00	0.00	
13,000.00	90.00	89.65	5,640.00	-2,207.07	4,307.17	4,293.61	0.00	0.00	0.00	
13,100.00	90.00	89.65	5,640.00	-2,206.46	4,407.17	4,393.61	0.00	0.00	0.00	
13,200.00	90.00	89.65	5,640.00	-2,205.85	4,507.17	4,493.61	0.00	0.00	0.00	
13,300.00	90.00	89.65	5,640.00	-2,205.24	4,607.17	4,593.61	0.00	0.00	0.00	
13,400.00	90.00	89.65	5,640.00	-2,204.63	4,707.16	4,693.61	0.00	0.00	0.00	
13,500.00	90.00	89.65	5,640.00	-2,204.02	4,807.16	4,793.61	0.00	0.00	0.00	

## Planning Report

<b>Database:</b>	EDM 5000.16 Single User Db	<b>Local Co-ordinate Reference:</b>	Well SPEED GOAT FED 3435-14H
<b>Company:</b>	VERDAD RESOURCES	<b>TVD Reference:</b>	RKB = 20' @ 4744.00usft (RIG)
<b>Project:</b>	WATTENBERG FIELD	<b>MD Reference:</b>	RKB = 20' @ 4744.00usft (RIG)
<b>Site:</b>	9N-58W-34 SPEED GOAT FED PAD	<b>North Reference:</b>	True
<b>Well:</b>	SPEED GOAT FED 3435-14H	<b>Survey Calculation Method:</b>	Minimum Curvature
<b>Wellbore:</b>	Plan C		
<b>Design:</b>	Permit Rev-2		

Planned Survey									
Measured Depth (usft)	Inclination (°)	Azimuth (°)	Vertical Depth (usft)	+N/-S (usft)	+E/-W (usft)	Vertical Section (usft)	Dogleg Rate (°/100usft)	Build Rate (°/100usft)	Turn Rate (°/100usft)
13,600.00	90.00	89.65	5,640.00	-2,203.41	4,907.16	4,893.61	0.00	0.00	0.00
13,700.00	90.00	89.65	5,640.00	-2,202.80	5,007.16	4,993.61	0.00	0.00	0.00
13,800.00	90.00	89.65	5,640.00	-2,202.19	5,107.16	5,093.61	0.00	0.00	0.00
13,900.00	90.00	89.65	5,640.00	-2,201.58	5,207.15	5,193.61	0.00	0.00	0.00
14,000.00	90.00	89.65	5,640.00	-2,200.97	5,307.15	5,293.61	0.00	0.00	0.00
14,100.00	90.00	89.65	5,640.00	-2,200.36	5,407.15	5,393.61	0.00	0.00	0.00
14,200.00	90.00	89.65	5,640.00	-2,199.75	5,507.15	5,493.61	0.00	0.00	0.00
14,300.00	90.00	89.65	5,640.00	-2,199.14	5,607.15	5,593.61	0.00	0.00	0.00
14,400.00	90.00	89.65	5,640.00	-2,198.53	5,707.15	5,693.61	0.00	0.00	0.00
14,500.00	90.00	89.65	5,640.00	-2,197.92	5,807.14	5,793.61	0.00	0.00	0.00
14,600.00	90.00	89.65	5,640.00	-2,197.31	5,907.14	5,893.61	0.00	0.00	0.00
14,640.62	90.00	89.65	5,640.00	-2,197.06	5,947.76	5,934.23	0.00	0.00	0.00
BPZ @ 14640.62ft									
14,700.00	90.00	89.65	5,640.00	-2,196.70	6,007.14	5,993.61	0.00	0.00	0.00
14,730.45	90.00	89.65	5,640.00	-2,196.51	6,037.59	6,024.06	0.00	0.00	0.00
TD Well @ 14730.45ft									

Casing Points				
Measured Depth (usft)	Vertical Depth (usft)	Name	Casing Diameter (")	Hole Diameter (")
1,509.58	1,474.00	9 5/8"	9-5/8	13-1/2

Plan Annotations				
Measured Depth (usft)	Vertical Depth (usft)	Local Coordinates		Comment
		+N/-S (usft)	+E/-W (usft)	
300.45	300.45	0.00	0.00	Begin Nudge @ 300.45ft
2,300.95	2,142.28	-418.44	-523.98	Hold Tangent @ 2300.95ft
5,619.04	4,683.72	-1,749.63	-2,190.94	KOP @ 5619.04ft :: DLS = 8°/100'
7,123.04	5,640.00	-2,242.91	-1,569.68	End Build/TPZ @ 7123.04ft
9,672.84	5,640.00	-2,227.36	980.07	Lease Crossing @ 9672.84ft
14,640.62	5,640.00	-2,197.06	5,947.76	BPZ @ 14640.62ft
14,730.45	5,640.00	-2,196.51	6,037.59	TD Well @ 14730.45ft