

# **VERDAD RESOURCES**

**WATTENBERG FIELD**

**9N-58W-34 SPEED GOAT FED PAD**

**SPEED GOAT FED 3432-07H**

**Plan C**

**Permit Rev-1**

## **Anticollision Summary Report**

**25 January, 2024**

## Anticollision Summary Report

<b>Company:</b>	VERDAD RESOURCES	<b>Local Co-ordinate Reference:</b>	Well SPEED GOAT FED 3432-07H
<b>Project:</b>	WATTENBERG FIELD	<b>TVD Reference:</b>	RKB = 20' @ 4744.00usft (RIG)
<b>Reference Site:</b>	9N-58W-34 SPEED GOAT FED PAD	<b>MD Reference:</b>	RKB = 20' @ 4744.00usft (RIG)
<b>Site Error:</b>	0.00 usft	<b>North Reference:</b>	True
<b>Reference Well:</b>	SPEED GOAT FED 3432-07H	<b>Survey Calculation Method:</b>	Minimum Curvature
<b>Well Error:</b>	3.28 usft	<b>Output errors are at</b>	2.45 sigma
<b>Reference Wellbore</b>	Plan C	<b>Database:</b>	EDM 5000.16 Single User Db
<b>Reference Design:</b>	Permit Rev-1	<b>Offset TVD Reference:</b>	Offset Datum

<b>Reference</b>	Permit Rev-1		
<b>Filter type:</b>	NO GLOBAL FILTER: Using user defined selection & filtering criteria		
<b>Interpolation Method:</b>	Stations	<b>Error Model:</b>	ISCWSA
<b>Depth Range:</b>	Unlimited	<b>Scan Method:</b>	Closest Approach 3D
<b>Results Limited by:</b>	Maximum centre distance of 1,500.00usft	<b>Error Surface:</b>	Pedal Curve
<b>Warning Levels Evaluated at:</b>	2.45 Sigma	<b>Casing Method:</b>	Added to Error Values

<b>Survey Tool Program</b>	<b>Date</b>	1/25/2024			
<b>From (usft)</b>	<b>To (usft)</b>	<b>Survey (Wellbore)</b>	<b>Tool Name</b>	<b>Description</b>	
0.00	1,474.00	Permit Rev-1 (Plan C)	ISCWSA MWD	Fixed:v2:standard declination	
1,474.00	20,300.15	Permit Rev-1 (Plan C)	ISCWSA MWD	Fixed:v2:standard declination	

<b>Summary</b>						
Site Name	Reference Measured Depth (usft)	Offset Measured Depth (usft)	Distance Between Centres (usft)	Distance Between Ellipses (usft)	Separation Factor	Warning
<b>Offset Well - Wellbore - Design</b>						
9N-58W-19 TIMBRO FED 1931 PAD						
TIMBRO FED 1931-08H - Wellbore #1 - Design #4	20,300.15	15,806.52	556.95	244.97	1.785	CC, ES, SF
<b>9N-58W-31 Offsets</b>						
ST JOHNS CATHOLIC CHURCH #41-31 - Ed Davis LLC						Out of range
<b>9N-58W-32 Offsets</b>						
Bringelson 1-32-9-58 - Verdad PR Well - Actual Precision	17,161.41	6,982.32	95.99	-35.37	0.731	Level 1, CC, ES, SF
Bringelson 2-32-9-58 - Verdad PR Well - Actual Precision	15,907.50	6,928.34	102.95	-16.39	0.863	Level 1, CC, ES, SF
FEDERAL PERRY #13-32 - Diversified D/A Well - No Su	19,891.42	5,748.00	897.99	226.37	1.337	Level 3, CC
FEDERAL PERRY #13-32 - Diversified D/A Well - No Su	20,000.00	5,748.00	904.53	225.01	1.331	Level 3, ES, SF
<b>9N-58W-33 Offsets</b>						
Bringelson #42-33 - Carrizo D/A Well - No Surveys						Out of range
BRINGELSON 2-33-9-58 - Verdad PR Well - Actual Prec	12,700.00	9,365.94	51.09	-60.50	0.458	Level 1, SF
BRINGELSON 2-33-9-58 - Verdad PR Well - Actual Prec	12,709.56	9,366.27	50.19	-59.33	0.458	Level 1, CC
BRINGELSON 2-33-9-58 - Verdad PR Well - Actual Prec	12,800.00	9,369.44	103.39	-61.76	0.626	Level 1, ES
BRINGELSON 3-33-9-58 - Verdad PR Well - Actual Prec	12,060.00	9,430.15	51.96	-53.08	0.495	Level 1, CC
BRINGELSON 3-33-9-58 - Verdad PR Well - Actual Prec	12,100.00	9,428.50	65.55	-68.46	0.489	Level 1, ES, SF
BRINGELSON RANCH 33-21-9-58 - Verdad PR Well - A	13,300.00	9,298.14	97.78	-88.65	0.524	Level 1, ES
BRINGELSON RANCH 33-21-9-58 - Verdad PR Well - A	13,379.15	9,295.41	57.47	-73.36	0.439	Level 1, CC
BRINGELSON RANCH 33-21-9-58 - Verdad PR Well - A	13,400.00	9,294.70	61.14	-88.34	0.409	Level 1, SF
DENNIS #F - PEC D/A Well - No Surveys						Out of range

# Anticollision Summary Report

<b>Company:</b>	VERDAD RESOURCES	<b>Local Co-ordinate Reference:</b>	Well SPEED GOAT FED 3432-07H
<b>Project:</b>	WATTENBERG FIELD	<b>TVD Reference:</b>	RKB = 20' @ 4744.00usft (RIG)
<b>Reference Site:</b>	9N-58W-34 SPEED GOAT FED PAD	<b>MD Reference:</b>	RKB = 20' @ 4744.00usft (RIG)
<b>Site Error:</b>	0.00 usft	<b>North Reference:</b>	True
<b>Reference Well:</b>	SPEED GOAT FED 3432-07H	<b>Survey Calculation Method:</b>	Minimum Curvature
<b>Well Error:</b>	3.28 usft	<b>Output errors are at</b>	2.45 sigma
<b>Reference Wellbore</b>	Plan C	<b>Database:</b>	EDM 5000.16 Single User Db
<b>Reference Design:</b>	Permit Rev-1	<b>Offset TVD Reference:</b>	Offset Datum

Summary						
Site Name	Reference Measured Depth (usft)	Offset Measured Depth (usft)	Distance Between Centres (usft)	Distance Between Ellipses (usft)	Separation Factor	Warning
Offset Well - Wellbore - Design						
9N-58W-34 Offsets						
Bringelson Ranch 1-34-41-9-58 - Verdad Original Well - A	1,059.87	1,064.82	298.61	257.44	7.253	CC
Bringelson Ranch 1-34-41-9-58 - Verdad Original Well - A	1,200.00	1,201.30	300.29	253.81	6.461	ES
Bringelson Ranch 1-34-41-9-58 - Verdad Original Well - A	1,500.00	1,489.70	322.10	265.77	5.718	SF
Bringelson Ranch 1-34-41-9-58 - Verdad PR Well - Actua	1,059.87	1,064.82	298.61	257.44	7.253	CC
Bringelson Ranch 1-34-41-9-58 - Verdad PR Well - Actua	1,200.00	1,201.30	300.29	253.81	6.461	ES
Bringelson Ranch 1-34-41-9-58 - Verdad PR Well - Actua	1,500.00	1,489.70	322.10	265.77	5.718	SF
Bringelson Ranch 2-34-9-58 - Verdad PR Well - Actual P	0.00	8.98	311.46			
Bringelson Ranch 2-34-9-58 - Verdad PR Well - Actual P	6,750.00	9,025.15	415.38	274.80	2.955	ES
Bringelson Ranch 2-34-9-58 - Verdad PR Well - Actual P	6,800.00	9,048.20	428.36	280.97	2.906	SF
Bringelson Ranch 3-34-9-58 - Verdad PR Well - Actual P	7,161.01	9,325.19	46.63	-31.79	0.595	Level 1, CC
Bringelson Ranch 3-34-9-58 - Verdad PR Well - Actual P	7,200.00	9,333.42	60.80	-81.09	0.428	Level 1, ES, SF
Bringelson Ranch 4-34-9-58 - Verdad PR Well - Actual P	7,700.00	9,521.20	89.85	-57.16	0.611	Level 1, ES
Bringelson Ranch 4-34-9-58 - Verdad PR Well - Actual P	7,778.52	9,521.10	43.67	-27.71	0.612	Level 1, CC
Bringelson Ranch 4-34-9-58 - Verdad PR Well - Actual P	7,800.00	9,521.08	48.67	-52.57	0.481	Level 1, SF
Bringelson Ranch 5-34-9-58 - Verdad PR Well - Actual P	9,630.39	9,448.00	141.00	57.10	1.681	CC
Bringelson Ranch 5-34-9-58 - Verdad PR Well - Actual P	9,700.00	9,447.27	157.24	49.73	1.463	Level 3, ES, SF
Bringelson Ranch 6-34-9-58 - Verdad PR Well - Actual P	9,300.00	9,033.10	46.66	-79.98	0.368	Level 1, ES, SF
Bringelson Ranch 6-34-9-58 - Verdad PR Well - Actual P	9,332.98	9,032.78	33.01	-45.05	0.423	Level 1, CC
BRINGLESON #H - PEC D/A Well - No Surveys	3,742.35	3,214.24	872.59	724.01	5.873	CC
BRINGLESON #H - PEC D/A Well - No Surveys	3,800.00	3,256.36	873.47	722.51	5.786	ES
BRINGLESON #H - PEC D/A Well - No Surveys	4,100.00	3,475.56	906.11	743.86	5.585	SF
LILLI UNIT #14-34 - Noble P&A Well - Partial VES Surve	7,973.32	5,656.72	847.19	756.31	9.322	CC
LILLI UNIT #14-34 - Noble P&A Well - Partial VES Surve	8,100.00	5,660.32	856.60	752.28	8.211	ES
LILLI UNIT #14-34 - Noble P&A Well - Partial VES Surve	8,400.00	5,668.86	948.49	819.68	7.363	SF
LILLI UNIT #16-34 - Noble P&A Well - Actual VES Surve						Out of range

# Anticollision Summary Report

<b>Company:</b>	VERDAD RESOURCES	<b>Local Co-ordinate Reference:</b>	Well SPEED GOAT FED 3432-07H
<b>Project:</b>	WATTENBERG FIELD	<b>TVD Reference:</b>	RKB = 20' @ 4744.00usft (RIG)
<b>Reference Site:</b>	9N-58W-34 SPEED GOAT FED PAD	<b>MD Reference:</b>	RKB = 20' @ 4744.00usft (RIG)
<b>Site Error:</b>	0.00 usft	<b>North Reference:</b>	True
<b>Reference Well:</b>	SPEED GOAT FED 3432-07H	<b>Survey Calculation Method:</b>	Minimum Curvature
<b>Well Error:</b>	3.28 usft	<b>Output errors are at</b>	2.45 sigma
<b>Reference Wellbore</b>	Plan C	<b>Database:</b>	EDM 5000.16 Single User Db
<b>Reference Design:</b>	Permit Rev-1	<b>Offset TVD Reference:</b>	Offset Datum

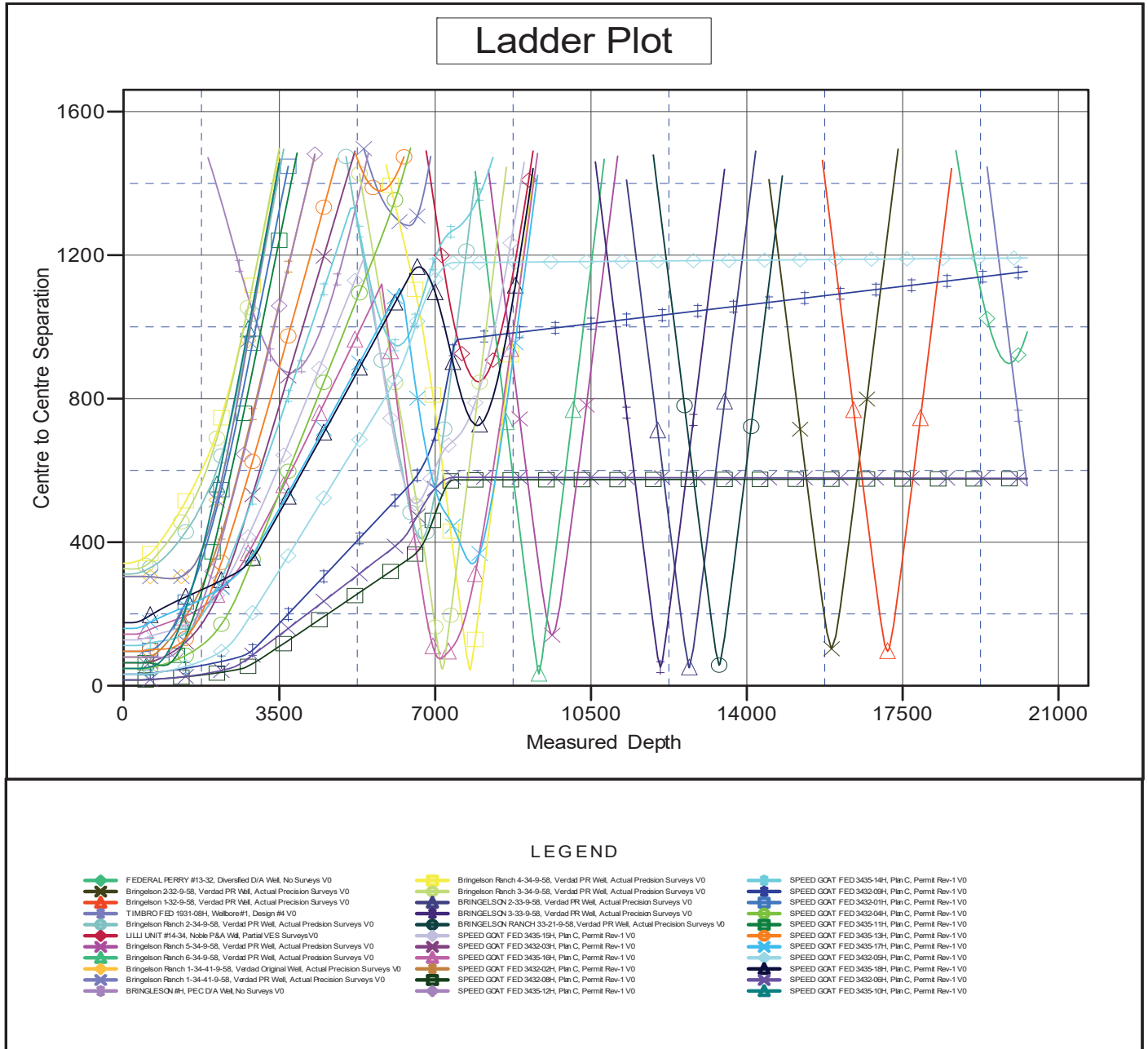
Summary						
Site Name	Reference Measured Depth (usft)	Offset Measured Depth (usft)	Distance Between Centres (usft)	Distance Between Ellipses (usft)	Separation Factor	Warning
9N-58W-34 SPEED GOAT FED PAD						
SPEED GOAT FED 3432-01H - Plan C - Permit Rev-1	475.30	475.30	95.83	87.92	12.114	CC, ES
SPEED GOAT FED 3432-01H - Plan C - Permit Rev-1	500.00	500.00	95.93	87.97	12.062	SF
SPEED GOAT FED 3432-02H - Plan C - Permit Rev-1	475.30	475.30	79.79	71.88	10.087	CC, ES
SPEED GOAT FED 3432-02H - Plan C - Permit Rev-1	500.00	500.00	79.89	71.94	10.045	SF
SPEED GOAT FED 3432-03H - Plan C - Permit Rev-1	475.30	475.30	64.12	56.21	8.107	CC, ES
SPEED GOAT FED 3432-03H - Plan C - Permit Rev-1	500.00	500.00	64.23	56.27	8.075	SF
SPEED GOAT FED 3432-04H - Plan C - Permit Rev-1	475.30	475.30	48.10	40.19	6.080	CC, ES
SPEED GOAT FED 3432-04H - Plan C - Permit Rev-1	500.00	500.00	48.20	40.24	6.060	SF
SPEED GOAT FED 3432-05H - Plan C - Permit Rev-1	475.30	475.30	32.07	24.16	4.054	CC, ES
SPEED GOAT FED 3432-05H - Plan C - Permit Rev-1	20,300.15	19,655.15	1,192.46	224.91	1.232	Level 2, SF
SPEED GOAT FED 3432-06H - Plan C - Permit Rev-1	475.30	475.30	16.04	8.13	2.027	CC
SPEED GOAT FED 3432-06H - Plan C - Permit Rev-1	20,300.15	19,959.92	578.20	-389.11	0.598	Level 1, ES, SF
SPEED GOAT FED 3432-08H - Plan C - Permit Rev-1	407.27	407.27	16.03	8.23	2.056	CC
SPEED GOAT FED 3432-08H - Plan C - Permit Rev-1	20,300.15	20,671.92	577.11	-389.65	0.597	Level 1, ES, SF
SPEED GOAT FED 3432-09H - Plan C - Permit Rev-1	400.00	400.00	32.07	24.28	4.119	CC, ES
SPEED GOAT FED 3432-09H - Plan C - Permit Rev-1	20,300.15	20,915.31	1,154.86	187.55	1.194	Level 2, SF
SPEED GOAT FED 3435-10H - Plan C - Permit Rev-1	263.80	263.81	48.09	40.47	6.313	CC
SPEED GOAT FED 3435-10H - Plan C - Permit Rev-1	300.00	300.00	48.10	40.45	6.285	ES
SPEED GOAT FED 3435-10H - Plan C - Permit Rev-1	400.00	399.73	48.49	40.71	6.231	SF
SPEED GOAT FED 3435-11H - Plan C - Permit Rev-1	894.58	888.16	56.20	47.34	6.345	CC
SPEED GOAT FED 3435-11H - Plan C - Permit Rev-1	900.00	893.43	56.20	47.33	6.336	ES, SF
SPEED GOAT FED 3435-12H - Plan C - Permit Rev-1	907.68	897.79	78.63	69.74	8.842	CC, ES
SPEED GOAT FED 3435-12H - Plan C - Permit Rev-1	1,000.00	986.81	79.73	70.57	8.703	SF
SPEED GOAT FED 3435-13H - Plan C - Permit Rev-1	300.00	300.00	96.19	88.53	12.565	CC, ES
SPEED GOAT FED 3435-13H - Plan C - Permit Rev-1	1,100.00	1,077.92	106.33	96.85	11.221	SF
SPEED GOAT FED 3435-14H - Plan C - Permit Rev-1	300.00	300.00	112.21	104.56	14.658	CC, ES
SPEED GOAT FED 3435-14H - Plan C - Permit Rev-1	6,400.00	7,651.15	976.14	876.80	9.826	SF
SPEED GOAT FED 3435-15H - Plan C - Permit Rev-1	205.85	205.85	127.88	120.31	16.888	CC
SPEED GOAT FED 3435-15H - Plan C - Permit Rev-1	300.00	299.25	127.96	120.30	16.719	ES
SPEED GOAT FED 3435-15H - Plan C - Permit Rev-1	6,700.00	7,785.34	522.77	421.64	5.169	SF
SPEED GOAT FED 3435-16H - Plan C - Permit Rev-1	7,104.96	7,766.59	75.09	-23.83	0.759	Level 1, CC
SPEED GOAT FED 3435-16H - Plan C - Permit Rev-1	7,150.00	7,725.05	77.06	-28.13	0.733	Level 1, ES, SF
SPEED GOAT FED 3435-17H - Plan C - Permit Rev-1	200.00	200.00	159.95	152.38	21.133	CC, ES
SPEED GOAT FED 3435-17H - Plan C - Permit Rev-1	8,000.00	7,170.27	368.43	231.48	2.690	SF
SPEED GOAT FED 3435-18H - Plan C - Permit Rev-1	200.00	200.00	175.98	168.41	23.251	CC, ES
SPEED GOAT FED 3435-18H - Plan C - Permit Rev-1	8,400.00	7,150.00	852.12	673.95	4.783	SF

## Anticollision Summary Report

<b>Company:</b>	VERDAD RESOURCES	<b>Local Co-ordinate Reference:</b>	Well SPEED GOAT FED 3432-07H
<b>Project:</b>	WATTENBERG FIELD	<b>TVD Reference:</b>	RKB = 20' @ 4744.00usft (RIG)
<b>Reference Site:</b>	9N-58W-34 SPEED GOAT FED PAD	<b>MD Reference:</b>	RKB = 20' @ 4744.00usft (RIG)
<b>Site Error:</b>	0.00 usft	<b>North Reference:</b>	True
<b>Reference Well:</b>	SPEED GOAT FED 3432-07H	<b>Survey Calculation Method:</b>	Minimum Curvature
<b>Well Error:</b>	3.28 usft	<b>Output errors are at</b>	2.45 sigma
<b>Reference Wellbore</b>	Plan C	<b>Database:</b>	EDM 5000.16 Single User Db
<b>Reference Design:</b>	Permit Rev-1	<b>Offset TVD Reference:</b>	Offset Datum

Reference Depths are relative to RKB = 20' @ 4744.00usft (RIG)  
Offset Depths are relative to Offset Datum  
Central Meridian is -105.500000

Coordinates are relative to: SPEED GOAT FED 3432-07H  
Coordinate System is US State Plane 1983, Colorado Northern Zone  
Grid Convergence at Surface is: 1.07°



## Anticollision Summary Report

<b>Company:</b>	VERDAD RESOURCES	<b>Local Co-ordinate Reference:</b>	Well SPEED GOAT FED 3432-07H
<b>Project:</b>	WATTENBERG FIELD	<b>TVD Reference:</b>	RKB = 20' @ 4744.00usft (RIG)
<b>Reference Site:</b>	9N-58W-34 SPEED GOAT FED PAD	<b>MD Reference:</b>	RKB = 20' @ 4744.00usft (RIG)
<b>Site Error:</b>	0.00 usft	<b>North Reference:</b>	True
<b>Reference Well:</b>	SPEED GOAT FED 3432-07H	<b>Survey Calculation Method:</b>	Minimum Curvature
<b>Well Error:</b>	3.28 usft	<b>Output errors are at</b>	2.45 sigma
<b>Reference Wellbore</b>	Plan C	<b>Database:</b>	EDM 5000.16 Single User Db
<b>Reference Design:</b>	Permit Rev-1	<b>Offset TVD Reference:</b>	Offset Datum

Reference Depths are relative to RKB = 20' @ 4744.00usft (RIG)

Offset Depths are relative to Offset Datum

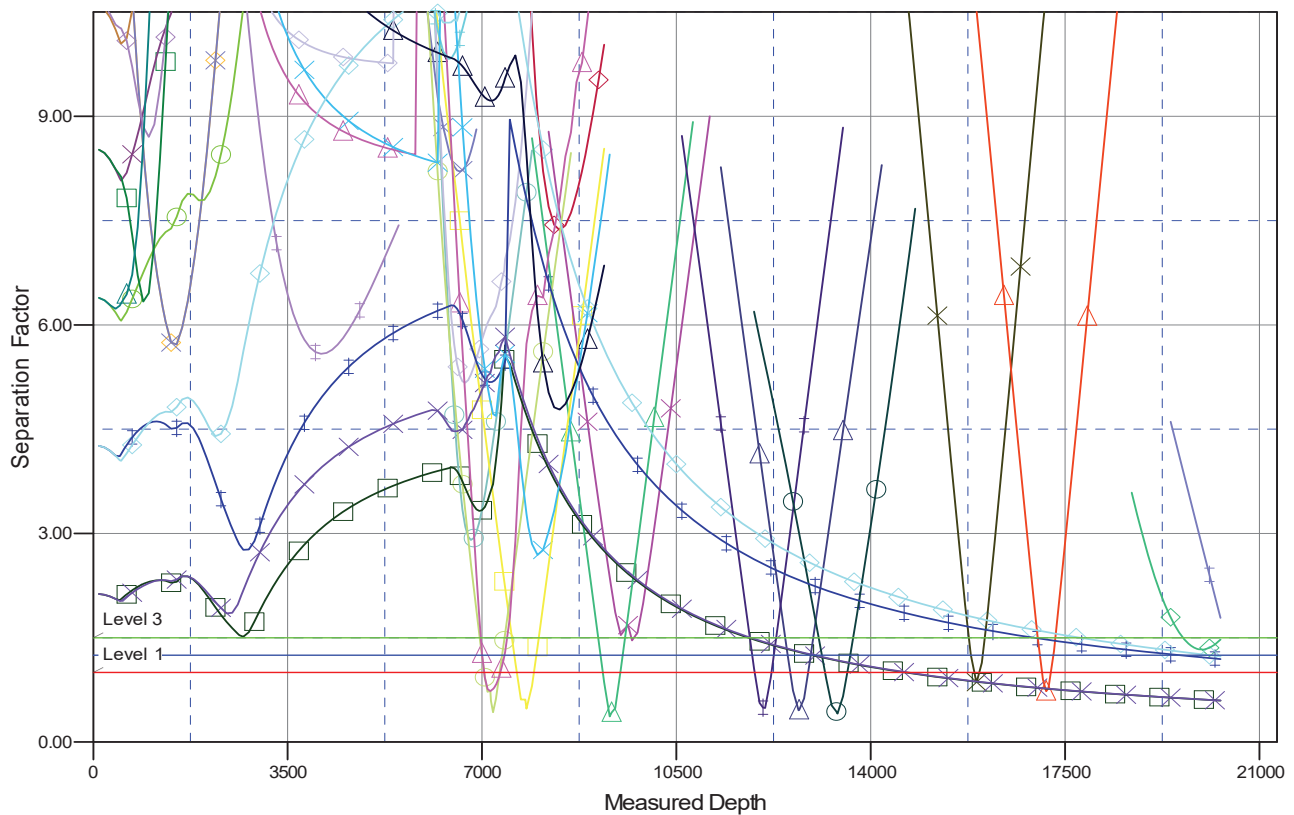
Central Meridian is -105.500000

Coordinates are relative to: SPEED GOAT FED 3432-07H

Coordinate System is US State Plane 1983, Colorado Northern Zone

Grid Convergence at Surface is: 1.07°

### Separation Factor Plot



#### LEGEND

FEDERAL FERRY #13-32, Diversified D/A Well, No Surveys V0	Bringleton Ranch 4-34-9-58, Verdard PR Well, Actual Precision Surveys V0	SPEED GOAT FED 3435-14H, Plan C, Permit Rev-1 V0
Bringleton 232-9-58, Verdard PR Well, Actual Precision Surveys V0	Bringleton Ranch 3-34-9-58, Verdard PR Well, Actual Precision Surveys V0	SPEED GOAT FED 3432-06H, Plan C, Permit Rev-1 V0
Bringleton 132-9-58, Verdard PR Well, Actual Precision Surveys V0	BRINGELSON 2-33-9-58, Verdard PR Well, Actual Precision Surveys V0	SPEED GOAT FED 3432-01H, Plan C, Permit Rev-1 V0
TIMBROFED 1931-08H, Wellbore #1, Design #4 V0	BRINGELSON 3-33-9-58, Verdard PR Well, Actual Precision Surveys V0	SPEED GOAT FED 3432-04H, Plan C, Permit Rev-1 V0
Bringleton Ranch 2-34-9-58, Verdard PR Well, Actual Precision Surveys V0	BRINGELSON RANCH 33-21-9-58, Verdard PR Well, Actual Precision Surveys V0	SPEED GOAT FED 3435-11H, Plan C, Permit Rev-1 V0
LILLI UNIT #14-34, Noble P&A Well, Partial VES Surveys V0	SPEED GOAT FED 3435-15H, Plan C, Permit Rev-1 V0	SPEED GOAT FED 3435-13H, Plan C, Permit Rev-1 V0
Bringleton Ranch 5-34-9-58, Verdard PR Well, Actual Precision Surveys V0	SPEED GOAT FED 3432-03H, Plan C, Permit Rev-1 V0	SPEED GOAT FED 3435-17H, Plan C, Permit Rev-1 V0
Bringleton Ranch 6-34-9-58, Verdard PR Well, Actual Precision Surveys V0	SPEED GOAT FED 3435-19H, Plan C, Permit Rev-1 V0	SPEED GOAT FED 3432-05H, Plan C, Permit Rev-1 V0
Bringleton Ranch 1-34-41-9-58, Verdard Original Well, Actual Precision Surveys V0	SPEED GOAT FED 3432-02H, Plan C, Permit Rev-1 V0	SPEED GOAT FED 3435-18H, Plan C, Permit Rev-1 V0
Bringleton Ranch 1-34-41-9-58, Verdard PR Well, Actual Precision Surveys V0	SPEED GOAT FED 3432-08H, Plan C, Permit Rev-1 V0	SPEED GOAT FED 3432-06H, Plan C, Permit Rev-1 V0
BRINGELSON #H, PEC D/A Well, No Surveys V0	SPEED GOAT FED 3435-12H, Plan C, Permit Rev-1 V0	SPEED GOAT FED 3435-10H, Plan C, Permit Rev-1 V0