

VERDAD RESOURCES

WATTENBERG FIELD

9N-58W-34 SPEED GOAT FED PAD

SPEED GOAT FED 3432-05H

Plan C

Plan: Permit Rev-1

Standard Planning Report

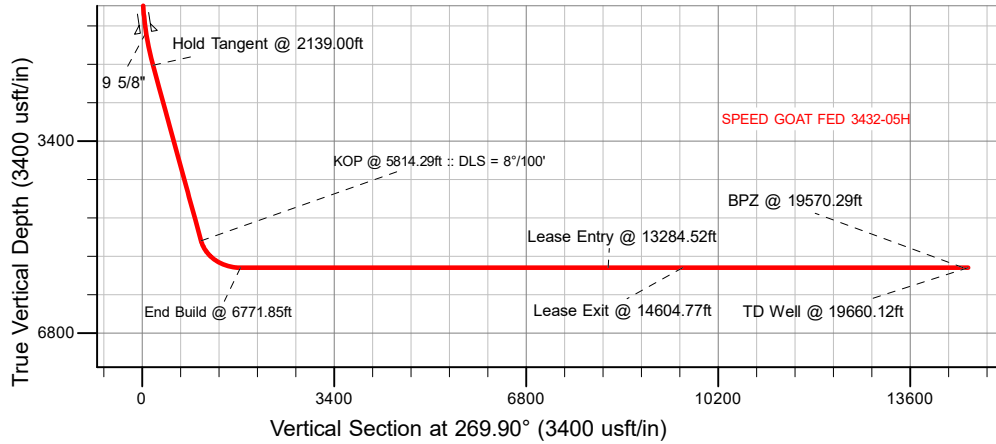
25 January, 2024

Project: WATTENBERG FIELD
Site: 9N-58W-34 SPEED GOAT FED PAD
Well: SPEED GOAT FED 3432-05H
Wellbore: Plan C
Design: Permit Rev-1

VERDAD RESOURCES

CASING DETAILS

TVD	MD	Name	Size
1474.00	1492.30	9 5/8"	9-5/8



SECTION DETAILS

Sec	MD	Inc	Azi	TVD	+N-S	+E-W	Dleg	TFace	Vsect	Target
1	0.00	0.00	0.00	0.00	0.00	0.00	0.00	0.00	0.00	
2	524.50	0.00	0.00	524.50	0.00	0.00	0.00	0.00	0.00	
3	2139.00	32.29	205.60	2054.88	-399.53	-191.42	2.00	205.60	192.12	
4	5814.29	32.29	205.60	5161.81	-2170.15	-1039.76	0.00	0.00	1043.55	
5	6771.85	90.00	269.90	5640.00	-2443.66	-1736.00	8.00	67.86	1740.26	
6	19660.12	90.00	269.90	5640.00	-2466.15	-14624.25	0.00	0.00	14628.53	SPEED GOAT FED 3432-05H_BHL

WELLBORE TARGET DETAILS (LAT/LONG)

Name	MD	TVD	Northing	Easting	Latitude	Longitude
SPEED GOAT FED 3432-05H_SHL	0.00	0.00	1507303.62	3459106.94	40.714170	-103.843791
SPEED GOAT FED 3432-05H_KOP	5814.29	5161.81	1505114.43	3458107.89	40.708213	-103.847541
SPEED GOAT FED 3432-05H_LP	6771.85	5640.00	1504827.96	3457416.88	40.707462	-103.850053
SPEED GOAT FED 3432-05H_Lease Entry	13284.52	5640.00	1504695.45	3450905.56	40.707429	-103.873543
SPEED GOAT FED 3432-05H_Lease Exit	14604.77	5640.00	1504668.36	3449585.58	40.707421	-103.878305
SPEED GOAT FED 3432-05H_BPZ	19570.29	5640.00	1504567.49	3444621.09	40.707392	-103.896215
SPEED GOAT FED 3432-05H_BHL	19660.12	5640.00	1504564.78	3444531.30	40.707389	-103.896539

SHL
295' FNL
961' FEL

KOP
2457' FNL
2019' FEL

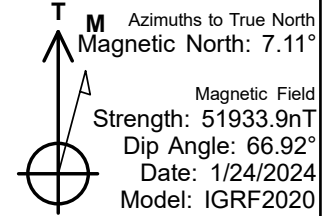
LP
2586' FSL
2550' FWL

LEASE ENTRY
2631' FSL
1320' FWL

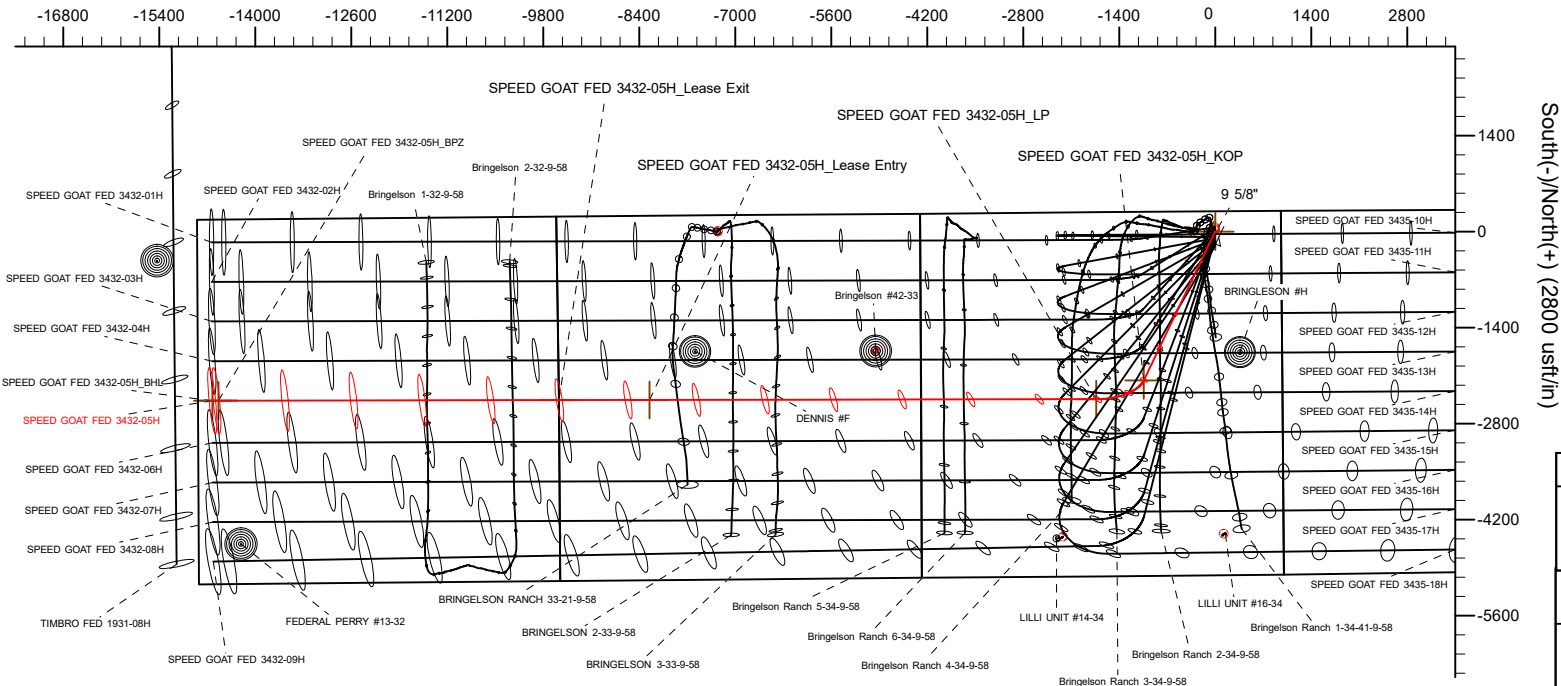
LEASE EXIT
2640' FSL
0' FEL

BPZ
2640' FNL
300' FWL

BHL
2640' FNL
210' FWL



West(-)/East(+) (2800 usft/in)



South(-)/North(+) (2800 usft/in)

WELL DETAILS: SPEED GOAT FED 3432-05H

GL = 4724'
RKB = 20' @ 4744.00usft (RIG)

Plan: Permit Rev-1 (SPEED GOAT FED 3432-05H/Plan C)

Date: 1/25/2024

Planning Report

Database:	EDM 5000.16 Single User Db	Local Co-ordinate Reference:	Well SPEED GOAT FED 3432-05H
Company:	VERDAD RESOURCES	TVD Reference:	RKB = 20' @ 4744.00usft (RIG)
Project:	WATTENBERG FIELD	MD Reference:	RKB = 20' @ 4744.00usft (RIG)
Site:	9N-58W-34 SPEED GOAT FED PAD	North Reference:	True
Well:	SPEED GOAT FED 3432-05H	Survey Calculation Method:	Minimum Curvature
Wellbore:	Plan C		
Design:	Permit Rev-1		

Project	WATTENBERG FIELD		
Map System:	US State Plane 1983	System Datum:	Mean Sea Level
Geo Datum:	North American Datum 1983		
Map Zone:	Colorado Northern Zone		

Site	9N-58W-34 SPEED GOAT FED PAD		
Site Position:		Northing:	1,507,367.36 usft
From:	Lat/Long	Easting:	3,459,105.19 usft
Position Uncertainty:	0.00 usft	Slot Radius:	13-3/16 "
		Latitude:	40.714345
		Longitude:	-103.843793

Well	SPEED GOAT FED 3432-05H					
Well Position	+N/-S	0.00 usft	Northing:	1,507,303.62 usft	Latitude:	40.714170
	+E/-W	0.00 usft	Easting:	3,459,106.94 usft	Longitude:	-103.843791
Position Uncertainty	3.28 usft		Wellhead Elevation:	usft	Ground Level:	4,724.00 usft
Grid Convergence:	1.07 °					

Wellbore	Plan C				
Magnetics	Model Name	Sample Date	Declination (°)	Dip Angle (°)	Field Strength (nT)
	IGRF202013	1/24/2024	7.11	66.92	51,933.90026586

Design	Permit Rev-1				
Audit Notes:					
Version:	Phase:	PLAN	Tie On Depth:	0.00	
Vertical Section:	Depth From (TVD) (usft)	+N/-S (usft)	+E/-W (usft)	Direction (°)	
	0.00	0.00	0.00	269.90	

Plan Survey Tool Program	Date	1/25/2024			
Depth From (usft)	Depth To (usft)	Survey (Wellbore)	Tool Name	Remarks	
1	0.00	1,474.00	Permit Rev-1 (Plan C)	ISCWSA MWD	Fixed:v2:standard declination
2	1,474.00	19,660.12	Permit Rev-1 (Plan C)	ISCWSA MWD	Fixed:v2:standard declination

Planning Report

Database:	EDM 5000.16 Single User Db	Local Co-ordinate Reference:	Well SPEED GOAT FED 3432-05H
Company:	VERDAD RESOURCES	TVD Reference:	RKB = 20' @ 4744.00usft (RIG)
Project:	WATTENBERG FIELD	MD Reference:	RKB = 20' @ 4744.00usft (RIG)
Site:	9N-58W-34 SPEED GOAT FED PAD	North Reference:	True
Well:	SPEED GOAT FED 3432-05H	Survey Calculation Method:	Minimum Curvature
Wellbore:	Plan C		
Design:	Permit Rev-1		

Plan Sections										
Measured Depth (usft)	Inclination (°)	Azimuth (°)	Vertical Depth (usft)	+N/-S (usft)	+E/-W (usft)	Dogleg Rate (°/100usft)	Build Rate (°/100usft)	Turn Rate (°/100usft)	TFO (°)	Target
0.00	0.00	0.00	0.00	0.00	0.00	0.00	0.00	0.00	0.00	
524.50	0.00	0.00	524.50	0.00	0.00	0.00	0.00	0.00	0.00	
2,139.00	32.29	205.60	2,054.88	-399.53	-191.42	2.00	2.00	0.00	205.60	
5,814.29	32.29	205.60	5,161.81	-2,170.15	-1,039.76	0.00	0.00	0.00	0.00	
6,771.85	90.00	269.90	5,640.00	-2,443.66	-1,736.00	8.00	6.03	6.71	67.86	
19,660.12	90.00	269.90	5,640.00	-2,466.15	-14,624.25	0.00	0.00	0.00	0.00	SPEED GOAT FED 3

Planning Report

Database:	EDM 5000.16 Single User Db	Local Co-ordinate Reference:	Well SPEED GOAT FED 3432-05H
Company:	VERDAD RESOURCES	TVD Reference:	RKB = 20' @ 4744.00usft (RIG)
Project:	WATTENBERG FIELD	MD Reference:	RKB = 20' @ 4744.00usft (RIG)
Site:	9N-58W-34 SPEED GOAT FED PAD	North Reference:	True
Well:	SPEED GOAT FED 3432-05H	Survey Calculation Method:	Minimum Curvature
Wellbore:	Plan C		
Design:	Permit Rev-1		

Planned Survey									
Measured Depth (usft)	Inclination (°)	Azimuth (°)	Vertical Depth (usft)	+N/-S (usft)	+E/-W (usft)	Vertical Section (usft)	Dogleg Rate (°/100usft)	Build Rate (°/100usft)	Turn Rate (°/100usft)
0.00	0.00	0.00	0.00	0.00	0.00	0.00	0.00	0.00	0.00
100.00	0.00	0.00	100.00	0.00	0.00	0.00	0.00	0.00	0.00
200.00	0.00	0.00	200.00	0.00	0.00	0.00	0.00	0.00	0.00
300.00	0.00	0.00	300.00	0.00	0.00	0.00	0.00	0.00	0.00
400.00	0.00	0.00	400.00	0.00	0.00	0.00	0.00	0.00	0.00
500.00	0.00	0.00	500.00	0.00	0.00	0.00	0.00	0.00	0.00
524.50	0.00	0.00	524.50	0.00	0.00	0.00	0.00	0.00	0.00
Begin Nudge @ 524.50ft									
600.00	1.51	205.60	599.99	-0.90	-0.43	0.43	2.00	2.00	0.00
700.00	3.51	205.60	699.89	-4.85	-2.32	2.33	2.00	2.00	0.00
800.00	5.51	205.60	799.58	-11.94	-5.72	5.74	2.00	2.00	0.00
900.00	7.51	205.60	898.93	-22.16	-10.62	10.66	2.00	2.00	0.00
1,000.00	9.51	205.60	997.82	-35.51	-17.01	17.07	2.00	2.00	0.00
1,100.00	11.51	205.60	1,096.14	-51.96	-24.89	24.98	2.00	2.00	0.00
1,200.00	13.51	205.60	1,193.76	-71.49	-34.25	34.38	2.00	2.00	0.00
1,300.00	15.51	205.60	1,290.56	-94.08	-45.08	45.24	2.00	2.00	0.00
1,400.00	17.51	205.60	1,386.44	-119.71	-57.36	57.56	2.00	2.00	0.00
1,492.30	19.36	205.60	1,474.00	-146.03	-69.97	70.22	2.00	2.00	0.00
9 5/8"									
1,500.00	19.51	205.60	1,481.26	-148.34	-71.07	71.33	2.00	2.00	0.00
1,600.00	21.51	205.60	1,574.91	-179.94	-86.21	86.52	2.00	2.00	0.00
1,700.00	23.51	205.60	1,667.29	-214.46	-102.75	103.13	2.00	2.00	0.00
1,800.00	25.51	205.60	1,758.27	-251.87	-120.68	121.12	2.00	2.00	0.00
1,900.00	27.51	205.60	1,847.76	-292.12	-139.96	140.47	2.00	2.00	0.00
2,000.00	29.51	205.60	1,935.62	-335.17	-160.58	161.17	2.00	2.00	0.00
2,100.00	31.51	205.60	2,021.77	-380.95	-182.52	183.18	2.00	2.00	0.00
2,139.00	32.29	205.60	2,054.88	-399.53	-191.42	192.12	2.00	2.00	0.00
Hold Tangent @ 2139.00ft									
2,200.00	32.29	205.60	2,106.45	-428.92	-205.50	206.25	0.00	0.00	0.00
2,300.00	32.29	205.60	2,190.99	-477.10	-228.59	229.42	0.00	0.00	0.00
2,400.00	32.29	205.60	2,275.52	-525.27	-251.67	252.59	0.00	0.00	0.00
2,500.00	32.29	205.60	2,360.06	-573.45	-274.75	275.75	0.00	0.00	0.00
2,600.00	32.29	205.60	2,444.59	-621.63	-297.83	298.92	0.00	0.00	0.00
2,700.00	32.29	205.60	2,529.13	-669.80	-320.92	322.08	0.00	0.00	0.00
2,800.00	32.29	205.60	2,613.66	-717.98	-344.00	345.25	0.00	0.00	0.00
2,900.00	32.29	205.60	2,698.20	-766.16	-367.08	368.42	0.00	0.00	0.00
3,000.00	32.29	205.60	2,782.73	-814.33	-390.16	391.58	0.00	0.00	0.00
3,100.00	32.29	205.60	2,867.27	-862.51	-413.25	414.75	0.00	0.00	0.00
3,200.00	32.29	205.60	2,951.81	-910.69	-436.33	437.92	0.00	0.00	0.00
3,300.00	32.29	205.60	3,036.34	-958.86	-459.41	461.08	0.00	0.00	0.00
3,400.00	32.29	205.60	3,120.88	-1,007.04	-482.49	484.25	0.00	0.00	0.00
3,500.00	32.29	205.60	3,205.41	-1,055.21	-505.57	507.41	0.00	0.00	0.00
3,600.00	32.29	205.60	3,289.95	-1,103.39	-528.66	530.58	0.00	0.00	0.00
3,700.00	32.29	205.60	3,374.48	-1,151.57	-551.74	553.75	0.00	0.00	0.00
3,800.00	32.29	205.60	3,459.02	-1,199.74	-574.82	576.91	0.00	0.00	0.00
3,900.00	32.29	205.60	3,543.55	-1,247.92	-597.90	600.08	0.00	0.00	0.00
4,000.00	32.29	205.60	3,628.09	-1,296.10	-620.99	623.25	0.00	0.00	0.00
4,100.00	32.29	205.60	3,712.63	-1,344.27	-644.07	646.41	0.00	0.00	0.00
4,200.00	32.29	205.60	3,797.16	-1,392.45	-667.15	669.58	0.00	0.00	0.00
4,300.00	32.29	205.60	3,881.70	-1,440.62	-690.23	692.75	0.00	0.00	0.00
4,400.00	32.29	205.60	3,966.23	-1,488.80	-713.31	715.91	0.00	0.00	0.00
4,500.00	32.29	205.60	4,050.77	-1,536.98	-736.40	739.08	0.00	0.00	0.00
4,600.00	32.29	205.60	4,135.30	-1,585.15	-759.48	762.24	0.00	0.00	0.00

Planning Report

Database:	EDM 5000.16 Single User Db	Local Co-ordinate Reference:	Well SPEED GOAT FED 3432-05H
Company:	VERDAD RESOURCES	TVD Reference:	RKB = 20' @ 4744.00usft (RIG)
Project:	WATTENBERG FIELD	MD Reference:	RKB = 20' @ 4744.00usft (RIG)
Site:	9N-58W-34 SPEED GOAT FED PAD	North Reference:	True
Well:	SPEED GOAT FED 3432-05H	Survey Calculation Method:	Minimum Curvature
Wellbore:	Plan C		
Design:	Permit Rev-1		

Planned Survey									
Measured Depth (usft)	Inclination (°)	Azimuth (°)	Vertical Depth (usft)	+N/-S (usft)	+E/-W (usft)	Vertical Section (usft)	Dogleg Rate (°/100usft)	Build Rate (°/100usft)	Turn Rate (°/100usft)
4,700.00	32.29	205.60	4,219.84	-1,633.33	-782.56	785.41	0.00	0.00	0.00
4,800.00	32.29	205.60	4,304.37	-1,681.51	-805.64	808.58	0.00	0.00	0.00
4,900.00	32.29	205.60	4,388.91	-1,729.68	-828.73	831.74	0.00	0.00	0.00
5,000.00	32.29	205.60	4,473.45	-1,777.86	-851.81	854.91	0.00	0.00	0.00
5,100.00	32.29	205.60	4,557.98	-1,826.04	-874.89	878.08	0.00	0.00	0.00
5,200.00	32.29	205.60	4,642.52	-1,874.21	-897.97	901.24	0.00	0.00	0.00
5,300.00	32.29	205.60	4,727.05	-1,922.39	-921.05	924.41	0.00	0.00	0.00
5,400.00	32.29	205.60	4,811.59	-1,970.56	-944.14	947.57	0.00	0.00	0.00
5,500.00	32.29	205.60	4,896.12	-2,018.74	-967.22	970.74	0.00	0.00	0.00
5,600.00	32.29	205.60	4,980.66	-2,066.92	-990.30	993.91	0.00	0.00	0.00
5,700.00	32.29	205.60	5,065.19	-2,115.09	-1,013.38	1,017.07	0.00	0.00	0.00
5,800.00	32.29	205.60	5,149.73	-2,163.27	-1,036.47	1,040.24	0.00	0.00	0.00
5,814.29	32.29	205.60	5,161.81	-2,170.15	-1,039.76	1,043.55	0.00	0.00	0.00
KOP @ 5814.29ft :: DLS = 8°/100'									
5,850.00	33.46	210.40	5,191.81	-2,187.25	-1,048.87	1,052.68	8.00	3.28	13.45
5,900.00	35.39	216.61	5,233.06	-2,210.77	-1,064.48	1,068.34	8.00	3.85	12.41
5,950.00	37.60	222.22	5,273.27	-2,233.70	-1,083.37	1,087.27	8.00	4.43	11.21
6,000.00	40.05	227.26	5,312.23	-2,255.92	-1,105.45	1,109.38	8.00	4.90	10.09
6,050.00	42.70	231.80	5,349.75	-2,277.33	-1,130.59	1,134.57	8.00	5.30	9.07
6,100.00	45.51	235.89	5,385.66	-2,297.83	-1,158.69	1,162.70	8.00	5.62	8.18
6,150.00	48.45	239.60	5,419.77	-2,317.30	-1,189.61	1,193.65	8.00	5.89	7.41
6,200.00	51.51	242.97	5,451.93	-2,335.67	-1,223.19	1,227.27	8.00	6.10	6.76
6,250.00	54.65	246.07	5,481.97	-2,352.84	-1,259.27	1,263.38	8.00	6.28	6.20
6,300.00	57.86	248.94	5,509.74	-2,368.72	-1,297.68	1,301.81	8.00	6.43	5.73
6,350.00	61.13	251.61	5,535.12	-2,383.25	-1,338.23	1,342.38	8.00	6.55	5.34
6,400.00	64.46	254.11	5,557.98	-2,396.34	-1,380.71	1,384.89	8.00	6.65	5.01
6,450.00	67.82	256.48	5,578.21	-2,407.93	-1,424.93	1,429.14	8.00	6.73	4.74
6,500.00	71.22	258.73	5,595.70	-2,417.97	-1,470.67	1,474.89	8.00	6.79	4.51
6,550.00	74.64	260.90	5,610.38	-2,426.41	-1,517.71	1,521.94	8.00	6.84	4.33
6,600.00	78.08	263.00	5,622.17	-2,433.21	-1,565.81	1,570.06	8.00	6.88	4.19
6,650.00	81.54	265.04	5,631.01	-2,438.33	-1,614.74	1,619.00	8.00	6.92	4.09
6,700.00	85.01	267.05	5,636.87	-2,441.75	-1,664.27	1,668.53	8.00	6.94	4.01
6,750.00	88.48	269.03	5,639.71	-2,443.46	-1,714.15	1,718.41	8.00	6.95	3.97
6,771.85	90.00	269.90	5,640.00	-2,443.66	-1,736.00	1,740.26	8.00	6.95	3.96
End Build @ 6771.85ft									
6,800.00	90.00	269.90	5,640.00	-2,443.71	-1,764.15	1,768.41	0.00	0.00	0.00
6,900.00	90.00	269.90	5,640.00	-2,443.88	-1,864.15	1,868.41	0.00	0.00	0.00
7,000.00	90.00	269.90	5,640.00	-2,444.06	-1,964.15	1,968.41	0.00	0.00	0.00
7,100.00	90.00	269.90	5,640.00	-2,444.23	-2,064.15	2,068.41	0.00	0.00	0.00
7,200.00	90.00	269.90	5,640.00	-2,444.41	-2,164.15	2,168.41	0.00	0.00	0.00
7,300.00	90.00	269.90	5,640.00	-2,444.58	-2,264.15	2,268.41	0.00	0.00	0.00
7,400.00	90.00	269.90	5,640.00	-2,444.76	-2,364.15	2,368.41	0.00	0.00	0.00
7,500.00	90.00	269.90	5,640.00	-2,444.93	-2,464.15	2,468.41	0.00	0.00	0.00
7,600.00	90.00	269.90	5,640.00	-2,445.11	-2,564.15	2,568.41	0.00	0.00	0.00
7,700.00	90.00	269.90	5,640.00	-2,445.28	-2,664.15	2,668.41	0.00	0.00	0.00
7,800.00	90.00	269.90	5,640.00	-2,445.45	-2,764.15	2,768.41	0.00	0.00	0.00
7,900.00	90.00	269.90	5,640.00	-2,445.63	-2,864.15	2,868.41	0.00	0.00	0.00
8,000.00	90.00	269.90	5,640.00	-2,445.80	-2,964.15	2,968.41	0.00	0.00	0.00
8,100.00	90.00	269.90	5,640.00	-2,445.98	-3,064.15	3,068.41	0.00	0.00	0.00
8,200.00	90.00	269.90	5,640.00	-2,446.15	-3,164.15	3,168.41	0.00	0.00	0.00
8,300.00	90.00	269.90	5,640.00	-2,446.33	-3,264.15	3,268.41	0.00	0.00	0.00
8,400.00	90.00	269.90	5,640.00	-2,446.50	-3,364.15	3,368.41	0.00	0.00	0.00
8,500.00	90.00	269.90	5,640.00	-2,446.68	-3,464.15	3,468.41	0.00	0.00	0.00
8,600.00	90.00	269.90	5,640.00	-2,446.85	-3,564.15	3,568.41	0.00	0.00	0.00

Planning Report

Database:	EDM 5000.16 Single User Db	Local Co-ordinate Reference:	Well SPEED GOAT FED 3432-05H
Company:	VERDAD RESOURCES	TVD Reference:	RKB = 20' @ 4744.00usft (RIG)
Project:	WATTENBERG FIELD	MD Reference:	RKB = 20' @ 4744.00usft (RIG)
Site:	9N-58W-34 SPEED GOAT FED PAD	North Reference:	True
Well:	SPEED GOAT FED 3432-05H	Survey Calculation Method:	Minimum Curvature
Wellbore:	Plan C		
Design:	Permit Rev-1		

Planned Survey										
Measured Depth (usft)	Inclination (°)	Azimuth (°)	Vertical Depth (usft)	+N/-S (usft)	+E/-W (usft)	Vertical Section (usft)	Dogleg Rate (°/100usft)	Build Rate (°/100usft)	Turn Rate (°/100usft)	
8,700.00	90.00	269.90	5,640.00	-2,447.02	-3,664.15	3,668.41	0.00	0.00	0.00	
8,800.00	90.00	269.90	5,640.00	-2,447.20	-3,764.15	3,768.41	0.00	0.00	0.00	
8,900.00	90.00	269.90	5,640.00	-2,447.37	-3,864.15	3,868.41	0.00	0.00	0.00	
9,000.00	90.00	269.90	5,640.00	-2,447.55	-3,964.15	3,968.41	0.00	0.00	0.00	
9,100.00	90.00	269.90	5,640.00	-2,447.72	-4,064.15	4,068.41	0.00	0.00	0.00	
9,200.00	90.00	269.90	5,640.00	-2,447.90	-4,164.14	4,168.41	0.00	0.00	0.00	
9,300.00	90.00	269.90	5,640.00	-2,448.07	-4,264.14	4,268.41	0.00	0.00	0.00	
9,400.00	90.00	269.90	5,640.00	-2,448.25	-4,364.14	4,368.41	0.00	0.00	0.00	
9,500.00	90.00	269.90	5,640.00	-2,448.42	-4,464.14	4,468.41	0.00	0.00	0.00	
9,600.00	90.00	269.90	5,640.00	-2,448.59	-4,564.14	4,568.41	0.00	0.00	0.00	
9,700.00	90.00	269.90	5,640.00	-2,448.77	-4,664.14	4,668.41	0.00	0.00	0.00	
9,800.00	90.00	269.90	5,640.00	-2,448.94	-4,764.14	4,768.41	0.00	0.00	0.00	
9,900.00	90.00	269.90	5,640.00	-2,449.12	-4,864.14	4,868.41	0.00	0.00	0.00	
10,000.00	90.00	269.90	5,640.00	-2,449.29	-4,964.14	4,968.41	0.00	0.00	0.00	
10,100.00	90.00	269.90	5,640.00	-2,449.47	-5,064.14	5,068.41	0.00	0.00	0.00	
10,200.00	90.00	269.90	5,640.00	-2,449.64	-5,164.14	5,168.41	0.00	0.00	0.00	
10,300.00	90.00	269.90	5,640.00	-2,449.82	-5,264.14	5,268.41	0.00	0.00	0.00	
10,400.00	90.00	269.90	5,640.00	-2,449.99	-5,364.14	5,368.41	0.00	0.00	0.00	
10,500.00	90.00	269.90	5,640.00	-2,450.17	-5,464.14	5,468.41	0.00	0.00	0.00	
10,600.00	90.00	269.90	5,640.00	-2,450.34	-5,564.14	5,568.41	0.00	0.00	0.00	
10,700.00	90.00	269.90	5,640.00	-2,450.51	-5,664.14	5,668.41	0.00	0.00	0.00	
10,800.00	90.00	269.90	5,640.00	-2,450.69	-5,764.14	5,768.41	0.00	0.00	0.00	
10,900.00	90.00	269.90	5,640.00	-2,450.86	-5,864.14	5,868.41	0.00	0.00	0.00	
11,000.00	90.00	269.90	5,640.00	-2,451.04	-5,964.14	5,968.41	0.00	0.00	0.00	
11,100.00	90.00	269.90	5,640.00	-2,451.21	-6,064.14	6,068.41	0.00	0.00	0.00	
11,200.00	90.00	269.90	5,640.00	-2,451.39	-6,164.14	6,168.41	0.00	0.00	0.00	
11,300.00	90.00	269.90	5,640.00	-2,451.56	-6,264.14	6,268.41	0.00	0.00	0.00	
11,400.00	90.00	269.90	5,640.00	-2,451.74	-6,364.14	6,368.41	0.00	0.00	0.00	
11,500.00	90.00	269.90	5,640.00	-2,451.91	-6,464.14	6,468.41	0.00	0.00	0.00	
11,600.00	90.00	269.90	5,640.00	-2,452.08	-6,564.14	6,568.41	0.00	0.00	0.00	
11,700.00	90.00	269.90	5,640.00	-2,452.26	-6,664.14	6,668.41	0.00	0.00	0.00	
11,800.00	90.00	269.90	5,640.00	-2,452.43	-6,764.14	6,768.41	0.00	0.00	0.00	
11,900.00	90.00	269.90	5,640.00	-2,452.61	-6,864.14	6,868.41	0.00	0.00	0.00	
12,000.00	90.00	269.90	5,640.00	-2,452.78	-6,964.14	6,968.41	0.00	0.00	0.00	
12,100.00	90.00	269.90	5,640.00	-2,452.96	-7,064.14	7,068.41	0.00	0.00	0.00	
12,200.00	90.00	269.90	5,640.00	-2,453.13	-7,164.14	7,168.41	0.00	0.00	0.00	
12,300.00	90.00	269.90	5,640.00	-2,453.31	-7,264.14	7,268.41	0.00	0.00	0.00	
12,400.00	90.00	269.90	5,640.00	-2,453.48	-7,364.14	7,368.41	0.00	0.00	0.00	
12,500.00	90.00	269.90	5,640.00	-2,453.65	-7,464.14	7,468.41	0.00	0.00	0.00	
12,600.00	90.00	269.90	5,640.00	-2,453.83	-7,564.14	7,568.41	0.00	0.00	0.00	
12,700.00	90.00	269.90	5,640.00	-2,454.00	-7,664.14	7,668.41	0.00	0.00	0.00	
12,800.00	90.00	269.90	5,640.00	-2,454.18	-7,764.14	7,768.41	0.00	0.00	0.00	
12,900.00	90.00	269.90	5,640.00	-2,454.35	-7,864.14	7,868.41	0.00	0.00	0.00	
13,000.00	90.00	269.90	5,640.00	-2,454.53	-7,964.14	7,968.41	0.00	0.00	0.00	
13,100.00	90.00	269.90	5,640.00	-2,454.70	-8,064.14	8,068.41	0.00	0.00	0.00	
13,200.00	90.00	269.90	5,640.00	-2,454.88	-8,164.14	8,168.41	0.00	0.00	0.00	
13,284.52	90.00	269.90	5,640.00	-2,455.02	-8,248.66	8,252.93	0.00	0.00	0.00	
Lease Entry @ 13284.52ft										
13,300.00	90.00	269.90	5,640.00	-2,455.05	-8,264.14	8,268.41	0.00	0.00	0.00	
13,400.00	90.00	269.90	5,640.00	-2,455.23	-8,364.14	8,368.41	0.00	0.00	0.00	
13,500.00	90.00	269.90	5,640.00	-2,455.40	-8,464.14	8,468.41	0.00	0.00	0.00	
13,600.00	90.00	269.90	5,640.00	-2,455.57	-8,564.14	8,568.41	0.00	0.00	0.00	
13,700.00	90.00	269.90	5,640.00	-2,455.75	-8,664.14	8,668.41	0.00	0.00	0.00	
13,800.00	90.00	269.90	5,640.00	-2,455.92	-8,764.14	8,768.41	0.00	0.00	0.00	

Planning Report

Database:	EDM 5000.16 Single User Db	Local Co-ordinate Reference:	Well SPEED GOAT FED 3432-05H
Company:	VERDAD RESOURCES	TVD Reference:	RKB = 20' @ 4744.00usft (RIG)
Project:	WATTENBERG FIELD	MD Reference:	RKB = 20' @ 4744.00usft (RIG)
Site:	9N-58W-34 SPEED GOAT FED PAD	North Reference:	True
Well:	SPEED GOAT FED 3432-05H	Survey Calculation Method:	Minimum Curvature
Wellbore:	Plan C		
Design:	Permit Rev-1		

Planned Survey									
Measured Depth (usft)	Inclination (°)	Azimuth (°)	Vertical Depth (usft)	+N/-S (usft)	+E/-W (usft)	Vertical Section (usft)	Dogleg Rate (°/100usft)	Build Rate (°/100usft)	Turn Rate (°/100usft)
13,900.00	90.00	269.90	5,640.00	-2,456.10	-8,864.14	8,868.41	0.00	0.00	0.00
14,000.00	90.00	269.90	5,640.00	-2,456.27	-8,964.14	8,968.41	0.00	0.00	0.00
14,100.00	90.00	269.90	5,640.00	-2,456.45	-9,064.14	9,068.41	0.00	0.00	0.00
14,200.00	90.00	269.90	5,640.00	-2,456.62	-9,164.14	9,168.41	0.00	0.00	0.00
14,300.00	90.00	269.90	5,640.00	-2,456.80	-9,264.14	9,268.41	0.00	0.00	0.00
14,400.00	90.00	269.90	5,640.00	-2,456.97	-9,364.14	9,368.41	0.00	0.00	0.00
14,500.00	90.00	269.90	5,640.00	-2,457.14	-9,464.14	9,468.41	0.00	0.00	0.00
14,600.00	90.00	269.90	5,640.00	-2,457.32	-9,564.14	9,568.41	0.00	0.00	0.00
14,604.77	90.00	269.90	5,640.00	-2,457.33	-9,568.91	9,573.18	0.00	0.00	0.00
Lease Exit @ 14604.77ft									
14,700.00	90.00	269.90	5,640.00	-2,457.49	-9,664.14	9,668.41	0.00	0.00	0.00
14,800.00	90.00	269.90	5,640.00	-2,457.67	-9,764.14	9,768.41	0.00	0.00	0.00
14,900.00	90.00	269.90	5,640.00	-2,457.84	-9,864.14	9,868.41	0.00	0.00	0.00
15,000.00	90.00	269.90	5,640.00	-2,458.02	-9,964.14	9,968.41	0.00	0.00	0.00
15,100.00	90.00	269.90	5,640.00	-2,458.19	-10,064.14	10,068.41	0.00	0.00	0.00
15,200.00	90.00	269.90	5,640.00	-2,458.37	-10,164.14	10,168.41	0.00	0.00	0.00
15,300.00	90.00	269.90	5,640.00	-2,458.54	-10,264.14	10,268.41	0.00	0.00	0.00
15,400.00	90.00	269.90	5,640.00	-2,458.71	-10,364.14	10,368.41	0.00	0.00	0.00
15,500.00	90.00	269.90	5,640.00	-2,458.89	-10,464.14	10,468.41	0.00	0.00	0.00
15,600.00	90.00	269.90	5,640.00	-2,459.06	-10,564.14	10,568.41	0.00	0.00	0.00
15,700.00	90.00	269.90	5,640.00	-2,459.24	-10,664.14	10,668.41	0.00	0.00	0.00
15,800.00	90.00	269.90	5,640.00	-2,459.41	-10,764.14	10,768.41	0.00	0.00	0.00
15,900.00	90.00	269.90	5,640.00	-2,459.59	-10,864.13	10,868.41	0.00	0.00	0.00
16,000.00	90.00	269.90	5,640.00	-2,459.76	-10,964.13	10,968.41	0.00	0.00	0.00
16,100.00	90.00	269.90	5,640.00	-2,459.94	-11,064.13	11,068.41	0.00	0.00	0.00
16,200.00	90.00	269.90	5,640.00	-2,460.11	-11,164.13	11,168.41	0.00	0.00	0.00
16,300.00	90.00	269.90	5,640.00	-2,460.29	-11,264.13	11,268.41	0.00	0.00	0.00
16,400.00	90.00	269.90	5,640.00	-2,460.46	-11,364.13	11,368.41	0.00	0.00	0.00
16,500.00	90.00	269.90	5,640.00	-2,460.63	-11,464.13	11,468.41	0.00	0.00	0.00
16,600.00	90.00	269.90	5,640.00	-2,460.81	-11,564.13	11,568.41	0.00	0.00	0.00
16,700.00	90.00	269.90	5,640.00	-2,460.98	-11,664.13	11,668.41	0.00	0.00	0.00
16,800.00	90.00	269.90	5,640.00	-2,461.16	-11,764.13	11,768.41	0.00	0.00	0.00
16,900.00	90.00	269.90	5,640.00	-2,461.33	-11,864.13	11,868.41	0.00	0.00	0.00
17,000.00	90.00	269.90	5,640.00	-2,461.51	-11,964.13	11,968.41	0.00	0.00	0.00
17,100.00	90.00	269.90	5,640.00	-2,461.68	-12,064.13	12,068.41	0.00	0.00	0.00
17,200.00	90.00	269.90	5,640.00	-2,461.86	-12,164.13	12,168.41	0.00	0.00	0.00
17,300.00	90.00	269.90	5,640.00	-2,462.03	-12,264.13	12,268.41	0.00	0.00	0.00
17,400.00	90.00	269.90	5,640.00	-2,462.20	-12,364.13	12,368.41	0.00	0.00	0.00
17,500.00	90.00	269.90	5,640.00	-2,462.38	-12,464.13	12,468.41	0.00	0.00	0.00
17,600.00	90.00	269.90	5,640.00	-2,462.55	-12,564.13	12,568.41	0.00	0.00	0.00
17,700.00	90.00	269.90	5,640.00	-2,462.73	-12,664.13	12,668.41	0.00	0.00	0.00
17,800.00	90.00	269.90	5,640.00	-2,462.90	-12,764.13	12,768.41	0.00	0.00	0.00
17,900.00	90.00	269.90	5,640.00	-2,463.08	-12,864.13	12,868.41	0.00	0.00	0.00
18,000.00	90.00	269.90	5,640.00	-2,463.25	-12,964.13	12,968.41	0.00	0.00	0.00
18,100.00	90.00	269.90	5,640.00	-2,463.43	-13,064.13	13,068.41	0.00	0.00	0.00
18,200.00	90.00	269.90	5,640.00	-2,463.60	-13,164.13	13,168.41	0.00	0.00	0.00
18,300.00	90.00	269.90	5,640.00	-2,463.77	-13,264.13	13,268.41	0.00	0.00	0.00
18,400.00	90.00	269.90	5,640.00	-2,463.95	-13,364.13	13,368.41	0.00	0.00	0.00
18,500.00	90.00	269.90	5,640.00	-2,464.12	-13,464.13	13,468.41	0.00	0.00	0.00
18,600.00	90.00	269.90	5,640.00	-2,464.30	-13,564.13	13,568.41	0.00	0.00	0.00
18,700.00	90.00	269.90	5,640.00	-2,464.47	-13,664.13	13,668.41	0.00	0.00	0.00
18,800.00	90.00	269.90	5,640.00	-2,464.65	-13,764.13	13,768.41	0.00	0.00	0.00
18,900.00	90.00	269.90	5,640.00	-2,464.82	-13,864.13	13,868.41	0.00	0.00	0.00

Planning Report

Database:	EDM 5000.16 Single User Db	Local Co-ordinate Reference:	Well SPEED GOAT FED 3432-05H
Company:	VERDAD RESOURCES	TVD Reference:	RKB = 20' @ 4744.00usft (RIG)
Project:	WATTENBERG FIELD	MD Reference:	RKB = 20' @ 4744.00usft (RIG)
Site:	9N-58W-34 SPEED GOAT FED PAD	North Reference:	True
Well:	SPEED GOAT FED 3432-05H	Survey Calculation Method:	Minimum Curvature
Wellbore:	Plan C		
Design:	Permit Rev-1		

Planned Survey									
Measured Depth (usft)	Inclination (°)	Azimuth (°)	Vertical Depth (usft)	+N/-S (usft)	+E/-W (usft)	Vertical Section (usft)	Dogleg Rate (°/100usft)	Build Rate (°/100usft)	Turn Rate (°/100usft)
19,000.00	90.00	269.90	5,640.00	-2,465.00	-13,964.13	13,968.41	0.00	0.00	0.00
19,100.00	90.00	269.90	5,640.00	-2,465.17	-14,064.13	14,068.41	0.00	0.00	0.00
19,200.00	90.00	269.90	5,640.00	-2,465.35	-14,164.13	14,168.41	0.00	0.00	0.00
19,300.00	90.00	269.90	5,640.00	-2,465.52	-14,264.13	14,268.41	0.00	0.00	0.00
19,400.00	90.00	269.90	5,640.00	-2,465.69	-14,364.13	14,368.41	0.00	0.00	0.00
19,500.00	90.00	269.90	5,640.00	-2,465.87	-14,464.13	14,468.41	0.00	0.00	0.00
19,570.29	90.00	269.90	5,640.00	-2,465.99	-14,534.42	14,538.70	0.00	0.00	0.00
BPZ @ 19570.29ft									
19,600.00	90.00	269.90	5,640.00	-2,466.04	-14,564.13	14,568.41	0.00	0.00	0.00
19,660.12	90.00	269.90	5,640.00	-2,466.15	-14,624.25	14,628.53	0.00	0.00	0.00
TD Well @ 19660.12ft									

Casing Points				
Measured Depth (usft)	Vertical Depth (usft)	Name	Casing Diameter (")	Hole Diameter (")
1,492.30	1,474.00	9 5/8"	9-5/8	13-1/2

Plan Annotations				
Measured Depth (usft)	Vertical Depth (usft)	Local Coordinates		Comment
		+N/-S (usft)	+E/-W (usft)	
524.50	524.50	0.00	0.00	Begin Nudge @ 524.50ft
2,139.00	2,054.88	-399.53	-191.42	Hold Tangent @ 2139.00ft
5,814.29	5,161.81	-2,170.15	-1,039.76	KOP @ 5814.29ft :: DLS = 8°/100'
6,771.85	5,640.00	-2,443.66	-1,736.00	End Build @ 6771.85ft
13,284.52	5,640.00	-2,455.02	-8,248.66	Lease Entry @ 13284.52ft
14,604.77	5,640.00	-2,457.33	-9,568.91	Lease Exit @ 14604.77ft
19,570.29	5,640.00	-2,465.99	-14,534.42	BPZ @ 19570.29ft
19,660.12	5,640.00	-2,466.15	-14,624.25	TD Well @ 19660.12ft