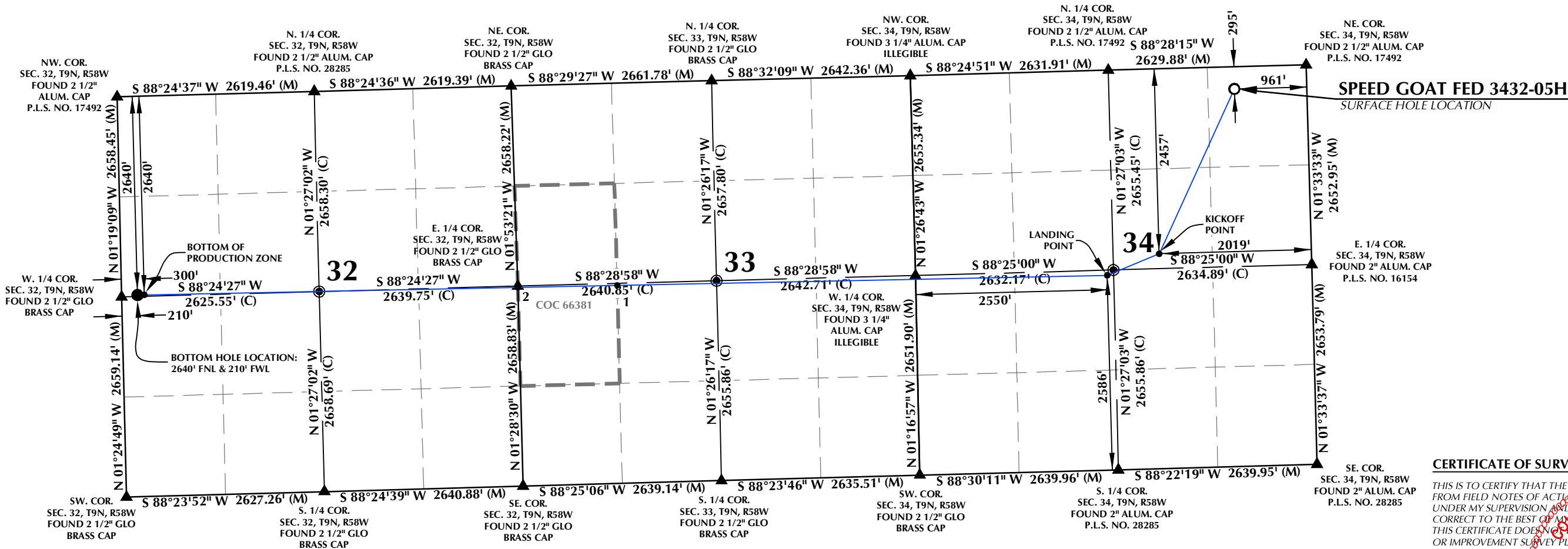


T9N, R58W



**SURFACE HOLE LOCATION: NAD 83**  
GROUND ELEVATION= 4723.4'  
LATITUDE= 40.714170°  
LONGITUDE= -103.843791°  
LATITUDE= 40°42'51.011"  
LONGITUDE= -103°50'37.648"

**KICKOFF POINT: NAD 83**  
LATITUDE= 40.708213°  
LONGITUDE= -103.847541°  
LATITUDE= 40°42'29.568"  
LONGITUDE= -103°50'51.149"

**LANDING POINT: NAD 83**  
LATITUDE= 40.707462°  
LONGITUDE= -103.850053°  
LATITUDE= 40°42'26.865"  
LONGITUDE= -103°51'00.189"

**BOTTOM OF PRODUCTION ZONE: NAD 83**  
LATITUDE= 40.707392°  
LONGITUDE= -103.896215°  
LATITUDE= 40°42'26.610"  
LONGITUDE= -103°53'46.372"

**BOTTOM HOLE LOCATION: NAD 83**  
LATITUDE= 40.707389°  
LONGITUDE= -103.896539°  
LATITUDE= 40°42'26.602"  
LONGITUDE= -103°53'47.541"

**FEDERAL LEASE CROSSINGS**

- 1) LAT: 40.707429°  
LON: -103.873543°  
LAT: 40°42'26.744"  
LON: -103°52'24.753"  
2631' FSL, 1320' FWL
- 2) LAT: 40.707421°  
LON: -103.878305°  
LAT: 40°42'26.717"  
LON: -103°52'41.899"  
2640' FSL, 0' FEL (SEC. 32)

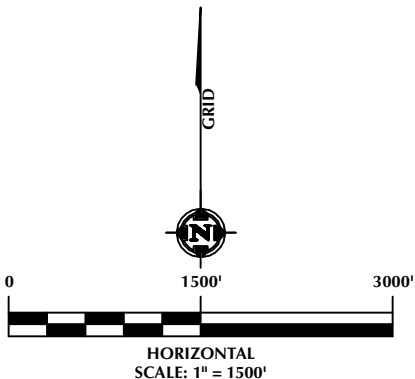
**CERTIFICATE OF SURVEYOR:**

THIS IS TO CERTIFY THAT THE ABOVE MAP WAS PREPARED FROM FIELD NOTES OF ACTUAL SURVEYS MADE BY ME OR UNDER MY SUPERVISION AND THAT THE SAME ARE TRUE AND CORRECT TO THE BEST OF MY KNOWLEDGE AND BELIEF. THIS CERTIFICATE DOES NOT REPRESENT A LAND SURVEY THAT OR IMPROVEMENT SURVEY PLAT AS DEFINED BY C.R.S. 38-51-102 AND CANNOT BE RELIED UPON TO DETERMINE OWNERSHIP.

RANDALL K. FRENCH  
PROFESSIONAL LAND SURVEYOR  
COLORADO REGISTRATION NUMBER 38512

NOTICE:  
ACCORDING TO COLORADO STATE LAW YOU MUST COMMENCE A LITIGIAL ACTION BASED UPON ANY DEFECT IN THIS SURVEY WITHIN THREE YEARS OF FIRST DISCOVERY OF SUCH DEFECT. IN NO EVENT MAY ANY ACTION BASED UPON ANY DEFECT IN THIS SURVEY BE COMMENCED MORE THAN TEN YEARS FROM THE DATE ON THE CERTIFICATION SHOWN HEREON.

- NOTES:**
1. ▲ INDICATES SECTION CORNER.
  2. ● INDICATES CALCULATED CORNER.
  3. ELEVATION BASED ON NAVD88 (GEOID18).
  4. BASIS OF BEARINGS DERIVED FROM COLORADO COORDINATE SYSTEM OF 1983, NORTH ZONE.
  5. ALL MEASURED DISTANCES ARE GRID.
  6. COMBINED SCALE FACTOR: .99976710 CALCULATED FROM THE NE. CORNER OF SECTION 34, T9N, R58W.
  7. OPERATOR: RYAN GROVES / PDOP = 1.1
  8. WELL FOOTAGES ARE MEASURED AT RIGHT ANGLES TO THE SECTION LINES.



**LOVELAND OFFICE**  
6706 North Franklin Avenue  
Loveland, Colorado 80538  
Phone 970-776-4331

**SHERIDAN OFFICE**  
1095 Saberton Avenue  
Sheridan, Wyoming 82801  
Phone 307-674-0609



1125 17th Street, Suite 550  
Denver, Colorado 80202

**WELL PAD - SPEED GOAT FED 3432-3435**

**SPEED GOAT FED 3432-05H**  
**WELL LOCATION CERTIFICATE**  
295' FNL & 961' FEL (NENE) (SURFACE HOLE LOCATION)  
2457' FNL & 2019' FEL (SWNE) (KICKOFF POINT)  
2586' FSL & 2550' FWL (NESW) (LANDING POINT)  
LOCATED IN SECTION 34  
2640' FNL & 300' FWL (SWNW) (BOTTOM OF PRODUCTION ZONE)  
2640' FNL & 210' FWL (SWNW) (BOTTOM HOLE LOCATION)  
LOCATED IN SECTION 32  
T9N, R58W, 6TH P.M.  
WELD COUNTY, COLORADO

DRAFTED BY:	SJM	CHECKED BY:	RKF
DATE DRAFTED:	6/13/23	DATE SURVEYED:	5/22/23
REVISED:	1/26/24	FILE NAME:	22-200