

VERDAD RESOURCES

WATTENBERG FIELD

9N-58W-34 SPEED GOAT FED PAD

SPEED GOAT FED 3432-04H

Plan C

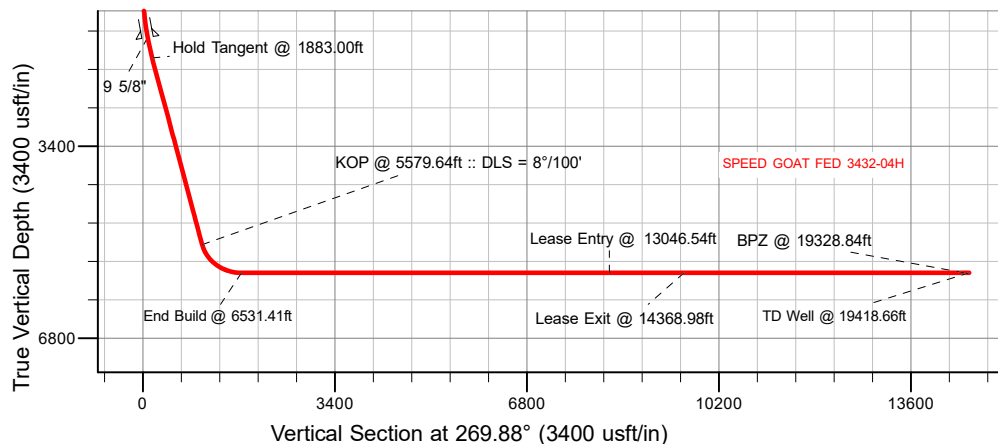
Plan: Permit Rev-1

Standard Planning Report

25 January, 2024

VERDAD RESOURCES

CASING DETAILS			
TVD	MD	Name	Size
1474.00	1490.85	9 5/8"	9-5/8



SECTION DETAILS										
Sec	MD	Inc	Azi	TVD	+N/-S	+E/-W	Dleg	TFace	VSec	Target
1	0.00		0.00	0.00	0.00	0.00	0.00	0.00	0.00	
2	549.50	0.00	0.00	549.50	0.00	0.00	0.00	0.00	0.00	
3	1883.00	26.67	212.3	1835.36	-258.11	-162.10	2.00	212.13	161.64	
4	5579.64	26.67	212.13	5138.71	-1663.23	-1044.56	0.00	0.00	1048.04	
5	6531.41	90.00	269.88	5640.00	-1877.66	-1739.45	8.00	60.58	1743.38	
6	19418.66	90.00	269.88	5640.00	-1905.08	-14626.68	0.00	0.00	14630.64	SPEED GOAT FED 3432-04H_BHLL

WELLBORE TARGET DETAILS (LAT/LONG)						
Name	MD	TVD	Northing	Easting	Latitude	Longitude
SPEED GOAT FED 3432-04H_SHL	0.00	0.00	1507319.65	3459106.64	40.714214	-103.843791
SPEED GOAT FED 3432-04H_KOP	5579.64	5138.70	1505637.20	3458093.32	40.709649	-103.847559
SPEED GOAT FED 3432-04H_LP	6531.41	5640.00	1505409.83	3457402.56	40.709060	-103.850065
SPEED GOAT FED 3432-04H_Lease Entry	13046.54	5640.00	1505274.52	3450888.83	40.709019	-103.873565
SPEED GOAT FED 3432-04H_Lease Exit	14368.98	5640.00	1505247.03	3449566.68	40.709010	-103.878335
SPEED GOAT FED 3432-04H_BPZ	19328.84	5640.00	1505144.08	3444607.89	40.708975	-103.896225
SPEED GOAT FED 3432-04H_BHL	19418.66	5640.00	1505141.73	3445819.09	40.708973	-103.896549

SHL
279' FNL
961' FEL

KOP
1934' FNL
2020' FEL

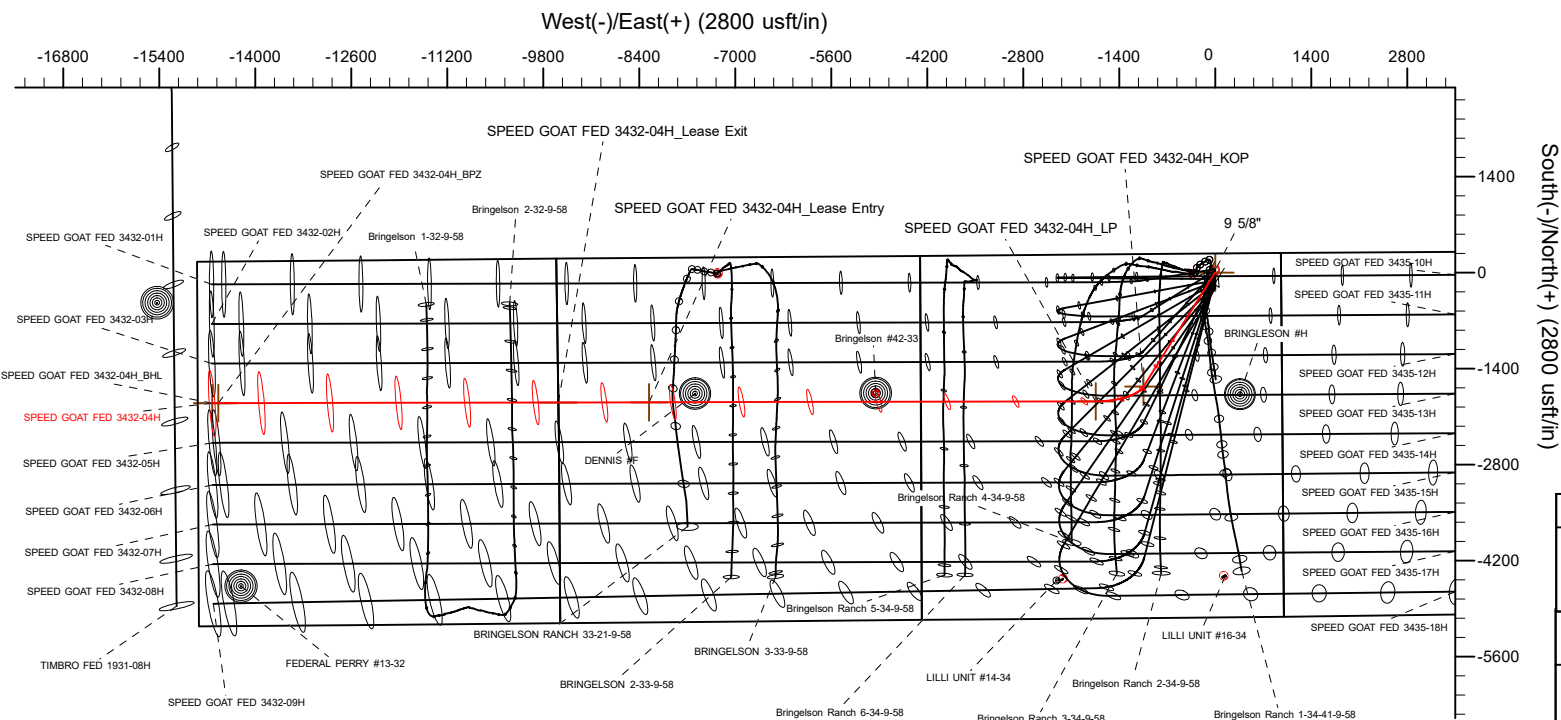
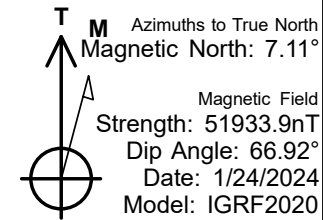
LP
2143' FNL
2550' FWL

LEASE ENTRY
2105' FNL
1323' FWL

LEASE EXIT
2098' FNL
0' FEL

BPZ
2063' FNL
300' FWL

BHL
2063' FNL
210' FWL



WELL DETAILS: SPEED GOAT FED 3432-04H
<p>GL = 4724'</p> <p>RKB = 20' @ 4744.00usft (RIG)</p>
Plan: Permit Rev-1 (SPEED GOAT FED 3432-04H/Plan C)
<p>Date: 1/25/2024</p>

Planning Report

Database:	EDM 5000.16 Single User Db	Local Co-ordinate Reference:	Well SPEED GOAT FED 3432-04H
Company:	VERDAD RESOURCES	TVD Reference:	RKB = 20' @ 4744.00usft (RIG)
Project:	WATTENBERG FIELD	MD Reference:	RKB = 20' @ 4744.00usft (RIG)
Site:	9N-58W-34 SPEED GOAT FED PAD	North Reference:	True
Well:	SPEED GOAT FED 3432-04H	Survey Calculation Method:	Minimum Curvature
Wellbore:	Plan C		
Design:	Permit Rev-1		

Project	WATTENBERG FIELD		
Map System:	US State Plane 1983	System Datum:	Mean Sea Level
Geo Datum:	North American Datum 1983		
Map Zone:	Colorado Northern Zone		

Site		9N-58W-34 SPEED GOAT FED PAD			
Site Position:		Northing:	1,507,367.36 usft	Latitude:	40.714345
From:	Lat/Long	Easting:	3,459,105.19 usft	Longitude:	-103.843793
Position Uncertainty:		0.00 usft	Slot Radius:	13-3/16 "	

Well	SPEED GOAT FED 3432-04H					
Well Position	+N/-S	0.00 usft	Northing:	1,507,319.65 usft	Latitude:	40.714214
	+E/-W	0.00 usft	Easting:	3,459,106.64 usft	Longitude:	-103.843791
Position Uncertainty		3.28 usft	Wellhead Elevation:	usft	Ground Level:	4,724.00 usft
Grid Convergence:		1.07 °				

Wellbore	Plan C				
Magnetics	Model Name	Sample Date	Declination (°)	Dip Angle (°)	Field Strength (nT)
	IGRF202013	1/24/2024	7.11	66.92	51,933.92297946

Design	Permit Rev-1				
Audit Notes:					
Version:		Phase:	PLAN	Tie On Depth:	0.00
Vertical Section:		Depth From (TVD) (usft)	+N/-S (usft)	+E/-W (usft)	Direction (°)
		0.00	0.00	0.00	269.88

Plan Survey Tool Program		Date	1/25/2024		
Depth From (usft)	Depth To (usft)	Survey (Wellbore)	Tool Name	Remarks	
1	0.00	1,474.00	Permit Rev-1 (Plan C)	ISCWSA MWD	Fixed:v2:standard declination
2	1,474.00	19,418.66	Permit Rev-1 (Plan C)	ISCWSA MWD	Fixed:v2:standard declination

Planning Report

Database:	EDM 5000.16 Single User Db	Local Co-ordinate Reference:	Well SPEED GOAT FED 3432-04H
Company:	VERDAD RESOURCES	TVD Reference:	RKB = 20' @ 4744.00usft (RIG)
Project:	WATTENBERG FIELD	MD Reference:	RKB = 20' @ 4744.00usft (RIG)
Site:	9N-58W-34 SPEED GOAT FED PAD	North Reference:	True
Well:	SPEED GOAT FED 3432-04H	Survey Calculation Method:	Minimum Curvature
Wellbore:	Plan C		
Design:	Permit Rev-1		

Plan Sections										
Measured Depth (usft)	Inclination (°)	Azimuth (°)	Vertical Depth (usft)	+N/-S (usft)	+E/-W (usft)	Dogleg Rate (°/100usft)	Build Rate (°/100usft)	Turn Rate (°/100usft)	TFO (°)	Target
0.00	0.00	0.00	0.00	0.00	0.00	0.00	0.00	0.00	0.00	
549.50	0.00	0.00	549.50	0.00	0.00	0.00	0.00	0.00	0.00	
1,883.00	26.67	212.13	1,835.36	-258.11	-162.10	2.00	2.00	0.00	212.13	
5,579.64	26.67	212.13	5,138.71	-1,663.23	-1,044.56	0.00	0.00	0.00	0.00	
6,531.41	90.00	269.88	5,640.00	-1,877.66	-1,739.45	8.00	6.65	6.07	60.58	
19,418.66	90.00	269.88	5,640.00	-1,905.08	-14,626.68	0.00	0.00	0.00	0.00	SPEED GOAT FED 3

Planning Report

Database:	EDM 5000.16 Single User Db	Local Co-ordinate Reference:	Well SPEED GOAT FED 3432-04H
Company:	VERDAD RESOURCES	TVD Reference:	RKB = 20' @ 4744.00usft (RIG)
Project:	WATTENBERG FIELD	MD Reference:	RKB = 20' @ 4744.00usft (RIG)
Site:	9N-58W-34 SPEED GOAT FED PAD	North Reference:	True
Well:	SPEED GOAT FED 3432-04H	Survey Calculation Method:	Minimum Curvature
Wellbore:	Plan C		
Design:	Permit Rev-1		

Planned Survey									
Measured Depth (usft)	Inclination (°)	Azimuth (°)	Vertical Depth (usft)	+N/-S (usft)	+E/-W (usft)	Vertical Section (usft)	Dogleg Rate (°/100usft)	Build Rate (°/100usft)	Turn Rate (°/100usft)
0.00	0.00	0.00	0.00	0.00	0.00	0.00	0.00	0.00	0.00
100.00	0.00	0.00	100.00	0.00	0.00	0.00	0.00	0.00	0.00
200.00	0.00	0.00	200.00	0.00	0.00	0.00	0.00	0.00	0.00
300.00	0.00	0.00	300.00	0.00	0.00	0.00	0.00	0.00	0.00
400.00	0.00	0.00	400.00	0.00	0.00	0.00	0.00	0.00	0.00
500.00	0.00	0.00	500.00	0.00	0.00	0.00	0.00	0.00	0.00
549.50	0.00	0.00	549.50	0.00	0.00	0.00	0.00	0.00	0.00
Begin Nudge @ 549.50ft									
600.00	1.01	212.13	600.00	-0.38	-0.24	0.24	2.00	2.00	0.00
700.00	3.01	212.13	699.93	-3.35	-2.10	2.11	2.00	2.00	0.00
800.00	5.01	212.13	799.68	-9.27	-5.82	5.84	2.00	2.00	0.00
900.00	7.01	212.13	899.13	-18.13	-11.39	11.43	2.00	2.00	0.00
1,000.00	9.01	212.13	998.15	-29.93	-18.80	18.86	2.00	2.00	0.00
1,100.00	11.01	212.13	1,096.62	-44.65	-28.04	28.14	2.00	2.00	0.00
1,200.00	13.01	212.13	1,194.42	-62.27	-39.11	39.24	2.00	2.00	0.00
1,300.00	15.01	212.13	1,291.44	-82.77	-51.98	52.16	2.00	2.00	0.00
1,400.00	17.01	212.13	1,387.56	-106.13	-66.65	66.87	2.00	2.00	0.00
1,490.85	18.83	212.13	1,474.00	-129.80	-81.52	81.79	2.00	2.00	0.00
9 5/8"									
1,500.00	19.01	212.13	1,482.66	-132.31	-83.10	83.37	2.00	2.00	0.00
1,600.00	21.01	212.13	1,576.62	-161.29	-101.29	101.63	2.00	2.00	0.00
1,700.00	23.01	212.13	1,669.32	-193.02	-121.22	121.63	2.00	2.00	0.00
1,800.00	25.01	212.13	1,760.67	-227.48	-142.86	143.34	2.00	2.00	0.00
1,883.00	26.67	212.13	1,835.36	-258.11	-162.10	162.64	2.00	2.00	0.00
Hold Tangent @ 1883.00ft									
1,900.00	26.67	212.13	1,850.56	-264.58	-166.16	166.71	0.00	0.00	0.00
2,000.00	26.67	212.13	1,939.92	-302.59	-190.03	190.67	0.00	0.00	0.00
2,100.00	26.67	212.13	2,029.28	-340.60	-213.90	214.62	0.00	0.00	0.00
2,200.00	26.67	212.13	2,118.64	-378.61	-237.78	238.57	0.00	0.00	0.00
2,300.00	26.67	212.13	2,208.00	-416.62	-261.65	262.52	0.00	0.00	0.00
2,400.00	26.67	212.13	2,297.36	-454.63	-285.52	286.47	0.00	0.00	0.00
2,500.00	26.67	212.13	2,386.72	-492.64	-309.39	310.42	0.00	0.00	0.00
2,600.00	26.67	212.13	2,476.08	-530.65	-333.26	334.37	0.00	0.00	0.00
2,700.00	26.67	212.13	2,565.44	-568.66	-357.14	358.33	0.00	0.00	0.00
2,800.00	26.67	212.13	2,654.80	-606.67	-381.01	382.28	0.00	0.00	0.00
2,900.00	26.67	212.13	2,744.16	-644.68	-404.88	406.23	0.00	0.00	0.00
3,000.00	26.67	212.13	2,833.52	-682.69	-428.75	430.18	0.00	0.00	0.00
3,100.00	26.67	212.13	2,922.88	-720.70	-452.62	454.13	0.00	0.00	0.00
3,200.00	26.67	212.13	3,012.24	-758.71	-476.49	478.08	0.00	0.00	0.00
3,300.00	26.67	212.13	3,101.60	-796.72	-500.37	502.03	0.00	0.00	0.00
3,400.00	26.67	212.13	3,190.97	-834.74	-524.24	525.98	0.00	0.00	0.00
3,500.00	26.67	212.13	3,280.33	-872.75	-548.11	549.94	0.00	0.00	0.00
3,600.00	26.67	212.13	3,369.69	-910.76	-571.98	573.89	0.00	0.00	0.00
3,700.00	26.67	212.13	3,459.05	-948.77	-595.85	597.84	0.00	0.00	0.00
3,800.00	26.67	212.13	3,548.41	-986.78	-619.72	621.79	0.00	0.00	0.00
3,900.00	26.67	212.13	3,637.77	-1,024.79	-643.60	645.74	0.00	0.00	0.00
4,000.00	26.67	212.13	3,727.13	-1,062.80	-667.47	669.69	0.00	0.00	0.00
4,100.00	26.67	212.13	3,816.49	-1,100.81	-691.34	693.64	0.00	0.00	0.00
4,200.00	26.67	212.13	3,905.85	-1,138.82	-715.21	717.60	0.00	0.00	0.00
4,300.00	26.67	212.13	3,995.21	-1,176.83	-739.08	741.55	0.00	0.00	0.00
4,400.00	26.67	212.13	4,084.57	-1,214.84	-762.96	765.50	0.00	0.00	0.00
4,500.00	26.67	212.13	4,173.93	-1,252.85	-786.83	789.45	0.00	0.00	0.00
4,600.00	26.67	212.13	4,263.29	-1,290.86	-810.70	813.40	0.00	0.00	0.00

Planning Report

Database:	EDM 5000.16 Single User Db	Local Co-ordinate Reference:	Well SPEED GOAT FED 3432-04H
Company:	VERDAD RESOURCES	TVD Reference:	RKB = 20' @ 4744.00usft (RIG)
Project:	WATTENBERG FIELD	MD Reference:	RKB = 20' @ 4744.00usft (RIG)
Site:	9N-58W-34 SPEED GOAT FED PAD	North Reference:	True
Well:	SPEED GOAT FED 3432-04H	Survey Calculation Method:	Minimum Curvature
Wellbore:	Plan C		
Design:	Permit Rev-1		

Planned Survey										
Measured Depth (usft)	Inclination (°)	Azimuth (°)	Vertical Depth (usft)	+N/-S (usft)	+E/-W (usft)	Vertical Section (usft)	Dogleg Rate (°/100usft)	Build Rate (°/100usft)	Turn Rate (°/100usft)	
4,700.00	26.67	212.13	4,352.65	-1,328.87	-834.57	837.35	0.00	0.00	0.00	
4,800.00	26.67	212.13	4,442.01	-1,366.88	-858.44	861.30	0.00	0.00	0.00	
4,900.00	26.67	212.13	4,531.37	-1,404.90	-882.31	885.26	0.00	0.00	0.00	
5,000.00	26.67	212.13	4,620.74	-1,442.91	-906.19	909.21	0.00	0.00	0.00	
5,100.00	26.67	212.13	4,710.10	-1,480.92	-930.06	933.16	0.00	0.00	0.00	
5,200.00	26.67	212.13	4,799.46	-1,518.93	-953.93	957.11	0.00	0.00	0.00	
5,300.00	26.67	212.13	4,888.82	-1,556.94	-977.80	981.06	0.00	0.00	0.00	
5,400.00	26.67	212.13	4,978.18	-1,594.95	-1,001.67	1,005.01	0.00	0.00	0.00	
5,500.00	26.67	212.13	5,067.54	-1,632.96	-1,025.55	1,028.96	0.00	0.00	0.00	
5,579.64	26.67	212.13	5,138.71	-1,663.23	-1,044.56	1,048.04	0.00	0.00	0.00	
KOP @ 5579.64ft :: DLS = 8°/100'										
5,600.00	27.50	215.20	5,156.83	-1,670.94	-1,049.70	1,053.19	8.00	4.10	15.09	
5,650.00	29.81	222.03	5,200.72	-1,689.62	-1,064.68	1,068.22	8.00	4.61	13.65	
5,700.00	32.42	227.90	5,243.53	-1,707.84	-1,082.95	1,086.53	8.00	5.22	11.75	
5,750.00	35.26	232.95	5,285.06	-1,725.53	-1,104.43	1,108.04	8.00	5.69	10.11	
5,800.00	38.29	237.33	5,325.11	-1,742.60	-1,129.00	1,132.64	8.00	6.05	8.74	
5,850.00	41.46	241.14	5,363.49	-1,758.96	-1,156.54	1,160.22	8.00	6.34	7.62	
5,900.00	44.74	244.49	5,400.00	-1,774.53	-1,186.93	1,190.65	8.00	6.56	6.71	
5,950.00	48.10	247.48	5,434.46	-1,789.24	-1,220.02	1,223.76	8.00	6.73	5.97	
6,000.00	51.54	250.16	5,466.72	-1,803.02	-1,255.64	1,259.41	8.00	6.87	5.36	
6,050.00	55.03	252.60	5,496.61	-1,815.80	-1,293.61	1,297.42	8.00	6.98	4.87	
6,100.00	58.57	254.83	5,523.98	-1,827.51	-1,333.77	1,337.59	8.00	7.07	4.47	
6,150.00	62.14	256.90	5,548.71	-1,838.11	-1,375.90	1,379.75	8.00	7.14	4.14	
6,200.00	65.74	258.84	5,570.68	-1,847.53	-1,419.81	1,423.67	8.00	7.20	3.88	
6,250.00	69.37	260.67	5,589.77	-1,855.73	-1,465.27	1,469.16	8.00	7.25	3.66	
6,300.00	73.01	262.42	5,605.89	-1,862.68	-1,512.08	1,515.98	8.00	7.29	3.49	
6,350.00	76.66	264.10	5,618.97	-1,868.34	-1,560.00	1,563.91	8.00	7.31	3.36	
6,400.00	80.33	265.73	5,628.94	-1,872.68	-1,608.79	1,612.71	8.00	7.34	3.26	
6,450.00	84.01	267.32	5,635.75	-1,875.68	-1,658.22	1,662.15	8.00	7.35	3.19	
6,500.00	87.69	268.90	5,639.37	-1,877.32	-1,708.05	1,711.98	8.00	7.36	3.15	
6,531.41	90.00	269.88	5,640.00	-1,877.66	-1,739.45	1,743.38	8.00	7.36	3.13	
End Build @ 6531.41ft										
6,600.00	90.00	269.88	5,640.00	-1,877.80	-1,808.04	1,811.97	0.00	0.00	0.00	
6,700.00	90.00	269.88	5,640.00	-1,878.02	-1,908.04	1,911.97	0.00	0.00	0.00	
6,800.00	90.00	269.88	5,640.00	-1,878.23	-2,008.04	2,011.97	0.00	0.00	0.00	
6,900.00	90.00	269.88	5,640.00	-1,878.44	-2,108.04	2,111.97	0.00	0.00	0.00	
7,000.00	90.00	269.88	5,640.00	-1,878.65	-2,208.04	2,211.97	0.00	0.00	0.00	
7,100.00	90.00	269.88	5,640.00	-1,878.87	-2,308.04	2,311.97	0.00	0.00	0.00	
7,200.00	90.00	269.88	5,640.00	-1,879.08	-2,408.04	2,411.97	0.00	0.00	0.00	
7,300.00	90.00	269.88	5,640.00	-1,879.29	-2,508.04	2,511.97	0.00	0.00	0.00	
7,400.00	90.00	269.88	5,640.00	-1,879.51	-2,608.04	2,611.97	0.00	0.00	0.00	
7,500.00	90.00	269.88	5,640.00	-1,879.72	-2,708.04	2,711.97	0.00	0.00	0.00	
7,600.00	90.00	269.88	5,640.00	-1,879.93	-2,808.04	2,811.97	0.00	0.00	0.00	
7,700.00	90.00	269.88	5,640.00	-1,880.14	-2,908.04	2,911.97	0.00	0.00	0.00	
7,800.00	90.00	269.88	5,640.00	-1,880.36	-3,008.04	3,011.97	0.00	0.00	0.00	
7,900.00	90.00	269.88	5,640.00	-1,880.57	-3,108.04	3,111.97	0.00	0.00	0.00	
8,000.00	90.00	269.88	5,640.00	-1,880.78	-3,208.04	3,211.97	0.00	0.00	0.00	
8,100.00	90.00	269.88	5,640.00	-1,881.00	-3,308.04	3,311.97	0.00	0.00	0.00	
8,200.00	90.00	269.88	5,640.00	-1,881.21	-3,408.04	3,411.97	0.00	0.00	0.00	
8,300.00	90.00	269.88	5,640.00	-1,881.42	-3,508.04	3,511.97	0.00	0.00	0.00	
8,400.00	90.00	269.88	5,640.00	-1,881.63	-3,608.04	3,611.97	0.00	0.00	0.00	
8,500.00	90.00	269.88	5,640.00	-1,881.85	-3,708.04	3,711.97	0.00	0.00	0.00	
8,600.00	90.00	269.88	5,640.00	-1,882.06	-3,808.04	3,811.97	0.00	0.00	0.00	
8,700.00	90.00	269.88	5,640.00	-1,882.27	-3,908.04	3,911.97	0.00	0.00	0.00	

Planning Report

Database:	EDM 5000.16 Single User Db	Local Co-ordinate Reference:	Well SPEED GOAT FED 3432-04H
Company:	VERDAD RESOURCES	TVD Reference:	RKB = 20' @ 4744.00usft (RIG)
Project:	WATTENBERG FIELD	MD Reference:	RKB = 20' @ 4744.00usft (RIG)
Site:	9N-58W-34 SPEED GOAT FED PAD	North Reference:	True
Well:	SPEED GOAT FED 3432-04H	Survey Calculation Method:	Minimum Curvature
Wellbore:	Plan C		
Design:	Permit Rev-1		

Planned Survey										
Measured Depth (usft)	Inclination (°)	Azimuth (°)	Vertical Depth (usft)	+N/-S (usft)	+E/-W (usft)	Vertical Section (usft)	Dogleg Rate (°/100usft)	Build Rate (°/100usft)	Turn Rate (°/100usft)	
8,800.00	90.00	269.88	5,640.00	-1,882.49	-4,008.04	4,011.97	0.00	0.00	0.00	
8,900.00	90.00	269.88	5,640.00	-1,882.70	-4,108.04	4,111.97	0.00	0.00	0.00	
9,000.00	90.00	269.88	5,640.00	-1,882.91	-4,208.04	4,211.97	0.00	0.00	0.00	
9,100.00	90.00	269.88	5,640.00	-1,883.12	-4,308.04	4,311.97	0.00	0.00	0.00	
9,200.00	90.00	269.88	5,640.00	-1,883.34	-4,408.04	4,411.97	0.00	0.00	0.00	
9,300.00	90.00	269.88	5,640.00	-1,883.55	-4,508.04	4,511.97	0.00	0.00	0.00	
9,400.00	90.00	269.88	5,640.00	-1,883.76	-4,608.04	4,611.97	0.00	0.00	0.00	
9,500.00	90.00	269.88	5,640.00	-1,883.97	-4,708.04	4,711.97	0.00	0.00	0.00	
9,600.00	90.00	269.88	5,640.00	-1,884.19	-4,808.04	4,811.97	0.00	0.00	0.00	
9,700.00	90.00	269.88	5,640.00	-1,884.40	-4,908.04	4,911.97	0.00	0.00	0.00	
9,800.00	90.00	269.88	5,640.00	-1,884.61	-5,008.04	5,011.97	0.00	0.00	0.00	
9,900.00	90.00	269.88	5,640.00	-1,884.83	-5,108.04	5,111.97	0.00	0.00	0.00	
10,000.00	90.00	269.88	5,640.00	-1,885.04	-5,208.04	5,211.97	0.00	0.00	0.00	
10,100.00	90.00	269.88	5,640.00	-1,885.25	-5,308.04	5,311.97	0.00	0.00	0.00	
10,200.00	90.00	269.88	5,640.00	-1,885.46	-5,408.03	5,411.97	0.00	0.00	0.00	
10,300.00	90.00	269.88	5,640.00	-1,885.68	-5,508.03	5,511.97	0.00	0.00	0.00	
10,400.00	90.00	269.88	5,640.00	-1,885.89	-5,608.03	5,611.97	0.00	0.00	0.00	
10,500.00	90.00	269.88	5,640.00	-1,886.10	-5,708.03	5,711.97	0.00	0.00	0.00	
10,600.00	90.00	269.88	5,640.00	-1,886.32	-5,808.03	5,811.97	0.00	0.00	0.00	
10,700.00	90.00	269.88	5,640.00	-1,886.53	-5,908.03	5,911.97	0.00	0.00	0.00	
10,800.00	90.00	269.88	5,640.00	-1,886.74	-6,008.03	6,011.97	0.00	0.00	0.00	
10,900.00	90.00	269.88	5,640.00	-1,886.95	-6,108.03	6,111.97	0.00	0.00	0.00	
11,000.00	90.00	269.88	5,640.00	-1,887.17	-6,208.03	6,211.97	0.00	0.00	0.00	
11,100.00	90.00	269.88	5,640.00	-1,887.38	-6,308.03	6,311.97	0.00	0.00	0.00	
11,200.00	90.00	269.88	5,640.00	-1,887.59	-6,408.03	6,411.97	0.00	0.00	0.00	
11,300.00	90.00	269.88	5,640.00	-1,887.81	-6,508.03	6,511.97	0.00	0.00	0.00	
11,400.00	90.00	269.88	5,640.00	-1,888.02	-6,608.03	6,611.97	0.00	0.00	0.00	
11,500.00	90.00	269.88	5,640.00	-1,888.23	-6,708.03	6,711.97	0.00	0.00	0.00	
11,600.00	90.00	269.88	5,640.00	-1,888.44	-6,808.03	6,811.97	0.00	0.00	0.00	
11,700.00	90.00	269.88	5,640.00	-1,888.66	-6,908.03	6,911.97	0.00	0.00	0.00	
11,800.00	90.00	269.88	5,640.00	-1,888.87	-7,008.03	7,011.97	0.00	0.00	0.00	
11,900.00	90.00	269.88	5,640.00	-1,889.08	-7,108.03	7,111.97	0.00	0.00	0.00	
12,000.00	90.00	269.88	5,640.00	-1,889.30	-7,208.03	7,211.97	0.00	0.00	0.00	
12,100.00	90.00	269.88	5,640.00	-1,889.51	-7,308.03	7,311.97	0.00	0.00	0.00	
12,200.00	90.00	269.88	5,640.00	-1,889.72	-7,408.03	7,411.97	0.00	0.00	0.00	
12,300.00	90.00	269.88	5,640.00	-1,889.93	-7,508.03	7,511.97	0.00	0.00	0.00	
12,400.00	90.00	269.88	5,640.00	-1,890.15	-7,608.03	7,611.97	0.00	0.00	0.00	
12,500.00	90.00	269.88	5,640.00	-1,890.36	-7,708.03	7,711.97	0.00	0.00	0.00	
12,600.00	90.00	269.88	5,640.00	-1,890.57	-7,808.03	7,811.97	0.00	0.00	0.00	
12,700.00	90.00	269.88	5,640.00	-1,890.78	-7,908.03	7,911.97	0.00	0.00	0.00	
12,800.00	90.00	269.88	5,640.00	-1,891.00	-8,008.03	8,011.97	0.00	0.00	0.00	
12,900.00	90.00	269.88	5,640.00	-1,891.21	-8,108.03	8,111.97	0.00	0.00	0.00	
13,000.00	90.00	269.88	5,640.00	-1,891.42	-8,208.03	8,211.97	0.00	0.00	0.00	
13,046.54	90.00	269.88	5,640.00	-1,891.52	-8,254.57	8,258.51	0.00	0.00	0.00	
Lease Entry @ 13046.54ft										
13,100.00	90.00	269.88	5,640.00	-1,891.64	-8,308.03	8,311.97	0.00	0.00	0.00	
13,200.00	90.00	269.88	5,640.00	-1,891.85	-8,408.03	8,411.97	0.00	0.00	0.00	
13,300.00	90.00	269.88	5,640.00	-1,892.06	-8,508.03	8,511.97	0.00	0.00	0.00	
13,400.00	90.00	269.88	5,640.00	-1,892.27	-8,608.03	8,611.97	0.00	0.00	0.00	
13,500.00	90.00	269.88	5,640.00	-1,892.49	-8,708.03	8,711.97	0.00	0.00	0.00	
13,600.00	90.00	269.88	5,640.00	-1,892.70	-8,808.03	8,811.97	0.00	0.00	0.00	
13,700.00	90.00	269.88	5,640.00	-1,892.91	-8,908.03	8,911.97	0.00	0.00	0.00	
13,800.00	90.00	269.88	5,640.00	-1,893.13	-9,008.03	9,011.97	0.00	0.00	0.00	
13,900.00	90.00	269.88	5,640.00	-1,893.34	-9,108.03	9,111.97	0.00	0.00	0.00	

Planning Report

Database:	EDM 5000.16 Single User Db	Local Co-ordinate Reference:	Well SPEED GOAT FED 3432-04H
Company:	VERDAD RESOURCES	TVD Reference:	RKB = 20' @ 4744.00usft (RIG)
Project:	WATTENBERG FIELD	MD Reference:	RKB = 20' @ 4744.00usft (RIG)
Site:	9N-58W-34 SPEED GOAT FED PAD	North Reference:	True
Well:	SPEED GOAT FED 3432-04H	Survey Calculation Method:	Minimum Curvature
Wellbore:	Plan C		
Design:	Permit Rev-1		

Planned Survey									
Measured Depth (usft)	Inclination (°)	Azimuth (°)	Vertical Depth (usft)	+N/-S (usft)	+E/-W (usft)	Vertical Section (usft)	Dogleg Rate (°/100usft)	Build Rate (°/100usft)	Turn Rate (°/100usft)
14,000.00	90.00	269.88	5,640.00	-1,893.55	-9,208.03	9,211.97	0.00	0.00	0.00
14,100.00	90.00	269.88	5,640.00	-1,893.76	-9,308.03	9,311.97	0.00	0.00	0.00
14,200.00	90.00	269.88	5,640.00	-1,893.98	-9,408.03	9,411.97	0.00	0.00	0.00
14,300.00	90.00	269.88	5,640.00	-1,894.19	-9,508.03	9,511.97	0.00	0.00	0.00
14,368.98	90.00	269.88	5,640.00	-1,894.34	-9,577.01	9,580.95	0.00	0.00	0.00
Lease Exit @ 14368.98ft									
14,400.00	90.00	269.88	5,640.00	-1,894.40	-9,608.03	9,611.97	0.00	0.00	0.00
14,500.00	90.00	269.88	5,640.00	-1,894.62	-9,708.03	9,711.97	0.00	0.00	0.00
14,600.00	90.00	269.88	5,640.00	-1,894.83	-9,808.03	9,811.97	0.00	0.00	0.00
14,700.00	90.00	269.88	5,640.00	-1,895.04	-9,908.02	9,911.97	0.00	0.00	0.00
14,800.00	90.00	269.88	5,640.00	-1,895.25	-10,008.02	10,011.97	0.00	0.00	0.00
14,900.00	90.00	269.88	5,640.00	-1,895.47	-10,108.02	10,111.97	0.00	0.00	0.00
15,000.00	90.00	269.88	5,640.00	-1,895.68	-10,208.02	10,211.97	0.00	0.00	0.00
15,100.00	90.00	269.88	5,640.00	-1,895.89	-10,308.02	10,311.97	0.00	0.00	0.00
15,200.00	90.00	269.88	5,640.00	-1,896.11	-10,408.02	10,411.97	0.00	0.00	0.00
15,300.00	90.00	269.88	5,640.00	-1,896.32	-10,508.02	10,511.97	0.00	0.00	0.00
15,400.00	90.00	269.88	5,640.00	-1,896.53	-10,608.02	10,611.97	0.00	0.00	0.00
15,500.00	90.00	269.88	5,640.00	-1,896.74	-10,708.02	10,711.97	0.00	0.00	0.00
15,600.00	90.00	269.88	5,640.00	-1,896.96	-10,808.02	10,811.97	0.00	0.00	0.00
15,700.00	90.00	269.88	5,640.00	-1,897.17	-10,908.02	10,911.97	0.00	0.00	0.00
15,800.00	90.00	269.88	5,640.00	-1,897.38	-11,008.02	11,011.97	0.00	0.00	0.00
15,900.00	90.00	269.88	5,640.00	-1,897.60	-11,108.02	11,111.97	0.00	0.00	0.00
16,000.00	90.00	269.88	5,640.00	-1,897.81	-11,208.02	11,211.97	0.00	0.00	0.00
16,100.00	90.00	269.88	5,640.00	-1,898.02	-11,308.02	11,311.97	0.00	0.00	0.00
16,200.00	90.00	269.88	5,640.00	-1,898.23	-11,408.02	11,411.97	0.00	0.00	0.00
16,300.00	90.00	269.88	5,640.00	-1,898.45	-11,508.02	11,511.97	0.00	0.00	0.00
16,400.00	90.00	269.88	5,640.00	-1,898.66	-11,608.02	11,611.97	0.00	0.00	0.00
16,500.00	90.00	269.88	5,640.00	-1,898.87	-11,708.02	11,711.97	0.00	0.00	0.00
16,600.00	90.00	269.88	5,640.00	-1,899.08	-11,808.02	11,811.97	0.00	0.00	0.00
16,700.00	90.00	269.88	5,640.00	-1,899.30	-11,908.02	11,911.97	0.00	0.00	0.00
16,800.00	90.00	269.88	5,640.00	-1,899.51	-12,008.02	12,011.97	0.00	0.00	0.00
16,900.00	90.00	269.88	5,640.00	-1,899.72	-12,108.02	12,111.97	0.00	0.00	0.00
17,000.00	90.00	269.88	5,640.00	-1,899.94	-12,208.02	12,211.97	0.00	0.00	0.00
17,100.00	90.00	269.88	5,640.00	-1,900.15	-12,308.02	12,311.97	0.00	0.00	0.00
17,200.00	90.00	269.88	5,640.00	-1,900.36	-12,408.02	12,411.97	0.00	0.00	0.00
17,300.00	90.00	269.88	5,640.00	-1,900.57	-12,508.02	12,511.97	0.00	0.00	0.00
17,400.00	90.00	269.88	5,640.00	-1,900.79	-12,608.02	12,611.97	0.00	0.00	0.00
17,500.00	90.00	269.88	5,640.00	-1,901.00	-12,708.02	12,711.97	0.00	0.00	0.00
17,600.00	90.00	269.88	5,640.00	-1,901.21	-12,808.02	12,811.97	0.00	0.00	0.00
17,700.00	90.00	269.88	5,640.00	-1,901.43	-12,908.02	12,911.97	0.00	0.00	0.00
17,800.00	90.00	269.88	5,640.00	-1,901.64	-13,008.02	13,011.97	0.00	0.00	0.00
17,900.00	90.00	269.88	5,640.00	-1,901.85	-13,108.02	13,111.97	0.00	0.00	0.00
18,000.00	90.00	269.88	5,640.00	-1,902.06	-13,208.02	13,211.97	0.00	0.00	0.00
18,100.00	90.00	269.88	5,640.00	-1,902.28	-13,308.02	13,311.97	0.00	0.00	0.00
18,200.00	90.00	269.88	5,640.00	-1,902.49	-13,408.02	13,411.97	0.00	0.00	0.00
18,300.00	90.00	269.88	5,640.00	-1,902.70	-13,508.02	13,511.97	0.00	0.00	0.00
18,400.00	90.00	269.88	5,640.00	-1,902.92	-13,608.02	13,611.97	0.00	0.00	0.00
18,500.00	90.00	269.88	5,640.00	-1,903.13	-13,708.02	13,711.97	0.00	0.00	0.00
18,600.00	90.00	269.88	5,640.00	-1,903.34	-13,808.02	13,811.97	0.00	0.00	0.00
18,700.00	90.00	269.88	5,640.00	-1,903.55	-13,908.02	13,911.97	0.00	0.00	0.00
18,800.00	90.00	269.88	5,640.00	-1,903.77	-14,008.02	14,011.97	0.00	0.00	0.00
18,900.00	90.00	269.88	5,640.00	-1,903.98	-14,108.02	14,111.97	0.00	0.00	0.00
19,000.00	90.00	269.88	5,640.00	-1,904.19	-14,208.02	14,211.97	0.00	0.00	0.00

Planning Report

Database:	EDM 5000.16 Single User Db	Local Co-ordinate Reference:	Well SPEED GOAT FED 3432-04H
Company:	VERDAD RESOURCES	TVD Reference:	RKB = 20' @ 4744.00usft (RIG)
Project:	WATTENBERG FIELD	MD Reference:	RKB = 20' @ 4744.00usft (RIG)
Site:	9N-58W-34 SPEED GOAT FED PAD	North Reference:	True
Well:	SPEED GOAT FED 3432-04H	Survey Calculation Method:	Minimum Curvature
Wellbore:	Plan C		
Design:	Permit Rev-1		

Planned Survey									
Measured Depth (usft)	Inclination (°)	Azimuth (°)	Vertical Depth (usft)	+N/-S (usft)	+E/-W (usft)	Vertical Section (usft)	Dogleg Rate (°/100usft)	Build Rate (°/100usft)	Turn Rate (°/100usft)
19,100.00	90.00	269.88	5,640.00	-1,904.41	-14,308.02	14,311.97	0.00	0.00	0.00
19,200.00	90.00	269.88	5,640.00	-1,904.62	-14,408.01	14,411.97	0.00	0.00	0.00
19,300.00	90.00	269.88	5,640.00	-1,904.83	-14,508.01	14,511.97	0.00	0.00	0.00
19,328.84	90.00	269.88	5,640.00	-1,904.89	-14,536.85	14,540.81	0.00	0.00	0.00
BPZ @ 19328.84ft									
19,400.00	90.00	269.88	5,640.00	-1,905.04	-14,608.01	14,611.97	0.00	0.00	0.00
19,418.66	90.00	269.88	5,640.00	-1,905.08	-14,626.68	14,630.64	0.00	0.00	0.00
TD Well @ 19418.66ft									

Casing Points				
Measured Depth (usft)	Vertical Depth (usft)	Name	Casing Diameter (")	Hole Diameter (")
1,490.85	1,474.00	9 5/8"	9-5/8	13-1/2

Plan Annotations				
Measured Depth (usft)	Vertical Depth (usft)	Local Coordinates		Comment
		+N/-S (usft)	+E/-W (usft)	
549.50	549.50	0.00	0.00	Begin Nudge @ 549.50ft
1,883.00	1,835.36	-258.11	-162.10	Hold Tangent @ 1883.00ft
5,579.64	5,138.71	-1,663.23	-1,044.56	KOP @ 5579.64ft :: DLS = 8°/100'
6,531.41	5,640.00	-1,877.66	-1,739.45	End Build @ 6531.41ft
13,046.54	5,640.00	-1,891.52	-8,254.57	Lease Entry @ 13046.54ft
14,368.98	5,640.00	-1,894.34	-9,577.01	Lease Exit @ 14368.98ft
19,328.84	5,640.00	-1,904.89	-14,536.85	BPZ @ 19328.84ft
19,418.66	5,640.00	-1,905.08	-14,626.68	TD Well @ 19418.66ft