

VERDAD RESOURCES

WATTENBERG FIELD

9N-58W-34 SPEED GOAT FED PAD

SPEED GOAT FED 3432-03H

Plan C

Plan: Permit Rev-1

Standard Planning Report

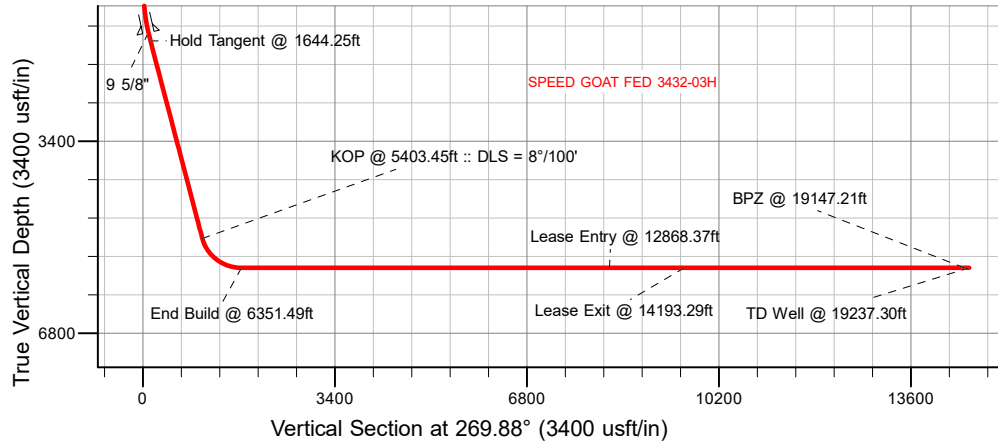
25 January, 2024

Project: WATTENBERG FIELD
Site: 9N-58W-34 SPEED GOAT FED PAD
Well: SPEED GOAT FED 3432-03H
Wellbore: Plan C
Design: Permit Rev-1

VERDAD RESOURCES

CASING DETAILS

TVD	MD	Name	Size
1474.00	1489.41	9 5/8"	9-5/8



SECTION DETAILS

Sec	MD	Inc	Azi	TVD	+N-S	+E-W	Dleg	TFace	VSec	Target
1	0.00	0.00	0.00	0.00	0.00	0.00	0.00	0.00	0.00	
2	575.75	0.00	0.00	575.75	0.00	0.00	0.00	0.00	0.00	
3	1644.25	21.37	222.04	1619.65	-146.28	-131.90	2.00	222.04	132.20	
4	5403.45	21.37	222.04	5120.39	-1163.61	-1049.19	0.00	0.00	1051.62	
5	6351.49	90.00	269.88	5640.00	-1315.79	-1743.32	8.00	49.86	1746.07	
6	19237.30	90.00	269.88	5640.00	-1342.92	-14629.11	0.00	0.00	14631.89	SPEED GOAT FED 3432-03H_BHL

WELLBORE TARGET DETAILS (LAT/LONG)

Name	MD	TVD	Northing	Easting	Latitude	Longitude
SPEED GOAT FED 3432-03H_SHL	0.00	0.00	1507335.67	3459106.06	40.714258	-103.843792
SPEED GOAT FED 3432-03H_KOP	5403.45	5120.39	1506152.66	3458078.79	40.711064	-103.847577
SPEED GOAT FED 3432-03H_LP	6351.49	5640.00	1505987.55	3457387.62	40.710646	-103.850080
SPEED GOAT FED 3432-03H_Lease Entry	12868.37	5640.00	1505852.50	3450872.13	40.710606	-103.873587
SPEED GOAT FED 3432-03H_Lease Exit	14193.29	5640.00	1505824.96	3449547.51	40.710597	-103.878366
SPEED GOAT FED 3432-03H_BPZ	19147.21	5640.00	1505722.12	3444594.66	40.710562	-103.896235
SPEED GOAT FED 3432-03H_BHL	19237.30	5640.00	1505719.76	3444504.59	40.710560	-103.896560

SHL
263' FNL
961' FEL

KOP
1418' FNL
2020' FEL

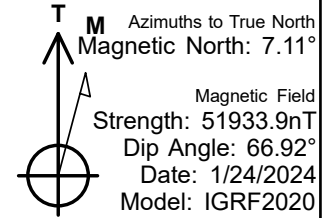
LP
1565' FNL
2549' FWL

LEASE ENTRY
1527' FNL
1325' FWL

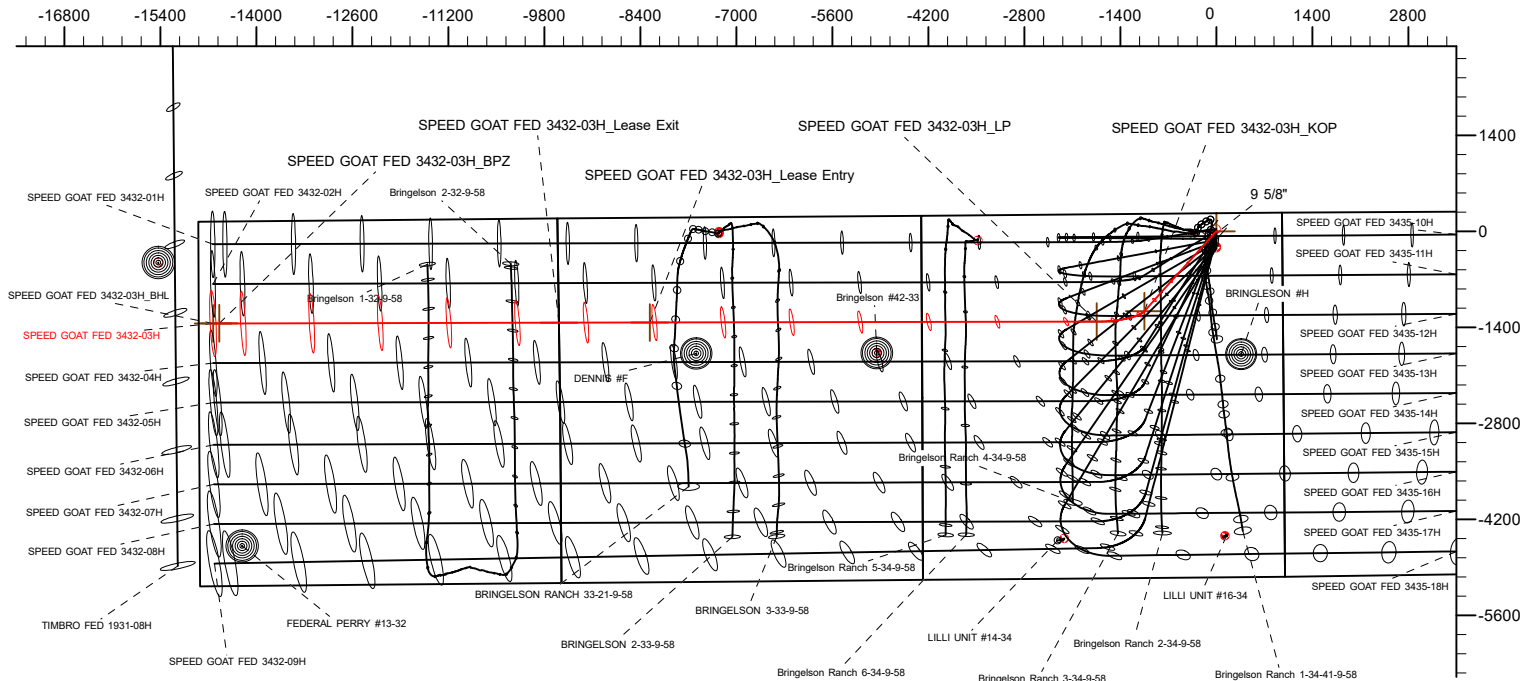
LEASE EXIT
1520' FNL
0' FEL

BPZ
1485' FNL
300' FWL

BHL
1485' FNL
210' FWL



West(-)/East(+) (2800 usft/in)



South(-)/North(+) (2800 usft/in)

WELL DETAILS: SPEED GOAT FED 3432-03H

GL = 4724'
RKB = 20' @ 4744.00usft (RIG)

Plan: Permit Rev-1 (SPEED GOAT FED 3432-03H/Plan C)

Date: 1/25/2024

Planning Report

Database:	EDM 5000.16 Single User Db	Local Co-ordinate Reference:	Well SPEED GOAT FED 3432-03H
Company:	VERDAD RESOURCES	TVD Reference:	RKB = 20' @ 4744.00usft (RIG)
Project:	WATTENBERG FIELD	MD Reference:	RKB = 20' @ 4744.00usft (RIG)
Site:	9N-58W-34 SPEED GOAT FED PAD	North Reference:	True
Well:	SPEED GOAT FED 3432-03H	Survey Calculation Method:	Minimum Curvature
Wellbore:	Plan C		
Design:	Permit Rev-1		

Project	WATTENBERG FIELD		
Map System:	US State Plane 1983	System Datum:	Mean Sea Level
Geo Datum:	North American Datum 1983		
Map Zone:	Colorado Northern Zone		

Site	9N-58W-34 SPEED GOAT FED PAD			
Site Position:		Northing:	1,507,367.36 usft	Latitude: 40.714345
From:	Lat/Long	Easting:	3,459,105.19 usft	Longitude: -103.843793
Position Uncertainty:	0.00 usft	Slot Radius:	13-3/16 "	

Well	SPEED GOAT FED 3432-03H			
Well Position	+N/-S	0.00 usft	Northing:	1,507,335.67 usft
	+E/-W	0.00 usft	Easting:	3,459,106.06 usft
Position Uncertainty		3.28 usft	Wellhead Elevation:	usft
Grid Convergence:		1.07 °	Ground Level:	4,724.00 usft

Wellbore	Plan C				
Magnetics	Model Name	Sample Date	Declination (°)	Dip Angle (°)	Field Strength (nT)
	IGRF202013	1/24/2024	7.11	66.92	51,933.94559138

Design	Permit Rev-1				
Audit Notes:					
Version:		Phase:	PLAN	Tie On Depth:	0.00
Vertical Section:	Depth From (TVD) (usft)	+N/-S (usft)	+E/-W (usft)	Direction (°)	
	0.00	0.00	0.00	269.88	

Plan Survey Tool Program		Date	1/25/2024		
Depth From (usft)	Depth To (usft)	Survey (Wellbore)	Tool Name	Remarks	
1	0.00	1,474.00	Permit Rev-1 (Plan C)	ISCWSA MWD	Fixed:v2:standard declination
2	1,474.00	19,237.30	Permit Rev-1 (Plan C)	ISCWSA MWD	Fixed:v2:standard declination

Planning Report

Database:	EDM 5000.16 Single User Db	Local Co-ordinate Reference:	Well SPEED GOAT FED 3432-03H
Company:	VERDAD RESOURCES	TVD Reference:	RKB = 20' @ 4744.00usft (RIG)
Project:	WATTENBERG FIELD	MD Reference:	RKB = 20' @ 4744.00usft (RIG)
Site:	9N-58W-34 SPEED GOAT FED PAD	North Reference:	True
Well:	SPEED GOAT FED 3432-03H	Survey Calculation Method:	Minimum Curvature
Wellbore:	Plan C		
Design:	Permit Rev-1		

Plan Sections										
Measured Depth (usft)	Inclination (°)	Azimuth (°)	Vertical Depth (usft)	+N/-S (usft)	+E/-W (usft)	Dogleg Rate (°/100usft)	Build Rate (°/100usft)	Turn Rate (°/100usft)	TFO (°)	Target
0.00	0.00	0.00	0.00	0.00	0.00	0.00	0.00	0.00	0.00	
575.75	0.00	0.00	575.75	0.00	0.00	0.00	0.00	0.00	0.00	
1,644.25	21.37	222.04	1,619.65	-146.28	-131.90	2.00	2.00	0.00	222.04	
5,403.45	21.37	222.04	5,120.39	-1,163.61	-1,049.19	0.00	0.00	0.00	0.00	
6,351.49	90.00	269.88	5,640.00	-1,315.79	-1,743.32	8.00	7.24	5.05	49.86	
19,237.30	90.00	269.88	5,640.00	-1,342.92	-14,629.11	0.00	0.00	0.00	0.00	SPEED GOAT FED 3

Planning Report

Database:	EDM 5000.16 Single User Db	Local Co-ordinate Reference:	Well SPEED GOAT FED 3432-03H
Company:	VERDAD RESOURCES	TVD Reference:	RKB = 20' @ 4744.00usft (RIG)
Project:	WATTENBERG FIELD	MD Reference:	RKB = 20' @ 4744.00usft (RIG)
Site:	9N-58W-34 SPEED GOAT FED PAD	North Reference:	True
Well:	SPEED GOAT FED 3432-03H	Survey Calculation Method:	Minimum Curvature
Wellbore:	Plan C		
Design:	Permit Rev-1		

Planned Survey									
Measured Depth (usft)	Inclination (°)	Azimuth (°)	Vertical Depth (usft)	+N/-S (usft)	+E/-W (usft)	Vertical Section (usft)	Dogleg Rate (°/100usft)	Build Rate (°/100usft)	Turn Rate (°/100usft)
0.00	0.00	0.00	0.00	0.00	0.00	0.00	0.00	0.00	0.00
100.00	0.00	0.00	100.00	0.00	0.00	0.00	0.00	0.00	0.00
200.00	0.00	0.00	200.00	0.00	0.00	0.00	0.00	0.00	0.00
300.00	0.00	0.00	300.00	0.00	0.00	0.00	0.00	0.00	0.00
400.00	0.00	0.00	400.00	0.00	0.00	0.00	0.00	0.00	0.00
500.00	0.00	0.00	500.00	0.00	0.00	0.00	0.00	0.00	0.00
575.75	0.00	0.00	575.75	0.00	0.00	0.00	0.00	0.00	0.00
Begin Nudge @ 575.75ft									
600.00	0.48	222.04	600.00	-0.08	-0.07	0.07	2.00	2.00	0.00
700.00	2.48	222.04	699.96	-2.00	-1.80	1.81	2.00	2.00	0.00
800.00	4.48	222.04	799.77	-6.52	-5.87	5.89	2.00	2.00	0.00
900.00	6.48	222.04	899.31	-13.61	-12.27	12.30	2.00	2.00	0.00
1,000.00	8.48	222.04	998.45	-23.29	-21.00	21.05	2.00	2.00	0.00
1,100.00	10.48	222.04	1,097.08	-35.53	-32.03	32.11	2.00	2.00	0.00
1,200.00	12.48	222.04	1,195.07	-50.31	-45.37	45.47	2.00	2.00	0.00
1,300.00	14.48	222.04	1,292.31	-67.63	-60.98	61.12	2.00	2.00	0.00
1,400.00	16.48	222.04	1,388.67	-87.46	-78.86	79.04	2.00	2.00	0.00
1,489.41	18.27	222.04	1,474.00	-107.29	-96.74	96.97	2.00	2.00	0.00
9 5/8"									
1,500.00	18.48	222.04	1,484.05	-109.77	-98.98	99.21	2.00	2.00	0.00
1,600.00	20.48	222.04	1,578.32	-134.54	-121.31	121.59	2.00	2.00	0.00
1,644.25	21.37	222.04	1,619.65	-146.28	-131.90	132.20	2.00	2.00	0.00
Hold Tangent @ 1644.25ft									
1,700.00	21.37	222.04	1,671.57	-161.37	-145.50	145.84	0.00	0.00	0.00
1,800.00	21.37	222.04	1,764.69	-188.43	-169.90	170.30	0.00	0.00	0.00
1,900.00	21.37	222.04	1,857.81	-215.49	-194.30	194.75	0.00	0.00	0.00
2,000.00	21.37	222.04	1,950.94	-242.55	-218.70	219.21	0.00	0.00	0.00
2,100.00	21.37	222.04	2,044.06	-269.62	-243.11	243.67	0.00	0.00	0.00
2,200.00	21.37	222.04	2,137.19	-296.68	-267.51	268.13	0.00	0.00	0.00
2,300.00	21.37	222.04	2,230.31	-323.74	-291.91	292.59	0.00	0.00	0.00
2,400.00	21.37	222.04	2,323.44	-350.80	-316.31	317.04	0.00	0.00	0.00
2,500.00	21.37	222.04	2,416.56	-377.87	-340.71	341.50	0.00	0.00	0.00
2,600.00	21.37	222.04	2,509.69	-404.93	-365.11	365.96	0.00	0.00	0.00
2,700.00	21.37	222.04	2,602.81	-431.99	-389.51	390.42	0.00	0.00	0.00
2,800.00	21.37	222.04	2,695.94	-459.05	-413.91	414.88	0.00	0.00	0.00
2,900.00	21.37	222.04	2,789.06	-486.12	-438.32	439.33	0.00	0.00	0.00
3,000.00	21.37	222.04	2,882.19	-513.18	-462.72	463.79	0.00	0.00	0.00
3,100.00	21.37	222.04	2,975.31	-540.24	-487.12	488.25	0.00	0.00	0.00
3,200.00	21.37	222.04	3,068.44	-567.30	-511.52	512.71	0.00	0.00	0.00
3,300.00	21.37	222.04	3,161.56	-594.37	-535.92	537.16	0.00	0.00	0.00
3,400.00	21.37	222.04	3,254.68	-621.43	-560.32	561.62	0.00	0.00	0.00
3,500.00	21.37	222.04	3,347.81	-648.49	-584.72	586.08	0.00	0.00	0.00
3,600.00	21.37	222.04	3,440.93	-675.55	-609.12	610.54	0.00	0.00	0.00
3,700.00	21.37	222.04	3,534.06	-702.62	-633.53	635.00	0.00	0.00	0.00
3,800.00	21.37	222.04	3,627.18	-729.68	-657.93	659.45	0.00	0.00	0.00
3,900.00	21.37	222.04	3,720.31	-756.74	-682.33	683.91	0.00	0.00	0.00
4,000.00	21.37	222.04	3,813.43	-783.80	-706.73	708.37	0.00	0.00	0.00
4,100.00	21.37	222.04	3,906.56	-810.86	-731.13	732.83	0.00	0.00	0.00
4,200.00	21.37	222.04	3,999.68	-837.93	-755.53	757.29	0.00	0.00	0.00
4,300.00	21.37	222.04	4,092.81	-864.99	-779.93	781.74	0.00	0.00	0.00
4,400.00	21.37	222.04	4,185.93	-892.05	-804.34	806.20	0.00	0.00	0.00
4,500.00	21.37	222.04	4,279.06	-919.11	-828.74	830.66	0.00	0.00	0.00
4,600.00	21.37	222.04	4,372.18	-946.18	-853.14	855.12	0.00	0.00	0.00

Planning Report

Database:	EDM 5000.16 Single User Db	Local Co-ordinate Reference:	Well SPEED GOAT FED 3432-03H
Company:	VERDAD RESOURCES	TVD Reference:	RKB = 20' @ 4744.00usft (RIG)
Project:	WATTENBERG FIELD	MD Reference:	RKB = 20' @ 4744.00usft (RIG)
Site:	9N-58W-34 SPEED GOAT FED PAD	North Reference:	True
Well:	SPEED GOAT FED 3432-03H	Survey Calculation Method:	Minimum Curvature
Wellbore:	Plan C		
Design:	Permit Rev-1		

Planned Survey									
Measured Depth (usft)	Inclination (°)	Azimuth (°)	Vertical Depth (usft)	+N/-S (usft)	+E/-W (usft)	Vertical Section (usft)	Dogleg Rate (°/100usft)	Build Rate (°/100usft)	Turn Rate (°/100usft)
4,700.00	21.37	222.04	4,465.31	-973.24	-877.54	879.58	0.00	0.00	0.00
4,800.00	21.37	222.04	4,558.43	-1,000.30	-901.94	904.03	0.00	0.00	0.00
4,900.00	21.37	222.04	4,651.55	-1,027.36	-926.34	928.49	0.00	0.00	0.00
5,000.00	21.37	222.04	4,744.68	-1,054.43	-950.74	952.95	0.00	0.00	0.00
5,100.00	21.37	222.04	4,837.80	-1,081.49	-975.14	977.41	0.00	0.00	0.00
5,200.00	21.37	222.04	4,930.93	-1,108.55	-999.55	1,001.87	0.00	0.00	0.00
5,300.00	21.37	222.04	5,024.05	-1,135.61	-1,023.95	1,026.32	0.00	0.00	0.00
5,403.45	21.37	222.04	5,120.39	-1,163.61	-1,049.19	1,051.62	0.00	0.00	0.00
KOP @ 5403.45ft :: DLS = 8°/100'									
5,450.00	23.93	229.07	5,163.35	-1,176.10	-1,062.01	1,064.47	8.00	5.50	15.10
5,500.00	26.97	235.13	5,208.50	-1,189.23	-1,078.98	1,081.47	8.00	6.08	12.13
5,550.00	30.22	240.02	5,252.41	-1,202.01	-1,099.19	1,101.71	8.00	6.50	9.77
5,600.00	33.62	244.01	5,294.84	-1,214.36	-1,122.54	1,125.08	8.00	6.80	8.00
5,650.00	37.12	247.35	5,335.61	-1,226.24	-1,148.92	1,151.49	8.00	7.01	6.67
5,700.00	40.71	250.18	5,374.51	-1,237.59	-1,178.20	1,180.78	8.00	7.17	5.66
5,750.00	44.35	252.62	5,411.35	-1,248.34	-1,210.23	1,212.84	8.00	7.29	4.89
5,800.00	48.04	254.76	5,445.96	-1,258.45	-1,244.86	1,247.49	8.00	7.38	4.28
5,850.00	51.77	256.67	5,478.16	-1,267.87	-1,281.92	1,284.57	8.00	7.45	3.81
5,900.00	55.52	258.39	5,507.80	-1,276.55	-1,321.23	1,323.90	8.00	7.51	3.44
5,950.00	59.29	259.96	5,534.73	-1,284.45	-1,362.60	1,365.28	8.00	7.55	3.14
6,000.00	63.09	261.41	5,558.82	-1,291.53	-1,405.82	1,408.52	8.00	7.58	2.90
6,050.00	66.89	262.77	5,579.95	-1,297.75	-1,450.69	1,453.41	8.00	7.61	2.72
6,100.00	70.71	264.05	5,598.03	-1,303.09	-1,496.99	1,499.72	8.00	7.63	2.57
6,150.00	74.54	265.28	5,612.96	-1,307.52	-1,544.50	1,547.23	8.00	7.65	2.45
6,200.00	78.37	266.46	5,624.67	-1,311.02	-1,592.97	1,595.71	8.00	7.66	2.36
6,250.00	82.20	267.60	5,633.11	-1,313.57	-1,642.17	1,644.92	8.00	7.67	2.29
6,300.00	86.04	268.73	5,638.23	-1,315.16	-1,691.88	1,694.63	8.00	7.68	2.25
6,351.49	90.00	269.88	5,640.00	-1,315.79	-1,743.32	1,746.07	8.00	7.68	2.23
End Build @ 6351.49ft									
6,400.00	90.00	269.88	5,640.00	-1,315.89	-1,791.83	1,794.58	0.00	0.00	0.00
6,500.00	90.00	269.88	5,640.00	-1,316.10	-1,891.83	1,894.58	0.00	0.00	0.00
6,600.00	90.00	269.88	5,640.00	-1,316.31	-1,991.83	1,994.58	0.00	0.00	0.00
6,700.00	90.00	269.88	5,640.00	-1,316.52	-2,091.83	2,094.58	0.00	0.00	0.00
6,800.00	90.00	269.88	5,640.00	-1,316.73	-2,191.83	2,194.58	0.00	0.00	0.00
6,900.00	90.00	269.88	5,640.00	-1,316.94	-2,291.83	2,294.58	0.00	0.00	0.00
7,000.00	90.00	269.88	5,640.00	-1,317.15	-2,391.83	2,394.58	0.00	0.00	0.00
7,100.00	90.00	269.88	5,640.00	-1,317.36	-2,491.83	2,494.58	0.00	0.00	0.00
7,200.00	90.00	269.88	5,640.00	-1,317.57	-2,591.83	2,594.58	0.00	0.00	0.00
7,300.00	90.00	269.88	5,640.00	-1,317.78	-2,691.83	2,694.58	0.00	0.00	0.00
7,400.00	90.00	269.88	5,640.00	-1,317.99	-2,791.83	2,794.58	0.00	0.00	0.00
7,500.00	90.00	269.88	5,640.00	-1,318.20	-2,891.83	2,894.58	0.00	0.00	0.00
7,600.00	90.00	269.88	5,640.00	-1,318.41	-2,991.83	2,994.58	0.00	0.00	0.00
7,700.00	90.00	269.88	5,640.00	-1,318.63	-3,091.83	3,094.58	0.00	0.00	0.00
7,800.00	90.00	269.88	5,640.00	-1,318.84	-3,191.83	3,194.58	0.00	0.00	0.00
7,900.00	90.00	269.88	5,640.00	-1,319.05	-3,291.83	3,294.58	0.00	0.00	0.00
8,000.00	90.00	269.88	5,640.00	-1,319.26	-3,391.83	3,394.58	0.00	0.00	0.00
8,100.00	90.00	269.88	5,640.00	-1,319.47	-3,491.83	3,494.58	0.00	0.00	0.00
8,200.00	90.00	269.88	5,640.00	-1,319.68	-3,591.83	3,594.58	0.00	0.00	0.00
8,300.00	90.00	269.88	5,640.00	-1,319.89	-3,691.83	3,694.58	0.00	0.00	0.00
8,400.00	90.00	269.88	5,640.00	-1,320.10	-3,791.83	3,794.58	0.00	0.00	0.00
8,500.00	90.00	269.88	5,640.00	-1,320.31	-3,891.83	3,894.58	0.00	0.00	0.00
8,600.00	90.00	269.88	5,640.00	-1,320.52	-3,991.83	3,994.58	0.00	0.00	0.00
8,700.00	90.00	269.88	5,640.00	-1,320.73	-4,091.83	4,094.58	0.00	0.00	0.00
8,800.00	90.00	269.88	5,640.00	-1,320.94	-4,191.83	4,194.58	0.00	0.00	0.00

Planning Report

Database:	EDM 5000.16 Single User Db	Local Co-ordinate Reference:	Well SPEED GOAT FED 3432-03H
Company:	VERDAD RESOURCES	TVD Reference:	RKB = 20' @ 4744.00usft (RIG)
Project:	WATTENBERG FIELD	MD Reference:	RKB = 20' @ 4744.00usft (RIG)
Site:	9N-58W-34 SPEED GOAT FED PAD	North Reference:	True
Well:	SPEED GOAT FED 3432-03H	Survey Calculation Method:	Minimum Curvature
Wellbore:	Plan C		
Design:	Permit Rev-1		

Planned Survey									
Measured Depth (usft)	Inclination (°)	Azimuth (°)	Vertical Depth (usft)	+N/-S (usft)	+E/-W (usft)	Vertical Section (usft)	Dogleg Rate (°/100usft)	Build Rate (°/100usft)	Turn Rate (°/100usft)
8,900.00	90.00	269.88	5,640.00	-1,321.15	-4,291.83	4,294.58	0.00	0.00	0.00
9,000.00	90.00	269.88	5,640.00	-1,321.36	-4,391.83	4,394.58	0.00	0.00	0.00
9,100.00	90.00	269.88	5,640.00	-1,321.57	-4,491.82	4,494.58	0.00	0.00	0.00
9,200.00	90.00	269.88	5,640.00	-1,321.78	-4,591.82	4,594.58	0.00	0.00	0.00
9,300.00	90.00	269.88	5,640.00	-1,321.99	-4,691.82	4,694.58	0.00	0.00	0.00
9,400.00	90.00	269.88	5,640.00	-1,322.21	-4,791.82	4,794.58	0.00	0.00	0.00
9,500.00	90.00	269.88	5,640.00	-1,322.42	-4,891.82	4,894.58	0.00	0.00	0.00
9,600.00	90.00	269.88	5,640.00	-1,322.63	-4,991.82	4,994.58	0.00	0.00	0.00
9,700.00	90.00	269.88	5,640.00	-1,322.84	-5,091.82	5,094.58	0.00	0.00	0.00
9,800.00	90.00	269.88	5,640.00	-1,323.05	-5,191.82	5,194.58	0.00	0.00	0.00
9,900.00	90.00	269.88	5,640.00	-1,323.26	-5,291.82	5,294.58	0.00	0.00	0.00
10,000.00	90.00	269.88	5,640.00	-1,323.47	-5,391.82	5,394.58	0.00	0.00	0.00
10,100.00	90.00	269.88	5,640.00	-1,323.68	-5,491.82	5,494.58	0.00	0.00	0.00
10,200.00	90.00	269.88	5,640.00	-1,323.89	-5,591.82	5,594.58	0.00	0.00	0.00
10,300.00	90.00	269.88	5,640.00	-1,324.10	-5,691.82	5,694.58	0.00	0.00	0.00
10,400.00	90.00	269.88	5,640.00	-1,324.31	-5,791.82	5,794.58	0.00	0.00	0.00
10,500.00	90.00	269.88	5,640.00	-1,324.52	-5,891.82	5,894.58	0.00	0.00	0.00
10,600.00	90.00	269.88	5,640.00	-1,324.73	-5,991.82	5,994.58	0.00	0.00	0.00
10,700.00	90.00	269.88	5,640.00	-1,324.94	-6,091.82	6,094.58	0.00	0.00	0.00
10,800.00	90.00	269.88	5,640.00	-1,325.15	-6,191.82	6,194.58	0.00	0.00	0.00
10,900.00	90.00	269.88	5,640.00	-1,325.36	-6,291.82	6,294.58	0.00	0.00	0.00
11,000.00	90.00	269.88	5,640.00	-1,325.57	-6,391.82	6,394.58	0.00	0.00	0.00
11,100.00	90.00	269.88	5,640.00	-1,325.79	-6,491.82	6,494.58	0.00	0.00	0.00
11,200.00	90.00	269.88	5,640.00	-1,326.00	-6,591.82	6,594.58	0.00	0.00	0.00
11,300.00	90.00	269.88	5,640.00	-1,326.21	-6,691.82	6,694.58	0.00	0.00	0.00
11,400.00	90.00	269.88	5,640.00	-1,326.42	-6,791.82	6,794.58	0.00	0.00	0.00
11,500.00	90.00	269.88	5,640.00	-1,326.63	-6,891.82	6,894.58	0.00	0.00	0.00
11,600.00	90.00	269.88	5,640.00	-1,326.84	-6,991.82	6,994.58	0.00	0.00	0.00
11,700.00	90.00	269.88	5,640.00	-1,327.05	-7,091.82	7,094.58	0.00	0.00	0.00
11,800.00	90.00	269.88	5,640.00	-1,327.26	-7,191.82	7,194.58	0.00	0.00	0.00
11,900.00	90.00	269.88	5,640.00	-1,327.47	-7,291.82	7,294.58	0.00	0.00	0.00
12,000.00	90.00	269.88	5,640.00	-1,327.68	-7,391.82	7,394.58	0.00	0.00	0.00
12,100.00	90.00	269.88	5,640.00	-1,327.89	-7,491.82	7,494.58	0.00	0.00	0.00
12,200.00	90.00	269.88	5,640.00	-1,328.10	-7,591.82	7,594.58	0.00	0.00	0.00
12,300.00	90.00	269.88	5,640.00	-1,328.31	-7,691.82	7,694.58	0.00	0.00	0.00
12,400.00	90.00	269.88	5,640.00	-1,328.52	-7,791.82	7,794.58	0.00	0.00	0.00
12,500.00	90.00	269.88	5,640.00	-1,328.73	-7,891.82	7,894.58	0.00	0.00	0.00
12,600.00	90.00	269.88	5,640.00	-1,328.94	-7,991.82	7,994.58	0.00	0.00	0.00
12,700.00	90.00	269.88	5,640.00	-1,329.15	-8,091.82	8,094.58	0.00	0.00	0.00
12,800.00	90.00	269.88	5,640.00	-1,329.37	-8,191.82	8,194.58	0.00	0.00	0.00
12,868.37	90.00	269.88	5,640.00	-1,329.51	-8,260.19	8,262.95	0.00	0.00	0.00
Lease Entry @ 12868.37ft									
12,900.00	90.00	269.88	5,640.00	-1,329.58	-8,291.82	8,294.58	0.00	0.00	0.00
13,000.00	90.00	269.88	5,640.00	-1,329.79	-8,391.82	8,394.58	0.00	0.00	0.00
13,100.00	90.00	269.88	5,640.00	-1,330.00	-8,491.82	8,494.58	0.00	0.00	0.00
13,200.00	90.00	269.88	5,640.00	-1,330.21	-8,591.82	8,594.58	0.00	0.00	0.00
13,300.00	90.00	269.88	5,640.00	-1,330.42	-8,691.82	8,694.58	0.00	0.00	0.00
13,400.00	90.00	269.88	5,640.00	-1,330.63	-8,791.82	8,794.58	0.00	0.00	0.00
13,500.00	90.00	269.88	5,640.00	-1,330.84	-8,891.82	8,894.58	0.00	0.00	0.00
13,600.00	90.00	269.88	5,640.00	-1,331.05	-8,991.81	8,994.58	0.00	0.00	0.00
13,700.00	90.00	269.88	5,640.00	-1,331.26	-9,091.81	9,094.58	0.00	0.00	0.00
13,800.00	90.00	269.88	5,640.00	-1,331.47	-9,191.81	9,194.58	0.00	0.00	0.00
13,900.00	90.00	269.88	5,640.00	-1,331.68	-9,291.81	9,294.58	0.00	0.00	0.00
14,000.00	90.00	269.88	5,640.00	-1,331.89	-9,391.81	9,394.58	0.00	0.00	0.00

Planning Report

Database:	EDM 5000.16 Single User Db	Local Co-ordinate Reference:	Well SPEED GOAT FED 3432-03H
Company:	VERDAD RESOURCES	TVD Reference:	RKB = 20' @ 4744.00usft (RIG)
Project:	WATTENBERG FIELD	MD Reference:	RKB = 20' @ 4744.00usft (RIG)
Site:	9N-58W-34 SPEED GOAT FED PAD	North Reference:	True
Well:	SPEED GOAT FED 3432-03H	Survey Calculation Method:	Minimum Curvature
Wellbore:	Plan C		
Design:	Permit Rev-1		

Planned Survey									
Measured Depth (usft)	Inclination (°)	Azimuth (°)	Vertical Depth (usft)	+N/-S (usft)	+E/-W (usft)	Vertical Section (usft)	Dogleg Rate (°/100usft)	Build Rate (°/100usft)	Turn Rate (°/100usft)
14,100.00	90.00	269.88	5,640.00	-1,332.10	-9,491.81	9,494.58	0.00	0.00	0.00
14,193.29	90.00	269.88	5,640.00	-1,332.30	-9,585.10	9,587.87	0.00	0.00	0.00
Lease Exit @ 14193.29ft									
14,200.00	90.00	269.88	5,640.00	-1,332.31	-9,591.81	9,594.58	0.00	0.00	0.00
14,300.00	90.00	269.88	5,640.00	-1,332.52	-9,691.81	9,694.58	0.00	0.00	0.00
14,400.00	90.00	269.88	5,640.00	-1,332.73	-9,791.81	9,794.58	0.00	0.00	0.00
14,500.00	90.00	269.88	5,640.00	-1,332.95	-9,891.81	9,894.58	0.00	0.00	0.00
14,600.00	90.00	269.88	5,640.00	-1,333.16	-9,991.81	9,994.58	0.00	0.00	0.00
14,700.00	90.00	269.88	5,640.00	-1,333.37	-10,091.81	10,094.58	0.00	0.00	0.00
14,800.00	90.00	269.88	5,640.00	-1,333.58	-10,191.81	10,194.58	0.00	0.00	0.00
14,900.00	90.00	269.88	5,640.00	-1,333.79	-10,291.81	10,294.58	0.00	0.00	0.00
15,000.00	90.00	269.88	5,640.00	-1,334.00	-10,391.81	10,394.58	0.00	0.00	0.00
15,100.00	90.00	269.88	5,640.00	-1,334.21	-10,491.81	10,494.58	0.00	0.00	0.00
15,200.00	90.00	269.88	5,640.00	-1,334.42	-10,591.81	10,594.58	0.00	0.00	0.00
15,300.00	90.00	269.88	5,640.00	-1,334.63	-10,691.81	10,694.58	0.00	0.00	0.00
15,400.00	90.00	269.88	5,640.00	-1,334.84	-10,791.81	10,794.58	0.00	0.00	0.00
15,500.00	90.00	269.88	5,640.00	-1,335.05	-10,891.81	10,894.58	0.00	0.00	0.00
15,600.00	90.00	269.88	5,640.00	-1,335.26	-10,991.81	10,994.58	0.00	0.00	0.00
15,700.00	90.00	269.88	5,640.00	-1,335.47	-11,091.81	11,094.58	0.00	0.00	0.00
15,800.00	90.00	269.88	5,640.00	-1,335.68	-11,191.81	11,194.58	0.00	0.00	0.00
15,900.00	90.00	269.88	5,640.00	-1,335.89	-11,291.81	11,294.58	0.00	0.00	0.00
16,000.00	90.00	269.88	5,640.00	-1,336.10	-11,391.81	11,394.58	0.00	0.00	0.00
16,100.00	90.00	269.88	5,640.00	-1,336.31	-11,491.81	11,494.58	0.00	0.00	0.00
16,200.00	90.00	269.88	5,640.00	-1,336.53	-11,591.81	11,594.58	0.00	0.00	0.00
16,300.00	90.00	269.88	5,640.00	-1,336.74	-11,691.81	11,694.58	0.00	0.00	0.00
16,400.00	90.00	269.88	5,640.00	-1,336.95	-11,791.81	11,794.58	0.00	0.00	0.00
16,500.00	90.00	269.88	5,640.00	-1,337.16	-11,891.81	11,894.58	0.00	0.00	0.00
16,600.00	90.00	269.88	5,640.00	-1,337.37	-11,991.81	11,994.58	0.00	0.00	0.00
16,700.00	90.00	269.88	5,640.00	-1,337.58	-12,091.81	12,094.58	0.00	0.00	0.00
16,800.00	90.00	269.88	5,640.00	-1,337.79	-12,191.81	12,194.58	0.00	0.00	0.00
16,900.00	90.00	269.88	5,640.00	-1,338.00	-12,291.81	12,294.58	0.00	0.00	0.00
17,000.00	90.00	269.88	5,640.00	-1,338.21	-12,391.81	12,394.58	0.00	0.00	0.00
17,100.00	90.00	269.88	5,640.00	-1,338.42	-12,491.81	12,494.58	0.00	0.00	0.00
17,200.00	90.00	269.88	5,640.00	-1,338.63	-12,591.81	12,594.58	0.00	0.00	0.00
17,300.00	90.00	269.88	5,640.00	-1,338.84	-12,691.81	12,694.58	0.00	0.00	0.00
17,400.00	90.00	269.88	5,640.00	-1,339.05	-12,791.81	12,794.58	0.00	0.00	0.00
17,500.00	90.00	269.88	5,640.00	-1,339.26	-12,891.81	12,894.58	0.00	0.00	0.00
17,600.00	90.00	269.88	5,640.00	-1,339.47	-12,991.81	12,994.58	0.00	0.00	0.00
17,700.00	90.00	269.88	5,640.00	-1,339.68	-13,091.81	13,094.58	0.00	0.00	0.00
17,800.00	90.00	269.88	5,640.00	-1,339.89	-13,191.81	13,194.58	0.00	0.00	0.00
17,900.00	90.00	269.88	5,640.00	-1,340.11	-13,291.81	13,294.58	0.00	0.00	0.00
18,000.00	90.00	269.88	5,640.00	-1,340.32	-13,391.81	13,394.58	0.00	0.00	0.00
18,100.00	90.00	269.88	5,640.00	-1,340.53	-13,491.81	13,494.58	0.00	0.00	0.00
18,200.00	90.00	269.88	5,640.00	-1,340.74	-13,591.80	13,594.58	0.00	0.00	0.00
18,300.00	90.00	269.88	5,640.00	-1,340.95	-13,691.80	13,694.58	0.00	0.00	0.00
18,400.00	90.00	269.88	5,640.00	-1,341.16	-13,791.80	13,794.58	0.00	0.00	0.00
18,500.00	90.00	269.88	5,640.00	-1,341.37	-13,891.80	13,894.58	0.00	0.00	0.00
18,600.00	90.00	269.88	5,640.00	-1,341.58	-13,991.80	13,994.58	0.00	0.00	0.00
18,700.00	90.00	269.88	5,640.00	-1,341.79	-14,091.80	14,094.58	0.00	0.00	0.00
18,800.00	90.00	269.88	5,640.00	-1,342.00	-14,191.80	14,194.58	0.00	0.00	0.00
18,900.00	90.00	269.88	5,640.00	-1,342.21	-14,291.80	14,294.58	0.00	0.00	0.00
19,000.00	90.00	269.88	5,640.00	-1,342.42	-14,391.80	14,394.58	0.00	0.00	0.00
19,100.00	90.00	269.88	5,640.00	-1,342.63	-14,491.80	14,494.58	0.00	0.00	0.00

Planning Report

Database:	EDM 5000.16 Single User Db	Local Co-ordinate Reference:	Well SPEED GOAT FED 3432-03H
Company:	VERDAD RESOURCES	TVD Reference:	RKB = 20' @ 4744.00usft (RIG)
Project:	WATTENBERG FIELD	MD Reference:	RKB = 20' @ 4744.00usft (RIG)
Site:	9N-58W-34 SPEED GOAT FED PAD	North Reference:	True
Well:	SPEED GOAT FED 3432-03H	Survey Calculation Method:	Minimum Curvature
Wellbore:	Plan C		
Design:	Permit Rev-1		

Planned Survey									
Measured Depth (usft)	Inclination (°)	Azimuth (°)	Vertical Depth (usft)	+N/-S (usft)	+E/-W (usft)	Vertical Section (usft)	Dogleg Rate (°/100usft)	Build Rate (°/100usft)	Turn Rate (°/100usft)
19,147.21	90.00	269.88	5,640.00	-1,342.73	-14,539.01	14,541.79	0.00	0.00	0.00
BPZ @ 19147.21ft									
19,200.00	90.00	269.88	5,640.00	-1,342.84	-14,591.80	14,594.58	0.00	0.00	0.00
19,237.30	90.00	269.88	5,640.00	-1,342.92	-14,629.11	14,631.89	0.00	0.00	0.00
TD Well @ 19237.30ft									

Casing Points				
Measured Depth (usft)	Vertical Depth (usft)	Name	Casing Diameter (")	Hole Diameter (")
1,489.41	1,474.00	9 5/8"	9-5/8	13-1/2

Plan Annotations				
Measured Depth (usft)	Vertical Depth (usft)	Local Coordinates		Comment
		+N/-S (usft)	+E/-W (usft)	
575.75	575.75	0.00	0.00	Begin Nudge @ 575.75ft
1,644.25	1,619.65	-146.28	-131.90	Hold Tangent @ 1644.25ft
5,403.45	5,120.39	-1,163.61	-1,049.19	KOP @ 5403.45ft :: DLS = 8°/100'
6,351.49	5,640.00	-1,315.79	-1,743.32	End Build @ 6351.49ft
12,868.37	5,640.00	-1,329.51	-8,260.19	Lease Entry @ 12868.37ft
14,193.29	5,640.00	-1,332.30	-9,585.10	Lease Exit @ 14193.29ft
19,147.21	5,640.00	-1,342.73	-14,539.01	BPZ @ 19147.21ft
19,237.30	5,640.00	-1,342.92	-14,629.11	TD Well @ 19237.30ft