

VERDAD RESOURCES

WATTENBERG FIELD

9N-58W-34 SPEED GOAT FED PAD

SPEED GOAT FED 3432-02H

Plan C

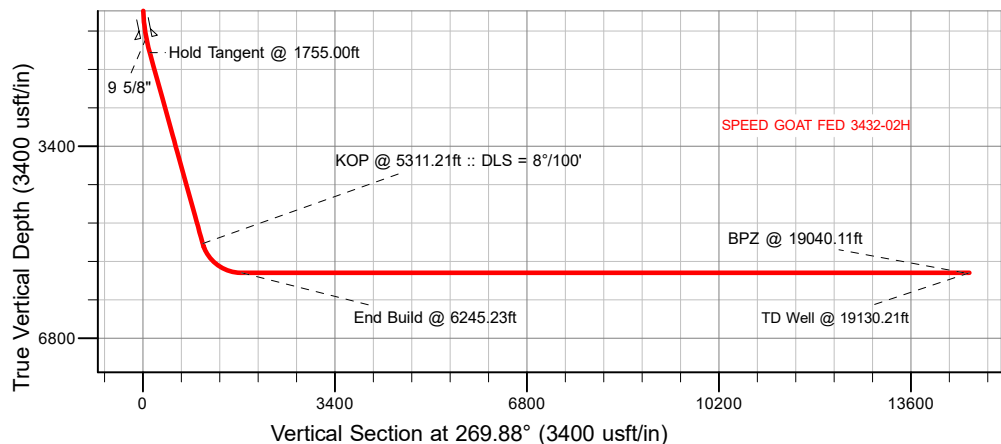
Plan: Permit Rev-1

Standard Planning Report

25 January, 2024

VERDAD RESOURCES

CASING DETAILS			
TVD	MD	Name	Size
1474.00	1479.04	9 5/8"	9-5/8



SECTION DETAILS										
Sec	MD	Inc	Azi	TVD	+N/-S	+E/-W	Dleg	TFace	VSect	Target
1	0.00	0.00	0.00	0.00	0.00	0.00	0.00	0.00	0.00	
2	850.00	0.00	0.00	850.00	0.00	0.00	0.00	0.00	0.00	
3	1755.00	18.10	237.89	1740.02	-75.35	-120.08	2.00	237.89	120.23	
4	5311.21	18.10	237.89	5120.26	-662.62	-1055.90	0.00	0.00	1057.29	
5	6245.23	90.00	269.88	5640.00	-754.10	-1746.59	8.00	33.31	1748.17	
6	19130.21	90.00	269.88	5640.00	-781.86	-14631.54	0.00	0.00	14633.14	SPEED GOAT FED 3432-02H_BHL

WELLBORE TARGET DETAILS (LAT/LONG)								
Name	MD		TVD		Northing	Easting	Latitude	Longitude
SPEED GOAT FED 3432-02H_SHL	0.00		0.00		1507351.33	3459105.77	40.714301	-103.843792
SPEED GOAT FED 3432-02H_KOP	5311.21		5120.26		1506669.10	3458062.43	40.712482	-103.845601
SPEED GOAT FED 3432-02H_LP	6245.23		5640.00		1506564.74	3457373.57	40.712231	-103.870092
SPEED GOAT FED 3432-02H_BPZ	19040.11		5640.00		1506299.07	3444581.45	40.712146	-103.896245
SPEED GOAT FED 3432-02H_BHL	19130.21		5640.00		1506296.35	3444491.39	40.712143	-103.896570

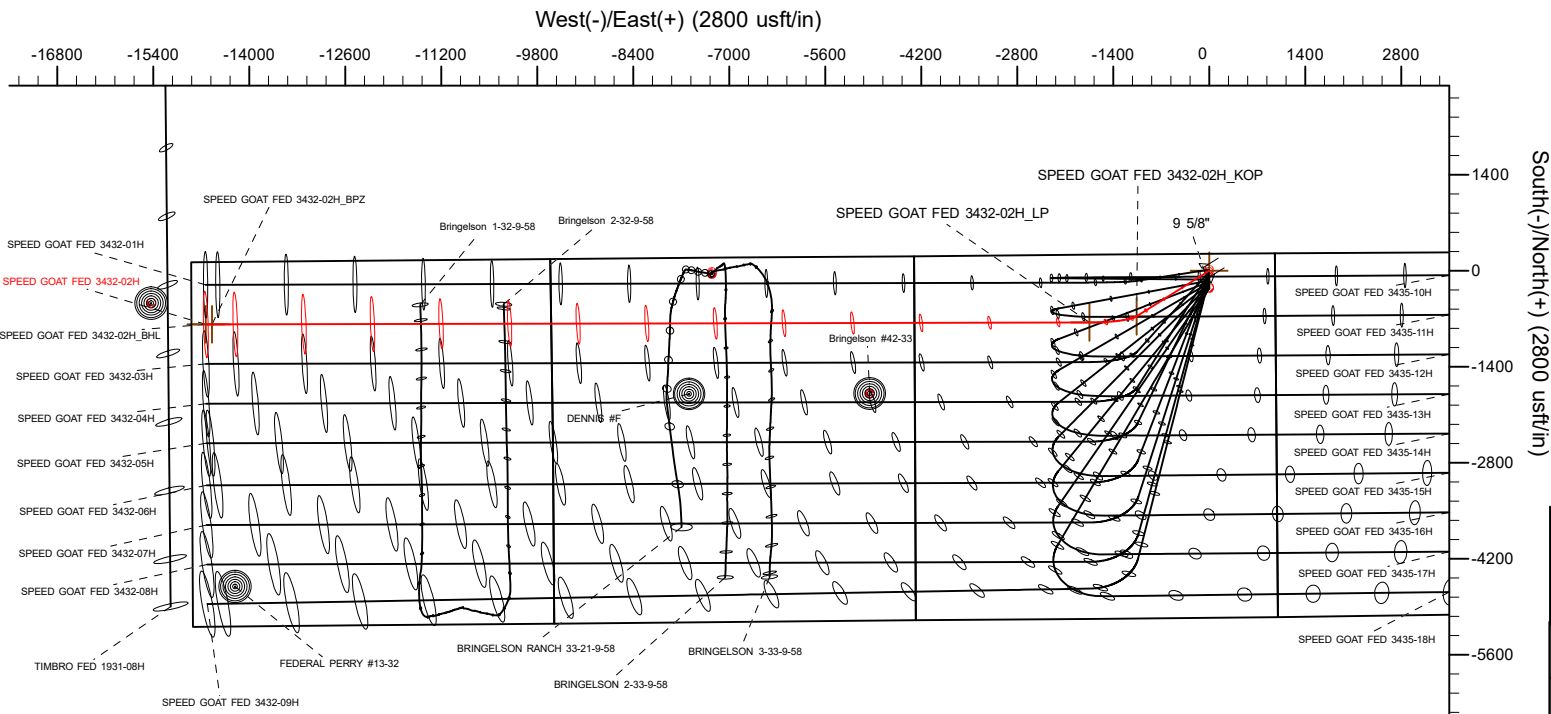
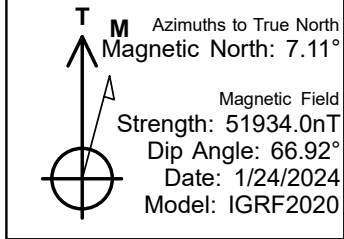
SHL
247' FNL
961' FEL

KOP
902' FNL
2022' FEL

LP
987' FNL
2550' FWL

BPZ
908' FNL
300' FWL

BHL
908' FNL
210' FWL



WELL DETAILS: SPEED GOAT FED 3432-02H	
GL = 4724'	
RKB = 20' @ 4744.00usft (RIG)	
Plan: Permit Rev-1 (SPEED GOAT FED 3432-02H/Plan C)	
Date:	1/25/2024

Planning Report

Database:	EDM 5000.16 Single User Db	Local Co-ordinate Reference:	Well SPEED GOAT FED 3432-02H
Company:	VERDAD RESOURCES	TVD Reference:	RKB = 20' @ 4744.00usft (RIG)
Project:	WATTENBERG FIELD	MD Reference:	RKB = 20' @ 4744.00usft (RIG)
Site:	9N-58W-34 SPEED GOAT FED PAD	North Reference:	True
Well:	SPEED GOAT FED 3432-02H	Survey Calculation Method:	Minimum Curvature
Wellbore:	Plan C		
Design:	Permit Rev-1		

Project	WATTENBERG FIELD		
Map System:	US State Plane 1983	System Datum:	Mean Sea Level
Geo Datum:	North American Datum 1983		
Map Zone:	Colorado Northern Zone		

Site		9N-58W-34 SPEED GOAT FED PAD				
Site Position:		Northing:	1,507,367.36	usft	Latitude:	40.714345
From:	Lat/Long	Easting:	3,459,105.19	usft	Longitude:	-103.843793
Position Uncertainty:		0.00	usft	Slot Radius:	13-3/16	"

Well	SPEED GOAT FED 3432-02H					
Well Position	+N/-S	0.00 usft	Northing:	1,507,351.33 usft	Latitude:	40.714301
	+E/-W	0.00 usft	Easting:	3,459,105.77 usft	Longitude:	-103.843792
Position Uncertainty		3.28 usft	Wellhead Elevation:	usft	Ground Level:	4,724.00 usft
Grid Convergence:		1.07 °				

Wellbore	Plan C				
Magnetics	Model Name	Sample Date	Declination (°)	Dip Angle (°)	Field Strength (nT)
	IGRF202013	1/24/2024	7.11	66.92	51,933.96778871

Design	Permit Rev-1				
Audit Notes:					
Version:		Phase:	PLAN	Tie On Depth:	0.00
Vertical Section:		Depth From (TVD) (usft)	+N/-S (usft)	+E/-W (usft)	Direction (°)
		0.00	0.00	0.00	269.88

Plan Survey Tool Program		Date	1/25/2024		
Depth From (usft)	Depth To (usft)	Survey (Wellbore)	Tool Name	Remarks	
1	0.00	1,474.00	Permit Rev-1 (Plan C)	ISCWSA MWD	
				Fixed:v2:standard declination	
2	1,474.00	19,130.21	Permit Rev-1 (Plan C)	ISCWSA MWD	
				Fixed:v2:standard declination	

Planning Report

Database:	EDM 5000.16 Single User Db	Local Co-ordinate Reference:	Well SPEED GOAT FED 3432-02H
Company:	VERDAD RESOURCES	TVD Reference:	RKB = 20' @ 4744.00usft (RIG)
Project:	WATTENBERG FIELD	MD Reference:	RKB = 20' @ 4744.00usft (RIG)
Site:	9N-58W-34 SPEED GOAT FED PAD	North Reference:	True
Well:	SPEED GOAT FED 3432-02H	Survey Calculation Method:	Minimum Curvature
Wellbore:	Plan C		
Design:	Permit Rev-1		

Plan Sections										
Measured Depth (usft)	Inclination (°)	Azimuth (°)	Vertical Depth (usft)	+N/-S (usft)	+E/-W (usft)	Dogleg Rate (°/100usft)	Build Rate (°/100usft)	Turn Rate (°/100usft)	TFO (°)	Target
0.00	0.00	0.00	0.00	0.00	0.00	0.00	0.00	0.00	0.00	
850.00	0.00	0.00	850.00	0.00	0.00	0.00	0.00	0.00	0.00	
1,755.00	18.10	237.89	1,740.02	-75.35	-120.08	2.00	2.00	0.00	237.89	
5,311.21	18.10	237.89	5,120.26	-662.62	-1,055.90	0.00	0.00	0.00	0.00	
6,245.23	90.00	269.88	5,640.00	-754.10	-1,746.59	8.00	7.70	3.42	33.31	
19,130.21	90.00	269.88	5,640.00	-781.86	-14,631.54	0.00	0.00	0.00	0.00	SPEED GOAT FED 3

Planning Report

Database:	EDM 5000.16 Single User Db	Local Co-ordinate Reference:	Well SPEED GOAT FED 3432-02H
Company:	VERDAD RESOURCES	TVD Reference:	RKB = 20' @ 4744.00usft (RIG)
Project:	WATTENBERG FIELD	MD Reference:	RKB = 20' @ 4744.00usft (RIG)
Site:	9N-58W-34 SPEED GOAT FED PAD	North Reference:	True
Well:	SPEED GOAT FED 3432-02H	Survey Calculation Method:	Minimum Curvature
Wellbore:	Plan C		
Design:	Permit Rev-1		

Planned Survey									
Measured Depth (usft)	Inclination (°)	Azimuth (°)	Vertical Depth (usft)	+N/-S (usft)	+E/-W (usft)	Vertical Section (usft)	Dogleg Rate (°/100usft)	Build Rate (°/100usft)	Turn Rate (°/100usft)
0.00	0.00	0.00	0.00	0.00	0.00	0.00	0.00	0.00	0.00
100.00	0.00	0.00	100.00	0.00	0.00	0.00	0.00	0.00	0.00
200.00	0.00	0.00	200.00	0.00	0.00	0.00	0.00	0.00	0.00
300.00	0.00	0.00	300.00	0.00	0.00	0.00	0.00	0.00	0.00
400.00	0.00	0.00	400.00	0.00	0.00	0.00	0.00	0.00	0.00
500.00	0.00	0.00	500.00	0.00	0.00	0.00	0.00	0.00	0.00
600.00	0.00	0.00	600.00	0.00	0.00	0.00	0.00	0.00	0.00
700.00	0.00	0.00	700.00	0.00	0.00	0.00	0.00	0.00	0.00
800.00	0.00	0.00	800.00	0.00	0.00	0.00	0.00	0.00	0.00
850.00	0.00	0.00	850.00	0.00	0.00	0.00	0.00	0.00	0.00
Begin Nudge @ 850.00ft									
900.00	1.00	237.89	900.00	-0.23	-0.37	0.37	2.00	2.00	0.00
1,000.00	3.00	237.89	999.93	-2.09	-3.33	3.33	2.00	2.00	0.00
1,100.00	5.00	237.89	1,099.68	-5.79	-9.23	9.25	2.00	2.00	0.00
1,200.00	7.00	237.89	1,199.13	-11.35	-18.09	18.11	2.00	2.00	0.00
1,300.00	9.00	237.89	1,298.15	-18.75	-29.87	29.91	2.00	2.00	0.00
1,400.00	11.00	237.89	1,396.63	-27.98	-44.58	44.64	2.00	2.00	0.00
1,479.04	12.58	237.89	1,474.00	-36.56	-58.26	58.34	2.00	2.00	0.00
9 5/8"									
1,500.00	13.00	237.89	1,494.44	-39.03	-62.19	62.27	2.00	2.00	0.00
1,600.00	15.00	237.89	1,591.46	-51.89	-82.68	82.79	2.00	2.00	0.00
1,700.00	17.00	237.89	1,687.58	-66.54	-106.03	106.17	2.00	2.00	0.00
1,755.00	18.10	237.89	1,740.02	-75.35	-120.08	120.23	2.00	2.00	0.00
Hold Tangent @ 1755.00ft									
1,800.00	18.10	237.89	1,782.80	-82.78	-131.92	132.09	0.00	0.00	0.00
1,900.00	18.10	237.89	1,877.85	-99.30	-158.23	158.44	0.00	0.00	0.00
2,000.00	18.10	237.89	1,972.90	-115.81	-184.55	184.79	0.00	0.00	0.00
2,100.00	18.10	237.89	2,067.95	-132.33	-210.86	211.14	0.00	0.00	0.00
2,200.00	18.10	237.89	2,163.00	-148.84	-237.18	237.49	0.00	0.00	0.00
2,300.00	18.10	237.89	2,258.05	-165.35	-263.49	263.84	0.00	0.00	0.00
2,400.00	18.10	237.89	2,353.11	-181.87	-289.81	290.19	0.00	0.00	0.00
2,500.00	18.10	237.89	2,448.16	-198.38	-316.12	316.54	0.00	0.00	0.00
2,600.00	18.10	237.89	2,543.21	-214.90	-342.44	342.89	0.00	0.00	0.00
2,700.00	18.10	237.89	2,638.26	-231.41	-368.76	369.24	0.00	0.00	0.00
2,800.00	18.10	237.89	2,733.31	-247.92	-395.07	395.59	0.00	0.00	0.00
2,900.00	18.10	237.89	2,828.36	-264.44	-421.39	421.94	0.00	0.00	0.00
3,000.00	18.10	237.89	2,923.41	-280.95	-447.70	448.29	0.00	0.00	0.00
3,100.00	18.10	237.89	3,018.47	-297.46	-474.02	474.64	0.00	0.00	0.00
3,200.00	18.10	237.89	3,113.52	-313.98	-500.33	500.99	0.00	0.00	0.00
3,300.00	18.10	237.89	3,208.57	-330.49	-526.65	527.34	0.00	0.00	0.00
3,400.00	18.10	237.89	3,303.62	-347.01	-552.96	553.69	0.00	0.00	0.00
3,500.00	18.10	237.89	3,398.67	-363.52	-579.28	580.04	0.00	0.00	0.00
3,600.00	18.10	237.89	3,493.72	-380.03	-605.59	606.39	0.00	0.00	0.00
3,700.00	18.10	237.89	3,588.78	-396.55	-631.91	632.74	0.00	0.00	0.00
3,800.00	18.10	237.89	3,683.83	-413.06	-658.22	659.09	0.00	0.00	0.00
3,900.00	18.10	237.89	3,778.88	-429.58	-684.54	685.44	0.00	0.00	0.00
4,000.00	18.10	237.89	3,873.93	-446.09	-710.85	711.79	0.00	0.00	0.00
4,100.00	18.10	237.89	3,968.98	-462.60	-737.17	738.14	0.00	0.00	0.00
4,200.00	18.10	237.89	4,064.03	-479.12	-763.48	764.48	0.00	0.00	0.00
4,300.00	18.10	237.89	4,159.09	-495.63	-789.80	790.83	0.00	0.00	0.00
4,400.00	18.10	237.89	4,254.14	-512.15	-816.11	817.18	0.00	0.00	0.00
4,500.00	18.10	237.89	4,349.19	-528.66	-842.43	843.53	0.00	0.00	0.00
4,600.00	18.10	237.89	4,444.24	-545.17	-868.74	869.88	0.00	0.00	0.00

Planning Report

Database:	EDM 5000.16 Single User Db	Local Co-ordinate Reference:	Well SPEED GOAT FED 3432-02H
Company:	VERDAD RESOURCES	TVD Reference:	RKB = 20' @ 4744.00usft (RIG)
Project:	WATTENBERG FIELD	MD Reference:	RKB = 20' @ 4744.00usft (RIG)
Site:	9N-58W-34 SPEED GOAT FED PAD	North Reference:	True
Well:	SPEED GOAT FED 3432-02H	Survey Calculation Method:	Minimum Curvature
Wellbore:	Plan C		
Design:	Permit Rev-1		

Planned Survey									
Measured Depth (usft)	Inclination (°)	Azimuth (°)	Vertical Depth (usft)	+N/-S (usft)	+E/-W (usft)	Vertical Section (usft)	Dogleg Rate (°/100usft)	Build Rate (°/100usft)	Turn Rate (°/100usft)
4,700.00	18.10	237.89	4,539.29	-561.69	-895.06	896.23	0.00	0.00	0.00
4,800.00	18.10	237.89	4,634.34	-578.20	-921.37	922.58	0.00	0.00	0.00
4,900.00	18.10	237.89	4,729.39	-594.72	-947.69	948.93	0.00	0.00	0.00
5,000.00	18.10	237.89	4,824.45	-611.23	-974.00	975.28	0.00	0.00	0.00
5,100.00	18.10	237.89	4,919.50	-627.74	-1,000.32	1,001.63	0.00	0.00	0.00
5,200.00	18.10	237.89	5,014.55	-644.26	-1,026.64	1,027.98	0.00	0.00	0.00
5,300.00	18.10	237.89	5,109.60	-660.77	-1,052.95	1,054.33	0.00	0.00	0.00
5,311.21	18.10	237.89	5,120.26	-662.62	-1,055.90	1,057.29	0.00	0.00	0.00
KOP @ 5311.21ft :: DLS = 8°/100'									
5,350.00	20.76	242.70	5,156.84	-668.98	-1,067.12	1,068.51	8.00	6.86	12.40
5,400.00	24.34	247.37	5,203.01	-677.01	-1,084.51	1,085.92	8.00	7.16	9.34
5,450.00	28.03	250.90	5,247.87	-684.82	-1,105.13	1,106.56	8.00	7.37	7.05
5,500.00	31.79	253.65	5,291.21	-692.38	-1,128.87	1,130.32	8.00	7.52	5.51
5,550.00	35.59	255.88	5,332.81	-699.64	-1,155.63	1,157.09	8.00	7.61	4.45
5,600.00	39.43	257.72	5,372.46	-706.57	-1,185.27	1,186.75	8.00	7.68	3.69
5,650.00	43.29	259.29	5,409.98	-713.13	-1,217.64	1,219.13	8.00	7.73	3.13
5,700.00	47.18	260.64	5,445.19	-719.30	-1,252.59	1,254.10	8.00	7.77	2.71
5,750.00	51.07	261.84	5,477.90	-725.05	-1,289.95	1,291.47	8.00	7.79	2.39
5,800.00	54.98	262.91	5,507.97	-730.34	-1,329.54	1,331.06	8.00	7.82	2.14
5,850.00	58.90	263.88	5,535.24	-735.15	-1,371.16	1,372.69	8.00	7.83	1.94
5,900.00	62.82	264.78	5,559.59	-739.46	-1,414.60	1,416.15	8.00	7.85	1.79
5,950.00	66.75	265.61	5,580.88	-743.24	-1,459.67	1,461.22	8.00	7.86	1.67
6,000.00	70.68	266.40	5,599.03	-746.49	-1,506.14	1,507.70	8.00	7.86	1.57
6,050.00	74.62	267.15	5,613.94	-749.17	-1,553.78	1,555.34	8.00	7.87	1.50
6,100.00	78.55	267.87	5,625.54	-751.28	-1,602.36	1,603.93	8.00	7.88	1.44
6,150.00	82.49	268.57	5,633.77	-752.81	-1,651.64	1,653.21	8.00	7.88	1.40
6,200.00	86.43	269.26	5,638.59	-753.76	-1,701.39	1,702.96	8.00	7.88	1.38
6,245.23	90.00	269.88	5,640.00	-754.10	-1,746.59	1,748.17	8.00	7.88	1.37
End Build @ 6245.23ft									
6,300.00	90.00	269.88	5,640.00	-754.22	-1,801.36	1,802.93	0.00	0.00	0.00
6,400.00	90.00	269.88	5,640.00	-754.43	-1,901.36	1,902.93	0.00	0.00	0.00
6,500.00	90.00	269.88	5,640.00	-754.65	-2,001.36	2,002.93	0.00	0.00	0.00
6,600.00	90.00	269.88	5,640.00	-754.86	-2,101.36	2,102.93	0.00	0.00	0.00
6,700.00	90.00	269.88	5,640.00	-755.08	-2,201.36	2,202.93	0.00	0.00	0.00
6,800.00	90.00	269.88	5,640.00	-755.29	-2,301.36	2,302.93	0.00	0.00	0.00
6,900.00	90.00	269.88	5,640.00	-755.51	-2,401.36	2,402.93	0.00	0.00	0.00
7,000.00	90.00	269.88	5,640.00	-755.72	-2,501.36	2,502.93	0.00	0.00	0.00
7,100.00	90.00	269.88	5,640.00	-755.94	-2,601.36	2,602.93	0.00	0.00	0.00
7,200.00	90.00	269.88	5,640.00	-756.15	-2,701.36	2,702.93	0.00	0.00	0.00
7,300.00	90.00	269.88	5,640.00	-756.37	-2,801.36	2,802.93	0.00	0.00	0.00
7,400.00	90.00	269.88	5,640.00	-756.59	-2,901.36	2,902.93	0.00	0.00	0.00
7,500.00	90.00	269.88	5,640.00	-756.80	-3,001.36	3,002.93	0.00	0.00	0.00
7,600.00	90.00	269.88	5,640.00	-757.02	-3,101.36	3,102.93	0.00	0.00	0.00
7,700.00	90.00	269.88	5,640.00	-757.23	-3,201.35	3,202.93	0.00	0.00	0.00
7,800.00	90.00	269.88	5,640.00	-757.45	-3,301.35	3,302.93	0.00	0.00	0.00
7,900.00	90.00	269.88	5,640.00	-757.66	-3,401.35	3,402.93	0.00	0.00	0.00
8,000.00	90.00	269.88	5,640.00	-757.88	-3,501.35	3,502.93	0.00	0.00	0.00
8,100.00	90.00	269.88	5,640.00	-758.09	-3,601.35	3,602.93	0.00	0.00	0.00
8,200.00	90.00	269.88	5,640.00	-758.31	-3,701.35	3,702.93	0.00	0.00	0.00
8,300.00	90.00	269.88	5,640.00	-758.52	-3,801.35	3,802.93	0.00	0.00	0.00
8,400.00	90.00	269.88	5,640.00	-758.74	-3,901.35	3,902.93	0.00	0.00	0.00
8,500.00	90.00	269.88	5,640.00	-758.96	-4,001.35	4,002.93	0.00	0.00	0.00
8,600.00	90.00	269.88	5,640.00	-759.17	-4,101.35	4,102.93	0.00	0.00	0.00
8,700.00	90.00	269.88	5,640.00	-759.39	-4,201.35	4,202.93	0.00	0.00	0.00

Planning Report

Database:	EDM 5000.16 Single User Db	Local Co-ordinate Reference:	Well SPEED GOAT FED 3432-02H
Company:	VERDAD RESOURCES	TVD Reference:	RKB = 20' @ 4744.00usft (RIG)
Project:	WATTENBERG FIELD	MD Reference:	RKB = 20' @ 4744.00usft (RIG)
Site:	9N-58W-34 SPEED GOAT FED PAD	North Reference:	True
Well:	SPEED GOAT FED 3432-02H	Survey Calculation Method:	Minimum Curvature
Wellbore:	Plan C		
Design:	Permit Rev-1		

Planned Survey										
Measured Depth (usft)	Inclination (°)	Azimuth (°)	Vertical Depth (usft)	+N/-S (usft)	+E/-W (usft)	Vertical Section (usft)	Dogleg Rate (°/100usft)	Build Rate (°/100usft)	Turn Rate (°/100usft)	
8,800.00	90.00	269.88	5,640.00	-759.60	-4,301.35	4,302.93	0.00	0.00	0.00	
8,900.00	90.00	269.88	5,640.00	-759.82	-4,401.35	4,402.93	0.00	0.00	0.00	
9,000.00	90.00	269.88	5,640.00	-760.03	-4,501.35	4,502.93	0.00	0.00	0.00	
9,100.00	90.00	269.88	5,640.00	-760.25	-4,601.35	4,602.93	0.00	0.00	0.00	
9,200.00	90.00	269.88	5,640.00	-760.46	-4,701.35	4,702.93	0.00	0.00	0.00	
9,300.00	90.00	269.88	5,640.00	-760.68	-4,801.35	4,802.93	0.00	0.00	0.00	
9,400.00	90.00	269.88	5,640.00	-760.89	-4,901.35	4,902.93	0.00	0.00	0.00	
9,500.00	90.00	269.88	5,640.00	-761.11	-5,001.35	5,002.93	0.00	0.00	0.00	
9,600.00	90.00	269.88	5,640.00	-761.32	-5,101.35	5,102.93	0.00	0.00	0.00	
9,700.00	90.00	269.88	5,640.00	-761.54	-5,201.35	5,202.93	0.00	0.00	0.00	
9,800.00	90.00	269.88	5,640.00	-761.76	-5,301.35	5,302.93	0.00	0.00	0.00	
9,900.00	90.00	269.88	5,640.00	-761.97	-5,401.35	5,402.93	0.00	0.00	0.00	
10,000.00	90.00	269.88	5,640.00	-762.19	-5,501.35	5,502.93	0.00	0.00	0.00	
10,100.00	90.00	269.88	5,640.00	-762.40	-5,601.35	5,602.93	0.00	0.00	0.00	
10,200.00	90.00	269.88	5,640.00	-762.62	-5,701.35	5,702.93	0.00	0.00	0.00	
10,300.00	90.00	269.88	5,640.00	-762.83	-5,801.35	5,802.93	0.00	0.00	0.00	
10,400.00	90.00	269.88	5,640.00	-763.05	-5,901.35	5,902.93	0.00	0.00	0.00	
10,500.00	90.00	269.88	5,640.00	-763.26	-6,001.35	6,002.93	0.00	0.00	0.00	
10,600.00	90.00	269.88	5,640.00	-763.48	-6,101.35	6,102.93	0.00	0.00	0.00	
10,700.00	90.00	269.88	5,640.00	-763.69	-6,201.35	6,202.93	0.00	0.00	0.00	
10,800.00	90.00	269.88	5,640.00	-763.91	-6,301.35	6,302.93	0.00	0.00	0.00	
10,900.00	90.00	269.88	5,640.00	-764.13	-6,401.35	6,402.93	0.00	0.00	0.00	
11,000.00	90.00	269.88	5,640.00	-764.34	-6,501.35	6,502.93	0.00	0.00	0.00	
11,100.00	90.00	269.88	5,640.00	-764.56	-6,601.35	6,602.93	0.00	0.00	0.00	
11,200.00	90.00	269.88	5,640.00	-764.77	-6,701.35	6,702.93	0.00	0.00	0.00	
11,300.00	90.00	269.88	5,640.00	-764.99	-6,801.35	6,802.93	0.00	0.00	0.00	
11,400.00	90.00	269.88	5,640.00	-765.20	-6,901.35	6,902.93	0.00	0.00	0.00	
11,500.00	90.00	269.88	5,640.00	-765.42	-7,001.35	7,002.93	0.00	0.00	0.00	
11,600.00	90.00	269.88	5,640.00	-765.63	-7,101.35	7,102.93	0.00	0.00	0.00	
11,700.00	90.00	269.88	5,640.00	-765.85	-7,201.35	7,202.93	0.00	0.00	0.00	
11,800.00	90.00	269.88	5,640.00	-766.06	-7,301.35	7,302.93	0.00	0.00	0.00	
11,900.00	90.00	269.88	5,640.00	-766.28	-7,401.35	7,402.93	0.00	0.00	0.00	
12,000.00	90.00	269.88	5,640.00	-766.50	-7,501.34	7,502.93	0.00	0.00	0.00	
12,100.00	90.00	269.88	5,640.00	-766.71	-7,601.34	7,602.93	0.00	0.00	0.00	
12,200.00	90.00	269.88	5,640.00	-766.93	-7,701.34	7,702.93	0.00	0.00	0.00	
12,300.00	90.00	269.88	5,640.00	-767.14	-7,801.34	7,802.93	0.00	0.00	0.00	
12,400.00	90.00	269.88	5,640.00	-767.36	-7,901.34	7,902.93	0.00	0.00	0.00	
12,500.00	90.00	269.88	5,640.00	-767.57	-8,001.34	8,002.93	0.00	0.00	0.00	
12,600.00	90.00	269.88	5,640.00	-767.79	-8,101.34	8,102.93	0.00	0.00	0.00	
12,700.00	90.00	269.88	5,640.00	-768.00	-8,201.34	8,202.93	0.00	0.00	0.00	
12,800.00	90.00	269.88	5,640.00	-768.22	-8,301.34	8,302.93	0.00	0.00	0.00	
12,900.00	90.00	269.88	5,640.00	-768.43	-8,401.34	8,402.93	0.00	0.00	0.00	
13,000.00	90.00	269.88	5,640.00	-768.65	-8,501.34	8,502.93	0.00	0.00	0.00	
13,100.00	90.00	269.88	5,640.00	-768.87	-8,601.34	8,602.93	0.00	0.00	0.00	
13,200.00	90.00	269.88	5,640.00	-769.08	-8,701.34	8,702.93	0.00	0.00	0.00	
13,300.00	90.00	269.88	5,640.00	-769.30	-8,801.34	8,802.93	0.00	0.00	0.00	
13,400.00	90.00	269.88	5,640.00	-769.51	-8,901.34	8,902.93	0.00	0.00	0.00	
13,500.00	90.00	269.88	5,640.00	-769.73	-9,001.34	9,002.93	0.00	0.00	0.00	
13,600.00	90.00	269.88	5,640.00	-769.94	-9,101.34	9,102.93	0.00	0.00	0.00	
13,700.00	90.00	269.88	5,640.00	-770.16	-9,201.34	9,202.93	0.00	0.00	0.00	
13,800.00	90.00	269.88	5,640.00	-770.37	-9,301.34	9,302.93	0.00	0.00	0.00	
13,900.00	90.00	269.88	5,640.00	-770.59	-9,401.34	9,402.93	0.00	0.00	0.00	
14,000.00	90.00	269.88	5,640.00	-770.80	-9,501.34	9,502.93	0.00	0.00	0.00	
14,100.00	90.00	269.88	5,640.00	-771.02	-9,601.34	9,602.93	0.00	0.00	0.00	

Planning Report

Database:	EDM 5000.16 Single User Db	Local Co-ordinate Reference:	Well SPEED GOAT FED 3432-02H
Company:	VERDAD RESOURCES	TVD Reference:	RKB = 20' @ 4744.00usft (RIG)
Project:	WATTENBERG FIELD	MD Reference:	RKB = 20' @ 4744.00usft (RIG)
Site:	9N-58W-34 SPEED GOAT FED PAD	North Reference:	True
Well:	SPEED GOAT FED 3432-02H	Survey Calculation Method:	Minimum Curvature
Wellbore:	Plan C		
Design:	Permit Rev-1		

Planned Survey									
Measured Depth (usft)	Inclination (°)	Azimuth (°)	Vertical Depth (usft)	+N/-S (usft)	+E/-W (usft)	Vertical Section (usft)	Dogleg Rate (°/100usft)	Build Rate (°/100usft)	Turn Rate (°/100usft)
14,200.00	90.00	269.88	5,640.00	-771.23	-9,701.34	9,702.93	0.00	0.00	0.00
14,300.00	90.00	269.88	5,640.00	-771.45	-9,801.34	9,802.93	0.00	0.00	0.00
14,400.00	90.00	269.88	5,640.00	-771.67	-9,901.34	9,902.93	0.00	0.00	0.00
14,500.00	90.00	269.88	5,640.00	-771.88	-10,001.34	10,002.93	0.00	0.00	0.00
14,600.00	90.00	269.88	5,640.00	-772.10	-10,101.34	10,102.93	0.00	0.00	0.00
14,700.00	90.00	269.88	5,640.00	-772.31	-10,201.34	10,202.93	0.00	0.00	0.00
14,800.00	90.00	269.88	5,640.00	-772.53	-10,301.34	10,302.93	0.00	0.00	0.00
14,900.00	90.00	269.88	5,640.00	-772.74	-10,401.34	10,402.93	0.00	0.00	0.00
15,000.00	90.00	269.88	5,640.00	-772.96	-10,501.34	10,502.93	0.00	0.00	0.00
15,100.00	90.00	269.88	5,640.00	-773.17	-10,601.34	10,602.93	0.00	0.00	0.00
15,200.00	90.00	269.88	5,640.00	-773.39	-10,701.34	10,702.93	0.00	0.00	0.00
15,300.00	90.00	269.88	5,640.00	-773.60	-10,801.34	10,802.93	0.00	0.00	0.00
15,400.00	90.00	269.88	5,640.00	-773.82	-10,901.34	10,902.93	0.00	0.00	0.00
15,500.00	90.00	269.88	5,640.00	-774.04	-11,001.34	11,002.93	0.00	0.00	0.00
15,600.00	90.00	269.88	5,640.00	-774.25	-11,101.34	11,102.93	0.00	0.00	0.00
15,700.00	90.00	269.88	5,640.00	-774.47	-11,201.34	11,202.93	0.00	0.00	0.00
15,800.00	90.00	269.88	5,640.00	-774.68	-11,301.34	11,302.93	0.00	0.00	0.00
15,900.00	90.00	269.88	5,640.00	-774.90	-11,401.34	11,402.93	0.00	0.00	0.00
16,000.00	90.00	269.88	5,640.00	-775.11	-11,501.34	11,502.93	0.00	0.00	0.00
16,100.00	90.00	269.88	5,640.00	-775.33	-11,601.34	11,602.93	0.00	0.00	0.00
16,200.00	90.00	269.88	5,640.00	-775.54	-11,701.34	11,702.93	0.00	0.00	0.00
16,300.00	90.00	269.88	5,640.00	-775.76	-11,801.34	11,802.93	0.00	0.00	0.00
16,400.00	90.00	269.88	5,640.00	-775.97	-11,901.33	11,902.93	0.00	0.00	0.00
16,500.00	90.00	269.88	5,640.00	-776.19	-12,001.33	12,002.93	0.00	0.00	0.00
16,600.00	90.00	269.88	5,640.00	-776.41	-12,101.33	12,102.93	0.00	0.00	0.00
16,700.00	90.00	269.88	5,640.00	-776.62	-12,201.33	12,202.93	0.00	0.00	0.00
16,800.00	90.00	269.88	5,640.00	-776.84	-12,301.33	12,302.93	0.00	0.00	0.00
16,900.00	90.00	269.88	5,640.00	-777.05	-12,401.33	12,402.93	0.00	0.00	0.00
17,000.00	90.00	269.88	5,640.00	-777.27	-12,501.33	12,502.93	0.00	0.00	0.00
17,100.00	90.00	269.88	5,640.00	-777.48	-12,601.33	12,602.93	0.00	0.00	0.00
17,200.00	90.00	269.88	5,640.00	-777.70	-12,701.33	12,702.93	0.00	0.00	0.00
17,300.00	90.00	269.88	5,640.00	-777.91	-12,801.33	12,802.93	0.00	0.00	0.00
17,400.00	90.00	269.88	5,640.00	-778.13	-12,901.33	12,902.93	0.00	0.00	0.00
17,500.00	90.00	269.88	5,640.00	-778.34	-13,001.33	13,002.93	0.00	0.00	0.00
17,600.00	90.00	269.88	5,640.00	-778.56	-13,101.33	13,102.93	0.00	0.00	0.00
17,700.00	90.00	269.88	5,640.00	-778.78	-13,201.33	13,202.93	0.00	0.00	0.00
17,800.00	90.00	269.88	5,640.00	-778.99	-13,301.33	13,302.93	0.00	0.00	0.00
17,900.00	90.00	269.88	5,640.00	-779.21	-13,401.33	13,402.93	0.00	0.00	0.00
18,000.00	90.00	269.88	5,640.00	-779.42	-13,501.33	13,502.93	0.00	0.00	0.00
18,100.00	90.00	269.88	5,640.00	-779.64	-13,601.33	13,602.93	0.00	0.00	0.00
18,200.00	90.00	269.88	5,640.00	-779.85	-13,701.33	13,702.93	0.00	0.00	0.00
18,300.00	90.00	269.88	5,640.00	-780.07	-13,801.33	13,802.93	0.00	0.00	0.00
18,400.00	90.00	269.88	5,640.00	-780.28	-13,901.33	13,902.93	0.00	0.00	0.00
18,500.00	90.00	269.88	5,640.00	-780.50	-14,001.33	14,002.93	0.00	0.00	0.00
18,600.00	90.00	269.88	5,640.00	-780.71	-14,101.33	14,102.93	0.00	0.00	0.00
18,700.00	90.00	269.88	5,640.00	-780.93	-14,201.33	14,202.93	0.00	0.00	0.00
18,800.00	90.00	269.88	5,640.00	-781.14	-14,301.33	14,302.93	0.00	0.00	0.00
18,900.00	90.00	269.88	5,640.00	-781.36	-14,401.33	14,402.93	0.00	0.00	0.00
19,000.00	90.00	269.88	5,640.00	-781.58	-14,501.33	14,502.93	0.00	0.00	0.00
19,040.11	90.00	269.88	5,640.00	-781.66	-14,541.44	14,543.04	0.00	0.00	0.00
BPZ @ 19040.11ft									
19,100.00	90.00	269.88	5,640.00	-781.79	-14,601.33	14,602.93	0.00	0.00	0.00
19,130.21	90.00	269.88	5,640.00	-781.86	-14,631.54	14,633.14	0.00	0.00	0.00
TD Well @ 19130.21ft									

Planning Report

Database:	EDM 5000.16 Single User Db	Local Co-ordinate Reference:	Well SPEED GOAT FED 3432-02H
Company:	VERDAD RESOURCES	TVD Reference:	RKB = 20' @ 4744.00usft (RIG)
Project:	WATTENBERG FIELD	MD Reference:	RKB = 20' @ 4744.00usft (RIG)
Site:	9N-58W-34 SPEED GOAT FED PAD	North Reference:	True
Well:	SPEED GOAT FED 3432-02H	Survey Calculation Method:	Minimum Curvature
Wellbore:	Plan C		
Design:	Permit Rev-1		

Planned Survey									
Measured Depth (usft)	Inclination (°)	Azimuth (°)	Vertical Depth (usft)	+N/-S (usft)	+E/-W (usft)	Vertical Section (usft)	Dogleg Rate (°/100usft)	Build Rate (°/100usft)	Turn Rate (°/100usft)

Casing Points									
Measured Depth (usft)	Vertical Depth (usft)	Name			Casing Diameter (")	Hole Diameter (")			
1,479.04	1,474.00	9 5/8"			9-5/8	13-1/2			

Plan Annotations									
Measured Depth (usft)	Vertical Depth (usft)	Local Coordinates							
		+N/-S (usft)	+E/-W (usft)		Comment				
850.00	850.00	0.00	0.00		Begin Nudge @ 850.00ft				
1,755.00	1,740.02	-75.35	-120.08		Hold Tangent @ 1755.00ft				
5,311.21	5,120.26	-662.62	-1,055.90		KOP @ 5311.21ft :: DLS = 8°/100'				
6,245.23	5,640.00	-754.10	-1,746.59		End Build @ 6245.23ft				
19,040.11	5,640.00	-781.66	-14,541.44		BPZ @ 19040.11ft				
19,130.21	5,640.00	-781.86	-14,631.54		TD Well @ 19130.21ft				