



RADIAL BOND TOOL
GAMMA RAY
CCL

Company CIVITAS RESOURCES Well MCCOY 2-4-5 Field WATTENBERG County WELD State CO	Country USA	Company CIVITAS RESOURCES					
		Well MCCOY 2-4-5					
		Field WATTENBERG					
		County WELD					
		State CO					
Location:		API # : 05-123-24365		Other Services			
		NWSW					
		LAT. 40.16637 LONG. -104.920913					
		SEC 5 TWP 2N RGE 67W					
Permanent Datum		GL		Elevation 4849'			
Log Measured From		KB 15'		K.B.			
Drilling Measured From		KB		D.F.			
				G.L.			
Date		1-5-2024					
Run Number		ONE					
Depth Driller		7980'					
Depth Logger		3504'					
Bottom Logged Interval		3500'					
Top Log Interval		SURFACE					
Open Hole Size		8.625"					
Type Fluid		WATER					
Density / Viscosity		NA					
Max. Recorded Temp.		NA					
Estimated Cement Top							
Time Well Ready		ON ARRIVAL					
Time Logger on Bottom		NA					
Equipment Number		3813					
Location		GREELEY, CO					
Recorded By		J. KERR					
Witnessed By		B. CHAVEZ					
Borehole Record				Tubing Record			
Run Number	Bit	From	To	Size	Weight	From	To
Casing Record		Size		Wgt/Ft		Top	
Surface String		8.625"		24#		SURFACE	
Prot. String							
Production String		4.5"		11.6#		SURFACE	
Liner						7980'	

<<< Fold Here >>>

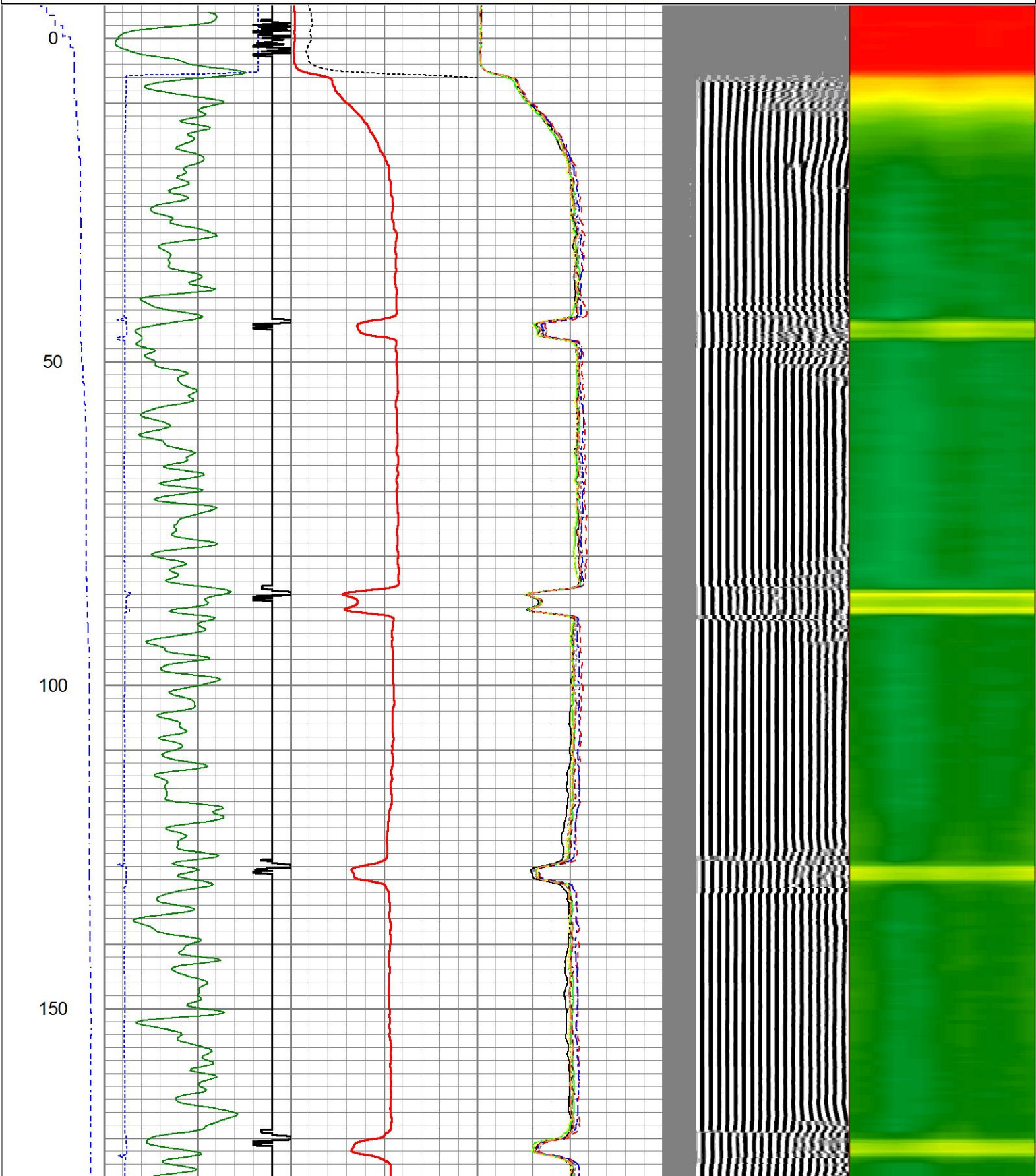
All interpretations are opinions based on inferences from electrical or other measurements and we cannot and do not guarantee the accuracy or correctness of any interpretation, and we shall not, except in the case of gross or willful negligence on our part, be liable or responsible for any loss, costs, damages, or expenses incurred or sustained by anyone resulting from any interpretation made by any of our officers, agents or employees. These interpretations are also subject to our general terms and conditions set out in our current Price Schedule.

Comments

RAN CBL TO VERIFY CEMENT BOND
WELL LOADED UPON ARRIVAL

Database File mccoys 2-4-5.db
Dataset Pathname pass6
Presentation Format ips_rbtvcivitas
Dataset Creation Fri Jan 05 10:28:17 2024
Charted by Depth in Feet scaled 1:240

LSPD	200	TT (usec)	1000	0	AMP (mV)	100	0	AMPS1	100	200	VDL (usec)	1200	1	Cement Map	8
(ft/min)	-9	CCL	1	0	AMPx5 (mV)	20	0	AMPS2	100						
0	250	0	GR (GAPI)	150			0	AMPS3	100						
		150	GR (GAPI)	400			0	AMPS4	100						
							0	AMPS5	100						
							0	AMPS6	100						
							0	AMPS7	100						
							0	AMPS8	100						

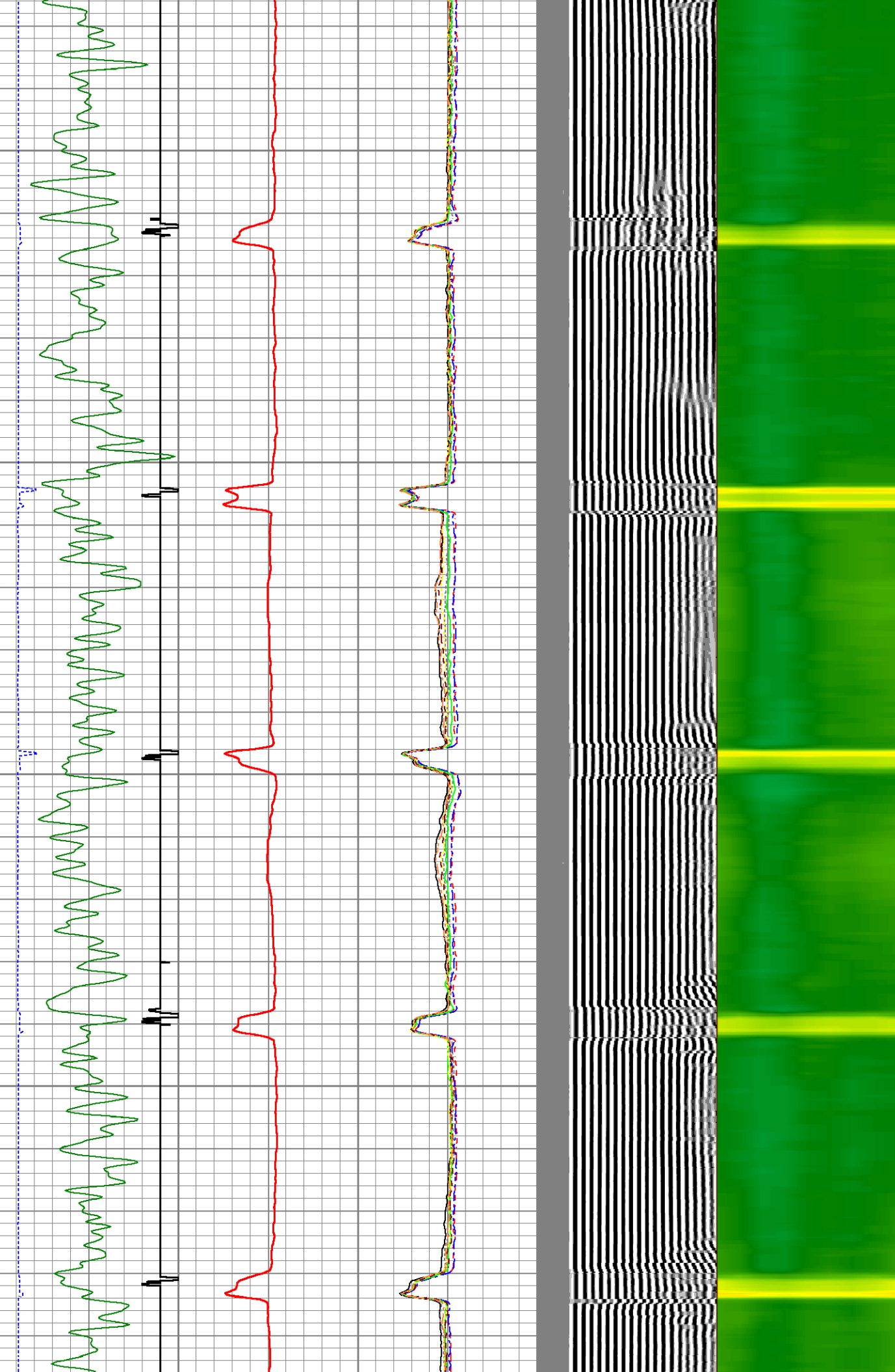


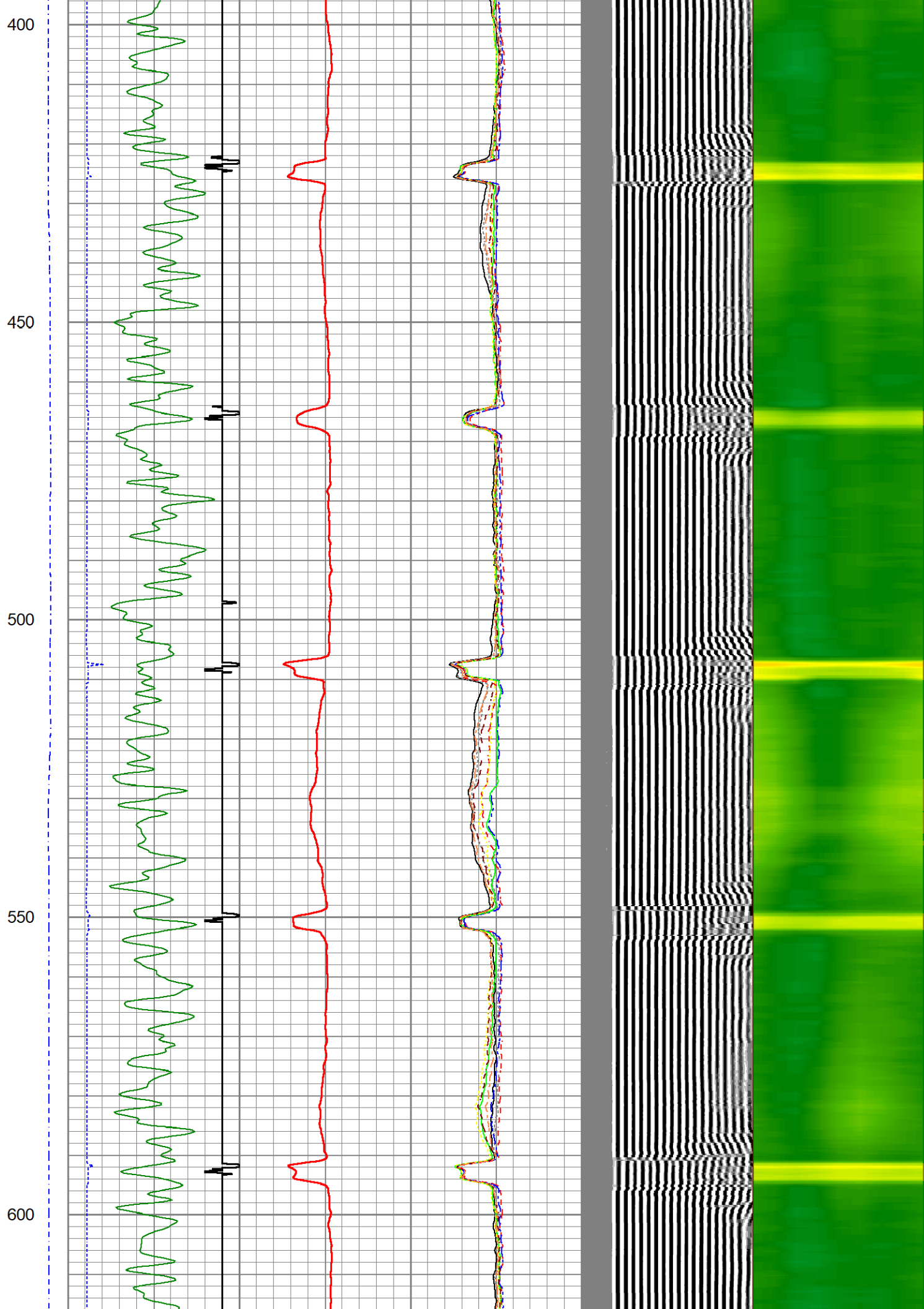
200

250

300

350



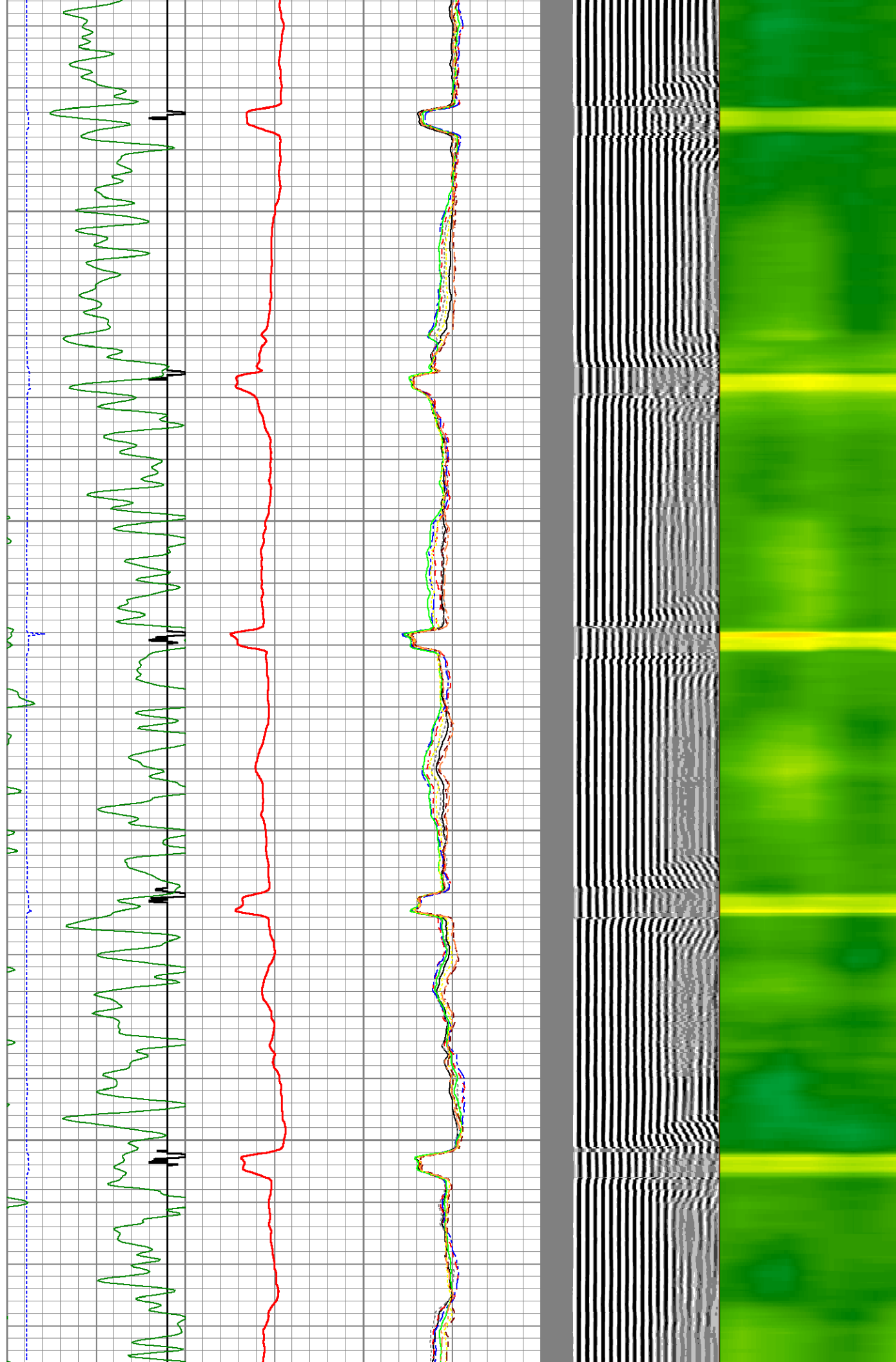


650

700

750

800



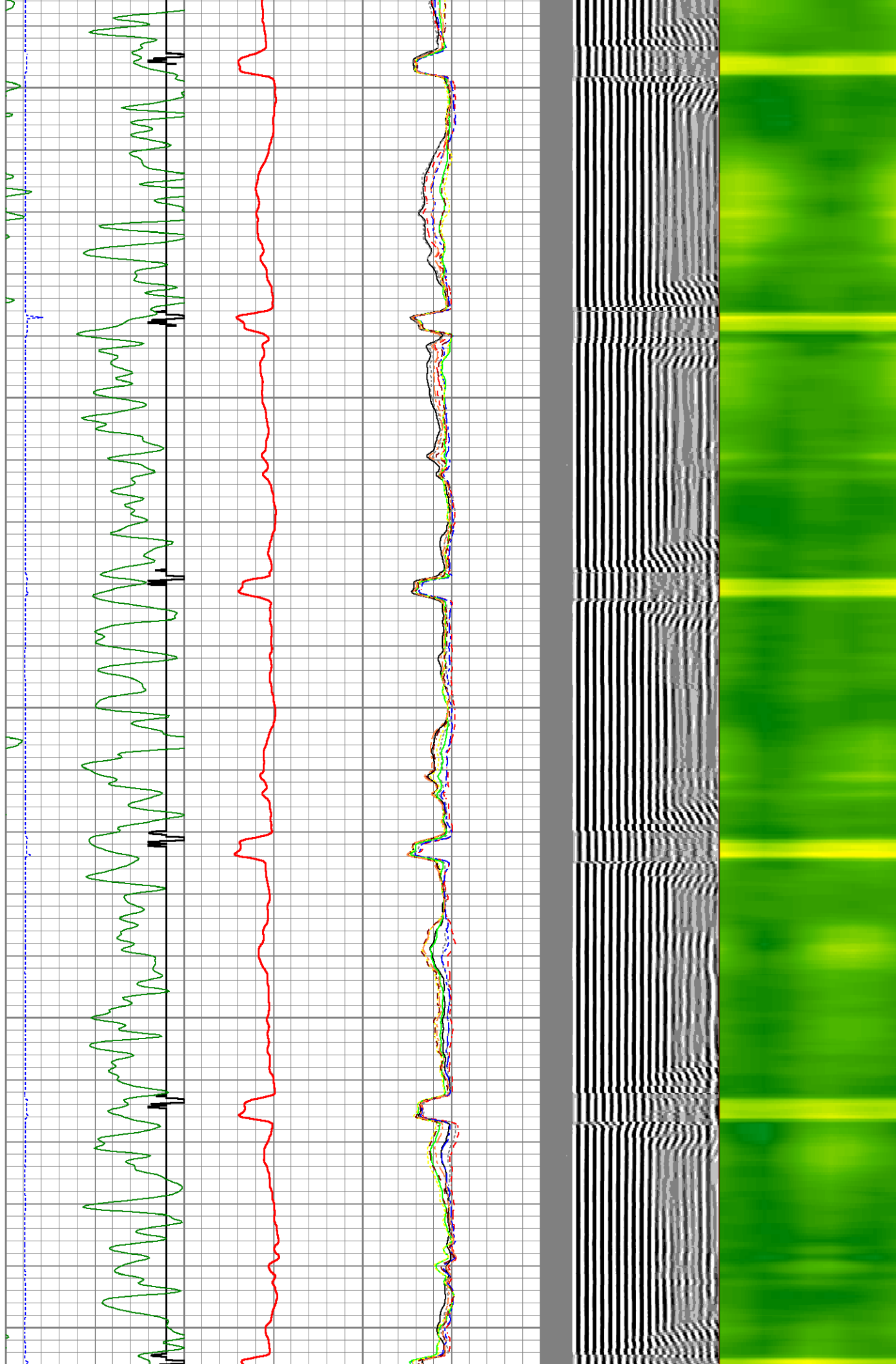
850

900

950

1000

1050

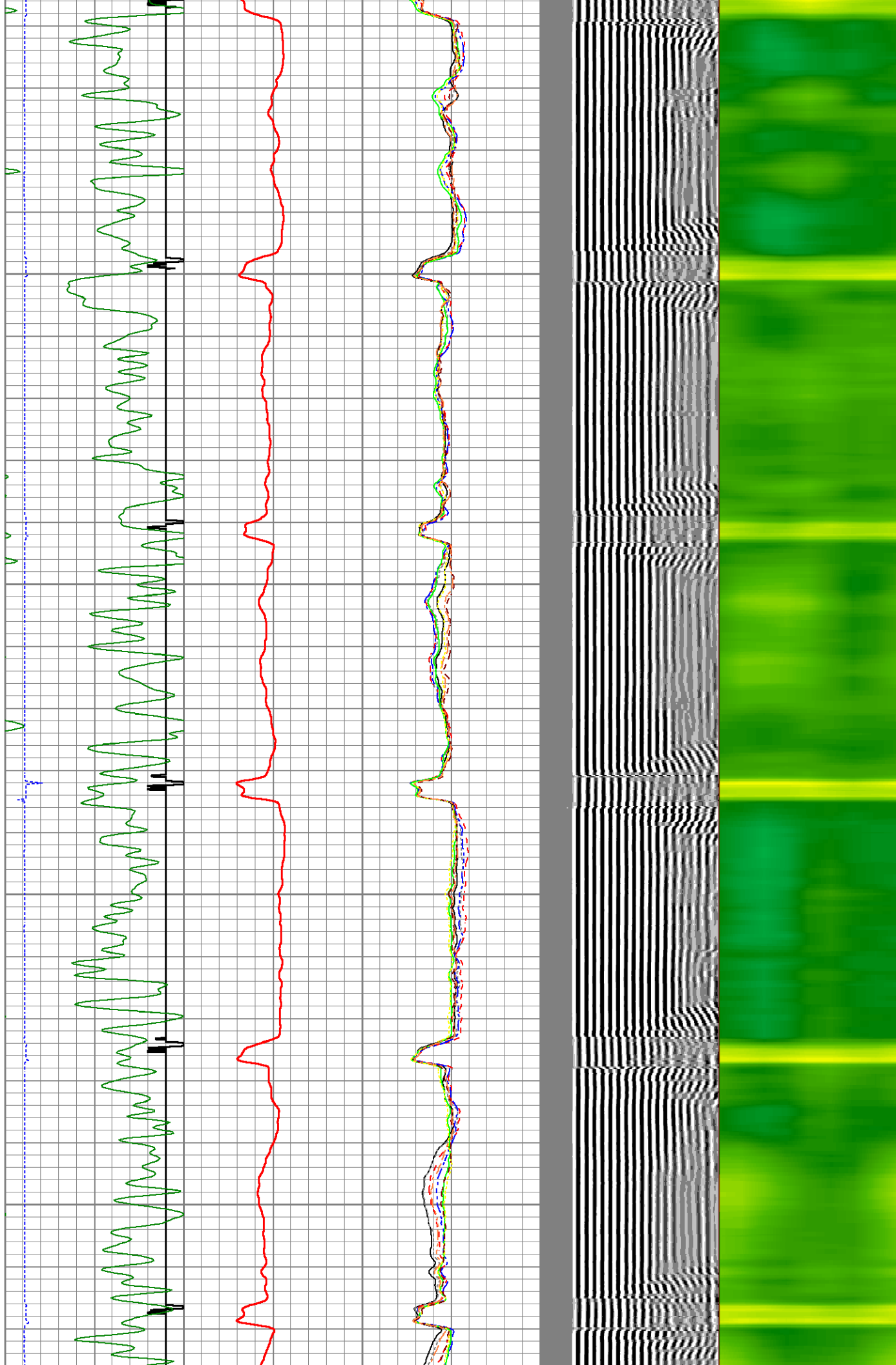


1100

1150

1200

1250

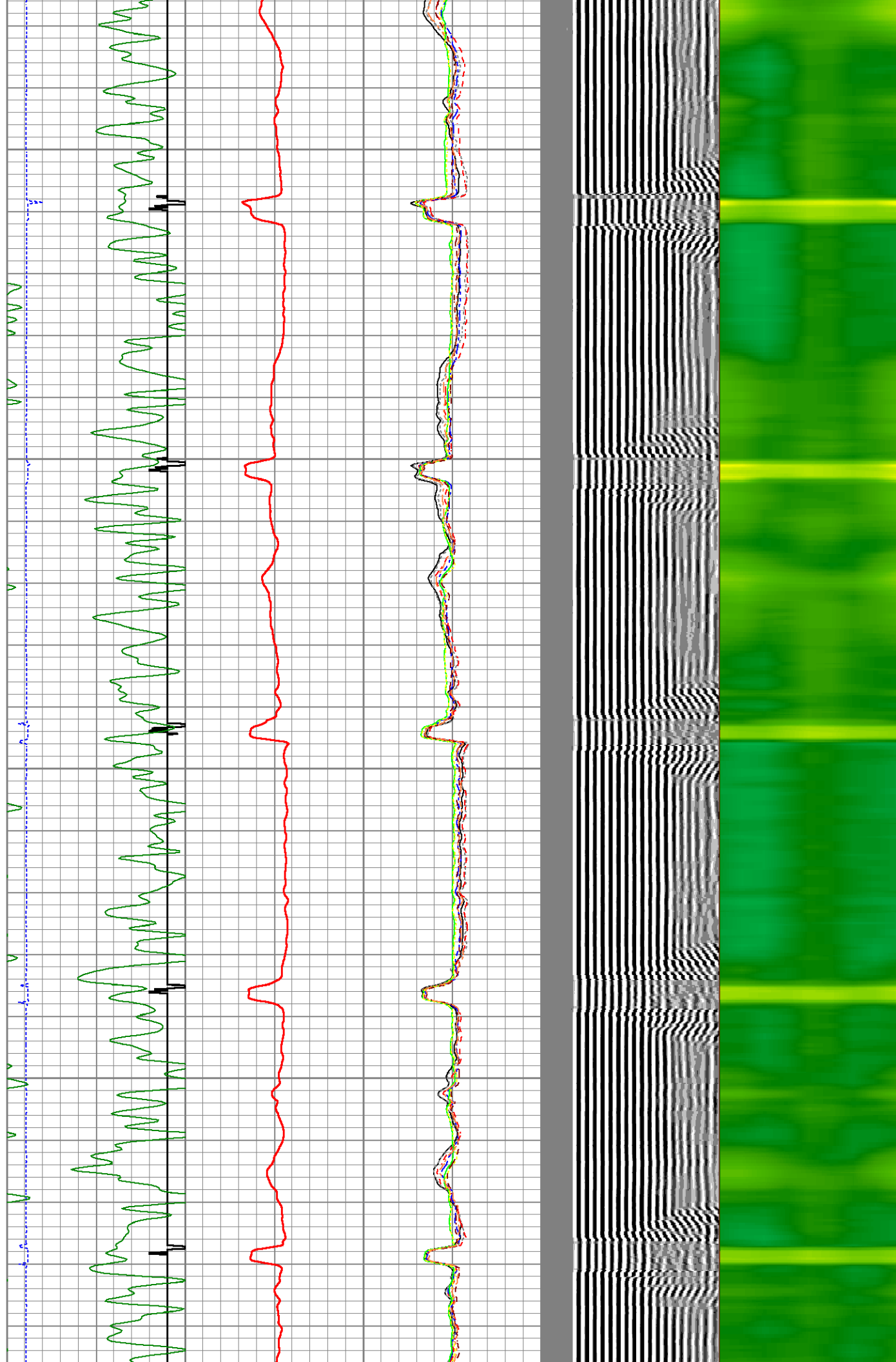


1300

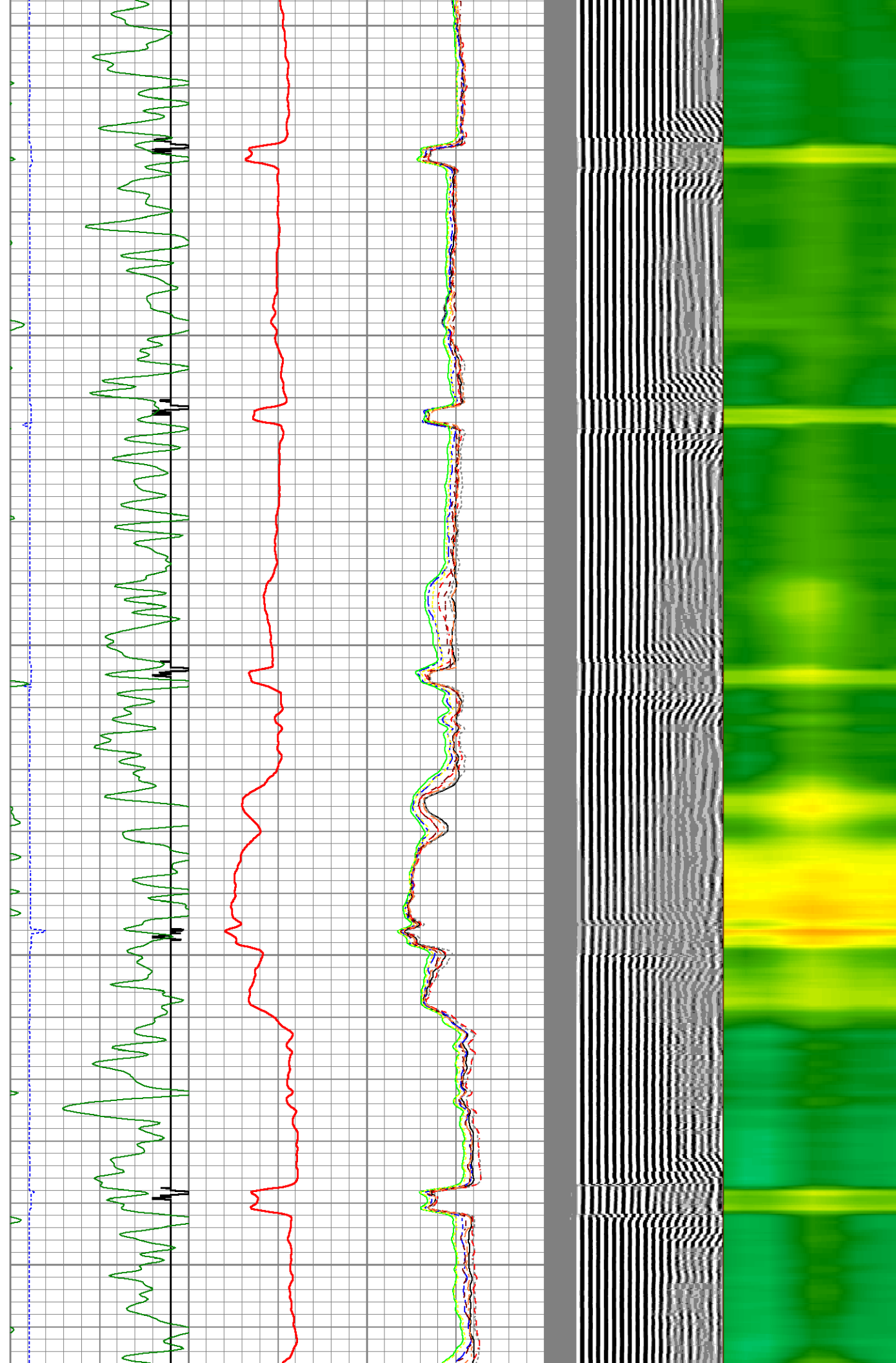
1350

1400

1450



1500
1550
1600
1650
1700

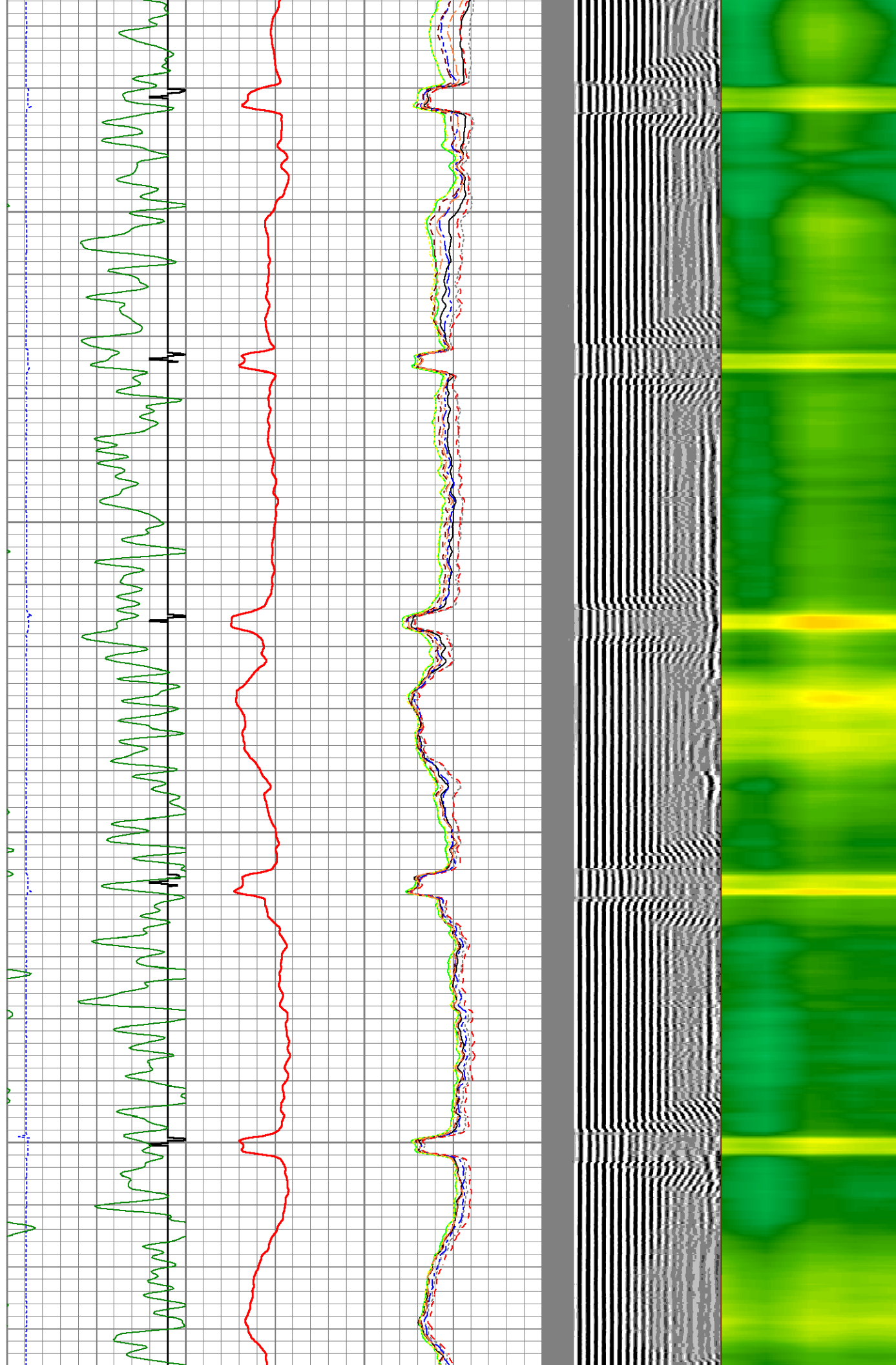


1750

1800

1850

1900



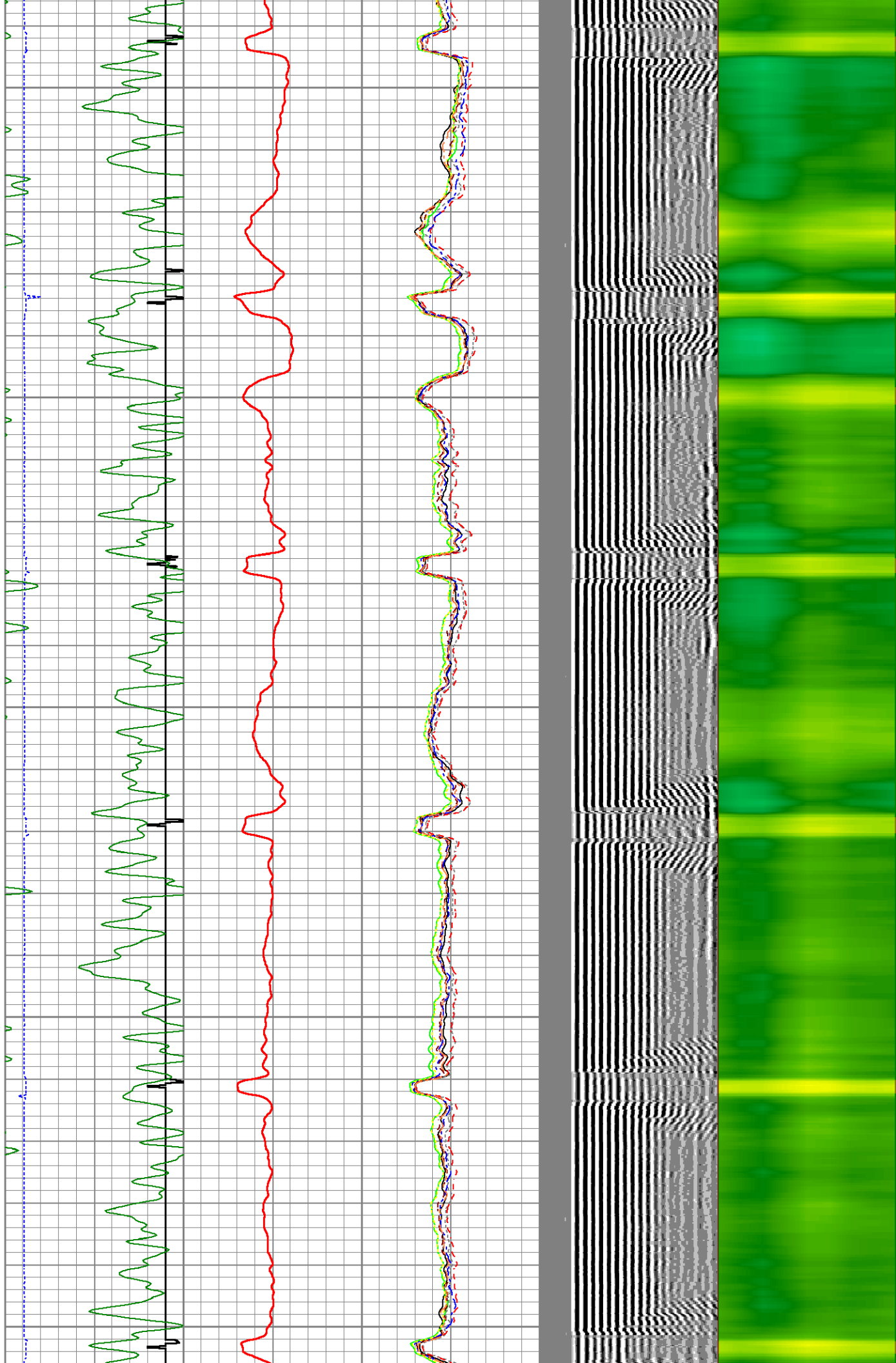
1950

2000

2050

2100

2150

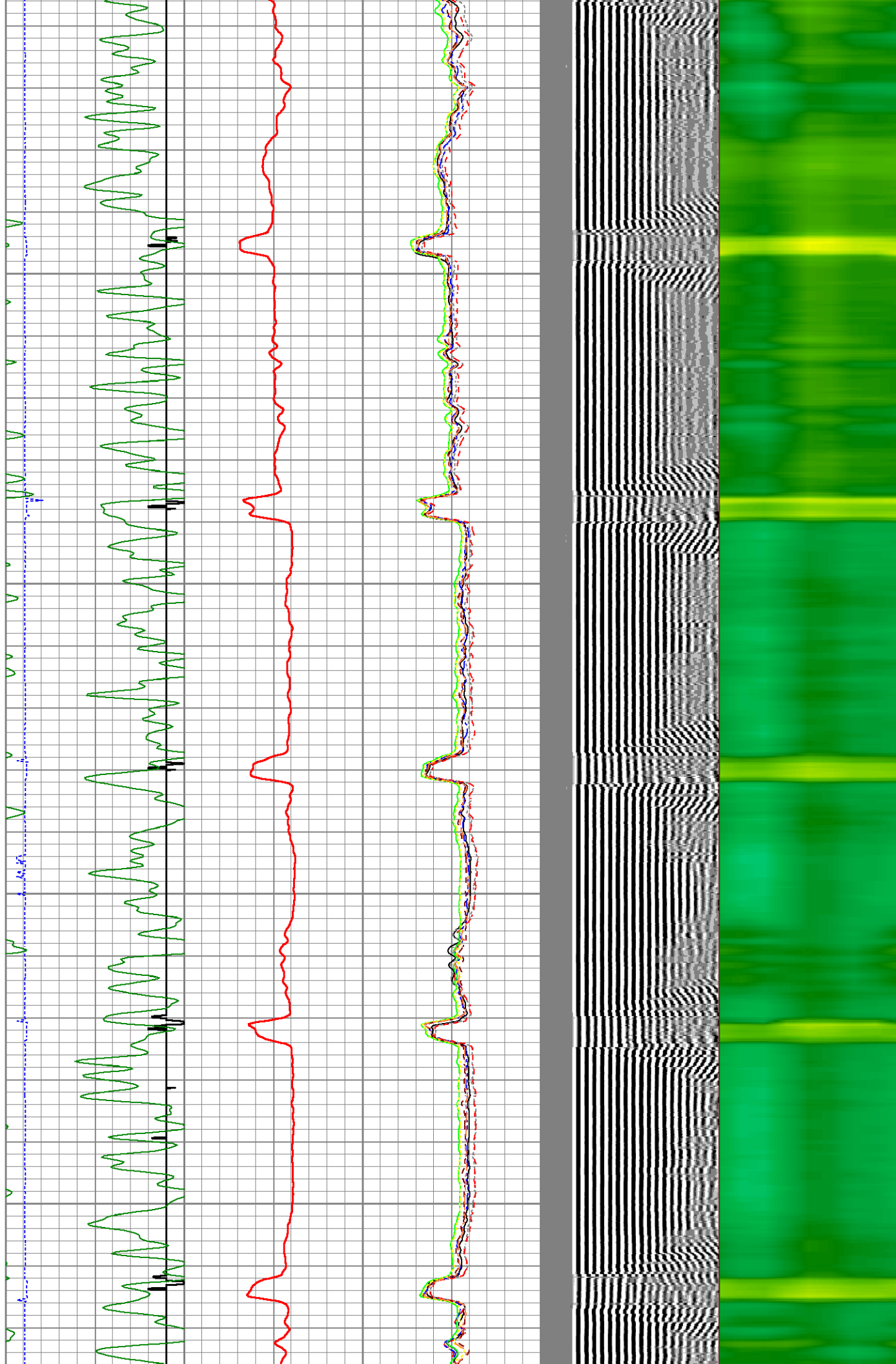


2200

2250

2300

2350

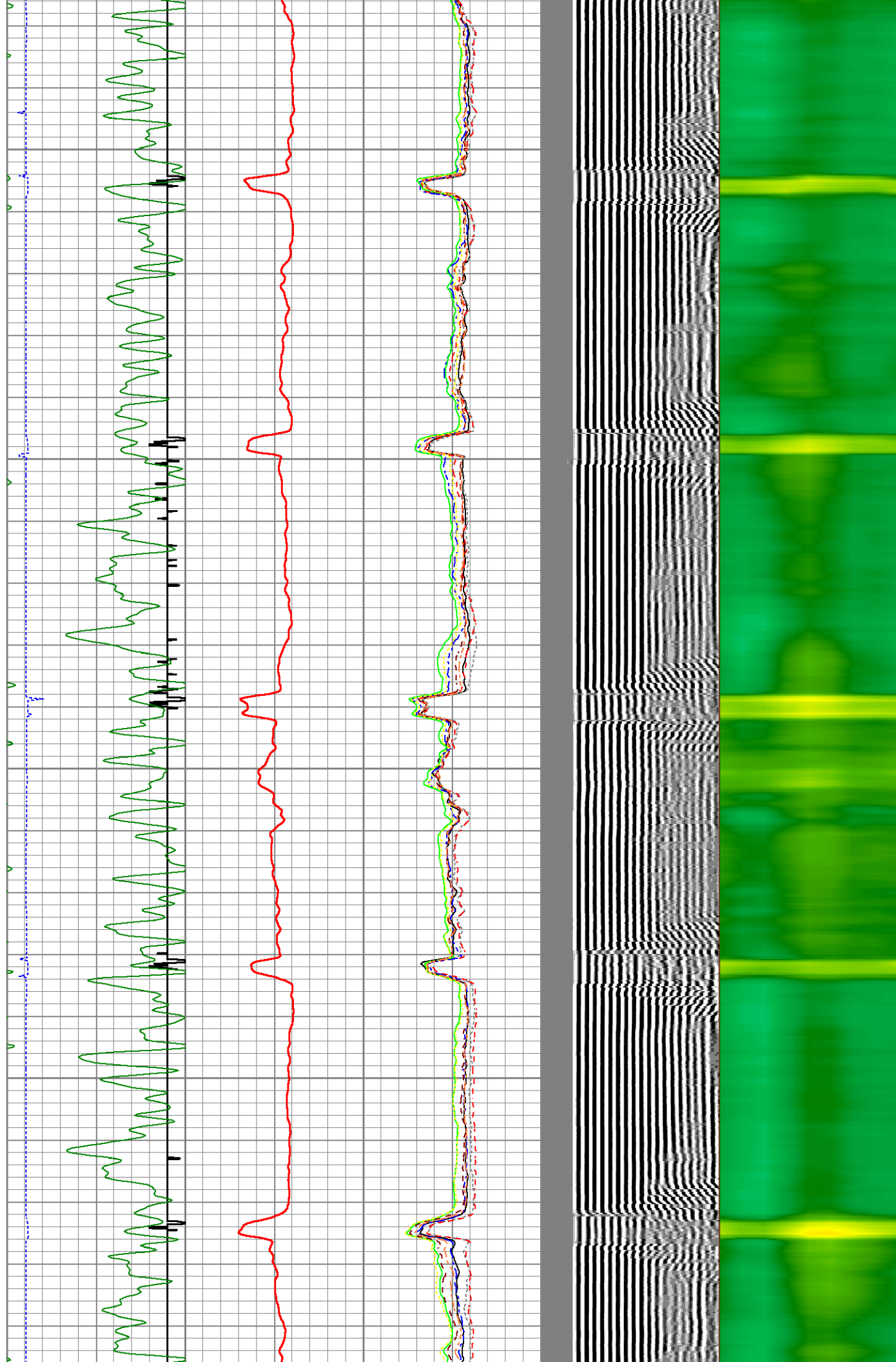


2400

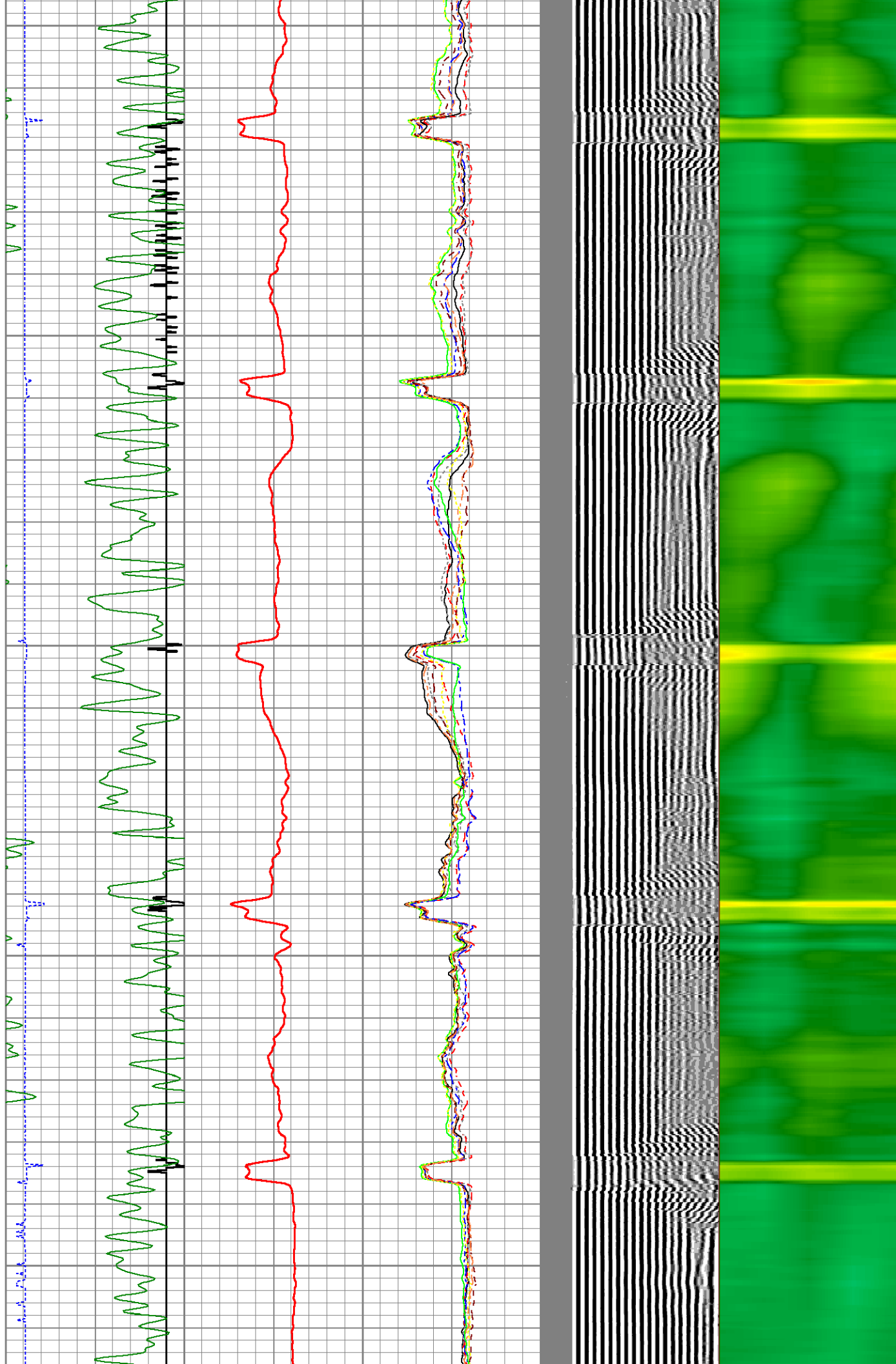
2450

2500

2550



2600
2650
2700
2750
2800

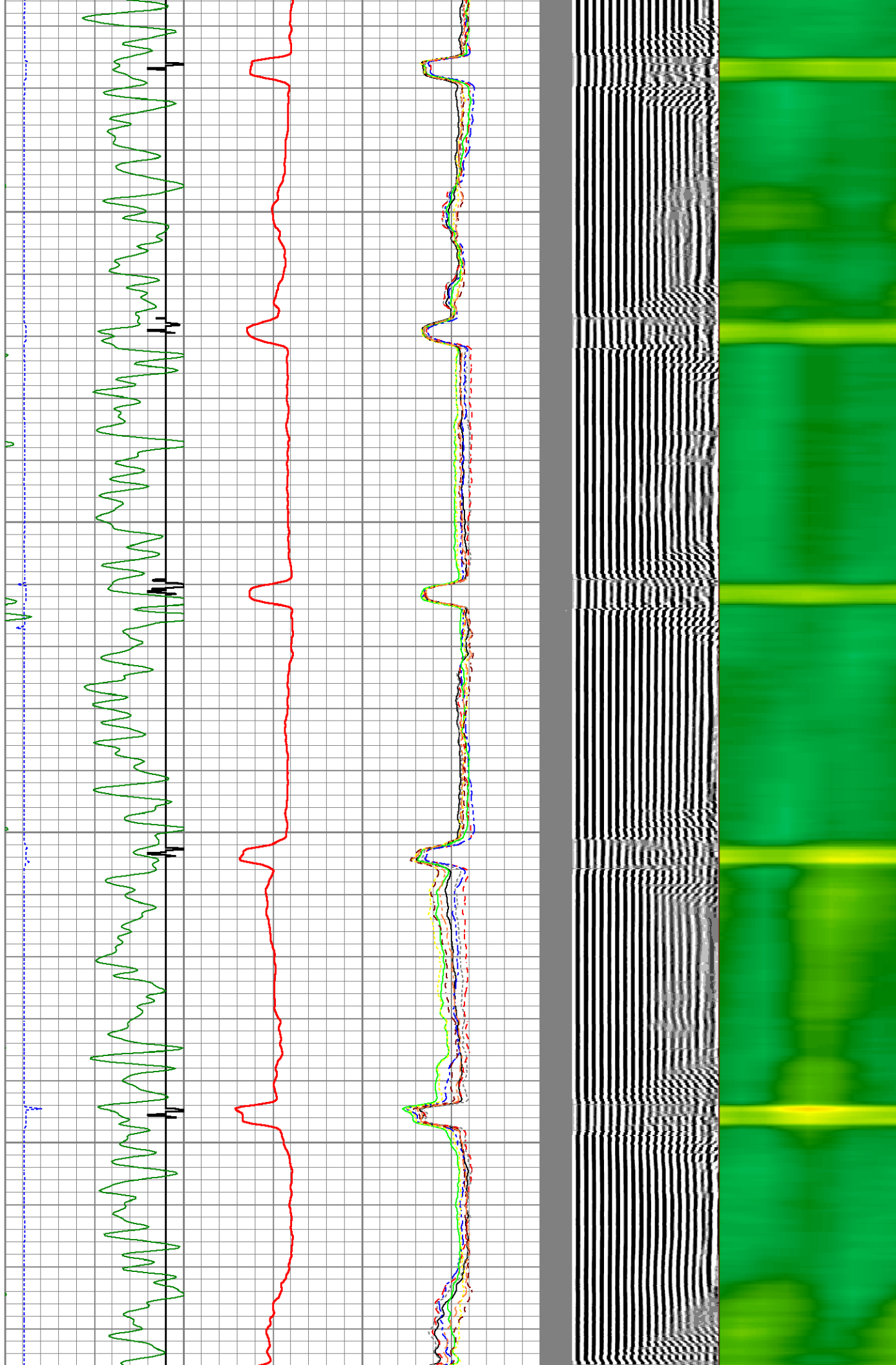


2850

2900

2950

3000



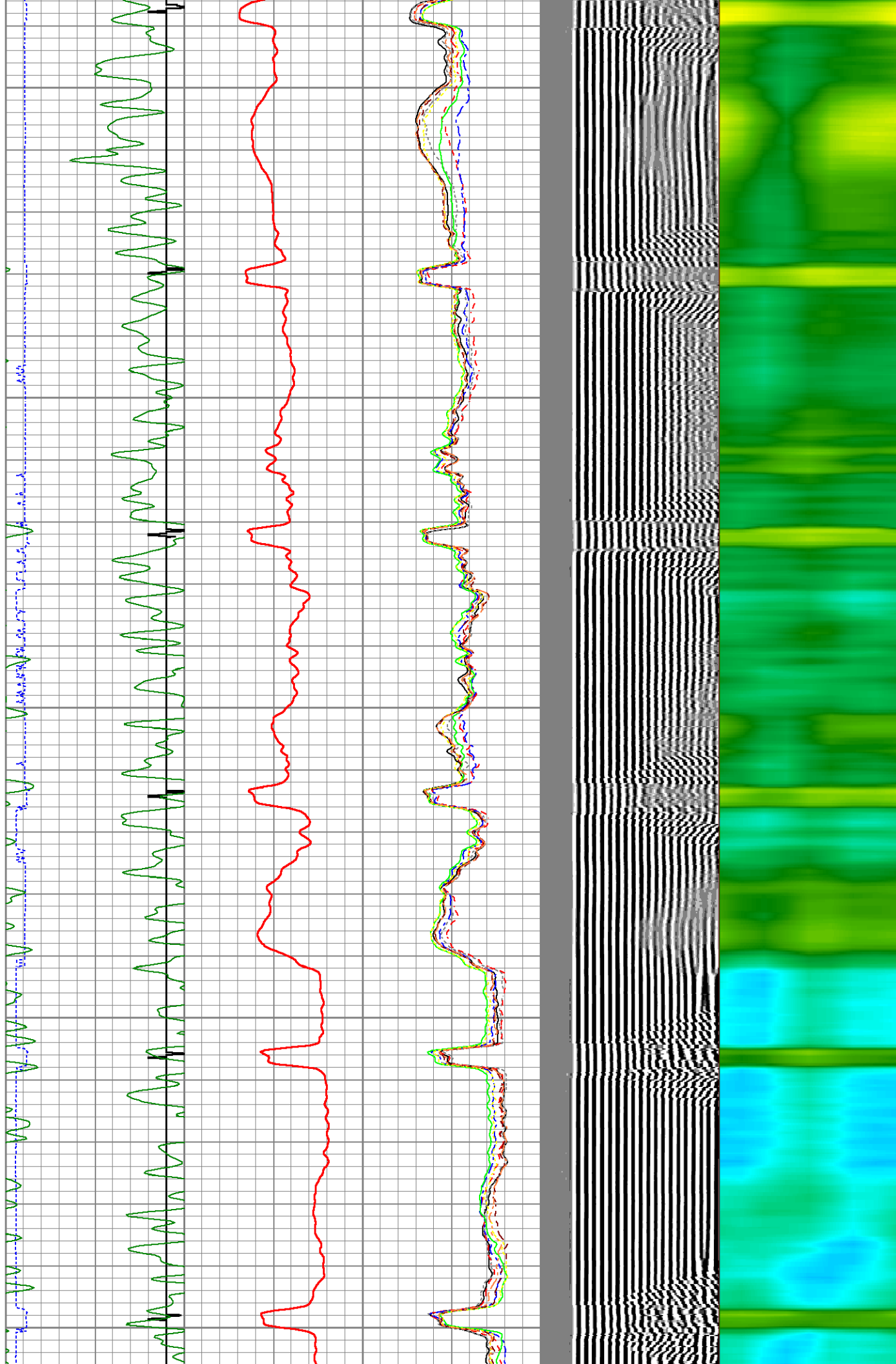
3050

3100

3150

3200

3250



3300

3350

3400

3450

GR

LSPD

CCL

AMP

AMPS8
AMPS7
AMPS6
AMPS5
AMPS4
AMPS3
AMPS2
AMPS1

