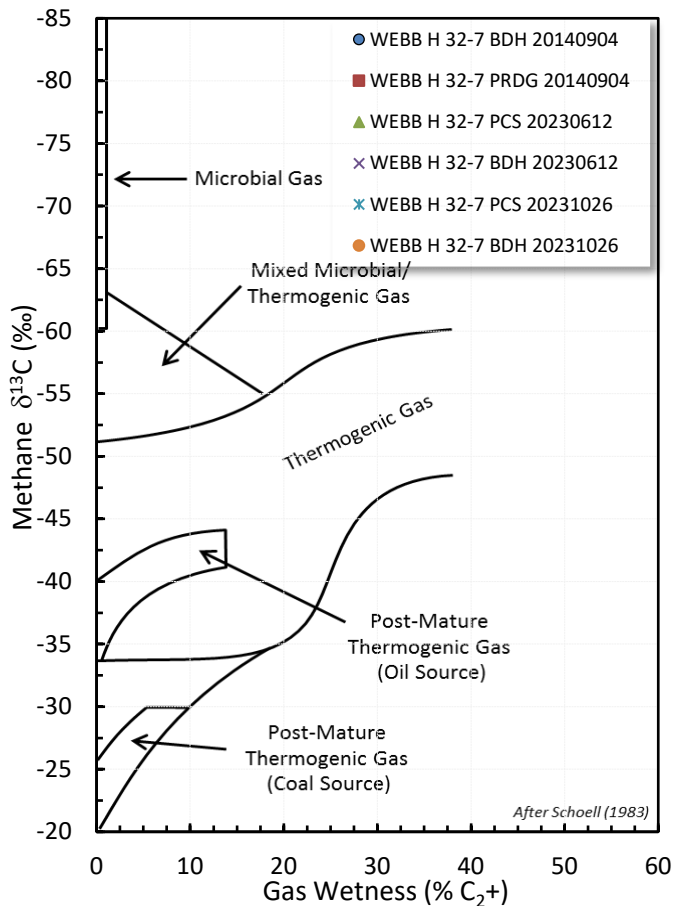
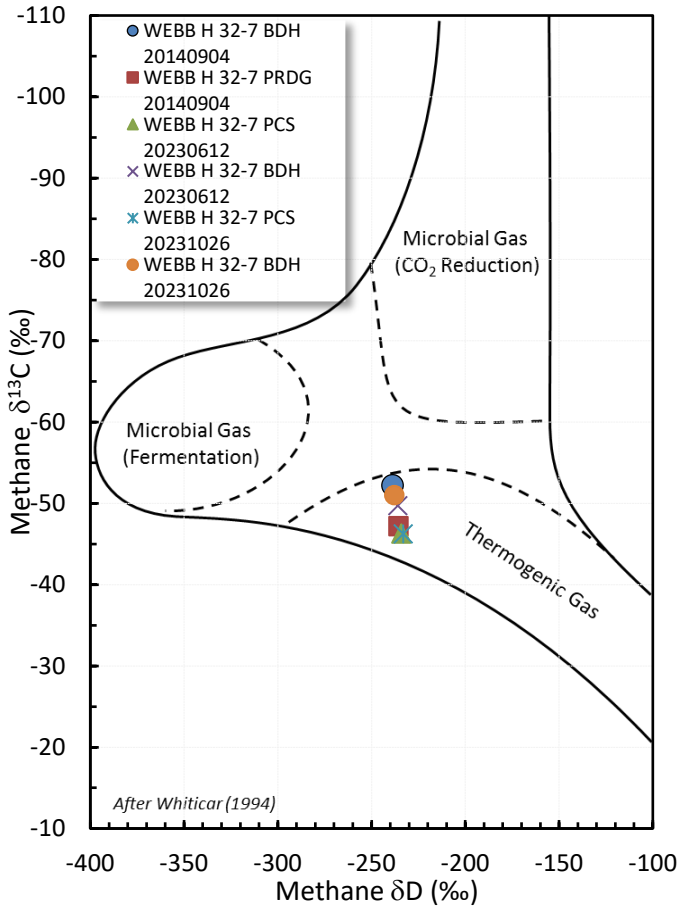


# Stable Isotope Interpretive Plots

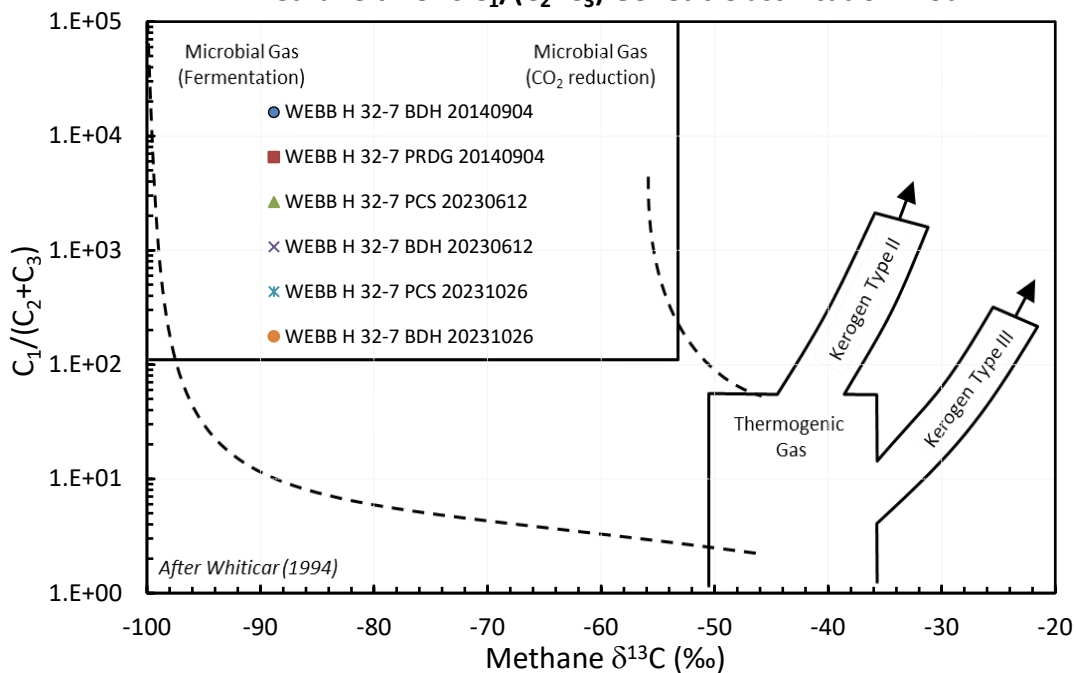
## Methane vs Gas Wetness Genetic Classification



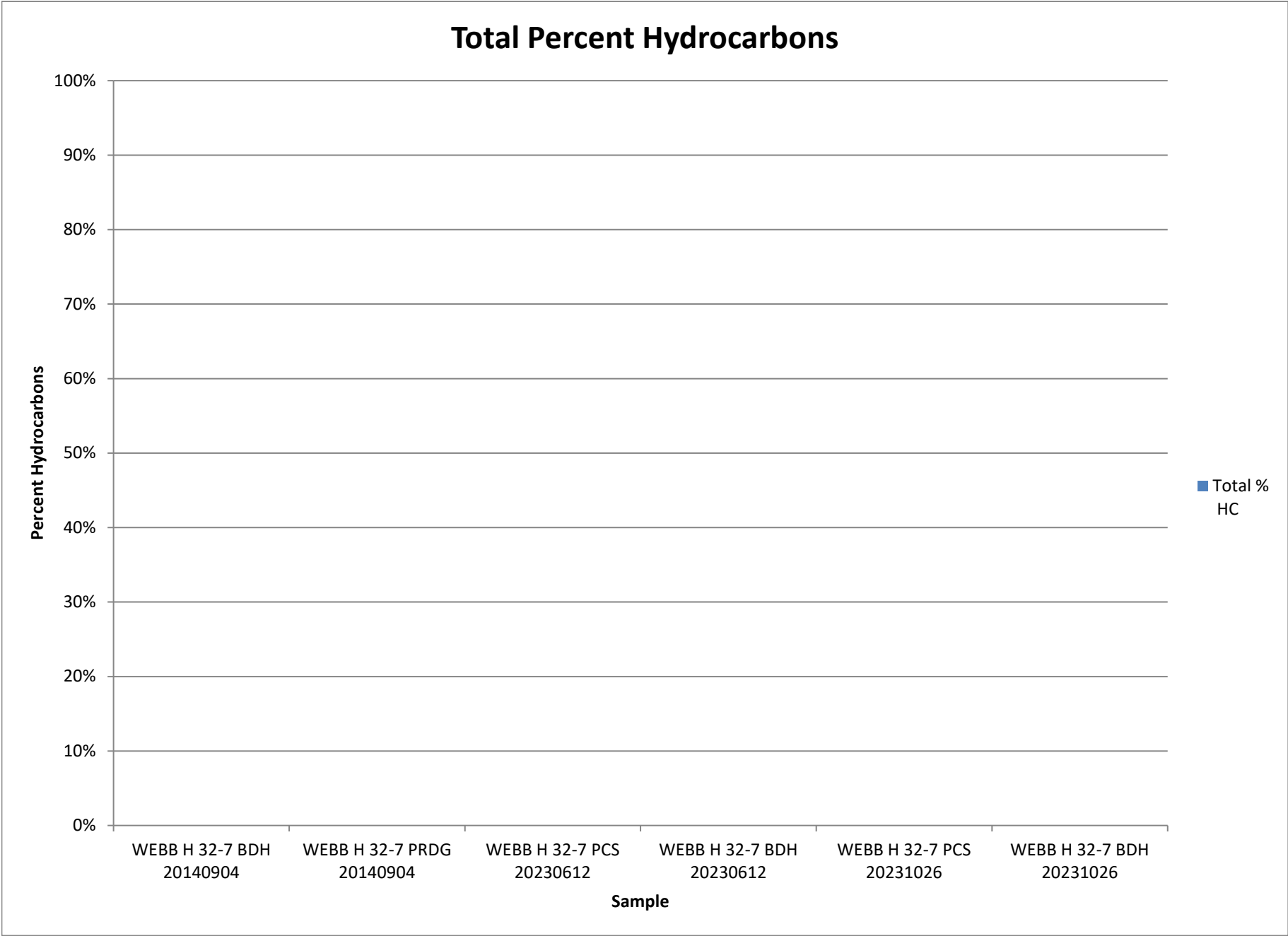
## Methane $\delta^{13}\text{C}$ vs $\delta\text{D}$ Genetic Classification Plot



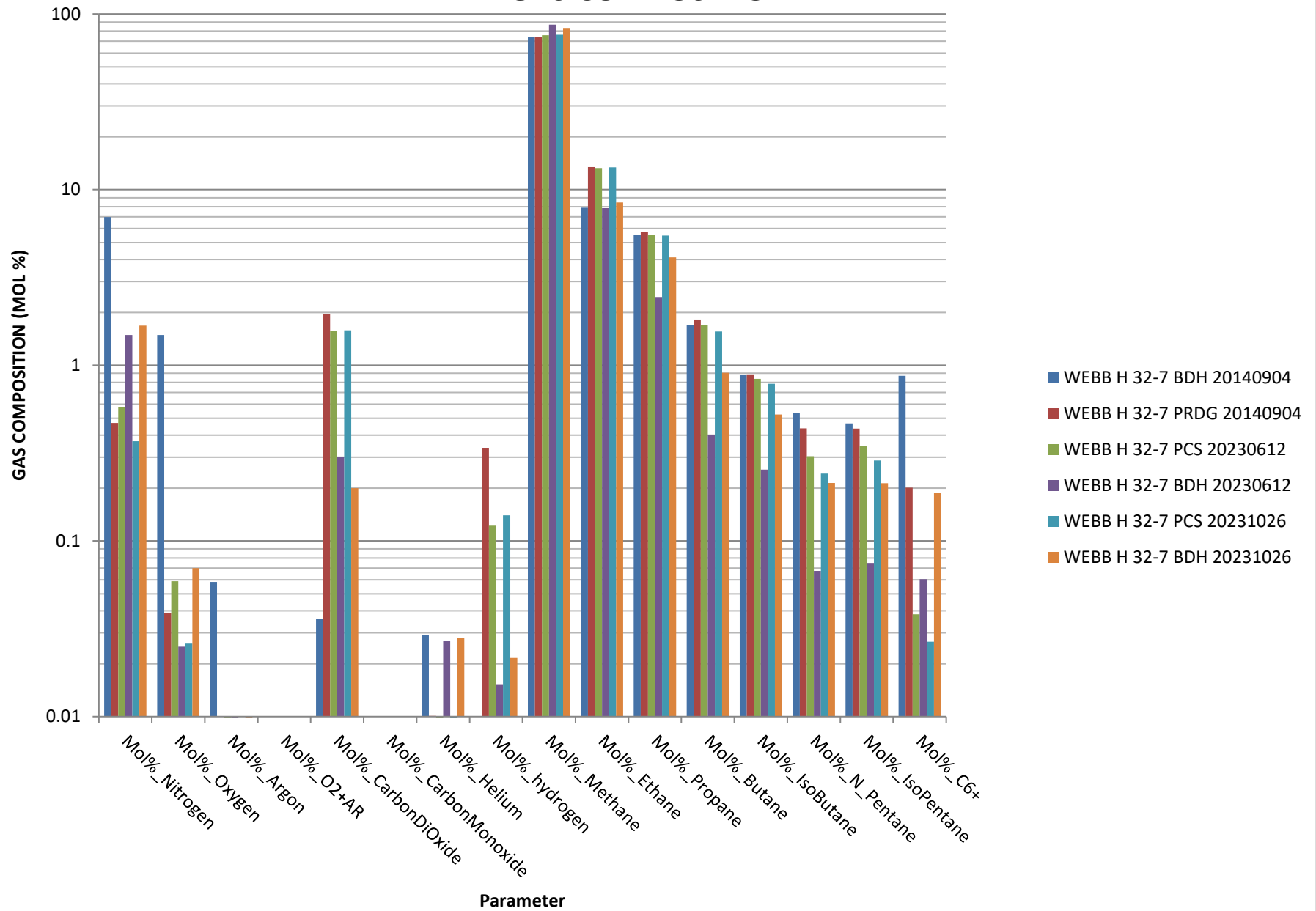
## Methane $\delta^{13}\text{C}$ vs $\text{C}_1/(\text{C}_2+\text{C}_3)$ Genetic Classification Plot



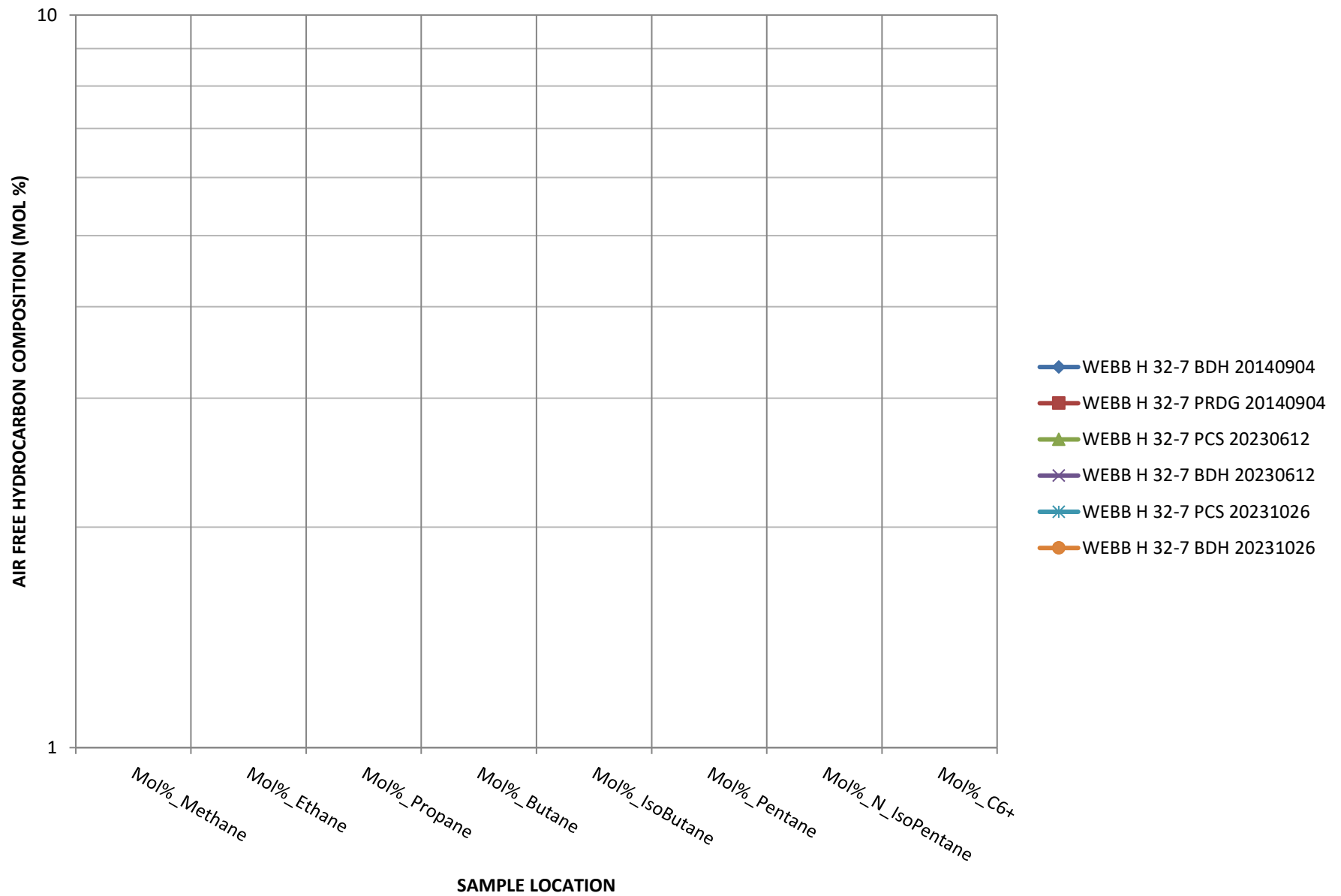
Total Percent Hydrocarbons

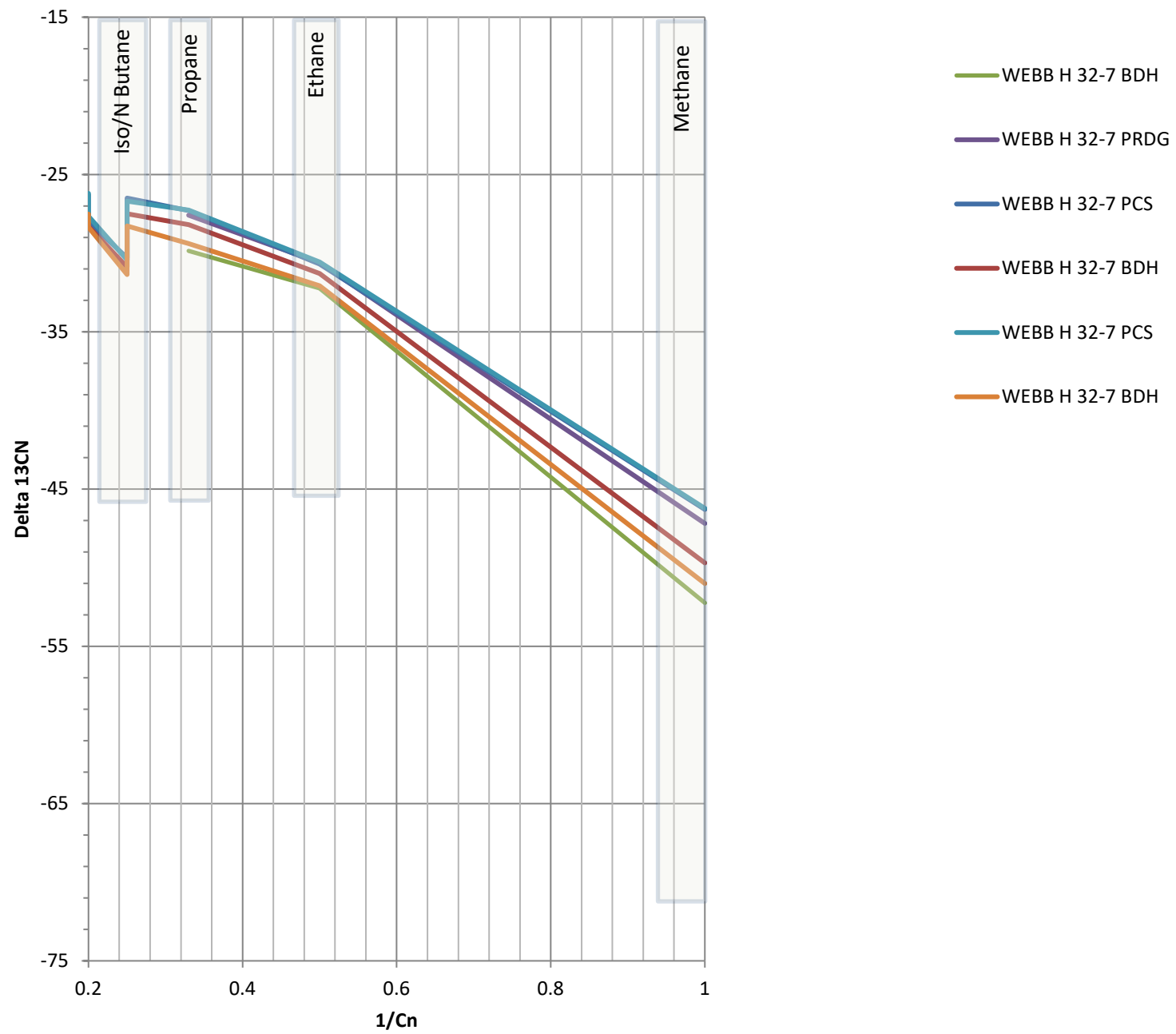


## GAS COMPOSITION

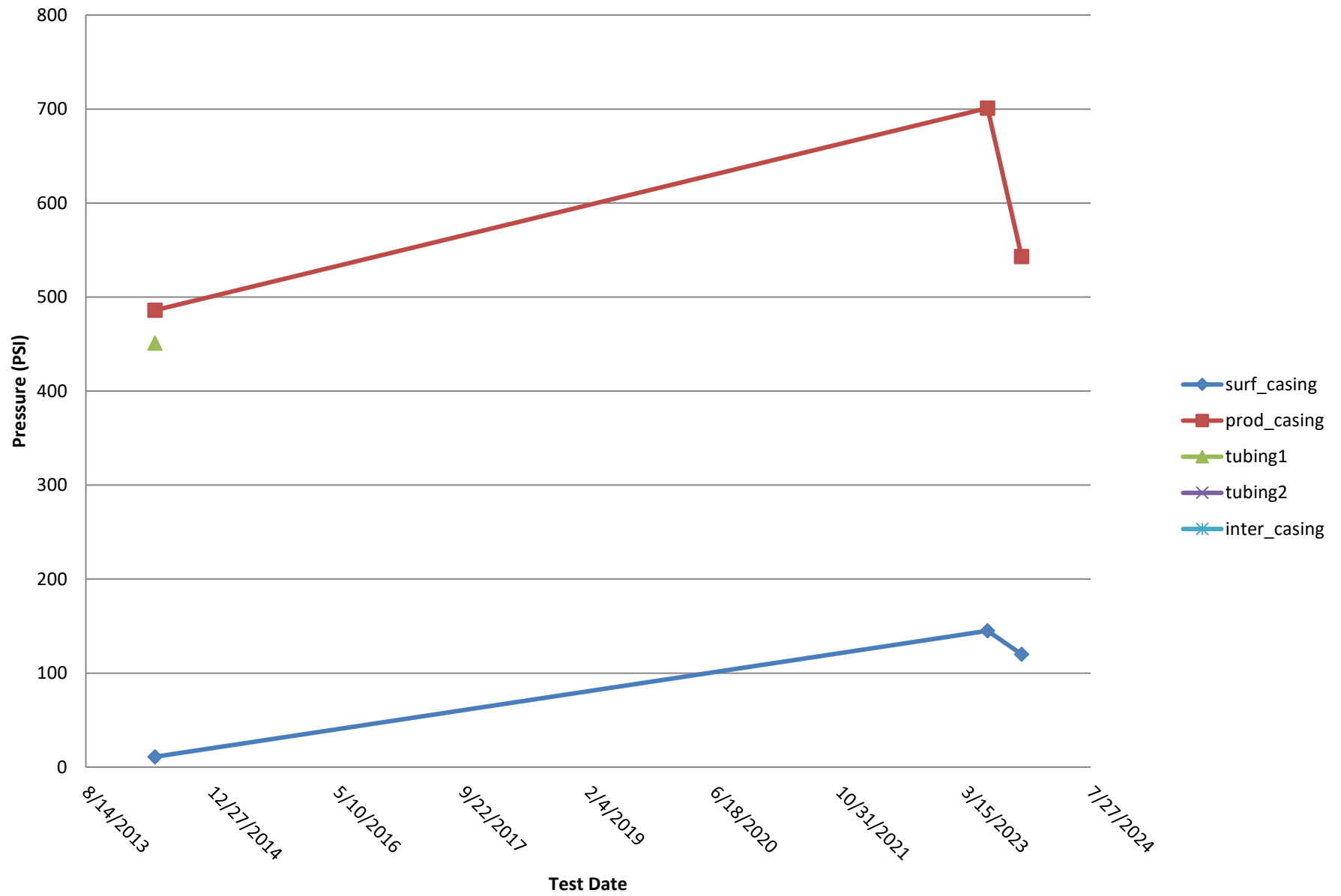


# HYDROCARBON COMPOSITION





## Bradenhead Test Summary

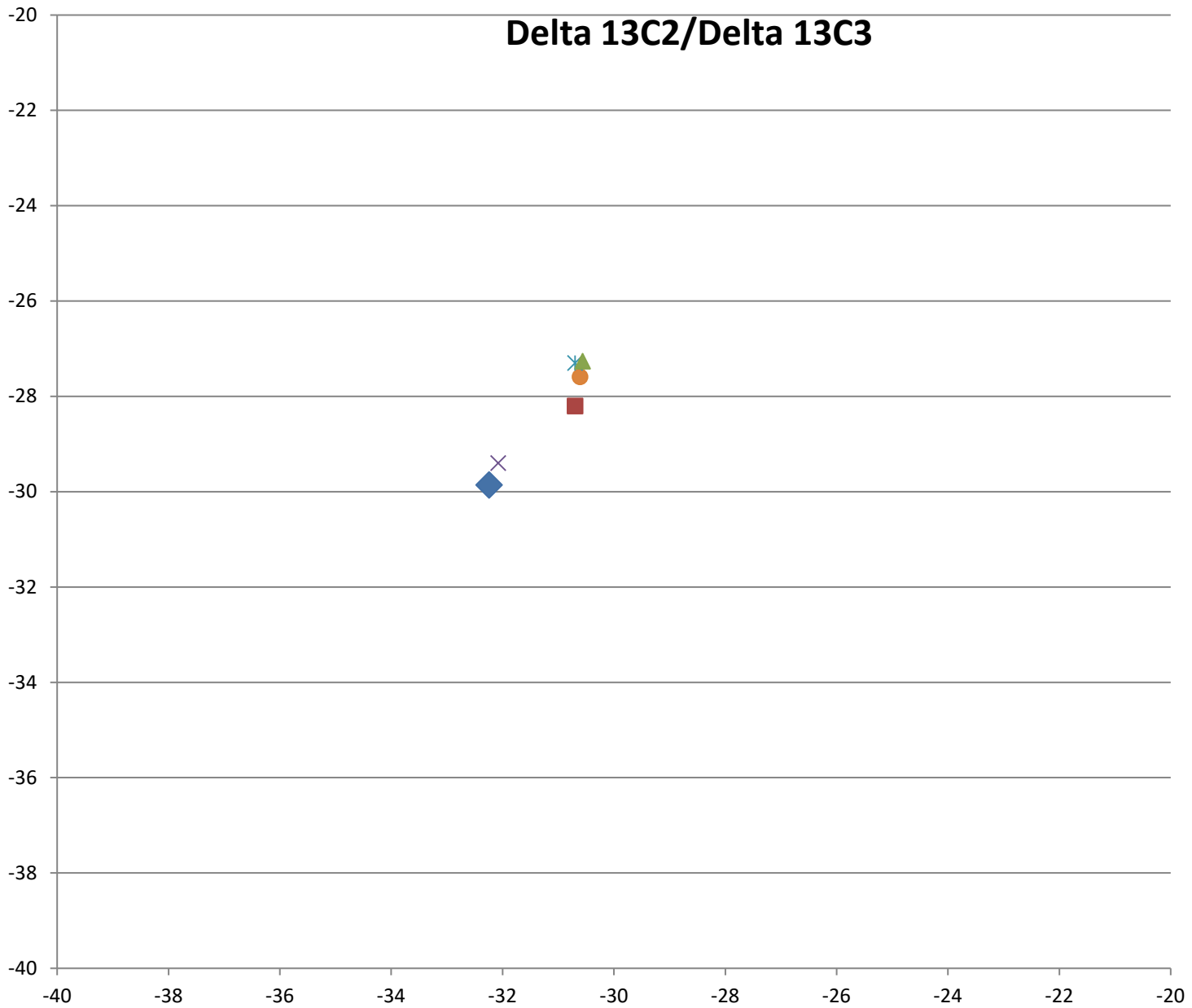


# Delta 13C2/Delta 13C3

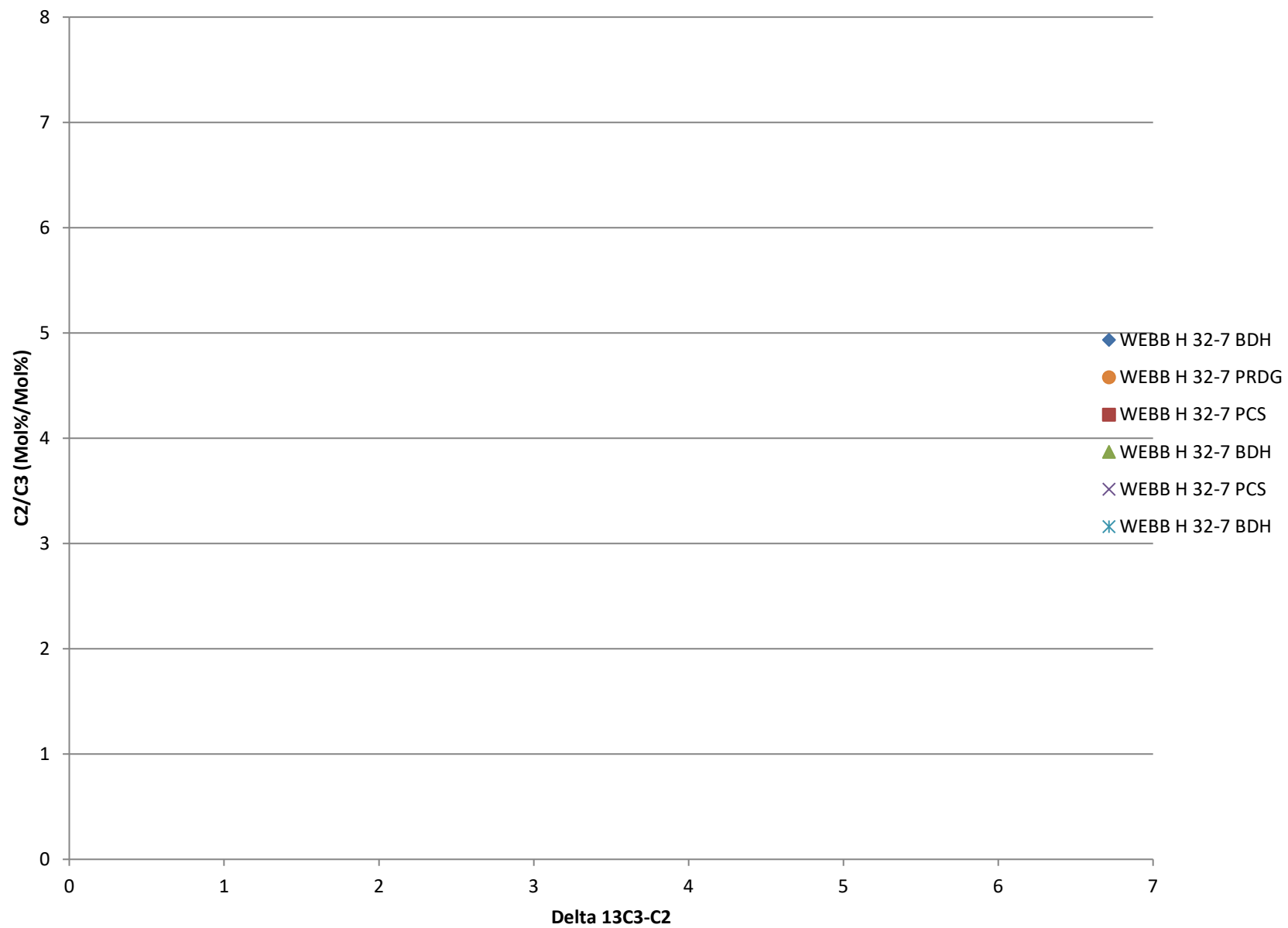
Delta 13 C3

- ◆ WEBB H 32-7 BDH
- WEBB H 32-7 PRDG
- ✱ WEBB H 32-7 PCS
- WEBB H 32-7 BDH
- ▲ WEBB H 32-7 PCS
- ✕ WEBB H 32-7 BDH

Delta 13 C2



## Delta13 C2/C3 vs. Delta 13C3-C2





## Delta 13 IC4/ Delta NC4

