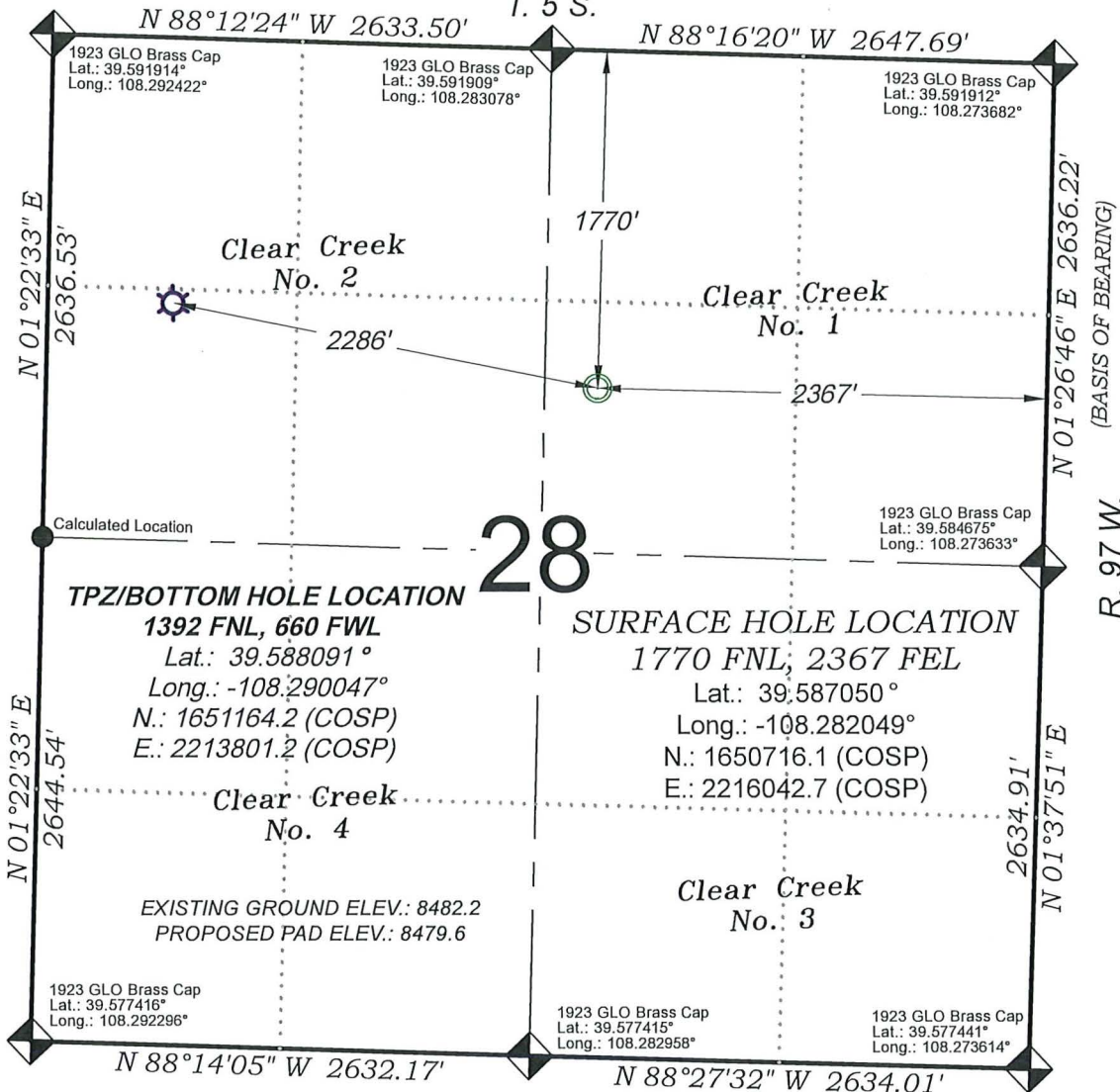
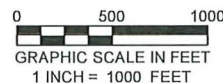


# Chevron TR 12-28-597

T. 5 S.



SEE CONSTRUCTION LAYOUT  
PLAT FOR VISIBLE IMPROVEMENTS  
WITHIN 2000' OF THIS LOCATION



## - LEGEND -

FIELD LOCATED SECTION  
MONUMENTS AS DESCRIBED

FIELD SURVEYED  
WELL LOCATION

CALCULATED BOTTOM  
HOLE LOCATION

CALCULATED SECTION  
CORNER LOCATION

## SURVEYORS STATEMENT

I, MICHAEL J. LANGHORNE, A REGISTERED LAND SURVEYOR IN THE STATE OF COLORADO DO HEREBY CERTIFY THAT THE SURVEY SHOWN HEREON WAS PREPARED UNDER MY DIRECT SUPERVISION AND HAS BEEN STAKED ON THE GROUND AS SHOWN ON THE PLAT AND CHECKING THAT THIS MAP IS A TRUE REPRESENTATION THEREOF.

*Michael J. Langhorne*

MICHAEL J. LANGHORNE, COLORADO REGISTRATION NO. 36572  
FOR AND ON BEHALF OF  
BOOKCLIFF SURVEY SERVICES, INC.

## REFERENCES

- 1) INDEPENDENT RE-SURVEY T. 5 S., R. 97 W., 6th P.M. (GLO PLAT)
- 2) U.S.G.S. QUAD: Circle Dot Gulch, CO

Revised: 3/31/23

136 East Third Street  
Rifle, Colorado  
81650 Ph. (970)  
625-2720 Fax (970)  
625-2773



**BOOKCLIFF**  
Survey Services, Inc.

SURVEY DATE: 9/12/14  
MAP DATE: 3/20/23  
SCALE: 1" = 1000'  
PLAT: 1 of 1  
PROJECT: TEP Valley

## NOTES

- 1) ELEVATIONS BASED ON N.A.V.D. 1988 PUBLISHED COORDINATES.
- 2) LATITUDES AND LONGITUDES ARE BASE ON NAD 83, PUBLISHED COORDINATES
- 3) STATE PLANE COORDINATES ARE BASED ON COLORADO CENTRAL ZONE, U.S. SURVEY FEET.
- 4) ELEVATION MASK SET TO 15"
- 5) GPS OPERATOR J. KIRKPATRICK, OBSERVED A PDOP 2.5 ON SURVEY POINT NUMBER 221.
- 6) SURFACE AND BOTTOM HOLE LOCATIONS ARE MEASURED 90° FROM SECTION LINES.

## WELL LOCATION PLAT Prepared for:



TEP Rocky Mountain LLC

SW1/4 NE1/4, SECTION 28  
T. 5 S., R. 97 W. of the 6th. P.M.  
GARFIELD COUNTY, COLORADO