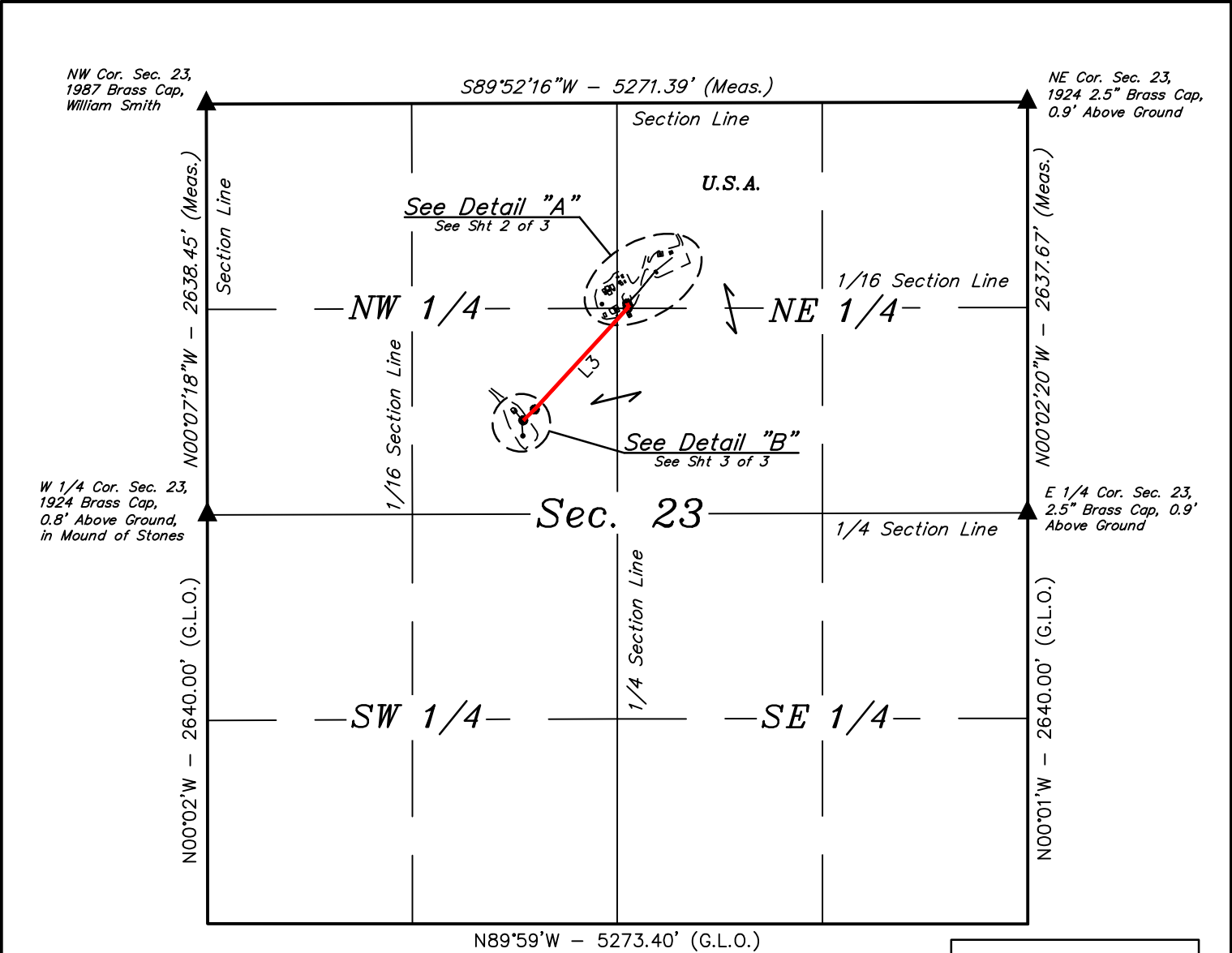


**WEXPRO COMPANY  
MOSU FUEL GAS LINE TO F WILSON 23  
SECTION 23, T12N, R100W, 6th P.M.  
MOFFIT COUNTY, COLORADO**

DATE:

DESCRIPTION:

[illegible]



LINE TABLE		
LINE	DIRECTION	LENGTH
L1	S26°06'57"E	18.67'
L2	S26°01'13"W	13.67'
L3	S42°29'31"W	881.48'
L4	S46°14'10"W	102.12'

AS-BUILT GAS PIPELINE DESCRIPTION

BEGINNING AT A POINT IN THE NW 1/4 NE 1/4 OF SECTION 23, T12N, R100W, 6th P.M., WHICH BEARS S63°16'28\"/>

POINT OF BEGINNING BEARS S63°16'28\"/>

POINT OF TERMINATION BEARS N73°21'03\"/>



LENGTH TABLE	
FEET	RODS
1015.94	61.57

▲ = SECTION CORNERS LOCATED.

FILE: W-2344-A1

Sheet 1 of 3



UELS, LLC  
Corporate Office \* 85 South 200 East  
Vernal, UT 84078 \* (435) 789-1017



WEXPRO COMPANY

MOSU FUEL GAS LINE TO F WILSON 23  
ON U.S.A. LANDS IN  
SEC 23, T12N, R100W, 6th P.M.  
MOFFIT COUNTY, COLORADO

SURVEYED BY	CODY RICH, T.P.	10-21-19	SCALE
DRAWN BY	B.L.B.	10-24-19	1" = 1000'

AS-BUILT GAS LINE

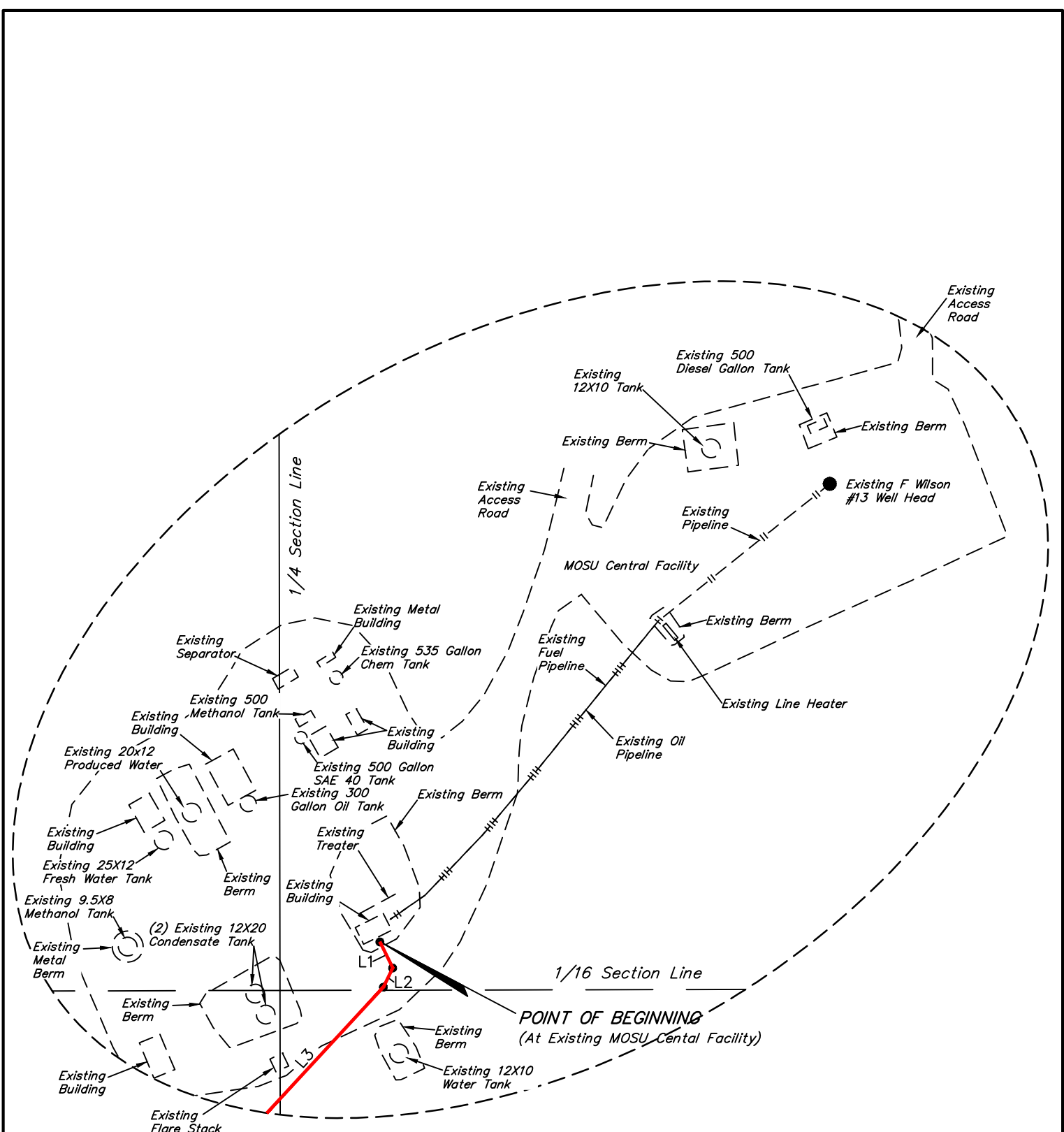
CERTIFICATE

THIS IS TO CERTIFY THAT THE ABOVE PLAT WAS PREPARED FROM FIELD NOTES OF ACTUAL SURVEYS MADE BY ME OR UNDER MY SUPERVISION AND THAT THE SAME ARE TRUE AND CORRECT TO THE BEST OF MY KNOWLEDGE AND BELIEF.

REGISTERED LAND SURVEYOR

REGISTRATION NO. 38391

STATE OF COLORADO



Detail "A"  
No Scale

CERTIFICATE

THIS IS TO CERTIFY THAT THE ABOVE PLAT WAS PREPARED FROM FIELD NOTES OF ACTUAL SURVEYS MADE BY ME OR UNDER MY SUPERVISION AND THAT THE SAME ARE TRUE AND CORRECT TO THE BEST OF MY KNOWLEDGE AND BELIEF.

REGISTERED LAND SURVEYOR  
REGISTRATION NO. 38391  
STATE OF COLORADO

FILE: W-2344-A2

Sheet 2 of 3



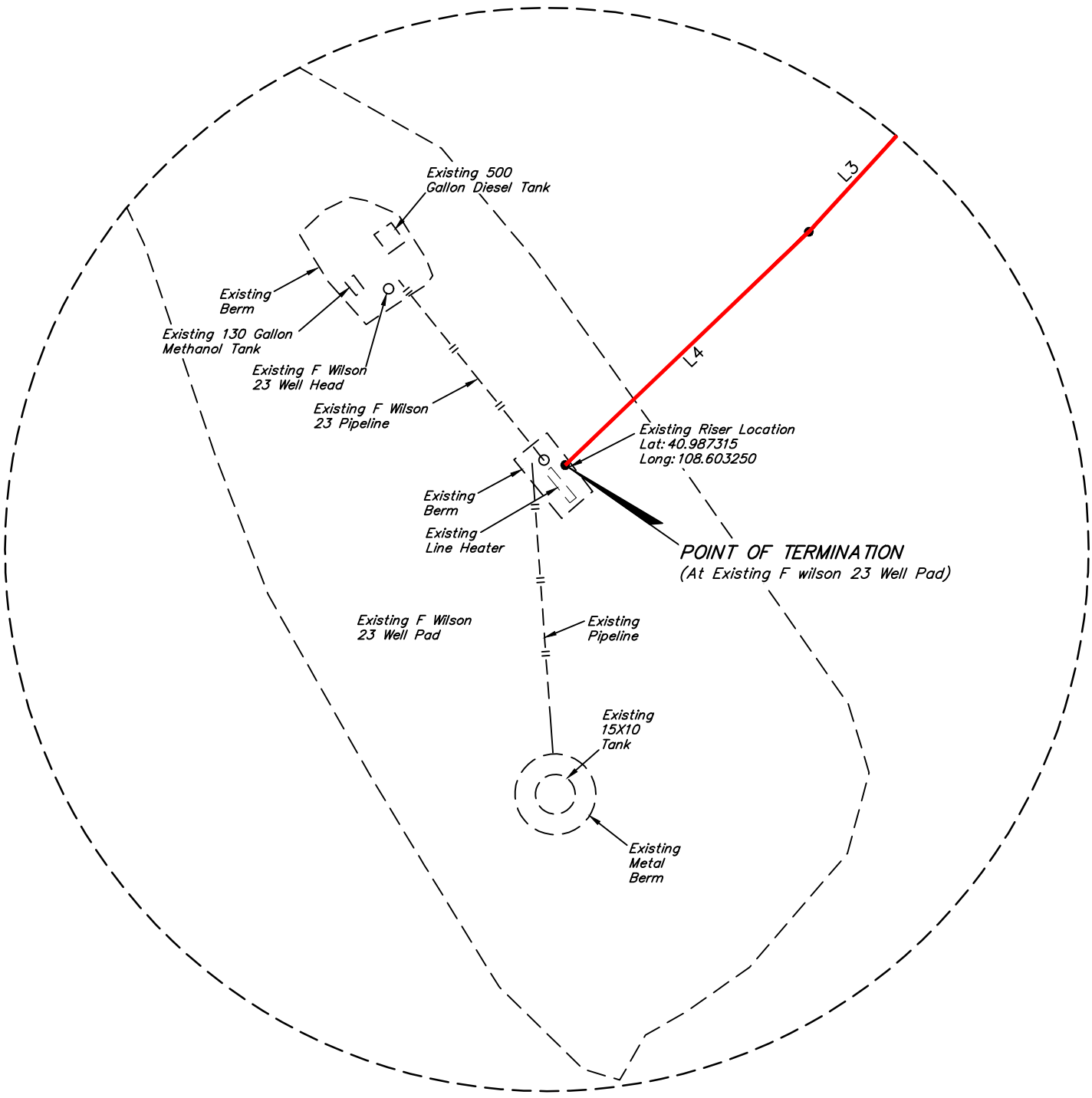
WEXPRO COMPANY

MOSU FUEL GAS LINE TO F WILSON 23  
ON U.S.A. LANDS IN  
SEC 23, T12N, R100W, 6th P.M.  
MOFFIT COUNTY, COLORADO

SURVEYED BY	CODY RICH, T.P.	10-21-19	SCALE
DRAWN BY	B.L.B.	10-24-19	N/A
AS-BUILT GAS LINE			



UELS, LLC  
Corporate Office \* 85 South 200 East  
Vernal, UT 84078 \* (435) 789-1017



Detail "B"  
No Scale

CERTIFICATE

THIS IS TO CERTIFY THAT THE ABOVE PLAT WAS PREPARED FROM FIELD NOTES OF ACTUAL SURVEYS MADE BY ME OR UNDER MY SUPERVISION AND THAT THE SAME ARE TRUE AND CORRECT TO THE BEST OF MY KNOWLEDGE AND BELIEF.

REGISTERED LAND SURVEYOR  
REGISTRATION NO. 38391  
STATE OF COLORADO

FILE: W-2344-A3

Sheet 3 of 3



**WEXPRO COMPANY**

**MOSU FUEL GAS LINE TO F WILSON 23  
ON U.S.A. LANDS IN  
SEC 23, T12N, R100W, 6th P.M.  
MOFFIT COUNTY, COLORADO**

SURVEYED BY	CODY RICH, T.P.	10-21-19	SCALE
DRAWN BY	B.L.B.	10-24-19	N/A
AS-BUILT GAS LINE			



**UELS, LLC**  
Corporate Office \* 85 South 200 East  
Vernal, UT 84078 \* (435) 789-1017