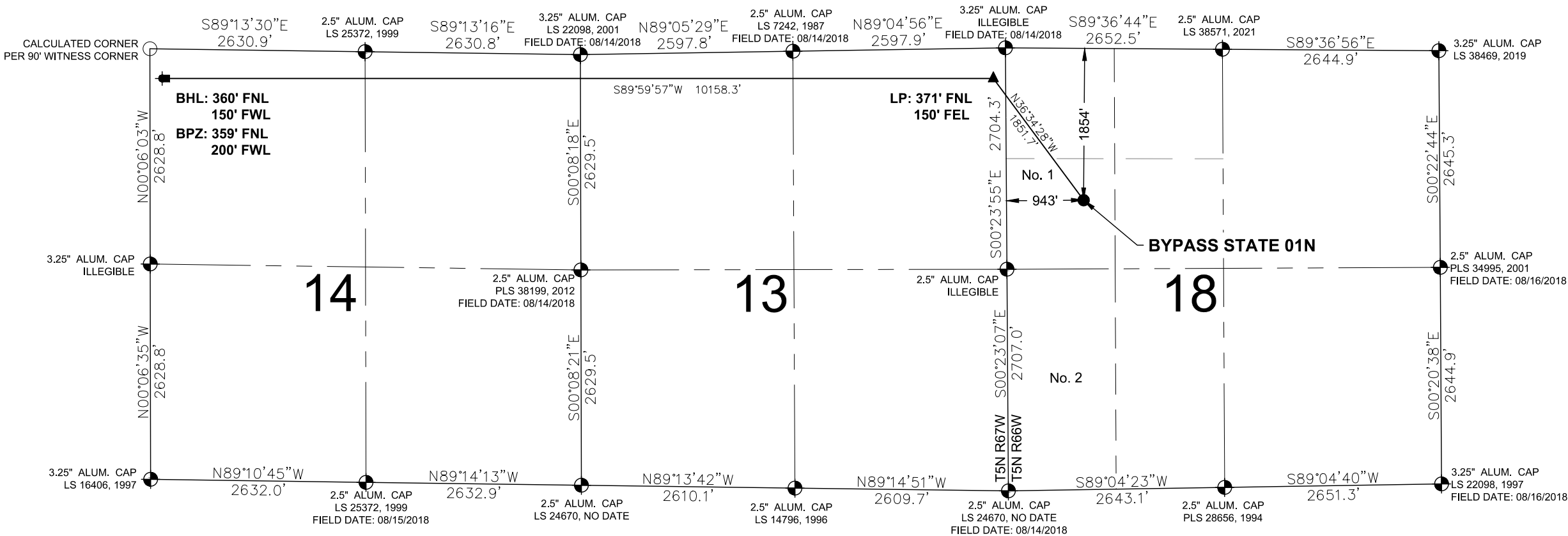


BYPASS STATE 01N
WELL LOCATION EXHIBIT



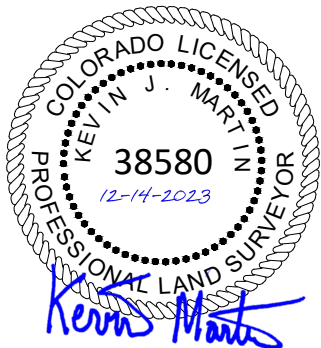
NOTES:

1. THIS FIELD SURVEY CONFORMS TO THE MINIMUM STANDARDS SET BY THE ECMC, RULE NO. 216.
2. ALL DISTANCE AND BEARINGS SHOWN HEREON ARE GROUND VALUES AS GPS MEASURED IN THE FIELD, WITH TIES TO WELLS MEASURED PERPENDICULAR TO LINES SHOWN HEREON. THIS LOW DISTORTION PROJECTION (LDP) IS BASED ON THE NORTH AMERICAN DATUM OF 1983, U.S. SURVEY FOOT WITH A LATITUDE ORIGIN OF 40.392439°N, A CENTRAL MERIDIAN LONGITUDE OF -104.888128°W, AND A SCALE FACTOR ON THE CENTRAL MERIDIAN OF 1.000232 (EXACT). THE LDP BASIS OF BEARINGS IS GEODESIC NORTH.
3. FIELD VERIFICATION OF MONUMENTS COMPLETED WITHIN 1 YEAR OF SIGNATURE DATE, UNLESS OTHERWISE NOTED.
4. ON AUGUST 7, 2023, CHEVRON ACQUIRED PDC ENERGY, INC. ("PDC"). PDC IS CONTINUING TO OPERATE AS A WHOLLY OWNED SUBSIDIARY OF CHEVRON.

LEGEND

- = EXISTING MONUMENT
- = CALCULATED POSITION
- = PROPOSED WELL
- = BOTTOM HOLE
- = BOTTOM OF PRODUCTION ZONE
- ▲ = LANDING POINT
- LP = LANDING POINT
- BHL = BOTTOM HOLE
- BPZ = BOTTOM OF PRODUCTION ZONE

I, KEVIN J. MARTIN, A LICENSED PROFESSIONAL LAND SURVEYOR IN THE STATE OF COLORADO, DO HEREBY STATE TO PDC ENERGY, INC. THAT THE WELL LOCATION EXHIBIT SHOWN HEREON WAS PREPARED BY ME OR UNDER MY DIRECT SUPERVISION AND THE DRAWING SHOWN HEREON ACCURATELY DEPICTS THE PROPOSED LOCATION OF THE WELL. THIS EXHIBIT MEETS THE REQUIREMENTS OF A GIS LAND POSITION AS DEFINED BY SECTION 38-51-109.3 C.R.S. AND AS SUCH PER SECTION 38-51-109.3 C.R.S. CANNOT BE RELIED UPON TO DETERMINE OWNERSHIP.



KEVIN J. MARTIN, PLS 38580
COLORADO LICENSED PROFESSIONAL LAND SURVEYOR
FOR AND ON BEHALF OF P.F.S., LLC
d.b.a. ASCENT GEOMATICS SOLUTIONS
a.a.a.

WELL BYPASS STATE 01N TO BE
LOCATED 1854' FNL & 943' FWL

WELL BORE COORDINATES
(NAD83)

SURFACE LOCATION:
GROUND ELEVATION=4890'
LATITUDE:40.401749°N
LONGITUDE:104.828887°W

LANDING POINT:
LATITUDE:40.405832°N
LONGITUDE:104.832845°W

BOTTOM OF PRODUCTION ZONE
LATITUDE:40.405845°N
LONGITUDE:104.869132°W

BOTTOM HOLE:
LATITUDE:40.405844°N
LONGITUDE:104.869311°W

WELL NOTES:
BH LOCATION PROVIDED BY CLIENT.
LAND SURFACE USE - RANGELAND.
SEE LOCATION DRAWING FOR ADDITIONAL IMPROVEMENTS
WITHIN 2000'

PDOP=1.4
GPS OPERATOR: DOMINICK DAVIS



8620 Wolff Court
Westminster, CO 80031
(303) 928-7128
www.ascentgeomatics.com

FIELD DATE:

05-03-23

DRAWING DATE:

12-12-23

BY:

TRP

CHECKED:

AWJ

WELL NAME:

BYPASS STATE 01N

SURFACE LOCATION:

SW 1/4 NW 1/4 SEC. 18, T5N, R66W, 6TH P.M.

WELD COUNTY, COLORADO

PREPARED FOR:

