

# Interim Reclamation Inspection

Date: 01/12/2024

Operator: BISON IV OPERATING LLC - 10670

Location ID: 447898

Inspection Document #: 708200882

Weld County, CO

Dylan Edwardson  
Reclamation Specialist, ECMC



**COLORADO**  
Energy & Carbon Management  
Commission  
Department of Natural Resources

Inspection Photos  
Location Name: Anderson Facility 9-59-31 Pad  
Location ID: 447898



**Photo 1.** Former access road is predominantly weedy vegetation (e.g. kochia and russian thistle) and is not reflective of adjacent reference areas.



# Inspection Photos

Location Name: Anderson Facility 9-59-31 Pad

Location ID: 447898



**Photo 2.** Eastern interim areas are predominantly weedy vegetation. Additional reclamation activities are required.



## Inspection Photos

Location Name: Anderson Facility 9-59-31 Pad

Location ID: 447898



**Photo 3.** Northern interim areas are predominantly weedy vegetation. Additional reclamation activities are required



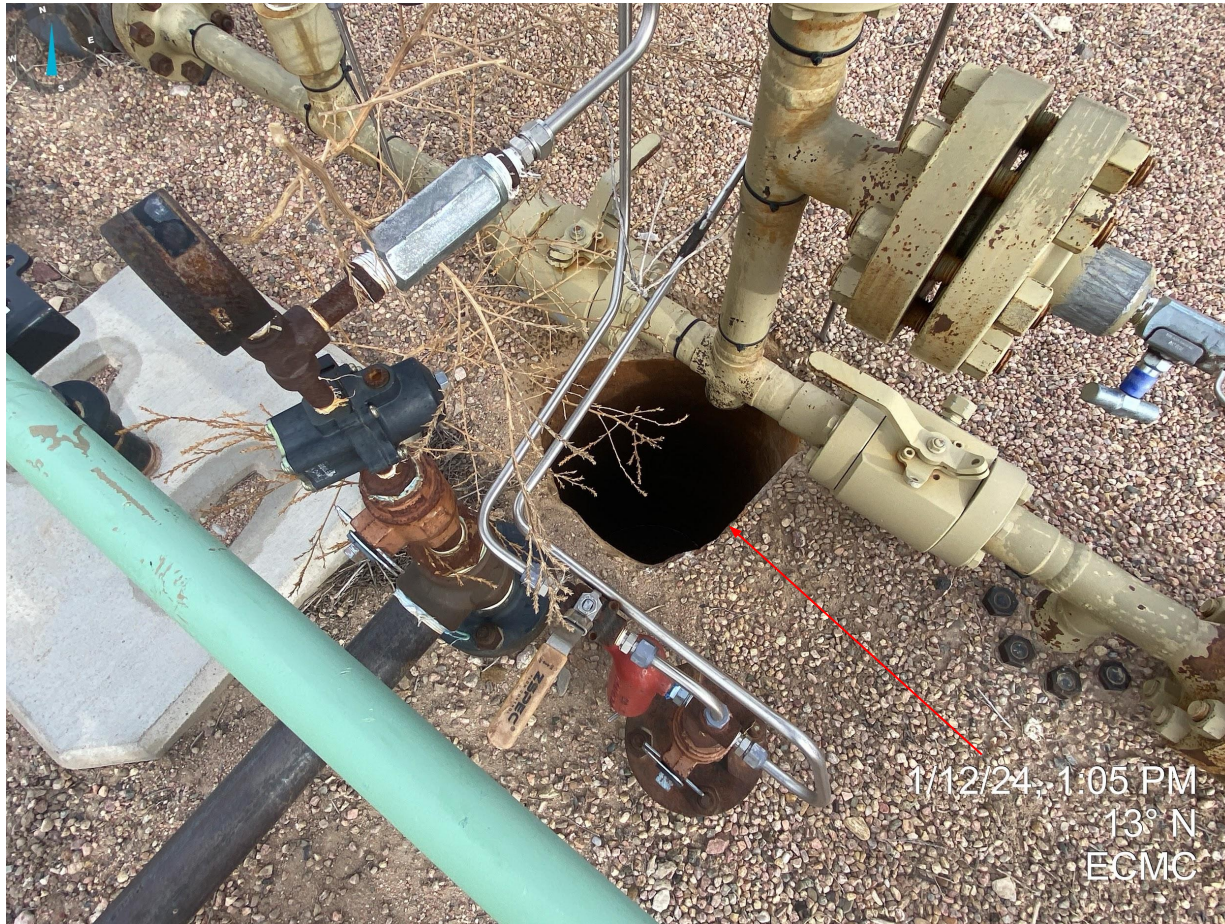
Inspection Photos  
Location Name: Anderson Facility 9-59-31 Pad  
Location ID: 447898



**Photo 4.** Emergency contact information is missing at well signs.



Inspection Photos  
Location Name: Anderson Facility 9-59-31 Pad  
Location ID: 447898



**Photo 5.** Opening/subsidence observed at well API #123-43618.



Inspection Photos  
Location Name: Anderson Facility 9-59-31 Pad  
Location ID: 447898

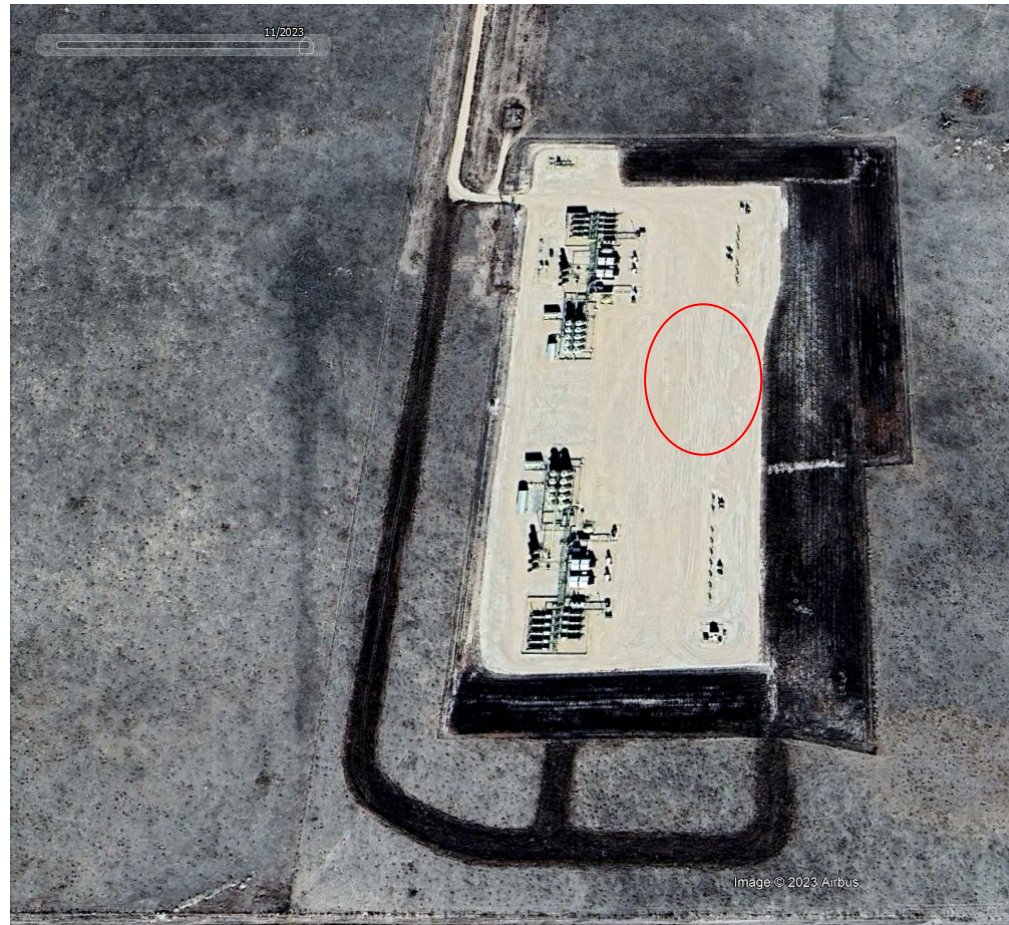


**Photo 6.** It doesn't appear that areas not needed for production activities have been reclaimed, illustrated by red polygon. See Photo 7 for additional.

# Inspection Photos

Location Name: Anderson Facility 9-59-31 Pad

Location ID: 447898



**Photo 7.** Google Earth aerial imagery (circa 11/2023) illustrating that areas not needed for production activities do not appear to have been reclaimed, highlighted with red circle. Approximately 1 acre has not been reclaimed.



## Inspection Photos

Location Name: Anderson Facility 9-59-31 Pad

Location ID: 447898



**Photo 8.** Former access road (south of location) is predominantly weedy vegetation (e.g. kochia and russian thistle) and is not reflective of adjacent reference areas.

## Inspection Photos

Location Name: Anderson Facility 9-59-31 Pad

Location ID: 447898



**Photo 9.** Eastern interim (south side of location) areas are predominantly weedy vegetation. Additional reclamation activities are required.



## Inspection Photos

Location Name: Anderson Facility 9-59-31 Pad

Location ID: 447898

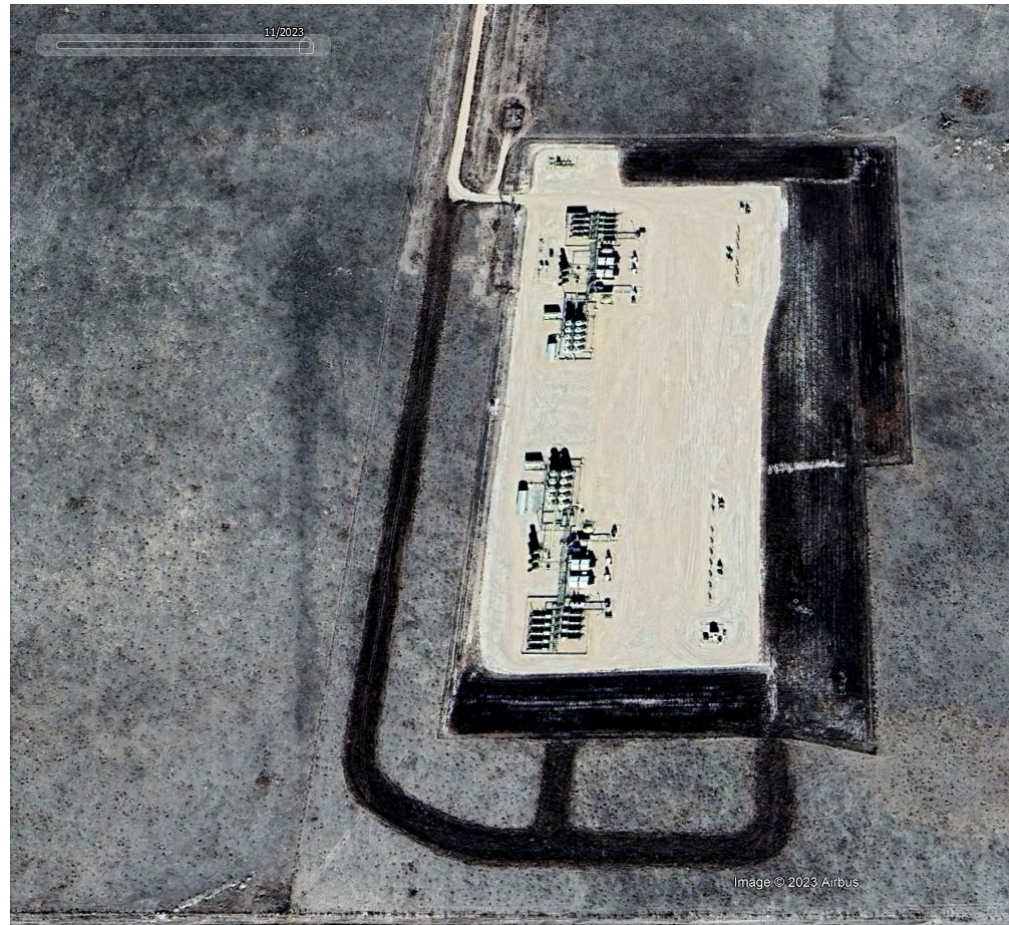


**Photo 10.** Topsoil stockpile is predominantly weedy vegetation. Additional reclamation activities are required.

## Inspection Photos

Location Name: Anderson Facility 9-59-31 Pad

Location ID: 447898



**Photo 11.** Google Earth aerial imagery (circa 11/2023) illustrating that darker areas/vegetation represents significant weed cover throughout the interim areas. Additional reclamation activities are required.