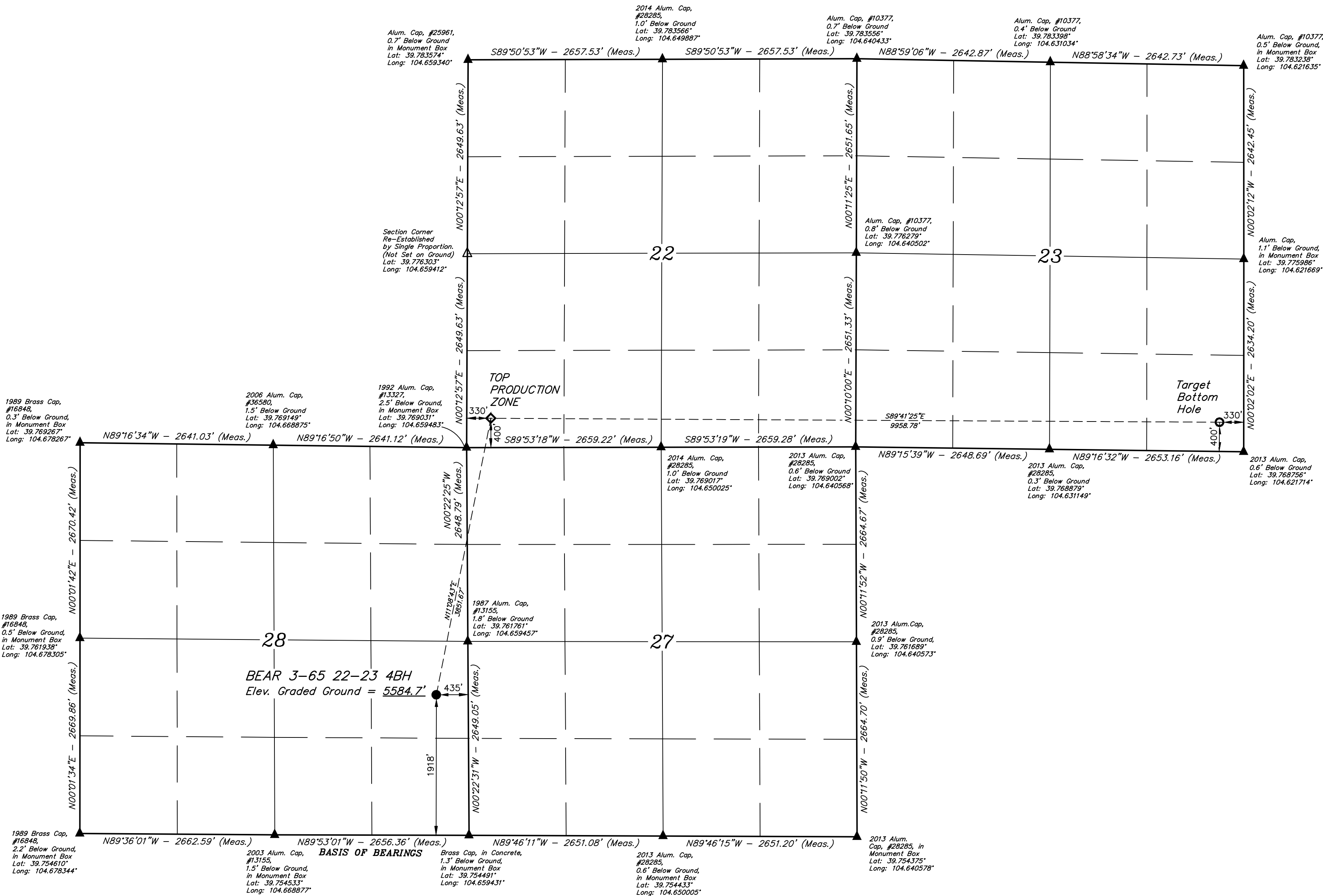
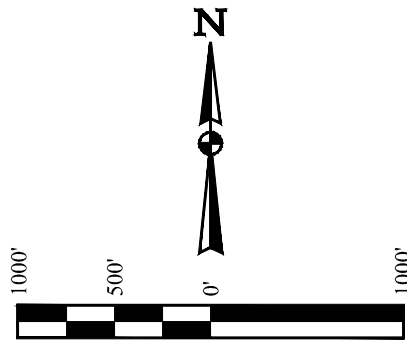


T3S, R65W, 6th P.M.

CRESTONE PEAK
RESOURCES OPERATING LLC
BEAR 3-65 22-23 4BH
NE 1/4 SE 1/4, SECTION 28, T3S, R65W, 6th P.M.
ADAMS COUNTY, COLORADO

BASIS OF ELEVATION
BENCHMARK: CITY OF AURORA BENCHMARK
3S6636NE003 BEING A 3" DIAMETER BRASS CAP
STAMPED "COA BM, 19-020B, E-090A" LOCATED ON
TOP OF THE SOUTH WALL AT THE SOUTHEAST
CORNER OF THE EAST 26TH AVENUE BRIDGE
CROSSING OVER E-470. AKA 19-020B
ELEVATION = 5521.54 (NAVD88)



- LEGEND:**
- = PROPOSED WELLHEAD.
 - ◆ = TOP PRODUCTION ZONE.
 - = TARGET BOTTOM HOLE.
 - ▲ = SECTION CORNERS LOCATED. (NAD 83)
 - △ = SECTION CORNERS RE-ESTABLISHED. (Not Set on Ground.) (NAD 83)

NOTE:
Distances referenced
on plat to section lines
are perpendicular.

NAD 83 (SURFACE HOLE LOCATION)	NAD 83 (TOP PRODUCTION ZONE)	NAD 83 (TARGET BOTTOM HOLE)
LATITUDE = 39°45'35.15" (39.759763°)	LATITUDE = 39°46'12.46" (39.770127°)	LATITUDE = 39°46'11.53" (39.769869°)
LONGITUDE = -104°39'39.59" (-104.660997°)	LONGITUDE = -104°39'29.87" (-104.658298°)	LONGITUDE = -104°37'22.37" (-104.622881°)
STATE PLANE NAD 83 (CO. NORTH)	STATE PLANE NAD 83 (CO. NORTH)	STATE PLANE NAD 83 (CO. NORTH)
N: 1156451.38' E: 3235874.11'	N: 1160233.64' E: 3236596.99'	N: 1160236.38' E: 3246553.29'

CERTIFICATION
THIS IS TO CERTIFY THAT THE ABOVE SURVEY WAS CONDUCTED IN ACCORDANCE WITH THE
NOTES OF ACTUAL SURVEYS MADE BY ME OR UNDER MY SUPERVISION
AND THAT THE SAME ARE TRUE AND CORRECT TO THE BEST OF MY
KNOWLEDGE AND BELIEF.

REGISTERED LAND SURVEYOR
REGISTRATION NO. 28285
STATE OF COLORADO
JUL 19 2023

REV: 1 10-06-23 L.K. (UPDATE SURFACE HOLE LOCATIONS)

PDOP = 1.5



UELS, LLC
Corporate Office * 85 South 200 East
Vernal, UT 84078 * (435) 789-1017

SURVEYED BY DALLAS NIELSEN, J.C. 06-28-23 SCALE
DRAWN BY L.M.W. 07-18-23 1" = 1000'

WELL LOCATION PLAT