

Operator: BONANZA CREEK ENERGY OPERATING COMPANY LLC

Location Name: North Platte I-24 Pad

Loc ID: 429060

Inspection: 713900195



Exhibit A



Exhibit B

CA: Tank labels illegible or missing. See inspection photos for details. Replace tank labels per Rule 605.

CA Resolution: Operator appropriately updated the tank labels to comply with Rule 605.

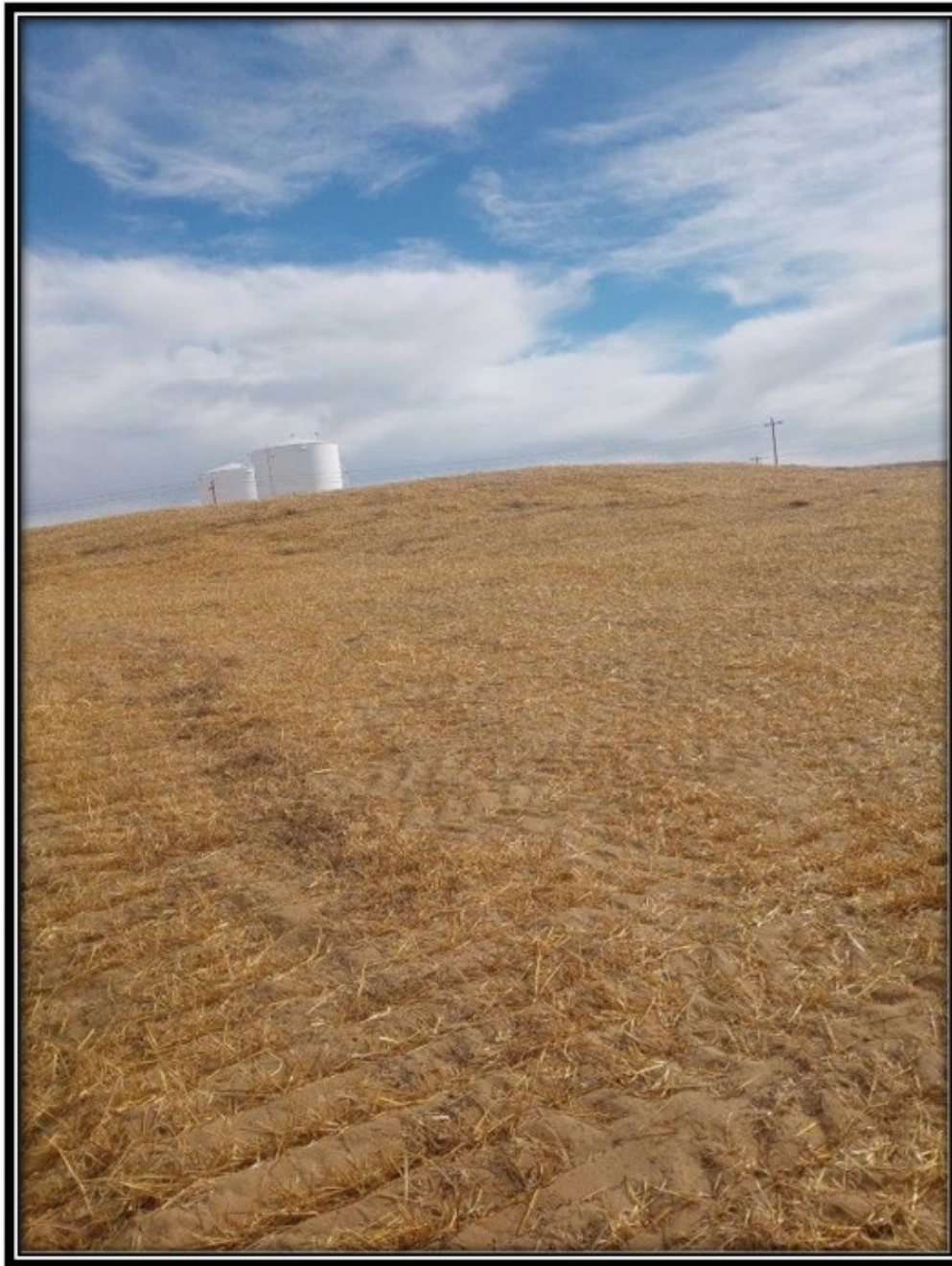


Exhibit A

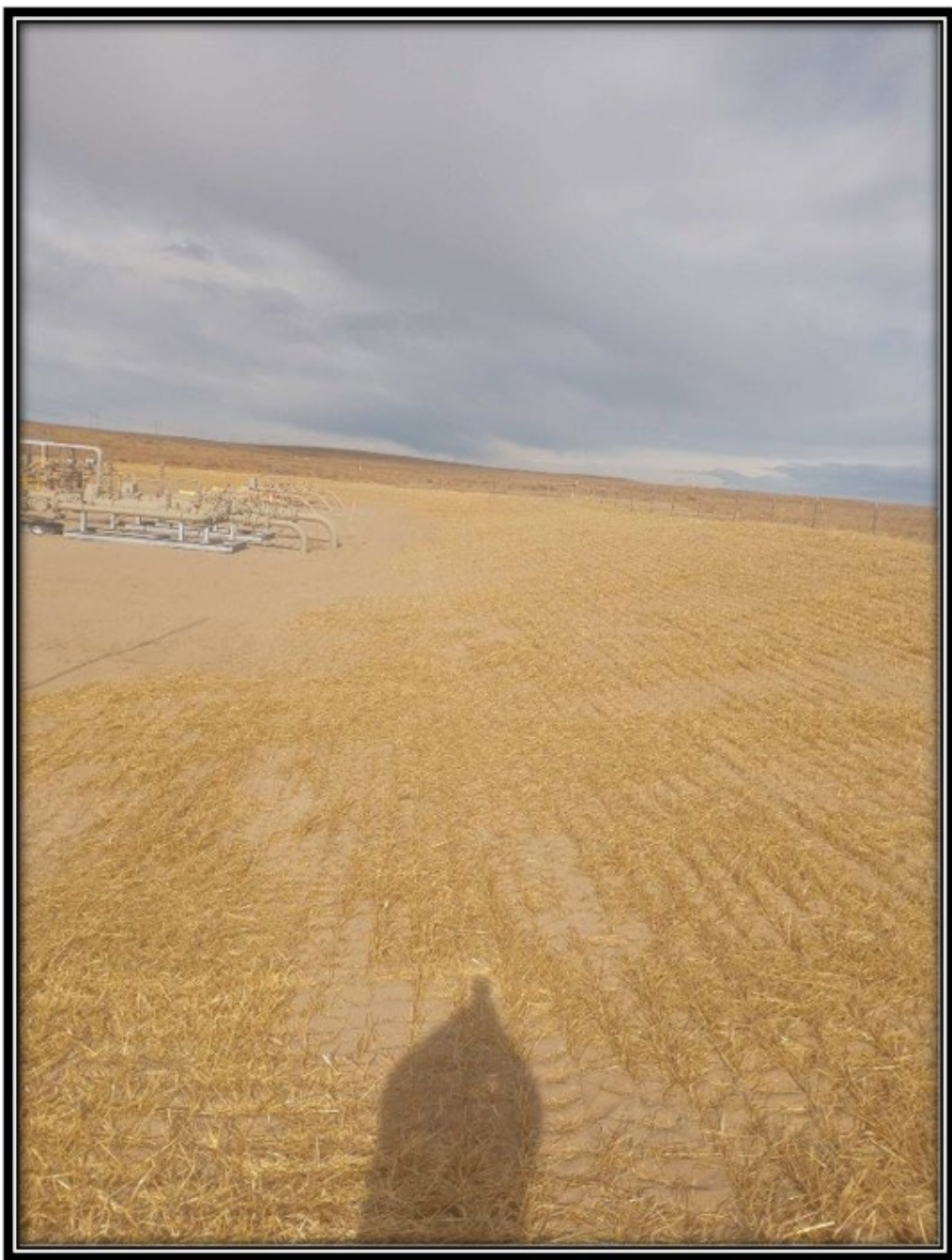


Exhibit B

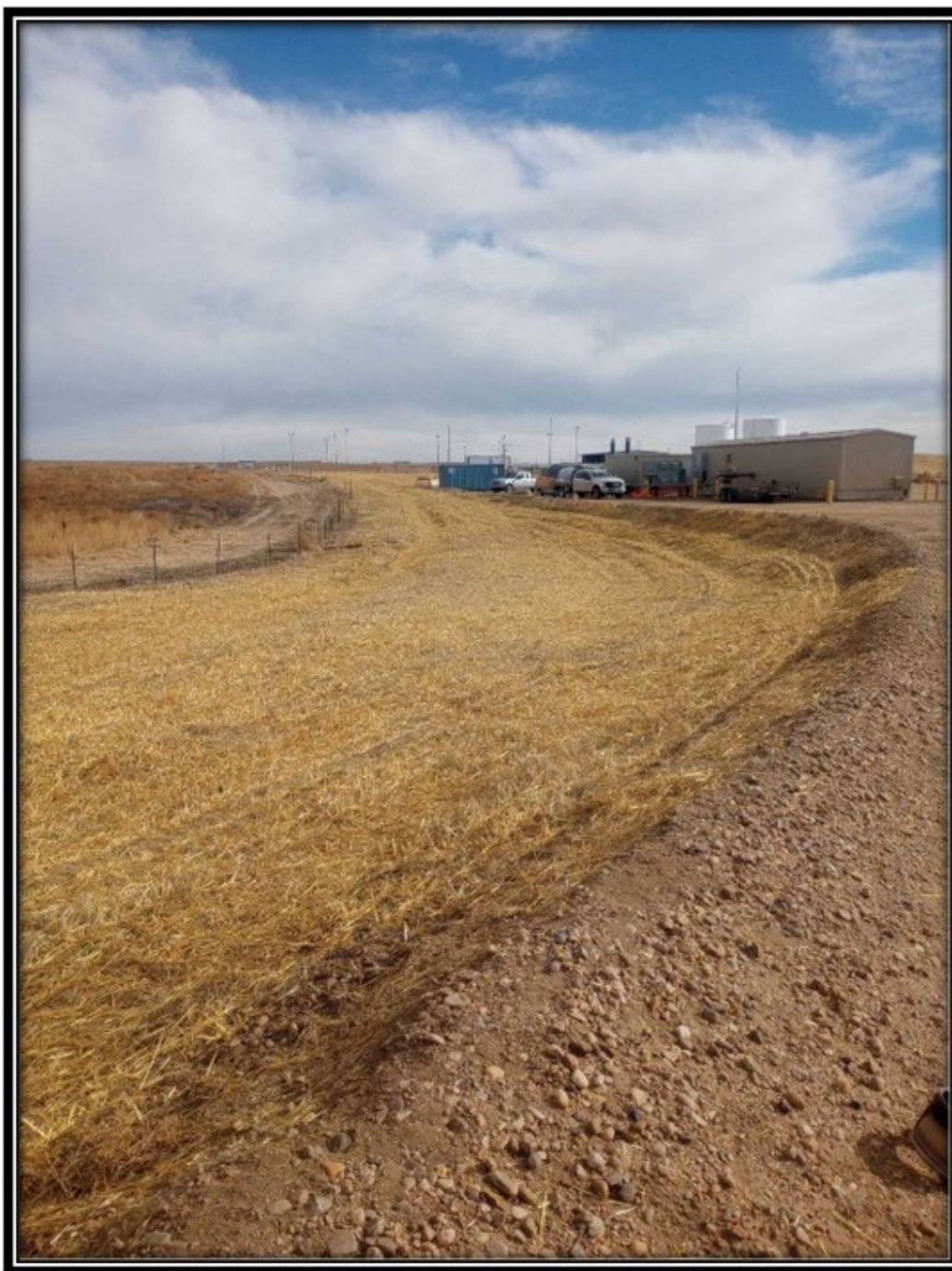


Exhibit C

CA: Weed debris in the form of tumbleweeds were observed along the entirety of the perimeter fence line and growing in the interim areas. Tumbleweeds are a troublesome annual non-native weed that easily breaks off at the stem. Operator failed to control and manage weeds to prevent weed waste and prevent the spread of seeds onto adjacent lands. Comply with Rule 606 to remove weed debris.

CA Resolution: Operator has appropriately addressed and cleared tumbleweeds and weed debris from the location to assist with keeping to location clean and preventing the spread of weeds. Operator will continue to monitor and manage weeds on location to comply with Rule 606.

CA: This location does not comply with Reclamation rules. Rule 1002.c. states all stockpiled soils shall be protected from degradation due to contamination, compaction and, to the extent practicable, from wind and water erosion during drilling and production operations. Best management practices to prevent weed establishment and to maintain soil microbial activity shall be implemented. Topsoil stockpile has significant weed cover- Russian thistle and Kochia- with no perennial vegetation that would compete with the weedy vegetation and generally work to decrease weed growth. Best management practices to prevent weed establishment shall be implemented. Control, Date manage, and prevent weedy, annual vegetation on all topsoil stockpiles. If reseeding is an option for long-term protection and stabilization of topsoil, then the next favorable seeding opportunity shall be conducted.

CA Resolution: Operator has appropriately addressed the identified issues pertaining to the spread of weeds and weed debris throughout the location. The area has now been properly cleared and reseeded to assist with establishing vegetation.

CA: It appears the operator has reduced the disturbance to the areas only needed for production operations. However, interim areas are dominated by Russian thistle and bare soil throughout the well location, the northern area of the well location is growing Colorado noxious weed list C species Puncturevine, and the topsoil stockpile is dominated by Russian thistle and bare soil with evidence of vehicle tracking throughout the interim areas. Perform reclamation in accordance with Rule 1003. Establish vegetation with total perennial, non-invasive uniform plant cover of at least eighty (80) percent of reference area levels. Use a seed mixture requested by the surface owner, or a mixture prescribed by the local county NRCS. Ensure erosion controls are implemented to stabilize the seeded soil and continue to monitor and manage this site until the location meets Rule 1003 standards, including stormwater and weed management.

CA Resolution: Operator adequately addressed identified areas of issue to assist with restoring and revegetating the location appropriately comply with Rule 1003.