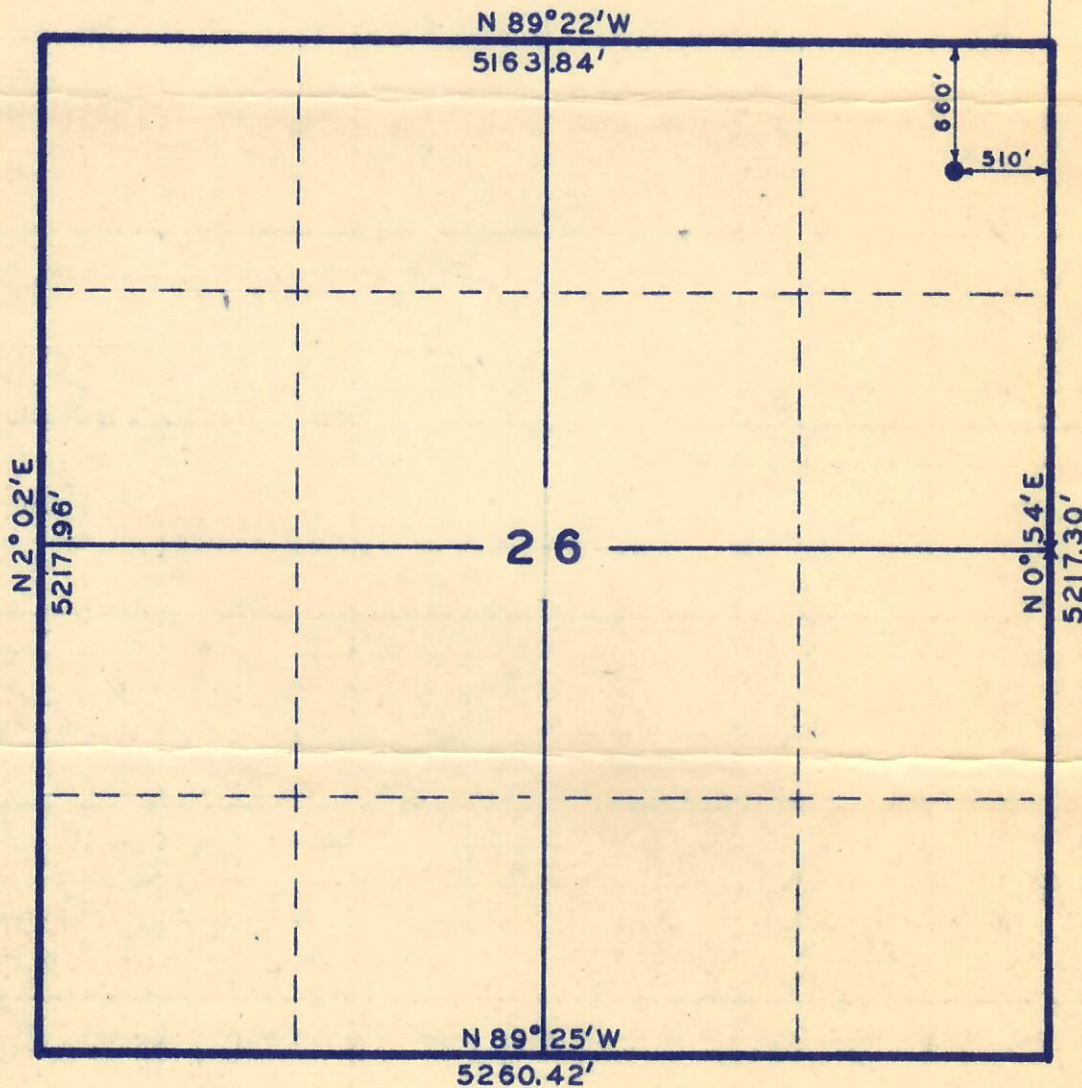




RECEIVED
AUG 22 1960
OIL & GAS
CONSERVATION COMMISSION

T 9N, R90W, 6TH PM

X EAST 1/4 CORNER
SEC. 23.



X= Corners located

Scale: 1"=1000'

By: ROSS CONSTRUCTION CO.
Vernal, Utah



PARTY
Gene Stewart
Lanny Taylor

WEATHER Clear-Windy

SURVEY
GULF OIL CORPORATION
MADERA NO.2 LOCATED AS SHOWN IN NE
1/4, NE 1/4, SEC. 26 T9N, R90W, 6TH PM.
MOFFAT COUNTY, COLORADO.

DATE 8/16/60
REFERENCES
US GLO Township Plat
Approved 1912
FILE GULF