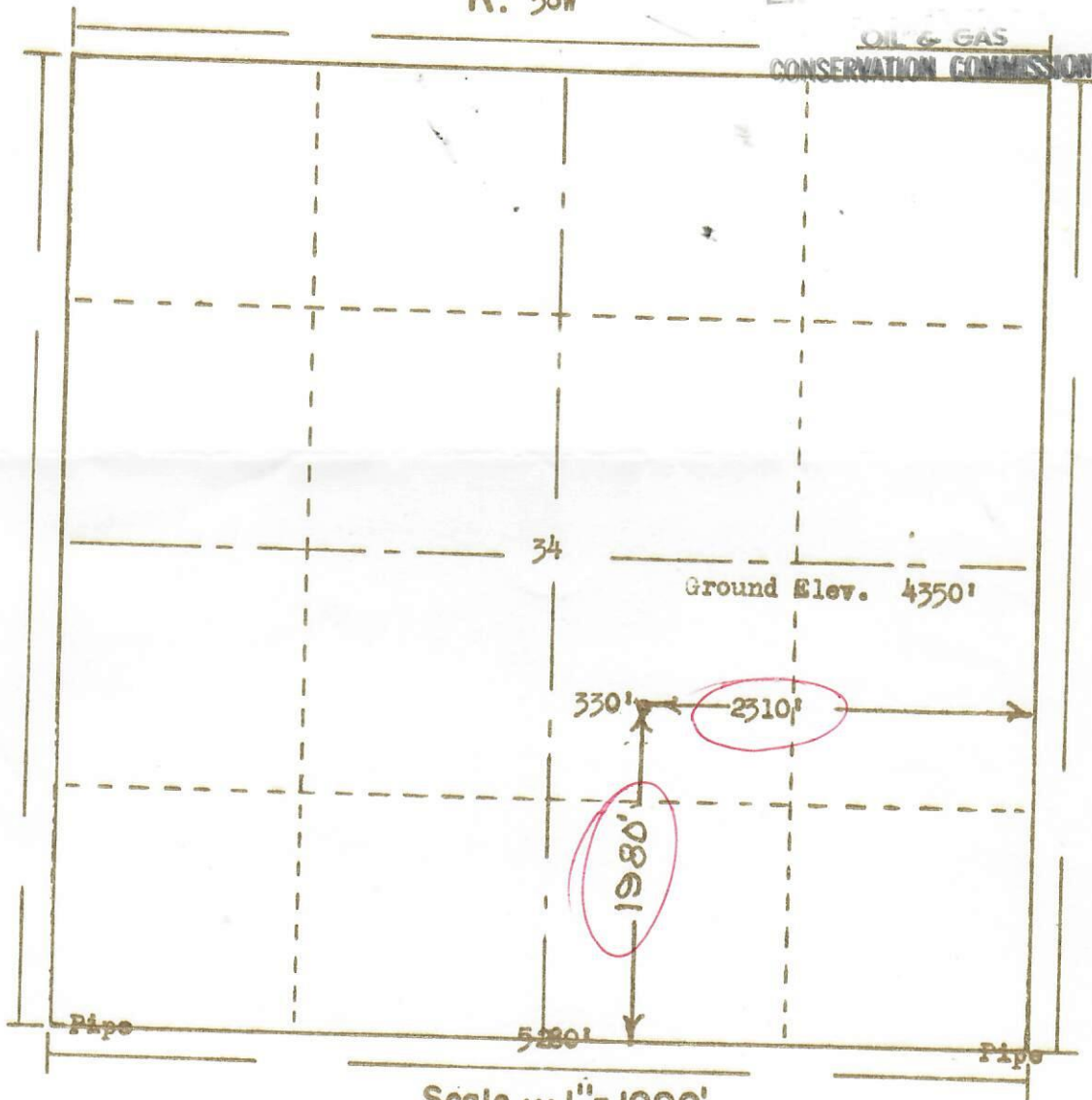


RECEIVED  
JUL 20 1966

R. 56W

OIL & GAS  
CONSERVATION COMMISSION



T.  
2  
N

Scale ... 1" = 1000'

Powers Surveyors, Inc. of Denver, Colorado  
has in accordance with a request from Mr. Harrison  
for Cardinal Petroleum determined the  
Location of No. 2 Peterson  
to be 330' West of CNW SE Section 34 Township 2N  
Range 56W of the 6th Principal Meridian  
Morgan County, Colorado

I hereby certify that this plat is an  
accurate representation of a correct  
survey showing the location of



00105026

Date: 7-16-66

*B. G. Holloway*  
Licensed Land Surveyor No. 2853  
State of Colorado