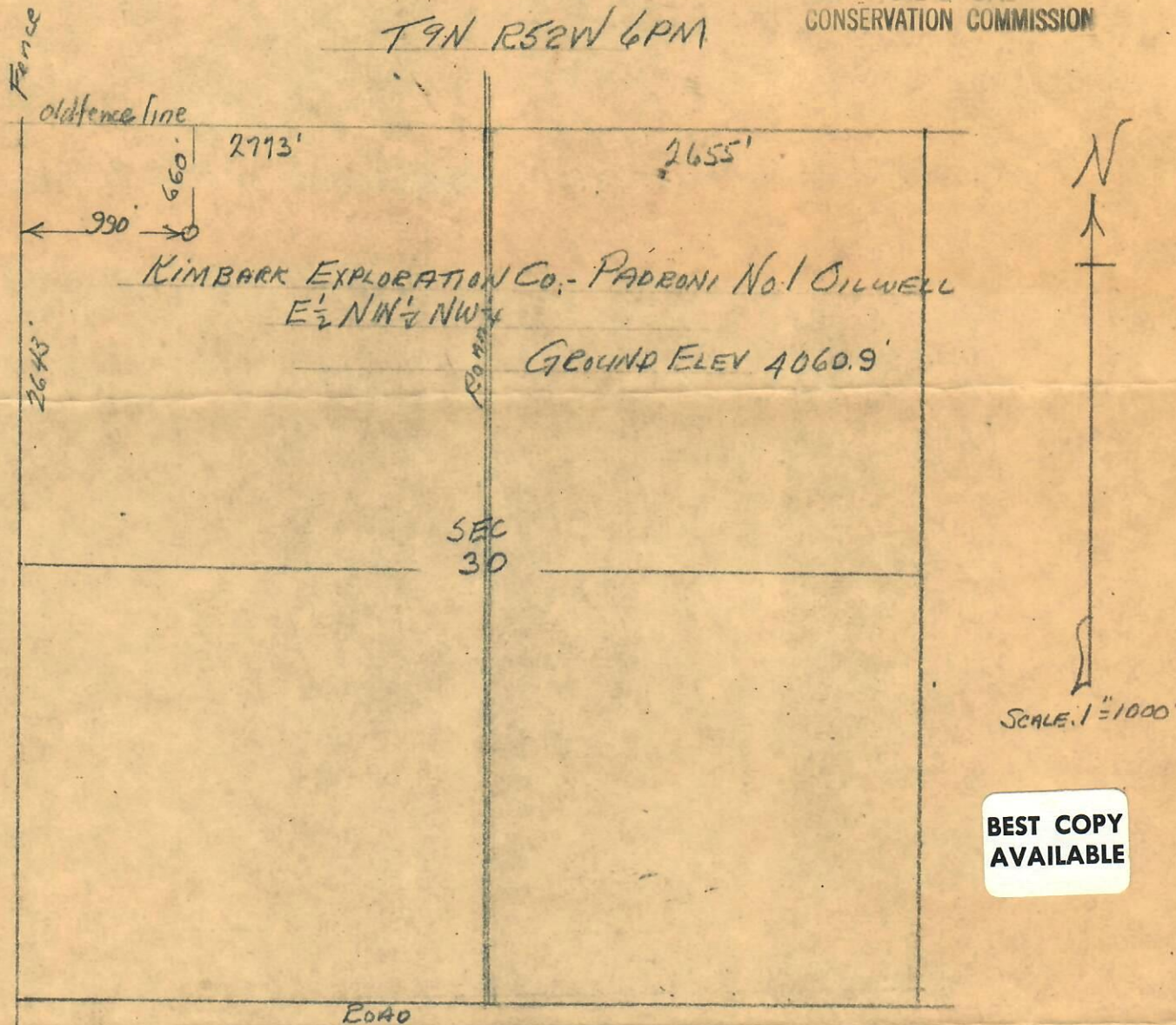




CERTIFICATE OF SURVEY
for
Kimbark Exploration Co.
Logan County, Colorado

DIGITIZED
MAR 22 1966

OIL & GAS
CONSERVATION COMMISSION



I hereby certify that the above plat is an accurate representation of a correct survey showing the location of Kimbark Exploration Co. - Padroni No. 1 Oilwell in E 1/2 N 1/2 NW 1/4 Sec. 30 T9N R52W 6PM. The elevation of the ground at the stake is 4060.9 feet above sea level from U.S.G.S. bench Mark.

Fort Morgan, Colorado
March 20, 1966

Levin Albom
Registered Professional Engineer
State of Colorado

66 90