



00264215



INDUCTION-GUARD LOG

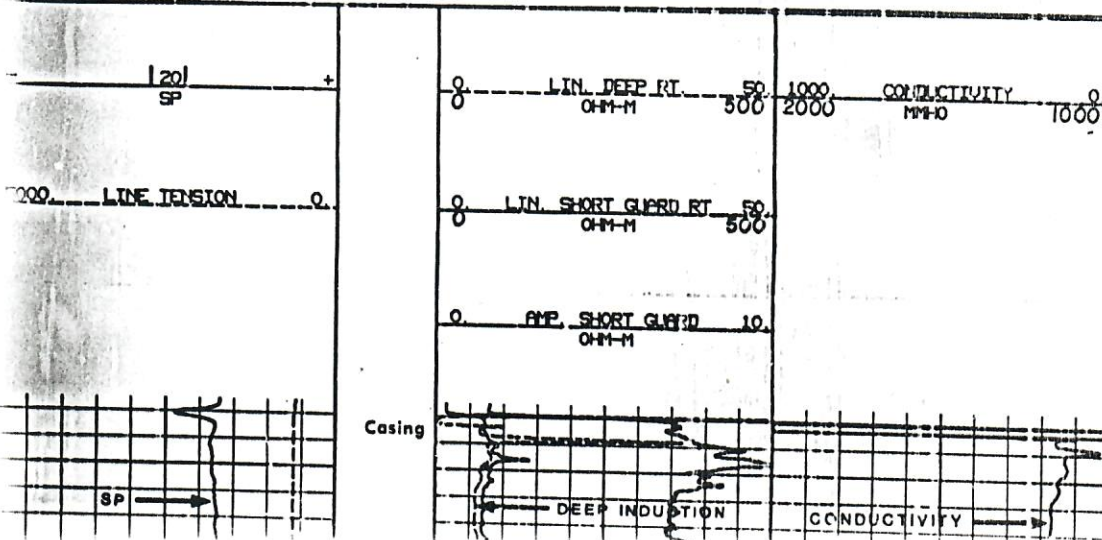
COMPANY M & J OIL COMPANY	
WELL BIANCO #41-31	
FIELD WILDCAT	
County LOGAN State COLO.	
Sec. 31 Twp. 9N Rge. 52N	
Location C-NE/NE	
COUNTY LOGAN STATE COLORADO	
Other Services: CUL CAL	
Permanent Datum GROUND LEVEL Elev. 4100'	
Log Measured From KELLY BUSHING Elev. 4105'	
Drilling Measured From KELLY BUSHING D.F. 4100'	
Date 1-19-84	
Run No. ONE	
Depth-Driller 5210'	
Depth-Welex 5205'	
Btm. Log Inter. 5203'	
Top Log Inter. 3750'	
Casing-Driller 8 5/8 @ 138'	
Casing-Welex 135'	
Bit Size 7 7/8"	
Type Fluid in Hole GEL-CHEM	
Dens. Visc. 9.9 1.64	
pH 1 Fluid Loss 8.5 1.8 ml	
Source of Sample FLOWLINE-CIRCULATED	
R _m @ Meas. Temp. 3.2 @ 94 °F	
R _m @ Meas. Temp. 2.8 @ 94 °F	
R _m @ Meas. Temp. 3.5 @ 94 °F	
Source R _m MEASURED	
R _m @ BHT 2.1 @ 144 °F	
Time Since Circ. 2 HOURS	
Max. Rec. Temp. 144 °F @ TD	
Equip. Location 2885 BRIGHTON	
Recorded By L. BEITER	
Witnessed By J. H. McMillin	

Fold Here

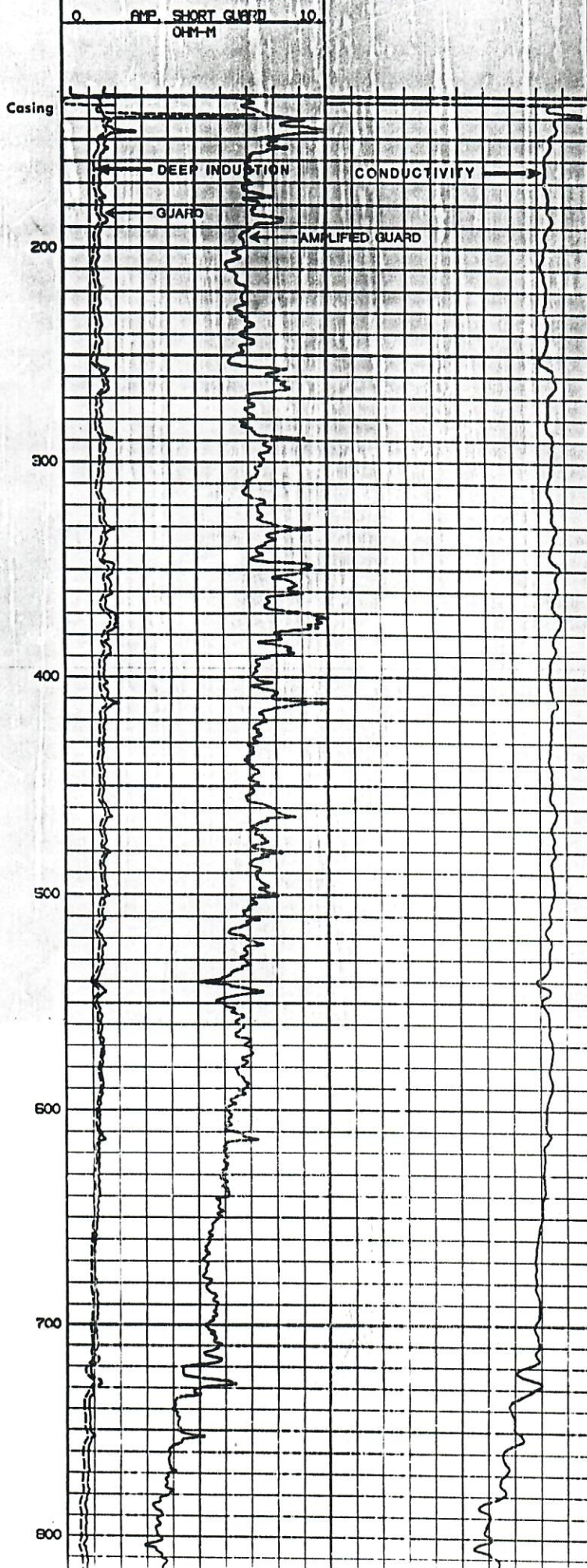
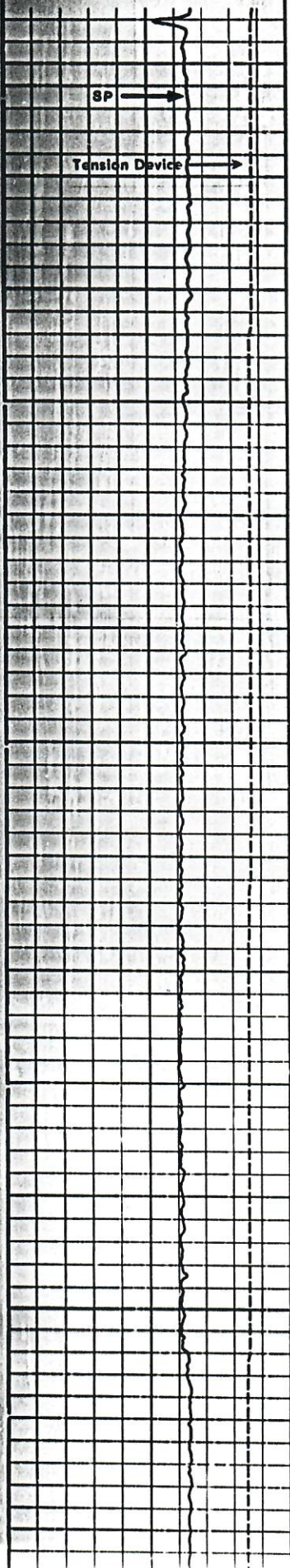
Service Ticket No. 138850 Remarks: J.T.S. PROGRAM VERSION 1.5

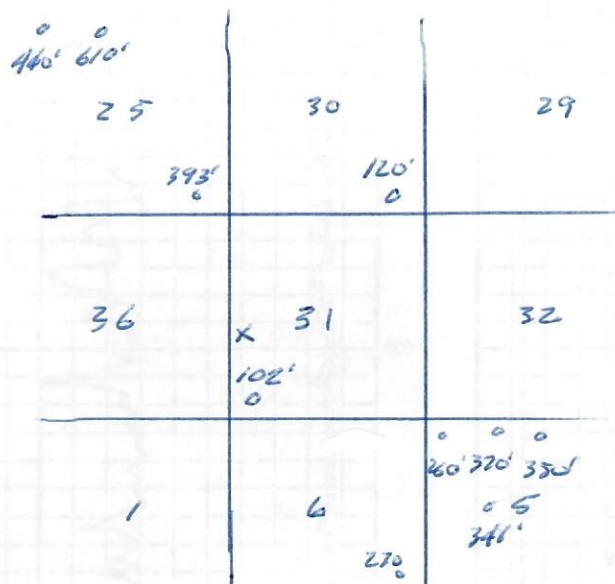
Change in Mud Type or Additional Samples				SCALE CHANGES			
Date	Sample No.	Type Log	Depth	Scale Up Hole	Scale Down Hole		
	Depth-Driller						
	Type Fluid in Hole						
	Dens. Visc.						
	Fluid Loss						
	Source of Sample						
	@ Meas. Temp.	@ °F	@ °F	Run No.	Tool Type and No.	Pad Type	Tool Position
	@ Meas. Temp.	@ °F	@ °F	ONE	196-WHT		1'S.O.
	@ Meas. Temp.	@ °F	@ °F		#91905		CENT
	Source: R _m R _m						
	@ BHT	2.1 @ 144 °F	@ @ °F				
	BHT	1.8 @ 144 °F	@ @ °F				
	BHT	2.3 @ 144 °F	@ @ °F				

Welex does not guarantee the accuracy of any interpretation of log data, conversion of log data to physical rock parameters, or recommendations which may be given by Welex personnel or which may appear on the log or in any other form. Any user of such data, interpretations, conclusions, or recommendations agrees that Welex is not responsible, except where due to gross negligence or willful misconduct for any loss, damages, or expenses resulting from the use thereof.



5773M 125-440





WELLS IN SECTION 31
 HAVE 130' SFC

	QTR	QTR	SEC	TWNS	RANGE	PM	NAME	DEPTH	TPERF	BPERF
A	SE	SW	26	090N	0520W	S	PEDRONI & GIACOMINI INC	350		
B	SE	SW	26	090N	0520W	S	PEDRONI & GIACOMINI INC	150		
C	SE	SW	26	090N	0520W	S	PEDRONI & GIACOMINI INC	18		
D	NW	NE	27	090N	0520W	S	PEDRONI & GIACOMINI INC	220		
E	SE	NE	27	090N	0520W	S	PEDRONI & GIACOMINI INC	220		
F	SW	NW	27	090N	0520W	S	SANDERS W' N	241		
G	NE	SE	27	090N	0520W	S	KLOBERDANZ FULTON			
H	NW	SE	27	090N	0520W	S	DESOTO BROS INC	52		
I	SE	SE	27	090N	0520W	S	DESOTO EUGENE	64		
J	SW	SW	27	090N	0520W	S	PEDRONI HEIRS PARTNERSHIP	125		
K	SW	SW	27	090N	0520W	S	PEDRONI HEIRS PARTNERSHIP	342	180	342
L	SE	SE	30	090N	0520W	S	HARLEY VERN R. ESTATE	120		
M	SW	SW	31	090N	0520W	S	BOLLISH & SON	61		
N	SW	SW	31	090N	0520W	S	BOLLISH & SON	102	65	102
O	SW	SW	31	090N	0520W	S	DON BOLLISH & SON			
P		SW	32	090N	0520W	S	MUNDELL HOMER	36		
Q	SW	SW	32	090N	0520W	S	MUNDELL HOMER	43	20	43
R	NW	SW	33	090N	0520W	S	HARLEY VERN R. ESTATE	320		
S	SW	SW	34	090N	0520W	S	PEDRONI HEIRS PARTNERSHIP	260		
T	SW	SW	34	090N	0520W	S	PEDRONI HEIRS PARTNERSHIP	320	170	300

Letter=Choice | F10=Mark 1 | PgUp/PgDn=±20 | UpAr/DnAr =±1 | Esc=Quit

	QTR	QTR	SEC	TWNS	RANGE	PM	NAME	DEPTH	TPERF	BPERF
A			05	080N	0520W	S	LININGER L E			
B	NE	NE	05	080N	0520W	S	KNUTSEN LOWELL	224		
C	NE	NE	05	080N	0520W	S	BIANCO JOE	30		
D	NW	NE	05	080N	0520W	S	DREFKE BILL	350		
E	SE	NE	05	080N	0520W	S	JACKSON J E			
F	SE	NE	05	080N	0520W	S	ROGERS R			
G	SE	NE	05	080N	0520W	S	JACKSON JAMES E.	51		
H		NW	05	080N	0520W	S	FISCHER MICHAEL	32		
I	NE	NW	05	080N	0520W	S	PRAST R W			
J	NE	NW	05	080N	0520W	S	CARLSON CHAD A & JENNIFER M	370		
K	NW	NW	05	080N	0520W	S	FISCHER MICHAEL	50	20	50
L	NW	NW	05	080N	0520W	S	BEAVER LESLIE	260		
M	NW	NW	05	080N	0520W	S	FISCHER M M	65		
N	NW	NW	05	080N	0520W	S	STERLING MACHINE AND SPE	60		
O	NW	NW	05	080N	0520W	S	YOST ALLEN	45		
P	NW	NW	05	080N	0520W	S	DONNELLY ROBT. W	70		
Q	SE	NW	05	080N	0520W	S	KNUDSON LOWELL H.	341		
R	SW	NW	05	080N	0520W	S	KNUDSON L			
S	SW	NW	05	080N	0520W	S	FERRELL O J	80		
T	SW	NW	05	080N	0520W	S	KNUDSEN FERN	230		

Letter=Choice | F10=Mark 1 | PgUp/PgDn=±20 | UpAr/DnAr =±1 | Esc=Quit

	QTR	QTR	SEC	TWNS	RANGE	PM	NAME	DEPTH	TPERF	BPERF
A	NE	NW	25	090N	0530W	S	SKAER ENTERPRISES	610	490	610
B	NW	NW	25	090N	0530W	S	BOLLISH & SON RANCH	440		
C	SE	SE	25	090N	0530W	S	STANLEY L T	393		
D	SE	NE	26	090N	0530W	S	WHITTIER W E COMPANY	355		
E	SW	SW	26	090N	0530W	S	CAREY HARVEY	456		
F	NE	NW	30	090N	0530W	S	SHELL OIL CO	702		
G	SW	NE	31	090N	0530W	S	GREEN BROTHERS	45		
H	NW	SE	31	090N	0530W	S	MONROE ALBERTA			
I		N	32	090N	0530W	S	LOCK DAN			
J	NW	NE	33	090N	0530W	S	HECKEL PETE	310		
K	SE	SW	33	090N	0530W	S	TETSELL A H	45		
L	SW	SE	34	090N	0530W	S	JACKSON P L			
M	SE	SE	35	090N	0530W	S	BORNHOFT FEEDYARDS INC.			
N	SE	SE	35	090N	0530W	S	BORNHOFF MELVIN F.			
O	SE	SE	35	090N	0530W	S	BORNHOFT MELVIN F	138	118	138
P	SE	SW	35	090N	0530W	S	MUNDELL H			
Q	SE	SW	35	090N	0530W	S	MUNDELL HOMER	420		
R	SW	SW	35	090N	0530W	S	SIMMS LARRY	397	282	397
S	SW	SW	35	090N	0530W	S	SIMMS GRIFFITH	260		
T	SE	NE	01	090S	0530W	S	ARRIBA TOWN OF	100		

Letter=Choice | F10=Mark 1 | PgUp/PgDn=±20 | UpAr/DnAr =±1 | Esc=Quit