

WELL PAD LOCATION PICTURES
ROAN ANGEL 5-23HZ

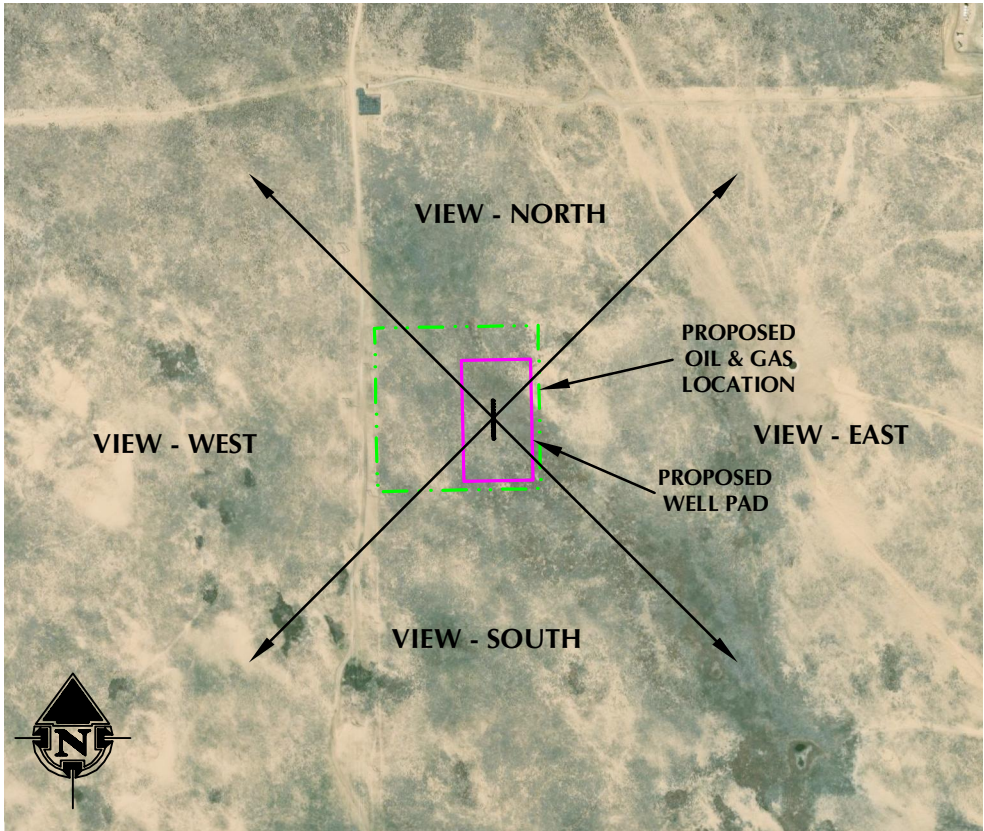
W1/2 NW1/4 SECTION 23, TOWNSHIP 3 NORTH, RANGE 63 WEST, 6TH P.M. WELD COUNTY, COLORADO



LOCATION PICTURE OF ROAN ANGEL 5-23HZ WELL PAD - CAMERA VIEW NORTH



LOCATION PICTURE OF ROAN ANGEL 5-23HZ WELL PAD - CAMERA VIEW SOUTH



VIEW - OVERHEAD
AERIAL IMAGERY COURTESY OF NAIP
(2021)



LOCATION PICTURE OF ROAN ANGEL 5-23HZ WELL PAD - CAMERA VIEW EAST



LOCATION PICTURE OF ROAN ANGEL 5-23HZ WELL PAD - CAMERA VIEW WEST

K:\ANDAKO\2017\2017_197_CERVO_RANCH_T4N_R63W\DWG\08_ROAN_ANGEL.dwg, 3/8/2023 11:58:10 AM, seven



LOVELAND OFFICE
6706 North Franklin Avenue
Loveland, Colorado 80538
Phone 970-776-4331

SHERIDAN OFFICE
1095 Saberton Avenue
Sheridan, Wyoming 82801
Phone 307-674-0609

CONSULTING, LLC

**Kerr-McGee Oil &
Gas Onshore LP**
1099 18th Street
Denver, Colorado 80202

DATE SURVEYED: 2/14/23
DATE: 3/6/23
DRAFTER: CWB
REVISED: 3/8/23

DATA SOURCES:
-AERIAL IMAGERY COURTESY OF NAIP.