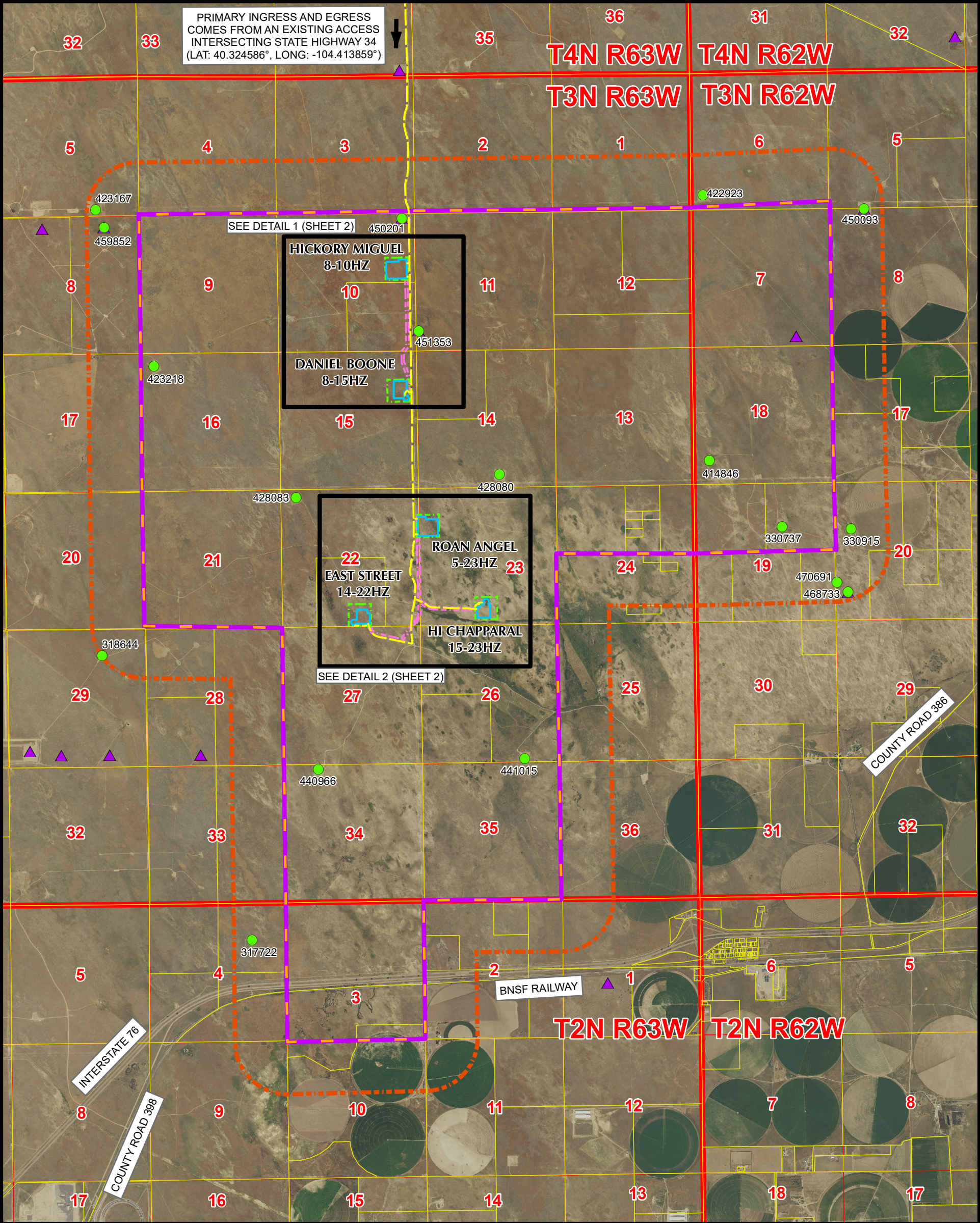


COLT OGDGDP RELATED LOCATION & FLOWLINE MAP  
HICKORY MIQUEL 8-10HZ, DANIEL BOONE 8-15HZ,  
ROAN ANGEL 5-23HZ, EAST STREET 14-22HZ, HI CHAPPARAL 15-23HZ  
SECTIONS 10, 15, 22 & 23, TOWNSHIP 3 NORTH, RANGE 63 WEST, 6TH P.M., WELD COUNTY, COLORADO



Legend

- |   |  |
|---|--|
| PROPOSED ACCESS ROAD                    | ACTIVE LOCATION                              |
| PROPOSED FLOWLINE CORRIDOR              | VISIBLE LOCATION ON AERIAL NOT IN COGCC GIS  |
| PROPOSED WORKING PAD SURFACE            | PENDING LOCATION PERMIT (FORM 2A)            |
| PROPOSED OIL & GAS LOCATIONS            | APPROVED LOCATION PERMIT (FORM 2A)           |
| PROPOSED OGDGDP BOUNDARY                | APPROVED WELL PERMIT (FORM 2)                |
| 2000' BUFFER - PROPOSED OGDGDP BOUNDARY | PENDING WELL PERMIT (FORM 2)                 |
| PROPOSED MINERAL BOUNDARY               | WELD OIL AND GAS LOCATION ASSESSMENT (WOGLA) |
|   | CLOSED PIT                                   |
|   | TANK BATTERY                                 |
|   | PARCEL BOUNDARY                              |

**Kerr-McGee Oil & Gas Onshore LP**  
1099 18th Street  
Denver, Colorado 80202



**609 Consulting, LLC**

**LOVELAND OFFICE**  
6706 North Franklin Avenue  
Loveland, Colorado 80538  
Phone 970-776-4331

**SHERIDAN OFFICE**  
1095 Saberton Avenue  
Sheridan, Wyoming 82801  
Phone 307-674-0609

N

NAD83 CO-Nft

1" = 4,000ft

0 2,000 4,000

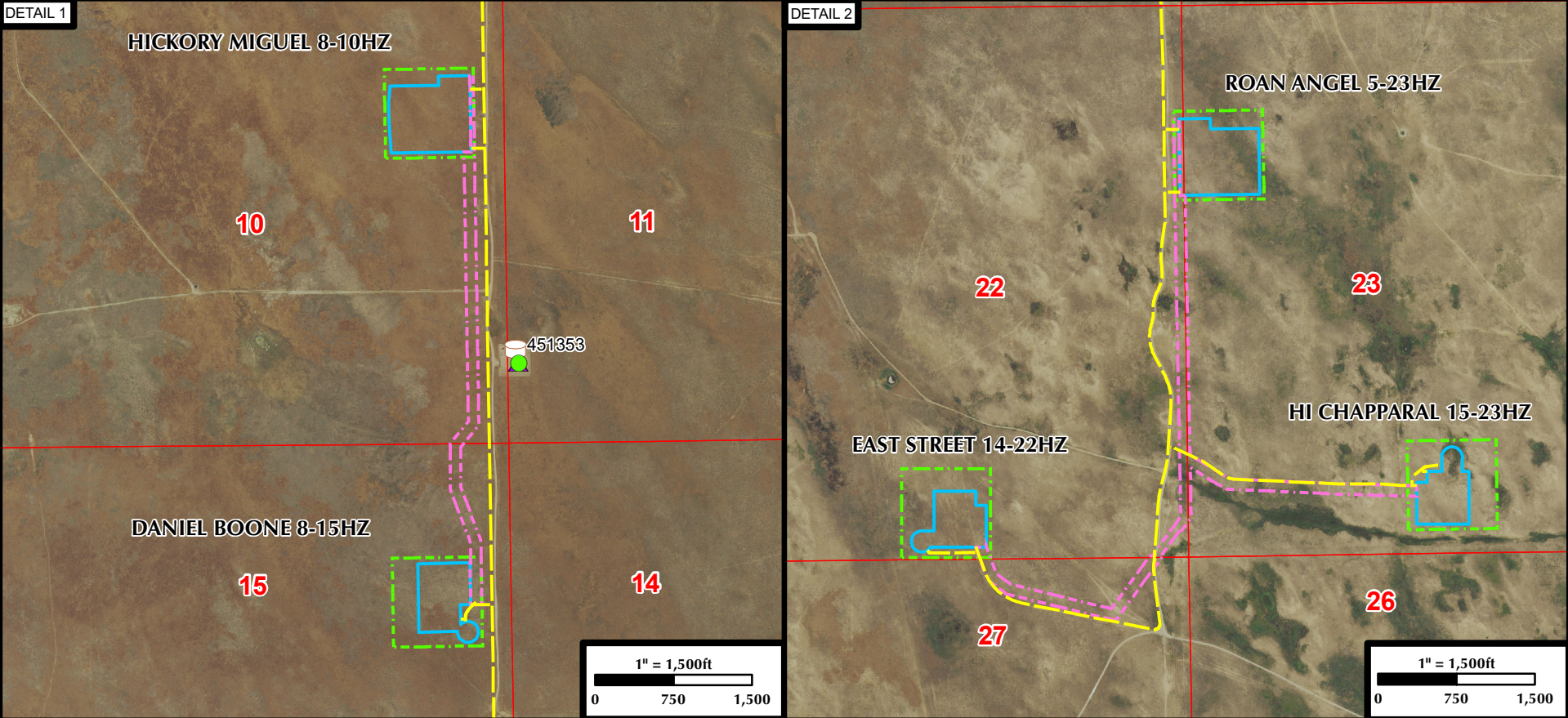
Drawn by: AK  
Revised:  
Date: 24 Mar 2023  
Date:

1 Sheet:  
of 2



COLT OGD P RELATED LOCATION & FLOWLINE MAP  
HICKORY MIQUEL 8-10HZ, DANIEL BOONE 8-15HZ,  
ROAN ANGEL 5-23HZ, EAST STREET 14-22HZ, HI CHAPPARAL 15-23HZ  
SECTIONS 10, 15, 22 & 23, TOWNSHIP 3 NORTH, RANGE 63 WEST, 6TH P.M., WELD COUNTY, COLORADO

LOCATION ID	LOCATION NAME	LOCATION NUMBER	OPERATOR NAME
317722	STATE-62N63W	4CNE	NOBLE ENERGY INC
318644	CHAMPLIN 366 AMOCO C UT-63N63W	29NWNE	NOBLE ENERGY INC
330737	HSR-CERVI STATE-63N62W	19SWNE	KERR MCGEE OIL & GAS ONSHORE LP
330915	LOST CREEK O'BRIEN-63N62W	20SWNW	O'BRIEN ENERGY RESOURCES CORP
414846	STATE	13-18	KERR MCGEE OIL & GAS ONSHORE LP
422923	FRENCH LAKE 3-62-6	1B	BONANZA CREEK ENERGY OPERATING COMPANY LLC
423167	GUTTERSEN	27N-5HZ	NOBLE ENERGY INC
423218	FRENCH LAKE 3-63-16	1A	BONANZA CREEK ENERGY OPERATING COMPANY LLC
428080	FRENCH LAKE 3-63-14	3H	BONANZA CREEK ENERGY OPERATING COMPANY LLC
428083	FRENCH LAKE 3-63-22	1H	BONANZA CREEK ENERGY OPERATING COMPANY LLC
440966	CERVI	03N-63W-34	KERR MCGEE OIL & GAS ONSHORE LP
441015	CERVI	03N-63W-26	KERR MCGEE OIL & GAS ONSHORE LP
450093	LOST CREEK	03N-62W-08-NW	VERDAD RESOURCES LLC
450201	LONGHORN	U-10 PAD	BONANZA CREEK ENERGY OPERATING COMPANY LLC
451353	LONGHORN	14-11	BONANZA CREEK ENERGY OPERATING COMPANY LLC
459852	DD08-02	PAD	NOBLE ENERGY INC
468733	BLACK MOUNTAIN	2024-2031	VERDAD RESOURCES LLC
470691	LOST CREEK-63N62W	20NWSW	O'BRIEN ENERGY RESOURCES CORP



Legend

- PROPOSED ACCESS ROAD
- PROPOSED FLOWLINE CORRIDOR
- PROPOSED WORKING PAD SURFACE
- PROPOSED OIL & GAS LOCATIONS
- ACTIVE LOCATION
- WELD OIL AND GAS LOCATION ASSESSMENT (WOGLA)
- TANK BATTERY

Kerr-McGee Oil &  
Gas Onshore LP  
1099 18th Street  
Denver, Colorado 80202

609

Consulting, LLC

LOVELAND OFFICE  
6706 North Franklin Avenue  
Loveland, Colorado 80538  
Phone 970-776-4331

SHERIDAN OFFICE  
1095 Saberton Avenue  
Sheridan, Wyoming 82801  
Phone 307-674-0609

N

NAD83 CO-Nft

Drawn by: AK

Date: 24 Mar 2023

Revised:

Date:

2

Sheet: of 2