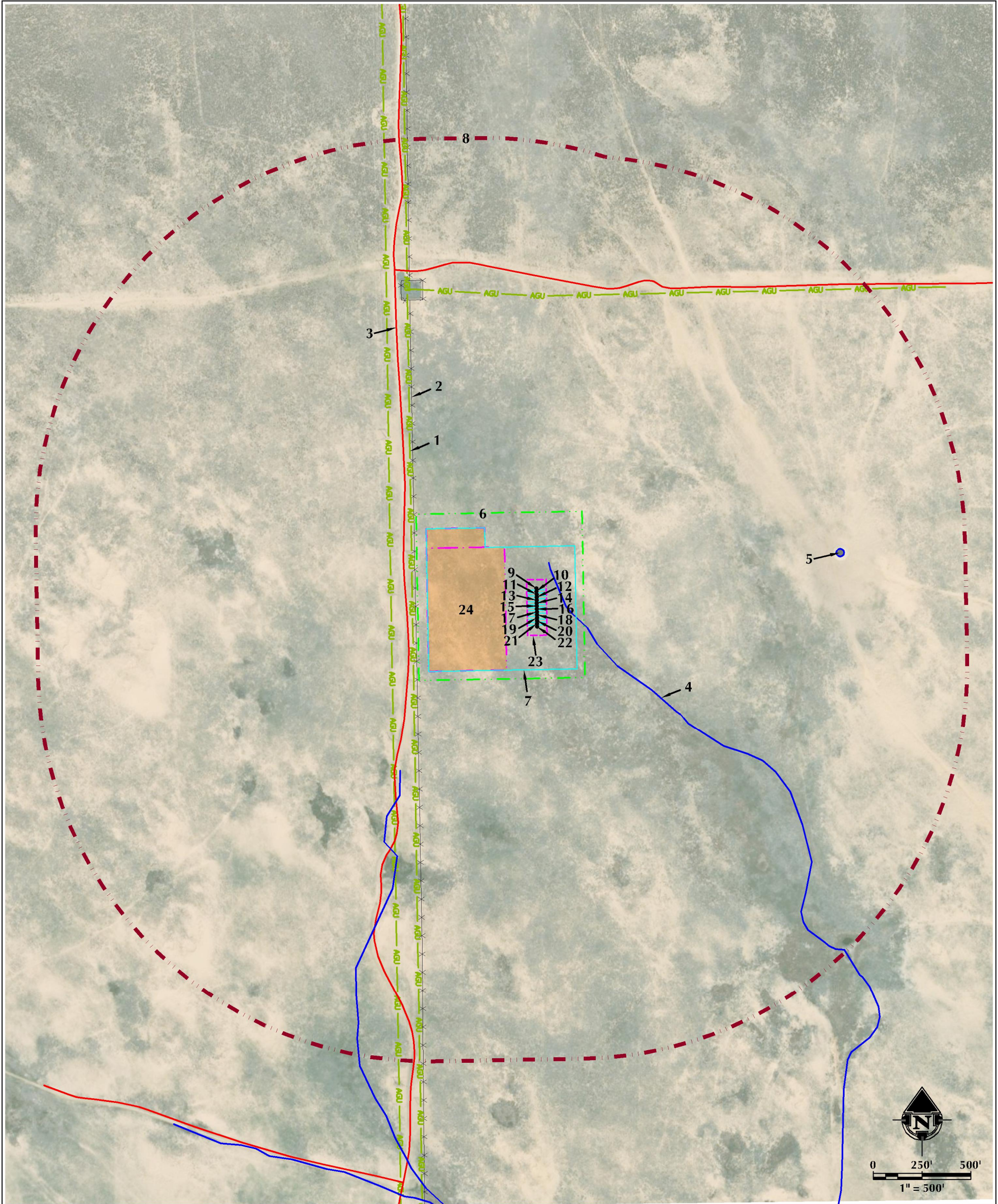


LOCATION DRAWING
ROAN ANGEL 5-23HZ
HORIZONTAL MULTI-WELL PAD

W1/2 NW1/4 SECTION 23, TOWNSHIP 3 NORTH, RANGE 63 WEST, 6TH P.M., WELD COUNTY, COLORADO



- | | | |
|---|---------------------------------------|---|
| 1. ABOVE GROUND UTILITY LINES ARE ±77' W, ±186' W AND ±1202' N. | 10. PROPOSED WELL: ROAN ANGEL 23-2HZ | 21. PROPOSED WELL: ROAN ANGEL 23-13HZ |
| 2. EXISTING FENCES ARE ±60' W AND ±1174' N. | 11. PROPOSED WELL: ROAN ANGEL 23-3HZ | 22. PROPOSED WELL: ROAN ANGEL 23-14HZ |
| 3. EXISTING PRIVATE ROADS ARE ±100' W AND ±1319' N. | 12. PROPOSED WELL: ROAN ANGEL 23-4HZ | 23. PUMP JACK OPERATIONS AREA |
| 4. EXISTING DRAINAGES ARE ±0' (DETERMINED NOT TO BE PRESENT, PER QUANDARY) AND ±531' S. | 13. PROPOSED WELL: ROAN ANGEL 23-5HZ | 24. PROPOSED ROAN ANGEL 5-23HZ FACILITY |
| 5. EXISTING STOCK TANK IS ±1339' E. | 14. PROPOSED WELL: ROAN ANGEL 23-6HZ | |
| 6. PROPOSED OIL & GAS LOCATION | 15. PROPOSED WELL: ROAN ANGEL 23-7HZ | |
| 7. WORKING PAD SURFACE | 16. PROPOSED WELL: ROAN ANGEL 23-8HZ | |
| 8. 2000' WORKING PAD SURFACE BUFFER | 17. PROPOSED WELL: ROAN ANGEL 23-9HZ | |
| 9. PROPOSED WELL: ROAN ANGEL 23-1HZ | 18. PROPOSED WELL: ROAN ANGEL 23-10HZ | |
| | 19. PROPOSED WELL: ROAN ANGEL 23-11HZ | |
| | 20. PROPOSED WELL: ROAN ANGEL 23-12HZ | |

LEGEND <div><div><div><div><div></div></div><div>EXISTING WELL</div></div><div><div><div></div></div><div>PROPOSED WELL</div></div><div><div><div></div></div><div>WATER WELL</div></div><div><div><div></div></div><div>PUBLIC ROAD</div></div><div><div><div></div></div><div>PRIVATE ROAD</div></div><div><div><div></div></div><div>EXISTING FENCE</div></div></div><div><div><div></div></div><div>WORKING PAD SURFACE</div></div><div><div><div></div></div><div>2000' WORKING PAD SURFACE BUFFER</div></div><div><div><div></div></div><div>PROPOSED OIL & GAS LOCATION</div></div><div><div><div></div></div><div>PUMP JACK AREA</div></div><div><div><div></div></div><div>PROPOSED FACILITY</div></div><div><div><div></div></div><div>DITCH/CANAL/DRAINAGE</div></div><div><div><div></div></div><div>POND</div></div></div> <div><div><div></div></div><div>AGU</div></div> <div><div><div></div></div><div>ABOVE GROUND UTILITY LINE</div></div> <div><div><div></div></div><div>EPL</div></div> <div><div><div></div></div><div>EXISTING PIPELINE</div></div> <div><div><div></div></div><div>EXISTING FACILITY</div></div> <div><div><div></div></div><div>EXISTING BUILDING</div></div> <div><div><div></div></div><div>RESIDENTIAL BUILDING UNIT</div></div> <div><div><div></div></div><div>NON-RESIDENTIAL BUILDING UNIT</div></div> <div><div><div></div></div><div>TEMPORARY EQUIPMENT AREA</div></div>
--

ALL MEASUREMENTS ARE MADE FROM NEAREST EDGE OF THE WORKING PAD SURFACE

<div>LOVELAND OFFICE 6706 South Franklin Avenue Loveland, Colorado 80538 Phone: 970-776-4331</div> <div>SHERIDAN OFFICE 1095 Saberton Avenue Sheridan, Wyoming 82801 Phone: 307-674-6069</div>	DATE SURVEYED: 2/14/23 DATE: 3/6/23 DRAFTER: CWB REVISED: 3/8/23	DATA SOURCES & NOTES: - AERIAL COURTESY OF NAIP. - WATER WELLS COURTESY OF COLORADO DIVISION OF WATER RESOURCES. - MANY FEATURES ON THIS MAP COME FROM PUBLICLY AVAILABLE DATA AND FEATURES LYING OUTSIDE THE SURFACE PROPERTY MAY HAVE BEEN OBTAINED FROM AERIAL IMAGERY. THE ACCURACY AND COMPLETENESS OF SAID DATA HAS NOT BEEN VERIFIED BY 609 CONSULTING, LLC. EXISTING CONDITIONS MAY DIFFER FROM WHAT IS SHOWN.	SURFACE USE: RANGELAND NEAREST BUILDING UNIT: 5280'+ SE PREPARED FOR: Kerr-McGee Oil & Gas Onshore LP
--	---	---	---

K:\AMD\AR02017\2017_197_CERM_RANCH_14H_B63WWDWG\08_R001_ANGEL_V08_R001_ANGEL.dwg, 3/8/2023 12:03:06 PM, eleven