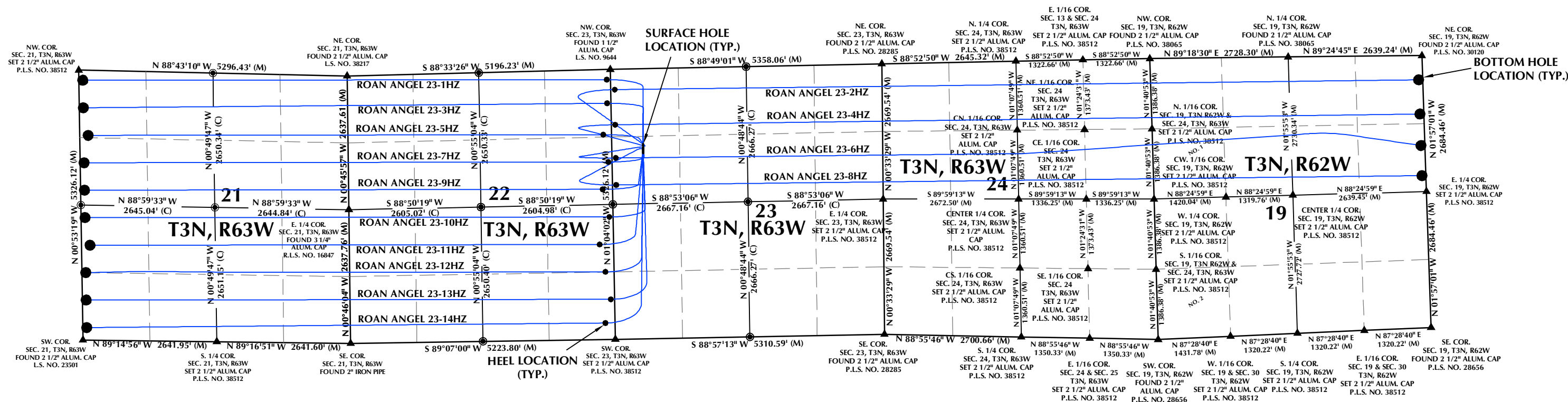
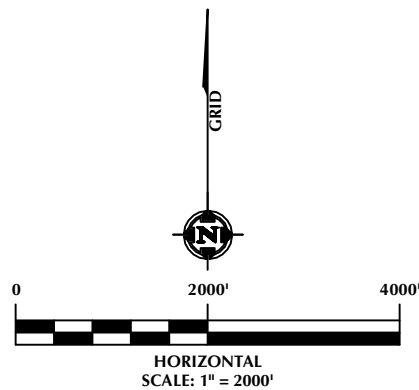


DIRECTIONAL WELL PLAT (COGCC) / MULTI-WELL PLAN (OGED)
SECTION 19, T3N, R62W & SECTIONS 21, 22, 23 & 24, T3N, R63W



- NOTES:
- ▲ INDICATES SECTION CORNER.
 - INDICATES CALCULATED CORNER.
 - BASIS OF BEARINGS DERIVED FROM COLORADO COORDINATE SYSTEM OF 1983, NORTH ZONE.
 - ALL MEASURED DISTANCES ARE GRID.
 - COMBINED SCALE FACTOR: .99973272 CALCULATED FROM THE NW. CORNER OF SECTION 23, T3N, R63W.
 - WELL FOOTAGES ARE MEASURED AT RIGHT ANGLES TO THE SECTION LINES.



LOVELAND OFFICE
6706 North Franklin Avenue
Loveland, Colorado 80538
Phone 970-776-4331

SHERIDAN OFFICE
1095 Saberton Avenue
Sheridan, Wyoming 82801
Phone 307-674-0609

**Kerr-McGee Oil &
Gas Onshore LP**
1099 18th Street
Denver, Colorado 80202

WELL PAD - ROAN ANGEL 5-23HZ

DIRECTIONAL WELL PLAT (COGCC) /
MULTI-WELL PLAN (OGED)
ROAN ANGEL 23-1HZ, ROAN ANGEL 23-2HZ,
ROAN ANGEL 23-3HZ, ROAN ANGEL 23-4HZ,
ROAN ANGEL 23-5HZ, ROAN ANGEL 23-6HZ,
ROAN ANGEL 23-7HZ, ROAN ANGEL 23-8HZ,
ROAN ANGEL 23-9HZ, ROAN ANGEL 23-10HZ,
ROAN ANGEL 23-11HZ, ROAN ANGEL 23-12HZ,
ROAN ANGEL 23-13HZ & ROAN ANGEL 23-14HZ
LOCATED IN SECTION 19, T3N, R62W &
SECTIONS 21, 22, 23 & 24, T3N, R63W, 6TH P.M.
WELD COUNTY, COLORADO

DRAFTED BY:	SJM	CHECKED BY:	RKF	SHEET NO:
DATE DRAFTED:	3/10/23	DATE SURVEYED:	2/14/23	1A
REVISED:	3/14/23	FILE NAME:	17-197	1A OF 1

DIRECTIONAL WELL PLAT (COGCC) / MULTI-WELL PLAN (OGED)
SECTION 19, T3N, R62W & SECTIONS 21, 22, 23 & 24, T3N, R63W

WELL NOTES:

ROAN ANGEL 23-1HZ
SURFACE HOLE LOCATION: 1472' FNL, 618' FWL (SEC. 23)
HEEL LOCATION: 200' FNL, 74' FEL (SEC. 22)
BOTTOM HOLE LOCATION: 200' FNL, 75' FWL (SEC. 21)

ROAN ANGEL 23-2HZ
SURFACE HOLE LOCATION: 1487' FNL, 618' FWL (SEC. 23)
HEEL LOCATION: 400' FNL, 79' FWL (SEC. 23)
BOTTOM HOLE LOCATION: 479' FNL, 75' FEL (SEC. 19)

ROAN ANGEL 23-3HZ
SURFACE HOLE LOCATION: 1502' FNL, 618' FWL (SEC. 23)
HEEL LOCATION: 667' FNL, 76' FEL (SEC. 22)
BOTTOM HOLE LOCATION: 743' FNL, 75' FWL (SEC. 21)

ROAN ANGEL 23-4HZ
SURFACE HOLE LOCATION: 1517' FNL, 618' FWL (SEC. 23)
HEEL LOCATION: 1094' FNL, 75' FWL (SEC. 23)
BOTTOM HOLE LOCATION: 1154' FNL, 75' FEL (SEC. 19)

ROAN ANGEL 23-5HZ
SURFACE HOLE LOCATION: 1532' FNL, 618' FWL (SEC. 23)
HEEL LOCATION: 1284' FNL, 165' FEL (SEC. 22)
BOTTOM HOLE LOCATION: 1285' FNL, 165' FWL (SEC. 21)

ROAN ANGEL 23-6HZ
SURFACE HOLE LOCATION: 1547' FNL, 618' FWL (SEC. 23)
HEEL LOCATION: 1749' FNL, 74' FWL (SEC. 23)
BOTTOM HOLE LOCATION: 1775' FNL, 74' FEL (SEC. 19)

ROAN ANGEL 23-7HZ
SURFACE HOLE LOCATION: 1562' FNL, 618' FWL (SEC. 23)
HEEL LOCATION: 1826' FNL, 75' FEL (SEC. 22)
BOTTOM HOLE LOCATION: 1827' FNL, 75' FWL (SEC. 21)

ROAN ANGEL 23-8HZ
SURFACE HOLE LOCATION: 1577' FNL, 618' FWL (SEC. 23)
HEEL LOCATION: 2283' FNL, 73' FWL (SEC. 23)
BOTTOM HOLE LOCATION: 2370' FNL, 75' FEL (SEC. 19)

ROAN ANGEL 23-9HZ
SURFACE HOLE LOCATION: 1592' FNL, 618' FWL (SEC. 23)
HEEL LOCATION: 2362' FNL, 196' FEL (SEC. 22)
BOTTOM HOLE LOCATION: 2369' FNL, 75' FWL (SEC. 21)

ROAN ANGEL 23-10HZ
SURFACE HOLE LOCATION: 1607' FNL, 618' FWL (SEC. 23)
HEEL LOCATION: 2415' FSL, 75' FEL (SEC. 22)
BOTTOM HOLE LOCATION: 2412' FSL, 74' FWL (SEC. 21)

ROAN ANGEL 23-11HZ
SURFACE HOLE LOCATION: 1622' FNL, 618' FWL (SEC. 23)
HEEL LOCATION: 1872' FSL, 277' FEL (SEC. 22)
BOTTOM HOLE LOCATION: 1868' FSL, 165' FWL (SEC. 21)

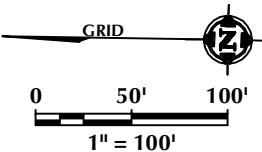
ROAN ANGEL 23-12HZ
SURFACE HOLE LOCATION: 1637' FNL, 618' FWL (SEC. 23)
HEEL LOCATION: 1331' FSL, 171' FEL (SEC. 22)
BOTTOM HOLE LOCATION: 1327' FSL, 75' FWL (SEC. 21)

ROAN ANGEL 23-13HZ
SURFACE HOLE LOCATION: 1652' FNL, 618' FWL (SEC. 23)
HEEL LOCATION: 788' FSL, 75' FEL (SEC. 22)
BOTTOM HOLE LOCATION: 785' FSL, 74' FWL (SEC. 21)

ROAN ANGEL 23-14HZ
SURFACE HOLE LOCATION: 1667' FNL, 618' FWL (SEC. 23)
HEEL LOCATION: 321' FSL, 190' FEL (SEC. 22)
BOTTOM HOLE LOCATION: 242' FSL, 75' FWL (SEC. 21)

WELL HEAD SPACING DETAIL

ROAN ANGEL 23-1HZ
ROAN ANGEL 23-2HZ
ROAN ANGEL 23-3HZ
ROAN ANGEL 23-4HZ
ROAN ANGEL 23-5HZ
ROAN ANGEL 23-6HZ
ROAN ANGEL 23-7HZ
ROAN ANGEL 23-8HZ
ROAN ANGEL 23-9HZ
ROAN ANGEL 23-10HZ
ROAN ANGEL 23-11HZ
ROAN ANGEL 23-12HZ
ROAN ANGEL 23-13HZ
ROAN ANGEL 23-14HZ



LOVELAND OFFICE
6706 North Franklin Avenue
Loveland, Colorado 80538
Phone 970-776-4331

SHERIDAN OFFICE
1095 Saberton Avenue
Sheridan, Wyoming 82801
Phone 307-674-0609

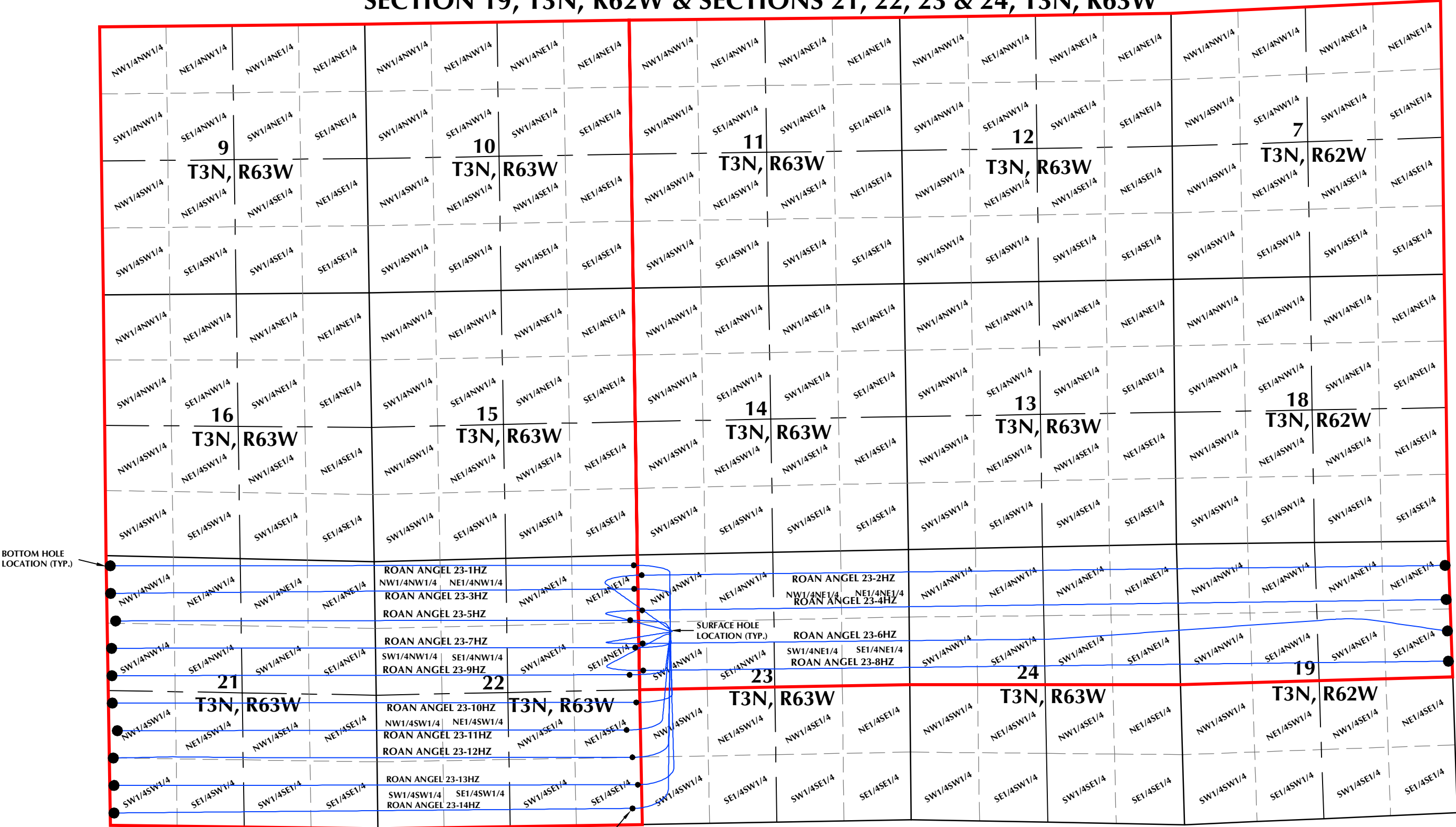
**Kerr-McGee Oil &
Gas Onshore LP**
1099 18th Street
Denver, Colorado 80202

WELL PAD - ROAN ANGEL 5-23HZ

DIRECTIONAL WELL PLAT (COGCC) /
MULTI-WELL PLAN (OGED)
ROAN ANGEL 23-1HZ, ROAN ANGEL 23-2HZ,
ROAN ANGEL 23-3HZ, ROAN ANGEL 23-4HZ,
ROAN ANGEL 23-5HZ, ROAN ANGEL 23-6HZ,
ROAN ANGEL 23-7HZ, ROAN ANGEL 23-8HZ,
ROAN ANGEL 23-9HZ, ROAN ANGEL 23-10HZ,
ROAN ANGEL 23-11HZ, ROAN ANGEL 23-12HZ,
ROAN ANGEL 23-13HZ & ROAN ANGEL 23-14HZ
LOCATED IN SECTION 19, T3N, R62W &
SECTIONS 21, 22, 23 & 24, T3N, R63W, 6TH P.M.
WELD COUNTY, COLORADO

DRAFTED BY:	SJM	CHECKED BY:	RKF	SHEET NO:
DATE DRAFTED:	3/10/23	DATE SURVEYED:	2/14/23	1B
REVISED:	3/14/23	FILE NAME:	17-197	1B OF 1

DIRECTIONAL WELL PLAT (COGCC) / MULTI-WELL PLAN (OGED)
SECTION 19, T3N, R62W & SECTIONS 21, 22, 23 & 24, T3N, R63W



BOTTOM HOLE LOCATION (TYP.)

SURFACE HOLE LOCATION (TYP.)

HEEL LOCATION (TYP.)

WELL PAD - ROAN ANGEL 5-23HZ

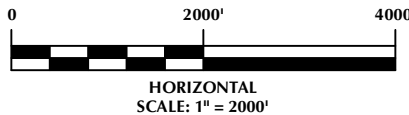
DIRECTIONAL WELL PLAT (COGCC) / MULTI-WELL PLAN (OGED)
ROAN ANGEL 23-1HZ, ROAN ANGEL 23-2HZ,
ROAN ANGEL 23-3HZ, ROAN ANGEL 23-4HZ, ROAN ANGEL 23-5HZ,
ROAN ANGEL 23-6HZ, ROAN ANGEL 23-7HZ, ROAN ANGEL 23-8HZ,
ROAN ANGEL 23-9HZ, ROAN ANGEL 23-10HZ, ROAN ANGEL 23-11HZ,
ROAN ANGEL 23-12HZ, ROAN ANGEL 23-13HZ & ROAN ANGEL 23-14HZ
LOCATED IN SECTION 19, T3N, R62W &
SECTIONS 21, 22, 23 & 24, T3N, R63W, 6TH P.M.
WELD COUNTY, COLORADO



LOVELAND OFFICE
6706 North Franklin Avenue
Loveland, Colorado 80538
Phone 970-776-4331

SHERIDAN OFFICE
1095 Saberton Avenue
Sheridan, Wyoming 82801
Phone 307-674-0609

**Kerr-McGee Oil &
Gas Onshore LP**
1099 18th Street
Denver, Colorado 80202



- LEGEND:
- DSU BOUNDARY
 - WELLBORE TRAJECTORY
 - HEEL LOCATION
 - BOTTOM HOLE LOCATION

DRAFTED BY:	SJM	CHECKED BY:	RKF	SHEET NO:
DATE DRAFTED:	3/10/23	DATE SURVEYED:	2/14/23	1C
REVISED:	3/14/23	FILE NAME:	17-197	1C OF 1