



CEMENT BOND LOG WITH GAMMA RAY

Comp. Desert Eagle Operating
Well Red Rocks #1-14
Field
Co. Las Animas
State Colorado

Company	Desert Eagle Operating		
Well	Red Rocks #1-14		
Field			
County	Las Animas	State	Colorado
Location:	API # : 05-071-09928-00		Other Services
	NE NW		
	SEC 1	TWP 30S	RGE 55W
Permanent Datum	Ground Level	Elevation	Elevation
Log Measured From	3'	Above Perm. Datum	K.B.
Drilling Measured From			D.F.
			G.L.

Date of Service	9/18/23		
Run Number	One		
Depth Driller or PBTB	1013		
Depth Logger	1012		
Bottom Log Interval	1011		
Top Log Interval	Surface		
Open Hole Size	12.25		
Type Fluid	Water		
Fluid Level	Full		
Fluid Density	//		
Max. Recorded Temperature	//		
Max. Wellhead Pressure	0		
Wellhead Connection	Rig		
Estimated Cement Top	Circulated		
Unit Number	18		
Wireline Size	.3125		
Location	Hays		
Recorded By	Justin Trout		
Witnessed By			

	Size	Wt/Ft	Top	Bottom
Tubing Record				
Surface Casing	9.625	36	0	1012
Production Casing				
Liner Record				

<<< Fold Here >>>

All interpretations are opinions based on inferences from electrical or other measurements and Midwest Wireline LLC cannot and does not guarantee the accuracy or correctness of any interpretation, and Midwest Wireline LLC will not be liable or responsible for any loss, costs, damages, or expenses incurred or sustained by anyone resulting from any interpretation made by any of our officers, agents or employees.

Comments

N/A DENOTES NOT AVAILABLE OR NON-APPLICABLE.

THANK YOU FOR USING MIDWEST WIRELINE LLC!

Your Midwest Wireline Crew	Tool Data - Services	Serial Number
Engineer: Justin Trout		
Operator:		
Operator:		
Operator:		

Sensor	Offset (ft)	Schematic	Description	Length (ft)	O.D. (in)	Weight (lb)
			Cable Head-Titan_144 1 7/16" Titan Cable Head	1.03	1.44	2.00
			Centralizer-275 Probe 2 3/4" Probe Adjustable Spring Centralizer	2.88	2.75	15.00
WVFS8	11.61		PROBE-RBT-DIGITAL-RBL-D (PR-012) Probe 2 3/4" Radii Bond-Digital	8.75	2.75	100.00
WVFS7	11.61					
WVFS6	11.61					
WVFS5	11.61					
WVFS4	11.61					
WVFS3	11.61					
WVFS2	11.61					
WVFS1	11.61					
WVFCAL	11.61					
WVF3FT	11.61					
WVF5FT	10.61					
HEADVOLT	7.42					
			Centralizer-275 Probe 2 3/4" Probe Adjustable Spring Centralizer	2.88	2.75	15.00
CCL	3.63					
GR	2.30		GR_CCL-2 3/4" Probe (060802)	4.54	2.75	50.00

Dataset: desert eagle_red rocks #1-13.db: field/CBL/run1/pass3.3
 Total length: 20.08 ft
 Total weight: 182.00 lb
 O.D.: 2.75 in

Log Variables

DatabaseC:\ProgramData\Warrior\Data\desert eagle_red rocks #1-13.db
Dataset field/CBL/run1/pass3.3/_vars_

Top - Bottom

BOREID in 7.875	BOTTEMP degF 86	CASEOD in 9.625	CASETHCK in 0.352	CASEWGHT lb/ft 36	MAXAMPL mV 0	MINAMPL mV 1	MINATTN db/ft 0.08
PERFS 0	PPT usec 0	SRFTEMP degF 85	TDEPTH ft 1012				

Variable Description

BOREID : Borehole I.D.
BOTTEMP : Bottom Hole Temperature
CASEOD : Casing O.D.
CASETHCK : Casing Thickness

CASEWGHT : Casing Weight
MAXAMPL : Maximum Amplitude
MINAMPL : Minimum Amplitude
MINATTN : Minimum Attenuation

PERFS : Perforation Flag
PPT : Predicted Pipe Time
SRFTEMP : Surface Temperature
TDEPTH : Total Depth



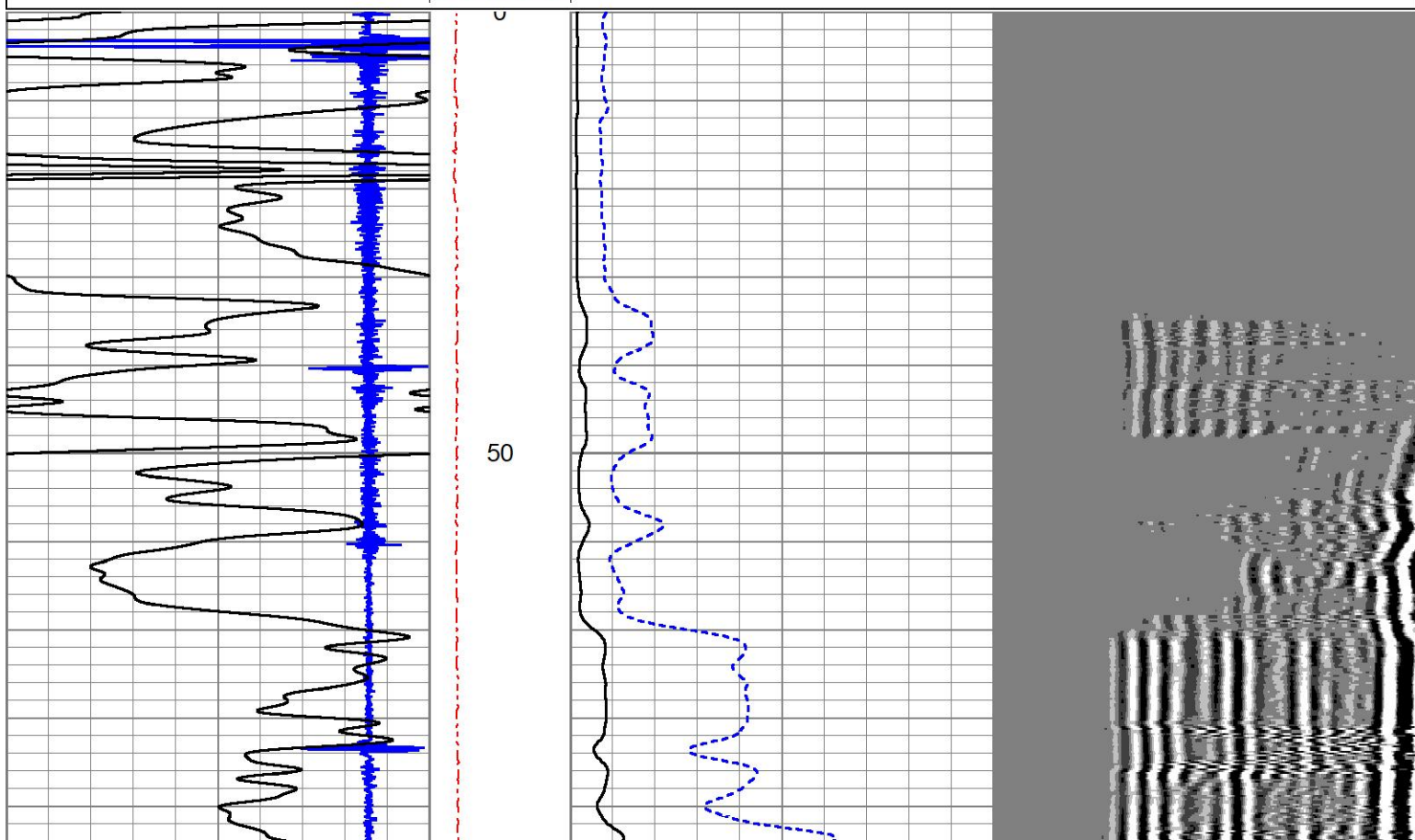
MAIN LOG

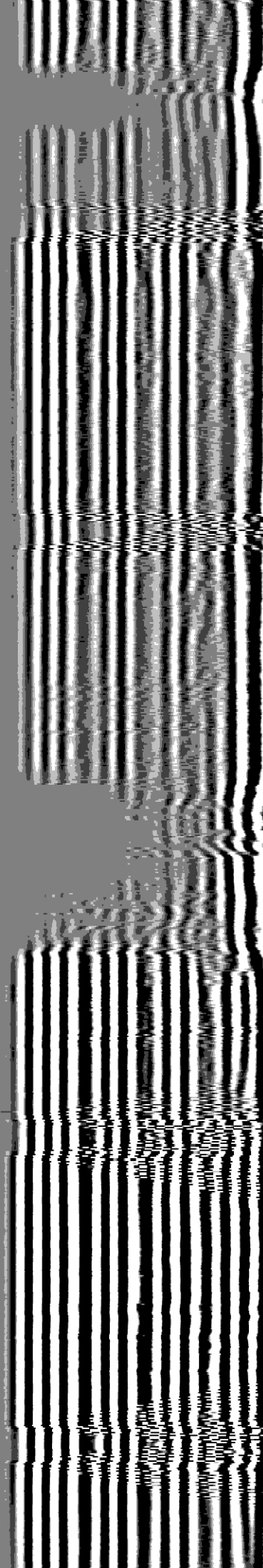
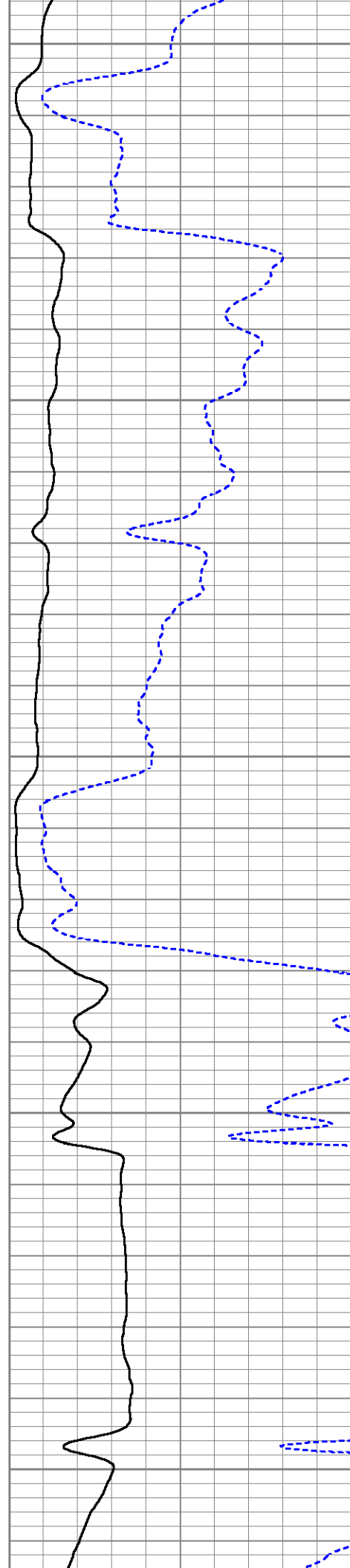
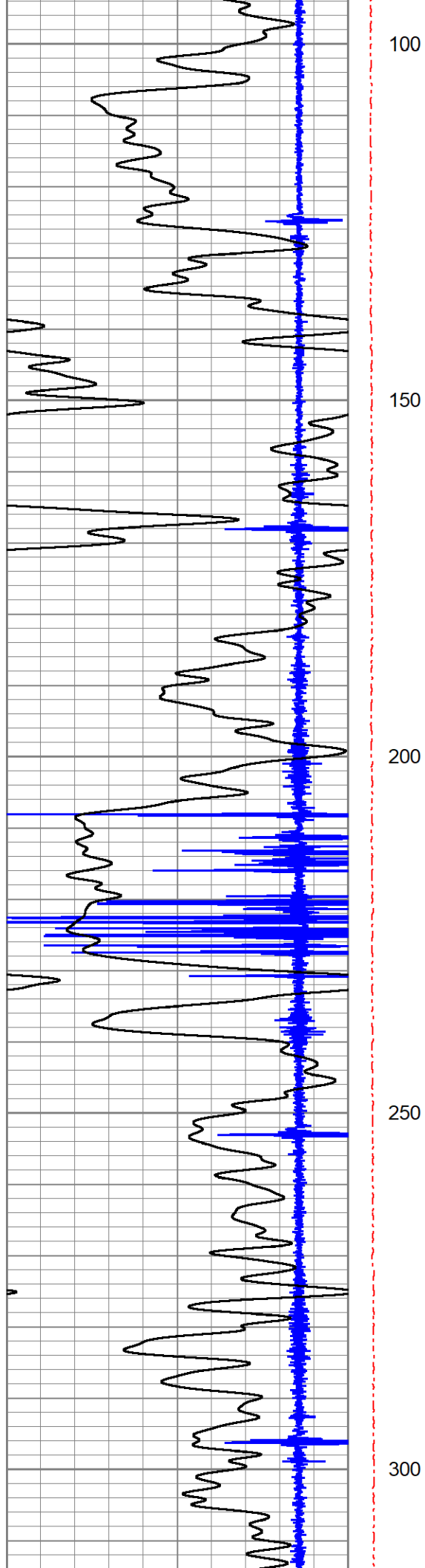
0

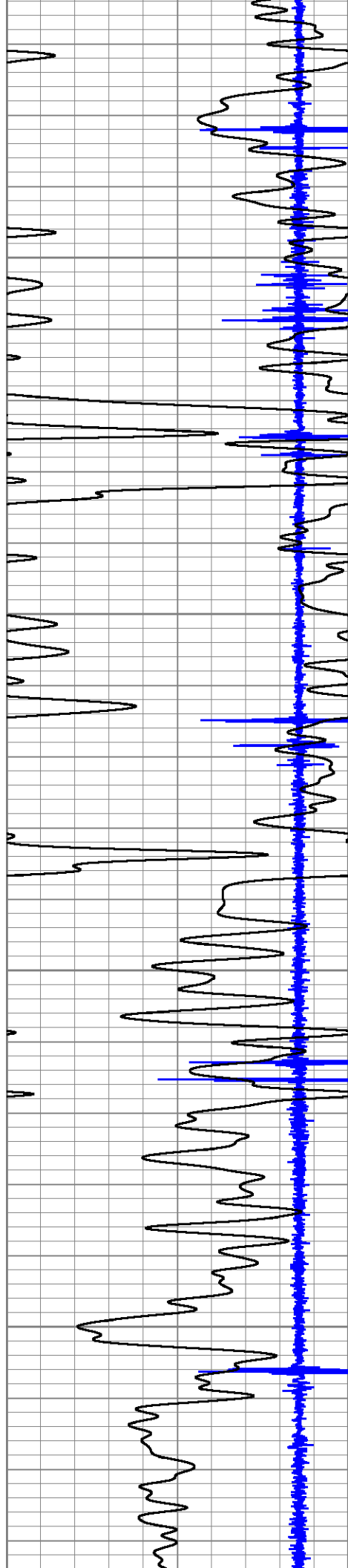
PSI APPLIED AT SURFACE

Database File desert eagle_red rocks #1-13.db
Dataset Pathname CBL/run1/pass3.3
Presentation Format pinr_cbl
Dataset Creation Mon Sep 18 16:23:41 2023
Charted by Depth in Feet scaled 1:240

-10	Collar Locator	1.5	Line Tension	0	Amplitude (mV)	100	200	Variable Density (usec)	1200
0	Gamma Ray	150	0 (lb 2000)						





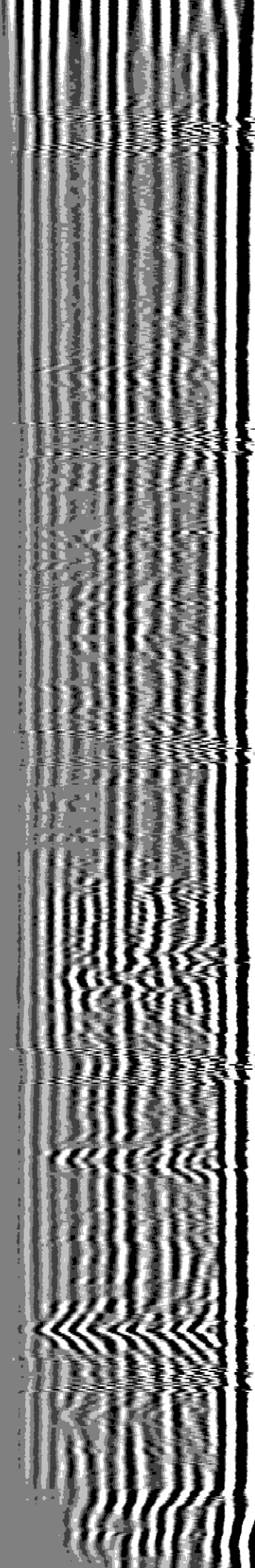
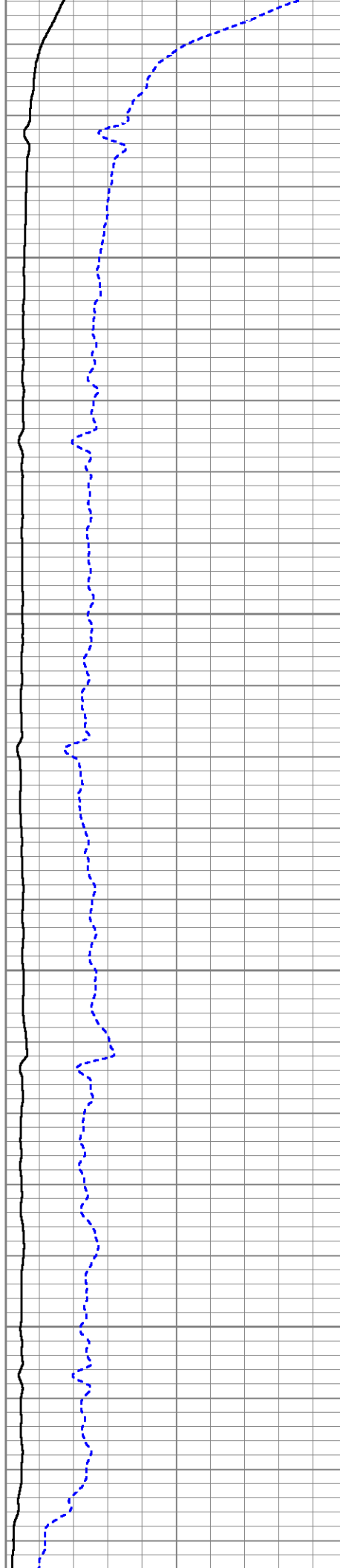


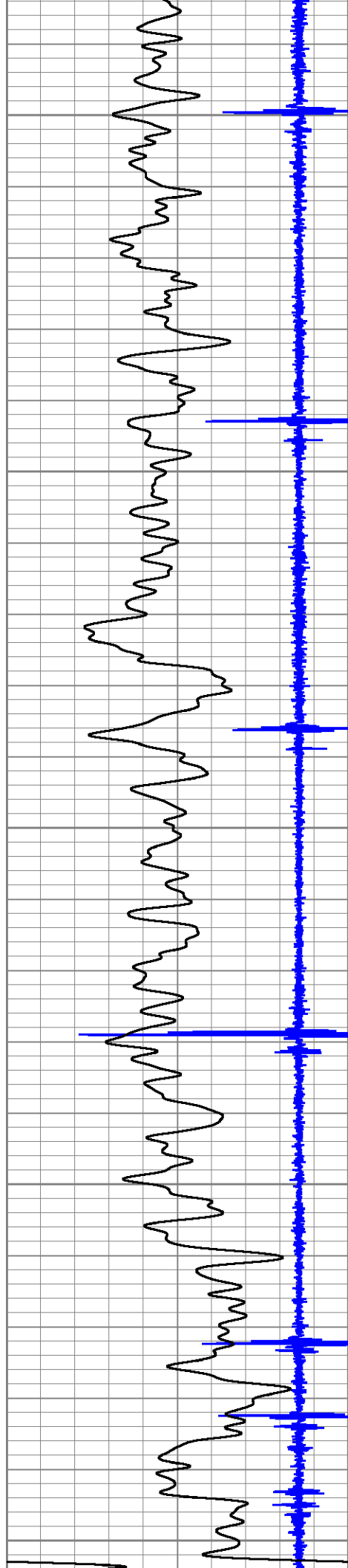
350

400

450

500





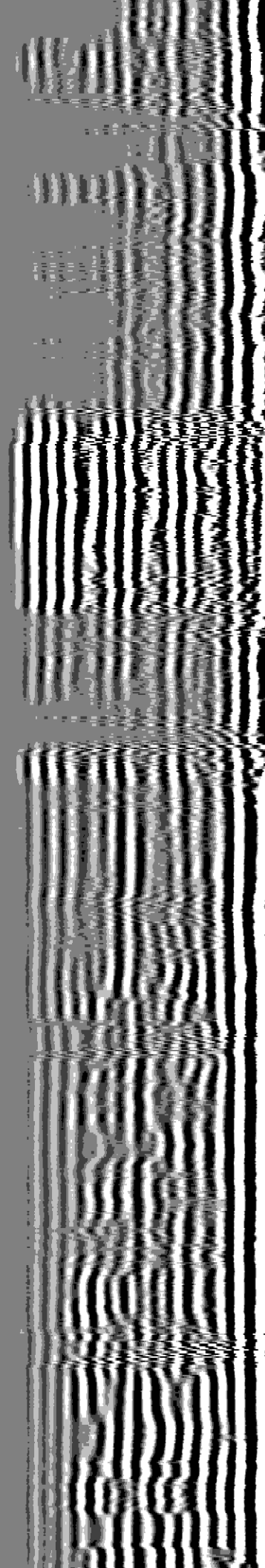
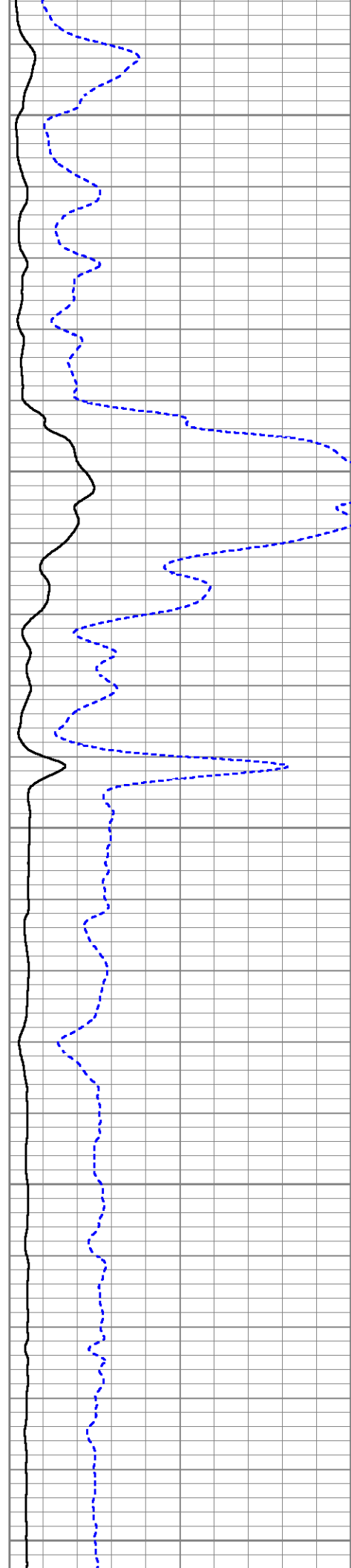
550

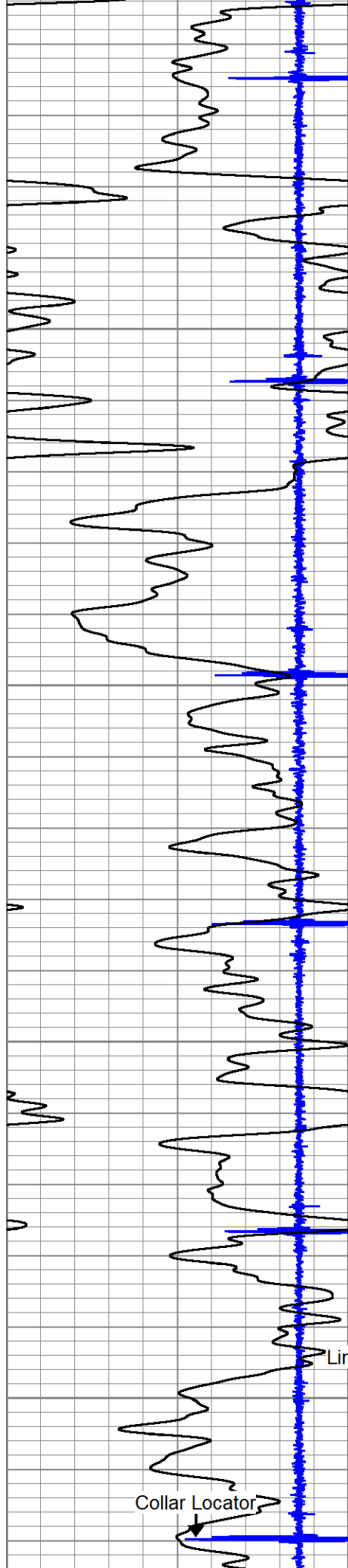
600

650

700

750





800

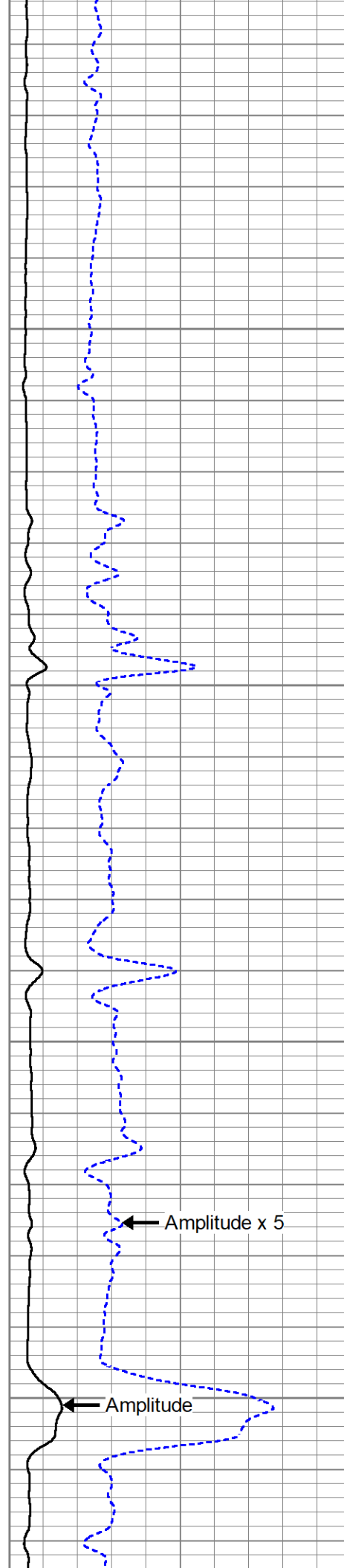
850

900

950

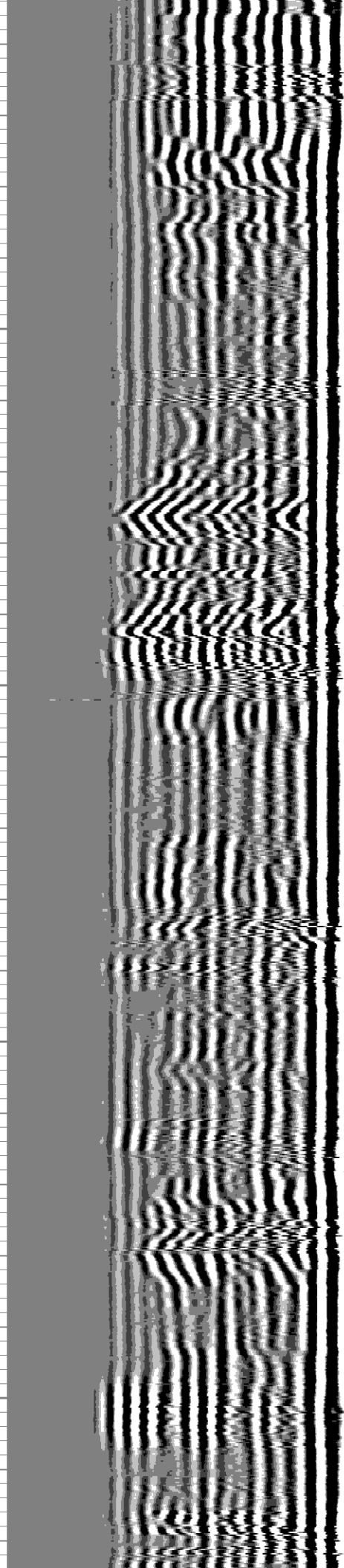
Line Tension

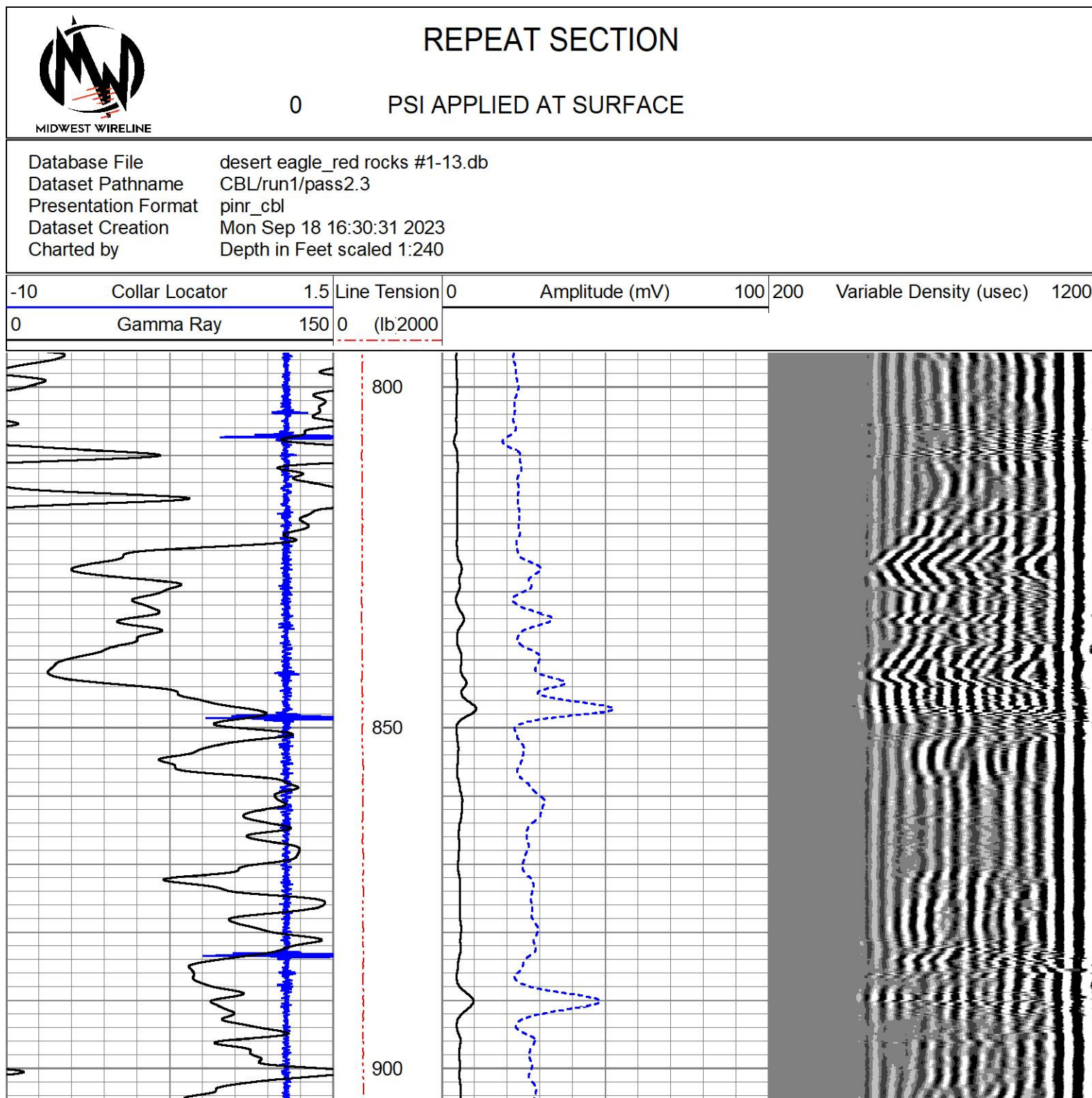
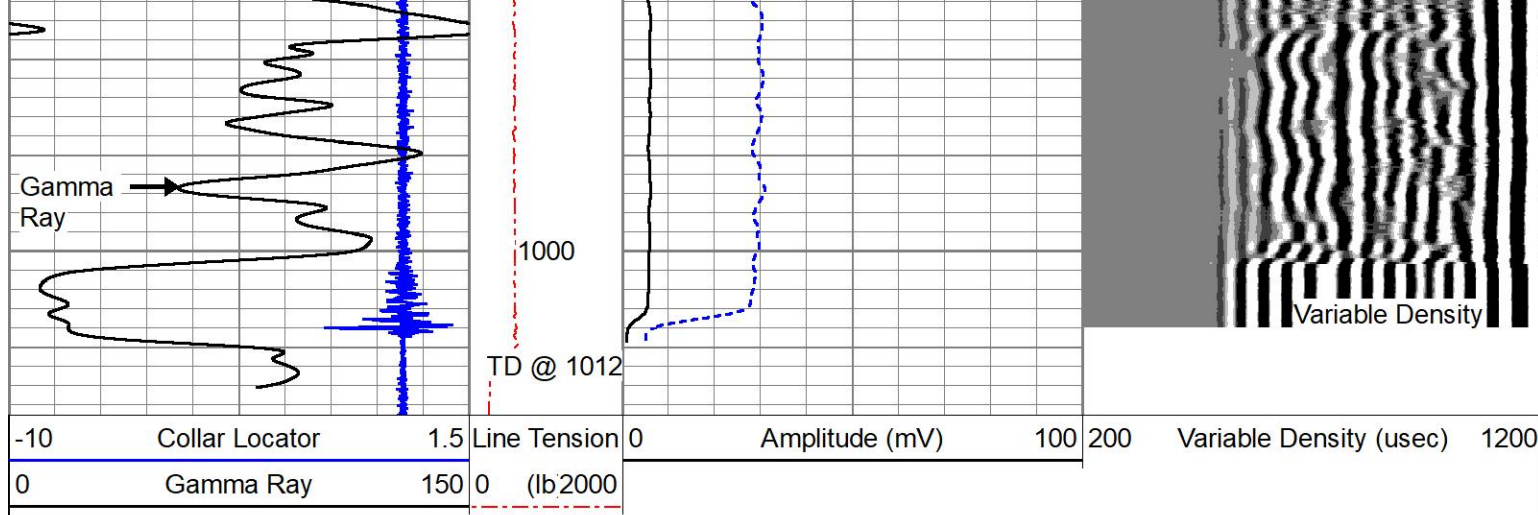
Collar Locator

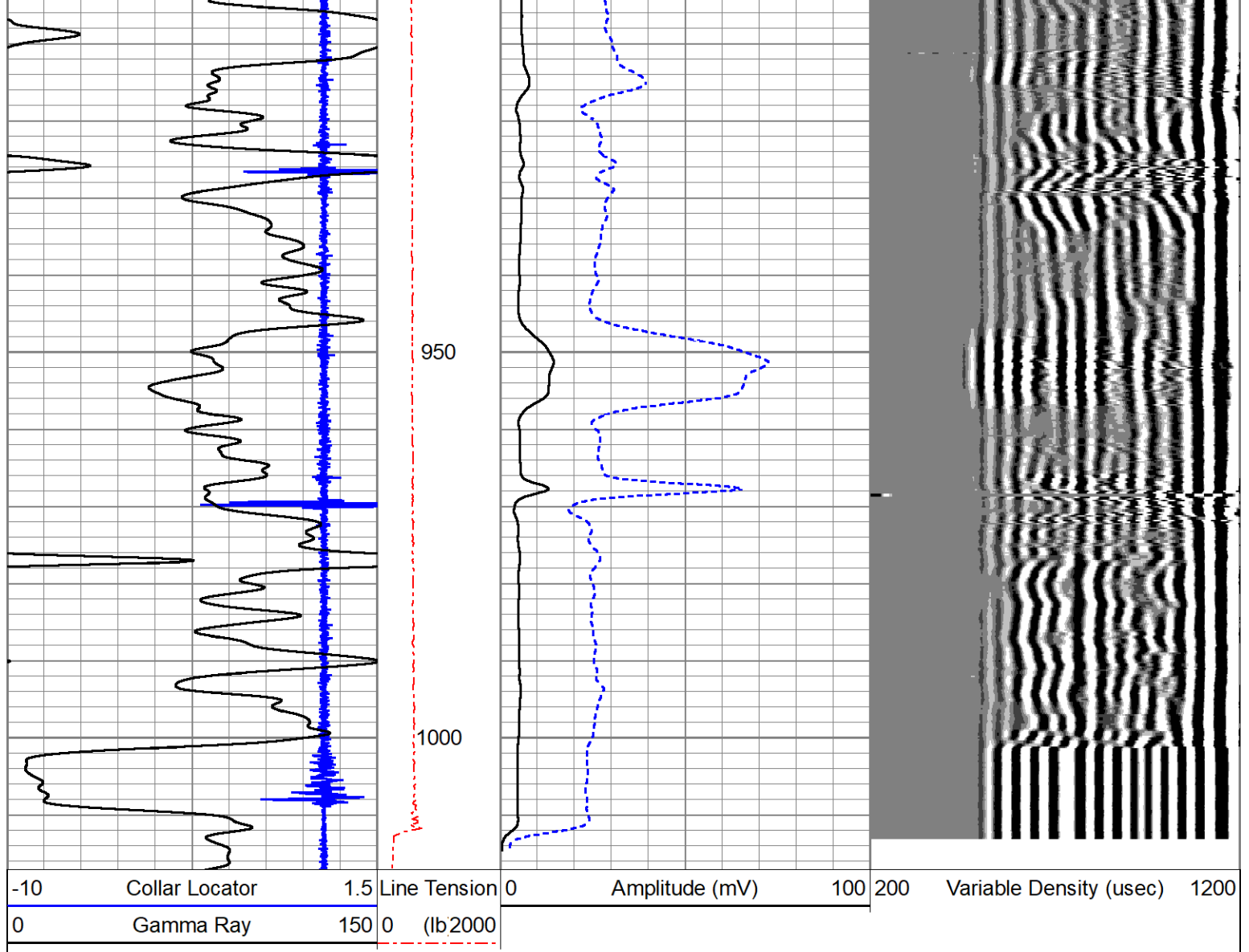


Amplitude x 5

Amplitude







Calibration Report

Database File desert eagle_red rocks #1-13.db
 Dataset Pathname CBL/run1/pass3.3
 Dataset Creation Mon Sep 18 16:23:41 2023

Gamma Ray Calibration Report

Serial Number: 060802
 Tool Model: 2 3/4" Probe
 Performed: Fri Sep 8 11:03:41 2023
 Calibrator Value: 1.0
 Background Reading: 0.0 cps
 Calibrator Reading: 1.0 cps
 Sensitivity: 1.6000 /cps

Segmented Cement Bond Log Calibration Report

Serial Number: PR-012
 Tool Model: RBL-D
 Calibration Casing Diameter: 5.500 in
 Calibration Depth: 2656.115 ft

Master Calibration performed Fri Aug 18 10:32:17 2023

	Raw (v)		Calibrated (mv)		Results	
	Zero	Cal	Zero	Cal	Gain	Offset
3'	0.009	2.296	1.200	51.300	21.900	1.013
CAL	0.009	2.499				
5'	0.008	1.742	1.200	51.300	28.888	0.968
SUM						
S1	0.008	2.095	0.000	100.000	47.923	-0.400
S2	0.008	2.096	0.000	100.000	47.900	-0.405
S3	0.008	2.179	0.000	100.000	46.070	-0.384
S4	0.009	2.289	0.000	100.000	43.861	-0.383
S5	0.009	2.357	0.000	100.000	42.592	-0.372
S6	0.009	2.360	0.000	100.000	42.525	-0.370
S7	0.009	2.300	0.000	100.000	43.641	-0.380
S8	0.008	2.138	0.000	100.000	46.961	-0.397

Air Zero Calibration, performed Mon Oct 24 11:29:00 2022:

	Raw (v)		Calibrated (v)		Results	
	Zero		Zero		Offset	
3'	0.000		0.000		0.000	
5'	0.000		0.000		0.000	
SUM						
S1	0.000		0.000		0.000	
S2	0.000		0.000		0.000	
S3	0.000		0.000		0.000	
S4	0.000		0.000		0.000	
S5	0.000		0.000		0.000	
S6	0.000		0.000		0.000	
S7	0.000		0.000		0.000	
S8	0.000		0.000		0.000	



MIDWEST WIRELINE

Company Desert Eagle Operating
 Well Red Rocks #1-14
 Field
 County Las Animas
 State Colorado