



SIDEWALL NEUTRON /  
DENSITY POROSITY

CompanyDesert Eagle Operating  
WellRed Rocks #1-14  
Field  
CountyLas Animas  
StateColorado

Company		Desert Eagle Operating	
Well		Red Rocks #1-14	
Field			
County	Las Animas	State	Colorado
Location:		API # : 05-071-09928-00-00	Other Services
		NE NW 674 FNL & 2341 FWL	DIL
SEC 1 TWP 30S RGE 55W			
Permanent Datum	Ground Level	Elevation	5499
Log Measured From	Ground Level	K.B.	
Drilling Measured From	Ground Level	D.F.	
		G.L.	5499

Date	10/27/2023						
Run Number	Two						
Type Log	SWN / CDL						
Depth Driller	1110						
Depth Logger	1107						
Bottom Logged Interval	1105						
Top Logged Interval	00						
Type Fluid In Hole	Air						
Salinity, PPM CL							
Density							
Level							
Max. Rec. Temp. F							
Operating Rig Time	2 Hours						
Equipment -- Location	P-24	HAYS					
Recorded By	T. Martin						
Witnessed By	Brandon Parks						
Borehole Record				Casing Record			
Run No.	Bit	From	To	Size	Wgt.	From	To
One	12.25	00	1012	9.625	36	00	1012
Two	7.875	1012	TD				

<<< Fold Here >>>

All interpretations are opinions based on inferences from electrical or other measurements and Pioneer Wireline Services, LLC cannot and does not guarantee the accuracy or correctness of any interpretation, and Pioneer Wireline Services, LLC will not be liable or responsible for any loss, costs, damages, or expenses incurred or sustained by anyone resulting from any interpretation made by any of our officers, agents or employees.

Comments

N/A DENOTES NOT AVAILABLE OR NON-APPLICABLE.

Log Measured From: Ground Level      0    Ft. Above Permanent Datum

THANK YOU FOR USING PIONEER ENERGY SERVICES

www.pioneerres.com      785-625-3858

Your Pioneer Energy Services Crew

This Log Record Was Witnessed By

Engineer: T. Martin  
Operator:  
Operator:  
Operator:

Primary Witness: Brandon Parks  
Secondary Witness:  
Secondary Witness:  
Secondary Witness:

# Log Variables

DatabaseC:\ProgramData\Warrior\Data\desert eagle red rocks #1-14.db  
Dataset field/well/CDL/pass2.1/\_vars\_

## Top - Bottom

BOREID in 8.75	BOTTEMP degF 100	CASEOD in 7	CASETHCK in 0	FLUIDDEN g/cc 0	MATRXDEN g/cc 2.68	PERFS No	SNDERR mmho/m 5
SNDERRM mmho/m 3	SPSHIFT mV 0	SRFTEMP degF 50	TDEPTH ft 1107				

## Variable Description

BOREID : Borehole I.D.  
BOTTEMP : Bottom Hole Temperature  
CASEOD : Casing O.D.  
CASETHCK : Casing Thickness  
FLUIDDEN : Fluid Density  
MATRXDEN : Matrix Density

PERFS : Perforation Flag  
SNDERR : Deep Sonde Error Correction  
SNDERRM : Medium Sonde Error Correction  
SPSHIFT : S.P. Baseline Offset  
SRFTEMP : Surface Temperature  
TDEPTH : Total Depth

# Log Variables

DatabaseC:\ProgramData\Warrior\Data\desert eagle red rocks #1-14.db  
Dataset field/well/SWN/pass2.1/\_vars\_

## Top - Bottom

AIR_HOLE? Yes	BOREID in 8.75	BOTTEMP degF 100	CASEOD in 7	CASETHCK in 0	FLUIDDEN g/cc 0	MATRXDEN g/cc 2.68	MudWgt lb/gal 9.5
NPORSEL Sandstone	PERFS No	SNDERR mmho/m 5	SNDERRM mmho/m 3	SPSHIFT mV 0	SRFTEMP degF 50	TDEPTH ft 1107	

## Variable Description

AIR\_HOLE? : Air Filled?  
BOREID : Borehole I.D.  
BOTTEMP : Bottom Hole Temperature  
CASEOD : Casing O.D.  
CASETHCK : Casing Thickness  
FLUIDDEN : Fluid Density  
MATRXDEN : Matrix Density  
MudWgt : Mud Weight

NPORSEL : Neutron Porosity Curve Select  
PERFS : Perforation Flag  
SNDERR : Deep Sonde Error Correction  
SNDERRM : Medium Sonde Error Correction  
SPSHIFT : S.P. Baseline Offset  
SRFTEMP : Surface Temperature  
TDEPTH : Total Depth



MIDWEST WIRELINE

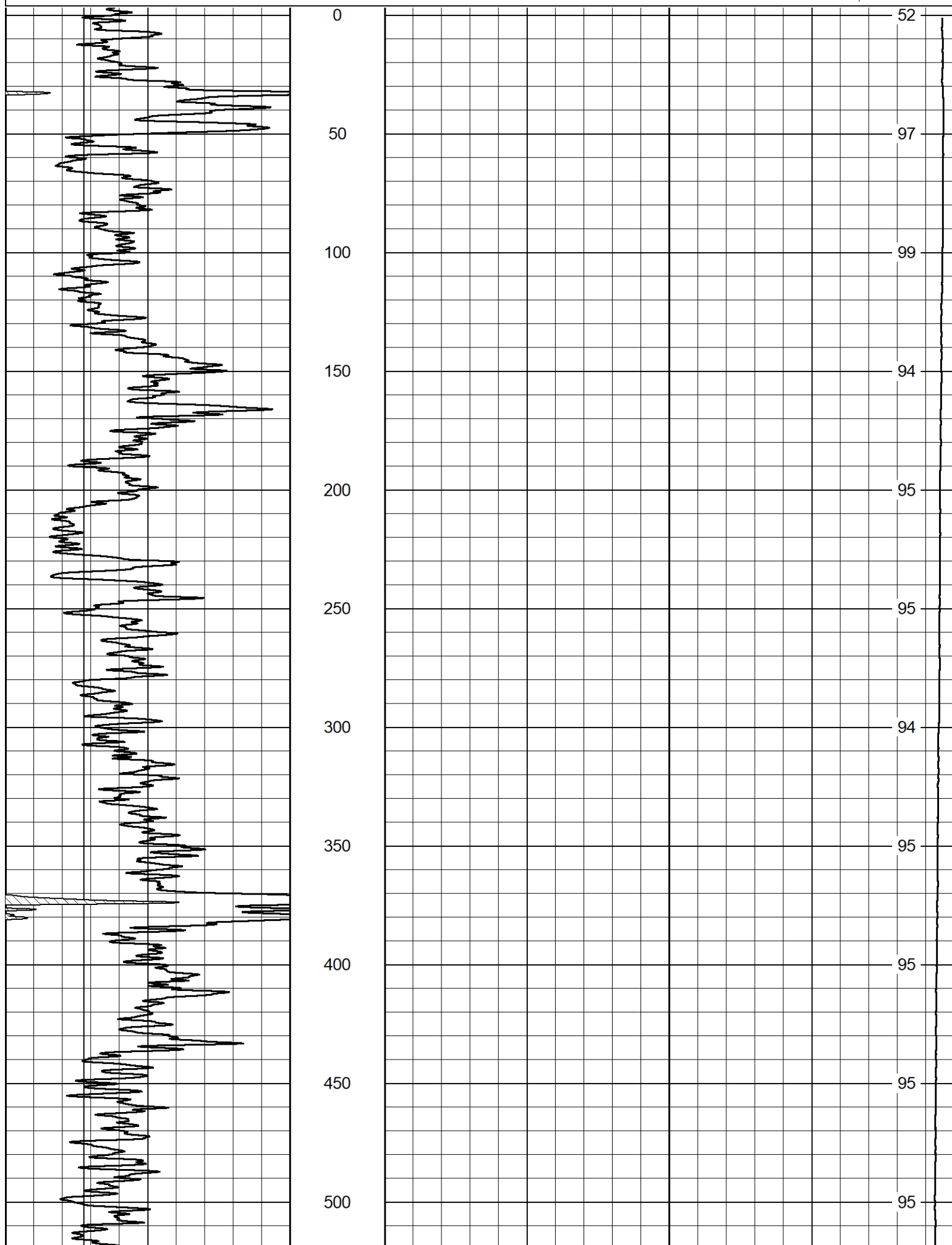
## DETAIL SECTION

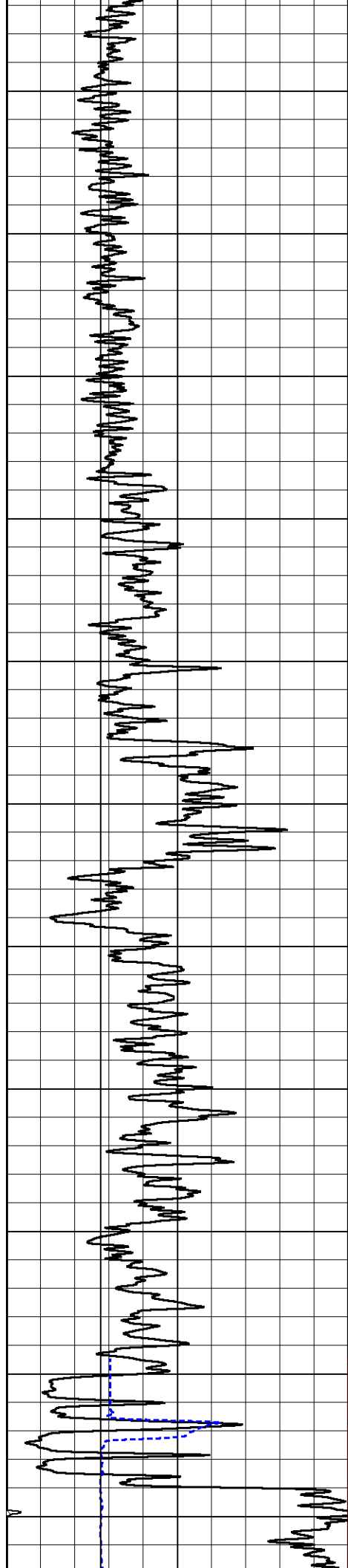
### MAIN PASS

Database File desert eagle red rocks #1-14.db  
Dataset Pathname DIL/pass2.1  
Presentation Format swncdl  
Dataset Creation Fri Oct 27 15:46:03 2023  
Charted by Depth in Feet scaled 1:600

0	Gamma Ray (GAPI)	150	30	SWSS (pu)	-10
6	Density Caliper (in)	16	30	Compensated Density (2.68 ma) (pu)	-10
6	Bit Size	16	15000	Line Weight (lb)	0
			-0.25	Correction (g/cc)	0.25

Line Speed  
(ft/min)





550

600

650

700

750

800

850

900

950

1000

1050

94

95

94

95

93

93

92

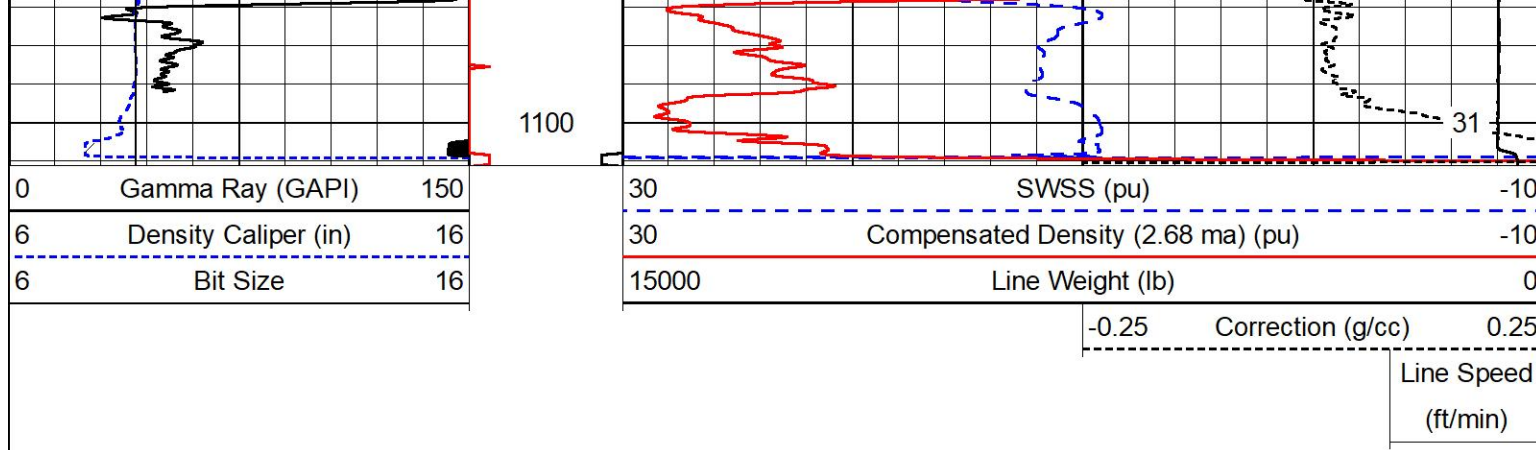
91

92

38

37

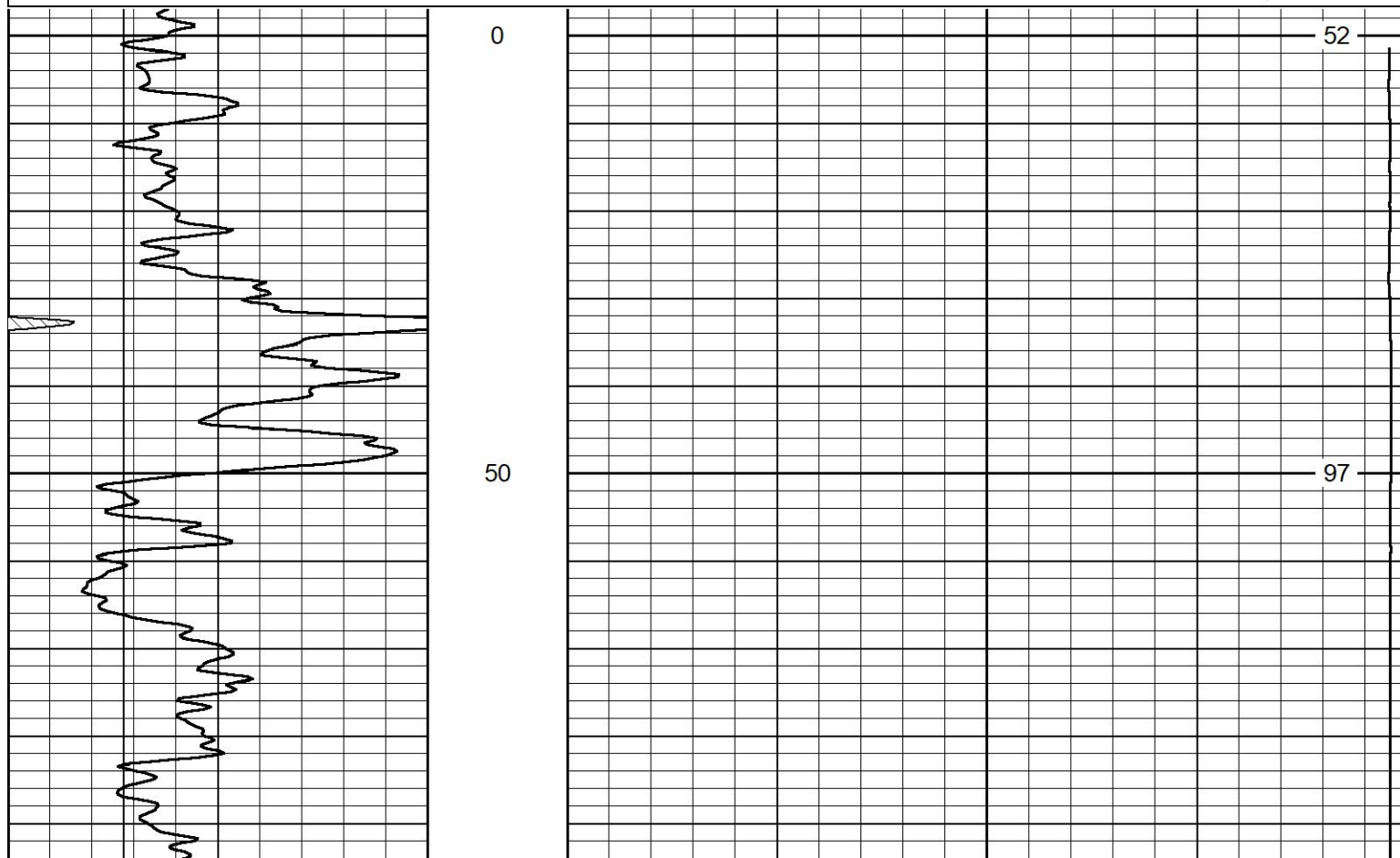
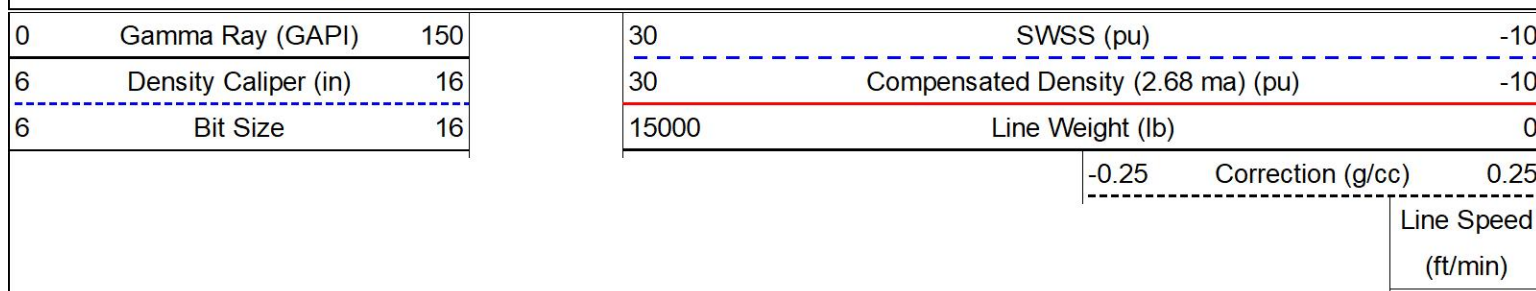


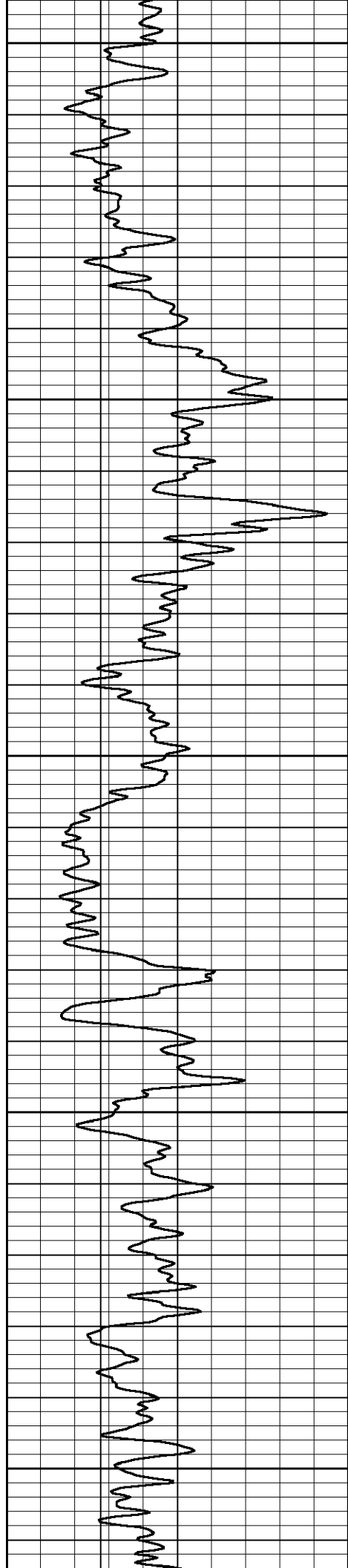


## DETAIL SECTION

### MAIN PASS

Database File: desert eagle red rocks #1-14.db  
 Dataset Pathname: DIL/pass2.1  
 Presentation Format: swncdl  
 Dataset Creation: Fri Oct 27 15:46:03 2023  
 Charted by: Depth in Feet scaled 1:240





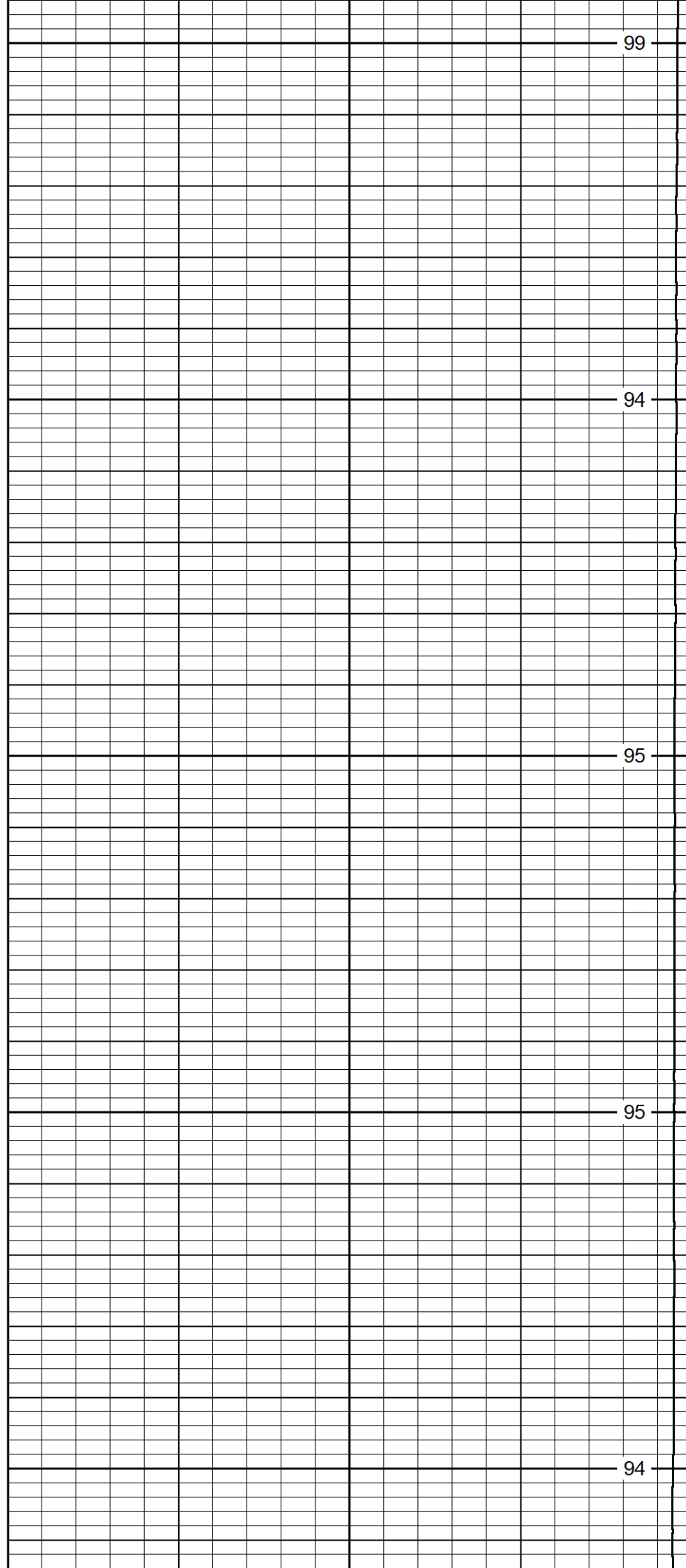
100

150

200

250

300



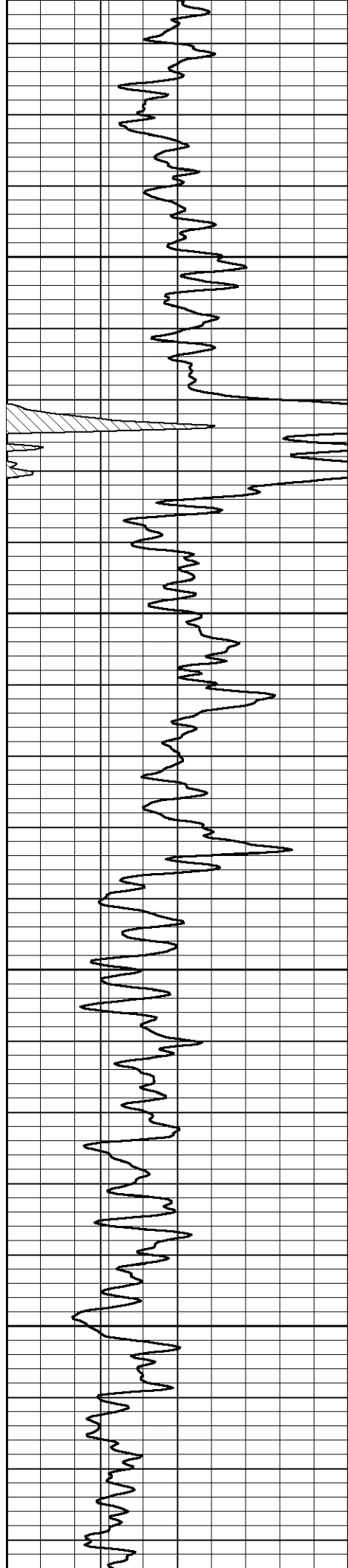
99

94

95

95

94



350

400

450

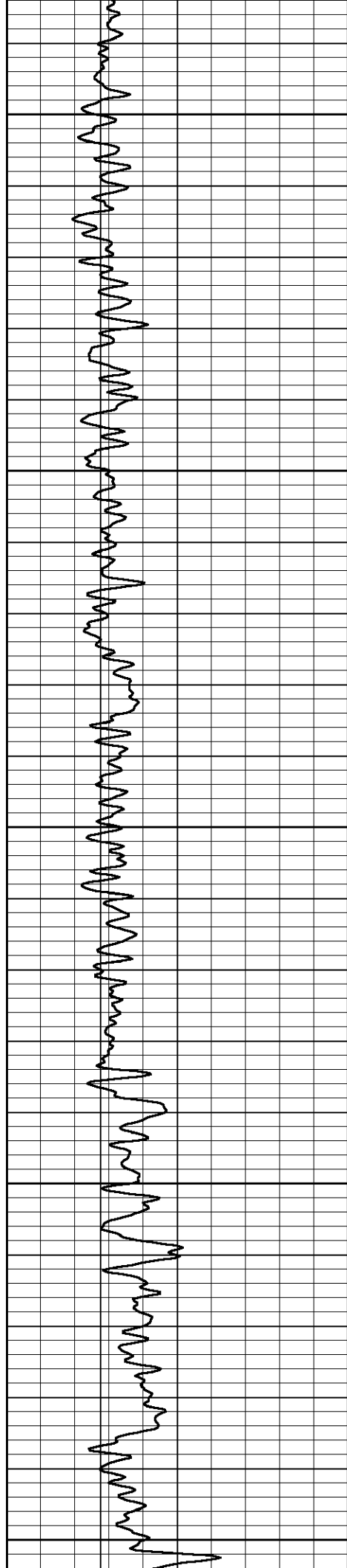
500

95

95

95

95



550

600

650

700

750

94

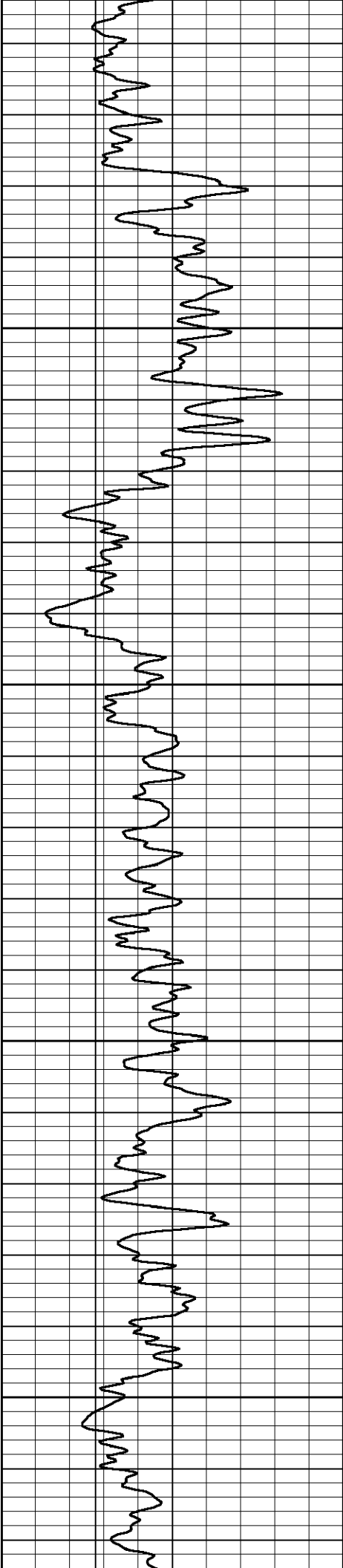
95

94

95

93





800

850

900

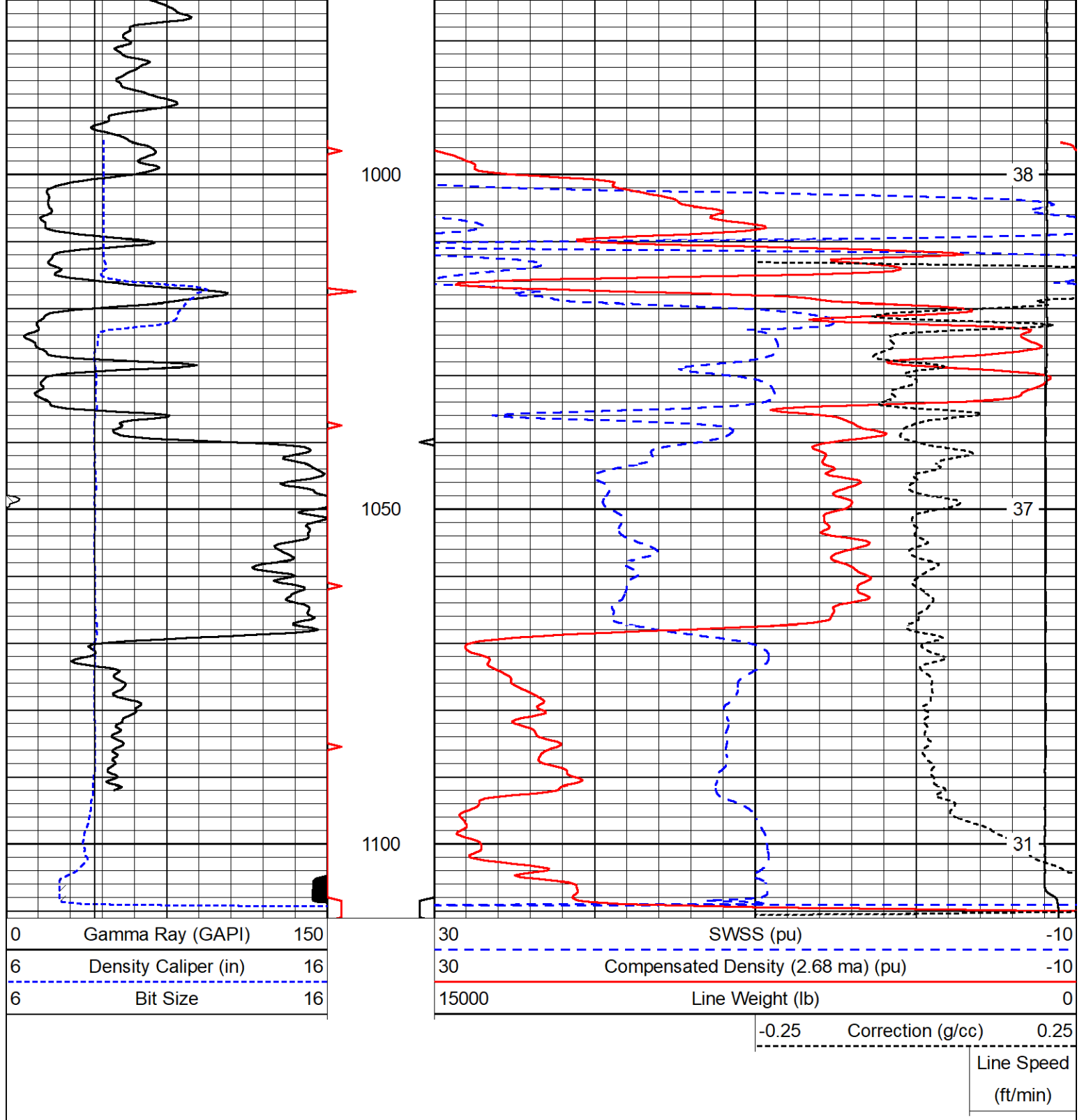
950

93

92

91

92



### Calibration Report

Database File desert eagle red rocks #1-14.db  
Dataset Pathname CDL/pass2.1  
Dataset Creation Fri Oct 27 16:02:34 2023

### Compensated Density Calibration Report

Serial-Model:	307-25-M&W
Source / Verifier:	20762B / 2ci
Master Calibration Performed:	Mon Oct 16 02:22:39 2023
Before Survey Verification Performed:	
After Survey Verification Performed:	

Master Calibration

	Density		Far Detector	Near Detector	
Magnesium	1.680	g/cc	4567.03	5405.52	cps
Aluminum	2.570	g/cc	1004.45	3659.64	cps
Spine Angle = 75.56			Density/Spine Ratio = 0.569		
	Size		Reading		
Small Ring	6.00	in	1.16		
Large Ring	18.00	in	1.01		

Gamma Ray Calibration Report				
Serial Number:	102			
Tool Model:	M&W			
Performed:	Mon Sep 25 22:02:33 2023			
Calibrator Value:	1.0		GAPI	
Background Reading:	0.0		cps	
Calibrator Reading:	1.0		cps	
Sensitivity:	0.5250		GAPI/cps	

Calibration Report				
Database File	desert eagle red rocks #1-14.db			
Dataset Pathname	SWN/pass2.1			
Dataset Creation	Fri Oct 27 16:25:57 2023			
Sidewall Neutron Calibration Report				
Serial Number:		702		
Tool Model:		M&W-SP		
SWN Calibration		Mon Jan 2 10:53:51 2023		
Readings		Target		Normalization
2566.42 cps		1085.00 cps		0.3500
Caliper Calibration		Mon Jan 2 10:53:51 2023		
Readings		Reference	Gain	Offset
0.86		4.00	-18.31	18.65
0.31		14.00		
Gamma Ray Calibration Report				
Serial Number:		102		
Tool Model:		M&W		
Performed:		Mon Sep 25 22:02:33 2023		
Calibrator Value:		1.0	GAPI	
Background Reading:		0.0	cps	
Calibrator Reading:		1.0	cps	
Sensitivity:		0.5250	GAPI/cps	

	Company	Desert Eagle Operating
	Well	Red Rocks #1-14
	Field	



MIDWEST WIRELINE

Field

County

State

Las Animas

Colorado