

# DRILLING PLAN

PROSPECT/FIELD	Buckskin Mesa Unit	COUNTY	Rio Blanco	STATE	Colorado
OWNERS	Meridian Oil Inc.				
WELL NO.	41-27 Buckskin Mesa Unit	LEASE	Meridian Oil, Inc.		
LOCATION	NW NE NE Sec. 27-T1N-R95W				
EST. T.D.	1,450' TVD	GROUND ELEV.	6,045' (est)		

PROGNOSIS: Based on 6,060' KB(est)

LOGS: Type Interval

MARKER	DEPTH	HYDC	DATUM
Wasatch	Surface	0&G	
TD	1,450'		4,610'

DIL/GR/FDC/CNL

DEVIATION:

Surface: 3 deg max, 1 deg/100'; every 300'  
Production: 5 deg max, 1 deg/100', every 500'

DST'S:

None Planned

CORES:

None Planned

SAMPLES:

30' from 60' to 1000'  
Mud logger on @ 60'

BOP:

7-1/16", 3000 psi Pipe  
7-1/16" Rotating Head

Surface Formation Wasatch

Max. Anticipated BHP: .40 - .43 psi/ft

MUD:	Interval	Type	WT	Vis	WL	Remarks
	0' - 1,000'	Water/Gel-Lime Sweep	8.8 +/-	28+/-	NC	
	1,000' - TD	Air or Air/Mist				

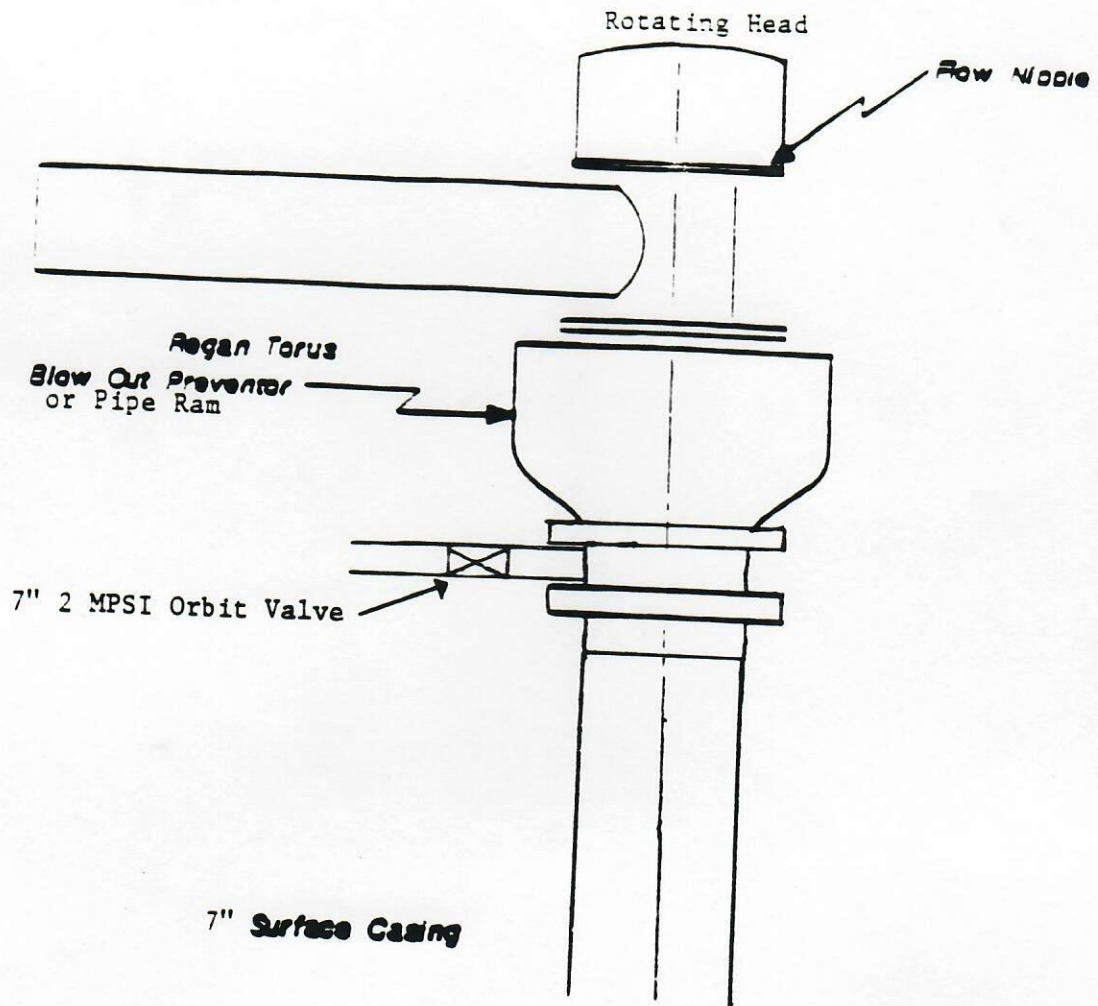
CASING:	Size	Wt ppf	Hole	Depth	Cement	WOC	Remarks
Production:	9-5/8"	40	12-1/4"	60'			
	7"	20	8-3/4"	1,000'	150 sx	8 hrs	
			6-1/8"	TD	Open Hole		

PROBABLE PLUGS, IF REQ'D: Per COGC requirements.

OTHER: SURVEYS:

Prep By: GAO/cam Date: 7/20/94 Doc: 4127DP

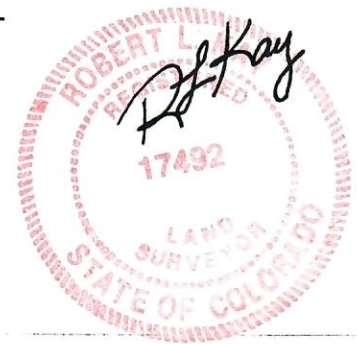
# B. O. P. LAYOUT



MERIDIAN OIL, INC.

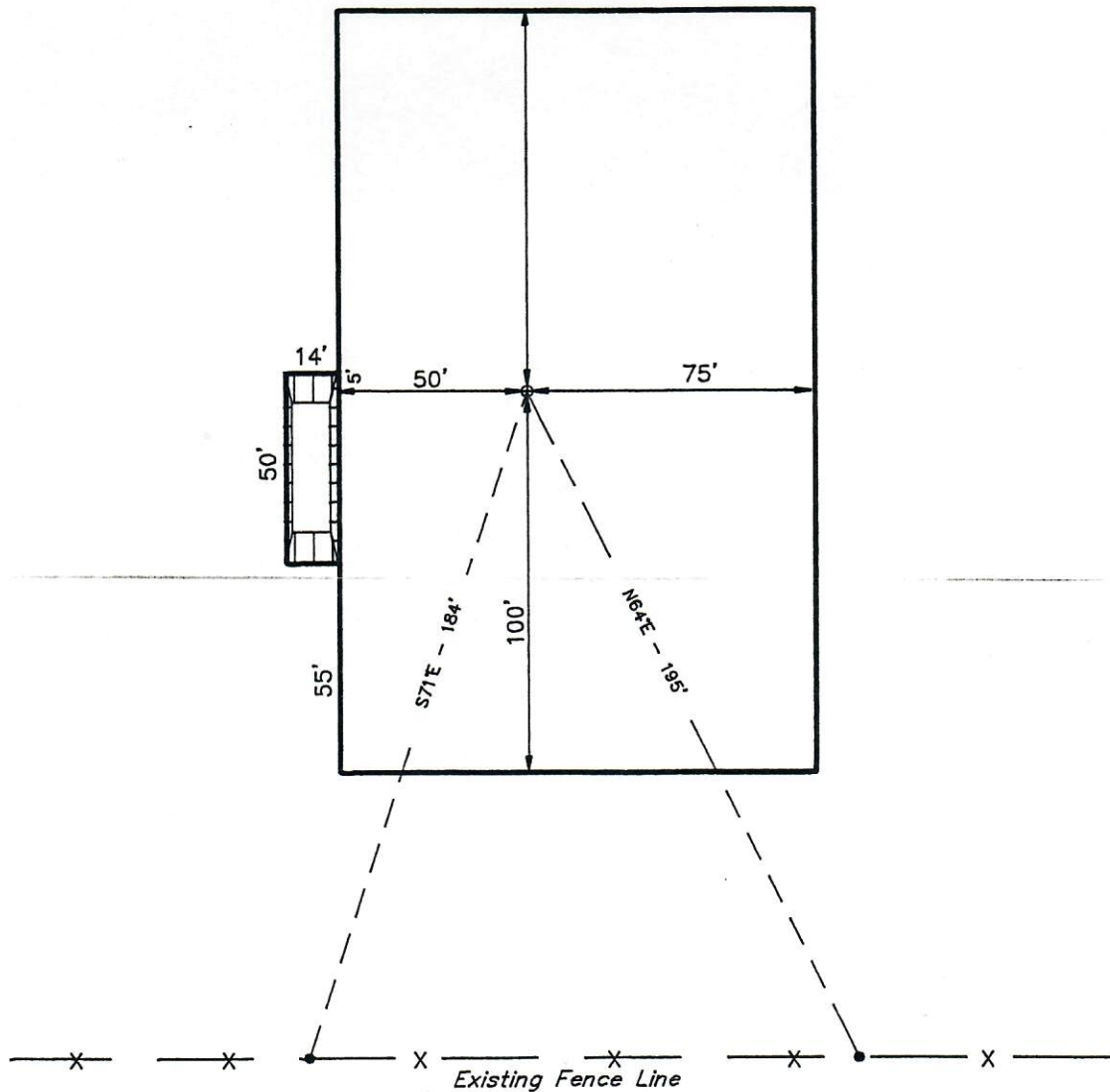
ADDENDUM TO LEGAL PLAT

#41-27 BUCKSKIN MESA UNIT  
SECTION 27, T1N, R95W, 6th P.M.  
500' FNL 1200' FEL



SCALE: 1" = 50'  
DATE: 8-02-94  
DRAWN BY: T.D.H.

SURFACE USE OF LOCATION IS  
AGRICULTURAL. VEGETATION  
CONSISTS MAINLY OF GRASSES.

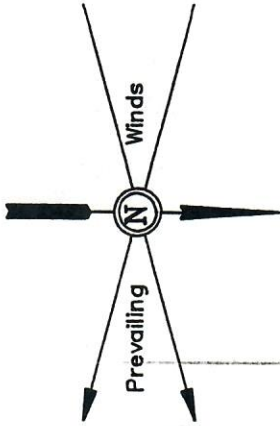
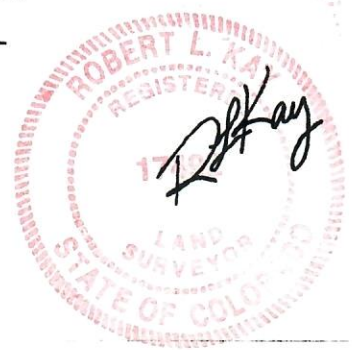




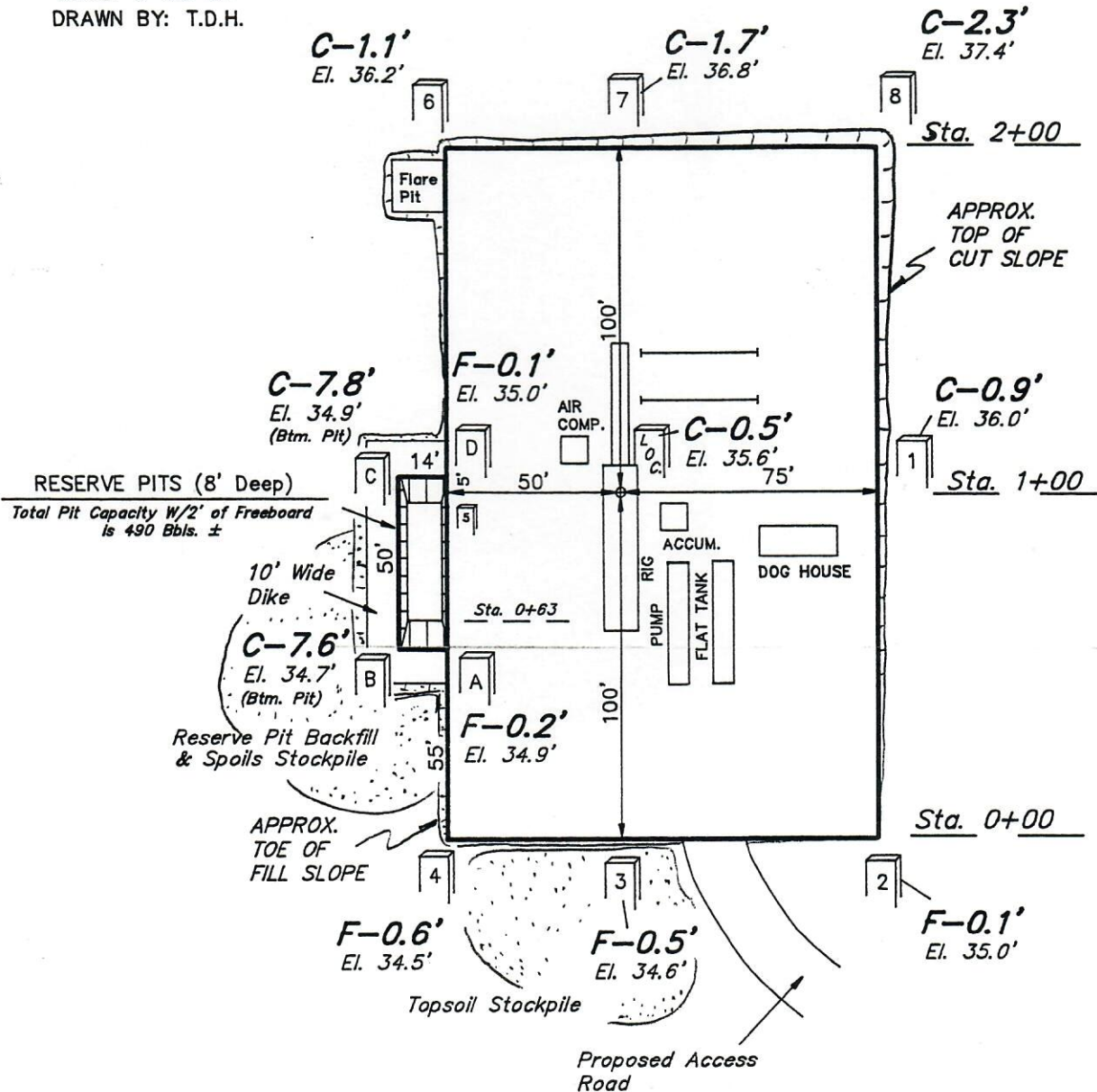
# MERIDIAN OIL, INC.

## LOCATION LAYOUT FOR

#41-27 BUCKSKIN MESA UNIT  
SECTION 27, T1N, R95W, 6th P.M.  
500' FNL 1200' FEL



SCALE: 1" = 50'  
DATE: 8-02-94  
DRAWN BY: T.D.H.



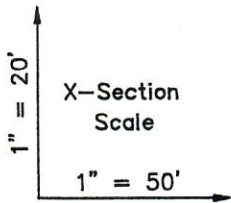
Elev. Ungraded Ground at Location Stake = 6035.6'  
Elev. Graded Ground at Location Stake = 6035.1'

UINTAH ENGINEERING & LAND SURVEYING  
85 So. 200 East • Vernal, Utah 84078 • (801) 789-1017

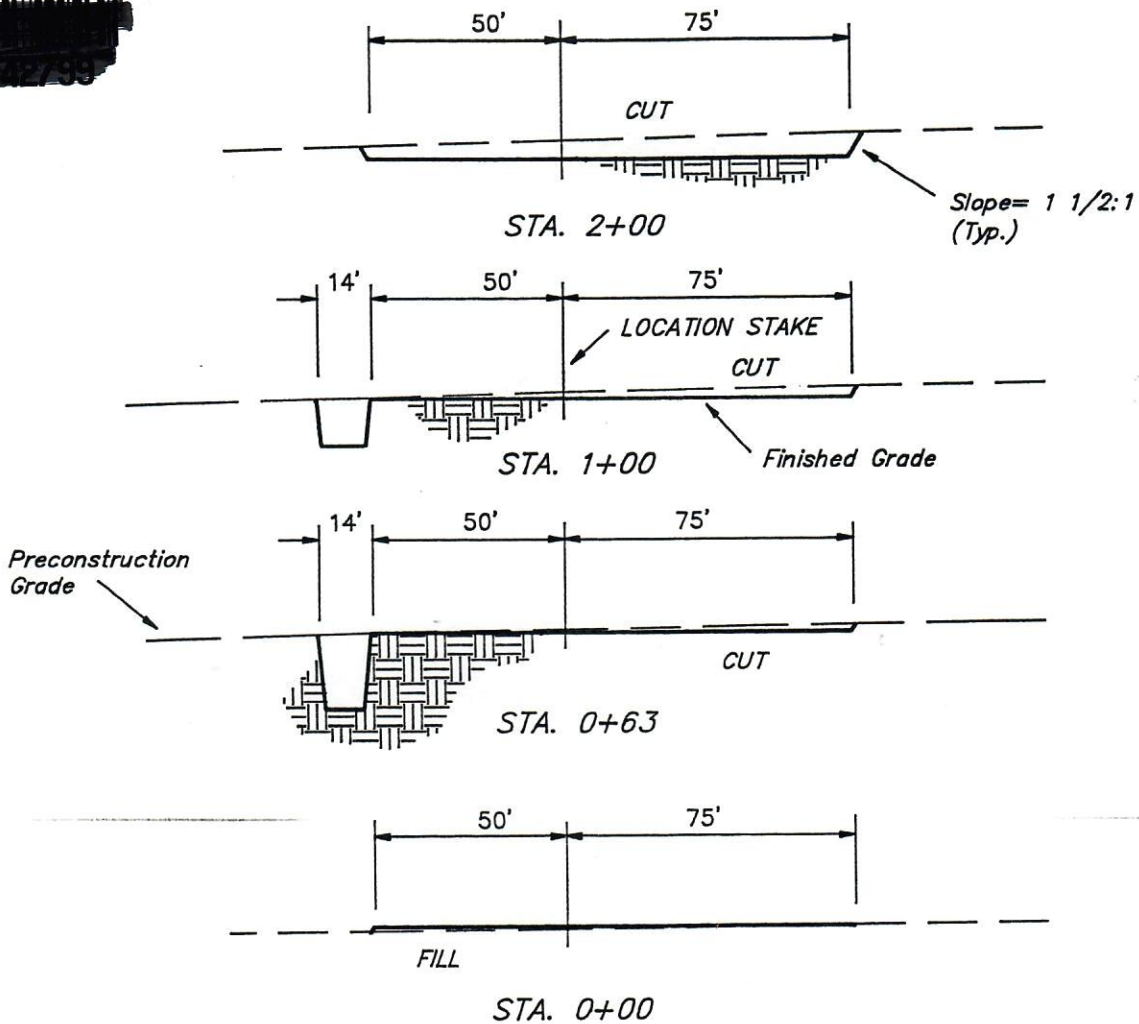
# MERIDIAN OIL, INC.

## TYPICAL CROSS SECTION

#41-27 BUCKSKIN MESA UNIT  
SECTION 27, T1N, R95W, 6th P.M.  
500' FNL 1200' FEL



DATE: 8-02-94  
DRAWN BY: T.D.H.



### APPROXIMATE YARDAGES

CUT		
(6") Topsoil Stripping	=	470 Cu. Yds.
Remaining Location	=	480 Cu. Yds.
TOTAL CUT	=	950 CU.YDS.
FILL	=	220 CU.YDS.

EXCESS MATERIAL AFTER 5% COMPACTION	=	720 Cu. Yds.
Topsoil & Pit Backfill (1/2 Pit Vol.)	=	550 Cu. Yds.
EXCESS UNBALANCE (After Rehabilitation)	=	170 Cu. Yds.

UINTAH ENGINEERING & LAND SURVEYING  
85 So. 200 East \* Vernal, Utah 84078 \* (801) 789-1017