



---

# **Terra Energy Partners, LLC**

## **SURFACE POST JOB REPORT**

Leverich SR 422-13 05-045-24566  
S:13 T:7S R:94W Garfield CO

CallSheet #: 88173  
Proposal #: 70777



**SURFACE Post Job Report**

**Attention:** Mr. Dustin Childers | (936) 524-8828 | dchilders@terraep.com  
Terra Energy Partners, LLC  
4828 Loop Central Dr., Suite 900 | Houston, TX 77081

---

Dear Mr. Dustin Childers,

Thank you for the opportunity to provide cementing services on this well. American Cementing strives to achieve complete customer satisfaction. If you have any questions regarding the services or data provided, please contact American Cementing at any time.

Sincerely,

**Zen Keith**

SME North | (307) 757-7178 | zen.keith@americacementing.com

**Field Office**      28730 US-6, Rifle, CO 81650  
Phone: (970) 657-1187

## Job Details & Summary

### Geometry

Type	Function	OD (in)	ID (in)	Weight (lb/ft)	Thread	Top (ft)	Bottom (ft)	Excess (%)
Casing	Outer	20	19.5	53	n/a	0	80	0
Open Hole	Outer	n/a	13.5	n/a	n/a	80	500	16
Open Hole	Outer	n/a	13.5	n/a	n/a	500	1176	16
Casing	Inner	9.625	8.921	36	n/a	0	1176	0

### Equipment / People

Unit Type	Unit	Power Unit	Employee #1
Cement Trailer Float	CTF-522	TRC-112	Hector Balderas II
Cement Pump Float	CPF-052	TRH-1137	Danny Ridgeway
Light Duty Vehicles	LDV-083		Stephen Lancaster

### Timing

Event	Date/Time
Call Out	8/11/2023 04:08
Depart Facility	8/11/2023 16:57
On Location	8/11/2023 17:50
Rig Up Iron	8/12/2023 10:15
Job Started	8/12/2023 14:02
Job Completed	8/12/2023 15:32
Rig Down Iron	8/12/2023 15:33
Depart Location	8/12/2023 17:20

### General Job Information

Metrics	Value
Well Fluid Density	9 lb/gal
Well Fluid Type	WBM
Rig Circulation Vol	321 bbls
Rig Circulation Time	1 hours
Calculated Displacement	88 bbls
Actual Displacement	88 bbls
Total Spacer to Surface	20 bbls
Total CMT to Surface	35 bbls
Well Topped Out	N/A

### Job Details

Metrics	Value
Flare Prior to Job	No
Flare Prior to Job	0 units
Flare During Job	No
Flare During Job	0 units
Flare at End of Job	No
Flare at End of Job	0 units
Well Full Prior to Job	Yes
Well Fluid Density Into Well	9 lb/gal
Well Fluid Density Out of Well	9 lb/gal

### Job Details (cont.)

Metrics	Value
BHCT	81 °F
BHST	99 °F

### Water Analysis

Metrics	Value	Recommended
Water Source	Flat Tank	
Temperature	73 °F	50-80 °F
pH Level	6	5.5-8.5
Chlorides	0 mg/L	0-3000 mg/L
Total Alkalinity	140	0-1000
Total Hardness	300 mg/L	0-500 mg/L
Carbonates	0 mg/L	0-100 mg/L
Sulfates	200 mg/L	0-1500 mg/L
Potassium	0 mg/L	0-3000 mg/L
Iron	0.6 mg/L	0-300 mg/L

### Circulation

Lost Circulation Experienced
No

## Job Execution Information

Fluid	Product	Function	Density (lb/gal)	Yield (ft <sup>3</sup> /sk)	Water Rq. (gal/sk)	Water Rq. (gal/bbl)	Volume (sks)	Volume (bbl)	Designed Top (ft)
1	Water	Flush	8.34			42.00		20.00	0
2	Lead	Lead	12.30	2.31	13.15		158.00	64.94	0
3	Tail	Tail	12.80	2.03	11.15		190.00	68.79	500
4	Water	DisplacementFinal	8.34			42.00		86.00	0

## Job Fluid Details

Fluid	Type	Fluid	Product	Function	Conc.	Uom
2	Lead	Lead	ASTM TYPE IL	Cement	100.00	%
2	Lead	Lead	A-10	Accelerator	5.00	%BWOB
2	Lead	Lead	A-2	Accelerator	3.00	lb/sk
2	Lead	Lead	A-7P	Accelerator	2.00	lb/sk
2	Lead	Lead	FP-24	Defoamer	0.30	%BWOB
2	Lead	Lead	IntegraSeal POLI	LostCirculation	0.25	lb/sk
2	Lead	Lead	STATIC FREE	Other	0.01	lb/sk
3	Tail	Tail	ASTM TYPE IL	Cement	100.00	%
3	Tail	Tail	A-10	Accelerator	5.00	%BWOB
3	Tail	Tail	A-2	Accelerator	2.00	lb/sk
3	Tail	Tail	A-7P	Accelerator	2.00	lb/sk
3	Tail	Tail	FP-24	Defoamer	0.30	%BWOB
3	Tail	Tail	IntegraSeal POLI	LostCirculation	0.25	lb/sk
3	Tail	Tail	STATIC FREE	Other	0.01	lb/sk

## Job Logs

Line	Event	Date (MM/DD/YY)	Time (HH:MM)	Density (lb/gal)	Pump Rate (bpm)	Pump Volume (bbls)	Pipe Pressure (psi)	Comment
1	Callout	8/11/2023	04:08					CREW CALLED OUT FOR ON LOCATION TIME OF 10:30 8/12/2023
2	Depart RCO	8/11/2023	16:57					CREW DEPARTS FOR RIG LOCATION
3	Arrive On Location	8/11/2023	17:50					CREW ARRIVES ON LOCATION
4	Rig Up Iron	8/12/2023	10:15					RIG UP IRON AND HOSES, DONE AND WAITING ON RIG TO RUN CASING
5	Safety Meeting	8/12/2023	14:02					JSA SAFETY MEETING WITH AC, RIG CREW, AND CUSTOMER REP
6	Fill Lines	8/12/2023	14:33	8.34	4	10	207	FILL LINES WITH 10 BBLS FRESH WATER
7	Pressure Test Lines	8/12/2023	14:38				3200	PRESSURE TEST PUMP AND LINES TO 3000 PSI
8	Other	8/12/2023	14:42	12.3				WEIGHTING UP CEMENT
9	Pump Lead Cement	8/12/2023	14:43	12.3	5.5	5	400	BEGIN PUMPING 12.3 PPG LEAD CEMENT, DENSITY VERIFIED BY MUD SCALE.
10	Pump Lead Cement	8/12/2023	14:47	12.3	5.5	20	394	20 BLS LEAD PUMPED ( full returns )
11	Pump Lead Cement	8/12/2023	14:50	12.3	5.7	40	386	40 BBLS LEAD PUMPED
12	Pump Lead Cement	8/12/2023	14:52	12.3	5.5	60	391	60 BBLS LEAD PUMPED
13	Pump Lead Cement	8/12/2023	14:54	12.3	5.5	65	412	65 BBLS LEAD PUMPED , SWAP TO TAIL
14	Pump Tail Cement	8/12/2023	14:55	12.8	5.5	5	420	5 BBLS TAIL 12.8 PPG PUMPED , DENSITY VERIFIED BY MUDSCALE
15	Pump Tail Cement	8/12/2023	14:57	12.8	5.5	20	411	20 BBLS TAIL PUMPED (full returns )
16	Pump Tail Cement	8/12/2023	14:59	12.8	5.5	40		40 BBLS TAIL PUMPED
17	Pump Tail Cement	8/12/2023	15:02	12.8	5.5	60	409	60 BBLS TAIL PUMPED
18	Pump Tail Cement	8/12/2023	15:05	12.8	3	69	113	69 BBLS TAIL PUMPED
19	Drop Plug	8/12/2023	15:10					DROP PLUG WASH ON TOP OF PLUG
20	Pump Displacement	8/12/2023	15:11	8.34	6.5	10	578	10 BBLS DISPLACEMENT PUMPED ( full returns )
21	Pump Displacement	8/12/2023	15:14	8.34	6.5	30	591	30 BBLS DISPLACEMENT PUMPED
22	Pump Displacement	8/12/2023	15:19	8.34	6.5	50	630	50 BBLS DISPLACEMENT PUMPED
23	Pump Displacement	8/12/2023	15:24	8.34	6.5	70	641	70 BBLS DISPLACEMENT PUMPED ( cement back @ 53 bbls displaced ) 35 BBLS CEMENT TO SURFACE
24	Pump Displacement	8/12/2023	15:29	8.34	4	88	330	86 BBLS DIPLACEMENT PUMPED FCP 330
25	Land Plug	8/12/2023	15:32	8.34	4	88	1006	LAND PLUG FINAL BUMP PRESS 1006
26	Check Floats	8/12/2023	15:35					BLEED OFF CHECK FLOATS .5 BBLS BACK

## Pump Diagrams

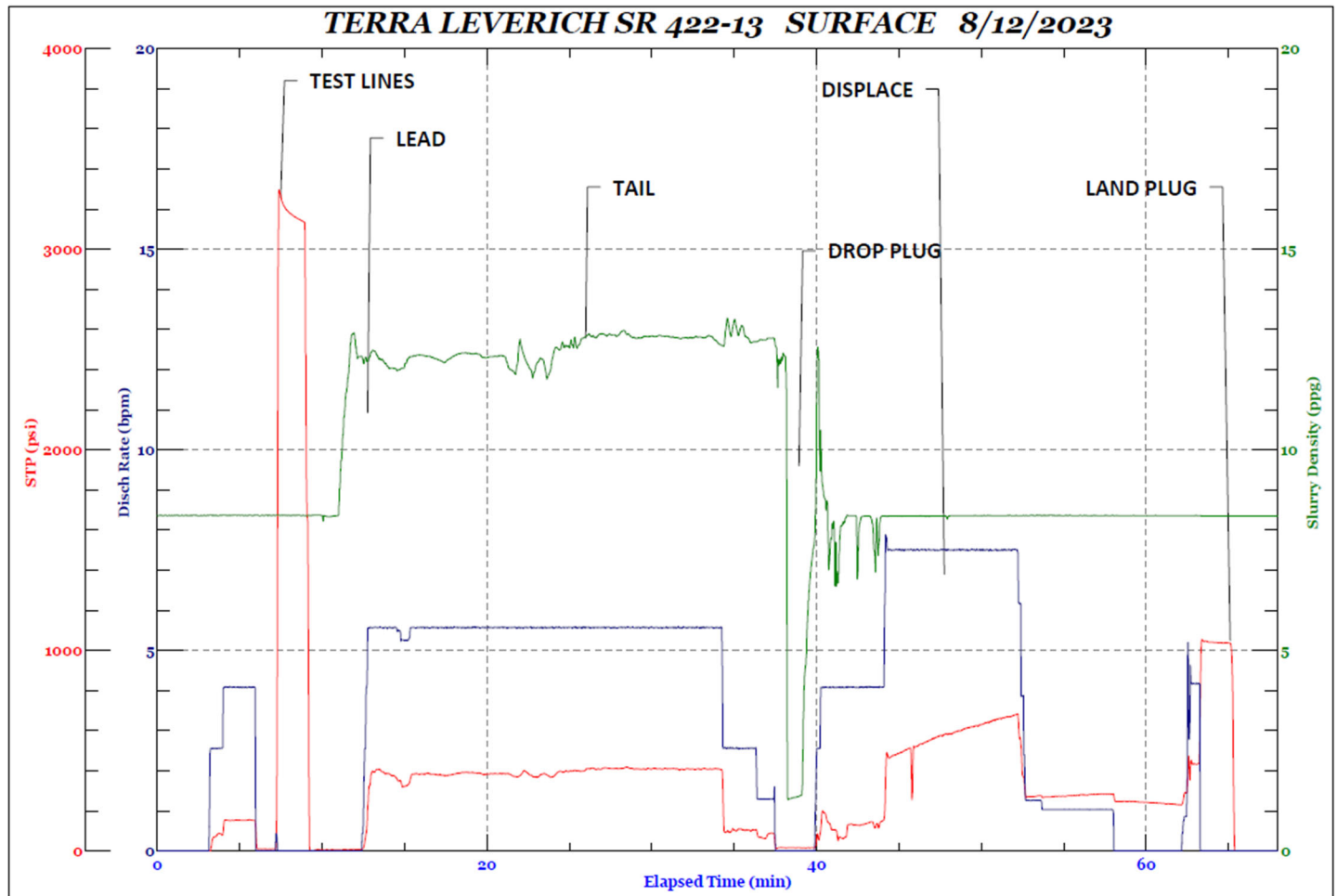


JobMaster Program Version 5.01C1

Job Number: 88173

Customer: TERRA

Well Name: LEVERICH SR 422-13



Job Start: Saturday, August 12, 2023