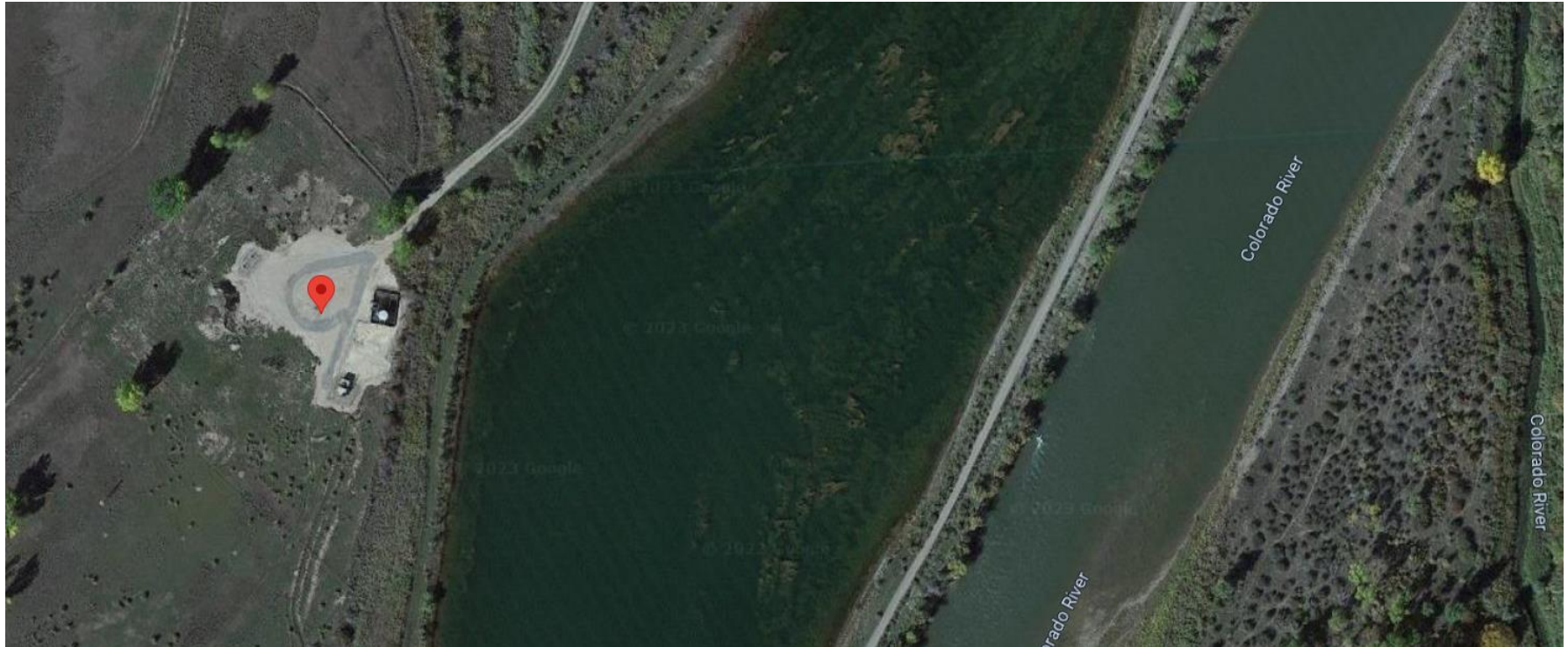


Storm Water Management and Erosion control
Location Name: TEP Rocky Mountain LLC GV 25-27 Pad
Location # 311574



**Location Overview: Location is within High Priority/Density
Habitat areas & Bald Eagle Nest/Roost sites & in close
proximity to NSO Habitat area. Location is approximately 28
yards from a small lake/pond & approximately 244 yards from
the Colorado River. Location is in close proximity to National
Wetlands Inventory areas.**

Section/Township/Range: 27 6S94W

Storm water Management and Erosion control
Location Name: TEP Rocky Mountain LLC GV 25-27 Pad
Location # 311574



North West corner of location.



North East corner of location.



South West corner of location.



South East corner of location.

Storm water Management and Erosion control
Location Name: TEP Rocky Mountain LLC GV 25-27 Pad
Location # 311574



Photo # 7764 Stockpiled soils on location/insufficient BMP's



Photo # 7765 Stockpiled soils on location/insufficient BMP's

Storm water Management and Erosion control
Location Name: TEP Rocky Mountain LLC GV 25-27 Pad
Location # 311574



Photo # 7766 Stockpiled sand/soils on location/insufficient BMP's