



---

# **Terra Energy Partners, LLC**

## **SURFACE POST JOB REPORT**

Leverich SR 324-13 05-045-24569  
S:13 T:7S R:94W Garfield CO

CallSheet #: 87166  
Proposal #: 68614



**SURFACE Post Job Report**

**Attention:** Mr. Dustin Childers | (936) 524-8828 | dchilders@terraep.com  
Terra Energy Partners, LLC  
4828 Loop Central Dr., Suite 900 | Houston, TX 77081

---

Dear Mr. Dustin Childers,

Thank you for the opportunity to provide cementing services on this well. American Cementing strives to achieve complete customer satisfaction. If you have any questions regarding the services or data provided, please contact American Cementing at any time.

Sincerely,

**Krystal Schell**

Field Engineer I | (719) 992-1830 | krystal.schell@americacementing.com

**Field Office**      28730 US-6, Rifle, CO 81650  
Phone: (970) 657-1187

## Job Details & Summary

### Geometry

Type	Function	OD (in)	ID (in)	Weight (lb/ft)	Thread	Top (ft)	Bottom (ft)	Excess (%)
Casing	Outer	20	19.5	53	n/a	0	80	0
Open Hole	Outer	n/a	13.5	n/a	n/a	80	500	16
Open Hole	Outer	n/a	13.5	n/a	n/a	500	1186	16
Casing	Inner	9.625	8.921	36	n/a	0	1176	0

### Equipment / People

Unit Type	Unit	Power Unit	Employee #1
Cement Trailer Float	CTF-385	TRC-188	Ridgeway, Danny
Light Duty Vehicles	LDV-083		Lancaster, Stephen
Cement Pump Float	CPF-058	TRH-855	Carrasco, Joel
Cement Utility Float	CUF-164	LDV-062	Dragon, Shane

### Timing

Event	Date/Time
ERTS	00/27/2023 00:00
Call Out	5/27/2023 13:20
Depart Facility	5/27/2023 18:40
On Location	5/27/2023 19:31
Rig Up Iron	5/27/2023 19:35
Job Started	5/28/2023 00:13
Job Completed	5/28/2023 01:17
Rig Down Iron	5/28/2023 01:25
Depart Location	5/28/2023 02:20

### General Job Information

Metrics	Value
Well Fluid Density	9 lb/gal
Well Fluid Type	WBM
Rig Circulation Vol	478 bbls
Rig Circulation Time	0.5 hours
Calculated Displacement	87.4 bbls
Actual Displacement	87.4 bbls
Total Spacer to Surface	10 bbls
Total CMT to Surface	45 bbls
Well Topped Out	N/A

### Job Details

Metrics	Value
Flare Prior to Job	No
Flare Prior to Job	0 units
Flare During Job	No
Flare During Job	0 units
Flare at End of Job	No
Flare at End of Job	0 units
Well Full Prior to Job	Yes
Well Fluid Density Into Well	9 lb/gal
Well Fluid Density Out of Well	9 lb/gal

### Job Details (cont.)

Metrics	Value
BHCT	81 °F
BHST	99 °F

### Water Analysis

Metrics	Value	Recommended
Water Source	Flat Tank	
Temperature	64 °F	50-80 °F
pH Level	7	5.5-8.5
Chlorides	0 mg/L	0-3000 mg/L
Total Alkalinity	180	0-1000
Total Hardness	300 mg/L	0-500 mg/L
Carbonates	0 mg/L	0-100 mg/L
Sulfates	200 mg/L	0-1500 mg/L
Potassium	0 mg/L	0-3000 mg/L
Iron	0 mg/L	0-300 mg/L

### Circulation

Lost Circulation Experienced
No

## Job Execution Information

Fluid	Product	Function	Density (lb/gal)	Yield (ft <sup>3</sup> /sk)	Water Rq. (gal/sk)	Water Rq. (gal/bbl)	Volume (sks)	Volume (bbl)	Designed Top (ft)
1	Water	Flush	8.34			42.00		20.00	0
2	Lead	Lead	12.30	2.31	13.15		158.00	64.94	0
3	Tail	Tail	12.80	2.03	11.15		188.00	68.07	500
4	Water	DisplacementFinal	8.34			42.00		85.00	0

## Job Fluid Details

Fluid	Type	Fluid	Product	Function	Conc.	Uom
2	Lead	Lead	ASTM TYPE IL	Cement	100.00	%
2	Lead	Lead	A-10	Accelerator	5.00	%BWOB
2	Lead	Lead	A-2	Accelerator	3.00	lb/sk
2	Lead	Lead	A-7P	Accelerator	2.00	lb/sk
2	Lead	Lead	FP-24	Defoamer	0.30	%BWOB
2	Lead	Lead	IntegraSeal POLI	LostCirculation	0.25	lb/sk
2	Lead	Lead	STATIC FREE	Other	0.01	lb/sk
3	Tail	Tail	ASTM TYPE IL	Cement	100.00	%
3	Tail	Tail	A-10	Accelerator	5.00	%BWOB
3	Tail	Tail	A-2	Accelerator	2.00	lb/sk
3	Tail	Tail	A-7P	Accelerator	2.00	lb/sk
3	Tail	Tail	FP-24	Defoamer	0.30	%BWOB
3	Tail	Tail	IntegraSeal POLI	LostCirculation	0.25	lb/sk
3	Tail	Tail	STATIC FREE	Other	0.01	lb/sk

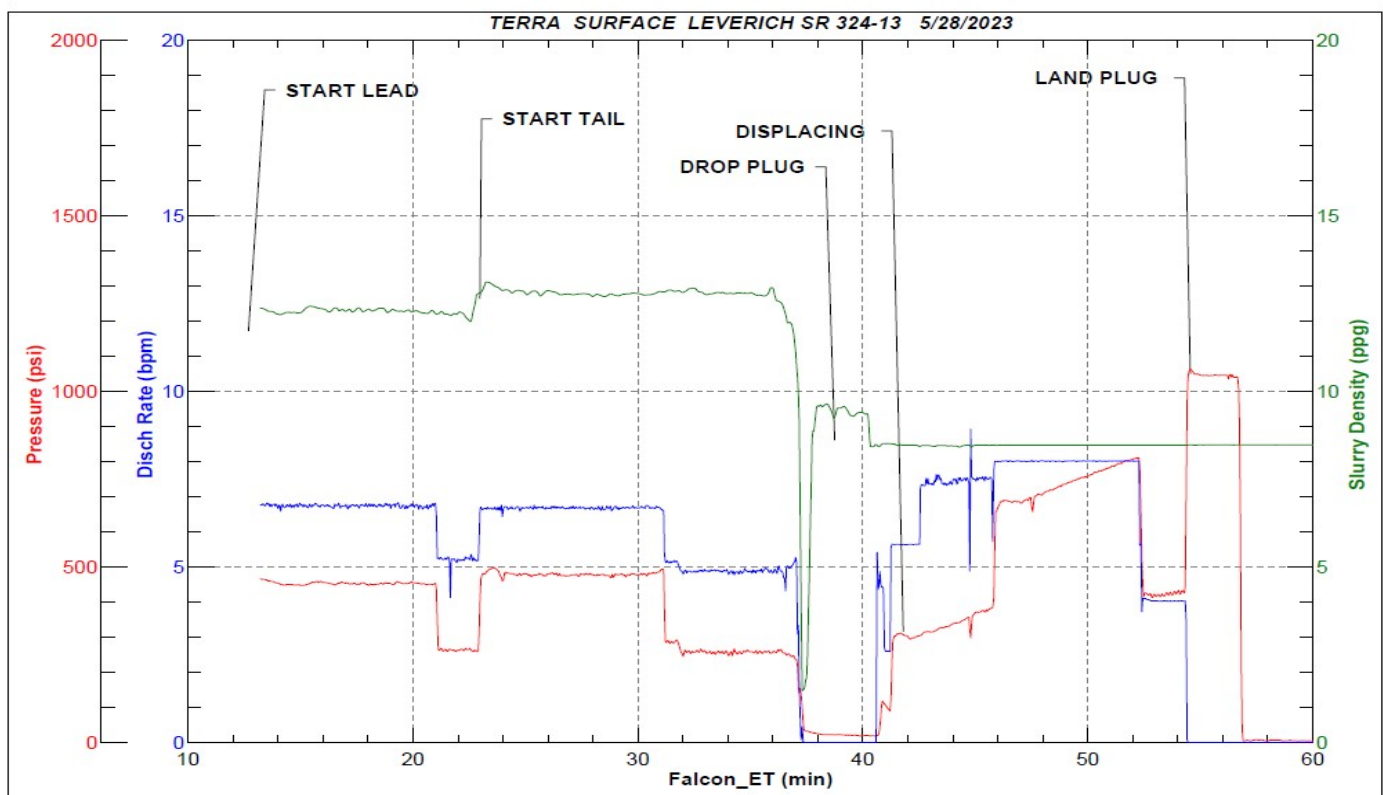
## Job Logs

Line	Event	Date (MM/DD/YY)	Time (HH:MM)	Density (lb/gal)	Pump Rate (bpm)	Pump Volume (bbls)	Pipe Pressure (psi)	Comment
1	Callout	5/27/2023	13:20					CREW CALLED OUT FOR ON LOCATION TIME OF 21:00 ON 5/27/23
2	Depart RCO	5/27/2023	18:40					CREW DEPARTS FOR RIG LOCATION
3	Arrive On Location	5/27/2023	19:31					CREW ARRIVES ON LOCATION
4	Rig Up Iron	5/27/2023	19:35					RIG UP IRON AND HOSES, DONE AND WAITING ON RIG TO RUN CASING 21:39
5	Safety Meeting	5/28/2023	00:13					JSA SAFETY MEETING WITH AC, RIG CREW, AND CUSTOMER REP
6	Fill Lines	5/28/2023	00:24	8.34	4	10	207	FILL LINES WITH 10 BBLS FRESH WATER
7	Pressure Test Lines	5/28/2023	00:26				3200	PRESSURE TEST PUMP AND LINES TO 3000 PSI
8	Other	5/28/2023	00:30	12.3				WEIGHTING UP CEMENT
9	Pump Lead Cement	5/28/2023	00:31		6.6	5	269	BEGIN PUMPING 12.3 PPG LEAD CEMENT, DENSITY VERIFIED BY MUD SCALE.
10	Pump Lead Cement	5/28/2023	00:44	12.3	5	65	233	PUMPED 65 BBLS LEAD CEMENT
11	Pump Tail Cement	5/28/2023	00:48	12.8	6.7	5	483	BEGIN PUMPING 12.8 PPG TAIL CEMENT, DENSITY VERIFIED BY MUD SCALE
12	Pump Tail Cement	5/28/2023	00:57	12.8	6.2	68	362	PUMPED 68 BBLS TAIL CEMENT
13	Clean Pumps and Lines	5/28/2023	01:00					WASH UP PUMP, WASHED UP ON PLUG
14	Drop Top Plug	5/28/2023	01:03	8.34	4	5	198	DROP PLUG, WITNESSED BY CUSTOMER REP. BEGIN DISPLACEMENT
15	Pump Displacement	5/28/2023	01:09	8.34	8	30	653	30 BBLS DISPLACEMENT PUMPED
16	Pump Displacement	5/28/2023	01:11	8.34	8	50	403	50 BBLS DISPLACEMENT PUMPED CEMENT TO SURFACE @ 42 BBLS PUMPED
17	Land Plug	5/28/2023	01:17	8.34	4	85	1075	PLUG LANDED. FCP - 515 PSI, BUMPED TO 1075 PSI
18	Check Floats	5/28/2023	01:19					CHECK FLOATS, FLOATS HELD, 0.5 BBLS BACK
19	Rig Down Iron	5/28/2023	01:25					RIG DOWN IRON AND HOSES
20	Depart Location	5/28/2023	02:20					DEPART LOCATION FOR RCO

## Pump Diagrams



JobMaster Program Version 5.01C1  
Job Number: 87166  
Customer: TERRA  
Well Name: LEVERICH SR 324-13



Job Start: Sunday, May 28, 2023