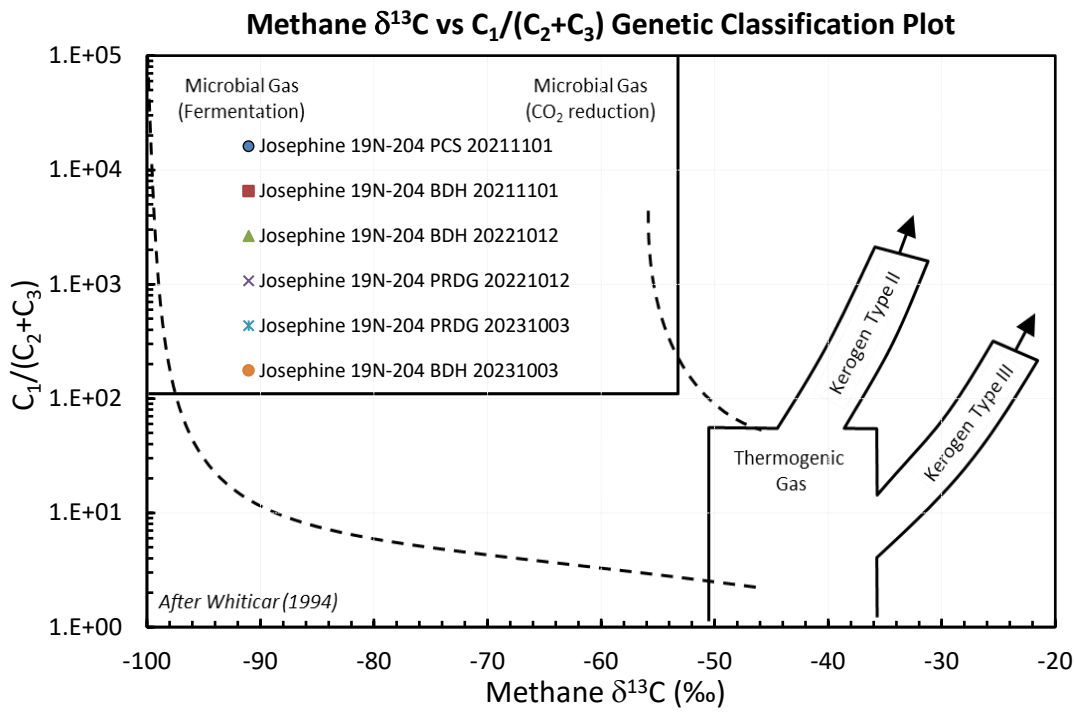
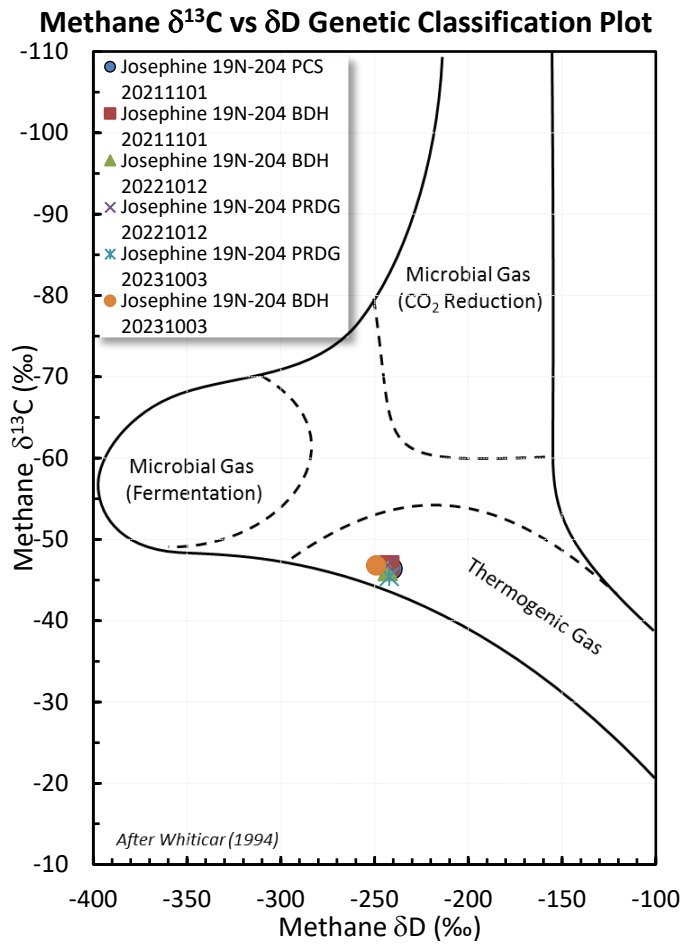
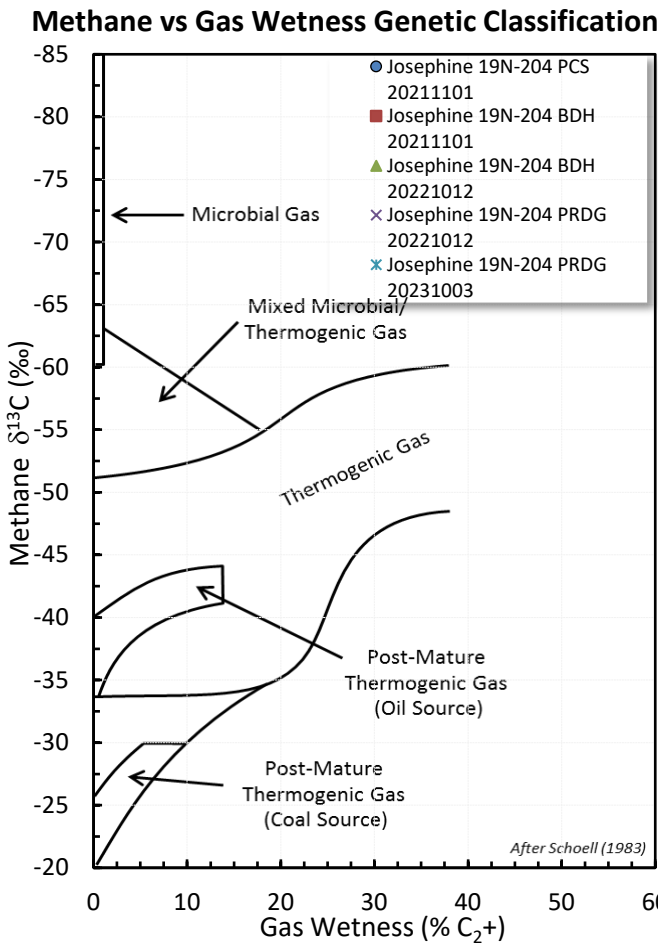
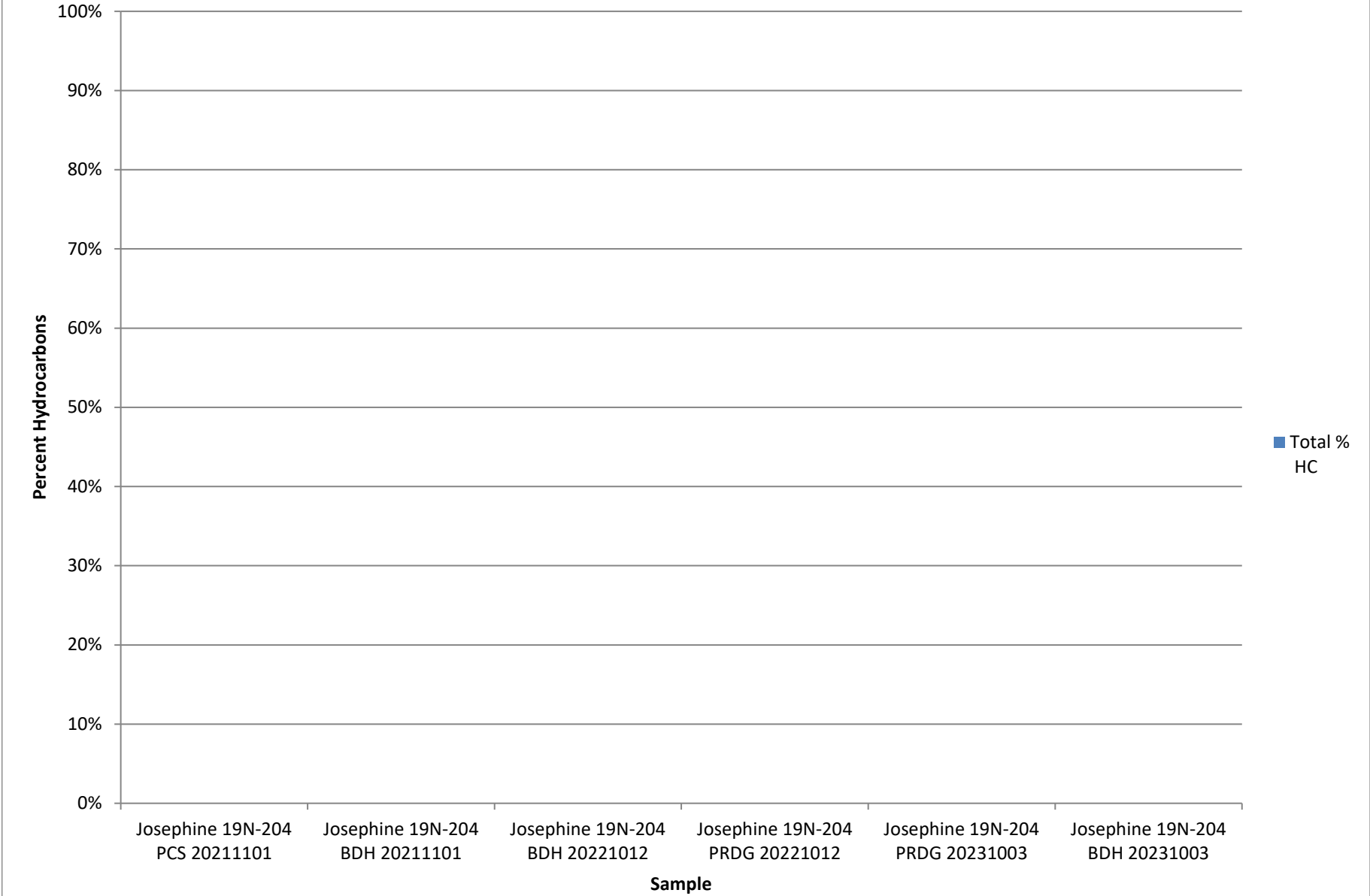


# Stable Isotope Interpretive Plots



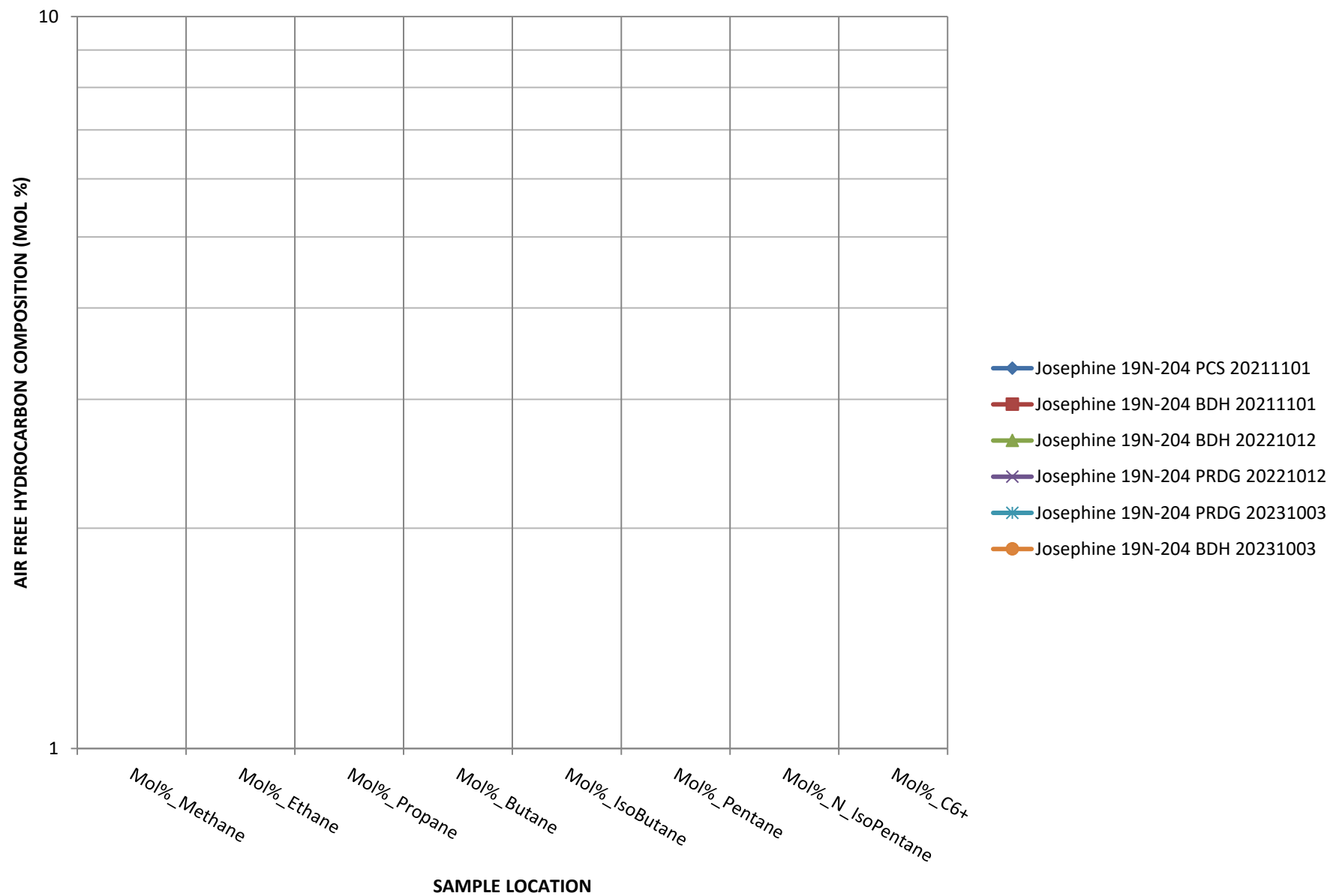
# Total Percent Hydrocarbons

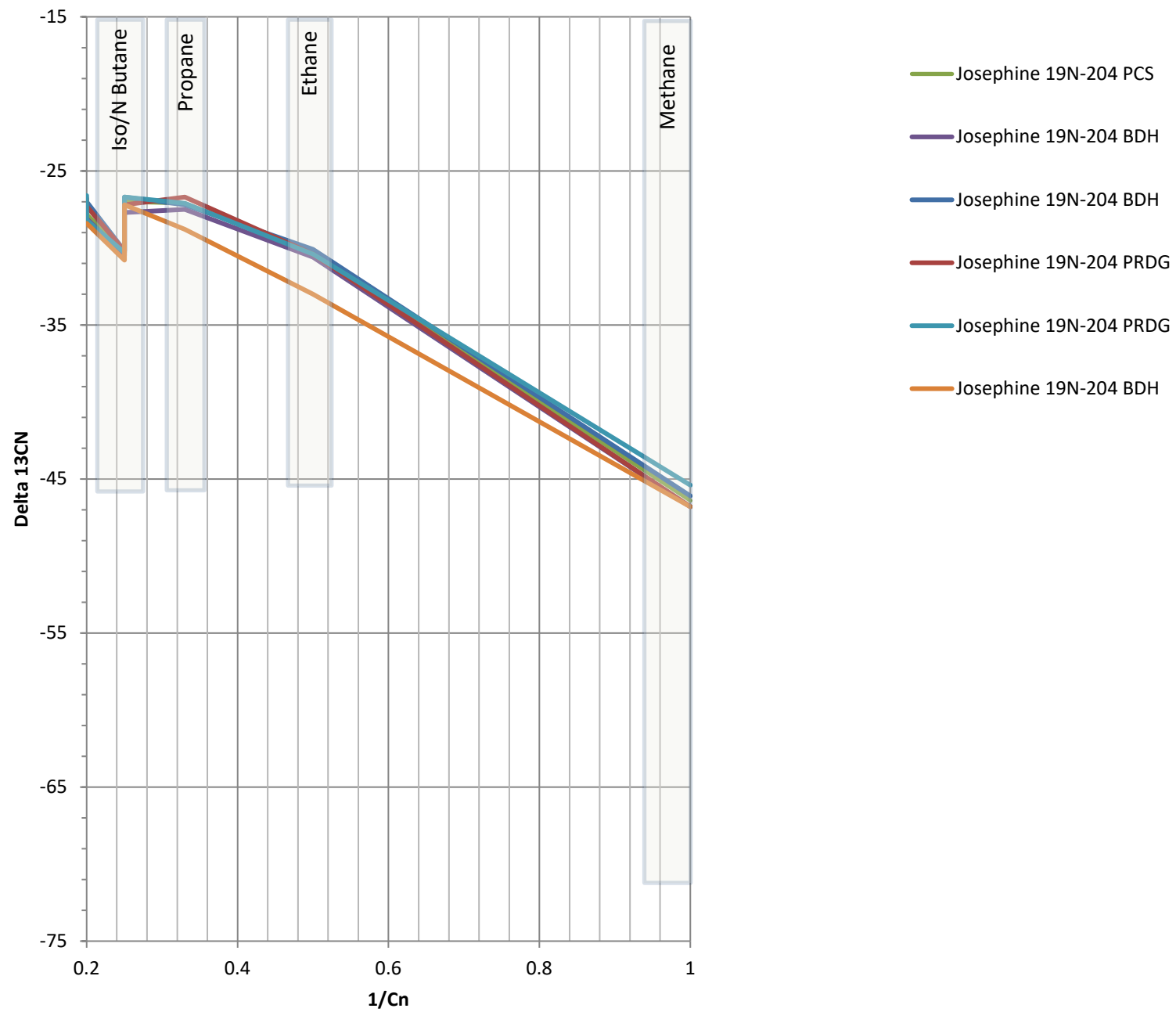


Parameter	Josephine 19N-204 PCS 20211101	Josephine 19N-204 BDH 20211101	Josephine 19N-204 BDH 20221012	Josephine 19N-204 PRDG 20211101	Josephine 19N-204 PRDG 20221012	Josephine 19N-204 PRDG 20231003
Mol%_Nitrogen	0.7	3.5	3.5	0.8	0.6	2.5
Mol%_Oxygen	0.01	0.01	0.01	0.01	0.01	0.01
Mol%_Argon	0.12	0.8	0.9	0.15	0.08	0.5
Mol%_O2+AR	2.8	0.6	0.15	2.5	2.2	0.01
Mol%_CarbonDiOxide	0.01	0.01	0.01	0.01	0.01	0.01
Mol%_Helium	0.01	0.015	0.01	0.01	0.01	0.12
Mol%_hydrogen	70	70	70	70	70	70
Mol%_Methane	12	12	12	12	12	11
Mol%_Ethane	6	6	6	6	6	7
Mol%_Propane	1.8	2.0	2.5	2.5	2.0	2.8
Mol%_Butane	0.8	0.9	1.0	0.9	0.9	1.2
Mol%_IsoButane	0.4	0.6	1.0	1.1	0.6	0.9
Mol%_N_Pentane	0.4	0.5	0.8	0.8	0.6	0.9
Mol%_C6+	0.2	0.9	0.8	0.8	0.5	0.9

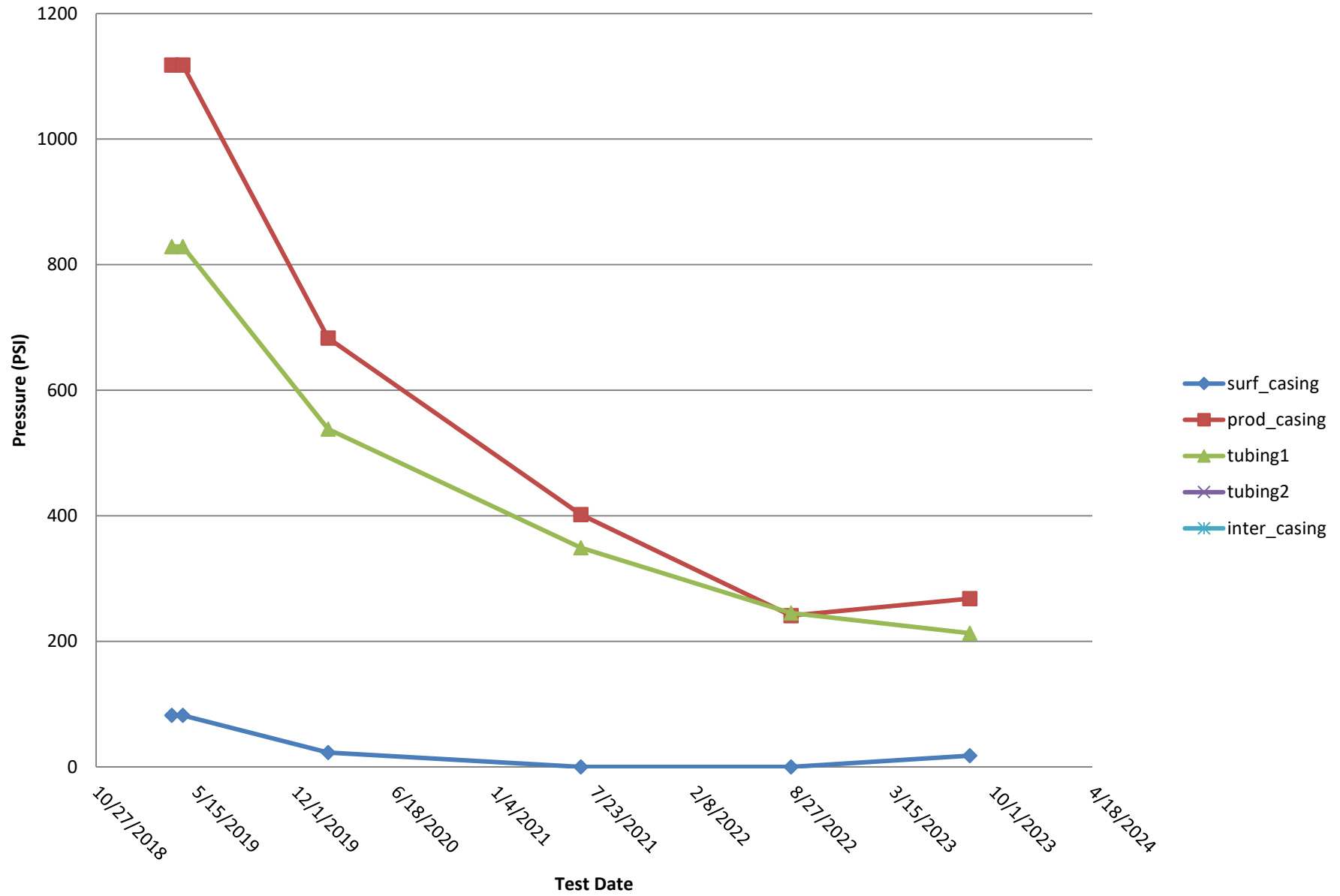
- Josephine 19N-204 PCS  
20211101
- Josephine 19N-204 BDH  
20211101
- Josephine 19N-204 BDH  
20221012
- Josephine 19N-204 PRDG  
20221012
- Josephine 19N-204 PRDG  
20231003

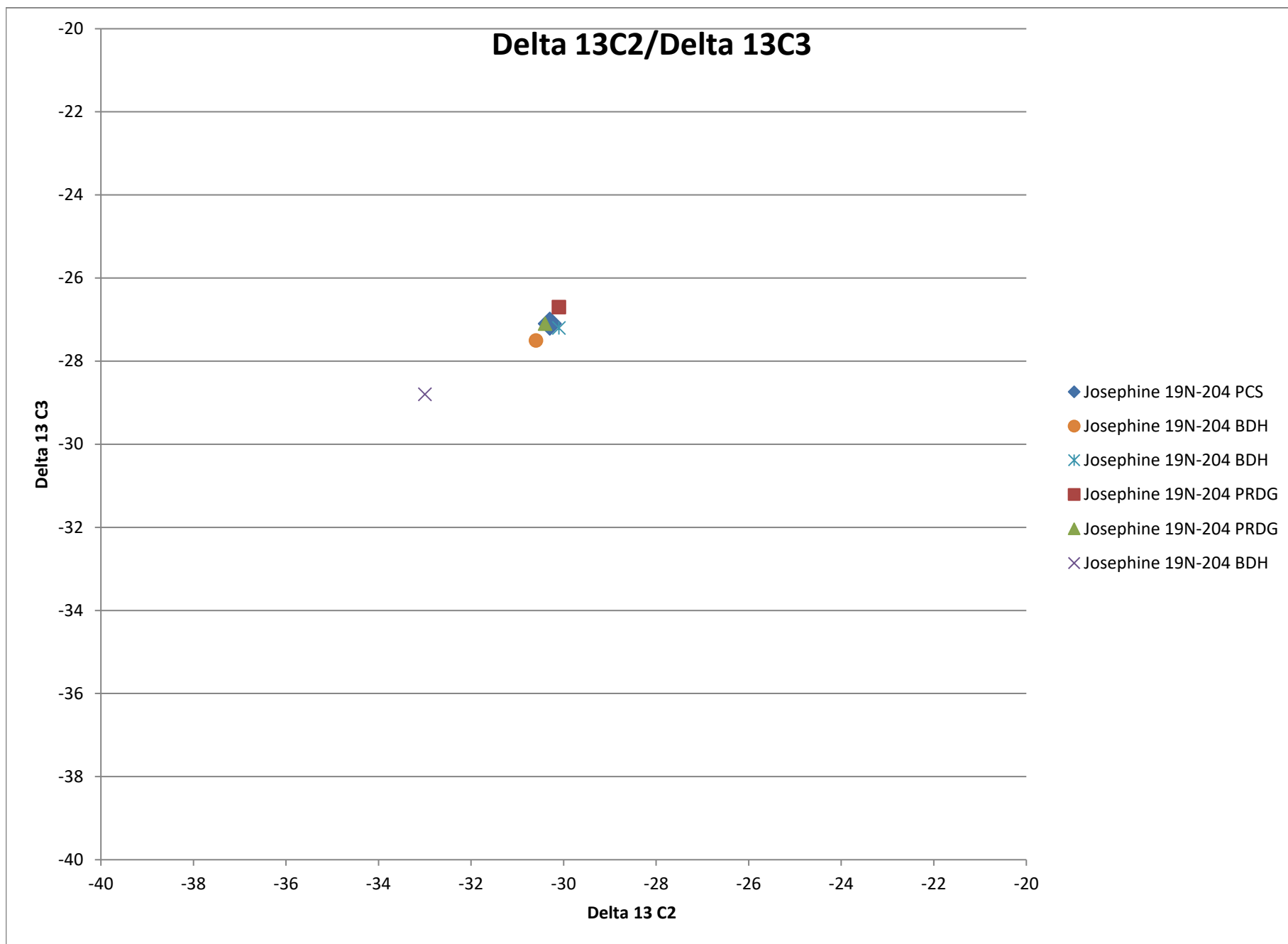
## HYDROCARBON COMPOSITION



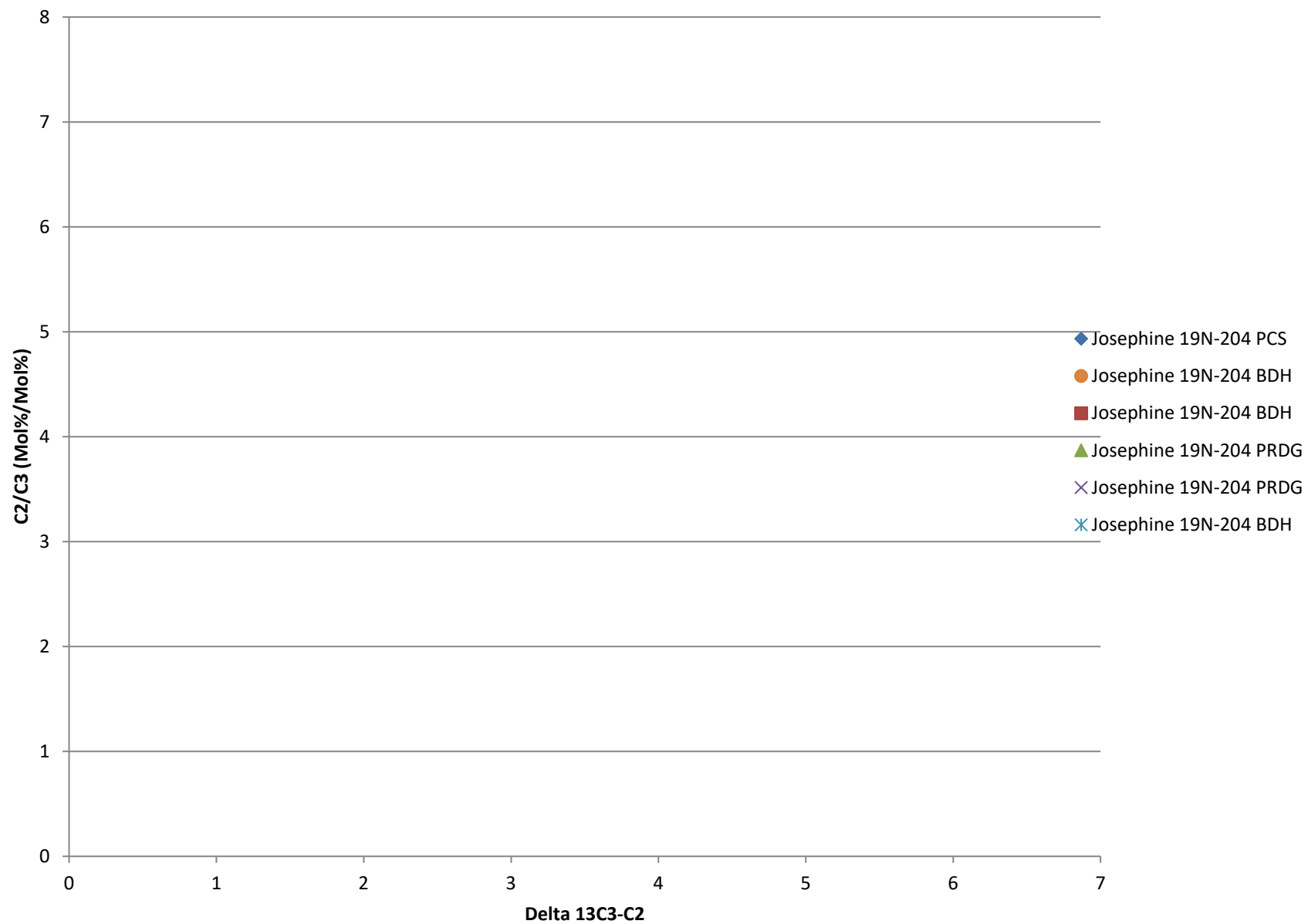


## Bradenhead Test Summary





## Delta13 C2/C3 vs. Delta 13C3-C2





## Delta 13 IC4/ Delta NC4

