

DECEMBER  
DEC 10 1965

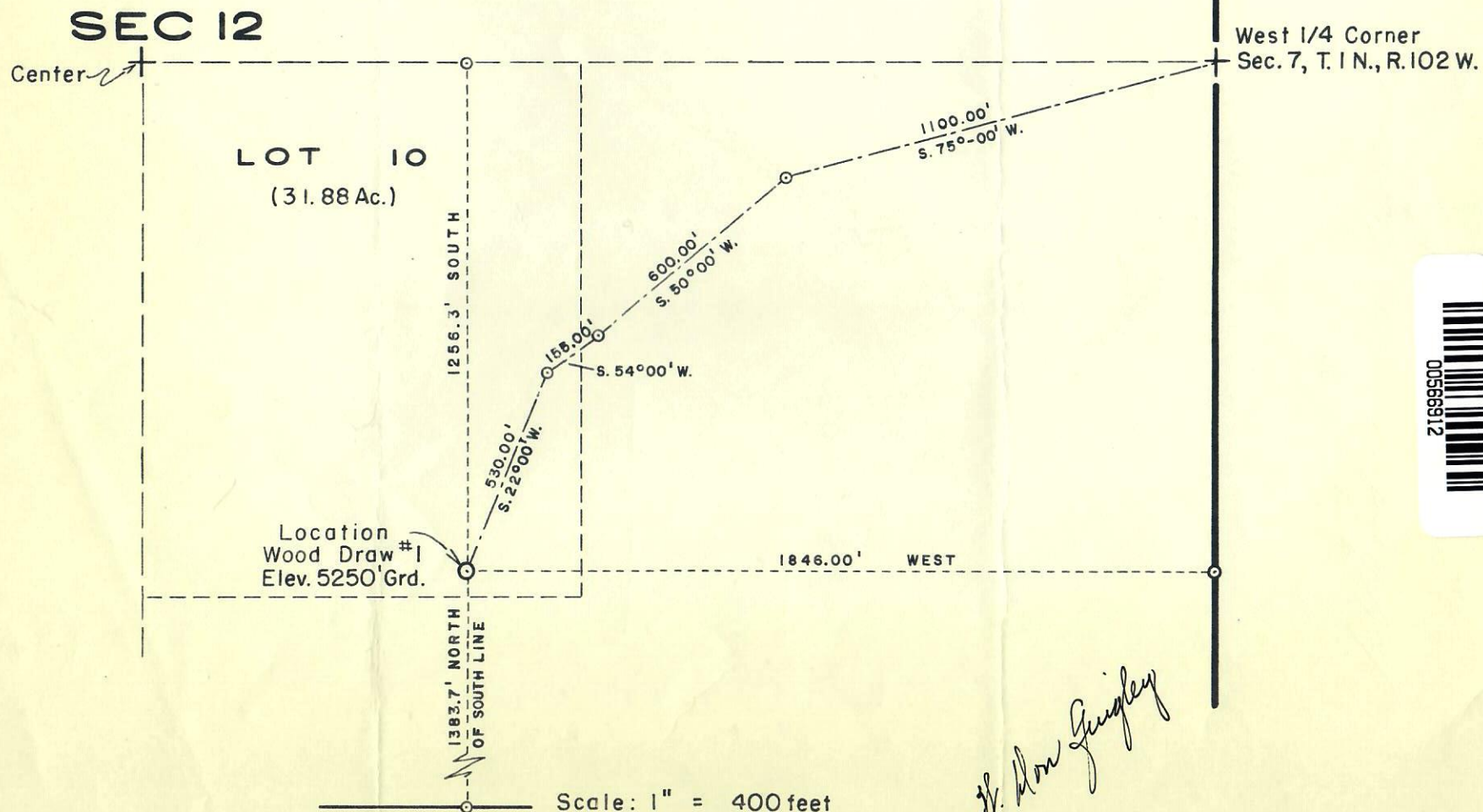
OIL & GAS  
CONSERVATION COMMISSION

# LOCATION PLAT for WOOD DRAW #1 WELL

SEC. 12, T. 1 N., R. 103 W., 6th. Prin. Base & Mer.

RIO BLANCO COUNTY, COLO.

ELEV. GRD. - 5250'



*W. Don Quigley*

Scale: 1" = 400 feet

Date: Dec. 7, 1965

By W. Don Quigley