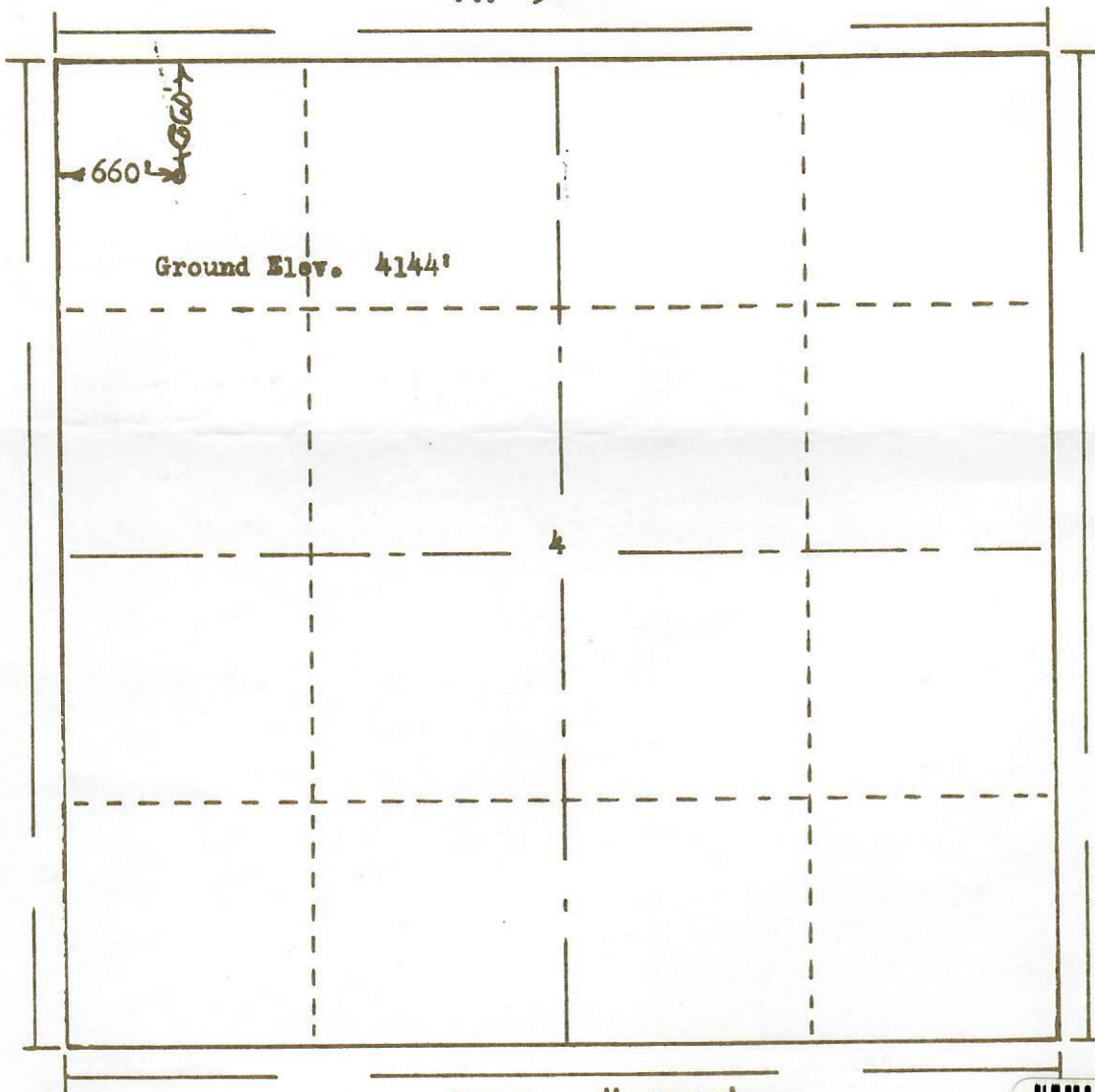




99999999

061-05132

R. 45W



T.
17
8

Scale ... 1" = 1000'



00939272

Powers Surveyors, Inc. of Denver, Colorado
has in accordance with a request from Mr. Johnson
for Plains Exploration Co. determined the
Location of No. 1 Fink
to be 660' PM & 660' PW Section 4 Township 17S
Range 45W of the 6th Principal Meridian
Kiowa County, Colorado



66 207

Permit No. _____

Date: 5-13-66

I hereby certify that this plat is an
accurate representation of a correct
survey showing the location of

OIL & GAS
CONSERVATION COMMISSION

B. G. H. Holman
Licensed Land Surveyor No. 2853
State of Colorado

