

Storm Water Management and Erosion control
Location Name: TEP Rocky Mountain LLC CLOUGH RWF 33-15 Pad
Location # 335064



**Location Overview: Location is within High Priority/Density
Habitat areas & in close proximity to Bald Eagle Roost Site.**
Section/Township/Range: 15 6S94W

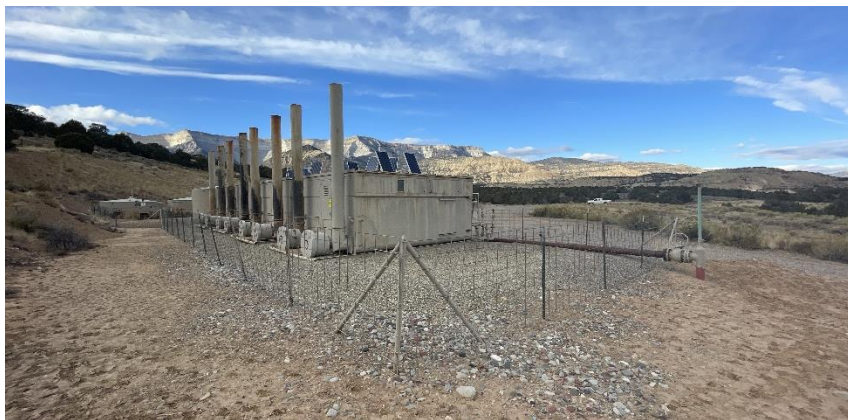
Storm water Management and Erosion control
Location Name: TEP Rocky Mountain LLC CLOUGH RWF 33-15 Pad
Location # 335064



North West corner of location.



North East corner of location.



South West corner of location.



South East corner of location.