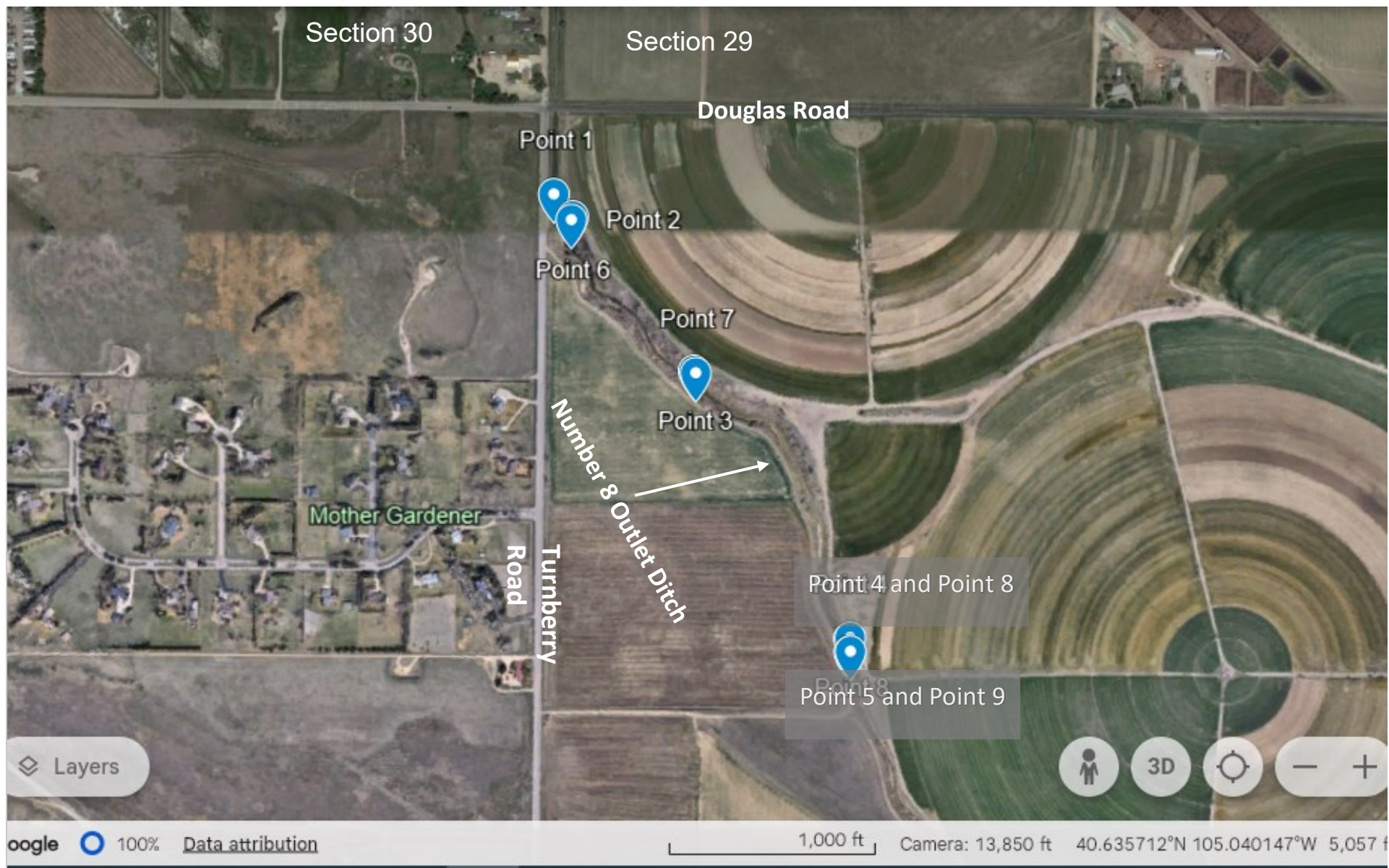


# Map of Water Sample Locations – Number 8 Ditch Outlet – NW Sec 29 T8N R68 W – Larimer County



	<b>Sample Designation</b>	<b>Lat</b>	<b>Long</b>	<b>Date</b>	<b>Time</b>
Point 1	Background	40.637728	-105.03847	10/31/2023	17:30
Point 2	Inlet	40.637455	-105.038138	10/31/2023	17:15
Point 3	Mid-Stream	40.635373	-105.036028	10/31/2023	17:00
Point 4	Above Dam	40.631808	-105.033325	10/31/2023	16:45
Point 5	Below Dam	40.631656	-105.033177	10/31/2023	16:25
Point 6	30-7-5 (Near Inlet)	40.637396	-105.0381794	11/3/2023	13:00
Point 7	30-7-6 (Near Mid-Stream)	40.6353729	-105.0360103	11/3/2023	13:30
Point 8	30-7-7 (Above Dam)	40.631856	-105.03331	11/3/2023	13:45
Point 9	30-7-8 (Below Dam)	40.631670	-105.033290	11/3/2023	14:40



## Water Sample Locations Near Inlet and Mid-Stream At Number 8 Outlet Ditch NWNW Sec 29 T8N R 68W Larimer County



## Water Sample Locations Near Dam At Number 8 Outlet Ditch SESW Sec 29 T8N R 68W Larimer County

